

autostone usa

Jaguar Land Rover

Modern Luxury ARCH Tile Material Program Guide

2026.4 Edition

AutoStoneUSA.com/JLR/
jlr@autostoneusa.com

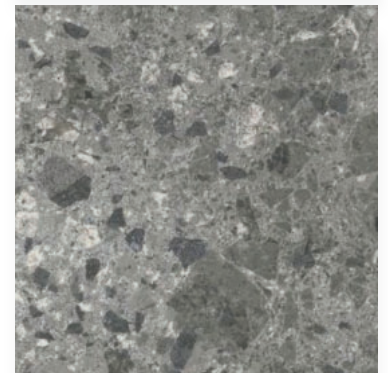


MADE IN USA



AutoStoneUSA.com

© 2026 AutoStone Floor Systems, All Rights Reserved.





Q2KD

QUARRY TO KILN DOMESTIC PRODUCTION

Manufactured with Clean.Tech, advanced porcelain technology.

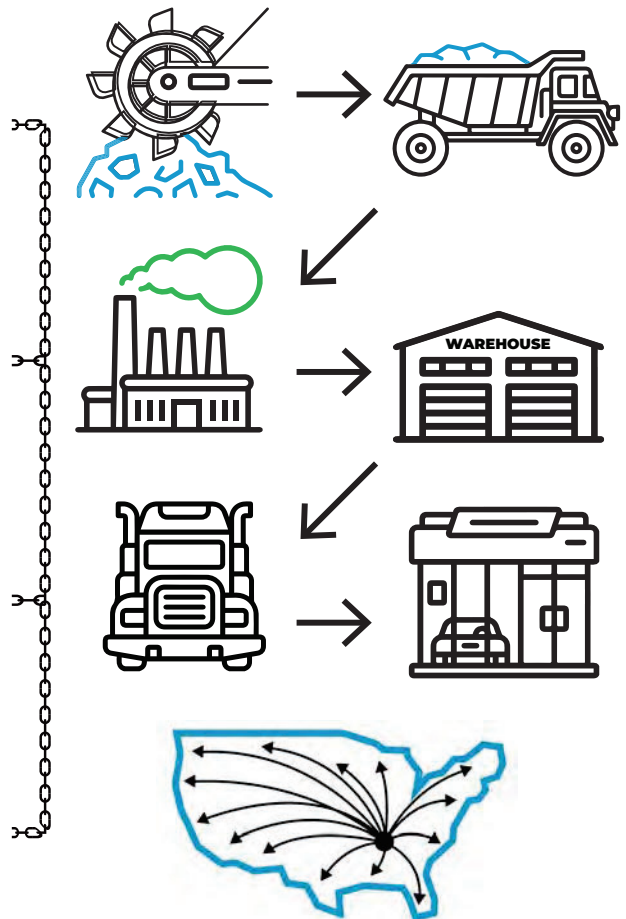


BrightFinish permanently coats and seals your tile for better cleaning results



Dealerships that use Clean.Tech report cleaner facilities and overall safer retailing environments.

- 1** **LOCALLY SOURCED & LOCALLY QUARRIED**
 - ✓ Elimination of trans-ocean shipping
 - ✓ US jobs, shorter supply chain
- 2** **DOMESTICALLY PRODUCED & LOCALLY WAREHOUSED**
 - ✓ Less shipping
 - ✓ Reduced carbon footprint
- 3** **CONSOLIDATED SHIPPING DIRECT TO YOUR DEALERSHIP**
 - ✓ Eliminates distribution shipping
 - ✓ Reduces use of fossil fuel
- 4** **DOMESTICALLY PRODUCED SMARTER & EFFICIENT DISTRIBUTION**
 - ✓ Better for the environment
 - ✓ Saves you money





Jaguar Land Rover ARCH Program



MODERN LUXURY ARCH TILE SELECTION



JLR Code: FL-01

Environment of Use: Interior
 Series Name: Industry.CleanTech
 Colour Name: White Concrete
 Finish: BrightFinish
 Surface: Matte | Natural



Environment of Use Rating: ANSI A326.3 4.1.2 (IW) Interior Wet
 DCOF Rating: > .42 DCOF Wet
 Size: 24" x 24" - and - 48" x 48" (nominal sizing)
 Thickness: 9 mm

A326.3 2021	Classification	Reference Category	Criteria	Comments	AutoStoneUSA
4.1.1	Interior, Dry	ID	> 42 dry DCOF* (per Section 10.1)	n/a for automotive retail	YES
4.1.2	Interior, Wet	IW	> 42 wet DCOF* (per Section 9.1)	most retail showroom areas	YES
4.1.3	Interior, Wet Plus	IW+	> 50 wet DCOF* (manufacturer declared)	a case can be made for this lower classification	YES
4.1.4	Exterior Wet	EW	> 55 wet DCOF* (manufacturer declared)	service drives & spaces w/o high-speed doors & HVAC controls	YES
4.1.5	Oils/Greases	O/G	> 55 wet DCOF* (manufacturer declared)	this standard that impacts service drive & workshop environments	YES

V-Rating:



Designed and Manufactured to be Maintained in a "like new" appearance for the life of the facility.

The FL-01 Showroom Tile is manufactured with Clean.Tech and includes BrightFinish. This is a permanent sealant applied during the kiln firing process. BrightFinish seals the surface micropores to keep rubber transfer, stains, and contaminants from permanently embedding into the surface. By permanently sealing the micropores you keep the tile from absorbing dirt, grease, and grime. AutoStoneUSA BrightFinish helps your floor be maintained in a "like new" appearance for the life of your dealership.



Environment of Use Standards

ANSI A326.3 4.1.2 IW Interior, Wet Standard

AutoStoneUSA FL-01

Meets STF (slip, trip, and fall) DCOF Rating

AutoStoneUSA Rating > .42 DCOF Wet

Classification	Reference Category	Criteria (DCOF Requirements)	Possible Areas of Use / Description	Comments / Informative Notes
Interior, Wet	IW	≥ 0.42 wet DCOF* (per Section 9.1) or Manufacturer-Declared	Level interior spaces expected to be walked upon when wet with water (intermittent exposure to water, liquids, or contaminants; kept dry otherwise). Examples: Entry foyers, public restrooms (without showers), grocery stores, front-of-house restaurants (fine/casual dining), home interiors including bathrooms/kitchens.	Products must be suitable for occasional wet conditions but not heavy standing water or oils/grease. Frequent maintenance may be needed to keep clean. DCOF ≥ 0.42 is the generally accepted minimum for this category when measured per the standard. Manufacturer declaration is allowed (optionally based on other factors like texture or grout). Not intended for areas with frequent contaminants beyond water.



Jaguar Land Rover ARCH Program



MODERN LUXURY ARCH TILE SELECTION

MADE IN THE



JLR Code: FL-11
Environment of Use: Exterior
Series Name: Industry.CleanTech
Color Name: White Concrete
Finish: BrightFinish
Surface: Super.Grip.BrightFinish



Environment of Use Rating: ANSI A326.3 4.1.4 (EW) Exterior Wet
 ANSI A326.3 4.1.5 (O/G) Oils Grease

DCOF Rating: > .55 DCOF Wet

Size: 12" x 24" (nominal sizing)

Additional Size Options: 24" x 24" - and - 48" x 48" (nominal sizing)

Thickness: 9 mm (installed on a concrete substrate)

A326.3 2021	Classification	Reference Category	Criteria	Comments	AutoStoneUSA
4.1.1	Interior, Dry	ID	> 42 dry DCOF* (per Section 10.1)	n/a for automotive retail	YES
4.1.2	Interior, Wet	IW	> 42 wet DCOF* (per Section 9.1)	most retail showroom areas	YES
4.1.3	Interior, Wet Plus	IW+	> 50 wet DCOF* (manufacturer declared)	a case can be made for this lower classification	YES
4.1.4	Exterior Wet	EW	> 55 wet DCOF* (manufacturer declared)	service drives & spaces w/o high-speed doors & HVAC controls	YES
4.1.5	Oils/Greases	O/G	> 55 wet DCOF* (manufacturer declared)	this standard that impacts service drive & workshop environments	YES

V-Rating:



Designed and Manufactured to be Maintained in a "like new" appearance for the life of the facility.

The FL-11 Exterior Tile is manufactured with Clean.Tech and includes BrightFinish. This is a permanent sealant applied during the kiln firing process. BrightFinish seals the surface micropores to keep rubber transfer, stains, and contaminants from permanently embedding into the surface. By permanently sealing the micropores you keep this exterior tile from absorbing dirt, grease and grime. This is an exterior use tile and exposed to the elements (weather, heat, cold, and constant contaminants).

AutoStoneUSA BrightFinish helps your exterior vehicle display area be maintained in a "like new" appearance for the life of your dealership.

Environment of Use Standards

ANSI A326.3 Standards

AutoStoneUSA FL-11 Meets Your Highest

STF (slip, trip, and fall) Requirements

DCOF Rating > .55 DCOF Wet

4.1.4 Exterior, Wet (EW) Environment

4.1.5 Oils, Grease (O/G) Environment

4.1.4 Exterior, Wet: See Section 3.4. *Product shall be manufacturer-declared for this category* based on manufacturing parameters, internal quality control criteria, and manufacturer experience with similar surfaces. Attributes to consider include, but are not limited to, product size, texture, structure, and additionally in wet applications, drainage. Products meeting Exterior, Wet criteria may require frequent maintenance to keep clean.

INFORMATIVE NOTE:
Possible Areas of Use: Subject to determination by specifier and the criteria in this standard, may include, but are not limited to, level outdoor living spaces including pool decks, walkways, patios, and sidewalks, where such floors may be walked upon when wet (excluding ice or snow) if level, clean, maintained, and free of standing water or other contaminants.

INFORMATIVE NOTE: In the absence of superseding manufacturer-declared product use classification, excepting where measured DCOF is lower due to the impact of structure on the DCOF measurement, it is generally accepted that hard surface flooring in this category should have at least a minimum wet DCOF value of 0.55, with factors other than wet DCOF also taken into consideration. Such factors include, but are not limited to, expected contaminants, drainage, surface structure, effect of structure on the DCOF measurement, number of grout joints (see Informative Note in Section 9.1.7), traction-enhancing features, and intended use, in addition to the other criteria in this standard. As the suitability of the installed hard surface flooring depends significantly on such factors, a single normative DCOF limit value is not provided.

4.1.5 Oils/Greases: See Section 3.4. *Product shall be manufacturer-declared for this category* where oil, grease, and/or fats may be present, based on manufacturing parameters, internal quality control criteria, and manufacturer experience with similar surfaces. Attributes to consider include, but are not limited to, product size, texture, structure, and drainage. Products meeting Oils/Greases criteria may require frequent maintenance to keep clean.

INFORMATIVE NOTE:
Possible Areas of Use: Subject to determination by specifier and the criteria in this standard, may include, but are not limited to, level areas regularly exposed to automotive fluids, "back of the house" fast food or family style restaurants, food preparation areas with grills or deep-fry equipment, and any area where oil, grease, and/or fats may be present so long as such floors are level, regularly cleaned, maintained, and free of standing water and contaminant build-up.

INFORMATIVE NOTE: In the absence of superseding manufacturer-declared product use classification, excepting where measured DCOF is lower due to the impact of structure on the DCOF measurement, it is generally accepted that hard surface flooring in this category should have at least a minimum wet DCOF value of 0.55, with factors other than wet DCOF also taken into consideration. Such factors include, but are not limited to, expected contaminants, drainage, surface structure, effect of structure on the DCOF measurement, number of grout joints (see Informative Note in Section 9.1.7), traction-enhancing features, and intended use, in addition to the other criteria in this standard. As the suitability of the installed hard surface flooring depends significantly on such factors, a single normative DCOF limit value is not provided.



Jaguar Land Rover ARCH Program



MODERN LUXURY ARCH TILE SELECTION



JLR Code: WA-01

Environment of Use: Interior - Wall

Series Name: Industry

Colour Name: White Concrete

Finish: BrightFinish

Surface: Matte | Natural



Environment of Use Rating: ANSI A326.3 4.1.2 (IW) Interior Wet

DCOF Rating: > .42 DCOF Wet

Size: 12" x 24" - and - 24" x 48" (nominal sizing)

Thickness: 9 mm

A326.3 2021	Classification	Reference Category	Criteria	Comments	AutoStoneUSA
4.1.1	Interior, Dry	ID	> 42 dry DCOF* (per Section 10.1)	n/a for automotive retail	YES
4.1.2	Interior, Wet	IW	> 42 wet DCOF* (per Section 9.1)	most retail showroom areas	YES
4.1.3	Interior, Wet Plus	IW+	> 50 wet DCOF* (manufacturer declared)	a case can be made for this lower classification	YES
4.1.4	Exterior Wet	EW	> 55 wet DCOF* (manufacturer declared)	service drives & spaces w/o high-speed doors & HVAC controls	YES
4.1.5	Oils/Greases	O/G	> 55 wet DCOF* (manufacturer declared)	this standard that impacts service drive & workshop environments	YES

V-Rating:



Environment of Use Standards

ANSI A326.3 4.1.2 IW Interior, Wet Standard

AutoStoneUSA WA-01

Meets STF (slip, trip, and fall) DCOF Rating

AutoStoneUSA Rating > .42 DCOF Wet

Classification	Reference Category	Criteria (DCOF Requirements)	Possible Areas of Use / Description	Comments / Informative Notes
Interior, Wet	IW	≥ 0.42 wet DCOF* (per Section 9.1) or Manufacturer-Declared	Level interior spaces expected to be walked upon when wet with water (intermittent exposure to water, liquids, or contaminants; kept dry otherwise). Examples: Entry foyers, public restrooms (without showers), grocery stores, front-of-house restaurants (fine/casual dining), home interiors including bathrooms/kitchens.	Products must be suitable for occasional wet conditions but not heavy standing water or oils/grease. Frequent maintenance may be needed to keep clean. DCOF ≥ 0.42 is the generally accepted minimum for this category when measured per the standard. Manufacturer declaration is allowed (optionally based on other factors like texture or grout). Not intended for areas with frequent contaminants beyond water.



Jaguar Land Rover ARCH Program



MODERN LUXURY ARCH TILE SELECTION

MADE IN THE



JLR Code: FL-07

Environment of Use: Interior

Series Name: WoodPlank

Color Name: Sycamore Haywood

Finish: Matte | Natural

Environment of Use Rating: ANSI A326.3 4.1.2 (IW) Interior Wet

DCOF Rating: > .42 DCOF Wet

Size: 08" x 48" (nominal sizing)

Thickness: 9 mm



A326.3 2021	Classification	Reference Category	Criteria	Comments	AutoStoneUSA
4.1.1	Interior, Dry	ID	> 42 dry DCOF* (per Section 10.1)	n/a for automotive retail	YES
4.1.2	Interior, Wet	IW	> 42 wet DCOF* (per Section 9.1)	most retail showroom areas	YES
4.1.3	Interior, Wet Plus	IW+	> 50 wet DCOF* (manufacturer declared)	a case can be made for this lower classification	YES
4.1.4	Exterior Wet	EW	> 55 wet DCOF* (manufacturer declared)	service drives & spaces w/o high-speed doors & HVAC controls	YES
4.1.5	Oils/Greases	O/G	> 55 wet DCOF* (manufacturer declared)	this standard that impacts service drive & workshop environments	YES

V-Rating:



Environment of Use Standards

ANSI A326.3 4.1.2 IW Interior, Wet Standard

AutoStoneUSA FL-07

Meets STF (slip, trip, and fall) DCOF Rating

AutoStoneUSA Rating > .42 DCOF Wet

Classification	Reference Category	Criteria (DCOF Requirements)	Possible Areas of Use / Description	Comments / Informative Notes
Interior, Wet	IW	≥ 0.42 wet DCOF* (per Section 9.1) or Manufacturer-Declared	Level interior spaces expected to be walked upon when wet with water (intermittent exposure to water, liquids, or contaminants; kept dry otherwise). Examples: Entry foyers, public restrooms (without showers), grocery stores, front-of-house restaurants (fine/casual dining), home interiors including bathrooms/kitchens.	Products must be suitable for occasional wet conditions but not heavy standing water or oils/grease. Frequent maintenance may be needed to keep clean. DCOF ≥ 0.42 is the generally accepted minimum for this category when measured per the standard. Manufacturer declaration is allowed (optionally based on other factors like texture or grout). Not intended for areas with frequent contaminants beyond water.

autostone usa

Jaguar Land Rover ARCH Program



MODERN LUXURY ARCH TILE SELECTION

MADE IN THE

JLR Code: **FL-09**



Environment of Use: **Interior - or - Exterior**

Series Name: **Clean.Tech.Fragmenta**

Color Name: **Grey Grecco**

Surface: **Super.Grip.BrightFinish**



Environment of Use Rating: **ANSI A326.3 4.1.4 (EW) Exterior Wet**
ANSI A326.3 4.1.5 (O/G) Oils Grease

DCOF Rating: **> .55 DCOF Wet**

Size: **12" x 24"** (nominal sizing)

Additional Size Options: **24" x 24" - and - 24" x 48"** (nominal sizing)

Thickness: **9 mm**

LRV Rating: **52 average LRV Value (Higher reflection)**

Light Reflection Rating **ASTM C609**

A326.3 2021	Classification	Reference Category	Criteria	Comments	AutoStoneUSA
4.1.1	Interior, Dry	ID	> 42 dry DCOF* (per Section 10.1)	n/a for automotive retail	YES
4.1.2	Interior, Wet	IW	> 42 wet DCOF* (per Section 9.1)	most retail showroom areas	YES
4.1.3	Interior, Wet Plus	IW+	> 50 wet DCOF* (manufacturer declared)	a case can be made for this lower classification	YES
4.1.4	Exterior Wet	EW	> 55 wet DCOF* (manufacturer declared)	service drives & spaces w/o high-speed doors & HVAC controls	YES
4.1.5	Oils/Greases	O/G	> 55 wet DCOF* (manufacturer declared)	this standard that impacts service drive & workshop environments	YES

V-Rating:



Designed and Manufactured to be Maintained in a "like new" appearance for the life of the facility.

This is manufactured and designed for use in the service drive environment from AutoStoneUSA using our Clean.TechUSA platform with BrightFinish. BrightFinish is a permanent sealant applied during the kiln firing process which seals the surface micropores and coats the Super.Grip textured surface. BrightFinish coats the Super.Grip Texture surface to keep rubber transfer from permanently embedding into the tile surface texture. BrightFinish aids JLR dealers with your standard cleaning practices because BrightFinish retards permanent surface staining.

AutoStoneUSA BrightFinish helps you maintain your floors in a "like new" appearance for the life of your dealership. This is very important in your service drive and reduces STF events.

Environment of Use Standards

ANSI A326.3 Standards

AutoStoneUSA FL-09 Meets Your Highest

STF (slip, trip, and fall) Requirements

DCOF Rating > .55 DCOF Wet

4.1.4 Exterior, Wet (EW) Environment

4.1.4 Exterior, Wet: See Section 3.4. *Product shall be manufacturer-declared for this category* based on manufacturing parameters, internal quality control criteria, and manufacturer experience with similar surfaces. Attributes to consider include, but are not limited to, product size, texture, structure, and additionally in wet applications, drainage. Products meeting Exterior, Wet criteria may require frequent maintenance to keep clean.

INFORMATIVE NOTE:

Possible Areas of Use: Subject to determination by specifier and the criteria in this standard, may include, but are not limited to, level outdoor living spaces including pool decks, walkways, patios, and sidewalks, where such floors may be walked upon when wet (excluding ice or snow) if level, clean, maintained, and free of standing water or other contaminants.

INFORMATIVE NOTE: In the absence of superseding manufacturer-declared product use classification, excepting where measured DCOF is lower due to the impact of structure on the DCOF measurement, it is generally accepted that hard surface flooring in this category should have at least a minimum wet DCOF value of 0.55, with factors other than wet DCOF also taken into consideration. Such factors include, but are not limited to, expected contaminants, drainage, surface structure, effect of structure on the DCOF measurement, number of grout joints (see Informative Note in Section 9.1.2), traction-enhancing features, and intended use, in addition to the other criteria in this standard. As the suitability of the installed hard surface flooring depends significantly on such factors, a single normative DCOF limit value is not provided.

4.1.5 Oils, Grease (O/G) Environment

4.1.5 Oils/Greases: See Section 3.4. *Product shall be manufacturer-declared for this category* where oil, grease, and/or fats may be present, based on manufacturing parameters, internal quality control criteria, and manufacturer experience with similar surfaces. Attributes to consider include, but are not limited to, product size, texture, structure, and drainage. Products meeting Oils/Greases criteria may require frequent maintenance to keep clean.

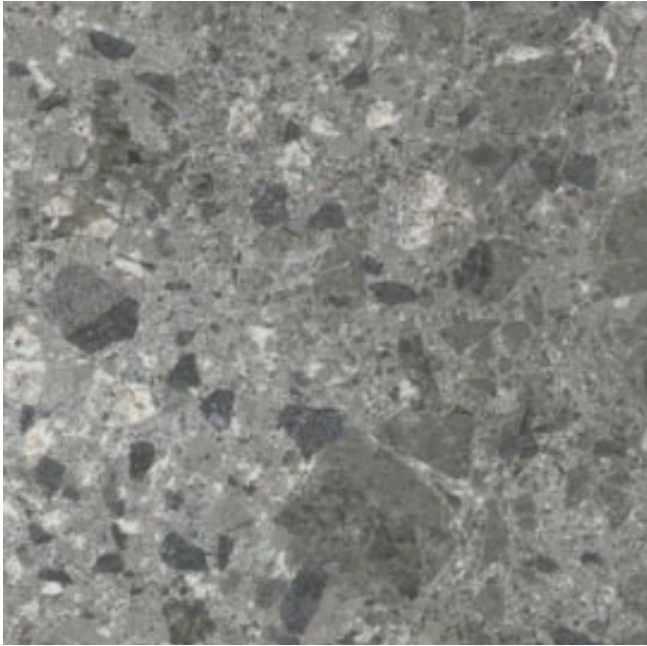
INFORMATIVE NOTE:

Possible Areas of Use: Subject to determination by specifier and the criteria in this standard, may include, but are not limited to, level areas regularly exposed to automotive fluids, "back of the house" fast food or family-style restaurants, food preparation areas with grills or deep-fry equipment, and any area where oil, grease, and/or fats may be present so long as such floors are level, regularly cleaned, maintained, and free of standing water and contaminant build-up.

INFORMATIVE NOTE: In the absence of superseding manufacturer-declared product use classification, excepting where measured DCOF is lower due to the impact of structure on the DCOF measurement, it is generally accepted that hard surface flooring in this category should have at least a minimum wet DCOF value of 0.55, with factors other than wet DCOF also taken into consideration. Such factors include, but are not limited to, expected contaminants, drainage, surface structure, effect of structure on the DCOF measurement, number of grout joints (see Informative Note in Section 9.1.2), traction-enhancing features, and intended use, in addition to the other criteria in this standard. As the suitability of the installed hard surface flooring depends significantly on such factors, a single normative DCOF limit value is not provided.

autostone usa

Jaguar Land Rover ARCH Program



MODERN LUXURY ARCH TILE SELECTION

MADE IN THE

JLR Code: FL-10



Environment of Use: Interior - or - Exterior

Series Name: Clean.Tech.Fragmenta

Color Name: Deep Grey Milan

Surface: Super.Grip.BrightFinish



Environment of Use Rating: ANSI A326.3 4.1.4 (EW) Exterior Wet

ANSI A326.3 4.1.5 (O/G) Oils Grease

DCOF Rating: > .55 DCOF Wet

Size: 12" x 24" (nominal sizing)

Additional Size Options: 24" x 24" - and - 24" x 48" (nominal sizing)

Thickness: 9 mm

LRV Rating: 30 average LRV Value (lower reflection)

Light Reflection Rating ASTM C609

A326.3 2021	Classification	Reference Category	Criteria	Comments	AutoStoneUSA
4.1.1	Interior, Dry	ID	> 42 dry DCOF* (per Section 10.1)	n/a for automotive retail	YES
4.1.2	Interior, Wet	IW	> 42 wet DCOF* (per Section 9.1)	most retail showroom areas	YES
4.1.3	Interior, Wet Plus	IW+	> 50 wet DCOF* (manufacturer declared)	a case can be made for this lower classification	YES
4.1.4	Exterior Wet	EW	> 55 wet DCOF* (manufacturer declared)	service drives & spaces w/o high-speed doors & HVAC controls	YES
4.1.5	Oils/Greases	O/G	> 55 wet DCOF* (manufacturer declared)	this standard that impacts service drive & workshop environments	YES

V-Rating:



Designed and Manufactured to be Maintained in a "like new" appearance for the life of the facility.

This is manufactured and designed for use in the service drive environment from AutoStoneUSA using our Clean.TechUSA platform with BrightFinish. BrightFinish is a permanent sealant applied during the kiln firing process which seals the surface micropores and coats the Super.Grip textured surface. BrightFinish coats the Super.Grip Texture surface to keep rubber transfer from permanently embedding into the tile surface texture. BrightFinish aids JLR dealers with your standard cleaning practices because BrightFinish retards permanent surface staining.

AutoStoneUSA BrightFinish helps you maintain your floors in a "like new" appearance for the life of your dealership. This is very important in your service drive and reduces STF events.

Environment of Use Standards

ANSI A326.3 Standards

AutoStoneUSA FL-09 Meets Your Highest

STF (slip, trip, and fall) Requirements

DCOF Rating > .55 DCOF Wet

4.1.4 Exterior, Wet (EW) Environment

4.1.4 Exterior, Wet: See Section 3.4. *Product shall be manufacturer-declared for this category* based on manufacturing parameters, internal quality control criteria, and manufacturer experience with similar surfaces. Attributes to consider include, but are not limited to, product size, texture, structure, and additionally in wet applications, drainage. Products meeting Exterior, Wet criteria may require frequent maintenance to keep clean.

INFORMATIVE NOTE:

Possible Areas of Use: Subject to determination by specifier and the criteria in this standard, may include, but are not limited to, level outdoor living spaces including pool decks, walkways, patios, and sidewalks, where such floors may be walked upon when wet (excluding ice or snow) if level, clean, maintained, and free of standing water or other contaminants.

INFORMATIVE NOTE: In the absence of superseding manufacturer-declared product use classification, excepting where measured DCOF is lower due to the impact of structure on the DCOF measurement, it is generally accepted that hard surface flooring in this category should have at least a minimum wet DCOF value of 0.55, with factors other than wet DCOF also taken into consideration. Such factors include, but are not limited to, expected contaminants, drainage, surface structure, effect of structure on the DCOF measurement, number of grout joints (see Informative Note in Section 9.1.2), traction-enhancing features, and intended use, in addition to the other criteria in this standard. As the suitability of the installed hard surface flooring depends significantly on such factors, a single normative DCOF limit value is not provided.

4.1.5 Oils, Grease (O/G) Environment

4.1.5 Oils/Greases: See Section 3.4. *Product shall be manufacturer-declared for this category* where oil, grease, and/or fats may be present, based on manufacturing parameters, internal quality control criteria, and manufacturer experience with similar surfaces. Attributes to consider include, but are not limited to, product size, texture, structure, and drainage. Products meeting Oils/Greases criteria may require frequent maintenance to keep clean.

INFORMATIVE NOTE:

Possible Areas of Use: Subject to determination by specifier and the criteria in this standard, may include, but are not limited to, level areas regularly exposed to automotive fluids, "back of the house" food and family-style restaurants, food preparation areas with grills or deep-fry equipment, and any area where oil, grease, and/or fats may be present so long as such floors are level, regularly cleaned, maintained, and free of standing water and contaminant build-up.

INFORMATIVE NOTE: In the absence of superseding manufacturer-declared product use classification, excepting where measured DCOF is lower due to the impact of structure on the DCOF measurement, it is generally accepted that hard surface flooring in this category should have at least a minimum wet DCOF value of 0.55, with factors other than wet DCOF also taken into consideration. Such factors include, but are not limited to, expected contaminants, drainage, surface structure, effect of structure on the DCOF measurement, number of grout joints (see Informative Note in Section 9.1.2), traction-enhancing features, and intended use, in addition to the other criteria in this standard. As the suitability of the installed hard surface flooring depends significantly on such factors, a single normative DCOF limit value is not provided.

autostone usa

Jaguar Land Rover ARCH Program



MODERN LUXURY ARCH TILE SELECTION

MADE IN THE

JLR Code: FL-110



Environment of Use: Interior - or - Exterior

Series Name: eShop08USA

eShop8usa
better technology, better results

Color Name: Genesis-Carbon Black

Surface: Super.Grip.BrightFinish



Environment of Use Rating: ANSI A326.3 4.1.3(IW+) Interior Wet Plus
ANSI A326.3 4.1.4 (EW) Exterior Wet
ANSI A326.3 4.1.5 (O/G) Oils Grease

DCOF Rating: > .55 DCOF Wet

Size: 08" x 08" (nominal sizing)

Additional Size Options: 04" x 08" ClinkerShopUSA

(must receive brand variance before using)

Thickness: 10 mm

A326.3 2021	Classification	Reference Category	Criteria	Comments	AutoStoneUSA
4.1.1	Interior, Dry	ID	> 42 dry DCOF* (per Section 10.1)	n/a for automotive retail	YES
4.1.2	Interior, Wet	IW	> 42 wet DCOF* (per Section 9.1)	most retail showroom areas	YES
4.1.3	Interior, Wet Plus	IW+	> 50 wet DCOF* (manufacturer declared)	a case can be made for this lower classification	YES
4.1.4	Exterior Wet	EW	> 55 wet DCOF* (manufacturer declared)	service drives & spaces w/o high-speed doors & HVAC controls	YES
4.1.5	Oils/Greases	O/G	> 55 wet DCOF* (manufacturer declared)	this standard that impacts service drive & workshop environments	YES

V-Rating:



Designed and Manufactured to be Maintained in a "like new" appearance for the life of the facility.

This is manufactured and designed for use in the workshop environment from AutoStoneUSA using our Clean.TechUSA platform with BrightFinish. BrightFinish is a permanent sealant applied during the kiln firing process which seals the surface micropores and coats the Super.Grip textured surface. BrightFinish coats the Super.Grip Texture surface to keep rubber transfer from permanently embedding into the tile surface texture. BrightFinish aids JLR dealers with your standard cleaning practices because BrightFinish retards permanent surface staining.

AutoStoneUSA BrightFinish helps you maintain your floors in a "like new" appearance for the life of your dealership. This is very important in your service drive and reduces STF events.

Environment of Use Standards

ANSI A326.3 Standards

AutoStoneUSA FL-09 Meets Your Highest

STF (slip, trip, and fall) Requirements

DCOF Rating > .55 DCOF Wet

4.1.4 Exterior, Wet (EW) Environment

4.1.4 Exterior, Wet: See Section 3.4. *Product shall be manufacturer-declared for this category based on manufacturing parameters, internal quality control criteria, and manufacturer experience with similar surfaces. Attributes to consider include, but are not limited to, product size, texture, structure, and additionally in wet applications, drainage. Products meeting Exterior, Wet criteria may require frequent maintenance to keep clean.*

INFORMATIVE NOTE:

Possible Areas of Use: Subject to determination by specifier and the criteria in this standard, may include, but are not limited to, level outdoor living spaces including pool decks, walkways, patios, and sidewalks, where such floors may be walked upon when wet (excluding ice or snow) if level, clean, maintained, and free of standing water or other contaminants.

INFORMATIVE NOTE: In the absence of superseding manufacturer-declared product use classification, excepting where measured DCOF is lower due to the impact of structure on the DCOF measurement, it is generally accepted that hard surface flooring in this category should have at least a minimum wet DCOF value of 0.55, with factors other than wet DCOF also taken into consideration. Such factors include, but are not limited to, expected contaminants, drainage, surface structure, effect of structure on the DCOF measurement, number of grout joints (see Informative Note in Section 9.1.2), traction-enhancing features, and intended use, in addition to the other criteria in this standard. As the suitability of the installed hard surface flooring depends significantly on such factors, a single normative DCOF limit value is not provided.

4.1.5 Oils, Grease (O/G) Environment

4.1.5 Oils/Greases: See Section 3.4. *Product shall be manufacturer-declared for this category where oil, grease, and/or fats may be present, based on manufacturing parameters, internal quality control criteria, and manufacturer experience with similar surfaces. Attributes to consider include, but are not limited to, product size, texture, structure, and drainage. Products meeting Oils/Greases criteria may require frequent maintenance to keep clean.*

INFORMATIVE NOTE:

Possible Areas of Use: Subject to determination by specifier and the criteria in this standard, may include, but are not limited to, level areas regularly exposed to automotive fluids, "back of the house" fast food or family-style restaurants, food preparation areas with grills or deep-fry equipment, and any area where oil, grease, and/or fats may be present so long as such floors are level, regularly cleaned, maintained, and free of standing water and contaminant build-up.

INFORMATIVE NOTE: In the absence of superseding manufacturer-declared product use classification, excepting where measured DCOF is lower due to the impact of structure on the DCOF measurement, it is generally accepted that hard surface flooring in this category should have at least a minimum wet DCOF value of 0.55, with factors other than wet DCOF also taken into consideration. Such factors include, but are not limited to, expected contaminants, drainage, surface structure, effect of structure on the DCOF measurement, number of grout joints (see Informative Note in Section 9.1.2), traction-enhancing features, and intended use, in addition to the other criteria in this standard. As the suitability of the installed hard surface flooring depends significantly on such factors, a single normative DCOF limit value is not provided.

autostone usa

Jaguar Land Rover ARCH Program



MODERN LUXURY ARCH TILE SELECTION

MADE IN THE

JLR Code: FL-111



Environment of Use: Interior - or - Exterior

Series Name: eShop08USA

eShop8usa
better technology, better results

Color Name: Alloy Grey

Surface: Super.Grip.BrightFinish



Environment of Use Rating: ANSI A326.3 4.1.3(IW+) Interior Wet Plus
ANSI A326.3 4.1.4 (EW) Exterior Wet
ANSI A326.3 4.1.5 (O/G) Oils Grease

DCOF Rating: > .55 DCOF Wet

Size: 08" x 08" (nominal sizing)

Additional Size Options: 04" x 08" ClinkerShopUSA

(must receive brand variance before using)

Thickness: 10 mm

A326.3 2021	Classification	Reference Category	Criteria	Comments	AutoStoneUSA
4.1.1	Interior, Dry	ID	> 42 dry DCOF* (per Section 10.1)	n/a for automotive retail	YES
4.1.2	Interior, Wet	IW	> 42 wet DCOF* (per Section 9.1)	most retail showroom areas	YES
4.1.3	Interior, Wet Plus	IW+	> 50 wet DCOF* (manufacturer declared)	a case can be made for this lower classification	YES
4.1.4	Exterior Wet	EW	> 55 wet DCOF* (manufacturer declared)	service drives & spaces w/o high-speed doors & HVAC controls	YES
4.1.5	Oils/Greases	O/G	> 55 wet DCOF* (manufacturer declared)	this standard that impacts service drive & workshop environments	YES

V-Rating:



Designed and Manufactured to be Maintained in a "like new" appearance for the life of the facility.

This is manufactured and designed for use in the workshop environment from AutoStoneUSA using our Clean.TechUSA platform with BrightFinish. BrightFinish is a permanent sealant applied during the kiln firing process which seals the surface micropores and coats the Super.Grip textured surface. BrightFinish coats the Super.Grip Texture surface to keep rubber transfer from permanently embedding into the tile surface texture. BrightFinish aids JLR dealers with your standard cleaning practices because BrightFinish retards permanent surface staining.

AutoStoneUSA BrightFinish helps you maintain your floors in a "like new" appearance for the life of your dealership. This is very important in your service drive and reduces STF events.

Environment of Use Standards

ANSI A326.3 Standards

AutoStoneUSA FL-09 Meets Your Highest

STF (slip, trip, and fall) Requirements

DCOF Rating > .55 DCOF Wet

4.1.4 Exterior, Wet (EW) Environment

4.1.4 Exterior, Wet: See Section 3.4. *Product shall be manufacturer-declared for this category* based on manufacturing parameters, internal quality control criteria, and manufacturer experience with similar surfaces. Attributes to consider include, but are not limited to, product size, texture, structure, and additionally in wet applications, drainage. Products meeting Exterior, Wet criteria may require frequent maintenance to keep clean.

INFORMATIVE NOTE:

Possible Areas of Use: Subject to determination by specifier and the criteria in this standard, may include, but are not limited to, level outdoor living spaces including pool decks, walkways, patios, and sidewalks, where such floors may be walked upon when wet (excluding ice or snow) if level, clean, maintained, and free of standing water or other contaminants.

INFORMATIVE NOTE: In the absence of superseding manufacturer-declared product use classification, excepting where measured DCOF is lower due to the impact of structure on the DCOF measurement, it is generally accepted that hard surface flooring in this category should have at least a minimum wet DCOF value of 0.55, with factors other than wet DCOF also taken into consideration. Such factors include, but are not limited to, expected contaminants, drainage, surface structure, effect of structure on the DCOF measurement, number of grout joints (see Informative Note in Section 9.1.2), traction-enhancing features, and intended use, in addition to the other criteria in this standard. As the suitability of the installed hard surface flooring depends significantly on such factors, a single normative DCOF limit value is not provided.

4.1.5 Oils, Grease (O/G) Environment

4.1.5 Oils/Greases: See Section 3.4. *Product shall be manufacturer-declared for this category* where oil, grease, and/or fats may be present, based on manufacturing parameters, internal quality control criteria, and manufacturer experience with similar surfaces. Attributes to consider include, but are not limited to, product size, texture, structure, and drainage. Products meeting Oils/Greases criteria may require frequent maintenance to keep clean.

INFORMATIVE NOTE:

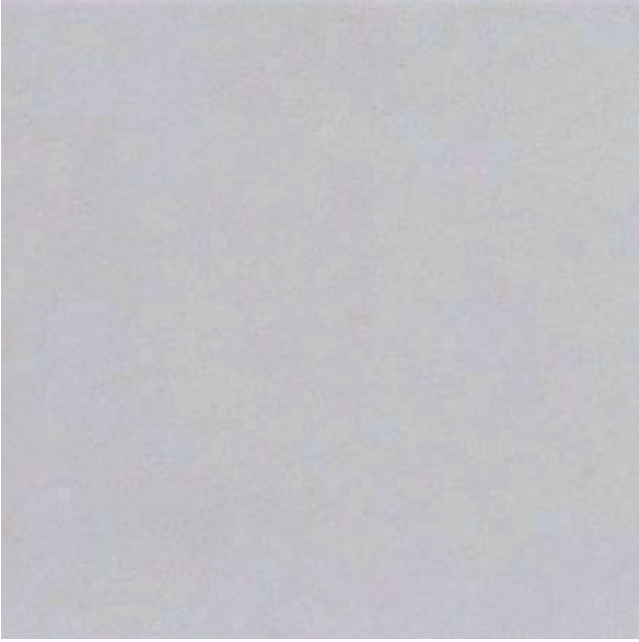
Possible Areas of Use: Subject to determination by specifier and the criteria in this standard, may include, but are not limited to, level areas regularly exposed to automotive fluids, "back of the house" food and family-style restaurants, food preparation areas with grills or deep-fry equipment, and any area where oil, grease, and/or fats may be present so long as such floors are level, regularly cleaned, maintained, and free of standing water and contaminant build-up.

INFORMATIVE NOTE: In the absence of superseding manufacturer-declared product use classification, excepting where measured DCOF is lower due to the impact of structure on the DCOF measurement, it is generally accepted that hard surface flooring in this category should have at least a minimum wet DCOF value of 0.55, with factors other than wet DCOF also taken into consideration. Such factors include, but are not limited to, expected contaminants, drainage, surface structure, effect of structure on the DCOF measurement, number of grout joints (see Informative Note in Section 9.1.2), traction-enhancing features, and intended use, in addition to the other criteria in this standard. As the suitability of the installed hard surface flooring depends significantly on such factors, a single normative DCOF limit value is not provided.



Jaguar Land Rover ARCH Program

MODERN LUXURY ARCH TILE SELECTION



JLR Code: FL-112

Environment of Use: Interior - Wall

Series Name: ShopWall!

Color Name: Granita Grey

Size: 08" x 08" (nominal size)

Finish: Satin

Environment of Use Rating: Not Applicable. Wall Tile (not to be installed on floor).

Thickness: 6 mm



JLR Code: FL-113

Environment of Use: Interior - Wall

Series Name: ShopWall!

Color Name: Anthracite Grey

Size: 08" x 08" (nominal size)

Finish: Satin

Environment of Use Rating: Not Applicable. Wall Tile (not to be installed on floor).

Thickness: 6 mm



Jaguar Land Rover ARCH Program

PORCELAIN STONEWARE

According to: ANSI A137.1 (glazed and unglazed porcelain tiles - P1 Class)



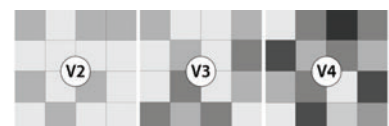
TECHNICAL FEATURES	TEST METHOD	REQUIRED VALUES ANSI A137.1 Porcelain Tiles P1 Class	AVERAGE VALUES Unglazed - UGL	
WATER ABSORPTION	ASTM C373	≤ 0.5%	0.05%	
BREAKING STRENGTH	ASTM C648	≥ 250 lbf	COMPLIANT	
DEEP ABRASION RESISTANCE	ASTM C1243	≤ 175 mm ³	145 mm ³ COMPLIANT (Lux)	
LINEAR THERMAL EXPANSION	ASTM C372	No provision	$\alpha \leq 4.4 \times 10^{-6} \text{ } ^\circ\text{F}^{-1}$ $\alpha \leq 8 \times 10^{-6} \text{ } ^\circ\text{C}^{-1}$	
CRAZING RESISTANCE	ASTM C424	No alterations	NOT APPLICABLE	
STAIN RESISTANCE	ASTM C1378	As indicated by manufacturer	A RESISTANT	
CHEMICAL RESISTANCE (1)	ASTM C650	As indicated by manufacturer	A RESISTANT	
LEAD AND CADMIUM GIVEN OFF	ASTM C895	No provision	NOT APPLICABLE	
FROST RESISTANCE	ASTM C1026	As indicated by manufacturer	RESISTANT	
FLAME SPREAD	ASTM E84	-	CLASS A	
DIMENSIONS	ASTM C485	EDGE WARPAGE Rectified ± 0.40% or ± 0.05 inch* or ± 1.8 mm** *Whichever is less, for tiles up to 24" (610 mm) on any side **Applies to tiles larger than 24" (610 mm) on any side	Calibrated ± 0.50% or max ± 0.07"	COMPLIANT
	ASTM C485	DIAGONAL WARPAGE Rectified ± 0.40% or max ± 0.07"	Calibrated ± 0.50% or max ± 0.07"	COMPLIANT
	ASTM C499	NOMINAL DIMENSIONS Rectified - 3.0% / +2.0% of nominal dimensions	Calibrated ± 3.0% of nominal dimensions	± 1.5%
	ASTM C499	CALIBER RANGE Rectified ± 0.25% or max ± 0.03"	Calibrated ± 0.50% or max ± 0.08"	COMPLIANT
	ASTM C499	THICKNESS ≤ 0.040"	≤ 0.040"	≤ 0.030 inch
	ASTM C502	WEDGING Rectified ± 0.25% or max ± 0.03"	Calibrated ± 0.50% or max ± 0.08"	COMPLIANT



ENVIRONMENT OF USE

A326.3 2021	Classification	Reference Category	Criteria
4.1.1	Interior, Dry	ID	> 42 dry DCOF* (per Section 10.1)
4.1.2	Interior, Wet	IW	> 42 wet DCOF* (per Section 9.1)
4.1.3	Interior, Wet Plus	IW+	> 50 wet DCOF* (manufacturer declared)
4.1.4	Exterior Wet	EW	> 55 wet DCOF* (manufacturer declared)
4.1.5	Oils/Greases	O/G	> 55 wet DCOF* (manufacturer declared)

Tile Variance Rating (V-Rating):





Jaguar Land Rover ARCH Program

Technical Features | Material: Porcelain Stoneware Standard Compliance: According to ISO 13006-G / EN 14411-G, Group Bla

TECHNICAL FEATURES	TEST METHOD	REQUIRED VALUES		AVERAGE VALUES
		ISO 13006-G - EN 14411-G Gruppo/Group Bla		Unglazed - UGL
WATER ABSORPTION	ISO 10545-3	≤ 0,5%		0,05%
BREAKING STRENGTH (S)	ISO 10545-4	≥ 1300 N		COMPLIANT
MODULUS OF RUPTURE	ISO 10545-4	≥ 35 N/mm ²		50 N/mm ²
MECHANICAL REQUIREMENTS CLASS	EN 1339	No provision		U14 (20 mm) (2)
DEEP ABRASION RESISTANCE	ISO 10545-6	≤ 175 mm ³		145 mm ³ COMPLIANT (Lux)
LINEAR THERMAL EXPANSION	ISO 10545-8	No provision		$\alpha \leq 7 \times 10^{-6} \text{ }^{\circ}\text{C}^{-1}$
CRAZING RESISTANCE	ISO 10545-11	No alterations		NOT APPLICABLE
STAIN RESISTANCE	ISO 10545-14	Classe/Class 3 min.		RESISTANT
CHEMICAL RESISTANCE (1)	ISO 10545-13			RESISTANT
LEAD AND CADMIUM GIVEN OFF	ISO 10545-15	No provision		NOT APPLICABLE
FROST RESISTANCE	ISO 10545-12	No alterations		RESISTANT
FIRE REACTION	EN 13823 EN 9239-1	CPR (UE) 305/2011 2000/147/CE UNI EN 13501-1		CLASSE/CLASS A1 (wall) CLASSE/CLASS A1 _s (floor)
THERMAL CONDUCTIVITY	EN 12524	-		$\lambda = 1,3 \text{ W/m}^{\circ}\text{K}$ $\lambda = 0,7 \text{ Btu/ft h}^{\circ}\text{F}$
DIMENSIONS	ISO 10545-2	LENGTH AND WIDTH	Rectified ± 0,3% max ± 1 mm	COMPLIANT
		STRAIGHTNESS OF SIDES	Rectified ± 0,3% max ± 0,8 mm	COMPLIANT
		RECTANGULARITY	Rectified / ± 0,3% max ± 1,5 mm	COMPLIANT
		FLATNESS	Rectified ± 0,4% max ± 1,8 mm	COMPLIANT
		THICKNESS	± 5% max ± 0,5 mm	COMPLIANT



Jaguar Land Rover ARCH Program

Driving Sustainability Beneath Your Feet

At the intersection of design, durability, and environmental responsibility lies **our porcelain tile flooring** – a sustainable surface solution engineered to meet the premium expectations of Jaguar Land Rover and their dealership network and supporting your global sustainability ambitions.

Circular Manufacturing Process

Our porcelain tiles are made from up to **40% pre-consumer recycled content**, including reclaimed clay, feldspar, and scrap ceramics from the manufacturing process. This reduces raw material extraction and diverts industrial waste from landfills.

Our manufacturing partners utilize **closed-loop water recycling** systems, ensuring nearly zero water waste during production — a key win for water stewardship, especially in drought-prone manufacturing regions.

Low-Carbon Footprint

Our tile manufacturing partners operate using **advanced kiln technology** to cut emissions. Through lifecycle analysis, our porcelain tiles demonstrate a **low embodied carbon**, especially when compared to synthetic or petrochemical-based flooring solutions.

For example, compared to vinyl composition tile (VCT), porcelain tile can offer up to a **30–40% reduction in lifecycle carbon emissions**.

Durability = Less Replacement = Less Waste

Porcelain tiles have a **lifespan of 50+ years**, requiring minimal maintenance and replacement. Its resistance to wear, chemicals, and moisture makes it ideal for high-traffic areas like showrooms, service bays, and office environments.

Fewer replacements over time means **less environmental impact from disposal and manufacturing** — a clear contributor to circular building practices.

Green Certifications

Our products are:

- **GREENGUARD® Gold Certified** for low chemical emissions.
- Eligible for **LEED and BREEAM credits**.
- Manufactured in facilities that comply with **ISO 14001 Environmental Management Standards**.



We also offer **EPDs (Environmental Product Declarations)** and **HPDs (Health Product Declarations)** to provide full transparency — a crucial value for environmentally conscious global brands like JLR.

Designing for the Future Together

Porcelain tile flooring is more than a design choice — it's a **sustainable infrastructure decision**. When integrated into JLR's showrooms, offices, or production facilities, it visibly and materially supports your re-imagine strategy: de-carbonizing, modernizing, and elevating every aspect of your brand. **Let's drive forward — from the ground up.**

Only AutoStoneUSA is Made in the USA to support JLR. Only Made in the USA (domestic) manufacturing can meet JLR's sustainability goals. AutoStoneUSA meets and exceeds your carbon footprint, fossil fuel usage, and sustainability goals - and more!

AutoStoneUSA Jaguar Land Rover ARCH Team

Send all pricing requests to: jlr@autostoneusa.com

AutoStoneUSA Website: autostoneusa.com

AutoStoneUSA JLR Webpage: <https://autostoneusa.com/jlr/>

Call for pricing & help: 214-393-4875 phone



Jaguar Land RoverSales Team

jlr@autostoneusa.com



Madison Wilson
Program Manager
214-393-4861 direct dial
madison@autostoneusa.com

**autostone
usa**



Jana Manzella
Architectural Liaison &
Program Development Manager
931-494-6165 mobile/text
jana@autostoneusa.com

**autostone
usa**



Barry Wells
President, Owner, Founder
214-393-4862 direct dial
214-830-1206 mobile
barry@autostoneusa.com

**autostone
usa**

