

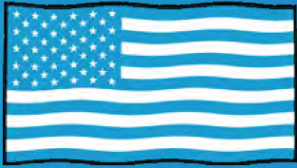
autostone usa



Acura

Guidebook of Approved Tile Materials

2025 Edition



MADE IN AMERICA



[AutoStoneUSA.com](https://www.AutoStoneUSA.com)

© 2025 AutoStone Floor Systems, All Rights Reserved.





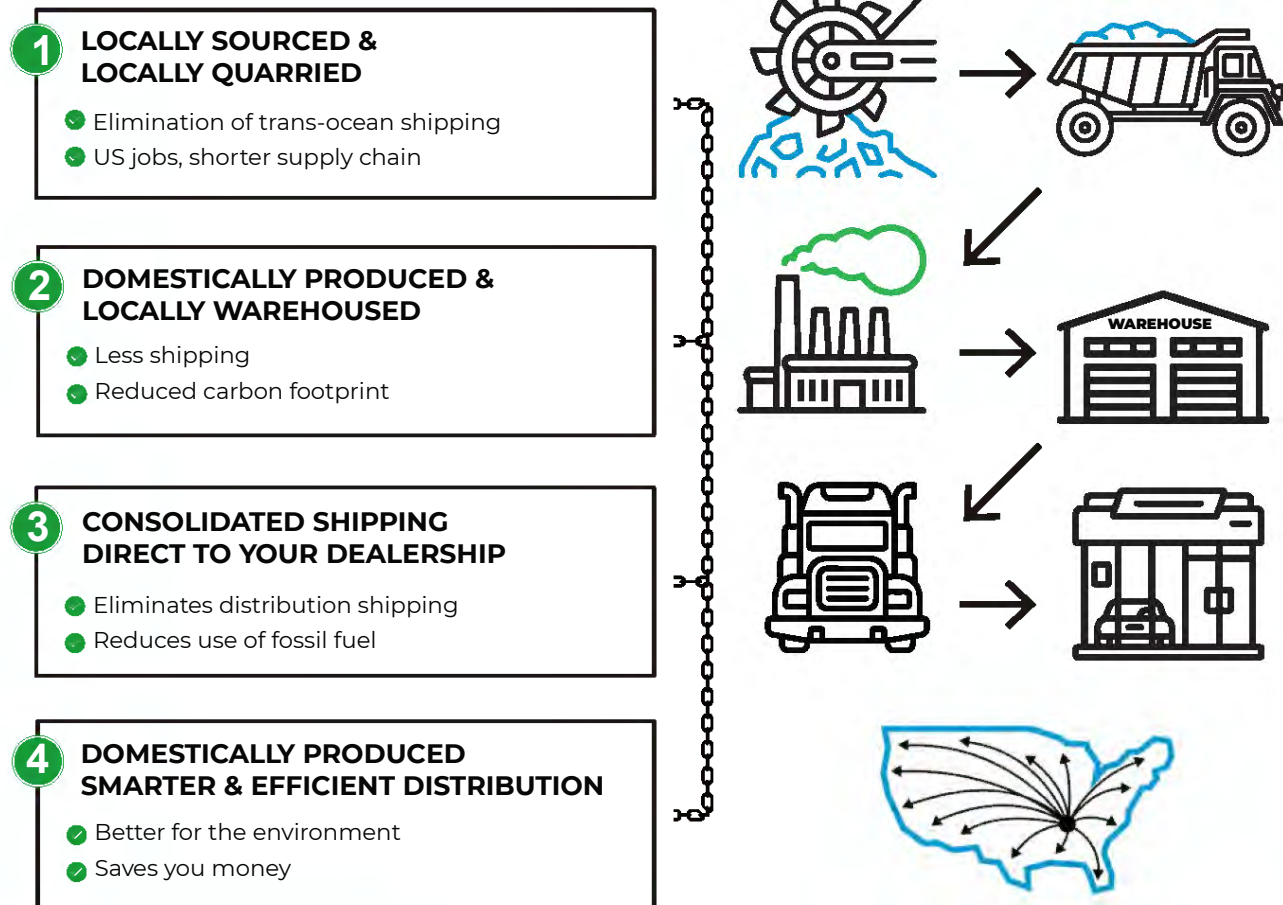
MADE IN USA

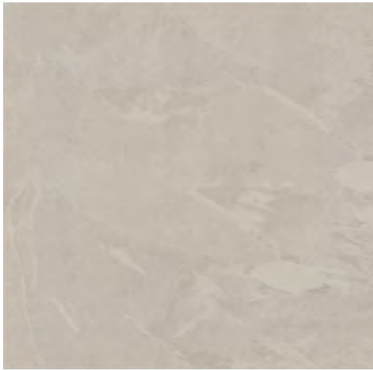


Q2KD



QUARRY TO KILN DISTRIBUTION MODEL





Showroom Tile

Code: T-4

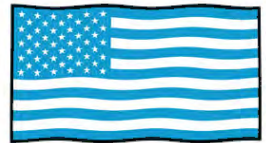
Series: Zero Point

Color: Grey

Finish: Natural | Honed

Size: 32" x 32" (U.S. Nominal Dimensions)

Can ship on same truck with all AutoStoneUSA tile.



USA MANUFACTURED



Showroom Tile

Code: T-3

Series: Zero Point

Color: Lava

Finish: Natural | Honed

Size: 32" x 32" (U.S. Nominal Dimensions)

Can ship on same truck with all AutoStoneUSA tile.





Showroom Tile

Code: T-4

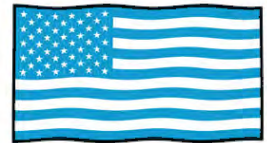
Series: Forms 2.0

Color: Silver Grey

Finish: Natural | Honed

Size: 32" x 32" (U.S. Nominal Dimensions)

Can ship on same truck with all AutoStoneUSA tile.



USA MANUFACTURED



Showroom Tile

Code: T-3

Series: Forms 2.0

Color: Midnight

Finish: Natural | Honed

Size: 32" x 32" (U.S. Nominal Dimensions)

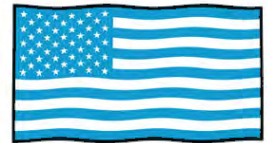
Can ship on same truck with all AutoStoneUSA tile.





Showroom Tile

Code: T-4
 Series: Urban 2.0
 Color: Grey Mist
 Finish: Natural | Honed
 Size: 12" x 24", 24" x 24" (U.S. Nominal Dimensions) - **Standard Production**
 Size: 32" x 32" (U.S. Nominal Dimensions) - **Custom Production**



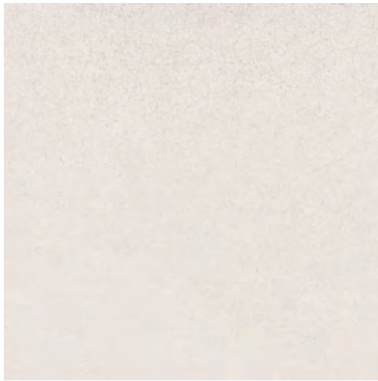
USA MANUFACTURED



Showroom Tile

Code: T-3
 Series: Urban 2.0
 Color: Titan
 Finish: Natural | Honed
 Size: 12" x 24", 24" x 24" (U.S. Nominal Dimensions) - **Standard Production**
 Size: 32" x 32" (U.S. Nominal Dimensions) - **Custom Production**

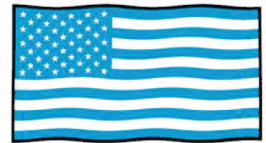




Wall Tile

Code: T-2
 Series: Urban 2.0
 Color: Sea Pearl
 Finish: Natural | Honed
 Size: 12" x 24" (U.S. Nominal Dimensions)

Can ship on same truck with all AutoStoneUSA tile.



USA MANUFACTURED



Wall Tile

Code: T-1
 Series: Urban 2.0
 Color: Metro Black
 Finish: Natural | Honed
 Size: 12" x 24" (U.S. Nominal Dimensions)

Can ship on same truck with all AutoStoneUSA tile.

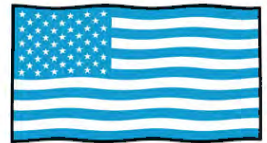




Wall Tile

Code: T-2
Series: Forms 2.0
Color: Ivory
Finish: Natural | Honed
Size: 12" x 24" (U.S. Nominal Dimensions)

Can ship on same truck with all AutoStoneUSA tile.



USA MANUFACTURED



Wall Tile

Code: T-1
Series: Forms 2.0
Color: Midnight
Finish: Natural | Honed
Size: 12" x 24" (U.S. Nominal Dimensions)

Can ship on same truck with all AutoStoneUSA tile.





Technical Specifications

This product meets or exceeds all standards described in ANSI A137.1.

	SPECS	TEST METHOD	INDUSTRY STANDARD	AUTOSTONE VALUES	
	WATER ABSORPTION	ASTM C373	≤0.5%	≤0.4%	
	CERTIFIED PORCELAIN TILE 0.05% or less water absorption	ASTM C373	0.5%	Meeting the water absorption criteria of the American national standard PTCA	
	SURFACE WEAR RESISTANCE	ANSI A137.1	Surface Wear-resistance properties of glazed vitreous and porcelain tiles.	ALL RESIDENTIAL / COMMERCIAL	
	CHEMICAL RESISTANCE	ASTM C650	A tile sample is placed in continuous contact with a variety of chemicals for 24 hours. No sample must show visible defects.	NOT AFFECTED	
	D.C.O.F. AcuTest®	ANSI A326.3	≥0.42 WET	≥0.42 WET	
	STAIN RESISTANCE	ASTM C1378	Surfaces are exposed to staining agents for 24 hours followed by four cleaning procedures. Results are recorded post cleaning.	NOT AFFECTED	
	BREAKING STRENGTH	ASTM C648	≥250 lbf	8mm ≥300 lbf 10mm ≥400 lbf	
	RESISTANCE TO FREEZE	ASTM C1026	A tile sample is subjected to repeated processes of freezing and thawing. Sample must show no visible defects.	RESISTANT	
	WARPAGE EDGE	ASTM C485	±0.40% or ±0.05 in (±1.8 mm)	± 0.40%	Rectified
	WARPAGE DIAGONAL	ASTM C485	±0.40% or ±0.07 in (±1.8 mm)	± 0.40%	Rectified
	WEDGING	ASTM C502	±0.25% or ±0.03 in (±0.8 mm)	± 0.25%	Rectified
	WARPAGE EDGE	ASTM C485	±0.50% or ±0.07 in (±1.8 mm)	± 0.50%	Calibrated
	WARPAGE DIAGONAL	ASTM C485	±0.50% or ±0.07 in (±1.8 mm)	± 0.50%	Calibrated
	WEDGING	ASTM C502	±0.50% or ±0.08 in (±2.0 mm)	± 0.50%	Calibrated
	THICKNESS	ASTM C499	Range: ± 0.04 in	≤0.04 in	

• Due to the inherent nature of fired porcelain tile, it is important to note that the coefficient of friction may vary within and between product runs.



Series: DriveSeries08USA
Color: Alloy Grey
Finish: Super.Grip3L.Brightfinish
Size: 8" x 8"
Surface Traction Conforms to:
 ANSI A326.3 Use Category: 4.1.3
 Interior Wet Plus (IW+). 4.1.4
 Exterior Wet (EW).
 4.1.5 Oils/Grease (O/G).

brightfinish
 ultra cleanable technology

DriveSeries8USA

advanced surface technology

Below: actual color varies, example is only representative



Grout: Laticrete Permacolor Select 78 SterlingSilver
Thinset: LHT Plus



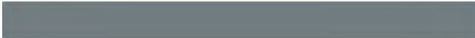
MADE IN USA



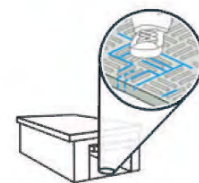
Series: DriveSeries08USA
Color: Smoke Grey
Finish: Super.Grip3L.Brightfinish
Size: 8" x 8"
Surface Traction Conforms to:
 ANSI A326.3 Use Category: 4.1.3
 Interior Wet Plus (IW+). 4.1.4
 Exterior Wet (EW).
 4.1.5 Oils/Grease (O/G).

brightfinish
 ultra cleanable technology

Below: actual color varies, example is only representative



Grout: Laticrete Permacolor Select 42 Platinum
Thinset: LHT Plus



Series: DriveSeries08USA
Color: Genesis-Carbon Black
Finish: Super.Grip3L.Brightfinish
Size: 8" x 8"
Surface Traction Conforms to:
 ANSI A326.3 Use Category: 4.1.3
 Interior Wet Plus (IW+). 4.1.4
 Exterior Wet (EW).
 4.1.5 Oils/Grease (O/G).

brightfinish
 ultra cleanable technology

Below: actual color varies, example is only representative



Grout: Laticrete Permacolor Select 60 Dusty Grey
Thinset: LHT Plus

Advantages

1. Advanced surface technology to better manage STF (slip, trip & fall) risk.
2. Surface has repeating lines elevated above the bed of the tile. Designed for greater foot, shoe-sole traction.
3. Includes Super.Grip. Advanced technology with "nano-textured" particles which increase surface traction.
4. Includes brightfinish. It will not permanently stain or darken when properly cleaned.

AutoStoneUSA Manufactured Declared Use

Evaluate for use in automotive workshop and service drive environments.

4.1.4 Exterior, Wet (EW) - level outdoor spaces walkways, sidewalks, where such floors may be walked upon when wet (excluding ice or snow) if level, clean, maintained and free of standing water or other contaminants.

4.1.5 Oils/Greases (O/G) - level areas regularly exposed to automotive fluids, etc., so long as such floors are level, regularly cleaned, maintained and free of standing water and contaminant build-up.

Declared Product Use & DCOF Requirement

Meets and exceeds .55 DCOF rating, appropriate for this environment of use: ANSI A326.3
 4.1.3 Interior Wet Plus (IW+).
 ANSI A326.3 4.1.4 Exterior Wet (EW).
 ANSI A326.3 4.1.5 Oils/Grease (O/G).



Series: eShop08USA

Color: Alloy Grey

Finish: Super.Grip.Brightfinish

Size: 8" x 8"

Surface Traction Conforms to:

ANSI A326.3 Use Category: 4.1.3

Interior Wet Plus (IW+). 4.1.4

Exterior Wet (EW).

4.1.5 Oils/Grease (O/G).

brightfinish
ultra-cleanable technology

eShop8usa
better technology, better results

Below: actual color varies, example is only representative

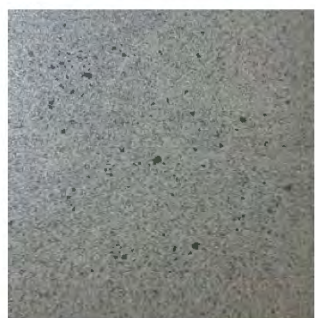


Grout: Laticrete Permacolor Select 78 SterlingSilver

Thinset: LHT Plus



MADE IN USA



Series: eShop08USA

Color: Smoke Grey

Finish: Super.Grip.Brightfinish

Size: 8" x 8"

Surface Traction Conforms to:

ANSI A326.3 Use Category: 4.1.3

Interior Wet Plus (IW+). 4.1.4

Exterior Wet (EW).

4.1.5 Oils/Grease (O/G).

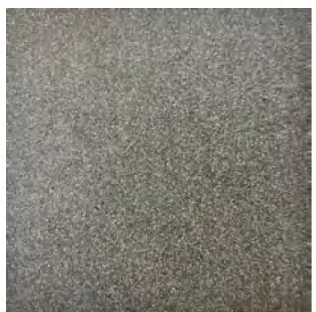
brightfinish
ultra-cleanable technology

Below: actual color varies, example is only representative



Grout: Laticrete Permacolor Select 42 Platinum

Thinset: LHT Plus



Series: eShop08USA

Color: Genesis-Carbon Black

Finish: Super.Grip.Brightfinish

Size: 8" x 8"

Surface Traction Conforms to:

ANSI A326.3 Use Category: 4.1.3

Interior Wet Plus (IW+). 4.1.4

Exterior Wet (EW).

4.1.5 Oils/Grease (O/G).

brightfinish
ultra-cleanable technology

Below: actual color varies, example is only representative



Grout: Laticrete Permacolor Select 60 Dusty Grey

Thinset: LHT Plus

Advantages

1. Advanced surface technology to better manage STF (slip, trip & fall) risk.
2. Surface has flat textured surface with enhanced surface traction. Designed for greater foot, shoe-sole traction.
3. Includes Super.Grip. Advanced technology with "nano-textured" particles which increase surface traction.
4. Includes brightfinish. It will not permanently stain or darken when properly cleaned.

AutoStoneUSA Manufactured Declared Use

Evaluate for use in automotive workshop and service drive environments.

4.1.4 Exterior, Wet (EW) - level outdoor spaces walkways, sidewalks, where such floors may be walked upon when wet (excluding ice or snow) if level, clean, maintained and free of standing water or other contaminants.

4.1.5 Oils/Greases (O/G) - level areas regularly exposed to automotive fluids, etc., so long as such floors are level, regularly cleaned, maintained and free of standing water and contaminant build-up.

Declared Product Use & DCOF Requirement

Meets and exceeds .55 DCOF rating, appropriate for this environment of use: ANSI A326.3

4.1.3 Interior Wet Plus (IW+).

ANSI A326.3 4.1.4 Exterior Wet (EW).

ANSI A326.3 4.1.5 Oils/Grease (O/G).



eShop8usa
better technology, better results

Series: eShop08USA

Color: Alloy Grey

Finish: Super.Grip.Brightfinish

Size: 8" x 8"

Surface Traction Conforms to:

ANSI A326.3 Use Category: 4.1.3

Interior Wet Plus (IW+). 4.1.4

Exterior Wet (EW).

4.1.5 Oils/Grease (O/G).



brightfinish
ultra-cleanable technology



DriveSeries8USA
advanced surface technology

Series: DriveSeries08USA

Color: Alloy Grey

Finish: Super.Grip3L.Brightfinish

Size: 8" x 8"

Surface Traction Conforms to:

ANSI A326.3 Use Category: 4.1.3

Interior Wet Plus (IW+). 4.1.4

Exterior Wet (EW).

4.1.5 Oils/Grease (O/G).



brightfinish
ultra-cleanable technology



Series: eShop08USA

Color: Smoke Grey

Finish: Super.Grip.Brightfinish

Size: 8" x 8"

Surface Traction Conforms to:

ANSI A326.3 Use category: 4.1.3

Interior Wet Plus (IW+). 4.1.4

Exterior Wet (EW).

4.1.5 Oils/Grease (O/G).



brightfinish
ultra-cleanable technology



Series: DriveSeries08USA

Color: Smoke Grey

Finish: Super.Grip3L.Brightfinish

Size: 8" x 8"

Surface Traction Conforms to:

ANSI A326.3 Use Category: 4.1.3

Interior Wet Plus (IW+). 4.1.4

Exterior Wet (EW).

4.1.5 Oils/Grease (O/G).



brightfinish
ultra-cleanable technology



Series: eShop08USA

Color: Genesis-Carbon Black

Finish: Super.Grip.Brightfinish

Size: 8" x 8"

Surface Traction Conforms to:

ANSI A326.3 Use Category: 4.1.3

Interior Wet Plus (IW+). 4.1.4

Exterior Wet (EW).

4.1.5 Oils/Grease (O/G).



brightfinish
ultra-cleanable technology



Series: DriveSeries08USA

Color: Genesis-Carbon Black

Finish: Super.Grip3L.Brightfinish

Size: 8" x 8"

Surface Traction Conforms to:

ANSI A326.3 Use Category: 4.1.3

Interior Wet Plus (IW+). 4.1.4

Exterior Wet (EW).

4.1.5 Oils/Grease (O/G).

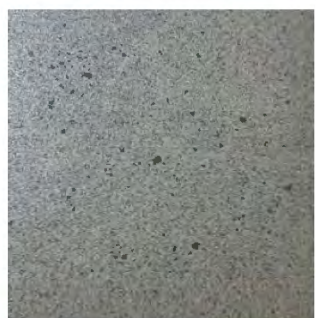


brightfinish
ultra-cleanable technology



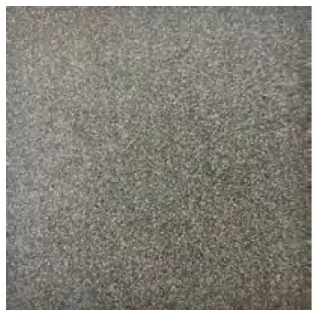
Series: ClinkerShopUSA
Color: Alloy Grey
Finish: Super.Grip.Brightfinish
Size: 4" x 8" x 1/2"
Surface Traction Conforms to:
 ANSI A326.3 Use Category: 4.1.3
 Interior Wet Plus (IW+). 4.1.4
 Exterior Wet (EW).
 4.1.5 Oils/Grease (O/G).

brightfinish
 ultra-cleanable technology



Series: ClinkerShop8USA
Color: Smoke Grey
Finish: Super.Grip.Brightfinish
Size: 4" x 8" x 1/2"
Surface Traction Conforms to:
 ANSI A326.3 Use Category: 4.1.3
 Interior Wet Plus (IW+). 4.1.4
 Exterior Wet (EW).
 4.1.5 Oils/Grease (O/G).

brightfinish
 ultra-cleanable technology



Series: ClinkerShopUSA
Color: Genesis-Carbon Black
Finish: Super.Grip.Brightfinish
Size: 4" x 8" x 1/2"
Surface Traction Conforms to:
 ANSI A326.3 Use Category: 4.1.3
 Interior Wet Plus (IW+). 4.1.4
 Exterior Wet (EW).
 4.1.5 Oils/Grease (O/G).

brightfinish
 ultra-cleanable technology

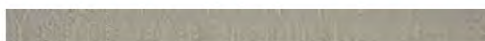
ClinkerShopUSA

Better technology, better performance, American made.

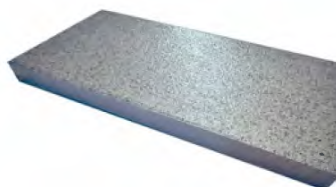


MADE IN USA

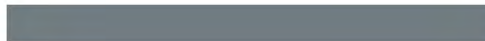
Below: actual color varies, example is only representative



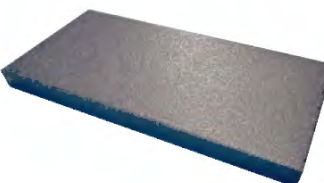
Grout: Laticrete Permacolor Select 78 SterlingSilver
Thinset: LHT Plus



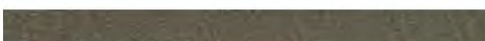
Below: actual color varies, example is only representative



Grout: Laticrete Permacolor Select 42 Platinum
Thinset: LHT Plus



Below: actual color varies, example is only representative



Grout: Laticrete Permacolor Select 60 Dusty Grey
Thinset: LHT Plus

Advantages

1. Advanced surface technology to better manage STF (slip, trip & fall) risk.
2. Surface has Super.Grip surface texture. These nano-granules provide an enhanced surface tension
3. Includes Brightfinish which aids dealers with their cleaning practices. This is a permanent sealant that retards permanent staining and keeps floors in a "like new" appearance.

Manufactured Declared Uses

Evaluate for use in automotive workshop and service drive environments

4.1.4 (Exterior, Wet) - level outdoor spaces walkways, sidewalks, where such floors may be walked upon when wet (excluding ice or snow) if level, clean, maintained and free of standing water or other contaminants.

4.1.5 (Oils/Greases) - level areas regularly exposed to automotive fluids, etc., so long as such floors are level, regularly cleaned, maintained and free of standing water and contaminant build-up. Consult with your architect to determine dealership practices. **Review ANSI A326.3 2021 standard.**

Declared Product Use & DCOF Requirement

Meets and exceeds 55 DCOF rating as required for ANSI A326.3 4.1.3 Exterior Wet.



brightfinish
ultra-cleanable technology

Series: DriveSeries12USA
Color: Alloy Grey
Finish: Traction3L.Brightfinish
Size: 12" x 12"
Surface Traction Conforms to:
ANSI A326.3 Use Category: 4.1.3
Interior Wet Plus (IW+). 4.1.4
Exterior Wet (EW).
4.1.5 Oils/Grease (O/G).

DriveSeries12USA

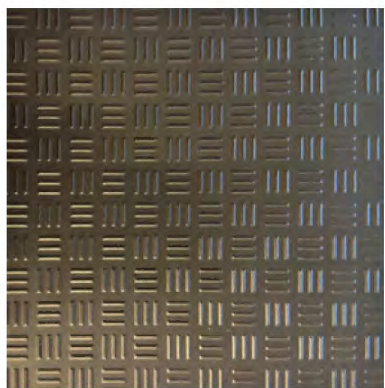
advanced surface technology



MADE IN USA

Below: actual color varies, example is only representative

Grout: Laticrete Permacolor Select 89 Smoke Grey
Thinset: LHT Plus



brightfinish
ultra-cleanable technology

Series: DriveSeries12USA
Color: Carbon Black
Finish: Traction3L.Brightfinish
Size: 12" x 12"
Surface Traction Conforms to:
ANSI A326.3 Use Category: 4.1.3
Interior Wet Plus (IW+). 4.1.4
Exterior Wet (EW).
4.1.5 Oils/Grease (O/G).

Below: actual color varies, example is only representative

Grout: Laticrete Permacolor Select 45 Raven
Thinset: LHT Plus

A permanent enhanced porcelain technology floor system. Elevated traction provides a better surface to manage STF (slip, trip, and fall) risk in your automotive service drive, workshop and tech locker room shower areas. See declared uses below. Should be cleaned with frequent maintenance to keep clean and free of contamination and debris when dealership is operating. Spot spills should be removed immediately and not left on surface. Floor cleaning should include use of de-greasing chemical, floor scrubber sweeper machine with wet vacuum to suck-up dirty water and debris as part of cleaning process.

Advantages

1. Advanced surface technology to better manage STF (slip, trip & fall) risk.
2. Surface has repeating lines elevated above the bed of the tile. Designed for greater foot, shoe-sole traction.
3. Will not permanently stain or darken when properly cleaned.

AutoStoneUSA Manufactured Declared Use

Evaluate for use in automotive workshop and service drive environments.

4.1.3 Interior, Wet Plus (IW+) - evaluate for interior use in automotive workshop and service drive environments with high speed doors and tech locker rooms.

4.1.4 Exterior, Wet (EW) level outdoor spaces walkways, sidewalks, where such floors may be walked upon when wet (excluding ice or snow) if level, clean, maintained and free of standing water or other contaminants.

4.1.5 Oils/Greases (O/G) level areas regularly exposed to automotive fluids, etc., so long as such floors are level, regularly cleaned, maintained and free of standing water and contaminant build-up.

Declared Product Use & DCOF Requirement

Meets and exceeds .55 DCOF (wet) rating, appropriate for this environment of use:

ANSI A326.3 4.1.3 Interior Wet Plus (IW+).
ANSI A326.3 4.1.4 Exterior Wet (EW).
ANSI A326.3 4.1.5 Oils/Grease (O/G).



Series: EnviroShop12USA
Color: Alloy Grey
Finish: Traction.Brightfinish
Size: 12" x 12"
Surface Traction Conforms to:
 ANSI A326.3 Use Category:
 4.1.3 Interior Wet Plus (IW+).



Series: EnviroShop12USA
Color: Smoke Grey
Finish: Traction.Brightfinish
Size: 12" x 12"
Surface Traction Conforms to:
 ANSI A326.3 Use Category:
 4.1.3 Interior Wet Plus (IW+).



Series: EnviroShop12USA
Color: Carbon Black
Finish: Traction.Brightfinish
Size: 12" x 12"
Surface Traction Conforms to:
 ANSI A326.3 Use Category:
 4.1.3 Interior Wet Plus (IW+).



EnviroShop12usa

smarter, better workshops

Below: actual color varies, example is only representative

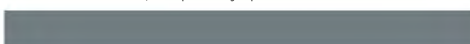


Grout: Laticrete Permacolor Select 89 Smoke Grey
Thinset: LHT Plus



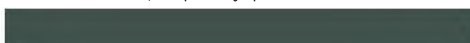
MADE IN USA

Below: actual color varies, example is only representative



Grout: Laticrete Permacolor Select 42 Platinum
Thinset: LHT Plus

Below: actual color varies, example is only representative



Grout: Laticrete Permacolor Select 45 Raven
Thinset: LHT Plus

Advantages

1. Our original workshop floor with textured surface.
2. Surface texture is elevated above the surface bed for easier cleaning.
3. Will not permanently stain or darken when properly cleaned.
4. This product has:

slipresistant
 textured floor surfaces

AutoStoneUSA Manufactured Declared Use

4.1.3 Interior, Wet Plus (IW+) - evaluate for interior use in automotive workshop and service drive environments with high speed doors and tech locker rooms. Enviroshop12USA has a traction surface suitable for interior, wet plus applications, with good drainage. Floors walked on when wet should be level, clean, maintained and free of standing water or other contaminants. Should be cleaned with frequent maintenance to keep clean.

Declared Product Use & DCOF Requirement

Meets and exceeds .50 DCOF (wet) rating, appropriate for this environment of use:

ANSI A326.3 4.1.3 Interior Wet Plus (IW+).

EnviroShop12usa

smarter, better workshops

DriveSeries12USA

advanced surface technology



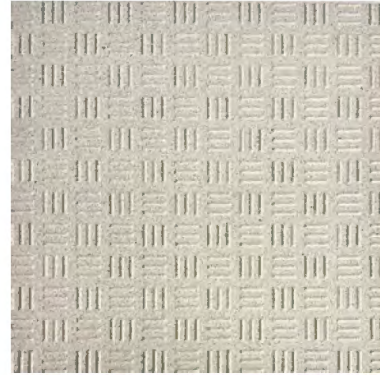
Series: EnviroShop12USA
Color: Alloy Grey
Finish: Traction.Brightfinish

Size: 12" x 12"

Surface Traction Conforms to:
 ANSI A326.3 Use Category: 4.1.3
 Interior Wet Plus (IW+).



brightfinish
 ultra-cleanable technology



Series: DriveSeries12USA
Color: Alloy Grey
Finish: Traction3L.Brightfinish
Size: 12" x 12"

Surface Traction Conforms to:
 ANSI A326.3 Use Category: 4.1.3
 Interior Wet Plus (IW+). 4.1.4
 Exterior Wet (EW).
 4.1.5 Oils/Grease (O/G).



brightfinish
 ultra-cleanable technology



Series: EnviroShop12USA
Color: Smoke Grey
Finish: Traction.Brightfinish
Size: 12" x 12"

Surface Traction Conforms to:
 ANSI A326.3 Use Category: 4.1.3
 Interior Wet Plus (IW+).



brightfinish
 ultra-cleanable technology

DriveSeries12USA
 Smoke Grey
 Currently Not Available

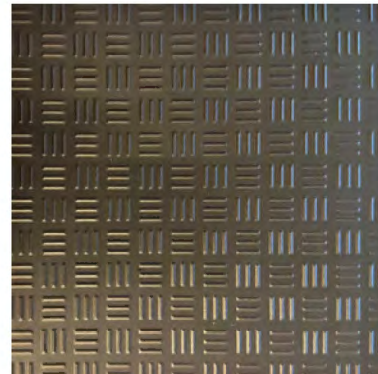


Series: EnviroShop12USA
Color: Carbon Black
Finish: Traction.Brightfinish
Size: 12" x 12"

Surface Traction Conforms to:
 ANSI A326.3 Use Category: 4.1.3
 Interior Wet Plus (IW+).



brightfinish
 ultra-cleanable technology



Series: DriveSeries12USA
Color: Carbon Black
Finish: Traction3L.Brightfinish
Size: 12" x 12"

Surface Traction Conforms to:
 ANSI A326.3 Use Category: 4.1.3
 Interior Wet Plus (IW+). 4.1.4
 Exterior Wet (EW).
 4.1.5 Oils/Grease (O/G).



brightfinish
 ultra-cleanable technology

INDUSTRIAL ENVIRONMENT LVT LARGE (18" x 36") FORMAT FLOOR & WALL PANELS

RA3

Great for Parts, Storage Areas, Janitorial, Lunch & Break Rooms, Tech Locker Room Floors & Walls.

Wainscoting for Hallways, WorkShop Areas & All Back-Office Areas.

18" x 36" large format panels with rugged diamond plated surface texture to help reduce STF (slip, trip, and fall) risk.



**SURFACE
CAMOUFLAGE**

Face Camouflage enhances the beauty of your floor by reducing the negative visual daily contaminants generated during your workday.



**SCRATCH RESISTANT
SURFACE**

Will not dent, scratch, or chip like metal, concrete, epoxy, tile, or other finishes.



**CHEMICAL RESISTANT
SURFACE**

Resistant to water, gasoline, MEK, acetone, motor oil, isopropanol, acetic acid, ammonia, sodium chloride solution, and other chemicals.*



**IMPACT
GUARD SURFACE**

Strong, rugged, and stands up to blunt force impact better than any other surface.



RA IS RECOMMENDED FOR CLIMATE CONTROLLED ENVIRONMENTS WITH A ROOF, WALL AND DOORS FLOOD SAFE, WATER RESISTANT, + SOUND REDUCTION



CLIMATE-CONTROLLED ENVIRONMENTS

For environments with a temperature room range of 40- and 104-degrees.*

*Based on different manufacturers' data and temperature requirements.



**FLOOD SAFE &
WATER RESISTANT**

Panels are moisture-resistant and can be submerged for days and remain bonded.



**LESS NOISE
BETTER CONDITIONS**

Reduces noise decibels (dB) and improves working conditions.

So easy to install that there is no need for expensive, highly skilled labor.

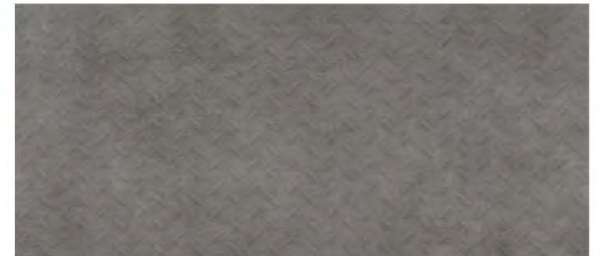
So fast that you can use immediately upon installation; no cure time required.

Panels are installed edge-to-edge, and wall-to-wall for a seamless, beautiful floor.

Commercial workshops install in 1-2 days (depending on size).



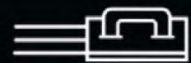
Grey Concrete



Deep Concrete

RA3

RA3 PANEL PRICE



Troweled Adhesive Method*

*Troweled adhesive will be added to your quote

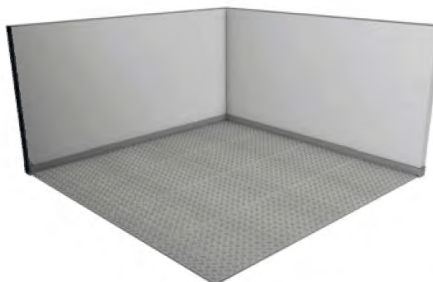
Thickness: 3mm

Size: 18" x 36" Panel (4.5 SQFT Per Panel)



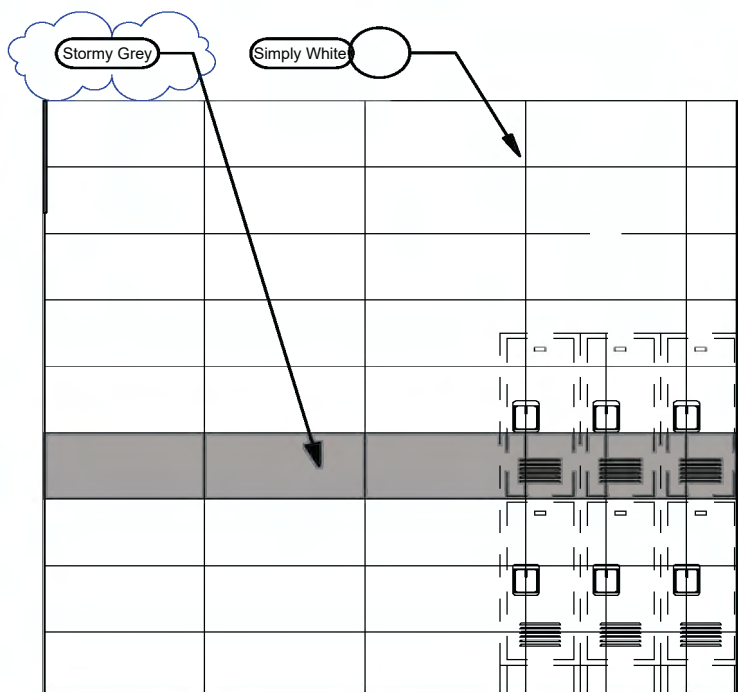
Features Included:

- Rated for climate-controlled environments (home garage)
- Surface Camouflage
- Scratch Resistant Surface
- Chemical Resistant Surface
- Impact Guard Surface
- Industrial Strength 30 mil Wear-Layer



ShopWalls!

12" x 24" Series Modern Lines



Restroom & Tech Walls

ShopWalls! provides automotive retail & service environments an affordable and attractive wall tile material designed for these specific environments.

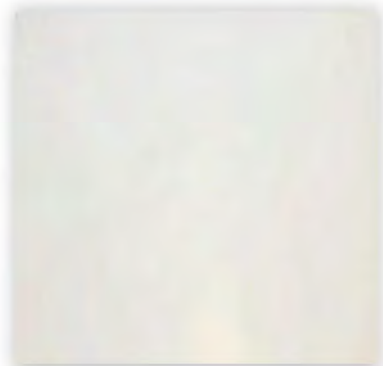
This larger format (12" x 24") tile minimizes grout lines while creating a modern and attractive environment for your service techs. Rectified edges for precise & tight grout joint alignment.

Benefits includes wall surfaces that are easy to clean so they are maintained in a "like-new" appearance.

Pricing is affordable and these materials can ship with other AutoStone materials to reduce freight costs.

Affordable, available, and designed for your tech walls! All materials ship together to reduce repetitive fossil fuel use.

No supply chain challenges or delivery delays.

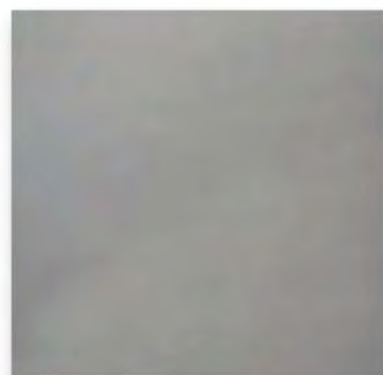


Restroom & Tech Walls

Color: Simply White

Finish: Satin

Size: 12" x 24" (nominal)



Restroom & Tech Walls

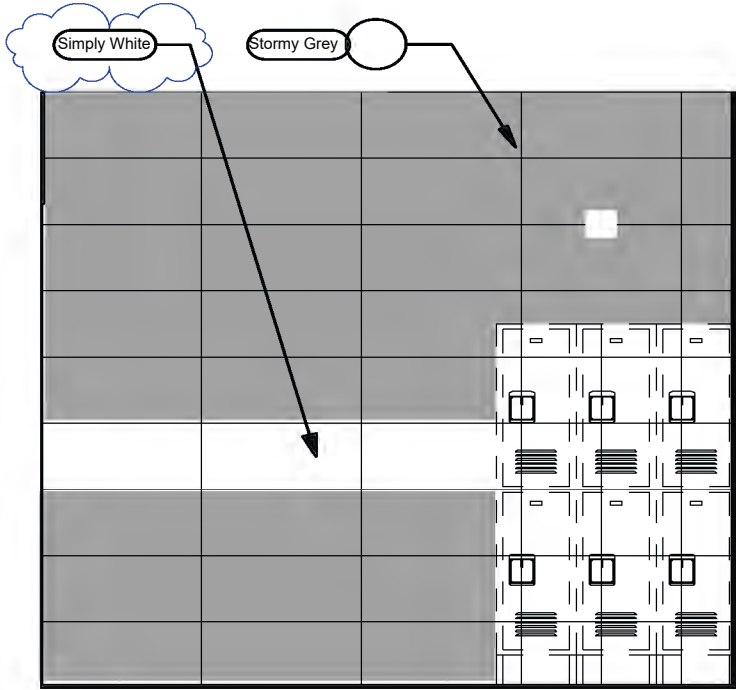
Color: Stormy Grey

Finish: Glossy

Size: 12" x 24" (nominal)

ShopWalls!

12" x 24" Series Modern Lines

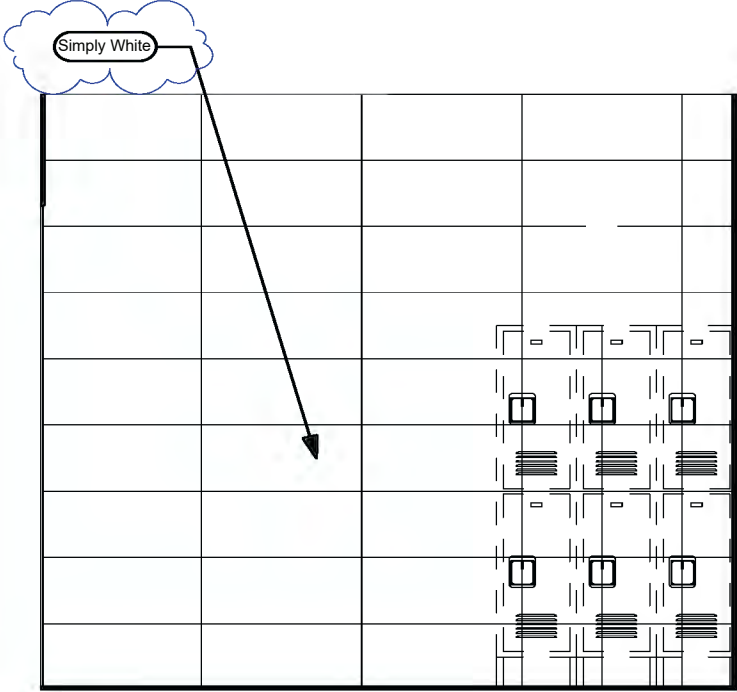
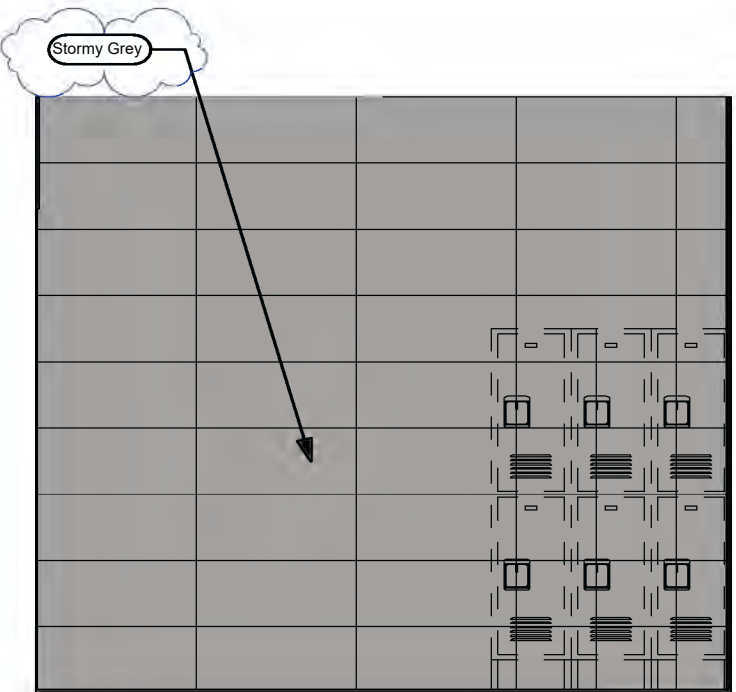


Restroom & Tech Walls

ShopWalls! have rectified edges for precise tile alignment and tight grout joints.

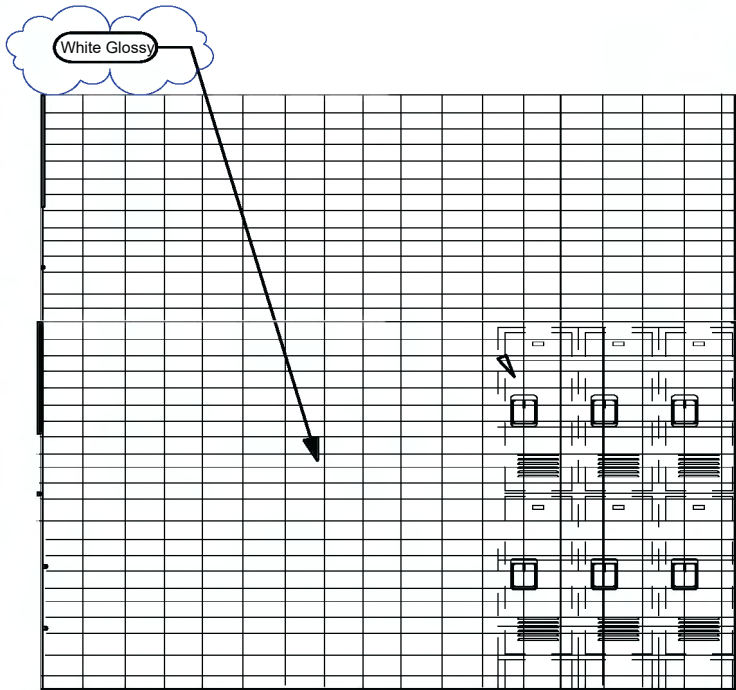
Both colors are the exact size and are designed as a system to support your wet wall, locker room wall environment needs.

Affordable, available and the right choice for your automotive project.



ShopWalls!

03" x 06" Subway Series



Restroom & Tech Walls

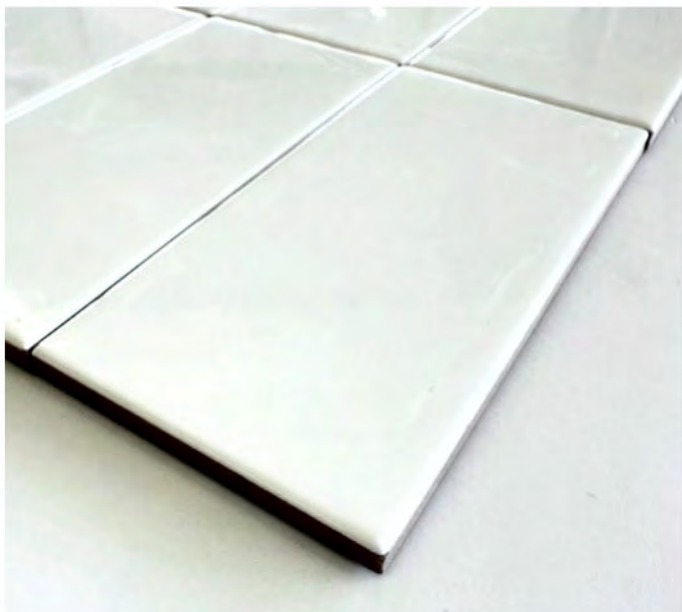
ShopWalls! provides automotive retail & service environments an affordable and attractive wall tile material designed for these specific environments.

This subway series format (03" x 06") tile creates an attractive environment for your service techs. Soft profile edge enhances the design profile of this series.

Pricing is affordable and these materials can ship with other AutoStone materials to reduce freight costs, fossil fuel use and reduces carbon footprint through consolidated supply and shipping.

Affordable, available, and designed for your tech walls! All materials ship together to reduce repetitive fossil fuel use.

No supply chain challenges or delivery delays.



Subway Tile for Restroom & Tech Walls

Color: White
Finish: Glossy
Size: 03" x 06" (nominal)



**Service & Tech Restroom Areas
Wall Tile**

Series: ShopWall!
Color: Granita Grey
Finish: Satin
Size: 8" X 8" U.S. Nominal Dimensions .

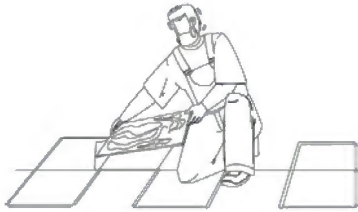


**Service & Tech Restroom Areas
Wall Tile**

Series: ShopWall!
Color: Anthracite Grey
Finish: Satin
Size: 8" X 8" U.S. Nominal Dimensions .

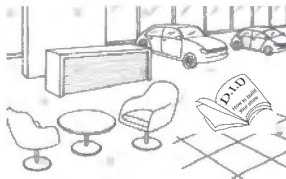
The AutoStoneUSA Acura Team

General and immediate online help.
You can find most information including quotes
on our Acura Brand Webpage



If you are a flooring
contractor and
need pricing

Acura Sales Team
acura@autostoneusa.com
<https://autostoneusa.com/acura/>
214-393-4875 phone



If you are the brand,
brand architect, or
brand CM

Lezlie Ferrell, Director of Sales
lezlie@autostoneusa.com
214-393-4861 direct dial



If you are a car
dealer

Barry Wells, President
barry@autostoneusa.com
214-393-4862 direct dial



If you are the
GC
builder/contractor



If you are the
AOR
local architect

Rachel Metcalf, Architectural Liaison
rachel@autostoneusa.com
214-387-19551 direct dial

Lezlie Ferrell, Director of Sales
lezlie@autostoneusa.com
214-393-4861 direct dial