

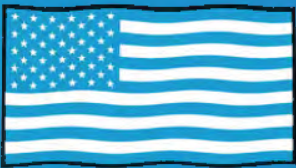
# autostone usa



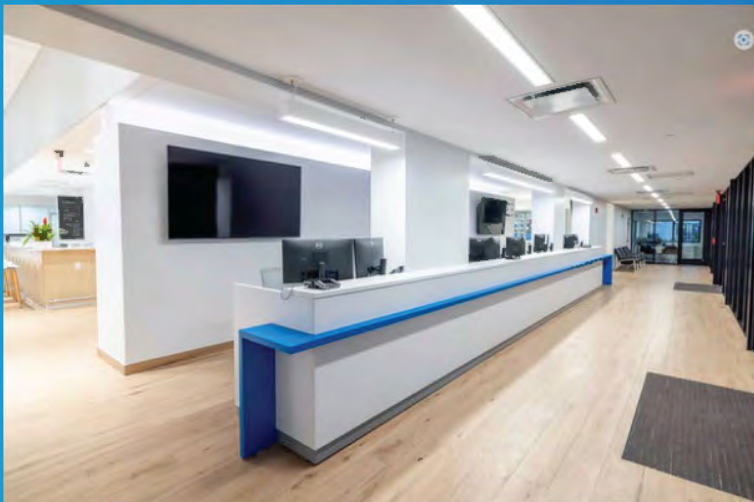
## Honda Blue Stage Tile Guidebook

---

Honda Blue Stage Program  
[AutoStoneUSA.com/Honda](https://AutoStoneUSA.com/Honda)

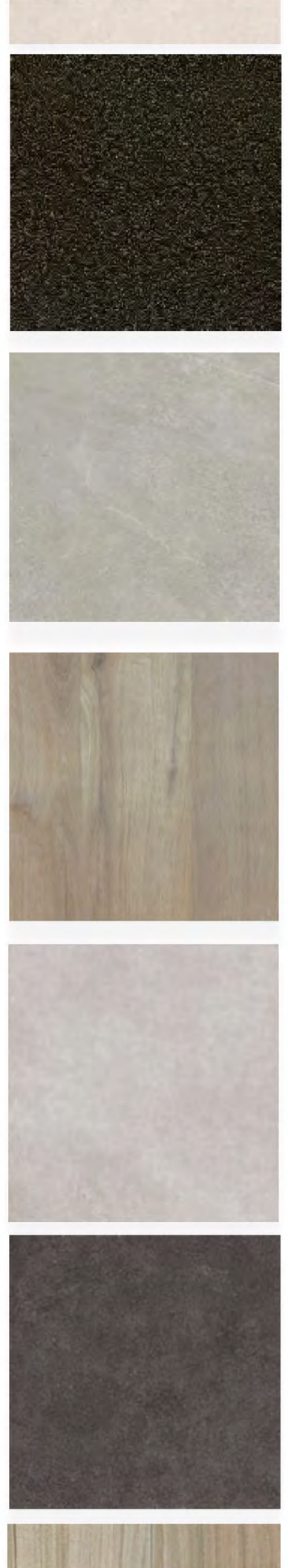


**MADE IN AMERICA**



**AutoStoneUSA.com**

© 2025 AutoStone Floor Systems, All Rights Reserved.





# Q2KD



## QUARRY TO KILN DISTRIBUTION MODEL

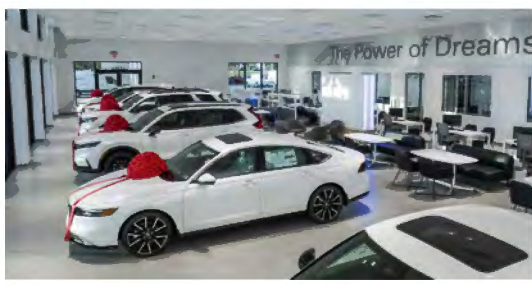
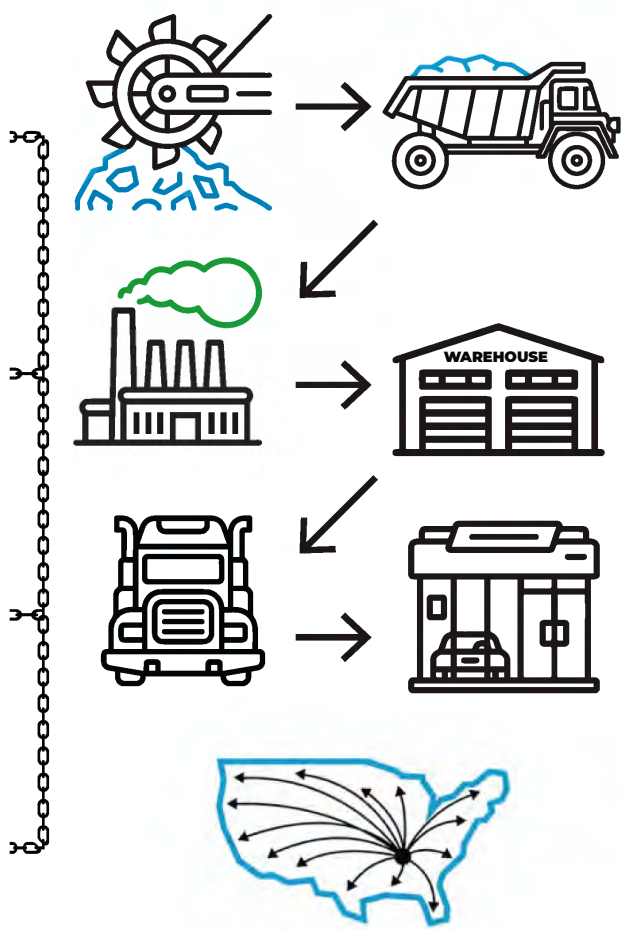
- 1** **LOCALLY SOURCED & LOCALLY QUARRIED**

  - ✓ Elimination of trans-ocean shipping
  - ✓ US jobs, shorter supply chain
- 2** **DOMESTICALLY PRODUCED & LOCALLY WAREHOUSED**

  - ✓ Less shipping
  - ✓ Reduced carbon footprint
- 3** **CONSOLIDATED SHIPPING DIRECT TO YOUR DEALERSHIP**

  - ✓ Eliminates distribution shipping
  - ✓ Reduces use of fossil fuel
- 4** **DOMESTICALLY PRODUCED SMARTER & EFFICIENT DISTRIBUTION**

  - ✓ Better for the environment
  - ✓ Saves you money





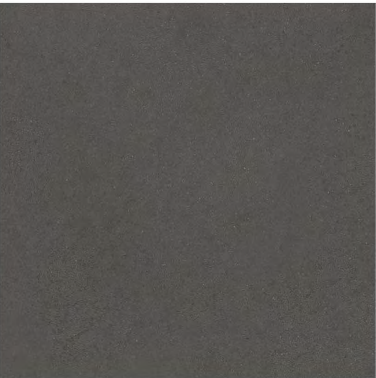


## Showroom Tile

**Code:** T-1  
**Series:** Concrete  
**Color:** Anthracite  
**Finish:** Natural | Honed  
**Size:** 32" x 32" (U.S. Nominal Dimensions)



For use in place of polished concrete and for vehicle display areas and customer restroom.



## Showroom Tile

**Code:** T-1  
**Series:** Urban 2.0  
**Color:** Metro Black  
**Finish:** Natural | Honed  
**Size:** 24" x 24" (U.S. Nominal Dimensions)

For use in place of polished concrete and for vehicle display areas and customer restroom.





## Showroom Tile

**Code:** T-3  
**Series:** Concrete  
**Color:** Smoke  
**Finish:** Natural | Honed  
**Size:** 32" x 32" (U.S. Nominal Dimensions)



MADE IN USA

For use in place of polished concrete and for vehicle display areas and customer restroom.



## Showroom Tile

**Code:** T-3  
**Series:** Forms2.0  
**Color:** Silver Grey  
**Finish:** Natural | Honed  
**Size:** 32" x 32" (U.S. Nominal Dimensions)

For use in place of polished concrete and for vehicle display areas and customer restroom.





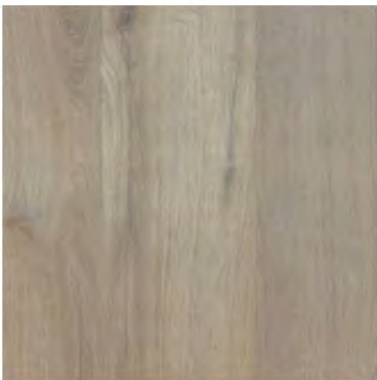
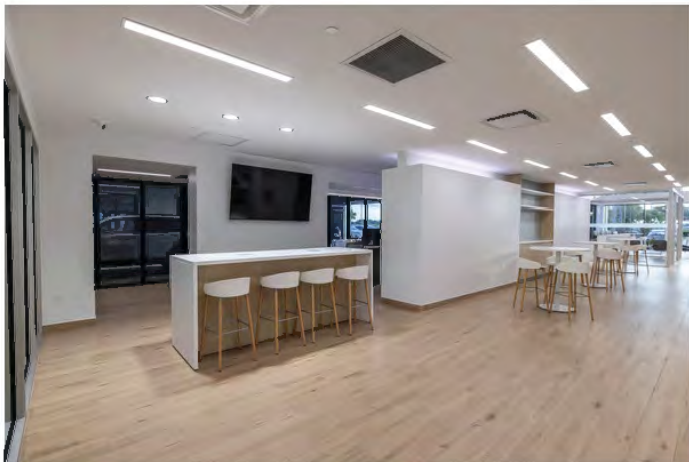


## Showroom Customer Area Porcelain Tile

**Code:** T-4  
**Series:** WoodPlank  
**Color:** Natural Cedar  
**Finish:** Natural  
**Size:** 8" x 48" (U.S. Nominal Dimensions)



MADE IN USA



## Showroom Customer Area LVT -1 Option

**Code:** LVT-1  
**Series:** LVT WoodPlank  
**Color:** Sincere Birch  
**Finish:** Natural  
**Size:** 7.25 x 48" x 2.5 mm  
(U.S. Nominal Dimensions)

LVT WOODPLANK AUTOMOTIVE RETAIL COLLECTION  
LVT (luxury vinyl tile)

**SIZE:** 7.25" x 48"  
**THICKNESS:** 2.5 MM  
**WEAR LAYER:** 22MIL | 0.55 MM

### APPLICATIONS

### FEATURES & BENEFITS



Superior Scratch  
& Stain Resistant



Zero  
Maintenance



Easy  
Clean



Natural Looking  
Design



Heavy  
Foot Traffic



Easy  
Installation



Corporate  
Offices



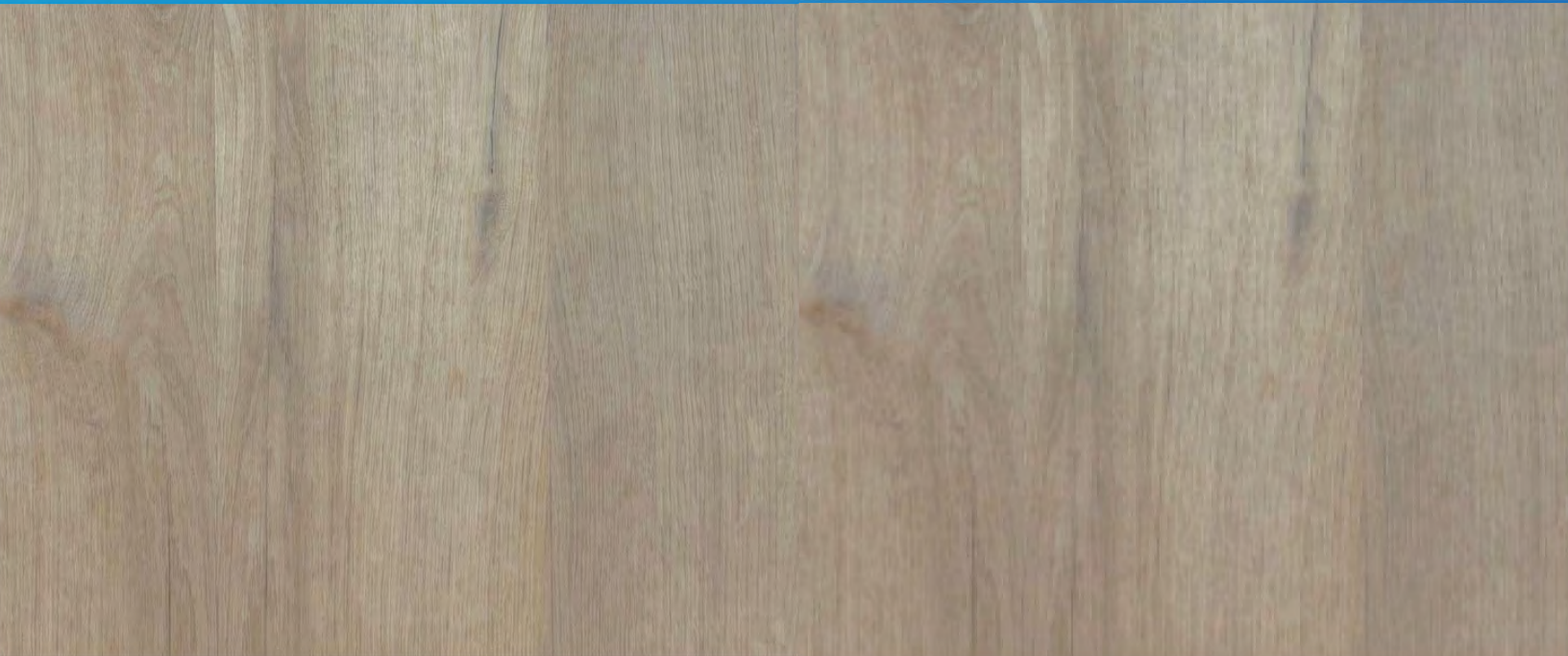
Commercial  
Establishments



Retail  
Outlets



Hotels &  
Hospitality



**SIZE:** 7.25" x 48"

**THICKNESS:** 2.5 MM

**WEAR LAYER:** 22 MIL | 0.55 MM

**PIECES:** 6 PER CARTON

**COVERAGE:** 38.66 SQ FT / 3.59 M2 / CARTON

**INSTALLATION:** DRY BACK LVT

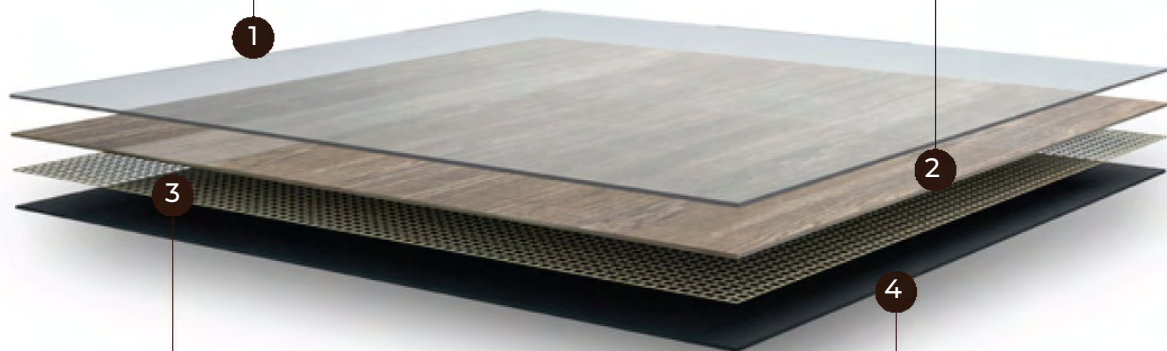
**UV SURFACE TREATMENT:** Thickness In Microns

- Transparent PVC Wear Layer 0.55 MM | 22 MIL
- Super Stain And Scratch Resistant
- Protects From Abrasion

**DECORATIVE FILM**

- Restores The Color And Emboss
- Beautiful Wood Designs
- Natural Looking & Natural Feeling

OVER ALL THICKNESS 2.5 MM



**FIBER GLASS LAYER**

- Provides Dimensional Stability
- Ensures Flat & Even Installation

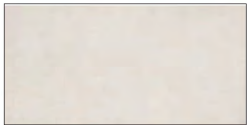
**1 MM PVC BACKING LAYER**

- Insulates Sound
- Provides Underfoot Comfort
- No Bugs, No Termites



Wall Tile

**Code:** T-2  
**Series:** Urban 2.0  
**Color:** Sea Pearl  
**Finish:** Natural | Honed  
**Size:** 12" X 24" - (RECTIED EDGES | U.S. Nominal Dimensions)



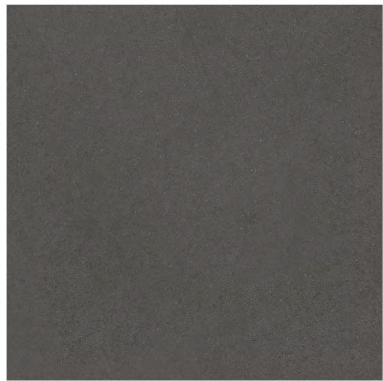
12"x24"



3"x12" Bullnose

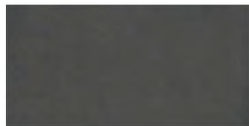


6"x12" Cove base



Wall Tile

**Code:** T-2  
**Series:** Urban 2.0  
**Color:** Metro Black  
**Finish:** Natural | Honed  
**Size:** 12" X 24"- (RECTIED EDGES | U.S. Nominal Dimensions)



12"x24"



3"x12" Bullnose



6"x12" Cove base





**Series:** EnviroShop12USA  
**Color:** Alloy Grey  
**Finish:** Traction.Brightfinish  
**Size:** 12" x 12"  
**Surface Traction Conforms to:**  
 ANSI A326.3 Use Category:  
 4.1.3 Interior Wet Plus (IW+).



**Series:** EnviroShop12USA  
**Color:** Smoke Grey  
**Finish:** Traction.Brightfinish  
**Size:** 12" x 12"  
**Surface Traction Conforms to:**  
 ANSI A326.3 Use Category:  
 4.1.3 Interior Wet Plus (IW+).



**Series:** EnviroShop12USA  
**Color:** Carbon Black  
**Finish:** Traction.Brightfinish  
**Size:** 12" x 12"  
**Surface Traction Conforms to:**  
 ANSI A326.3 Use Category:  
 4.1.3 Interior Wet Plus (IW+).



# EnviroShop12usa

smarter, better workshops

Below: actual color varies, example is only representative

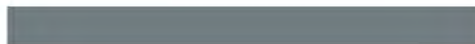


**Grout:** Laticrete Permacolor Select 89 Smoke Grey  
**Thinset:** LHT Plus



MADE IN USA

Below: actual color varies, example is only representative



**Grout:** Laticrete Permacolor Select 42 Platinum  
**Thinset:** LHT Plus

Below: actual color varies, example is only representative



**Grout:** Laticrete Permacolor Select 45 Raven  
**Thinset:** LHT Plus

## Advantages

1. Our original workshop floor with textured surface.
2. Surface texture is elevated above the surface bed for easier cleaning.
3. Will not permanently stain or darken when properly cleaned.
4. This product has:

**slipresistant**  
 textured floor surfaces

## AutoStoneUSA Manufactured Declared Use

**4.1.3 Interior, Wet Plus (IW+)** - evaluate for interior use in automotive workshop and service drive environments with high speed doors and tech locker rooms. Enviroshop12USA has a traction surface suitable for interior, wet plus applications, with good drainage. Floors walked on when wet should be level, clean, maintained and free of standing water or other contaminants. Should be cleaned with frequent maintenance to keep clean.

## Declared Product Use & DCOF Requirement

Meets and exceeds .50 DCOF (wet) rating, appropriate for this environment of use:

ANSI A326.3 4.1.3 Interior Wet Plus (IW+).



## EnviroShop12usa

smarter, better workshops

## DriveSeries12USA

advanced surface technology



**Series:** EnviroShop12USA  
**Color:** Alloy Grey  
**Finish:** Traction.Brightfinish

**Size:** 12" x 12"

**Surface Traction Conforms to:**  
ANSI A326.3 Use Category: 4.1.3  
Interior Wet Plus (IW+).



**Series:** DriveSeries12USA  
**Color:** Alloy Grey  
**Finish:** Traction3L.Brightfinish  
**Size:** 12" x 12"

**Surface Traction Conforms to:**  
ANSI A326.3 Use Category: 4.1.3  
Interior Wet Plus (IW+). 4.1.4  
Exterior Wet (EW).  
4.1.5 Oils/Grease (O/G).



**Series:** EnviroShop12USA  
**Color:** Smoke Grey  
**Finish:** Traction.Brightfinish  
**Size:** 12" x 12"

**Surface Traction Conforms to:**  
ANSI A326.3 Use Category: 4.1.3  
Interior Wet Plus (IW+).

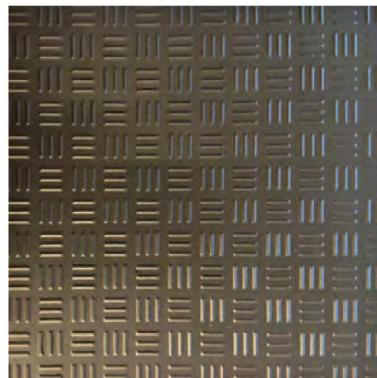


DriveSeries12USA  
Smoke Grey  
Currently Not Available



**Series:** EnviroShop12USA  
**Color:** Carbon Black  
**Finish:** Traction.Brightfinish  
**Size:** 12" x 12"

**Surface Traction Conforms to:**  
ANSI A326.3 Use Category: 4.1.3  
Interior Wet Plus (IW+).



**Series:** DriveSeries12USA  
**Color:** Carbon Black  
**Finish:** Traction3L.Brightfinish  
**Size:** 12" x 12"

**Surface Traction Conforms to:**  
ANSI A326.3 Use Category: 4.1.3  
Interior Wet Plus (IW+). 4.1.4  
Exterior Wet (EW).  
4.1.5 Oils/Grease (O/G).





**Series:** DriveSeries12USA  
**Color:** Alloy Grey  
**Finish:** Traction3L.Brightfinish  
**Size:** 12" x 12"  
**Surface Traction Conforms to:**  
 ANSI A326.3 Use Category: 4.1.3  
 Interior Wet Plus (IW+). 4.1.4  
 Exterior Wet (EW).  
 4.1.5 Oils/Grease (O/G).

## DriveSeries12USA

advanced surface technology

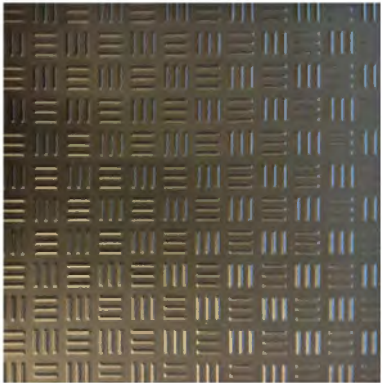


MADE IN USA

Below: actual color varies, example is only representative



**Grout:** Laticrete Permacolor Select 89 Smoke Grey  
**Thinset:** LHT Plus



**Series:** DriveSeries12USA  
**Color:** Carbon Black  
**Finish:** Traction3L.Brightfinish  
**Size:** 12" x 12"  
**Surface Traction Conforms to:**  
 ANSI A326.3 Use Category: 4.1.3  
 Interior Wet Plus (IW+). 4.1.4  
 Exterior Wet (EW).  
 4.1.5 Oils/Grease (O/G).

Below: actual color varies, example is only representative



**Grout:** Laticrete Permacolor Select 45 Raven  
**Thinset:** LHT Plus



A permanent enhanced porcelain technology floor system. Elevated traction provides a better surface to manage STF (slip, trip, and fall) risk in your automotive service drive, workshop and tech locker room shower areas. See declared uses below. Should be cleaned with frequent maintenance to keep clean and free of contamination and debris when dealership is operating. Spot spills should be removed immediately and not left on surface. Floor cleaning should include use of de-greasing chemical, floor scrubber sweeper machine with wet vacuum to suck-up dirty water and debris as part of cleaning process.

### Advantages

1. Advanced surface technology to better manage STF (slip, trip & fall) risk.
2. Surface has repeating lines elevated above the bed of the tile. Designed for greater foot, shoe-sole traction.
3. Will not permanently stain or darken when properly cleaned.

### AutoStoneUSA Manufactured Declared Use

Evaluate for use in automotive workshop and service drive environments.

**4.1.3 Interior, Wet Plus (IW+)** - evaluate for interior use in automotive workshop and service drive environments with high speed doors and tech locker rooms.

**4.1.4 Exterior, Wet (EW)** - level outdoor spaces walkways, sidewalks, where such floors may be walked upon when wet (excluding ice or snow) if level, clean, maintained and free of standing water or other contaminants.

**4.1.5 Oils/Greases (O/G)** - level areas regularly exposed to automotive fluids, etc., so long as such floors are level, regularly cleaned, maintained and free of standing water and contaminant build-up.

### Declared Product Use & DCOF Requirement

Meets and exceeds .55 DCOF (wet) rating, appropriate for this environment of use:

ANSI A326.3 4.1.3 Interior Wet Plus (IW+).  
 ANSI A326.3 4.1.4 Exterior Wet (EW).  
 ANSI A326.3 4.1.5 Oils/Grease (O/G).





**Series:** DriveSeries08USA  
**Color:** Alloy Grey  
**Finish:** Super.Grip3L.Brightfinish  
**Size:** 8" x 8"  
**Surface Traction Conforms to:**  
 ANSI A326.3 Use Category: 4.1.3  
 Interior Wet Plus (IW+). 4.1.4  
 Exterior Wet (EW).  
 4.1.5 Oils/Grease (O/G).



# DriveSeries8USA

advanced surface technology

Below: actual color varies, example is only representative



**Grout:** Laticrete Permacolor Select 78 SterlingSilver  
**Thinset:** LHT Plus



MADE IN USA



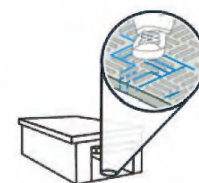
**Series:** DriveSeries08USA  
**Color:** Smoke Grey  
**Finish:** Super.Grip3L.Brightfinish  
**Size:** 8" x 8"  
**Surface Traction Conforms to:**  
 ANSI A326.3 Use Category: 4.1.3  
 Interior Wet Plus (IW+). 4.1.4  
 Exterior Wet (EW).  
 4.1.5 Oils/Grease (O/G).



Below: actual color varies, example is only representative



**Grout:** Laticrete Permacolor Select 42 Platinum  
**Thinset:** LHT Plus



**Series:** DriveSeries08USA  
**Color:** Genesis-Carbon Black  
**Finish:** Super.Grip3L.Brightfinish  
**Size:** 8" x 8"  
**Surface Traction Conforms to:**  
 ANSI A326.3 Use Category: 4.1.3  
 Interior Wet Plus (IW+). 4.1.4  
 Exterior Wet (EW).  
 4.1.5 Oils/Grease (O/G).



Below: actual color varies, example is only representative



**Grout:** Laticrete Permacolor Select 60 Dusty Grey  
**Thinset:** LHT Plus

## Advantages

1. Advanced surface technology to better manage STF (slip, trip & fall) risk.
2. Surface has repeating lines elevated above the bed of the tile. Designed for greater foot, shoe-sole traction.
3. Includes Super.Grip. Advanced technology with "nano-textured" particles which increase surface traction.
4. Includes brightfinish. It will not permanently stain or darken when properly cleaned.

## AutoStoneUSA Manufactured Declared Use

Evaluate for use in automotive workshop and service drive environments.

**4.1.4 Exterior, Wet (EW)** - level outdoor spaces walkways, sidewalks, where such floors may be walked upon when wet (excluding ice or snow) if level, clean, maintained and free of standing water or other contaminants.

**4.1.5 Oils/Greases (O/G)** - level areas regularly exposed to automotive fluids, etc., so long as such floors are level, regularly cleaned, maintained and free of standing water and contaminant build-up.

## Declared Product Use & DCOF Requirement

Meets and exceeds .55 DCOF rating, appropriate for this environment of use: ANSI A326.3  
 4.1.3 Interior Wet Plus (IW+).  
 ANSI A326.3 4.1.4 Exterior Wet (EW).  
 ANSI A326.3 4.1.5 Oils/Grease (O/G).





**Series:** eShop08USA  
**Color:** Alloy Grey  
**Finish:** Super.Grip.Brightfinish  
**Size:** 8" x 8"  
**Surface Traction Conforms to:**  
 ANSI A326.3 Use Category: 4.1.3  
 Interior Wet Plus (IW+). 4.1.4  
 Exterior Wet (EW).  
 4.1.5 Oils/Grease (O/G).



# eShop8usa

better technology, better results

Below: actual color varies, example is only representative



**Grout:** Laticrete Permacolor Select 78 SterlingSilver  
**Thinset:** LHT Plus



MADE IN USA



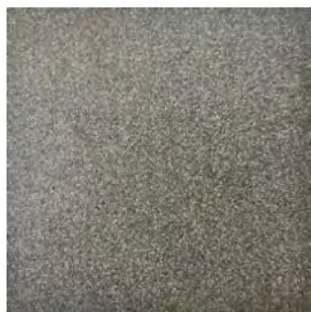
**Series:** eShop08USA  
**Color:** Smoke Grey  
**Finish:** Super.Grip.Brightfinish  
**Size:** 8" x 8"  
**Surface Traction Conforms to:**  
 ANSI A326.3 Use Category: 4.1.3  
 Interior Wet Plus (IW+). 4.1.4  
 Exterior Wet (EW).  
 4.1.5 Oils/Grease (O/G).



Below: actual color varies, example is only representative



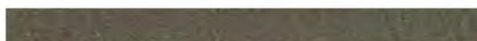
**Grout:** Laticrete Permacolor Select 42 Platinum  
**Thinset:** LHT Plus



**Series:** eShop08USA  
**Color:** Genesis-Carbon Black  
**Finish:** Super.Grip.Brightfinish  
**Size:** 8" x 8"  
**Surface Traction Conforms to:**  
 ANSI A326.3 Use Category: 4.1.3  
 Interior Wet Plus (IW+). 4.1.4  
 Exterior Wet (EW).  
 4.1.5 Oils/Grease (O/G).



Below: actual color varies, example is only representative



**Grout:** Laticrete Permacolor Select 60 Dusty Grey  
**Thinset:** LHT Plus

## Advantages

1. Advanced surface technology to better manage STF (slip, trip & fall) risk.
2. Surface has flat textured surface with enhanced surface traction. Designed for greater foot, shoe-sole traction.
3. Includes Super.Grip. Advanced technology with "nano-textured" particles which increase surface traction.
4. Includes brightfinish. It will not permanently stain or darken when properly cleaned.

### AutoStoneUSA Manufactured Declared Use

Evaluate for use in automotive workshop and service drive environments.

**4.1.4 Exterior, Wet (EW)** - level outdoor spaces walkways, sidewalks, where such floors may be walked upon when wet (excluding ice or snow) if level, clean, maintained and free of standing water or other contaminants.

**4.1.5 Oils/Greases (O/G)** - level areas regularly exposed to automotive fluids, etc., so long as such floors are level, regularly cleaned, maintained and free of standing water and contaminant build-up.

### Declared Product Use & DCOF Requirement

Meets and exceeds .55 DCOF rating, appropriate for this environment of use: ANSI A326.3  
 4.1.3 Interior Wet Plus (IW+).  
 ANSI A326.3 4.1.4 Exterior Wet (EW).  
 ANSI A326.3 4.1.5 Oils/Grease (O/G).



### eShop8usa

better technology, better results

**Series:** eShop08USA

**Color:** Alloy Grey

**Finish:** Super.Grip.Brightfinish

**Size:** 8" x 8"

**Surface Traction Conforms to:**

ANSI A326.3 Use Category: 4.1.3

Interior Wet Plus (IW+). 4.1.4

Exterior Wet (EW).

4.1.5 Oils/Grease (O/G).



**brightfinish**  
ultra-cleanable technology



### DriveSeries8USA

advanced surface technology

**Series:** DriveSeries08USA

**Color:** Alloy Grey

**Finish:** Super.Grip3L.Brightfinish

**Size:** 8" x 8"

**Surface Traction Conforms to:**

ANSI A326.3 Use Category: 4.1.3

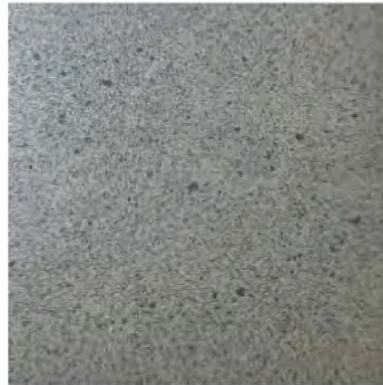
Interior Wet Plus (IW+). 4.1.4

Exterior Wet (EW).

4.1.5 Oils/Grease (O/G).



**brightfinish**  
ultra-cleanable technology



**Series:** eShop08USA

**Color:** Smoke Grey

**Finish:** Super.Grip.Brightfinish

**Size:** 8" x 8"

**Surface Traction Conforms to:**

ANSI A326.3 Use category: 4.1.3

Interior Wet Plus (IW+). 4.1.4

Exterior Wet (EW).

4.1.5 Oils/Grease (O/G).



**brightfinish**  
ultra-cleanable technology



**Series:** DriveSeries08USA

**Color:** Smoke Grey

**Finish:** Super.Grip3L.Brightfinish

**Size:** 8" x 8"

**Surface Traction Conforms to:**

ANSI A326.3 Use Category: 4.1.3

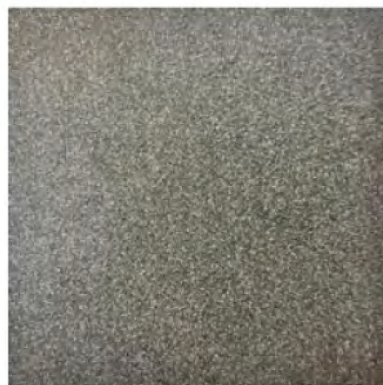
Interior Wet Plus (IW+). 4.1.4

Exterior Wet (EW).

4.1.5 Oils/Grease (O/G).



**brightfinish**  
ultra-cleanable technology



**Series:** eShp0

**Color:** Carbon/Genesis Black

**Finish:** Super.Grip.Brightfinish

**Size:** 8" x 8"

**Surface Traction Conforms to:**

ANSI A326.3 Use Category: 4.1.3

Interior Wet Plus (IW+). 4.1.4

Exterior Wet (EW).

4.1.5 Oils/Grease (O/G).



**brightfinish**  
ultra-cleanable technology



**Series:** DriveSeries08TRÅ

**Color:** Carbon/Genesis Black

**Finish:** Super.Grip3L.Brightfinish

**Size:** 8" x 8"

**Surface Traction Conforms to:**

ANSI A326.3 Use Category: 4.1.3

Interior Wet Plus (IW+). 4.1.4

Exterior Wet (EW).

4.1.5 Oils/Grease (O/G).



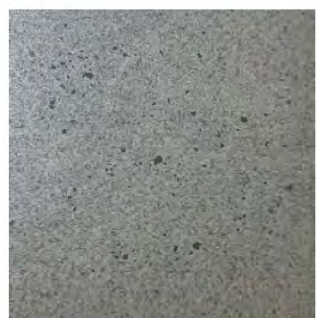
**brightfinish**  
ultra-cleanable technology





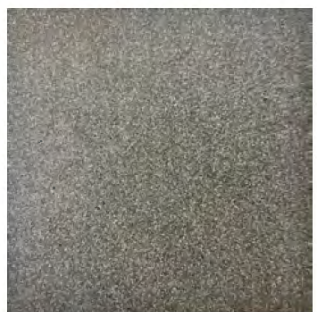
**Series:** ClinkerShopUSA  
**Color:** Alloy Grey  
**Finish:** Super.Grip.Brightfinish  
**Size:** 4" x 8" x 1/2"  
**Surface Traction Conforms to:**  
 ANSI A326.3 Use Category: 4.1.3  
 Interior Wet Plus (IW+). 4.1.4  
 Exterior Wet (EW).  
 4.1.5 Oils/Grease (O/G).

**brightfinish**  
 ultra cleanable technology



**Series:** ClinkerShop8USA  
**Color:** Smoke Grey  
**Finish:** Super.Grip.Brightfinish  
**Size:** 4" x 8" x 1/2"  
**Surface Traction Conforms to:**  
 ANSI A326.3 Use Category: 4.1.3  
 Interior Wet Plus (IW+). 4.1.4  
 Exterior Wet (EW).  
 4.1.5 Oils/Grease (O/G).

**brightfinish**  
 ultra cleanable technology



**Series:** ClinkerShopUSA  
**Color:** Genesis-Carbon Black  
**Finish:** Super.Grip.Brightfinish  
**Size:** 4" x 8" x 1/2"  
**Surface Traction Conforms to:**  
 ANSI A326.3 Use Category: 4.1.3  
 Interior Wet Plus (IW+). 4.1.4  
 Exterior Wet (EW).  
 4.1.5 Oils/Grease (O/G).

**brightfinish**  
 ultra cleanable technology

# ClinkerShopUSA

Better technology, better performance, American made.



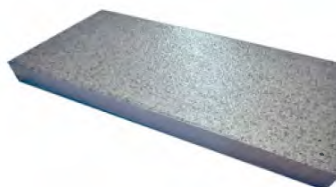
Below: actual color varies, example is only representative



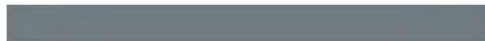
**Grout:** Laticrete Permacolor Select 78 SterlingSilver  
**Thinset:** LHT Plus



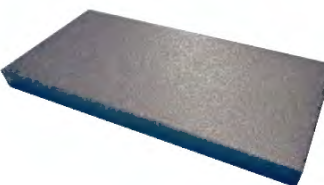
MADE IN USA



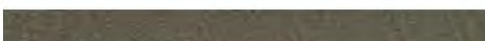
Below: actual color varies, example is only representative



**Grout:** Laticrete Permacolor Select 42 Platinum  
**Thinset:** LHT Plus



Below: actual color varies, example is only representative



**Grout:** Laticrete Permacolor Select 60 Dusty Grey  
**Thinset:** LHT Plus

## Advantages

1. Advanced surface technology to better manage STF (slip, trip & fall) risk.
2. Surface has Super.Grip surface texture. These nano-granules provide an enhanced surface tension
3. Includes Brightfinish which aids dealers with their cleaning practices. This is a permanent sealant that retards permanent staining and keeps floors in a "like new" appearance.

## Manufactured Declared Uses

Evaluate for use in automotive workshop and service drive environments

**4.1.4 (Exterior, Wet)** - level outdoor spaces walkways, sidewalks, where such floors may be walked upon when wet (excluding ice or snow) if level, clean, maintained and free of standing water or other contaminants.

**4.1.5 (Oils/Greases)** - level areas regularly exposed to automotive fluids, etc., so long as such floors are level, regularly cleaned, maintained and free of standing water and contaminant build-up. Consult with your architect to determine dealership practices. **Review ANSI A326.3 2021 standard.**

## Declared Product Use & DCOF Requirement

Meets and exceeds 55 DCOF rating as required for ANSI A326.3 4.1.3 Exterior Wet.



# INDUSTRIAL ENVIRONMENT LVT LARGE (18" x 36") FORMAT FLOOR & WALL PANELS

**RA3**

Great for Parts, Storage Areas, Janitorial, Lunch & Break Rooms, Tech Locker Room Floors & Walls.

Wainscoting for Hallways, WorkShop Areas & All Back-Office Areas.

18" x 36" large format panels with rugged diamond plated surface texture to help reduce STF (slip, trip, and fall) risk.



**SURFACE  
CAMOUFLAGE**

Face Camouflage enhances the beauty of your floor by reducing the negative visual daily contaminants generated during your workday.



**SCRATCH RESISTANT  
SURFACE**

Will not dent, scratch, or chip like metal, concrete, epoxy, tile, or other finishes.



**CHEMICAL RESISTANT  
SURFACE**

Resistant to water, gasoline, MEK, acetone, motor oil, isopropanol, acetic acid, ammonia, sodium chloride solution, and other chemicals.\*

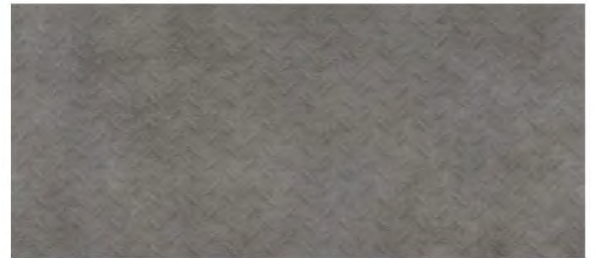


**IMPACT  
GUARD SURFACE**

Strong, rugged, and stands up to blunt force impact better than any other surface.



**Grey Concrete**



**Deep Concrete**

**RA IS RECOMMENDED FOR CLIMATE CONTROLLED ENVIRONMENTS WITH A ROOF, WALL AND DOORS FLOOD SAFE, WATER RESISTANT, + SOUND REDUCTION**



**CLIMATE-CONTROLLED ENVIRONMENTS**

For environments with a temperature room range of 40- and 104-degrees.\*

\*Based on different manufacturers' data and may vary by application.



**FLOOD SAFE &  
WATER RESISTANT**

Panels are moisture-resistant and can be submerged for days and remain bonded.



**LESS NOISE  
BETTER CONDITIONS**

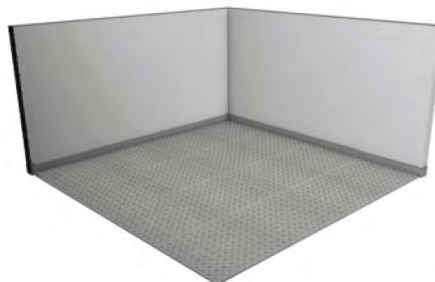
Reduces noise decibels (dB) and improves working conditions.

So easy to install that there is no need for expensive, highly skilled labor.

So fast that you can use immediately upon installation; no cure time required.

Panels are installed edge-to-edge, and wall-to-wall for a seamless, beautiful floor.

Commercial workshops install in 1-2 days (depending on size).


**RA3**

## RA3 PANEL PRICE



Troweled Adhesive Method\*

\*Troweled adhesive will be added to your quote

**Thickness:** 3mm

**Size:** 18" x 36" Panel (4.5 SQFT Per Panel)

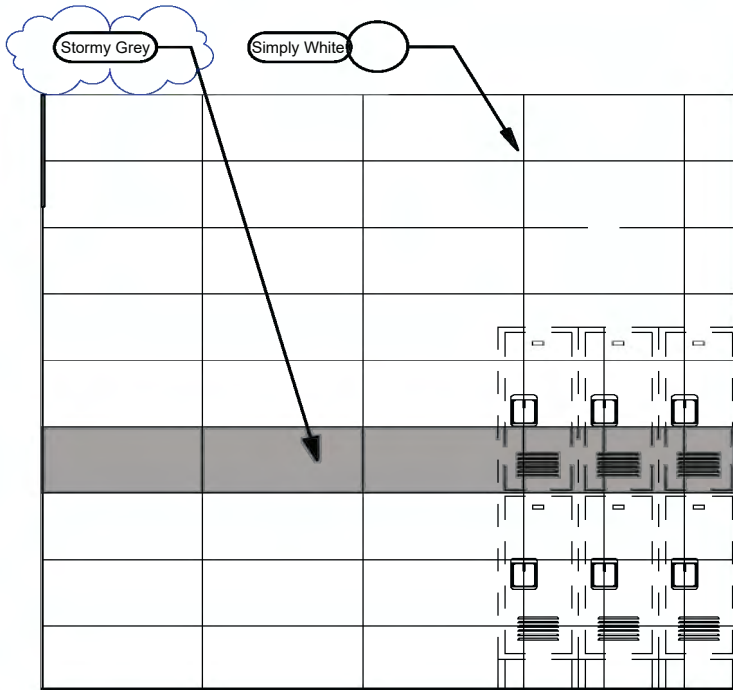


### Features Included:

- Rated for climate-controlled environments (home garage)
- Surface Camouflage
- Scratch Resistant Surface
- Chemical Resistant Surface
- Impact Guard Surface
- Industrial Strength 30 mil Wear-Layer

## ShopWalls!

12" x 24" Series Modern Lines



## Restroom & Tech Walls

**ShopWalls!** provides automotive retail & service environments an affordable and attractive wall tile material designed for these specific environments.

This larger format (12" x 24") tile minimizes grout lines while creating a modern and attractive environment for your service techs. Rectified edges for precise & tight grout joint alignment.

Benefits includes wall surfaces that are easy to clean so they are maintained in a "like-new" appearance.

Pricing is affordable and these materials can ship with other AutoStone materials to reduce freight costs.

Affordable, available, and designed for your tech walls! All materials ship together to reduce repetitive fossil fuel use.

No supply chain challenges or delivery delays.



## Restroom & Tech Walls

**Color:** Simply White

**Finish:** Satin

**Size:** 12" x 24" (nominal)



## Restroom & Tech Walls

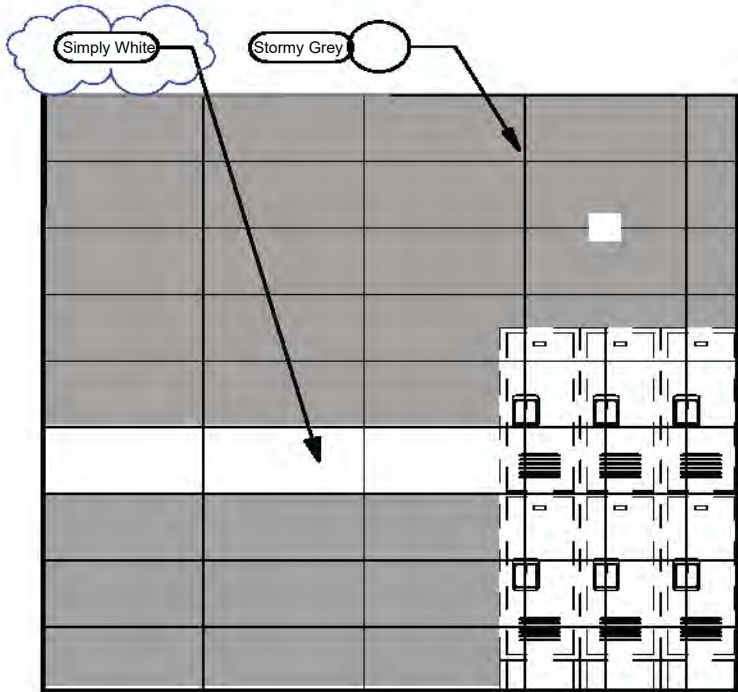
**Color:** Stormy Grey

**Finish:** Glossy

**Size:** 12" x 24" (nominal)

## ShopWalls!

12" x 24" Series Modern Lines

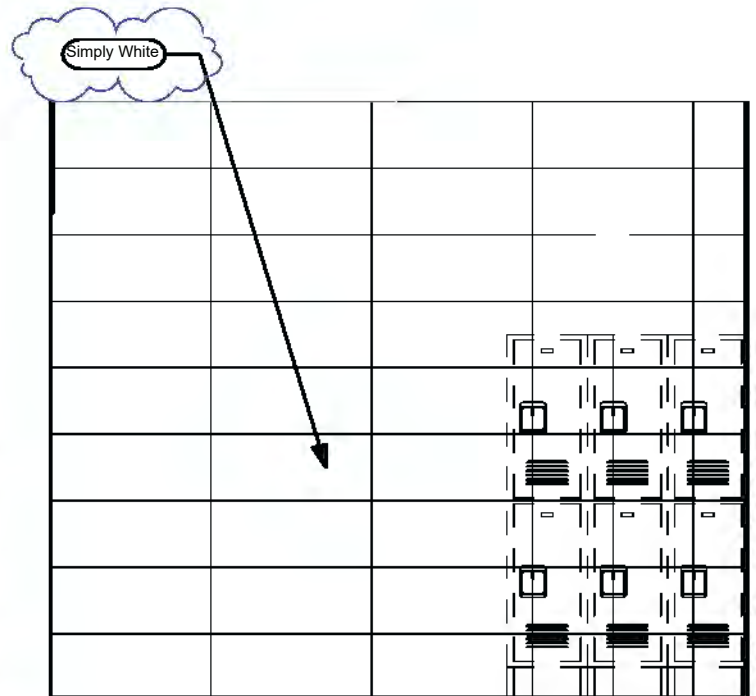
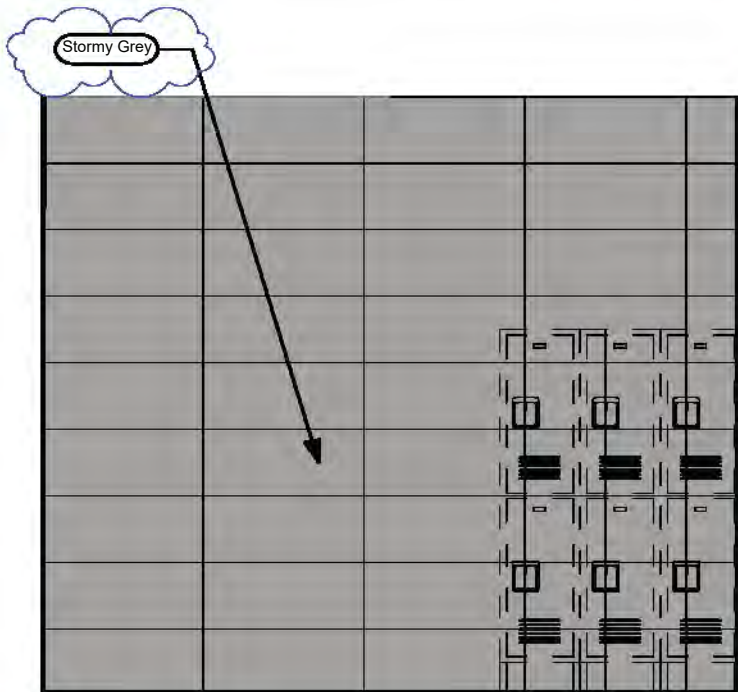


## Restroom & Tech Walls

**ShopWalls!** have rectified edges for precise tile alignment and tight grout joints.

Both colors are the exact size and are designed as a system to support your wet wall, locker room wall environment needs.

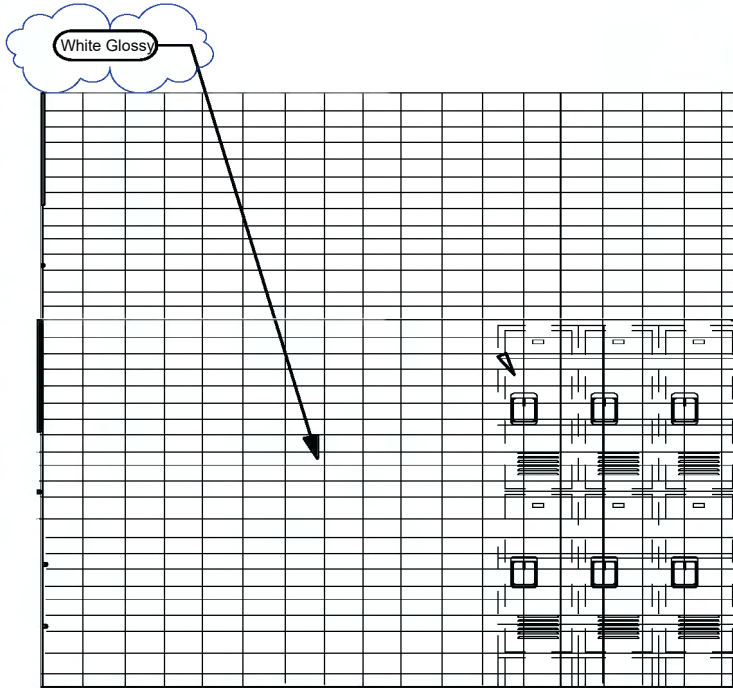
Affordable, available and the right choice for your automotive project.





## ShopWalls!

03" x 06" Subway Series



## Restroom & Tech Walls

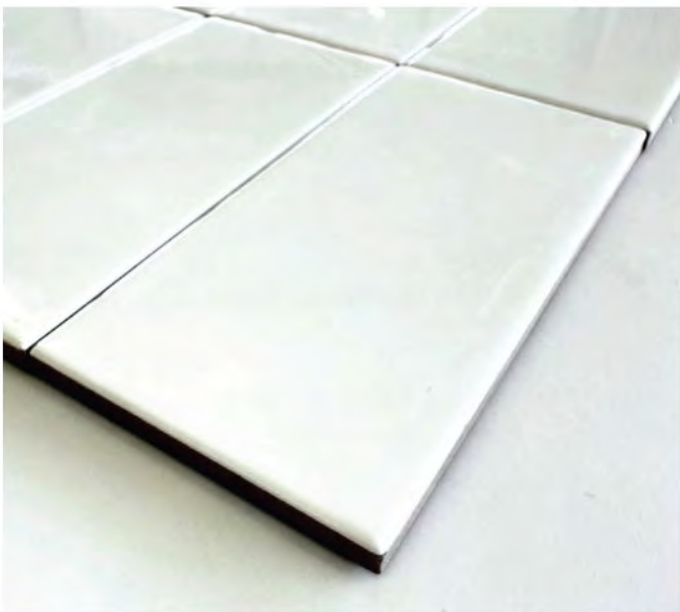
**ShopWalls!** provides automotive retail & service environments an affordable and attractive wall tile material designed for these specific environments.

This subway series format (03" x 06") tile creates an attractive environment for your service techs. Soft profile edge enhances the design profile of this series.

Pricing is affordable and these materials can ship with other AutoStone materials to reduce freight costs, fossil fuel use and reduces carbon footprint through consolidated supply and shipping.

Affordable, available, and designed for your tech walls! All materials ship together to reduce repetitive fossil fuel use.

No supply chain challenges or delivery delays.



## Subway Tile for Restroom & Tech Walls

**Color:** White  
**Finish:** Glossy  
**Size:** 03" x 06" (nominal)



## Service & Tech Restroom Areas Wall Tile

**Series:** ShopWall!  
**Color:** Granita Grey  
**Finish:** Satin  
**Size:** 8" X 8" U.S. Nominal Dimensions .



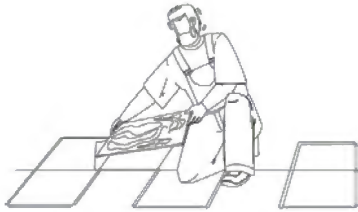
## Service & Tech Restroom Areas Wall Tile

**Series:** ShopWall!  
**Color:** Anthracite Grey  
**Finish:** Satin  
**Size:** 8" X 8" U.S. Nominal Dimensions .

# The AutoStoneUSA Honda Team

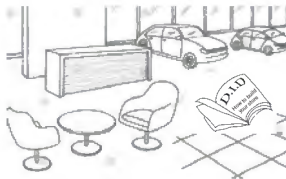


**General and immediate online help.  
You can find most information including quotes  
on our Honda Brand Webpage**



**If you are a flooring  
contractor and  
need pricing**

**Honda Sales Team**  
**[honda@autostoneusa.com](mailto:honda@autostoneusa.com)**  
**<https://autostoneusa.com/honda/>**  
**214-393-4875 phone**



**If you are the brand,  
brand architect, or  
brand CM**

**Lezlie Ferrell, Director of Sales**  
**[lezlie@autostoneusa.com](mailto:lezlie@autostoneusa.com)**  
**214-393-4861 direct dial**



**If you are a car  
dealer**

**Barry Wells, President**  
**[barry@autostoneusa.com](mailto:barry@autostoneusa.com)**  
**214-393-4862 direct dial**



**If you are the  
GC  
builder/contractor**

**Rachel Metcalf, Architectural Liaison**  
**[rachel@autostoneusa.com](mailto:rachel@autostoneusa.com)**  
**214-387-19551 direct dial**



**If you are the  
AOR  
local architect**

**Lezlie Ferrell, Director of Sales**  
**[lezlie@autostoneusa.com](mailto:lezlie@autostoneusa.com)**  
**214-393-4861 direct dial**