

autostone usa

Audi

ASC 3.0 Tile Guide

2025.5 Edition



Audi Architectural Terminal Program

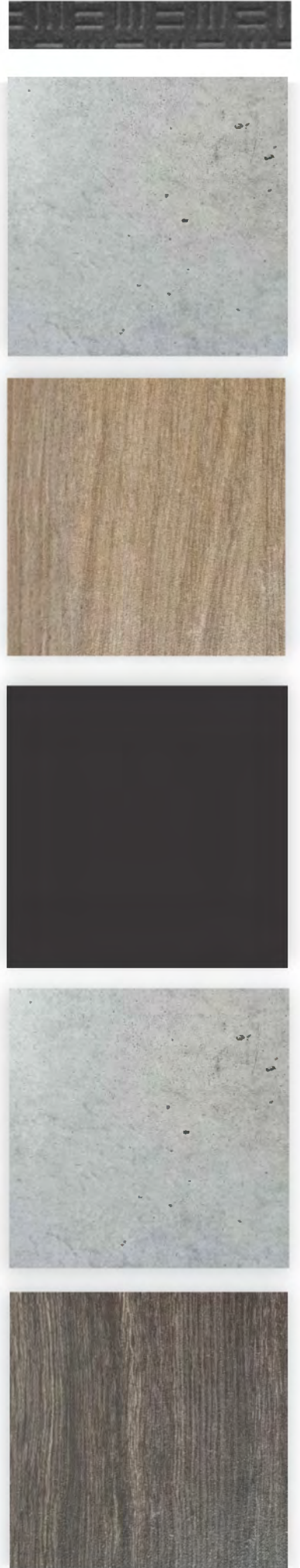
AutoStoneUSA.com/Audi



MADE IN AMERICA

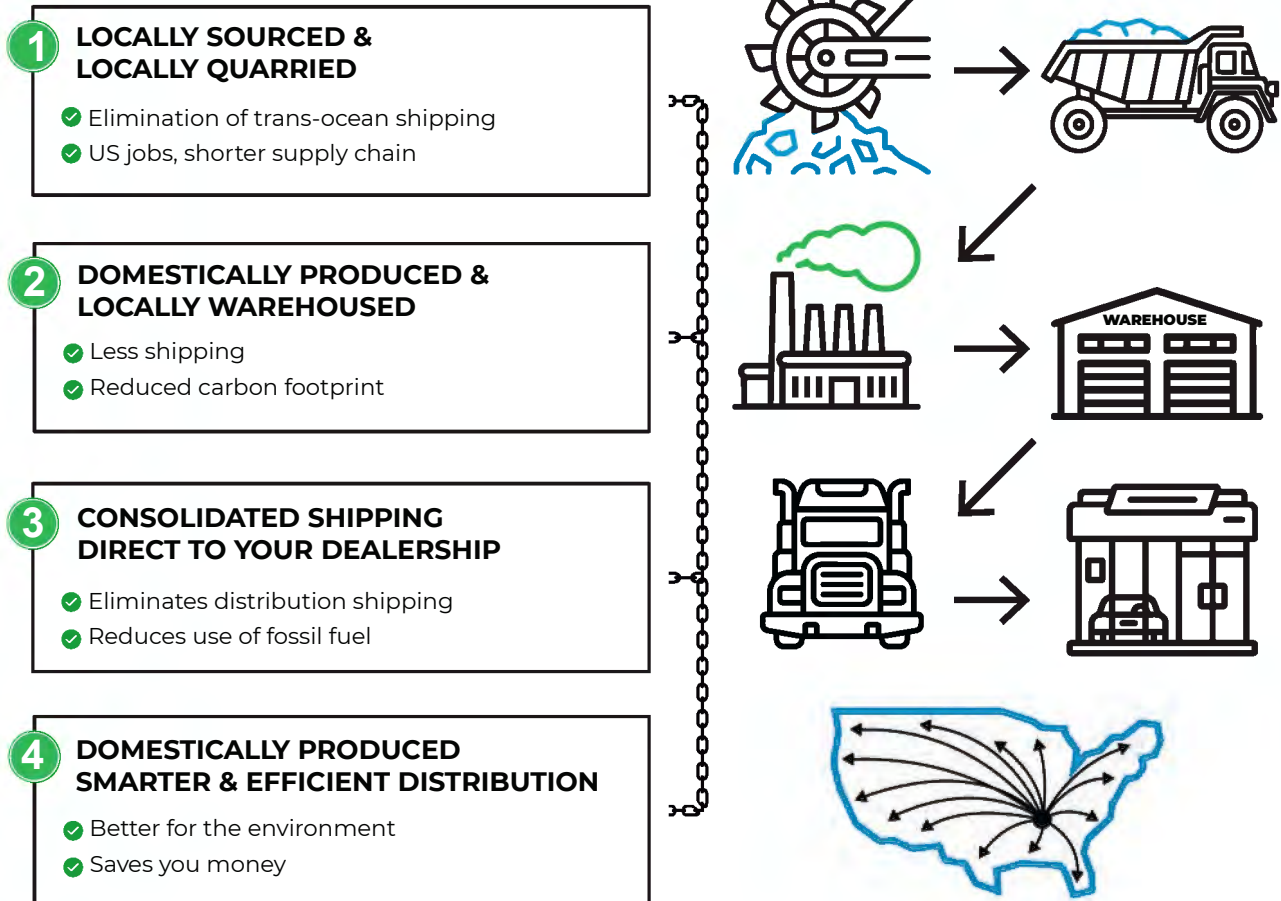
AutoStoneUSA.com

© 2025 AutoStoneUSA, All Rights Reserved.



Q2KD

QUARRY TO KILN DISTRIBUTION MODEL





MADE IN USA

**Code:** F-4**Description:** Showroom area. Vehicle display.
Customer facing areas.**Series:** Concrete Path**Color:** Smoke Grey**Size:** 36" x 36" x 9 mm (thickness)**Edge Profile:** Rectified**Finish:** Natural | Matte**ANSI A326.3:** 4.1.2 (IW) Interior Wet**Declared Use:** Interior Wet Environments**DCOF rating:** > .42 DCOF Wet (per section 9.1)**Grout Manufacturer:** Laticrete (or equal)

Permacolor Select (or equal)

Color: 78 Serling Silver (or matching color)**Code:** F-15**Description:** Stage Area**Series:** Serendipity**Color:** Destiny Black**Size:** 24" x 24" x 9 mm (thickness)**Edge Profile:** Rectified**Finish:** Natural | Matte**ANSI A326.3:** 4.1.2 (IW) Interior Wet**Declared Use:** Interior Wet Environments**DCOF rating:** > .42 DCOF Wet (per section 9.1)**Grout Manufacturer:** Laticrete (or equal)

Permacolor Select (or equal)

Color: 22 Midnight Black (or matching color)



MADE IN USA

**Code:** F-14**Description:** PSC Lounge Tile**Series:** WoodPlank**Color:** Magnolia Oak**Size:** 08" x 48" x 9 mm (thickness)**Edge Profile:** Rectified**Finish:** Natural | Matte**ANSI A326.3:** 4.1.2 (IW) Interior Wet**Declared Use:** Interior Wet Environments**DCOF rating:** > .42 DCOF Wet (per section 9.1)**Grout Manufacturer:** Laticrete (or equal)

Permacolor Select (or equal)

Color: 52 Toasted Almond (or matching color)**Code:** F-13**Description:** Handover Area**Series:** WoodPlank**Color:** Chocolate**Size:** 08" x 48" x 9 mm (thickness)**Edge Profile:** Rectified**Finish:** Natural | Matte**ANSI A326.3:** 4.1.2 (IW) Interior Wet**Declared Use:** Interior Wet Environments**DCOF rating:** > .42 DCOF Wet (per section 9.1)**Grout Manufacturer:** Laticrete (or equal)

Permacolor Select (or equal)

Color: 60 Dusty Grey (or matching color)

**Code:** W-3**Description:** PSC Lounge Tile**Series:** KRE-A-tive**Color:** Artic White**Size:** 04" x 16"**Edge Profile:** Soft Radius (wall installation)**Finish:** Glossy or Matte**ANSI A326.3:** N/A**Declared Use:** Walls**DCOF rating:** N/A

MADE IN USA

Grout Manufacturer: Laticrete (or equal)

Permacolor Select (or equal)

Color: 44 Bright White (or matching color)**Code:** W-3**Description:** PSC Lounge Tile**Series:** REL-A-tiva-T**Color:** Artic White**Size:** 04" x 16"**Edge Profile:** Soft Radius (wall installation)**Finish:** Glossy or Matte**ANSI A326.3:** N/A**Declared Use:** Walls**DCOF rating:** N/A**Grout Manufacturer:** Laticrete (or equal)

Permacolor Select (or equal)

Color: 44 Bright White (or matching color)**Code:** W-3**Description:** PSC Lounge Tile**Series:** Waves**Color:** Artic White**Size:** 04" x 16"**Edge Profile:** Soft Radius (wall installation)**Finish:** Glossy or Matte**ANSI A326.3:** N/A**Declared Use:** Walls**DCOF rating:** N/A**Grout Manufacturer:** Laticrete (or equal)

Permacolor Select (or equal)

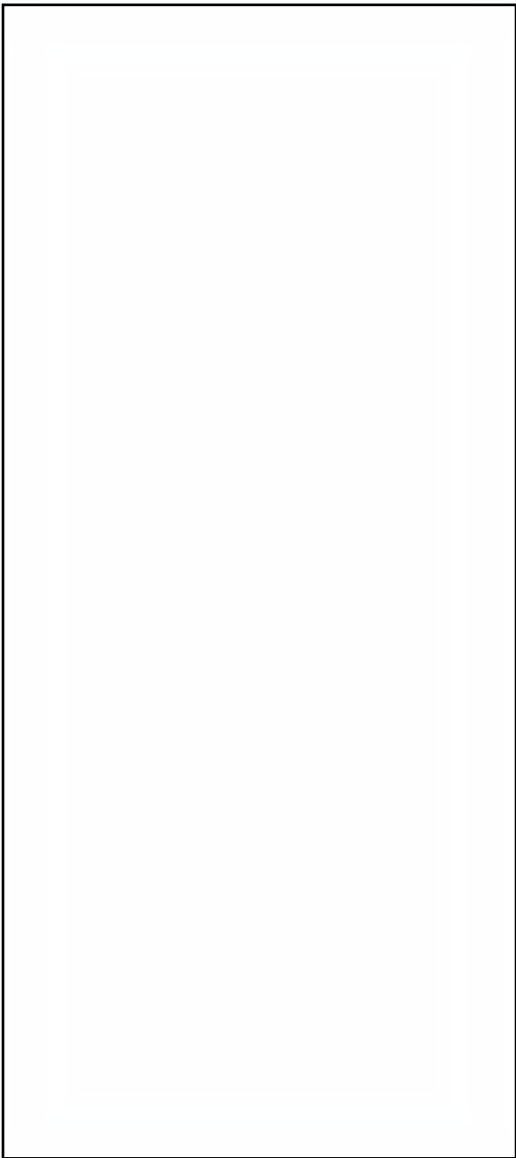
Color: 44 Bright White (or matching color)



submittal for approval



MADE IN USA



Code: **F-11**

Description: Non Guest Area Flooring (and walls).

Series: Modern Urban

Color: Brighton White

Size: 12" x 24" x 8 mm (thickness)

Edge Profile: Rectified

Finish: Natural | Matte

ANSI A326.3: 4.1.2 (IW) Interior Wet

Declared Use: Interior Wet Environments

DCOF rating: > .42 DCOF Wet (per section 9.1)

Grout Manufacturer: Laticrete (or equal)

Permacolor Select (or equal)

Color: 44 Bright White (or matching color)



awaiting final approval



STOCKED IN USA



Code: **W-3**

Description: **PSC Lounge Tile**

Series: **3D-Ripples**

Color: **White**

Size: **14" x 39" x 10 mm**

Edge Profile: **Rectified (wall installation)**

Finish: **Matte**

ANSI A326.3: **N/A**

Declared Use: **Walls**

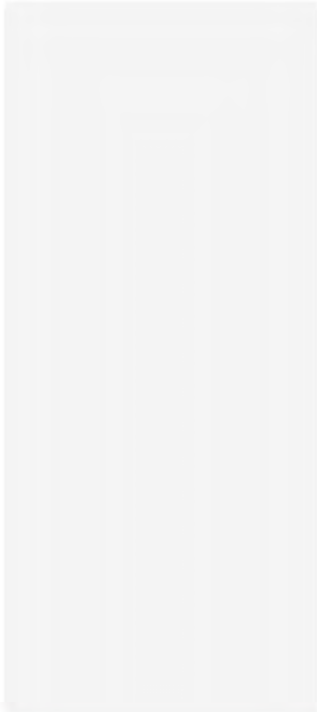
DCOF rating: **N/A**

Grout Manufacturer: **Laticrete (or equal)**

Permacolor Select (or equal)

Color: **44 Bright White (or matching color)**





Code: W-6

Description: Bathroom wall tile, non-customer areas.

Series: Modern Spaces

Color: Just White

Size: 12" x 24" x 9 mm thick

Edge Profile: Rectified

Finish: Matte

ANSI A326.3: N/A

Declared Use: Walls

DCOF rating: N/A

Grout Manufacturer: Laticrete (or equal)

Permacolor Select (or equal)

Color: 44 Bright White (or matching color)



Code: W-6 Alt

Description: Bathroom wall tile, non-customer areas.

Series: Modern Spaces

Color: Stormy Grey

Size: 12" x 24" x 9 mm thick

Edge Profile: Rectified

Finish: Matte

ANSI A326.3: N/A

Declared Use: Walls

DCOF rating: N/A

Grout Manufacturer: Laticrete (or equal)

Permacolor Select (or equal)

Color: 78 Sterling Silver (or matching color)





Series: DriveSeries08USA
Color: Alloy Grey
Finish: Super.Grip3L.Brightfinish
Size: 8" x 8"
Surface Traction Conforms to:
 ANSI A326.3 Use Category: 4.1.3
 Interior Wet Plus (IW+). 4.1.4
 Exterior Wet (EW).
 4.1.5 Oils/Grease (O/G).

brightfinish
 ultra-cleantable technology

DriveSeries8USA

advanced surface technology

Below: actual color varies, example is only representative



Grout: Laticrete Permacolor Select 78 SterlingSilver
Thinset: LHT Plus



MADE IN USA



Series: DriveSeries08USA
Color: Smoke Grey
Finish: Super.Grip3L.Brightfinish
Size: 8" x 8"
Surface Traction Conforms to:
 ANSI A326.3 Use Category: 4.1.3
 Interior Wet Plus (IW+). 4.1.4
 Exterior Wet (EW).
 4.1.5 Oils/Grease (O/G).

brightfinish
 ultra-cleantable technology

Below: actual color varies, example is only representative



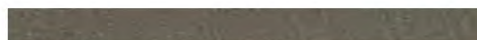
Grout: Laticrete Permacolor Select 42 Platinum
Thinset: LHT Plus



Series: DriveSeries08USA
Color: Genesis-Carbon Black
Finish: Super.Grip3L.Brightfinish
Size: 8" x 8"
Surface Traction Conforms to:
 ANSI A326.3 Use Category: 4.1.3
 Interior Wet Plus (IW+). 4.1.4
 Exterior Wet (EW).
 4.1.5 Oils/Grease (O/G).

brightfinish
 ultra-cleantable technology

Below: actual color varies, example is only representative



Grout: Laticrete Permacolor Select 60 Dusty Grey
Thinset: LHT Plus

Advantages

1. Advanced surface technology to better manage STF (slip, trip & fall) risk.
2. Surface has repeating lines elevated above the bed of the tile. Designed for greater foot, shoe-sole traction.
3. Includes Super.Grip. Advanced technology with "nano-textured" particles which increase surface traction.
4. Includes brightfinish. It will not permanently stain or darken when properly cleaned.

AutoStoneUSA Manufactured Declared Use

Evaluate for use in automotive workshop and service drive environments.

4.1.4 Exterior, Wet (EW) - level outdoor spaces walkways, sidewalks, where such floors may be walked upon when wet (excluding ice or snow) if level, clean, maintained and free of standing water or other contaminants.

4.1.5 Oils/Greases (O/G) - level areas regularly exposed to automotive fluids, etc., so long as such floors are level, regularly cleaned, maintained and free of standing water and contaminant build-up.

Declared Product Use & DCOF Requirement

Meets and exceeds .55 DCOF rating, appropriate for this environment of use: ANSI A326.3
 4.1.3 Interior Wet Plus (IW+).
 ANSI A326.3 4.1.4 Exterior Wet (EW).
 ANSI A326.3 4.1.5 Oils/Grease (O/G).



Series: eShop08USA

Color: Alloy Grey

Finish: Super.Grip.Brightfinish

Size: 8" x 8"

Surface Traction Conforms to:

ANSI A326.3 Use Category: 4.1.3

Interior Wet Plus (IW+). 4.1.4

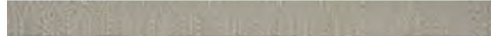
Exterior Wet (EW).

4.1.5 Oils/Grease (O/G).

brightfinish
ultra-cleanable technology

eShop8usa
better technology, better results

Below: actual color varies, example is only representative

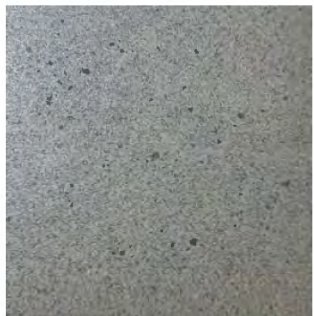


Grout: Laticrete Permacolor Select 78 SterlingSilver

Thinset: LHT Plus



MADE IN USA



Series: eShop08USA

Color: Smoke Grey

Finish: Super.Grip.Brightfinish

Size: 8" x 8"

Surface Traction Conforms to:

ANSI A326.3 Use Category: 4.1.3

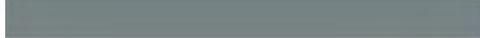
Interior Wet Plus (IW+). 4.1.4

Exterior Wet (EW).

4.1.5 Oils/Grease (O/G).

brightfinish
ultra-cleanable technology

Below: actual color varies, example is only representative



Grout: Laticrete Permacolor Select 42 Platinum

Thinset: LHT Plus



Series: eShop08USA

Color: Genesis-Carbon Black

Finish: Super.Grip.Brightfinish

Size: 8" x 8"

Surface Traction Conforms to:

ANSI A326.3 Use Category: 4.1.3

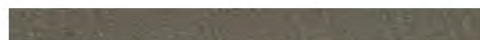
Interior Wet Plus (IW+). 4.1.4

Exterior Wet (EW).

4.1.5 Oils/Grease (O/G).

brightfinish
ultra-cleanable technology

Below: actual color varies, example is only representative



Grout: Laticrete Permacolor Select 60 Dusty Grey

Thinset: LHT Plus

Advantages

1. Advanced surface technology to better manage STF (slip, trip & fall) risk.
2. Surface has flat textured surface with enhanced surface traction. Designed for greater foot, shoe-sole traction.
3. Includes Super.Grip. Advanced technology with "nano-textured" particles which increase surface traction.
4. Includes brightfinish. It will not permanently stain or darken when properly cleaned.

AutoStoneUSA Manufactured Declared Use

Evaluate for use in automotive workshop and service drive environments.

4.1.4 Exterior, Wet (EW) - level outdoor spaces walkways, sidewalks, where such floors may be walked upon when wet (excluding ice or snow) if level, clean, maintained and free of standing water or other contaminants.

4.1.5 Oils/Greases (O/G) - level areas regularly exposed to automotive fluids, etc., so long as such floors are level, regularly cleaned, maintained and free of standing water and contaminant build-up.

Declared Product Use & DCOF Requirement

Meets and exceeds .55 DCOF rating, appropriate for this environment of use: ANSI A326.3

4.1.3 Interior Wet Plus (IW+).

ANSI A326.3 4.1.4 Exterior Wet (EW).

ANSI A326.3 4.1.5 Oils/Grease (O/G).



eShop8usa

better technology, better results

Series: eShop08USA

Color: Alloy Grey

Finish: Super.Grip.Brightfinish

Size: 8" x 8"

Surface Traction Conforms to:

ANSI A326.3 Use Category: 4.1.3

Interior Wet Plus (IW+). 4.1.4

Exterior Wet (EW).

4.1.5 Oils/Grease (O/G).



brightfinish
ultra-cleanable technology



DriveSeries8USA

advanced surface technology

Series: DriveSeries08USA

Color: Alloy Grey

Finish: Super.Grip3L.Brightfinish

Size: 8" x 8"

Surface Traction Conforms to:

ANSI A326.3 Use Category: 4.1.3

Interior Wet Plus (IW+). 4.1.4

Exterior Wet (EW).

4.1.5 Oils/Grease (O/G).



brightfinish
ultra-cleanable technology



Series: eShop08USA

Color: Smoke Grey

Finish: Super.Grip.Brightfinish

Size: 8" x 8"

Surface Traction Conforms to:

ANSI A326.3 Use category: 4.1.3

Interior Wet Plus (IW+). 4.1.4

Exterior Wet (EW).

4.1.5 Oils/Grease (O/G).



brightfinish
ultra-cleanable technology



Series: DriveSeries08USA

Color: Smoke Grey

Finish: Super.Grip3L.Brightfinish

Size: 8" x 8"

Surface Traction Conforms to:

ANSI A326.3 Use Category: 4.1.3

Interior Wet Plus (IW+). 4.1.4

Exterior Wet (EW).

4.1.5 Oils/Grease (O/G).



brightfinish
ultra-cleanable technology



Series: eShop08USA

Color: Genesis-Carbon Black

Finish: Super.Grip.Brightfinish

Size: 8" x 8"

Surface Traction Conforms to:

ANSI A326.3 Use Category: 4.1.3

Interior Wet Plus (IW+). 4.1.4

Exterior Wet (EW).

4.1.5 Oils/Grease (O/G).



brightfinish
ultra-cleanable technology



Series: DriveSeries08USA

Color: Genesis-Carbon Black

Finish: Super.Grip3L.Brightfinish

Size: 8" x 8"

Surface Traction Conforms to:

ANSI A326.3 Use Category: 4.1.3

Interior Wet Plus (IW+). 4.1.4

Exterior Wet (EW).

4.1.5 Oils/Grease (O/G).

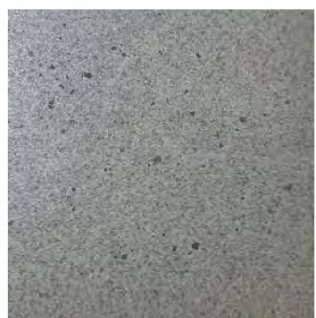


brightfinish
ultra-cleanable technology



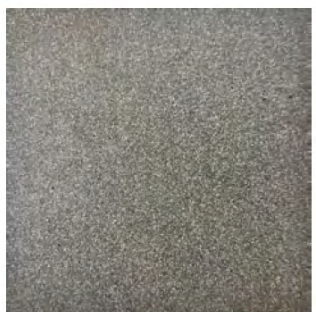
Series: ClinkerShopUSA
Color: Alloy Grey
Finish: Super.Grip.Brightfinish
Size: 4" x 8" x 1/2"
Surface Traction Conforms to:
 ANSI A326.3 Use Category: 4.1.3
 Interior Wet Plus (IW+). 4.1.4
 Exterior Wet (EW).
 4.1.5 Oils/Grease (O/G).

brightfinish
 ultra-cleanable technology



Series: ClinkerShop8USA
Color: Smoke Grey
Finish: Super.Grip.Brightfinish
Size: 4" x 8" x 1/2"
Surface Traction Conforms to:
 ANSI A326.3 Use Category: 4.1.3
 Interior Wet Plus (IW+). 4.1.4
 Exterior Wet (EW).
 4.1.5 Oils/Grease (O/G).

brightfinish
 ultra-cleanable technology

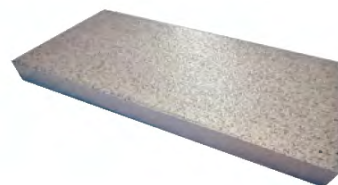


Series: ClinkerShopUSA
Color: Genesis-Carbon Black
Finish: Super.Grip.Brightfinish
Size: 4" x 8" x 1/2"
Surface Traction Conforms to:
 ANSI A326.3 Use Category: 4.1.3
 Interior Wet Plus (IW+). 4.1.4
 Exterior Wet (EW).
 4.1.5 Oils/Grease (O/G).

brightfinish
 ultra-cleanable technology

ClinkerShopUSA

Better technology, better performance, American made.

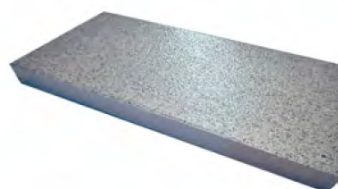


MADE IN USA

Below: actual color varies, example is only representative



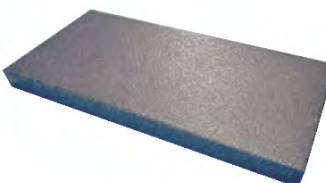
Grout: Laticrete Permacolor Select 78 SterlingSilver
Thinset: LHT Plus



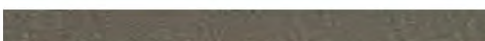
Below: actual color varies, example is only representative



Grout: Laticrete Permacolor Select 42 Platinum
Thinset: LHT Plus



Below: actual color varies, example is only representative



Grout: Laticrete Permacolor Select 60 Dusty Grey
Thinset: LHT Plus

Advantages

1. Advanced surface technology to better manage STF (slip, trip & fall) risk.
2. Surface has Super.Grip surface texture. These nano-granules provide an enhanced surface tension
3. Includes Brightfinish which aids dealers with their cleaning practices. This is a permanent sealant that retards permanent staining and keeps floors in a "like new" appearance.

Manufactured Declared Uses

Evaluate for use in automotive workshop and service drive environments

4.1.4 (Exterior, Wet) - level outdoor spaces walkways, sidewalks, where such floors may be walked upon when wet (excluding ice or snow) if level, clean, maintained and free of standing water or other contaminants.

4.1.5 (Oils/Greases) - level areas regularly exposed to automotive fluids, etc., so long as such floors are level, regularly cleaned, maintained and free of standing water and contaminant build-up. Consult with your architect to determine dealership practices. **Review ANSI A326.3 2021 standard.**

Declared Product Use & DCOF Requirement

Meets and exceeds 55 DCOF rating as required for ANSI A326.3 4.1.3 Exterior Wet.



Series: DriveSeries12USA
Color: Alloy Grey
Finish: Traction3L.Brightfinish

Size: 12" x 12"

Surface Traction Conforms to:

ANSI A326.3 Use Category: 4.1.3

Interior Wet Plus (IW+). 4.1.4

Exterior Wet (EW).

4.1.5 Oils/Grease (O/G).

DriveSeries12USA

advanced surface technology



MADE IN USA

Below: actual color varies, example is only representative

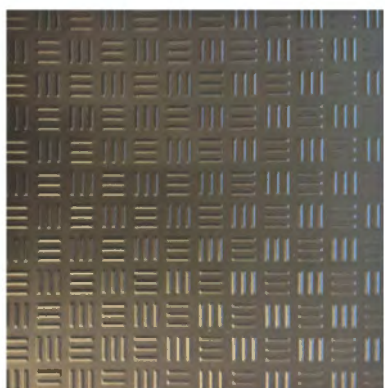


Grout: Laticrete Permacolor Select 89 Smoke Grey

Thinset: LHT Plus



brightfinish
 ultra-cleanable technology



Series: DriveSeries12USA
Color: Carbon Black
Finish: Traction3L.Brightfinish
Size: 12" x 12"

Surface Traction Conforms to:

ANSI A326.3 Use Category: 4.1.3

Interior Wet Plus (IW+). 4.1.4

Exterior Wet (EW).

4.1.5 Oils/Grease (O/G).

Below: actual color varies, example is only representative



Grout: Laticrete Permacolor Select 45 Raven

Thinset: LHT Plus



brightfinish
 ultra-cleanable technology

A permanent enhanced porcelain technology floor system. Elevated traction provides a better surface to manage STF (slip, trip, and fall) risk in your automotive service drive, workshop and tech locker room shower areas. See declared uses below. Should be cleaned with frequent maintenance to keep clean and free of contamination and debris when dealership is operating. Spot spills should be removed immediately and not left on surface. Floor cleaning should include use of de-greasing chemical, floor scrubber sweeper machine with wet vacuum to suck-up dirty water and debris as part of cleaning process.

Advantages

1. Advanced surface technology to better manage STF (slip, trip & fall) risk.
2. Surface has repeating lines elevated above the bed of the tile. Designed for greater foot, shoe-sole traction.
3. Will not permanently stain or darken when properly cleaned.

AutoStoneUSA Manufactured Declared Use

Evaluate for use in automotive workshop and service drive environments.

4.1.3 Interior, Wet Plus (IW+) - evaluate for interior use in automotive workshop and service drive environments with high speed doors and tech locker rooms.

4.1.4 Exterior, Wet (EW) level outdoor spaces walkways, sidewalks, where such floors may be walked upon when wet (excluding ice or snow) if level, clean, maintained and free of standing water or other contaminants.

4.1.5 Oils/Greases (O/G) level areas regularly exposed to automotive fluids, etc., so long as such floors are level, regularly cleaned, maintained and free of standing water and contaminant build-up.

Declared Product Use & DCOF Requirement

Meets and exceeds .55 DCOF (wet) rating, appropriate for this environment of use:

ANSI A326.3 4.1.3 Interior Wet Plus (IW+).

ANSI A326.3 4.1.4 Exterior Wet (EW).

ANSI A326.3 4.1.5 Oils/Grease (O/G).



Series: EnviroShop12USA
Color: Alloy Grey
Finish: Traction.Brightfinish
Size: 12" x 12"
Surface Traction Conforms to:
 ANSI A326.3 Use Category:
 4.1.3 Interior Wet Plus (IW+).



Series: EnviroShop12USA
Color: Smoke Grey
Finish: Traction.Brightfinish
Size: 12" x 12"
Surface Traction Conforms to:
 ANSI A326.3 Use Category:
 4.1.3 Interior Wet Plus (IW+).



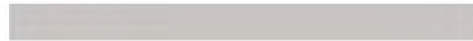
Series: EnviroShop12USA
Color: Carbon Black
Finish: Traction.Brightfinish
Size: 12" x 12"
Surface Traction Conforms to:
 ANSI A326.3 Use Category:
 4.1.3 Interior Wet Plus (IW+).



EnviroShop12usa

smarter, better workshops

Below: actual color varies, example is only representative

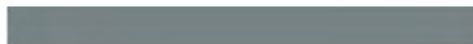


Grout: Laticrete Permacolor Select 89 Smoke Grey
Thinset: LHT Plus



MADE IN USA

Below: actual color varies, example is only representative



Grout: Laticrete Permacolor Select 42 Platinum
Thinset: LHT Plus

Below: actual color varies, example is only representative



Grout: Laticrete Permacolor Select 45 Raven
Thinset: LHT Plus

Advantages

1. Our original workshop floor with textured surface.
2. Surface texture is elevated above the surface bed for easier cleaning.
3. Will not permanently stain or darken when properly cleaned.
4. This product has:

slipresistant
 textured floor surfaces

AutoStoneUSA Manufactured Declared Use

4.1.3 Interior, Wet Plus (IW+) - evaluate for interior use in automotive workshop and service drive environments with high speed doors and tech locker rooms. Enviroshop12USA has a traction surface suitable for interior, wet plus applications, with good drainage. Floors walked on when wet should be level, clean, maintained and free of standing water or other contaminants. Should be cleaned with frequent maintenance to keep clean.

Declared Product Use & DCOF Requirement

Meets and exceeds .50 DCOF (wet) rating, appropriate for this environment of use:

ANSI A326.3 4.1.3 Interior Wet Plus (IW+).

EnviroShop12usa

smarter, better workshops

DriveSeries12USA

advanced surface technology



Series: EnviroShop12USA
Color: Alloy Grey
Finish: Traction.Brightfinish

Size: 12" x 12"

Surface Traction Conforms to:
ANSI A326.3 Use Category: 4.1.3
Interior Wet Plus (IW+).



brightfinish
ultra-cleanable technology



Series: DriveSeries12USA
Color: Alloy Grey
Finish: Traction3L.Brightfinish
Size: 12" x 12"

Surface Traction Conforms to:
ANSI A326.3 Use Category: 4.1.3
Interior Wet Plus (IW+). 4.1.4
Exterior Wet (EW).
4.1.5 Oils/Grease (O/G).



brightfinish
ultra-cleanable technology



Series: EnviroShop12USA
Color: Smoke Grey
Finish: Traction.Brightfinish
Size: 12" x 12"

Surface Traction Conforms to:
ANSI A326.3 Use Category: 4.1.3
Interior Wet Plus (IW+).



brightfinish
ultra-cleanable technology

DriveSeries12USA
Smoke Grey
Currently Not Available

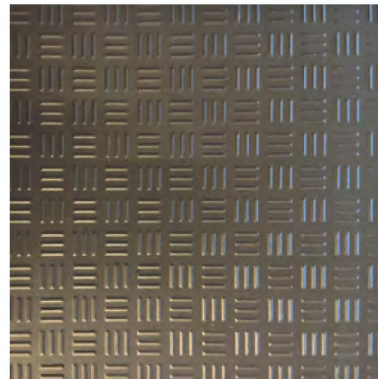


Series: EnviroShop12USA
Color: Carbon Black
Finish: Traction.Brightfinish
Size: 12" x 12"

Surface Traction Conforms to:
ANSI A326.3 Use Category: 4.1.3
Interior Wet Plus (IW+).



brightfinish
ultra-cleanable technology



Series: DriveSeries12USA
Color: Carbon Black
Finish: Traction3L.Brightfinish
Size: 12" x 12"

Surface Traction Conforms to:
ANSI A326.3 Use Category: 4.1.3
Interior Wet Plus (IW+). 4.1.4
Exterior Wet (EW).
4.1.5 Oils/Grease (O/G).



brightfinish
ultra-cleanable technology



Code: W-15

Description: Work shop walls

Series: ShopWalls!

Color: Granita Grey (light)

Size: 08" x 08"

Edge Profile: Soft Radius (wall installation)

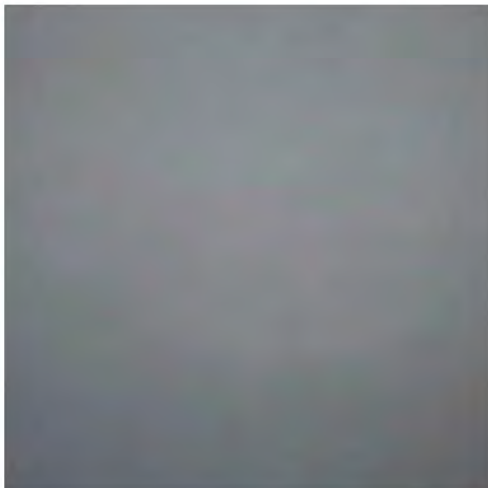
Finish: Matte

ANSI A326.3: N/A

Declared Use: Walls

DCOF rating: N/A

Grout Manufacturer: Laticrete (or equal)
Permacolor Select (or equal)
Color: 88 Silver Shadow (or matching color)



Code: W-15

Description: Work shop walls

Series: ShopWalls!

Color: Anthracite Grey (dark)

Size: 08" x 08"

Edge Profile: Soft Radius (wall installation)

Finish: Matte

ANSI A326.3: N/A

Declared Use: Walls

DCOF rating: N/A

Grout Manufacturer: Laticrete (or equal)
Permacolor Select (or equal)
Color: 42 Platinum (or matching color)



INDUSTRIAL ENVIRONMENT LVT LARGE (18" x 36") FORMAT FLOOR & WALL PANELS

RA3

Great for Parts, Storage Areas, Janitorial, Lunch & Break Rooms, Tech Locker Room Floors & Walls.

Wainscoting for Hallways, WorkShop Areas & All Back-Office Areas.

18" x 36" large format panels with rugged diamond plated surface texture to help reduce STF (slip, trip, and fall) risk.



SURFACE CAMOUFLAGE

"face Camouflage enhances the safety of your floor by reducing the negative visual daily contaminants generated during your workday."



SCRATCH RESISTANT SURFACE

Will not dent, scratch, or chip like metal, concrete, epoxy, tile, or other finishes.



CHEMICAL RESISTANT SURFACE

Resistant to water, gasoline, MEK, acetone, motor oil, isopropanol, acetic acid, ammonia, sodium chloride solution, and other chemicals.*

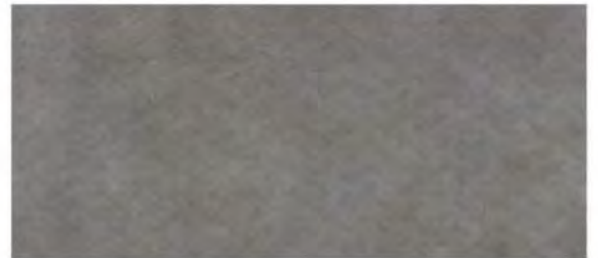


IMPACT GUARD SURFACE

Strong, rugged, and stands up to blunt force impact better than any other surface.



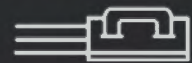
Grey Concrete



Deep Concrete

RA3

RA3 PANEL PRICE



Troweled Adhesive Method*

*Troweled adhesive will be added to your quote

Thickness: 3mm

Size: 18" x 36" Panel (4.5 SQFT Per Panel)



Features Included:

- Rated for climate-controlled environments (home garage)
- Surface Camouflage
- Scratch Resistant Surface
- Chemical Resistant Surface
- Impact Guard Surface
- Industrial Strength 30 mil Wear-Layer

RA IS RECOMMENDED FOR CLIMATE CONTROLLED ENVIRONMENTS WITH A ROOF, WALL AND DOORS FLOOD SAFE, WATER RESISTANT, + SOUND REDUCTION



CLIMATE-CONTROLLED ENVIRONMENTS

For environments with a temperature room range of 40° and 104-degrees.*



FLOOD SAFE & WATER RESISTANT

Panels are moisture-resistant and can be submerged for days and remain bonded.



LESS NOISE BETTER CONDITIONS

Reduces noise decibels (dB) and improves working conditions.

So easy to install that there is no need for expensive, highly skilled labor.

So fast that you can use immediately upon installation; no cure time required.

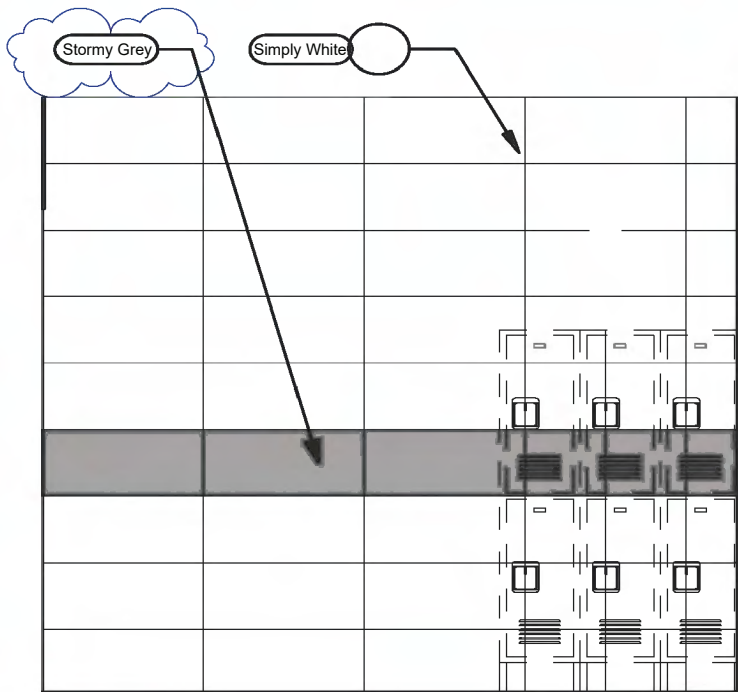
Panels are installed edge-to-edge, and wall-to-wall for a seamless, beautiful floor.

Commercial workshops install in 1-2 days (depending on size).



ShopWalls!

12" x 24" Series Modern Lines



Restroom & Tech Walls

ShopWalls! provides automotive retail & service environments an affordable and attractive wall tile material designed for these specific environments.

This larger format (12" x 24") tile minimizes grout lines while creating a modern and attractive environment for your service techs. Rectified edges for precise & tight grout joint alignment.

Benefits includes wall surfaces that are easy to clean so they are maintained in a "like-new" appearance.

Pricing is affordable and these materials can ship with other AutoStone materials to reduce freight costs.

Affordable, available, and designed for your tech walls! All materials ship together to reduce repetitive fossil fuel use.

No supply chain challenges or delivery delays.



Restroom & Tech Walls

Color: Simply White

Finish: Satin

Size: 12" x 24" (nominal)



Restroom & Tech Walls

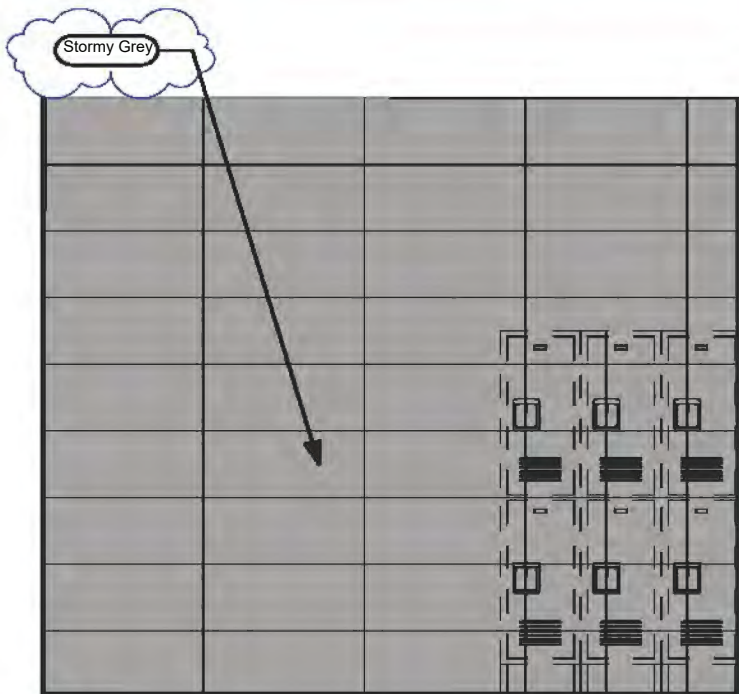
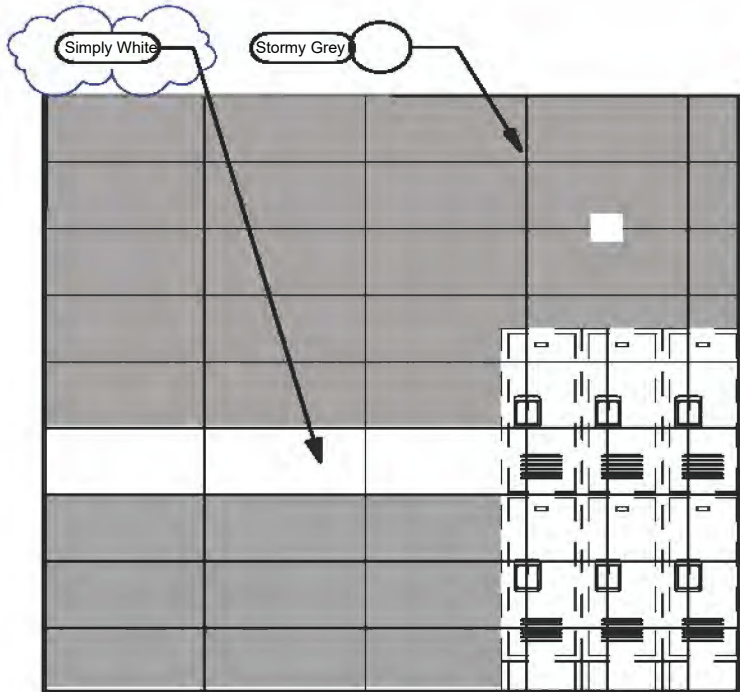
Color: Stormy Grey

Finish: Glossy

Size: 12" x 24" (nominal)

ShopWalls!

12" x 24" Series Modern Lines

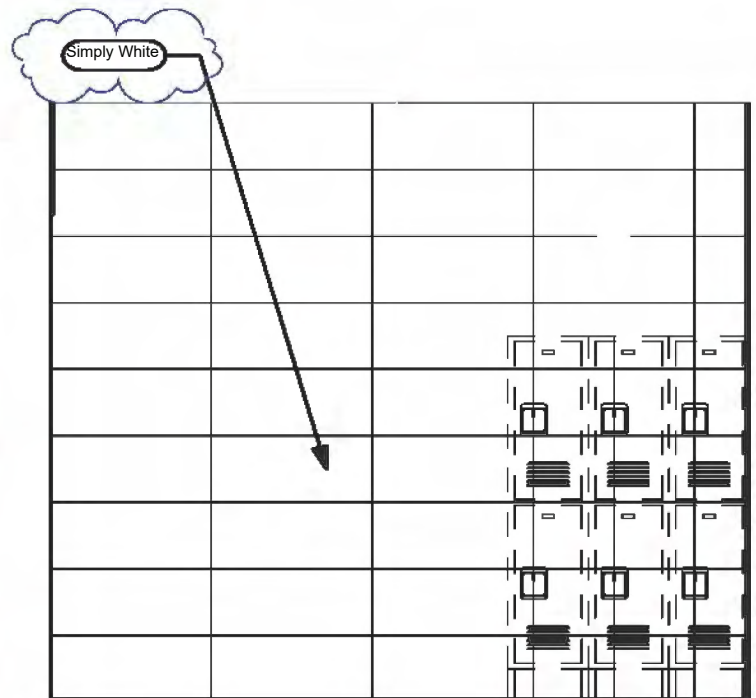


Restroom & Tech Walls

ShopWalls! have rectified edges for precise tile alignment and tight grout joints.

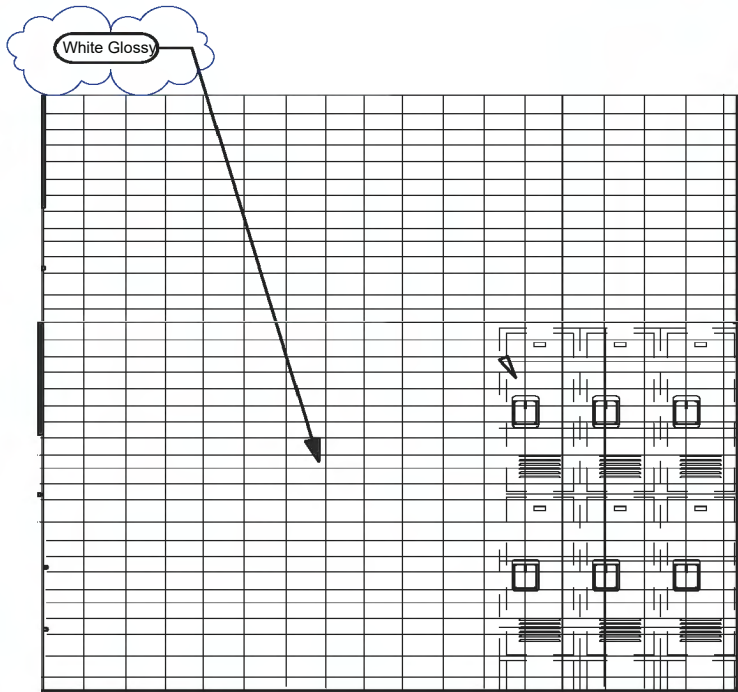
Both colors are the exact size and are designed as a system to support your wet wall, locker room wall environment needs.

Affordable, available and the right choice for your automotive project.



ShopWalls!

03" x 06" Subway Series



Restroom & Tech Walls

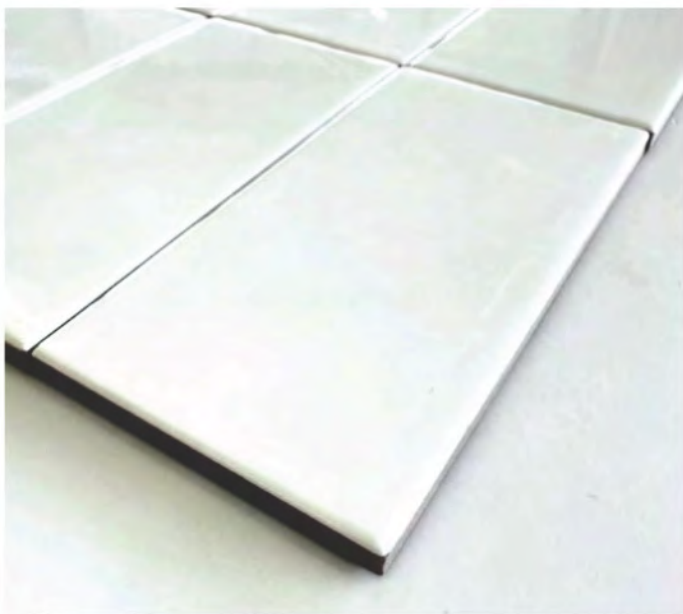
ShopWalls! provides automotive retail & service environments an affordable and attractive wall tile material designed for these specific environments.

This subway series format (03" x 06") tile creates an attractive environment for your service techs. Soft profile edge enhances the design profile of this series.

Pricing is affordable and these materials can ship with other AutoStone materials to reduce freight costs, fossil fuel use and reduces carbon footprint through consolidated supply and shipping.

Affordable, available, and designed for your tech walls! All materials ship together to reduce repetitive fossil fuel use.

No supply chain challenges or delivery delays.



Subway Tile for Restroom & Tech Walls

Color: White
Finish: Glossy
Size: 03" x 06" (nominal)



Service & Tech Restroom Areas Wall Tile

Series: ShopWall!
Color: Granita Grey
Finish: Satin
Size: 8" X 8" U.S. Nominal Dimensions .



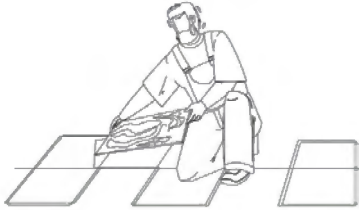
Service & Tech Restroom Areas Wall Tile

Series: ShopWall!
Color: Anthracite Grey
Finish: Satin
Size: 8" X 8" U.S. Nominal Dimensions .

The AutoStoneUSA Audi Team

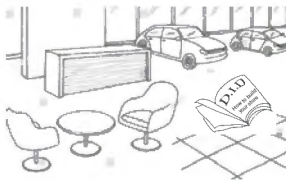


General and immediate online help.
You can find most information including quotes
on our Audi Brand Webpage



If you are a flooring
contractor and
need pricing

Audi Sales Team
audi@autostoneusa.com
<https://autostoneusa.com/audi/>
214-393-4875 phone



If you are the brand,
brand architect, or
brand CM

Lezlie Ferrell, Director of Sales
lezlie@autostoneusa.com
214-393-4861 direct dial



If you are a car
dealer

Barry Wells, President
barry@autostoneusa.com
214-393-4862 direct dial



If you are the
GC
builder/contractor

Rachel Metcalf, Architectural Liaison
rachel@autostoneusa.com
214-387-19551 direct dial



If you are the
AOR
local architect

Lezlie Ferrell, Director of Sales
lezlie@autostoneusa.com
214-393-4861 direct dial