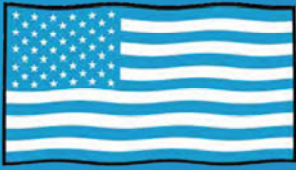


autostone usa



Kia 2.0 America Tile Guidebook

Kia Gallery Program
AutoStoneUSA.com/Kia

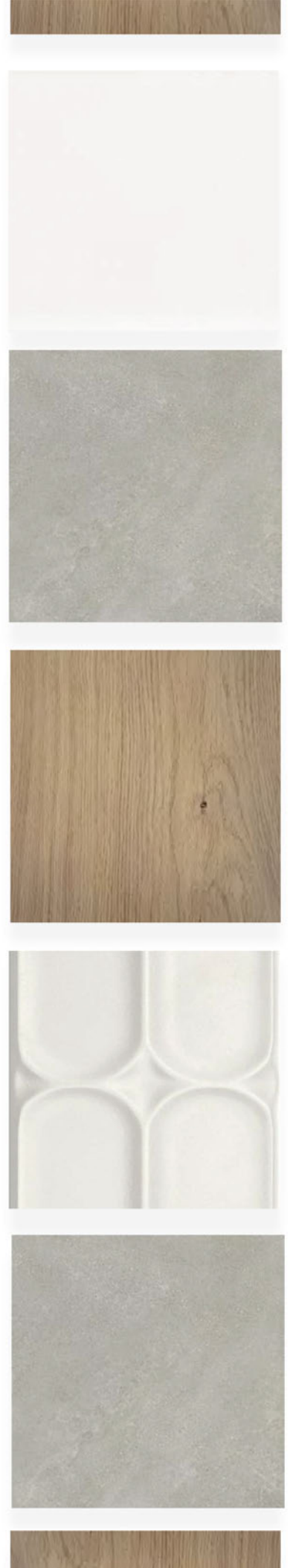


MADE IN AMERICA



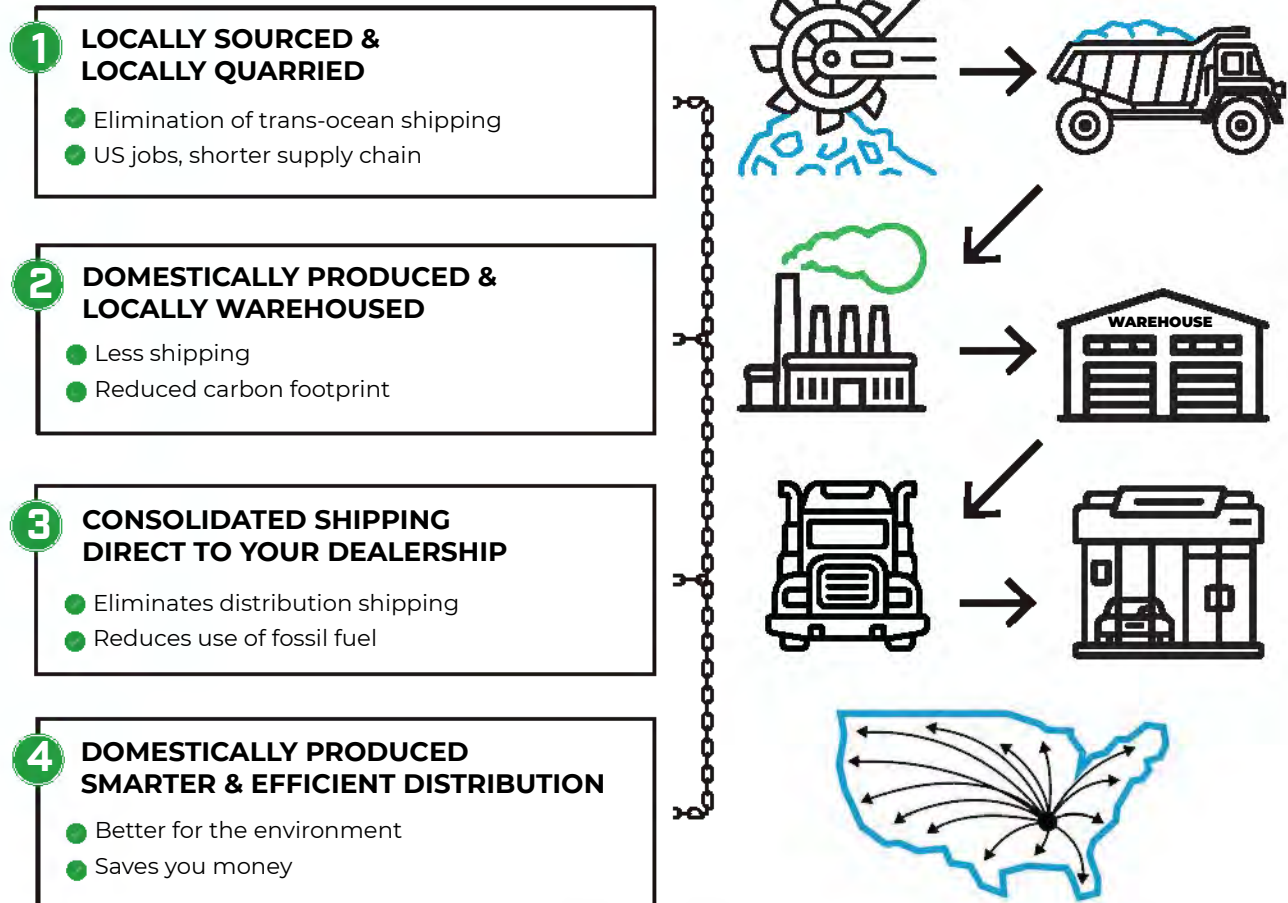
AutoStoneUSA.com

© 2025 AutoStone Floor Systems, All Rights Reserved.



Q2KD

QUARRY TO KILN DISTRIBUTION MODEL





T-1

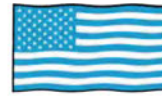
Series: Concrete

Color: Smoke

Finish: Natural | Honed

Code: AS.11036373232NH

Size: 32" x 32" (U.S. Nominal Dimensions)



USA
MANUFACTURED

Important installation note for tile contractors: AutoStoneUSA, TCNA, NTCA, ANSI, and Kia 2.0 brand standards require tile installers open multiple boxes of tile prior to installing and "shuffle" tiles to assure a randomized tile pattern when installing.



T-2

Series: Amberwood Plank

Color: Maple Harvest

Finish: Natural

Size: 8" x 48" (U.S. Nominal Dimensions)



USA
MANUFACTURED



T-3

Series: Station America - A

Color: White

Finish: Matte

Code: ASUSA.25226E.PBA

Size: 4" x 16" (U.S. Nominal Dimensions)



USA
STOCKED



T-4

Series: Station America - B

Color: White

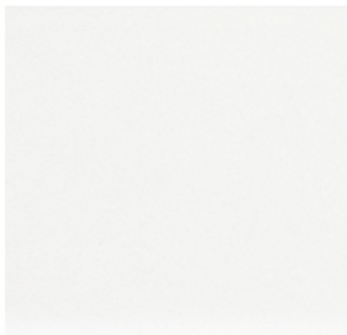
Finish: Matte

Code: ASUSA.25237E.PBA

Size: 4" x 16" (U.S. Nominal Dimensions)



USA
STOCKED



T-3

Series: Station America - A

Color: White

Finish: Matte

Code: ASUSA.25226E.PBA

Size: 4" x 16" (U.S. Nominal Dimensions)

Note: this is a NEW approved Kia 2.0 T-3 & T-4 tile option by AutoStoneUSA.

This is approved for your Kia project and is to be installed in the vertical direction as shown below.

This is a GREAT and modern look that Kia dealers LOVE. Ask your AutoStone representative for more information.



T-4

Series: Station America - B

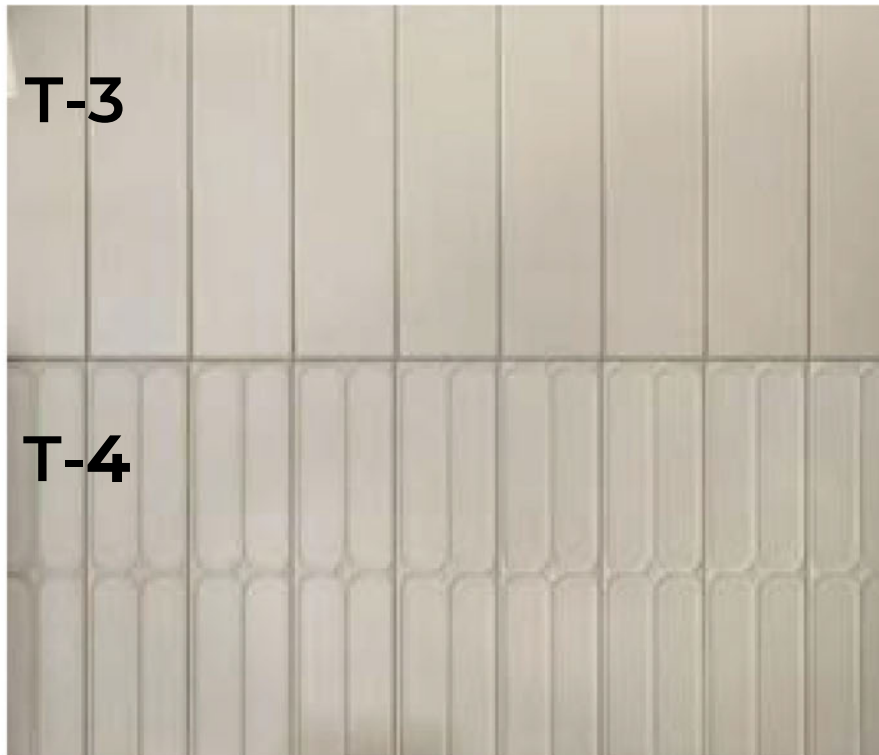
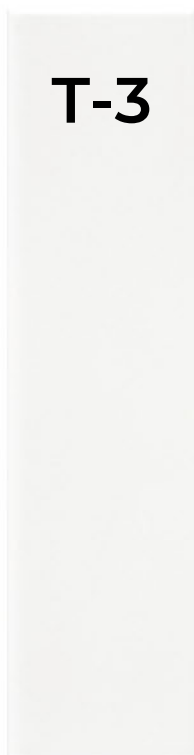
Color: White

Finish: Matte

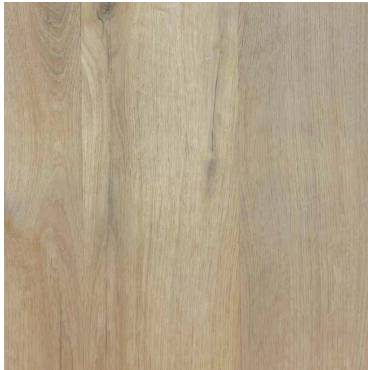
Code: ASUSA.25237E.PBA

Size: 4" x 16" (U.S. Nominal Dimensions)

NOW - Made in USA!



See LVT Tile Guide for more details!



LVT-1 (Glue Down)

Series: LVT WoodPlank

Color: Birch Maple

Finish: Natural

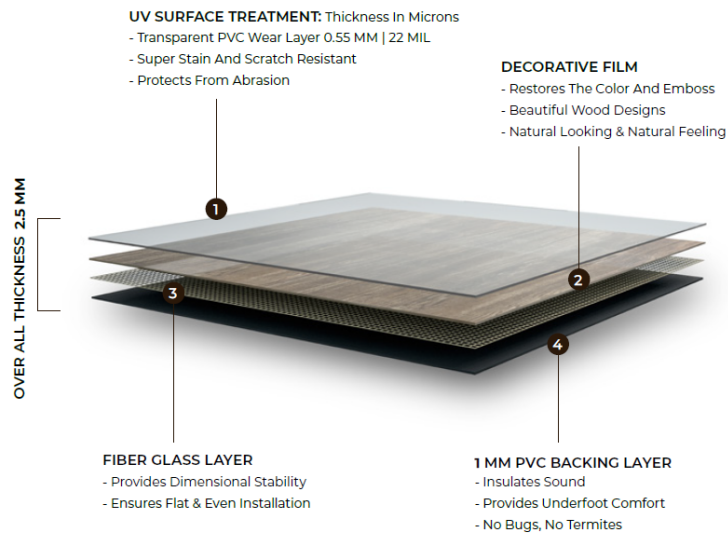
Size: 7.25" x 48" x 2.5 mm (thick) (U.S. Nominal Dimensions)

Wear Layer: 22 MIL | 0.55 mm



**USA
STOCKED**

LAYER DIAGRAM



APPLICATIONS



Corporate
Offices



Commercial
Establishments



Retail
Outlets



Hotels &
Hospitality

FEATURES & BENEFITS



Superior Scratch
& Stain Resistant



Zero
Maintenance



Easy
Clean



Natural Looking
Design



Heavy
Foot Traffic



Easy
Installation

SIZE: 7.25" x 48"

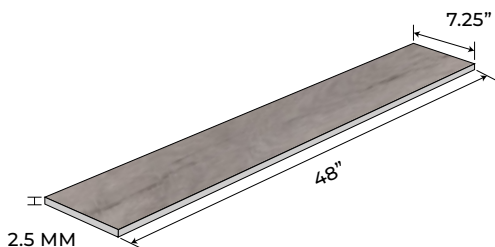
THICKNESS: 2.5 MM

WEAR LAYER: 22 MIL | 0.55 MM

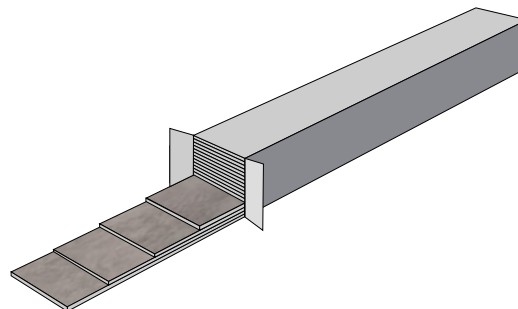
PIECES: 16 PER CARTON

COVERAGE: 38.66 SQ FT / 3.59 M² / CARTON

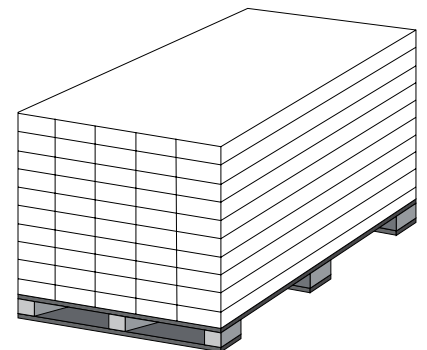
INSTALLATION: DRY BACK LVT



7.25" x 48" x 2.5 mm
184.15.00 mm x 1219.2 mm x 2.5 mm
22 MIL / 0.55 mm



16 PCS / CARTON
38.66 SQ.FT / CARTON
3.59 SQ.M / CARTON

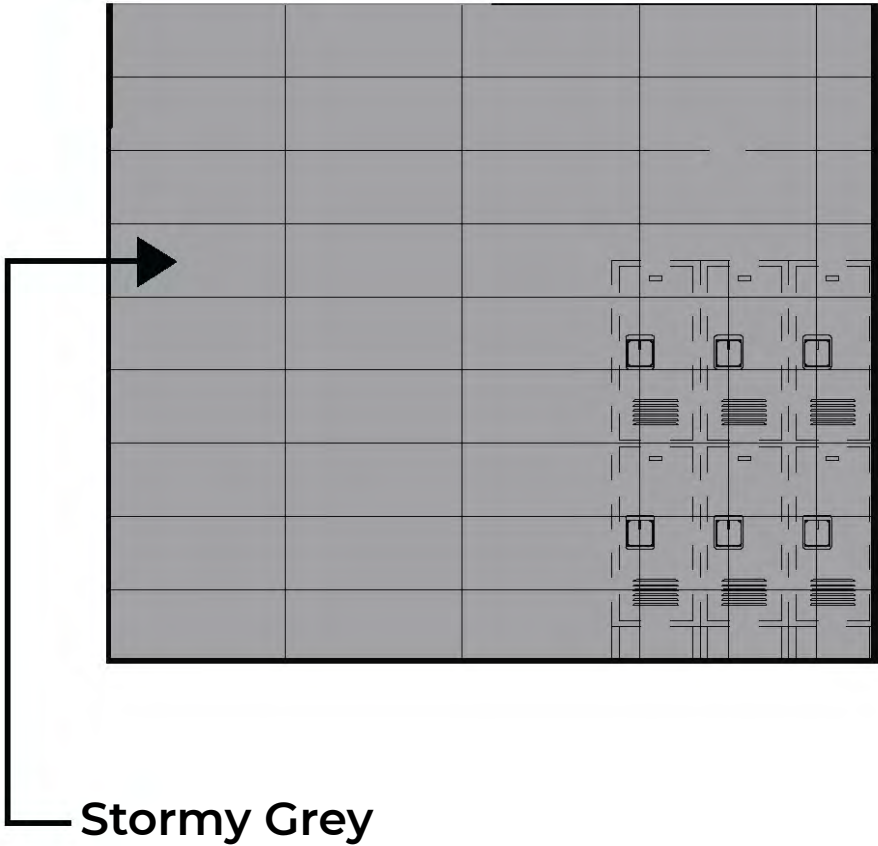


50 CARTONS / PALLET



T-5 Tech Locker Walls

Series: *ShopWalls!*
Color: Stormy Grey
Finish: Glossy
Surface: Medium Traction
Size: 12" x 24" (U.S. Nominal Dimensions)





Series: DriveSeries08USA
Color: Alloy Grey
Finish: Super.Grip3L.Brightfinish
Size: 8" x 8"
Surface Traction Conforms to:
 ANSI A326.3 Use Category: 4.1.3
 Interior Wet Plus (IW+). 4.1.4
 Exterior Wet (EW).
 4.1.5 Oils/Grease (O/G).



DriveSeries8USA

advanced surface technology

Below: actual color varies, example is only representative



Grout: Laticrete Permacolor Select 78 SterlingSilver
Thinset: LHT Plus



MADE IN USA



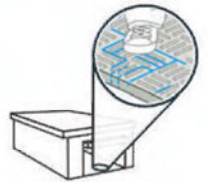
Series: DriveSeries08USA
Color: Smoke Grey
Finish: Super.Grip3L.Brightfinish
Size: 8" x 8"
Surface Traction Conforms to:
 ANSI A326.3 Use Category: 4.1.3
 Interior Wet Plus (IW+). 4.1.4
 Exterior Wet (EW).
 4.1.5 Oils/Grease (O/G).



Below: actual color varies, example is only representative



Grout: Laticrete Permacolor Select 42 Platinum
Thinset: LHT Plus



Series: DriveSeries08USA
Color: Genesis-Carbon Black
Finish: Super.Grip3L.Brightfinish
Size: 8" x 8"
Surface Traction Conforms to:
 ANSI A326.3 Use Category: 4.1.3
 Interior Wet Plus (IW+). 4.1.4
 Exterior Wet (EW).
 4.1.5 Oils/Grease (O/G).



Below: actual color varies, example is only representative



Grout: Laticrete Permacolor Select 60 Dusty Grey
Thinset: LHT Plus

Advantages

1. Advanced surface technology to better manage STF (slip, trip & fall) risk.
2. Surface has repeating lines elevated above the bed of the tile. Designed for greater foot, shoe-sole traction.
3. Includes Super.Grip. Advanced technology with "nano-textured" particles which increase surface traction.
4. Includes brightfinish. It will not permanently stain or darken when properly cleaned.

AutoStoneUSA Manufactured Declared Use

Evaluate for use in automotive workshop and service drive environments.

4.1.4 Exterior, Wet (EW) - level outdoor spaces walkways, sidewalks, where such floors may be walked upon when wet (excluding ice or snow) if level, clean, maintained and free of standing water or other contaminants.

4.1.5 Oils/Greases (O/G) - level areas regularly exposed to automotive fluids, etc., so long as such floors are level, regularly cleaned, maintained and free of standing water and contaminant build-up.

Declared Product Use & DCOF Requirement

Meets and exceeds .55 DCOF rating, appropriate for this environment of use: ANSI A326.3

4.1.3 Interior Wet Plus (IW+).
 ANSI A326.3 4.1.4 Exterior Wet (EW).
 ANSI A326.3 4.1.5 Oils/Grease (O/G).



Series: eShop08USA
Color: Alloy Grey
Finish: Super.Grip.Brightfinish
Size: 8" x 8"
Surface Traction Conforms to:
 ANSI A326.3 Use Category: 4.1.3
 Interior Wet Plus (IW+). 4.1.4
 Exterior Wet (EW).
 4.1.5 Oils/Grease (O/G).



eShop8usa
 better technology, better results

Below: actual color varies, example is only representative



Grout: Laticrete Permacolor Select 78 SterlingSilver
Thinset: LHT Plus



MADE IN USA



Series: eShop08USA
Color: Smoke Grey
Finish: Super.Grip.Brightfinish
Size: 8" x 8"
Surface Traction Conforms to:
 ANSI A326.3 Use Category: 4.1.3
 Interior Wet Plus (IW+). 4.1.4
 Exterior Wet (EW).
 4.1.5 Oils/Grease (O/G).



Below: actual color varies, example is only representative



Grout: Laticrete Permacolor Select 42 Platinum
Thinset: LHT Plus



Series: eShop08USA
Color: Genesis-Carbon Black
Finish: Super.Grip.Brightfinish
Size: 8" x 8"
Surface Traction Conforms to:
 ANSI A326.3 Use Category: 4.1.3
 Interior Wet Plus (IW+). 4.1.4
 Exterior Wet (EW).
 4.1.5 Oils/Grease (O/G).



Below: actual color varies, example is only representative



Grout: Laticrete Permacolor Select 60 Dusty Grey
Thinset: LHT Plus

Advantages

1. Advanced surface technology to better manage STF (slip, trip & fall) risk.
2. Surface has flat textured surface with enhanced surface traction. Designed for greater foot, shoe-sole traction.
3. Includes Super.Grip. Advanced technology with "nano-textured" particles which increase surface traction.
4. Includes brightfinish. It will not permanently stain or darken when properly cleaned.

AutoStoneUSA Manufactured Declared Use

Evaluate for use in automotive workshop and service drive environments.

4.1.4 Exterior, Wet (EW) - level outdoor spaces walkways, sidewalks, where such floors may be walked upon when wet (excluding ice or snow) if level, clean, maintained and free of standing water or other contaminants.

4.1.5 Oils/Greases (O/G) - level areas regularly exposed to automotive fluids, etc., so long as such floors are level, regularly cleaned, maintained and free of standing water and contaminant build-up.

Declared Product Use & DCOF Requirement

Meets and exceeds .55 DCOF rating, appropriate for this environment of use: ANSI A326.3
 4.1.3 Interior Wet Plus (IW+).
 ANSI A326.3 4.1.4 Exterior Wet (EW).
 ANSI A326.3 4.1.5 Oils/Grease (O/G).



eShop8usa

better technology, better results

Series: eShop08USA

Color: Alloy Grey

Finish: Super.Grip.Brightfinish

Size: 8" x 8"

Surface Traction Conforms to:

ANSI A326.3 Use Category: 4.1.3

Interior Wet Plus (IW+). 4.1.4

Exterior Wet (EW).

4.1.5 Oils/Grease (O/G).



DriveSeries8USA

advanced surface technology

Series: DriveSeries08USA

Color: Alloy Grey

Finish: Super.Grip3L.Brightfinish

Size: 8" x 8"

Surface Traction Conforms to:

ANSI A326.3 Use Category: 4.1.3

Interior Wet Plus (IW+). 4.1.4

Exterior Wet (EW).

4.1.5 Oils/Grease (O/G).



Series: eShop08USA

Color: Smoke Grey

Finish: Super.Grip.Brightfinish

Size: 8" x 8"

Surface Traction Conforms to:

ANSI A326.3 Use category: 4.1.3

Interior Wet Plus (IW+). 4.1.4

Exterior Wet (EW).

4.1.5 Oils/Grease (O/G).



Series: DriveSeries08USA

Color: Smoke Grey

Finish: Super.Grip3L.Brightfinish

Size: 8" x 8"

Surface Traction Conforms to:

ANSI A326.3 Use Category: 4.1.3

Interior Wet Plus (IW+). 4.1.4

Exterior Wet (EW).

4.1.5 Oils/Grease (O/G).



Series: eShop08USA

Color: Genesis-Carbon Black

Finish: Super.Grip.Brightfinish

Size: 8" x 8"

Surface Traction Conforms to:

ANSI A326.3 Use Category: 4.1.3

Interior Wet Plus (IW+). 4.1.4

Exterior Wet (EW).

4.1.5 Oils/Grease (O/G).



Series: DriveSeries08USA

Color: Genesis-Carbon Black

Finish: Super.Grip3L.Brightfinish

Size: 8" x 8"

Surface Traction Conforms to:

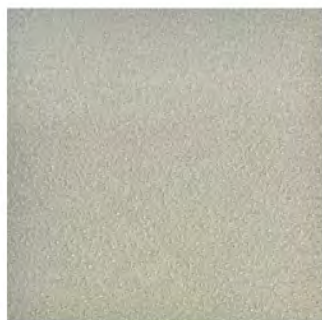
ANSI A326.3 Use Category: 4.1.3

Interior Wet Plus (IW+). 4.1.4

Exterior Wet (EW).

4.1.5 Oils/Grease (O/G).





Series: EnviroShop12USA
Color: Alloy Grey
Finish: Traction.Brightfinish
Size: 12" x 12"
Surface Traction Conforms to:
 ANSI A326.3 Use Category:
 4.1.3 Interior Wet Plus (IW+).



Series: EnviroShop12USA
Color: Smoke Grey
Finish: Traction.Brightfinish
Size: 12" x 12"
Surface Traction Conforms to:
 ANSI A326.3 Use Category:
 4.1.3 Interior Wet Plus (IW+).



Series: EnviroShop12USA
Color: Carbon Black
Finish: Traction.Brightfinish
Size: 12" x 12"
Surface Traction Conforms to:
 ANSI A326.3 Use Category:
 4.1.3 Interior Wet Plus (IW+).



EnviroShop12usa

smarter, better workshops

Below: actual color varies, example is only representative



Grout: Laticrete Permacolor Select 89 Smoke Grey
Thinset: LHT Plus



MADE IN USA

Below: actual color varies, example is only representative



Grout: Laticrete Permacolor Select 42 Platinum
Thinset: LHT Plus

Below: actual color varies, example is only representative



Grout: Laticrete Permacolor Select 45 Raven
Thinset: LHT Plus

Advantages

1. Our original workshop floor with textured surface.
2. Surface texture is elevated above the surface bed for easier cleaning.
3. Will not permanently stain or darken when properly cleaned.
4. This product has:

slipresistant

textured floor surfaces

AutoStoneUSA Manufactured Declared Use

4.1.3 Interior, Wet Plus (IW+) - evaluate for interior use in automotive workshop and service drive environments with high speed doors and tech locker rooms. Enviroshop12USA has a traction surface suitable for interior, wet plus applications, with good drainage. Floors walked on when wet should be level, clean, maintained and free of standing water or other contaminants. Should be cleaned with frequent maintenance to keep clean.

Declared Product Use & DCOF Requirement

Meets and exceeds .50 DCOF (wet) rating, appropriate for this environment of use:

ANSI A326.3 4.1.3 Interior Wet Plus (IW+).



Series: DriveSeries12USA
Color: Alloy Grey
Finish: Traction3L.Brightfinish
Size: 12" x 12"
Surface Traction Conforms to:
 ANSI A326.3 Use Category: 4.1.3
 Interior Wet Plus (IW+). 4.1.4
 Exterior Wet (EW).
 4.1.5 Oils/Grease (O/G).

DriveSeries12USA

advanced surface technology

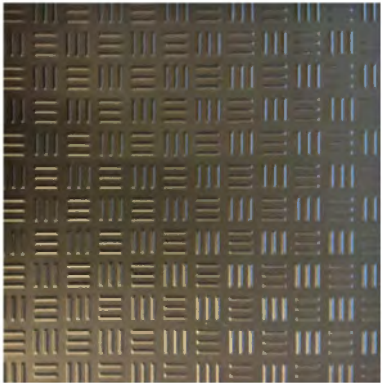


MADE IN USA

Below: actual color varies, example is only representative



Grout: Laticrete Permacolor Select 89 Smoke Grey
Thinset: LHT Plus



Series: DriveSeries12USA
Color: Carbon Black
Finish: Traction3L.Brightfinish
Size: 12" x 12"
Surface Traction Conforms to:
 ANSI A326.3 Use Category: 4.1.3
 Interior Wet Plus (IW+). 4.1.4
 Exterior Wet (EW).
 4.1.5 Oils/Grease (O/G).

Below: actual color varies, example is only representative



Grout: Laticrete Permacolor Select 45 Raven
Thinset: LHT Plus



A permanent enhanced porcelain technology floor system. Elevated traction provides a better surface to manage STF (slip, trip, and fall) risk in your automotive service drive, workshop and tech locker room shower areas. See declared uses below. Should be cleaned with frequent maintenance to keep clean and free of contamination and debris when dealership is operating. Spot spills should be removed immediately and not left on surface. Floor cleaning should include use of de-greasing chemical, floor scrubber sweeper machine with wet vacuum to suck-up dirty water and debris as part of cleaning process.

Advantages

1. Advanced surface technology to better manage STF (slip, trip & fall) risk.
2. Surface has repeating lines elevated above the bed of the tile. Designed for greater foot, shoe-sole traction.
3. Will not permanently stain or darken when properly cleaned.

AutoStoneUSA Manufactured Declared Use

Evaluate for use in automotive workshop and service drive environments.

4.1.3 Interior, Wet Plus (IW+) - evaluate for interior use in automotive workshop and service drive environments with high speed doors and tech locker rooms.

4.1.4 Exterior, Wet (EW) - level outdoor spaces walkways, sidewalks, where such floors may be walked upon when wet (excluding ice or snow) if level, clean, maintained and free of standing water or other contaminants.

4.1.5 Oils/Greases (O/G) - level areas regularly exposed to automotive fluids, etc., so long as such floors are level, regularly cleaned, maintained and free of standing water and contaminant build-up.

Declared Product Use & DCOF Requirement

Meets and exceeds .55 DCOF (wet) rating, appropriate for this environment of use:

ANSI A326.3 4.1.3 Interior Wet Plus (IW+).
 ANSI A326.3 4.1.4 Exterior Wet (EW).
 ANSI A326.3 4.1.5 Oils/Grease (O/G).

EnviroShop12usa

smarter, better workshops

DriveSeries12USA

advanced surface technology



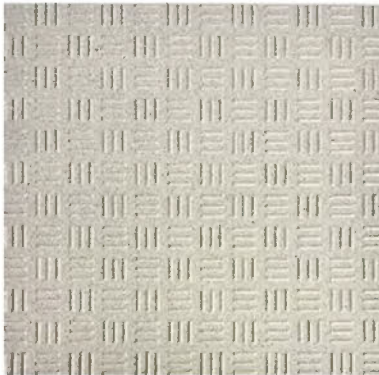
Series: EnviroShop12USA
Color: Alloy Grey
Finish: Traction.Brightfinish

Size: 12" x 12"

Surface Traction Conforms to:
ANSI A326.3 Use Category: 4.1.3
Interior Wet Plus (IW+).



brightfinish
ultra-cleanable technology



Series: DriveSeries12USA
Color: Alloy Grey
Finish: Traction3L.Brightfinish
Size: 12" x 12"

Surface Traction Conforms to:
ANSI A326.3 Use Category: 4.1.3
Interior Wet Plus (IW+). 4.1.4
Exterior Wet (EW).
4.1.5 Oils/Grease (O/G).



brightfinish
ultra-cleanable technology



Series: EnviroShop12USA
Color: Smoke Grey
Finish: Traction.Brightfinish
Size: 12" x 12"

Surface Traction Conforms to:
ANSI A326.3 Use Category: 4.1.3
Interior Wet Plus (IW+).

DriveSeries12USA
Smoke Grey
Currently Not Available



brightfinish
ultra-cleanable technology

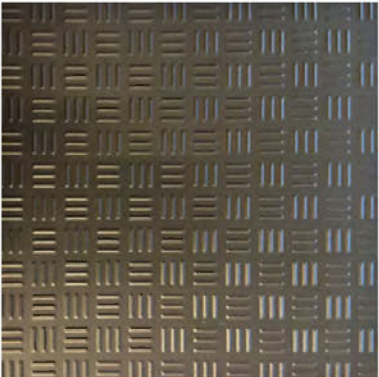


Series: EnviroShop12USA
Color: Carbon Black
Finish: Traction.Brightfinish
Size: 12" x 12"

Surface Traction Conforms to:
ANSI A326.3 Use Category: 4.1.3
Interior Wet Plus (IW+).



brightfinish
ultra-cleanable technology



Series: DriveSeries12USA
Color: Carbon Black
Finish: Traction3L.Brightfinish
Size: 12" x 12"

Surface Traction Conforms to:
ANSI A326.3 Use Category: 4.1.3
Interior Wet Plus (IW+). 4.1.4
Exterior Wet (EW).
4.1.5 Oils/Grease (O/G).

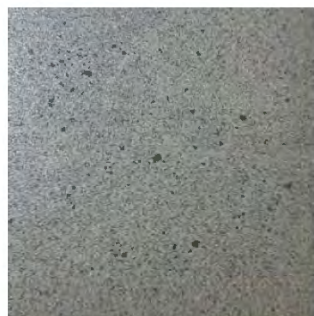


brightfinish
ultra-cleanable technology



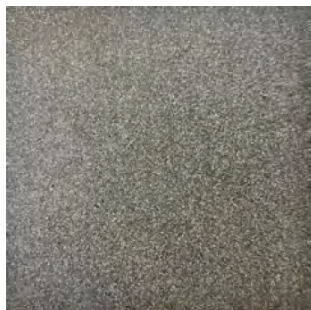
Series: ClinkerShopUSA
Color: Alloy Grey
Finish: Super.Grip.Brightfinish
Size: 4" x 8" x 1/2"
Surface Traction Conforms to:
 ANSI A326.3 Use Category: 4.1.3
 Interior Wet Plus (IW+). 4.1.4
 Exterior Wet (EW).
 4.1.5 Oils/Grease (O/G).

brightfinish
 ultra-cleanable technology



Series: ClinkerShop8USA
Color: Smoke Grey
Finish: Super.Grip.Brightfinish
Size: 4" x 8" x 1/2"
Surface Traction Conforms to:
 ANSI A326.3 Use Category: 4.1.3
 Interior Wet Plus (IW+). 4.1.4
 Exterior Wet (EW).
 4.1.5 Oils/Grease (O/G).

brightfinish
 ultra-cleanable technology



Series: ClinkerShopUSA
Color: Genesis-Carbon Black
Finish: Super.Grip.Brightfinish
Size: 4" x 8" x 1/2"
Surface Traction Conforms to:
 ANSI A326.3 Use Category: 4.1.3
 Interior Wet Plus (IW+). 4.1.4
 Exterior Wet (EW).
 4.1.5 Oils/Grease (O/G).

brightfinish
 ultra-cleanable technology

ClinkerShopUSA

Better technology, better performance, American made.

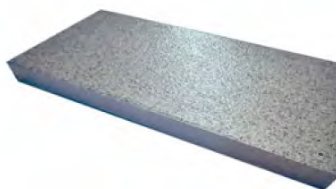


MADE IN USA

Below: actual color varies, example is only representative



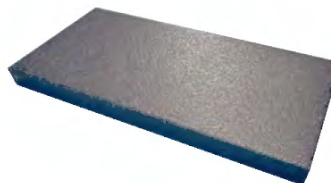
Grout: Laticrete Permacolor Select 78 SterlingSilver
Thinset: LHT Plus



Below: actual color varies, example is only representative



Grout: Laticrete Permacolor Select 42 Platinum
Thinset: LHT Plus



Below: actual color varies, example is only representative



Grout: Laticrete Permacolor Select 60 Dusty Grey
Thinset: LHT Plus

Advantages

1. Advanced surface technology to better manage STF (slip, trip & fall) risk.
2. Surface has Super.Grip surface texture. These nano-granules provide an enhanced surface tension
3. Includes Brightfinish which aids dealers with their cleaning practices. This is a permanent sealant that retards permanent staining and keeps floors in a "like new" appearance.

Manufactured Declared Uses

Evaluate for use in automotive workshop and service drive environments

4.1.4 (Exterior, Wet) - level outdoor spaces walkways, sidewalks, where such floors may be walked upon when wet (excluding ice or snow) if level, clean, maintained and free of standing water or other contaminants.

4.1.5 (Oils/Greases) - level areas regularly exposed to automotive fluids, etc., so long as such floors are level, regularly cleaned, maintained and free of standing water and contaminant build-up. Consult with your architect to determine dealership practices. **Review ANSI A326.3 2021 standard.**

Declared Product Use & DCOF Requirement

Meets and exceeds 55 DCOF rating as required for ANSI A326.3 4.1.3 Exterior Wet.

INDUSTRIAL ENVIRONMENT LVT LARGE (18" x 36") FORMAT FLOOR & WALL PANELS

RA3

Great for Parts, Storage Areas, Janitorial, Lunch & Break Rooms, Tech Locker Room Floors & Walls.

Wainscoting for Hallways, WorkShop Areas & All Back-Office Areas.

18" x 36" large format panels with rugged diamond plated surface texture to help reduce STF (slip, trip, and fall) risk.



**SURFACE
CAMOUFLAGE**

Face Camouflage enhances the beauty of your floor by reducing the negative visual daily contaminants generated during your workday.



**SCRATCH RESISTANT
SURFACE**

Will not dent, scratch, or chip like metal, concrete, epoxy, tile, or other finishes.



**CHEMICAL RESISTANT
SURFACE**

Resistant to water, gasoline, MEK, acetone, motor oil, isopropanol, acetic acid, ammonia, sodium chloride solution, and other chemicals.*

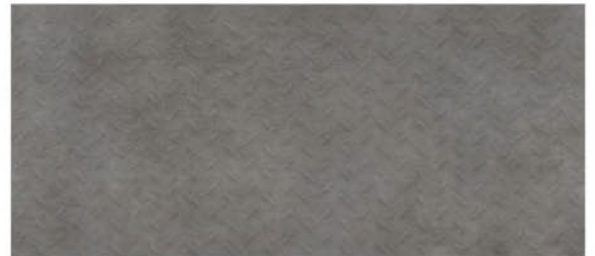


**IMPACT
GUARD SURFACE**

Strong, rugged, and stands up to blunt force impact better than any other surface.



Grey Concrete



Deep Concrete

RA IS RECOMMENDED FOR CLIMATE CONTROLLED ENVIRONMENTS WITH A ROOF, WALL AND DOORS FLOOD SAFE, WATER RESISTANT, + SOUND REDUCTION



CLIMATE-CONTROLLED ENVIRONMENTS

For environments with a temperature room range of 40- and 104-degrees.*



**FLOOD SAFE &
WATER RESISTANT**

Panels are moisture-resistant and can be submerged for days and remain bonded.



**LESS NOISE
BETTER CONDITIONS**

Reduces noise decibels (dB) and improves working conditions.

So easy to install that there is no need for expensive, highly skilled labor.

So fast that you can use immediately upon installation; no cure time required.

Panels are installed edge-to-edge, and wall-to-wall for a seamless, beautiful floor.

Commercial workshops install in 1-2 days (depending on size).


RA3

RA3 PANEL PRICE



Troweled Adhesive Method*

*Troweled adhesive will be added to your quote

Thickness: 3mm

Size: 18" x 36" Panel (4.5 SQFT Per Panel)



Features Included:

- Rated for climate-controlled environments (home garage)
- Surface Camouflage
- Scratch Resistant Surface
- Chemical Resistant Surface
- Impact Guard Surface
- Industrial Strength 30 mil Wear-Layer

Wall Tiles

Series: Premier

Color: Bright White Ice

Finish: Glossy

Size: 3" x 6" or 6" x 6" and 12" x 24"

Product Code (3" x 6"):

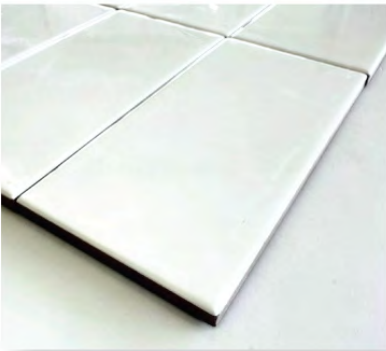
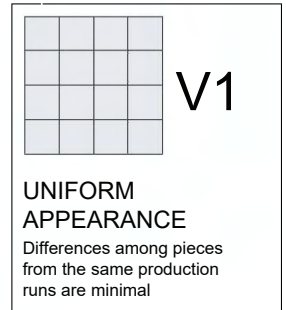
WT-1 (Alternate)

Product Code (6" x 6"):

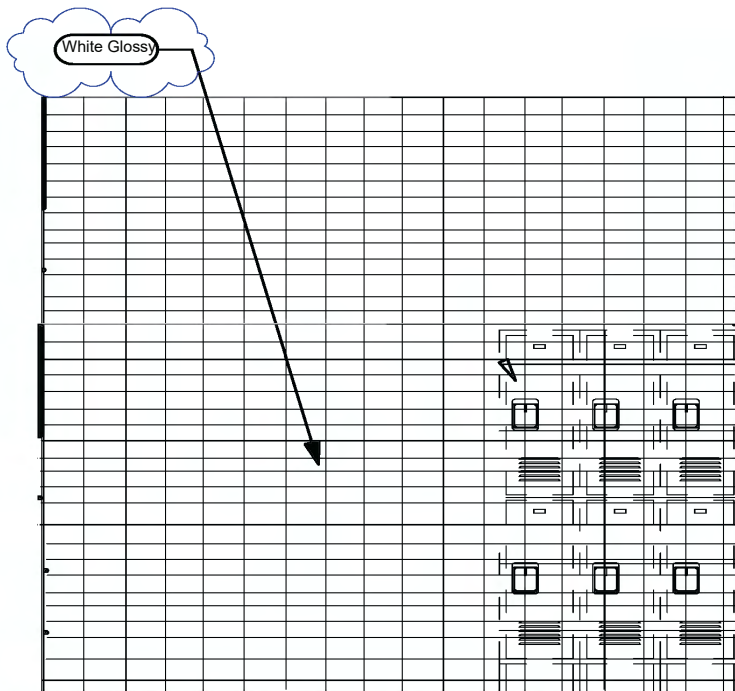
WT-3 (Alternate)

Product Code (12" x 24"):

WT-3 (Alternate)



03" x 06" Subway Series



Subway Tile for Restroom & Tech Walls

Color: White

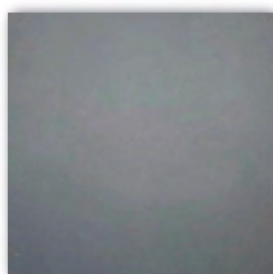
Finish: Glossy

Size: 03" x 06" (nominal)












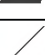
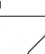
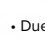
Service & Tech Restroom Areas Wall Tile

Series: ShopWall!
Color: Granita Grey
Finish: Satin
Size: 8" X 8" U.S. Nominal Dimensions .



Service & Tech Restroom Areas Wall Tile

Series: ShopWall!
Color: Anthracite Grey
Finish: Satin
Size: 8" X 8" U.S. Nominal Dimensions .

	SPECS	TEST METHOD	INDUSTRY STANDARD	AUTOSTONE VALUES
	WATER ABSORPTION	ASTM C373	≤0.5%	≤0.4%
	CHEMICAL RESISTANCE	ASTM C650	A tile sample is placed in continuous contact with a variety of chemicals for 24 hours. No sample must show visible defects.	NOT AFFECTED
	D.C.O.F. AcuTest®	ANSI A326.3	≥0.42% WET	≥0.42% WET
	STAIN RESISTANCE	ASTM C1378	Surfaces are exposed to staining agents for 24 hours followed by four cleaning procedures. Results are recorded post cleaning.	NOT AFFECTED
	BREAKING STRENGTH	ASTM C648	≥250 lb/ft ²	8mm ≥300 lb/ft ² 10mm ≥400 lb/ft ²
	RESISTANCE TO FREEZE	ASTM C1026	A tile sample is subjected to repeated processes of freezing and thawing. Sample must show no visible defects.	RESISTANT
	WARPAGE EDGE	ASTM C485	Warpage ± 0.4% or ± 0.05 in	≥± 0.4%
	WARPAGE DIAGONAL	ASTM C485	Warpage ± 0.4% or ± 0.07 in	≥± 0.4%
	WARPAGE EDGE	ASTM C485	Warpage ± 0.5% or ± 0.07 in	≥± 0.5%
	WARPAGE DIAGONAL	ASTM C485	Warpage ± 0.5% or ± 0.07 in	≥± 0.5%
	WEDGING	ASTM C502	± 0.25% or ± 0.03 in	≥± 0.25%
	THICKNESS	ASTM C499	Range: ± 0.04 in	≤0.04 in

• Due to the inherent nature of fired porcelain tile, it is important to note that the coefficient of friction may vary within and between product runs.

The AutoStoneUSA Kia Team

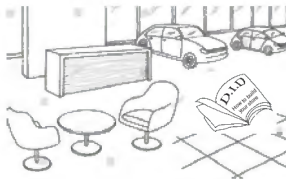


General and immediate online help.
You can find most information including quotes
on our Kia Brand Webpage



If you are a flooring
contractor and
need pricing

Kia Sales Team
kia@autostoneusa.com
<https://autostoneusa.com/kia/>
214-393-4875 phone



If you are the brand,
brand architect, or
brand CM

Lezlie Ferrell, Director of Sales
lezlie@autostoneusa.com
214-393-4861 direct dial



If you are a car
dealer

Barry Wells, President
barry@autostoneusa.com
214-393-4862 direct dial



If you are the
GC
builder/contractor

Rachel Metcalf, Architectural Liaison
rachel@autostoneusa.com
214-387-19551 direct dial



If you are the
AOR
local architect

Lezlie Ferrell, Director of Sales
lezlie@autostoneusa.com
214-393-4861 direct dial