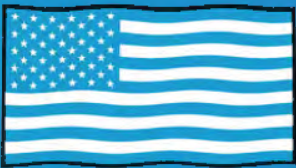


autostone usa



Honda Blue Stage Tile Guidebook

Honda Blue Stage Program
AutoStoneUSA.com/Honda

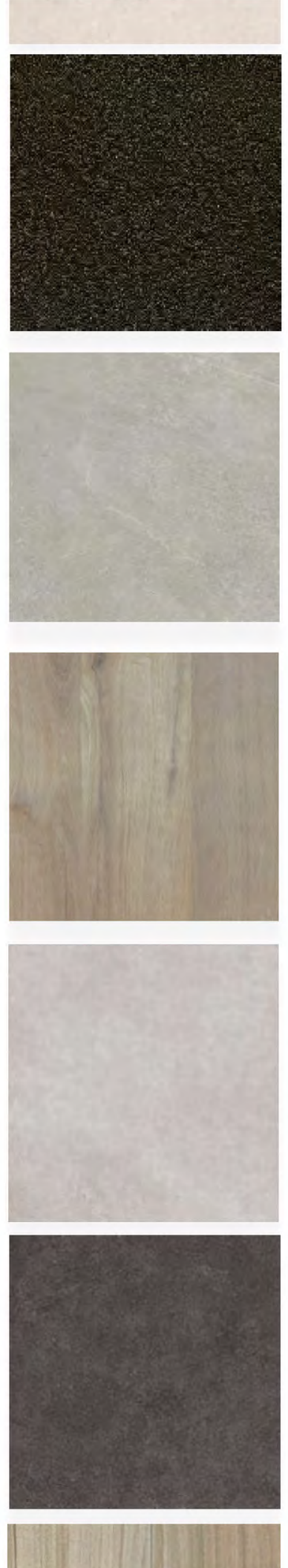


MADE IN AMERICA



AutoStoneUSA.com

© 2025 AutoStone Floor Systems, All Rights Reserved.





Q2KD



QUARRY TO KILN DISTRIBUTION MODEL

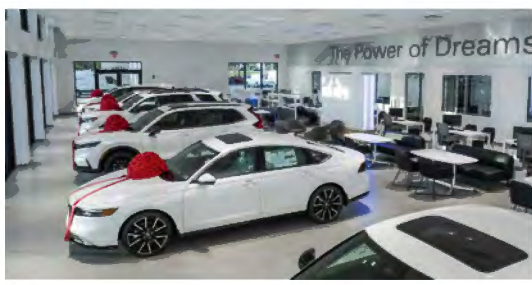
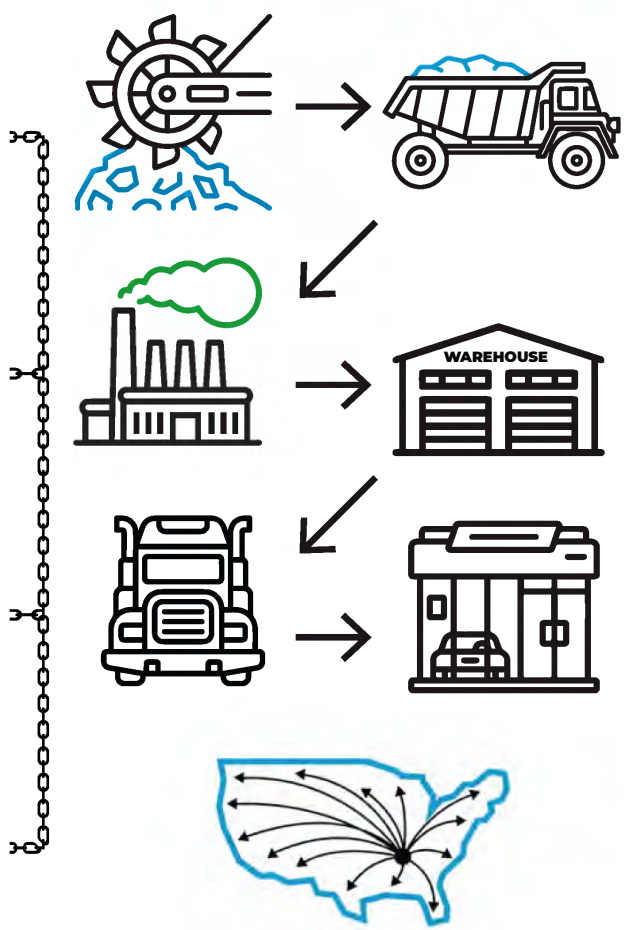
- 1** **LOCALLY SOURCED & LOCALLY QUARRIED**

 - ✓ Elimination of trans-ocean shipping
 - ✓ US jobs, shorter supply chain
- 2** **DOMESTICALLY PRODUCED & LOCALLY WAREHOUSED**

 - ✓ Less shipping
 - ✓ Reduced carbon footprint
- 3** **CONSOLIDATED SHIPPING DIRECT TO YOUR DEALERSHIP**

 - ✓ Eliminates distribution shipping
 - ✓ Reduces use of fossil fuel
- 4** **DOMESTICALLY PRODUCED SMARTER & EFFICIENT DISTRIBUTION**

 - ✓ Better for the environment
 - ✓ Saves you money





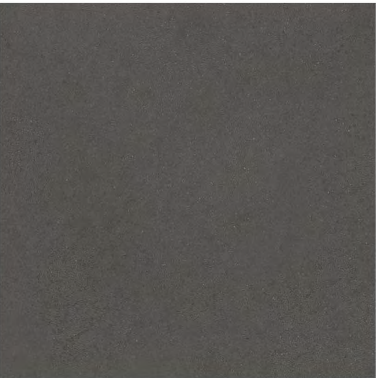
Showroom Tile

Series: Concrete
Color: Anthracite
Finish: Natural | Honed
Size: 32" x 32" (U.S. Nominal Dimensions)



MADE IN USA

For use in place of polished concrete and for vehicle display areas and customer restroom.

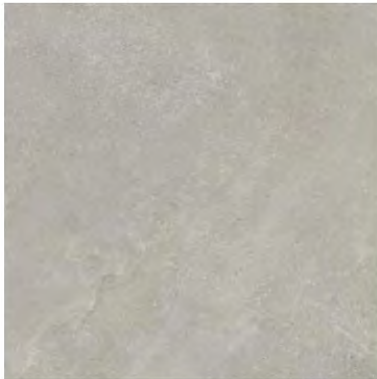


Showroom Tile

Series: Blue Stage
Color: Metro Black
Finish: Natural | Honed
Size: 24" x 24" (U.S. Nominal Dimensions)

For use in place of polished concrete and for vehicle display areas and customer restroom.





Showroom Tile

Series: Concrete

Color: Smoke

Finish: Natural | Honed

Size: 32" x 32" (U.S. Nominal Dimensions)



MADE IN USA

For use in place of polished concrete and for vehicle display areas and customer restroom.



Showroom Tile

Series: Forms2.0

Color: Silver Grey

Finish: Natural | Honed

Size: 32" x 32" (U.S. Nominal Dimensions)

For use in place of polished concrete and for vehicle display areas and customer restroom.





Showroom Customer Area Porcelain Tile

Series: WoodPlank

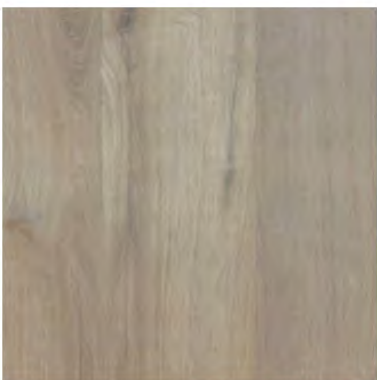
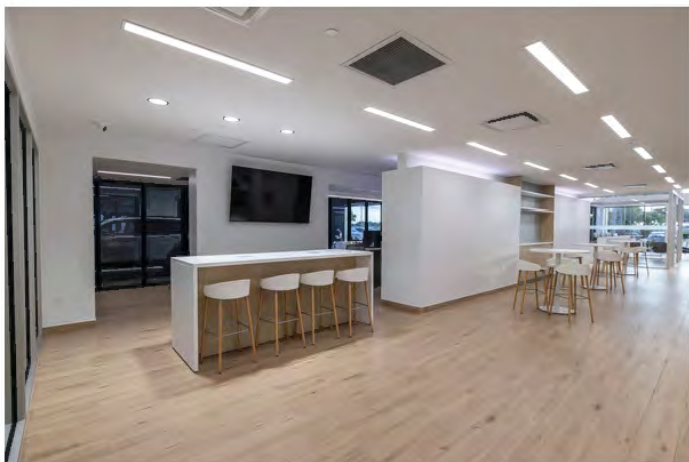
Color: Natural Cedar

Finish: Natural

Size: 8" X 48" (U.S. Nominal Dimensions)



MADE IN USA



Showroom Customer Area LVT Option

LVT WOODPLANK AUTOMOTIVE RETAIL COLLECTION
LVT (luxury vinyl tile)

Series: LVT

Color: Sincere Birch

Finish: Natural

Size: 7.25 x 48" x 2.5 mm

(U.S. Nominal Dimensions)

SIZE: 7.25" x 48"

THICKNESS: 2.5 MM

WEAR LAYER: 22MIL | 0.55 MM

FEATURES & BENEFITS



Superior Scratch
& Stain Resistant



Zero
Maintenance



Easy
Clean



Natural Looking
Design



Heavy
Foot Traffic



Easy
Installation



Corporate
Offices



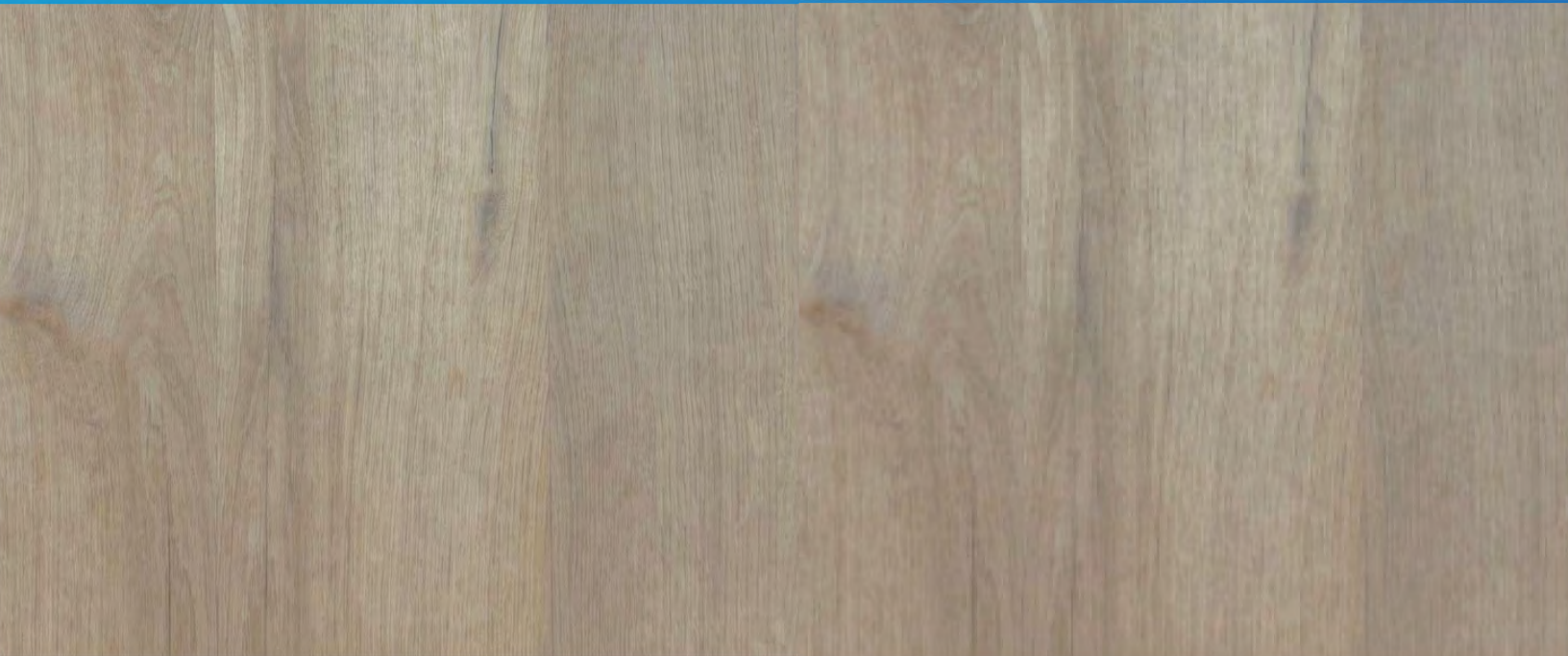
Commercial
Establishments



Retail
Outlets



Hotels &
Hospitality



SIZE: 7.25" x 48"

THICKNESS: 2.5 MM

WEAR LAYER: 22 MIL | 0.55 MM

PIECES: 6 PER CARTON

COVERAGE: 38.66 SQ FT / 3.59 M2 / CARTON

INSTALLATION: DRY BACK LVT

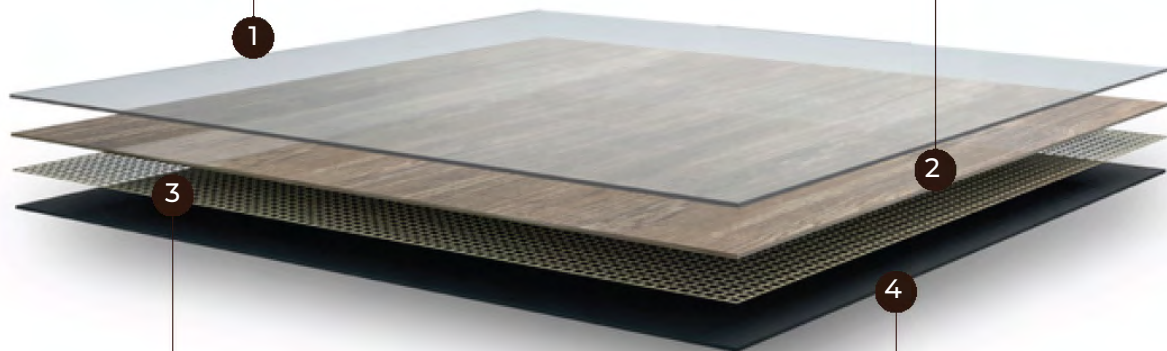
UV SURFACE TREATMENT: Thickness In Microns

- Transparent PVC Wear Layer 0.55 MM | 22 MIL
- Super Stain And Scratch Resistant
- Protects From Abrasion

DECORATIVE FILM

- Restores The Color And Emboss
- Beautiful Wood Designs
- Natural Looking & Natural Feeling

OVER ALL THICKNESS 2.5 MM



FIBER GLASS LAYER

- Provides Dimensional Stability
- Ensures Flat & Even Installation

1 MM PVC BACKING LAYER

- Insulates Sound
- Provides Underfoot Comfort
- No Bugs, No Termites



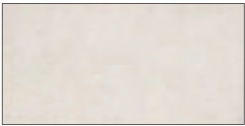
Wall Tile

Series: Blue Stage
Color: Sea Pearl
Finish: Natural | Honed

Size: 12" X 24" - (RECTIED EDGES | U.S. Nominal Dimensions)



MADE IN USA



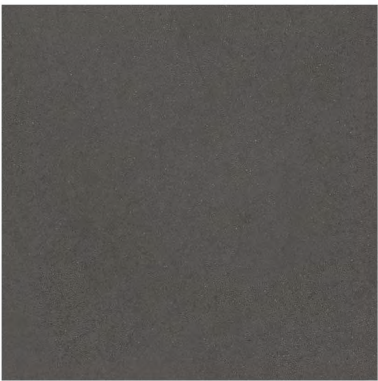
12"x24"



3"x12" Bullnose



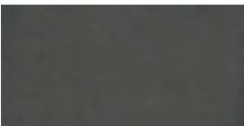
6"x12" Cove base



Wall Tile

Series: Blue Stage
Color: Metro Black
Finish: Natural | Honed

Size: 12" X 24"- (RECTIED EDGES | U.S. Nominal Dimensions)



12"x24"



3"x12" Bullnose



6"x12" Cove base



Series: EnviroShop12USA
Color: Alloy Grey
Finish: Traction.Brightfinish
Size: 12" x 12"
Surface Traction Conforms to:
 ANSI A326.3 Use Category:
 4.1.3 Interior Wet Plus (IW+).



Series: EnviroShop12USA
Color: Smoke Grey
Finish: Traction.Brightfinish
Size: 12" x 12"
Surface Traction Conforms to:
 ANSI A326.3 Use Category:
 4.1.3 Interior Wet Plus (IW+).



Series: EnviroShop12USA
Color: Carbon Black
Finish: Traction.Brightfinish
Size: 12" x 12"
Surface Traction Conforms to:
 ANSI A326.3 Use Category:
 4.1.3 Interior Wet Plus (IW+).



EnviroShop12usa

smarter, better workshops

Below: actual color varies, example is only representative

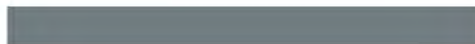


Grout: Laticrete Permacolor Select 89 Smoke Grey
Thinset: LHT Plus



MADE IN USA

Below: actual color varies, example is only representative



Grout: Laticrete Permacolor Select 42 Platinum
Thinset: LHT Plus

Below: actual color varies, example is only representative



Grout: Laticrete Permacolor Select 45 Raven
Thinset: LHT Plus

Advantages

1. Our original workshop floor with textured surface.
2. Surface texture is elevated above the surface bed for easier cleaning.
3. Will not permanently stain or darken when properly cleaned.
4. This product has:

slipresistant
 textured floor surfaces

AutoStoneUSA Manufactured Declared Use

4.1.3 Interior, Wet Plus (IW+) - evaluate for interior use in automotive workshop and service drive environments with high speed doors and tech locker rooms. Enviroshop12USA has a traction surface suitable for interior, wet plus applications, with good drainage. Floors walked on when wet should be level, clean, maintained and free of standing water or other contaminants. Should be cleaned with frequent maintenance to keep clean.

Declared Product Use & DCOF Requirement

Meets and exceeds .50 DCOF (wet) rating, appropriate for this environment of use:

ANSI A326.3 4.1.3 Interior Wet Plus (IW+).

EnviroShop12usa

smarter, better workshops

DriveSeries12USA

advanced surface technology



Series: EnviroShop12USA
Color: Alloy Grey
Finish: Traction.Brightfinish

Size: 12" x 12"

Surface Traction Conforms to:
ANSI A326.3 Use Category: 4.1.3
Interior Wet Plus (IW+).



Series: DriveSeries12USA
Color: Alloy Grey
Finish: Traction3L.Brightfinish
Size: 12" x 12"

Surface Traction Conforms to:
ANSI A326.3 Use Category: 4.1.3
Interior Wet Plus (IW+). 4.1.4
Exterior Wet (EW).
4.1.5 Oils/Grease (O/G).



Series: EnviroShop12USA
Color: Smoke Grey
Finish: Traction.Brightfinish
Size: 12" x 12"

Surface Traction Conforms to:
ANSI A326.3 Use Category: 4.1.3
Interior Wet Plus (IW+).

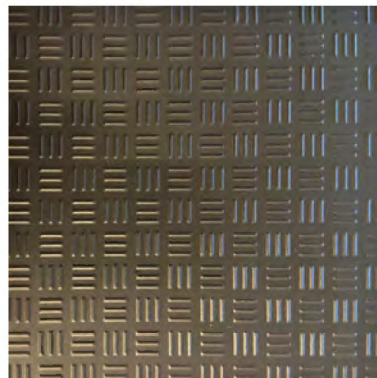


DriveSeries12USA
Smoke Grey
Currently Not Available



Series: EnviroShop12USA
Color: Carbon Black
Finish: Traction.Brightfinish
Size: 12" x 12"

Surface Traction Conforms to:
ANSI A326.3 Use Category: 4.1.3
Interior Wet Plus (IW+).



Series: DriveSeries12USA
Color: Carbon Black
Finish: Traction3L.Brightfinish
Size: 12" x 12"

Surface Traction Conforms to:
ANSI A326.3 Use Category: 4.1.3
Interior Wet Plus (IW+). 4.1.4
Exterior Wet (EW).
4.1.5 Oils/Grease (O/G).





Series: DriveSeries12USA
Color: Alloy Grey
Finish: Traction3L.Brightfinish
Size: 12" x 12"
Surface Traction Conforms to:
 ANSI A326.3 Use Category: 4.1.3
 Interior Wet Plus (IW+). 4.1.4
 Exterior Wet (EW).
 4.1.5 Oils/Grease (O/G).

DriveSeries12USA

advanced surface technology

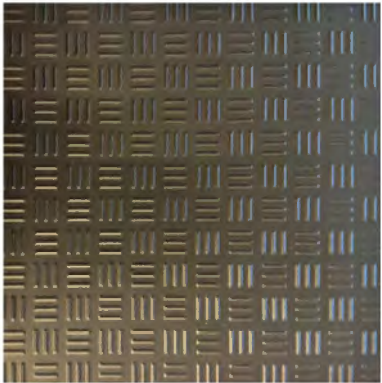


MADE IN USA

Below: actual color varies, example is only representative



Grout: Laticrete Permacolor Select 89 Smoke Grey
Thinset: LHT Plus



Series: DriveSeries12USA
Color: Carbon Black
Finish: Traction3L.Brightfinish
Size: 12" x 12"
Surface Traction Conforms to:
 ANSI A326.3 Use Category: 4.1.3
 Interior Wet Plus (IW+). 4.1.4
 Exterior Wet (EW).
 4.1.5 Oils/Grease (O/G).

Below: actual color varies, example is only representative



Grout: Laticrete Permacolor Select 45 Raven
Thinset: LHT Plus

A permanent enhanced porcelain technology floor system. Elevated traction provides a better surface to manage STF (slip, trip, and fall) risk in your automotive service drive, workshop and tech locker room shower areas. See declared uses below. Should be cleaned with frequent maintenance to keep clean and free of contamination and debris when dealership is operating. Spot spills should be removed immediately and not left on surface. Floor cleaning should include use of de-greasing chemical, floor scrubber sweeper machine with wet vacuum to suck-up dirty water and debris as part of cleaning process.

Advantages

1. Advanced surface technology to better manage STF (slip, trip & fall) risk.
2. Surface has repeating lines elevated above the bed of the tile. Designed for greater foot, shoe-sole traction.
3. Will not permanently stain or darken when properly cleaned.

AutoStoneUSA Manufactured Declared Use

Evaluate for use in automotive workshop and service drive environments.

4.1.3 Interior, Wet Plus (IW+) - evaluate for interior use in automotive workshop and service drive environments with high speed doors and tech locker rooms.

4.1.4 Exterior, Wet (EW) - level outdoor spaces walkways, sidewalks, where such floors may be walked upon when wet (excluding ice or snow) if level, clean, maintained and free of standing water or other contaminants.

4.1.5 Oils/Greases (O/G) - level areas regularly exposed to automotive fluids, etc., so long as such floors are level, regularly cleaned, maintained and free of standing water and contaminant build-up.

Declared Product Use & DCOF Requirement

Meets and exceeds .55 DCOF (wet) rating, appropriate for this environment of use:

ANSI A326.3 4.1.3 Interior Wet Plus (IW+).
 ANSI A326.3 4.1.4 Exterior Wet (EW).
 ANSI A326.3 4.1.5 Oils/Grease (O/G).



Series: DriveSeries08USA
Color: Alloy Grey
Finish: Super.Grip3L.Brightfinish
Size: 8" x 8"
Surface Traction Conforms to:
 ANSI A326.3 Use Category: 4.1.3
 Interior Wet Plus (IW+). 4.1.4
 Exterior Wet (EW).
 4.1.5 Oils/Grease (O/G).



DriveSeries8USA

advanced surface technology

Below: actual color varies, example is only representative



Grout: Laticrete Permacolor Select 78 SterlingSilver
Thinset: LHT Plus



MADE IN USA



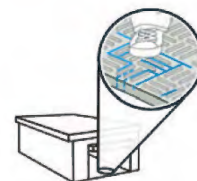
Series: DriveSeries08USA
Color: Smoke Grey
Finish: Super.Grip3L.Brightfinish
Size: 8" x 8"
Surface Traction Conforms to:
 ANSI A326.3 Use Category: 4.1.3
 Interior Wet Plus (IW+). 4.1.4
 Exterior Wet (EW).
 4.1.5 Oils/Grease (O/G).



Below: actual color varies, example is only representative



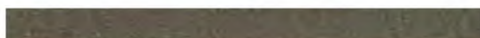
Grout: Laticrete Permacolor Select 42 Platinum
Thinset: LHT Plus



Series: DriveSeries08USA
Color: Genesis-Carbon Black
Finish: Super.Grip3L.Brightfinish
Size: 8" x 8"
Surface Traction Conforms to:
 ANSI A326.3 Use Category: 4.1.3
 Interior Wet Plus (IW+). 4.1.4
 Exterior Wet (EW).
 4.1.5 Oils/Grease (O/G).



Below: actual color varies, example is only representative



Grout: Laticrete Permacolor Select 60 Dusty Grey
Thinset: LHT Plus

Advantages

1. Advanced surface technology to better manage STF (slip, trip & fall) risk.
2. Surface has repeating lines elevated above the bed of the tile. Designed for greater foot, shoe-sole traction.
3. Includes Super.Grip. Advanced technology with "nano-textured" particles which increase surface traction.
4. Includes brightfinish. It will not permanently stain or darken when properly cleaned.

AutoStoneUSA Manufactured Declared Use

Evaluate for use in automotive workshop and service drive environments.

4.1.4 Exterior, Wet (EW) - level outdoor spaces walkways, sidewalks, where such floors may be walked upon when wet (excluding ice or snow) if level, clean, maintained and free of standing water or other contaminants.

4.1.5 Oils/Greases (O/G) - level areas regularly exposed to automotive fluids, etc., so long as such floors are level, regularly cleaned, maintained and free of standing water and contaminant build-up.

Declared Product Use & DCOF Requirement

Meets and exceeds .55 DCOF rating, appropriate for this environment of use: ANSI A326.3
 4.1.3 Interior Wet Plus (IW+).
 ANSI A326.3 4.1.4 Exterior Wet (EW).
 ANSI A326.3 4.1.5 Oils/Grease (O/G).



Series: eShop08USA
Color: Alloy Grey
Finish: Super.Grip.Brightfinish
Size: 8" x 8"
Surface Traction Conforms to:
 ANSI A326.3 Use Category: 4.1.3
 Interior Wet Plus (IW+). 4.1.4
 Exterior Wet (EW).
 4.1.5 Oils/Grease (O/G).



eShop8usa

better technology, better results

Below: actual color varies, example is only representative



Grout: Laticrete Permacolor Select 78 SterlingSilver
Thinset: LHT Plus



MADE IN USA



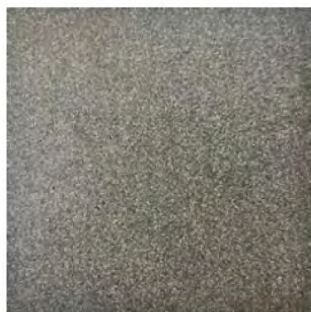
Series: eShop08USA
Color: Smoke Grey
Finish: Super.Grip.Brightfinish
Size: 8" x 8"
Surface Traction Conforms to:
 ANSI A326.3 Use Category: 4.1.3
 Interior Wet Plus (IW+). 4.1.4
 Exterior Wet (EW).
 4.1.5 Oils/Grease (O/G).



Below: actual color varies, example is only representative



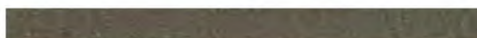
Grout: Laticrete Permacolor Select 42 Platinum
Thinset: LHT Plus



Series: eShop08USA
Color: Genesis-Carbon Black
Finish: Super.Grip.Brightfinish
Size: 8" x 8"
Surface Traction Conforms to:
 ANSI A326.3 Use Category: 4.1.3
 Interior Wet Plus (IW+). 4.1.4
 Exterior Wet (EW).
 4.1.5 Oils/Grease (O/G).



Below: actual color varies, example is only representative



Grout: Laticrete Permacolor Select 60 Dusty Grey
Thinset: LHT Plus

Advantages

1. Advanced surface technology to better manage STF (slip, trip & fall) risk.
2. Surface has flat textured surface with enhanced surface traction. Designed for greater foot, shoe-sole traction.
3. Includes Super.Grip. Advanced technology with "nano-textured" particles which increase surface traction.
4. Includes brightfinish. It will not permanently stain or darken when properly cleaned.

AutoStoneUSA Manufactured Declared Use

Evaluate for use in automotive workshop and service drive environments.

4.1.4 Exterior, Wet (EW) - level outdoor spaces walkways, sidewalks, where such floors may be walked upon when wet (excluding ice or snow) if level, clean, maintained and free of standing water or other contaminants.

4.1.5 Oils/Greases (O/G) - level areas regularly exposed to automotive fluids, etc., so long as such floors are level, regularly cleaned, maintained and free of standing water and contaminant build-up.

Declared Product Use & DCOF Requirement

Meets and exceeds .55 DCOF rating, appropriate for this environment of use: ANSI A326.3
 4.1.3 Interior Wet Plus (IW+).
 ANSI A326.3 4.1.4 Exterior Wet (EW).
 ANSI A326.3 4.1.5 Oils/Grease (O/G).



eShop8usa

better technology, better results

Series: eShop08USA

Color: Alloy Grey

Finish: Super.Grip.Brightfinish

Size: 8" x 8"

Surface Traction Conforms to:

ANSI A326.3 Use Category: 4.1.3

Interior Wet Plus (IW+). 4.1.4

Exterior Wet (EW).

4.1.5 Oils/Grease (O/G).



brightfinish
ultra-cleanable technology



DriveSeries8USA

advanced surface technology

Series: DriveSeries08USA

Color: Alloy Grey

Finish: Super.Grip3L.Brightfinish

Size: 8" x 8"

Surface Traction Conforms to:

ANSI A326.3 Use Category: 4.1.3

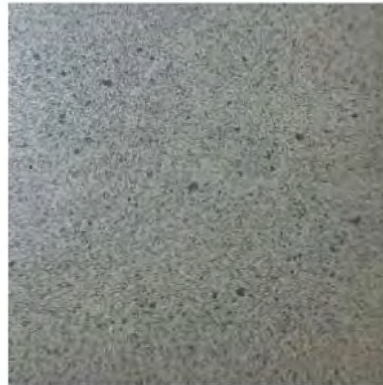
Interior Wet Plus (IW+). 4.1.4

Exterior Wet (EW).

4.1.5 Oils/Grease (O/G).



brightfinish
ultra-cleanable technology



Series: eShop08USA

Color: Smoke Grey

Finish: Super.Grip.Brightfinish

Size: 8" x 8"

Surface Traction Conforms to:

ANSI A326.3 Use category: 4.1.3

Interior Wet Plus (IW+). 4.1.4

Exterior Wet (EW).

4.1.5 Oils/Grease (O/G).



brightfinish
ultra-cleanable technology



Series: DriveSeries08USA

Color: Smoke Grey

Finish: Super.Grip3L.Brightfinish

Size: 8" x 8"

Surface Traction Conforms to:

ANSI A326.3 Use Category: 4.1.3

Interior Wet Plus (IW+). 4.1.4

Exterior Wet (EW).

4.1.5 Oils/Grease (O/G).



brightfinish
ultra-cleanable technology



Series: eShp0

Color: Carbon/Genesis Black

Finish: Super.Grip.Brightfinish

Size: 8" x 8"

Surface Traction Conforms to:

ANSI A326.3 Use Category: 4.1.3

Interior Wet Plus (IW+). 4.1.4

Exterior Wet (EW).

4.1.5 Oils/Grease (O/G).



brightfinish
ultra-cleanable technology



Series: DriveSeries08TRÅ

Color: Carbon/Genesis Black

Finish: Super.Grip3L.Brightfinish

Size: 8" x 8"

Surface Traction Conforms to:

ANSI A326.3 Use Category: 4.1.3

Interior Wet Plus (IW+). 4.1.4

Exterior Wet (EW).

4.1.5 Oils/Grease (O/G).

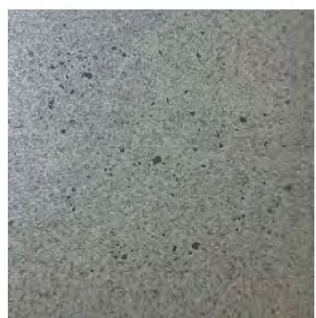


brightfinish
ultra-cleanable technology



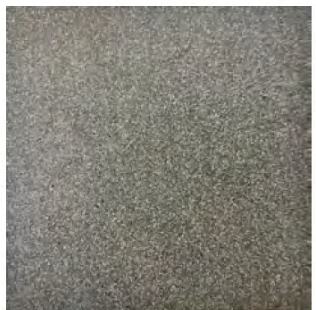
Series: ClinkerShopUSA
Color: Alloy Grey
Finish: Super.Grip.Brightfinish
Size: 4" x 8" x 1/2"
Surface Traction Conforms to:
 ANSI A326.3 Use Category: 4.1.3
 Interior Wet Plus (IW+). 4.1.4
 Exterior Wet (EW).
 4.1.5 Oils/Grease (O/G).

brightfinish
 ultra cleanable technology



Series: ClinkerShop8USA
Color: Smoke Grey
Finish: Super.Grip.Brightfinish
Size: 4" x 8" x 1/2"
Surface Traction Conforms to:
 ANSI A326.3 Use Category: 4.1.3
 Interior Wet Plus (IW+). 4.1.4
 Exterior Wet (EW).
 4.1.5 Oils/Grease (O/G).

brightfinish
 ultra cleanable technology



Series: ClinkerShopUSA
Color: Genesis-Carbon Black
Finish: Super.Grip.Brightfinish
Size: 4" x 8" x 1/2"
Surface Traction Conforms to:
 ANSI A326.3 Use Category: 4.1.3
 Interior Wet Plus (IW+). 4.1.4
 Exterior Wet (EW).
 4.1.5 Oils/Grease (O/G).

brightfinish
 ultra cleanable technology

ClinkerShopUSA

Better technology, better performance, American made.



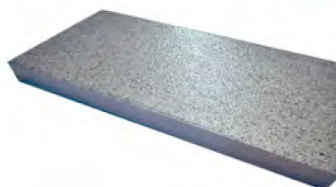
Below: actual color varies, example is only representative



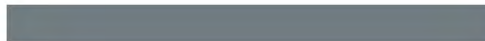
Grout: Laticrete Permacolor Select 78 Sterling Silver
Thinset: LHT Plus



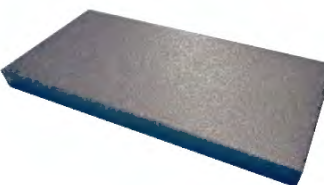
MADE IN USA



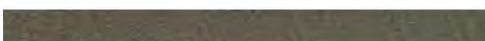
Below: actual color varies, example is only representative



Grout: Laticrete Permacolor Select 42 Platinum
Thinset: LHT Plus



Below: actual color varies, example is only representative



Grout: Laticrete Permacolor Select 60 Dusty Grey
Thinset: LHT Plus

Advantages

1. Advanced surface technology to better manage STF (slip, trip & fall) risk.
2. Surface has Super.Grip surface texture. These nano-granules provide an enhanced surface tension
3. Includes Brightfinish which aids dealers with their cleaning practices. This is a permanent sealant that retards permanent staining and keeps floors in a "like new" appearance.

Manufactured Declared Uses

Evaluate for use in automotive workshop and service drive environments

4.1.4 (Exterior, Wet) - level outdoor spaces walkways, sidewalks, where such floors may be walked upon when wet (excluding ice or snow) if level, clean, maintained and free of standing water or other contaminants.

4.1.5 (Oils/Greases) - level areas regularly exposed to automotive fluids, etc., so long as such floors are level, regularly cleaned, maintained and free of standing water and contaminant build-up. Consult with your architect to determine dealership practices. **Review ANSI A326.3 2021 standard.**

Declared Product Use & DCOF Requirement

Meets and exceeds 55 DCOF rating as required for ANSI A326.3 4.1.3 Exterior Wet.

INDUSTRIAL ENVIRONMENT LVT LARGE (18" x 36") FORMAT FLOOR & WALL PANELS

RA3

Great for Parts, Storage Areas, Janitorial, Lunch & Break Rooms, Tech Locker Room Floors & Walls.

Wainscoting for Hallways, WorkShop Areas & All Back-Office Areas.

18" x 36" large format panels with rugged diamond plated surface texture to help reduce STF (slip, trip, and fall) risk.



**SURFACE
CAMOUFLAGE**

Face Camouflage enhances the beauty of your floor by reducing the negative visual daily contaminants generated during your workday.



**SCRATCH RESISTANT
SURFACE**

Will not dent, scratch, or chip like metal, concrete, epoxy, tile, or other finishes.



**CHEMICAL RESISTANT
SURFACE**

Resistant to water, gasoline, MEK, acetone, motor oil, isopropanol, acetic acid, ammonia, sodium chloride solution, and other chemicals.*



**IMPACT
GUARD SURFACE**

Strong, rugged, and stands up to blunt force impact better than any other surface.



RA IS RECOMMENDED FOR CLIMATE CONTROLLED ENVIRONMENTS WITH A ROOF, WALL AND DOORS FLOOD SAFE, WATER RESISTANT, + SOUND REDUCTION



CLIMATE-CONTROLLED ENVIRONMENTS

For environments with a temperature room range of 40- and 104-degrees.*

*Based on different manufacturers' data and may vary by application.



**FLOOD SAFE &
WATER RESISTANT**

Panels are moisture-resistant and can be submerged for days and remain bonded.



**LESS NOISE
BETTER CONDITIONS**

Reduces noise decibels (dB) and improves working conditions.

So easy to install that there is no need for expensive, highly skilled labor.

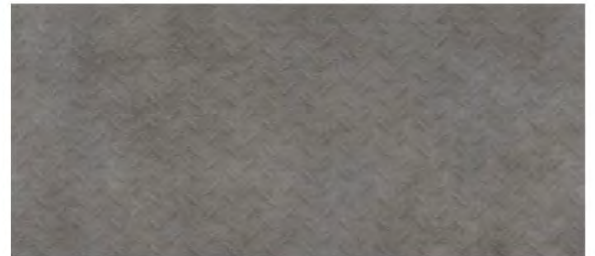
So fast that you can use immediately upon installation; no cure time required.

Panels are installed edge-to-edge, and wall-to-wall for a seamless, beautiful floor.

Commercial workshops install in 1-2 days (depending on size).



Grey Concrete



Deep Concrete

RA3

RA3 PANEL PRICE



Troweled Adhesive Method*

*Troweled adhesive will be added to your quote

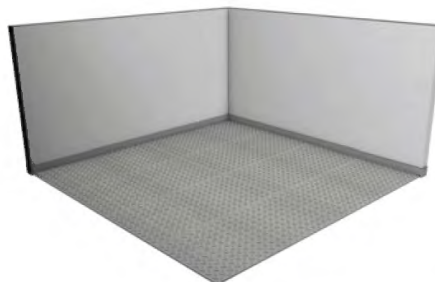
Thickness: 3mm

Size: 18" x 36" Panel (4.5 SQFT Per Panel)



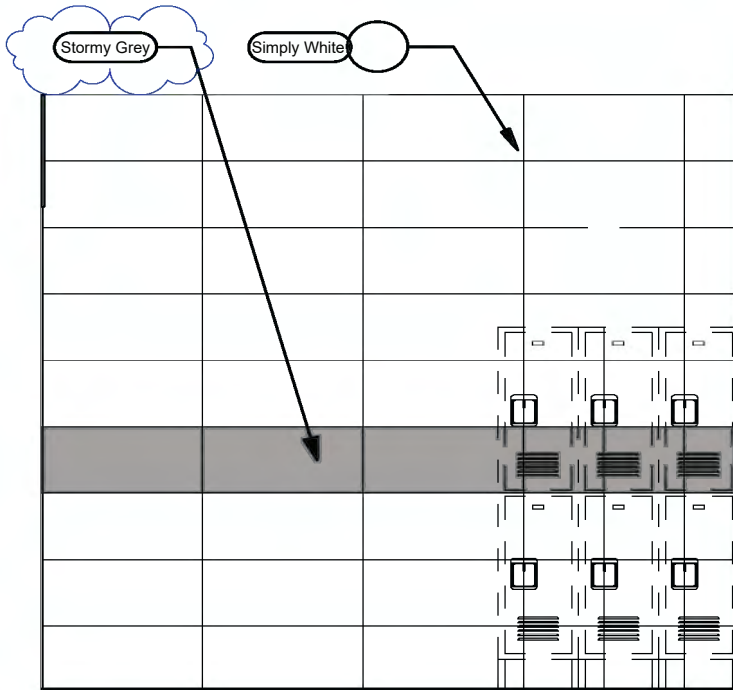
Features Included:

- Rated for climate-controlled environments (home garage)
- Surface Camouflage
- Scratch Resistant Surface
- Chemical Resistant Surface
- Impact Guard Surface
- Industrial Strength 30 mil Wear-Layer



ShopWalls!

12" x 24" Series Modern Lines



Restroom & Tech Walls

ShopWalls! provides automotive retail & service environments an affordable and attractive wall tile material designed for these specific environments.

This larger format (12" x 24") tile minimizes grout lines while creating a modern and attractive environment for your service techs. Rectified edges for precise & tight grout joint alignment.

Benefits includes wall surfaces that are easy to clean so they are maintained in a "like-new" appearance.

Pricing is affordable and these materials can ship with other AutoStone materials to reduce freight costs.

Affordable, available, and designed for your tech walls! All materials ship together to reduce repetitive fossil fuel use.

No supply chain challenges or delivery delays.



Restroom & Tech Walls

Color: Simply White

Finish: Satin

Size: 12" x 24" (nominal)



Restroom & Tech Walls

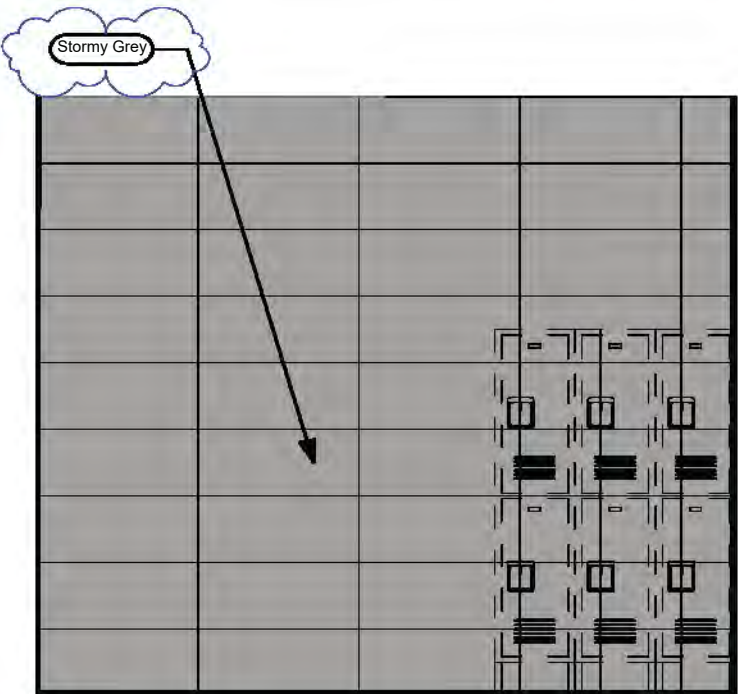
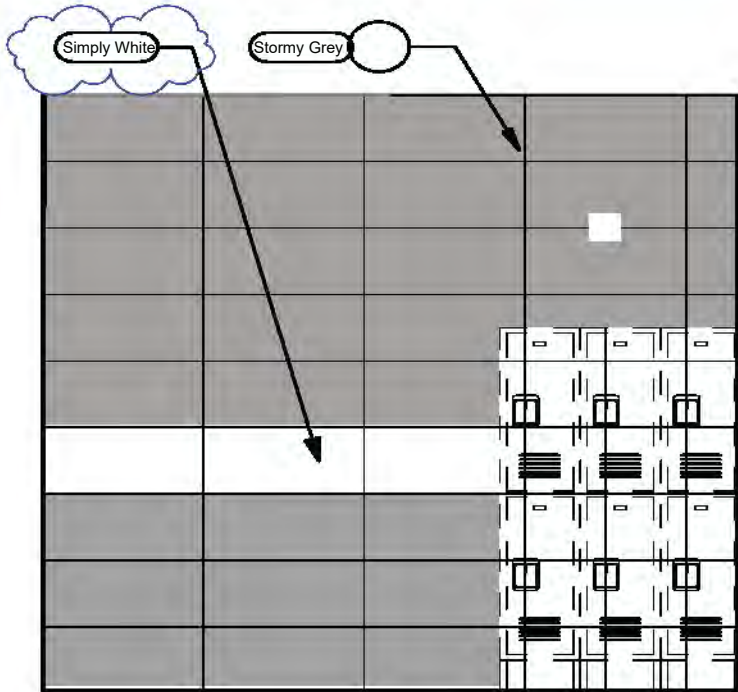
Color: Stormy Grey

Finish: Glossy

Size: 12" x 24" (nominal)

ShopWalls!

12" x 24" Series Modern Lines

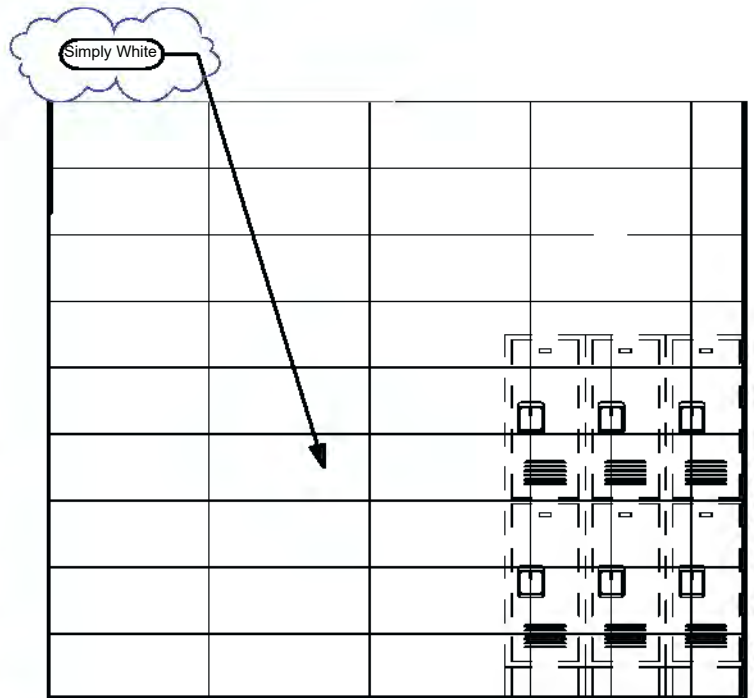


Restroom & Tech Walls

ShopWalls! have rectified edges for precise tile alignment and tight grout joints.

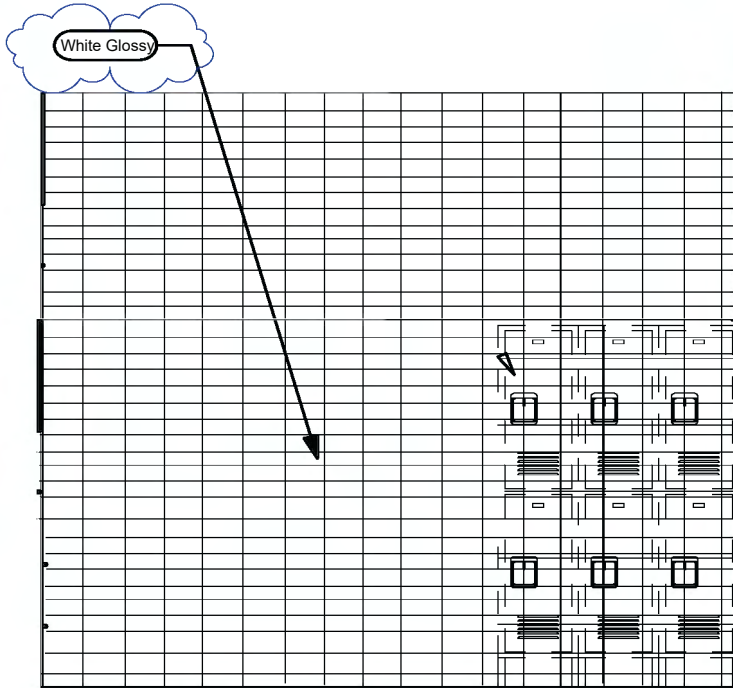
Both colors are the exact size and are designed as a system to support your wet wall, locker room wall environment needs.

Affordable, available and the right choice for your automotive project.



ShopWalls!

03" x 06" Subway Series



Restroom & Tech Walls

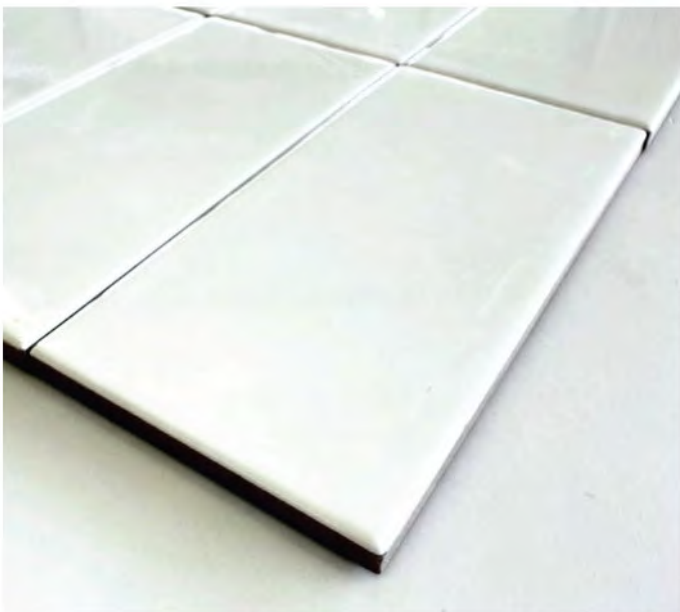
ShopWalls! provides automotive retail & service environments an affordable and attractive wall tile material designed for these specific environments.

This subway series format (03" x 06") tile creates an attractive environment for your service techs. Soft profile edge enhances the design profile of this series.

Pricing is affordable and these materials can ship with other AutoStone materials to reduce freight costs, fossil fuel use and reduces carbon footprint through consolidated supply and shipping.

Affordable, available, and designed for your tech walls! All materials ship together to reduce repetitive fossil fuel use.

No supply chain challenges or delivery delays.



Subway Tile for Restroom & Tech Walls

Color: White
Finish: Glossy
Size: 03" x 06" (nominal)



Service & Tech Restroom Areas Wall Tile

Series: ShopWall!
Color: Granita Grey
Finish: Satin
Size: 8" X 8" U.S. Nominal Dimensions .



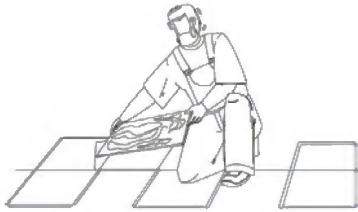
Service & Tech Restroom Areas Wall Tile

Series: ShopWall!
Color: Anthracite Grey
Finish: Satin
Size: 8" X 8" U.S. Nominal Dimensions .

The AutoStoneUSA Honda Team

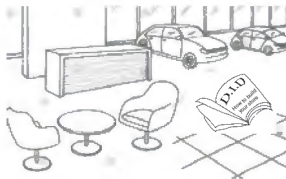


**General and immediate online help.
You can find most information including quotes
on our Honda Brand Webpage**



**If you are a flooring
contractor and
need pricing**

Honda Sales Team
honda@autostoneusa.com
<https://autostoneusa.com/honda/>
214-393-4875 phone



**If you are the brand,
brand architect, or
brand CM**

Lezlie Ferrell, Director of Sales
lezlie@autostoneusa.com
214-393-4861 direct dial



**If you are a car
dealer**

Barry Wells, President
barry@autostoneusa.com
214-393-4862 direct dial



**If you are the
GC
builder/contractor**

Rachel Metcalf, Architectural Liaison
rachel@autostoneusa.com
214-387-19551 direct dial



**If you are the
AOR
local architect**

Lezlie Ferrell, Director of Sales
lezlie@autostoneusa.com
214-393-4861 direct dial