

EnviroShop12usa

smarter, better workshops

DriveSeries12USA

advanced surface technology



Series: EnviroShop12USA
Color: Alloy Grey
Finish: Traction.Brightfinish
Size: 12" x 12"

Surface Traction Conforms to:
ANSI A326.3 Use Category: 4.1.3
Interior Wet Plus (IW+).



Series: DriveSeries12USA
Color: Alloy Grey
Finish: Traction3L.Brightfinish
Size: 12" x 12"

Surface Traction Conforms to:
ANSI A326.3 Use Category: 4.1.3
Interior Wet Plus (IW+). 4.1.4
Exterior Wet (EW).
4.1.5 Oils/Grease (O/G).



Series: EnviroShop12USA
Color: Smoke Grey
Finish: Traction.Brightfinish
Size: 12" x 12"

Surface Traction Conforms to:
ANSI A326.3 Use Category: 4.1.3
Interior Wet Plus (IW+).

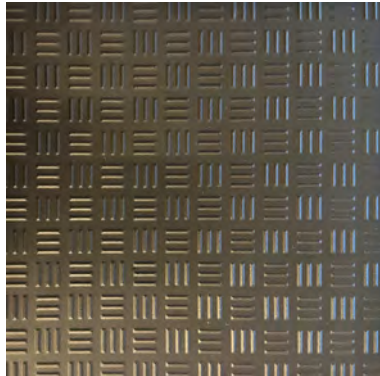


DriveSeries12USA
Smoke Grey
Currently Not Available



Series: EnviroShop12USA
Color: Carbon Black
Finish: Traction.Brightfinish
Size: 12" x 12"

Surface Traction Conforms to:
ANSI A326.3 Use Category: 4.1.3
Interior Wet Plus (IW+).



Series: DriveSeries12USA
Color: Carbon Black
Finish: Traction3L.Brightfinish
Size: 12" x 12"

Surface Traction Conforms to:
ANSI A326.3 Use Category: 4.1.3
Interior Wet Plus (IW+). 4.1.4
Exterior Wet (EW).
4.1.5 Oils/Grease (O/G).





Series: EnviroShop12USA
Color: Alloy Grey
Finish: Traction.Brightfinish
Size: 12" x 12"
Surface Traction Conforms to:
 ANSI A326.3 Use Category:
 4.1.3 Interior Wet Plus (IW+).



Series: EnviroShop12USA
Color: Smoke Grey
Finish: Traction.Brightfinish
Size: 12" x 12"
Surface Traction Conforms to:
 ANSI A326.3 Use Category:
 4.1.3 Interior Wet Plus (IW+).



Series: EnviroShop12USA
Color: Carbon Black
Finish: Traction.Brightfinish
Size: 12" x 12"
Surface Traction Conforms to:
 ANSI A326.3 Use Category:
 4.1.3 Interior Wet Plus (IW+).



EnviroShop12usa

smarter, better workshops

Below: actual color varies, example is only representative



Grout: Laticrete Permacolor Select 89 Smoke Grey
Thinset: LHT Plus



MADE IN USA

Below: actual color varies, example is only representative



Grout: Laticrete Permacolor Select 42 Platinum
Thinset: LHT Plus

Below: actual color varies, example is only representative



Grout: Laticrete Permacolor Select 45 Raven
Thinset: LHT Plus

Advantages

1. Our original workshop floor with textured surface.
2. Surface texture is elevated above the surface bed for easier cleaning.
3. Will not permanently stain or darken when properly cleaned.
4. This product has:

slipresistant
 textured floor surfaces

Manufacturer

AutoStoneTRÄ

Product Use Category 4.1.3 Interior, Wet Plus (IW+)

Evaluate for interior use in automotive workshop and service drive environments with high speed doors and tech locker rooms. Enviroshop is medium traction surface. For interior applications, with good drainage. Floors walked on when wet should be level, clean, maintained and free of standing water or other contaminants. Should be cleaned with frequent maintenance to keep clean.

DCOF

Meets and exceeds .50 DCOF rating as required for ANSI A326 4.1.3 (IW+)



Series: DriveSeries12USA
Color: Alloy Grey
Finish: Traction3L.Brightfinish
Size: 12" x 12"
Surface Traction Conforms to:
 ANSI A326.3 Use Category: 4.1.3
 Interior Wet Plus (IW+). 4.1.4
 Exterior Wet (EW).
 4.1.5 Oils/Grease (O/G).

DriveSeries12USA

advanced surface technology

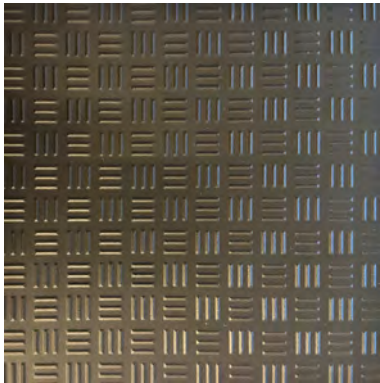


MADE IN USA

Below: actual color varies, example is only representative



Grout: Laticrete Permacolor Select 89 Smoke Grey
Thinset: LHT Plus



Series: DriveSeries12USA
Color: Carbon Black
Finish: Traction3L.Brightfinish
Size: 12" x 12"
Surface Traction Conforms to:
 ANSI A326.3 Use Category: 4.1.3
 Interior Wet Plus (IW+). 4.1.4
 Exterior Wet (EW).
 4.1.5 Oils/Grease (O/G).

Below: actual color varies, example is only representative



Grout: Laticrete Permacolor Select 45 Raven
Thinset: LHT Plus

A permanent enhanced porcelain technology floor system. Elevated traction provides a better surface to manage STF (slip, trip, and fall) risk in your automotive service drive, workshop and tech locker room shower areas. See declared uses below. Should be cleaned with frequent maintenance to keep clean and free of contamination and debris when dealership is operating. Spot spills should be removed immediately and not left on surface. Floor cleaning should include use of de-greasing chemical, floor scrubber sweeper machine with wet vacuum to suck-up dirty water and debris as part of cleaning process.

Advantages

1. Advanced surface technology to better manage STF (slip, trip & fall) risk.
2. Surface has repeating lines elevated above the bed of the tile. Designed for greater foot, shoe-sole traction.
3. Will not permanently stain or darken when properly cleaned.

Manufactured Declared Uses

Evaluate for use in automotive workshop and service drive environments.

4.1.4 (Exterior, Wet) - level outdoor spaces walkways, sidewalks, where such floors may be walked upon when wet (excluding ice or snow) if level, clean, maintained and free of standing water or other contaminants.

4.1.5 (Oils/Greases) - level areas regularly exposed to automotive fluids, etc., so long as such floors are level, regularly cleaned, maintained and free of standing water and contaminant build-up. Consult with your architect to determine dealership practices. **Review ANSI A326.3 2021 standard.**

Declared Product Use & DCOF Requirement

Meets and exceeds .55 DCOF rating as required for ANSI A326.3 4.1.3 Interior Wet Plus (IW+), 4.1.4 Exterior Wet (EW), and 4.1.5 Oils/Grease (O/G).