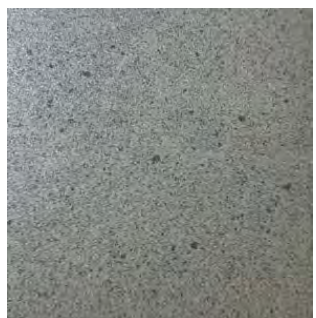




Series: ClinkerShopUSA
Color: Alloy Grey
Finish: Super.Grip.Brightfinish
Size: 4" x 8" x 1/2"
Surface Traction Conforms to:
 ANSI A326.3 Use Category: 4.1.3
 Interior Wet Plus (IW+). 4.1.4
 Exterior Wet (EW).
 4.1.5 Oils/Grease (O/G).

brightfinish
 ultra-cleanable technology



Series: ClinkerShop8USA
Color: Smoke Grey
Finish: Super.Grip.Brightfinish
Size: 4" x 8" x 1/2"
Surface Traction Conforms to:
 ANSI A326.3 Use Category: 4.1.3
 Interior Wet Plus (IW+). 4.1.4
 Exterior Wet (EW).
 4.1.5 Oils/Grease (O/G).

brightfinish
 ultra-cleanable technology

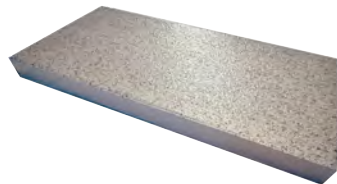


Series: ClinkerShopUSA
Color: Genesis-Carbon Black
Finish: Super.Grip.Brightfinish
Size: 4" x 8" x 1/2"
Surface Traction Conforms to:
 ANSI A326.3 Use Category: 4.1.3
 Interior Wet Plus (IW+). 4.1.4
 Exterior Wet (EW).
 4.1.5 Oils/Grease (O/G).

brightfinish
 ultra-cleanable technology

ClinkerShopUSA

Better technology, better performance, American made.

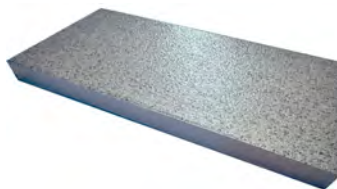


MADE IN USA

Below: actual color varies, example is only representative



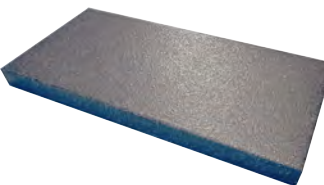
Grout: Laticrete Permacolor Select 78 SterlingSilver
Thinset: LHT Plus



Below: actual color varies, example is only representative



Grout: Laticrete Permacolor Select 42 Platinum
Thinset: LHT Plus



Below: actual color varies, example is only representative



Grout: Laticrete Permacolor Select 60 Dusty Grey
Thinset: LHT Plus

Advantages

1. Advanced surface technology to better manage STF (slip, trip & fall) risk.
2. Surface has Super.Grip surface texture. These nano-granules provide an enhanced surface tension
3. Includes Brightfinish which aids dealers with their cleaning practices. This is a permanent sealant that retards permanent staining and keeps floors in a "like new" appearance.

Manufactured Declared Uses

Evaluate for use in automotive workshop and service drive environments

4.1.4 (Exterior, Wet) - level outdoor spaces walkways, sidewalks, where such floors may be walked upon when wet (excluding ice or snow) if level, clean, maintained and free of standing water or other contaminants.

4.1.5 (Oils/Greases) - level areas regularly exposed to automotive fluids, etc., so long as such floors are level, regularly cleaned, maintained and free of standing water and contaminant build-up. Consult with your architect to determine dealership practices. **Review ANSI A326.3 2021 standard.**

Declared Product Use & DCOF Requirement

Meets and exceeds 55 DCOF rating as required for ANSI A326.3 4.1.3 Exterior Wet.