

Alfa Romeo & Fiat

Tile Guidebook

2025.4 Edition

Tile Series for Alfa Romeo & Fiat

AutoStoneUSA.com



Alfa Romeo



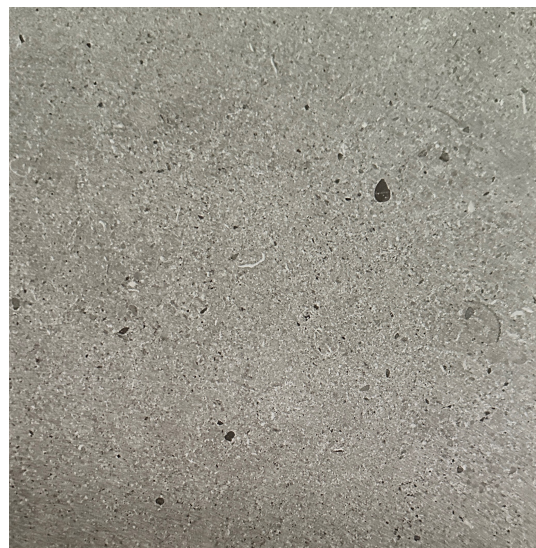
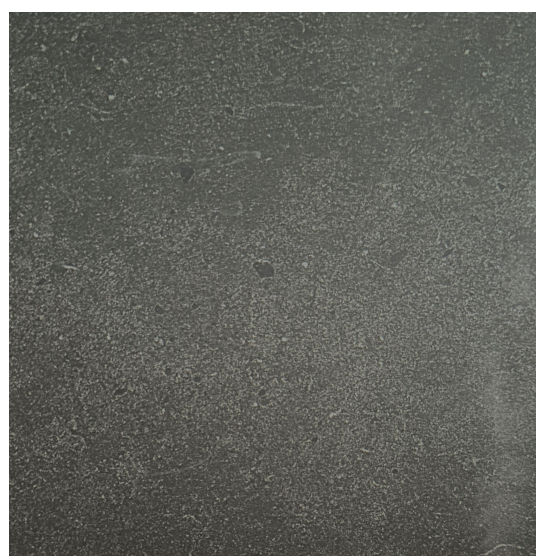
FIAT
PROFESSIONAL



MADE IN AMERICA

AutoStoneUSA.com

© 2025 AutoStone Floor Systems, All Rights Reserved.

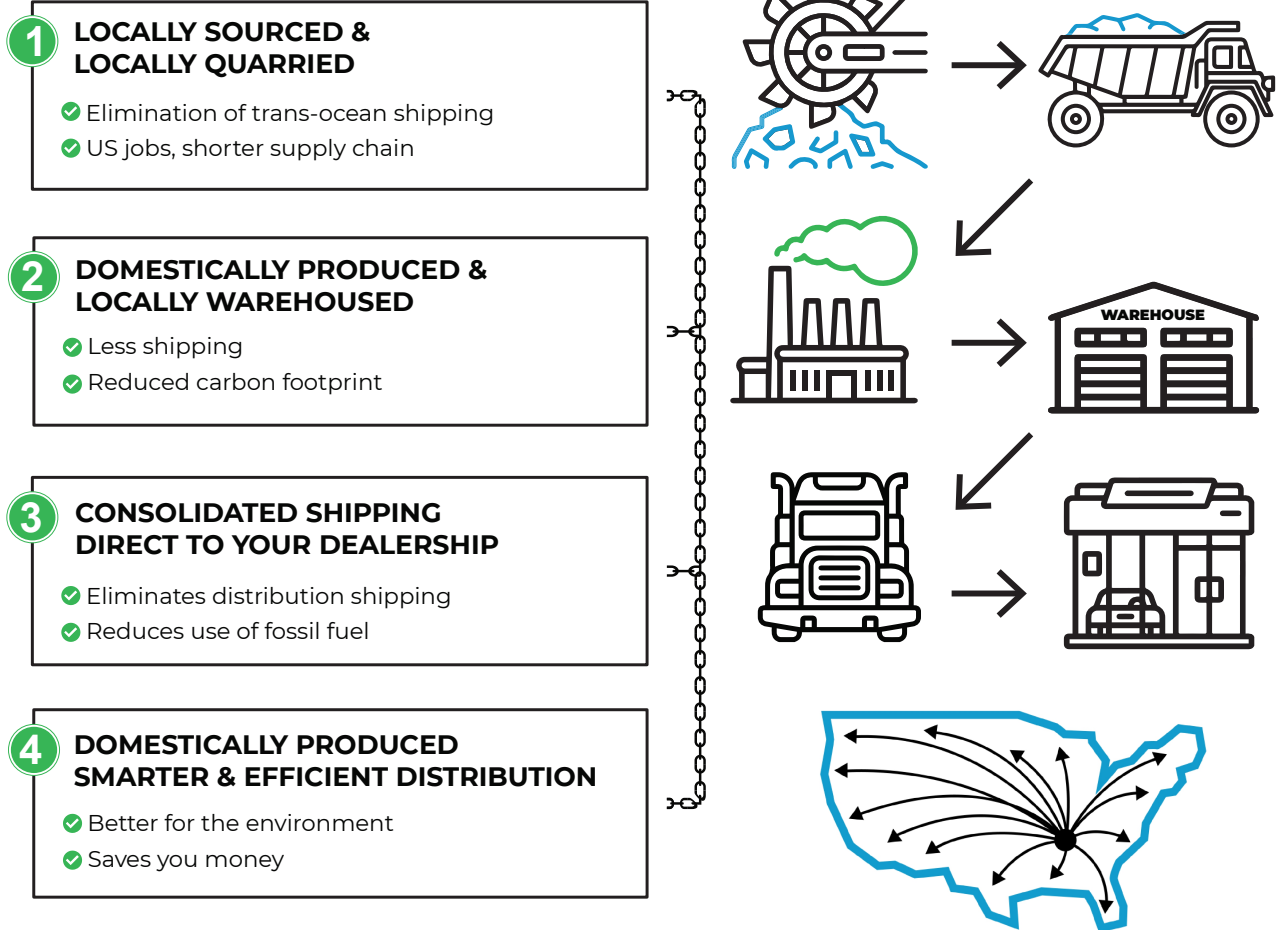


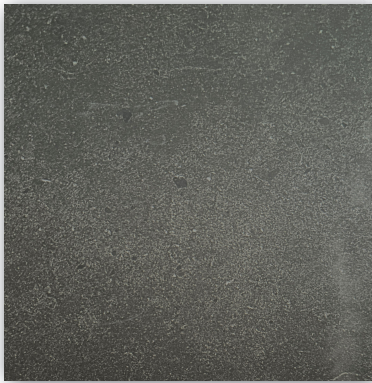
Q2KD

QUARRY TO KILN DISTRIBUTION MODEL



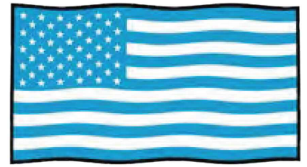
Carbon
Neutral





Alfa Romeo **DNA**

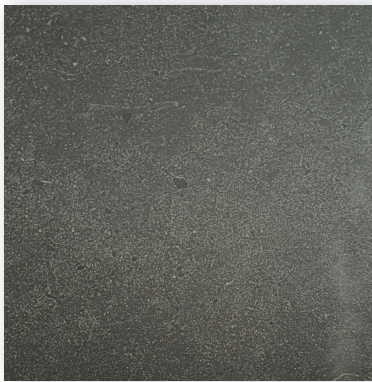
Series: AR51
Color: Nero
Finish: Natural | Matte
Size: 24" x 24" (nominal)
Thickness: 9 mm thick



MADE IN USA



**Carbon
Neutral**



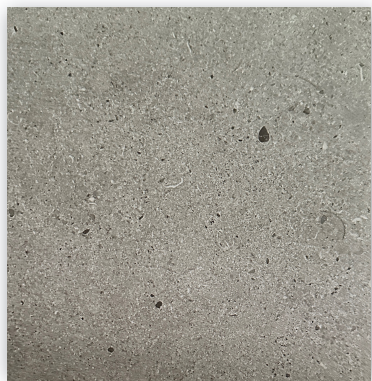
Alfa Romeo **DNA**

Series: AR51
Color: Nero
Finish: Natural | Matte
Size: 32" x 32" (nominal)
Thickness: 9 mm thick



DNA

Series: AR51
Color: Steel
Finish: Natural | Matte
Size: 24" x 24" (nominal)
Thickness: 9 mm thick

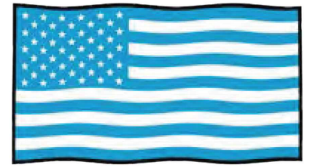


DNA

Series: AR51
Color: Steel
Finish: Natural | Matte
Size: 32" x 32" (nominal)
Thickness: 9 mm thick



Series: WoodPlank (Porcelain tile).
Color: Oak Harvest
Finish: Natural
Size: 08" x 48" (nominal)
Thickness: 9 mm thick



MADE IN USA



**Carbon
Neutral**



Series: WoodPlank (LVT tile).
Color: Ginger Oak
Finish: Natural
Size: 07" x 48" (nominal)
Thickness: 6.5 mm thick



Service Drive & WorkShop

Series: Enviroshop12USA

Color: Smoke Grey

Finish: Traction.Brightfinish

Size: 12" x 12" (U.S. Nominal Dimensions)

Surface Traction Conforms to:

ANSI A326.3 Use Category:

4.1.3 Interior Wet Plus (IW+)

Reference: Granite Titanium

Below: actual color varies, example is only representative

Series: Laticrete Permacolor Select 42 Platinum

Thinset: LHT Plus



brightfinish
ultra-cleanable technology



Service Drive & WorkShop

Series: Enviroshop12USA

Color: Alloy Grey

Finish: Traction.Brightfinish

Size: 12" x 12" (U.S. Nominal Dimensions)

Surface Traction Conforms to:

ANSI A326.3 Use Category:

4.1.3 Interior Wet Plus (IW+)

Reference: Granite Titanium

Below: actual color varies, example is only representative

Series: Laticrete Permacolor Select 89 Smoke Grey

Thinset: 4XLT



brightfinish
ultra-cleanable technology



Service Drive & WorkShop

Series: Enviroshop12USA

Color: Carbon Black

Finish: Traction.Brightfinish

Size: 12" x 12" (U.S. Nominal Dimensions)

Surface Traction Conforms to:

ANSI A326.3 Use Category:

4.1.3 Interior Wet Plus (IW+)

Reference: Granite Carbon

Below: actual color varies, example is only representative

Series: Laticrete Permacolor Select 45 Raven

Thinset: LHT Plus



brightfinish
ultra-cleanable technology

EnviroShop12usa
smarter, better workshops

Manufactured Declared Uses

Evaluate for use in automotive workshop and service drive environments

4.1.3 (Interior Wet Plus) - Covered exterior areas, where such floors may be walked upon when wet if clean, maintained and free of standing water or other contaminants.

Consult with your architect to determine dealership practices.

Review ANSI A326.3 2021 standard.

Declared Product Use & DCOF Requirement

Meets and exceeds .50 DCOF rating as required for ANSI A326.3 4.1.3 Interior Wet Plus (IW+).



Service Drive & WorkShop

Series: DriveSeries12USA

Color: Alloy Grey

Finish: Traction3L.Brightfinish

Size: 12" x 12" (U.S. Nominal Dimensions)

Surface Traction Conforms to:

ANSI A326.3 Use Category:

4.1.3 Interior Wet Plus (IW+)

4.1.4 Exterior Wet (EW)

4.1.5 Oils/Greases (O/G).

Reference: Granite Titanium

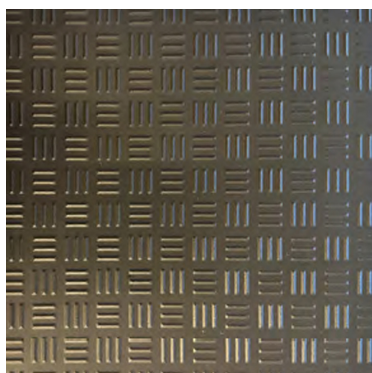
Below: actual color varies, example is only representative

Series: Laticrete Permacolor Select 89 Smoke Grey

Thinset: 4XLT



brightfinish
ultra-cleanable technology



Service Drive & WorkShop

Series: DriveSeries12USA

Color: Carbon Black

Finish: Traction3L.Brightfinish

Size: 12" x 12" (U.S. Nominal Dimensions)

Surface Traction Conforms to:

ANSI A326.3 Use Category:

4.1.3 Interior Wet Plus (IW+)

4.1.4 Exterior Wet (EW)

4.1.5 Oils/Greases (O/G).

Reference: Granite Carbon

Below: actual color varies, example is only representative

Series: Laticrete Permacolor Select 45 Raven

Thinset: LHT Plus



brightfinish
ultra-cleanable technology

Manufactured Declared Uses

Evaluate for use in automotive workshop and service drive environments

4.1.4 (Exterior, Wet) - level outdoor spaces walkways, sidewalks, where such

floors may be walked upon when wet (excluding ice or snow) if level, clean, maintained and free of standing water or other contaminants.

4.1.5 (Oils/Greases) - level areas regularly exposed to automotive fluids, etc., so long as floors are level, regularly cleaned, maintained and free of standing water and contaminant build-up. Consult with your architect to determine dealership practices. **Review ANSI A326.3 2021 standard.**

Declared Product Use & DCOF Requirement

Meets and exceeds .55 DCOF rating as required for ANSI A326.3 4.1.4 Exterior Wet (EW).

DriveSeries12USA
advanced surface technology



Service Drive & WorkShop

Series: DriveSeries08USA

Color: Smoke Grey

Finish: Super.Grip3L.Brightfinish

Size: 8" x 8" (U.S. Nominal Dimensions)

Surface Traction Conforms to:

ANSI A326.3 Use Category:

4.1.3 Interior Wet Plus (IW+)

4.1.4 Exterior Wet (EW)

4.1.5 Oils/Greases (O/G).

Reference: Granite Titanium

Below: actual color varies, example is only representative

Series: Laticrete Permacolor Select 42 Platinum

Thinset: LHT Plus



Service Drive & WorkShop

Series: DriveSeries08USA

Color: Alloy Grey

Finish: Super.Grip3L.Brightfinish

Size: 8" x 8" (U.S. Nominal Dimensions)

Surface Traction Conforms to:

ANSI A326.3 Use Category:

4.1.3 Interior Wet Plus (IW+)

4.1.4 Exterior Wet (EW)

4.1.5 Oils/Greases (O/G).

Reference: Granite Titanium

Below: actual color varies, example is only representative

Series: Laticrete Permacolor 89 Smoke Grey

Thinset: 4XLT



Service Drive & WorkShop

Series: DriveSeries08USA

Color: Carbon/Genesis Black

Finish: Super.Grip3L.Brightfinish

Size: 8" x 8" (U.S. Nominal Dimensions)

Surface Traction Conforms to:

ANSI A326.3 Use Category:

4.1.3 Interior Wet Plus (IW+)

4.1.4 Exterior Wet (EW)

4.1.5 Oils/Greases (O/G).

Reference: Granite Carbon

Below: actual color varies, example is only representative

Series: Laticrete Permacolor Select 45 Raven

Thinset: LHT Plus



**driveseries8
USA**

Manufactured Declared Uses

Evaluate for use in automotive workshop and service drive environments

4.1.4 (Exterior, Wet) - level outdoor spaces walkways, sidewalks, where such floors may be walked upon when wet (excluding ice or snow) if level, clean, maintained and free of standing water or other contaminants.

4.1.5 (Oils/Greases) - level areas regularly exposed to automotive fluids, etc., so long as floors are level, regularly cleaned, maintained and free of standing water and contaminant build-up. Consult with your architect to

determine dealership practices. **Review ANSI A326.3 2021 standard.**

Declared Product Use & DCOF Requirement

Meets and exceeds .55 DCOF rating as required for ANSI A326.3 4.1.4 Exterior Wet (EW).



Service Drive & WorkShop

Series: eShop08USA

Color: Smoke Grey

Finish: Super.Grip.Brightfinish

Size: 8" x 8" (U.S. Nominal Dimensions)

Surface Traction Conforms to:

ANSI A326.3 Use Category:

4.1.3 Interior Wet Plus (IW+)

4.1.4 Exterior Wet (EW)

4.1.5 Oils/Greases (O/G).

Below: actual color varies, example is only representative

Series: Laticrete Permacolor Select 42 Platinum

Thinset: LHT Plus



Service Drive & WorkShop

Series: eShop08USA

Color: Alloy Grey

Finish: Super.Grip.Brightfinish

Size: 8" x 8" (U.S. Nominal Dimensions)

Surface Traction Conforms to:

ANSI A326.3 Use Category:

4.1.3 Interior Wet Plus (IW+)

4.1.4 Exterior Wet (EW)

4.1.5 Oils/Greases (O/G).

Below: actual color varies, example is only representative

Series: Laticrete Permacolor 89 Smoke Grey

Thinset: 4XLT



Service Drive & WorkShop

Series: eShop08USA

Color: Carbon/Genesis Black

Finish: Super.Grip.Brightfinish

Size: 8" x 8" (U.S. Nominal Dimensions)

Surface Traction Conforms to:

ANSI A326.3 Use Category:

4.1.3 Interior Wet Plus (IW+)

4.1.4 Exterior Wet (EW)

4.1.5 Oils/Greases (O/G).

Below: actual color varies, example is only representative

Series: Laticrete Permacolor Select 45 Raven

Thinset: LHT Plus



eShop8usa
better technology, better results

Manufactured Declared Uses

Evaluate for use in automotive workshop and service drive environments

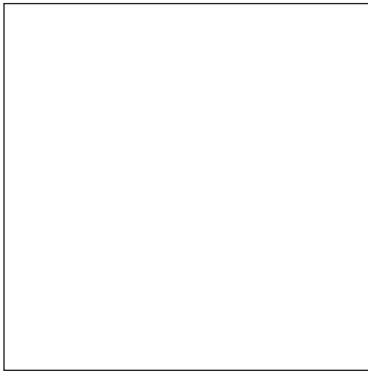
4.1.4 (Exterior, Wet) - level outdoor spaces walkways, sidewalks, where such floors may be walked upon when wet (excluding ice or snow) if level, clean, maintained and free of standing water or other contaminants.

4.1.5 (Oils/Greases) - level areas regularly exposed to automotive fluids, etc., so long as floors are level, regularly cleaned, maintained and free of standing water and contaminant build-up. Consult with your architect to

determine dealership practices. **Review ANSI A326.3 2021 standard.**

Declared Product Use & DCOF Requirement

Meets and exceeds .55 DCOF rating as required for ANSI A326.3 4.1.4 Exterior Wet (EW).



Wall Tile for Tech Locker & Shop Areas

Series: WallTiles!

Color: Simply White

Finish: Satin

Size: 12" x 24" (U.S. Nominal Dimensions)

Below: actual color varies, example is only representative



Series: Laticrete Permacolor Select 44 Bright White

Thinset: 4XLT



Wall Tile for Tech Locker & Shop Areas

Series: WallTiles!

Color: Stormy Grey

Finish: Glossy

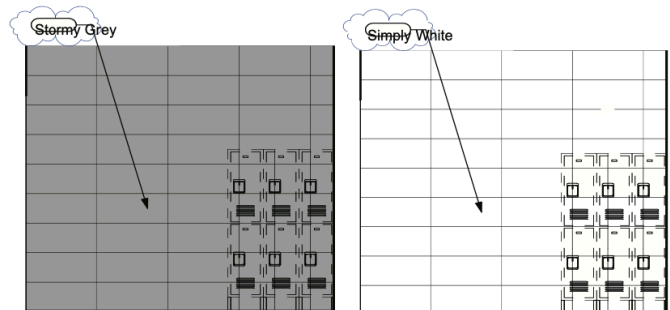
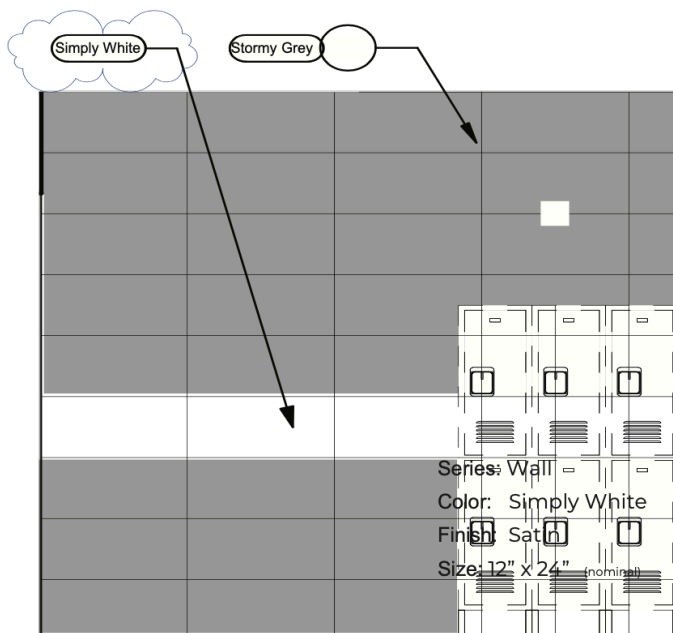
Size: 12" x 24" (U.S. Nominal Dimensions)

Below: actual color varies, example is only representative



Series: Laticrete Permacolor Select 89 Smoke Grey

Thinset: LHT Plus





Wall Tile for Tech Locker & Shop Areas

Series: WallTiles! - Subway

Color: Bright White

Finish: Glossy

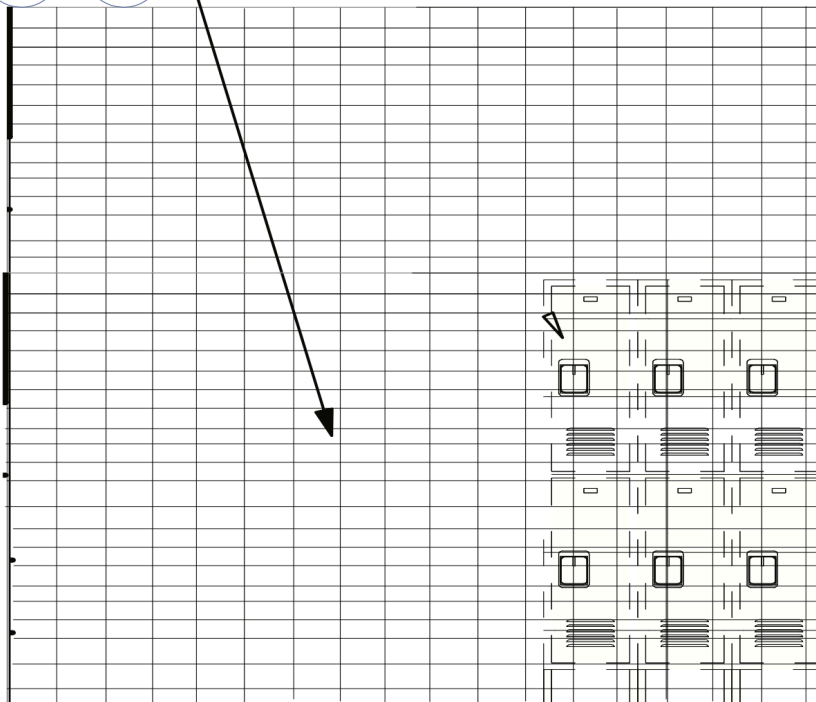
Size: 03" x 06" (U.S. Nominal Dimensions)

Below: actual color varies, example is only representative



Series: Laticrete Permacolor Select 44 Bright White

Thinset: 4XLT





Wall Tile for Tech Locker & Shop Areas

Series: WallTiles!

Color: Granita Grey

Finish: Satin

Size: 08" x 08" (U.S. Nominal Dimensions)

Below: actual color varies, example is only representative



Series: Laticrete Permacolor Select 89 Smoke Grey

Thinset: 4XLT



Wall Tile for Tech Locker & Shop Areas

Series: WallTiles!

Color: Anthracite Grey

Finish: Satin

Size: 08" x 08" (U.S. Nominal Dimensions)

Below: actual color varies, example is only representative


















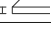
Series: Laticrete Permacolor Select 42 Platinum

Thinset: LHT Plus

Showroom Tile

Technical Specifications

This product meets or exceeds all standards described in ANSI A137.1.

| | SPECS | TEST METHOD | INDUSTRY STANDARD | AUTOSTONE VALUES | |
|---|---|-------------|--|--|------------|
|  | WATER ABSORPTION | ASTM C373 | ≤0.5% | ≤0.4% | |
|  |  | ASTM C373 | 0.5% | Meeting the water absorption criteria of the American national standard PTCA | |
|  | SURFACE WEAR RESISTANCE | ANSI A137.1 | Surface Wear-resistance properties of glazed vitreous and porcelain tiles. | ALL RESIDENTIAL / COMMERCIAL | |
|  | CHEMICAL RESISTANCE | ASTM C650 | A tile sample is placed in continuous contact with a variety of chemicals for 24 hours. No sample must show visible defects. | NOT AFFECTED | |
|  | D.C.O.F. AcuTest® | ANSI A326.3 | ≥0.42 WET | ≥0.42 WET | |
|  | STAIN RESISTANCE | ASTM C1378 | Surfaces are exposed to staining agents for 24 hours followed by four cleaning procedures. Results are recorded post cleaning. | NOT AFFECTED | |
|  | BREAKING STRENGTH | ASTM C648 | ≥250 lbf | 8mm ≥300 lbf 10mm ≥400 lbf | |
|  | RESISTANCE TO FREEZE | ASTM C1026 | A tile sample is subjected to repeated processes of freezing and thawing. Sample must show no visible defects. | RESISTANT | |
|  | WARPAGE EDGE | ASTM C485 | ±0.40% or ±0.05 in (±1.8 mm) | ± 0.40% | Rectified |
|  | WARPAGE DIAGONAL | ASTM C485 | ±0.40% or ±0.07 in (±1.8 mm) | ± 0.40% | Rectified |
|  | WEDGING | ASTM C502 | ±0.25% or ±0.03 in (±0.8 mm) | ± 0.25% | Rectified |
|  | WARPAGE EDGE | ASTM C485 | ±0.50% or ±0.07 in (±1.8 mm) | ± 0.50% | Calibrated |
|  | WARPAGE DIAGONAL | ASTM C485 | ±0.50% or ±0.07 in (±1.8 mm) | ± 0.50% | Calibrated |
|  | WEDGING | ASTM C502 | ±0.50% or ±0.08 in (±2.0 mm) | ± 0.50% | Calibrated |
|  | THICKNESS | ASTM C499 | Range: ± 0.04 in | ≤0.04 in | |

• Due to the inherent nature of fired porcelain tile, it is important to note that the coefficient of friction may vary within and between product runs.

Email: hello@autostoneusa.com

Phone: 214-393-4875 (Main Phone)

Made in the USA.

Our headquarters are in Texas, but we manufacture in Tennessee! Made in the USA assures your project of on-time delivery, quality product, supply chain integrity, and reduced carbon footprint!

Build with AutoStone.

Our program supports Alfa Romeo & Fiat dealers with highest-quality, most affordable and comprehensive floor tile system for your dealership project. Affordable, high-quality, and easy to do business with are what you will experience with AutoStone.

Warranty.

AutoStoneUSA tiles come with a materials warranty which confirms our high-quality product conforms with ANSI porcelain tile standards. If you suspect any tile as not being correct - DO NOT INSTALL IT! Take a picture and send it immediately to your Subaru support team. We will help you right away!

Installation.

AutoStoneUSA has tile installation recommendations with quality control (QC) standards which deliver better results. When you receive your project quote it will include our manufacturer recommended tile installation practices.

Cleaning & Maintenance.

AutoStoneUSA provides detailed and specific tile cleaning and maintenance recommendations. Ask for, or download the Alfa Romeo & Fiat "Culture of Clean" which helps dealers maintain your dealership in a "like new" appearance.

Alfa Romeo & Fiat Brand Info

Website Alfa Romeo: autostoneusa.com/alfaromeo/

Website Fiat: autostoneusa.com/fiat/

Quote Contact Information

Phone Number: **214-393-4875**

Email Alfa Romeo Contact: alfaromeo@autostoneusa.com

Email Fiat Contact: fiat@autostoneusa.com

Dealer, Architectural, CBRE Team, Alfa Romeo & Fiat Contacts: **Rachel Metcalf**, Architectural & Brand Liaison
Lezlie Ferrell, Director of Sales, Sr. Architectural & Brand Liaison



Alfa Romeo

