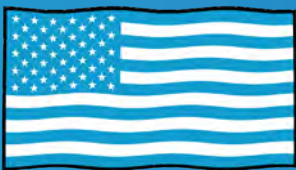


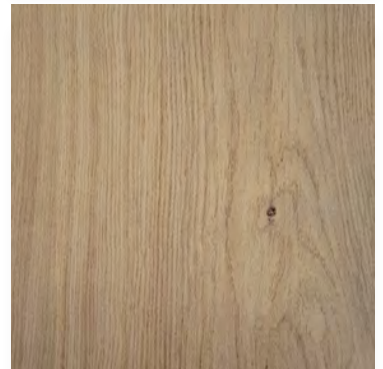
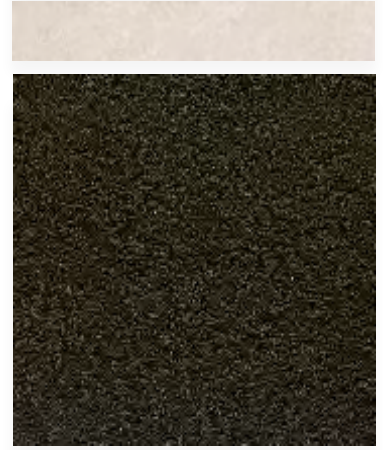


Honda Blue Stage VE Submittal Technical Specifications

2024.11 Edition



MADE IN AMERICA





MADE IN USA



Q2KD



QUARRY TO KILN DISTRIBUTION MODEL

1

LOCALLY SOURCED & LOCALLY QUARRIED

- ✓ Elimination of trans-ocean shipping
- ✓ US jobs, shorter supply chain

2

DOMESTICALLY PRODUCED & LOCALLY WAREHOUSED

- ✓ Less shipping
- ✓ Reduced carbon footprint

3

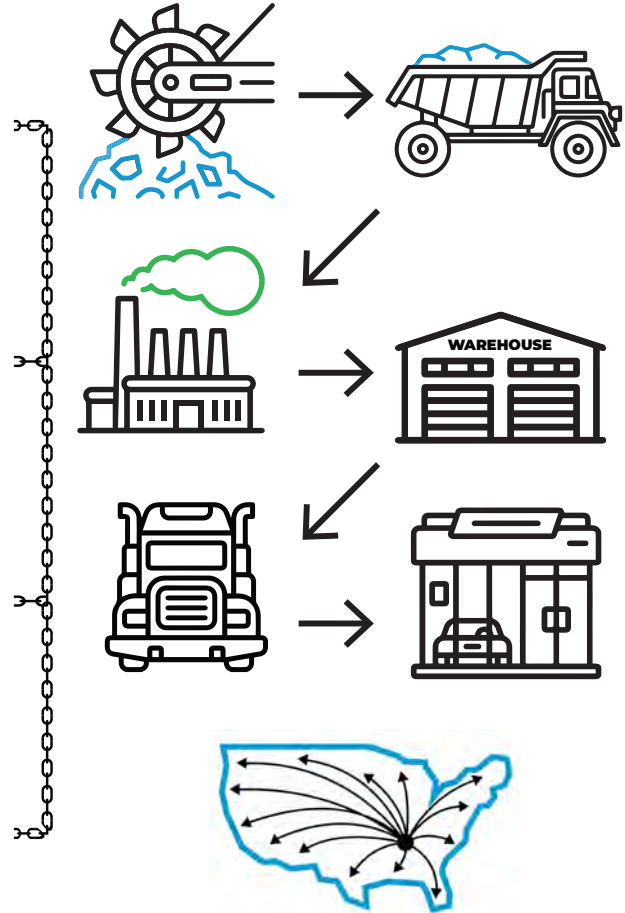
CONSOLIDATED SHIPPING DIRECT TO YOUR DEALERSHIP

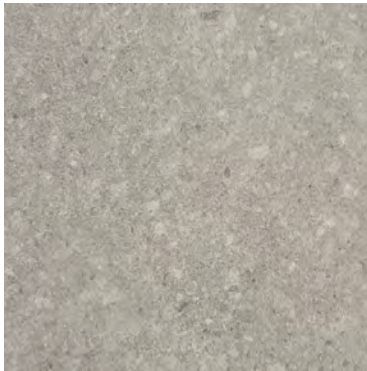
- ✓ Eliminates distribution shipping
- ✓ Reduces use of fossil fuel

4

DOMESTICALLY PRODUCED SMARTER & EFFICIENT DISTRIBUTION

- ✓ Better for the environment
- ✓ Saves you money



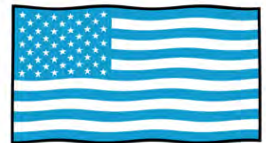


Showroom Tile

Series: Concrete
Color: Smoke
Finish: Natural | Honed
Size: 32" x 32" (U.S. Nominal Dimensions)



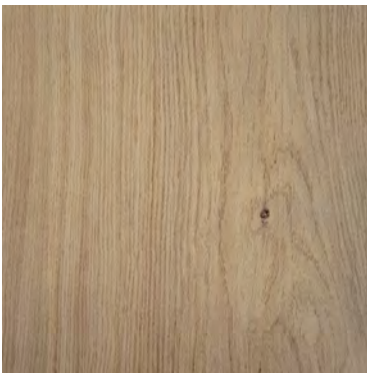
Can ship on same truck with all AutoStoneUSA tile.



USA MANUFACTURED

For use in place of polished concrete and for vehicle display areas and customer restroom.

MUST be submitted to ChangeUp as part of CD REVIEW process.



Showroom Customer Offices Tile

Series: Amberwood Plank
Color: Maple Harvest
Finish: Natural
Size: 8" x 48" (U.S. Nominal Dimensions)

Can ship on same truck with all AutoStoneUSA tile.

For use in place of LVT wood material. This works with the tile shown above and is the same thickness for a seamless connection between these tiles.

MUST be submitted to ChangeUp as part of CD REVIEW process.

Warranty

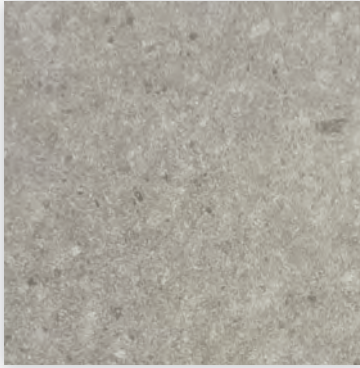
AutoStone offers a tile materials defect warranty. AutoStone offers an installation warranty when warranty services are contracted through AutoStone. Length of Warranty is dependent upon contracted term. AutoStone does not offer any warranty of any kind when a third-party installer is involved except the tile materials defect warranty. AutoStone has put together a unique package of products with Laticrete to provide contractors a 10 year warranty from Laticrete, when you purchase the correct materials directly through AutoStone. See *Warranties on our website for specifics.*

Build with AutoStone

Our program supports Kia dealers with the highest quality, most affordable and comprehensive floor tile system for your dealership project. Affordable, high-quality, and easy to do business with are what you will experience with AutoStone. Call us today to support your project.

Installation

See AutoStone recommended 09300 specifications for thinset standards on concrete substrate and AutoStone recommended installation standards.



Showroom Tile

Series: Concrete
Color: Smoke
Finish: Natural | Honed
Size: 32" x 32" (nominal)

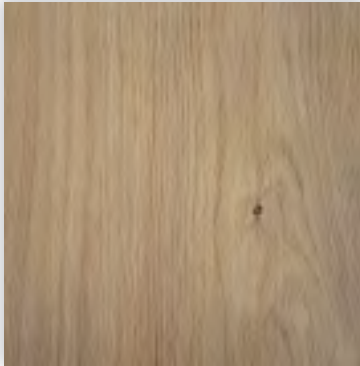


Technical Specifications

This product meets or exceeds all standards described in ANSI A137.1.

	SPECS	TEST METHOD	INDUSTRY STANDARD	AUTOSTONE VALUES	
	WATER ABSORPTION	ASTM C373	≤0.5%	≤0.4%	
	CERTIFIED PORCELAIN™ TILE <small>0.5% or less water absorption</small>	ASTM C373	0.5%	Meeting the water absorption criteria of the American national standard PTCA	
	SURFACE WEAR RESISTANCE	ANSI A137.1	Surface Wear-resistance properties of glazed vitreous and porcelain tiles.	ALL RESIDENTIAL / COMMERCIAL	
	CHEMICAL RESISTANCE	ASTM C650	A tile sample is placed in continuous contact with a variety of chemicals for 24 hours. No sample must show visible defects.	NOT AFFECTED	
	D.C.O.F. AcuTest®	ANSI A326.3	≥0.42 WET	≥0.42 WET	
	STAIN RESISTANCE	ASTM C1378	Surfaces are exposed to staining agents for 24 hours followed by four cleaning procedures. Results are recorded post cleaning.	NOT AFFECTED	
	BREAKING STRENGTH	ASTM C648	≥250 lbf	8mm ≥300 lbf 10mm ≥400 lbf	
	RESISTANCE TO FREEZE	ASTM C1026	A tile sample is subjected to repeated processes of freezing and thawing. Sample must show no visible defects.	RESISTANT	
	WARPAGE EDGE	ASTM C485	±0.40% or ±0.05 in (±1.8 mm)	± 0.40%	Rectified
	WARPAGE DIAGONAL	ASTM C485	±0.40% or ±0.07 in (±1.8 mm)	± 0.40%	Rectified
	WEDGING	ASTM C502	±0.25% or ±0.03 in (±0.8 mm)	± 0.25%	Rectified
	WARPAGE EDGE	ASTM C485	±0.50% or ±0.07 in (±1.8 mm)	± 0.50%	Calibrated
	WARPAGE DIAGONAL	ASTM C485	±0.50% or ±0.07 in (±1.8 mm)	± 0.50%	Calibrated
	WEDGING	ASTM C502	±0.50% or ±0.08 in (±2.0 mm)	± 0.50%	Calibrated
	THICKNESS	ASTM C499	Range: ± 0.04 in	≤0.04 in	

• Due to the inherent nature of fired porcelain tile, it is important to note that the coefficient of friction may vary within and between product runs.



Showroom Tile

Series: Amberwood Plank
Color: Maple Harvest
Finish: Natural
Size: 08" x 48" (nominal)



Technical Specifications

This product meets or exceeds all standards described in ANSI A137.1.

	SPECS	TEST METHOD	INDUSTRY STANDARD	AUTOSTONE VALUES	
	WATER ABSORPTION	ASTM C373	≤0.5%	≤0.4%	
	CERTIFIED PORCELAIN TILE <small>0.5% or less water absorption</small>	ASTM C373	0.5%	Meeting the water absorption criteria of the American national standard PTCA	
	SURFACE WEAR RESISTANCE	ANSI A137.1	Surface Wear-resistance properties of glazed vitreous and porcelain tiles.	ALL RESIDENTIAL / COMMERCIAL	
	CHEMICAL RESISTANCE	ASTM C650	A tile sample is placed in continuous contact with a variety of chemicals for 24 hours. No sample must show visible defects.	NOT AFFECTED	
	D.C.O.F. AcuTest®	ANSI A326.3	≥0.42 WET	≥0.42 WET	
	STAIN RESISTANCE	ASTM C1378	Surfaces are exposed to staining agents for 24 hours followed by four cleaning procedures. Results are recorded post cleaning.	NOT AFFECTED	
	BREAKING STRENGTH	ASTM C648	≥250 lbf	8mm ≥300 lbf 10mm ≥400 lbf	
	RESISTANCE TO FREEZE	ASTM C1026	A tile sample is subjected to repeated processes of freezing and thawing. Sample must show no visible defects.	RESISTANT	
	WARPAGE EDGE	ASTM C485	±0.40% or ±0.05 in (±1.8 mm)	± 0.40%	Rectified
	WARPAGE DIAGONAL	ASTM C485	±0.40% or ±0.07 in (±1.8 mm)	± 0.40%	Rectified
	WEDGING	ASTM C502	±0.25% or ±0.03 in (±0.8 mm)	± 0.25%	Rectified
	WARPAGE EDGE	ASTM C485	±0.50% or ±0.07 in (±1.8 mm)	± 0.50%	Calibrated
	WARPAGE DIAGONAL	ASTM C485	±0.50% or ±0.07 in (±1.8 mm)	± 0.50%	Calibrated
	WEDGING	ASTM C502	±0.50% or ±0.08 in (±2.0 mm)	± 0.50%	Calibrated
	THICKNESS	ASTM C499	Range: ± 0.04 in	≤0.04 in	

• Due to the inherent nature of fired porcelain tile, it is important to note that the coefficient of friction may vary within and between product runs.



ShowroomTile

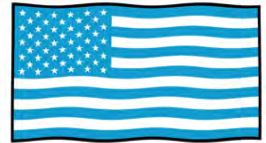
Code: T-2
Series: Blue Stage
Color: Ivory
Finish: Natural | Honed
Size: 12" x 24" (PRESSED edges | U.S. Nominal Dimensions)



Can ship on same truck as all AutoStoneUSA tile.

VE alternate to Mosa Tile - Solid 5102-V.

MUST be submitted to ChangeUp as part of CD REVIEW process.



USA MANUFACTURED



Showroom Tile

Code: T-1
Series: Blue Stage
Color: MidNight Sky
Finish: Natural | Honed
Size: 12" x 24" and 24" x 24" (PRESSED EDGES | U.S. Nominal Dimensions)



Can ship on same truck as all AutoStoneUSA tile.

VE alternate to Mosa Tile - Solid 5112-V.

MUST be submitted to ChangeUp as part of CD REVIEW process.

Warranty

AutoStone offers a tile materials defect warranty. AutoStone offers an installation warranty when warranty services are contracted through AutoStone. Length of Warranty is dependent upon contracted term. AutoStone does not offer any warranty of any kind when a third-party installer is involved except the tile materials defect warranty. AutoStone has put together a unique package of products with Laticrete to provide contractors a 10 year warranty from Laticrete, when you purchase the correct materials directly through AutoStone. See *Warranties on our website for specifics.*

Build with AutoStone

Our program supports Kia dealers with the highest quality, most affordable and comprehensive floor tile system for your dealership project. Affordable, high-quality, and easy to do business with are what you will experience with AutoStone. Call us today to support your project.

Installation

See AutoStone recommended 09300 specifications for thinset standards on concrete substrate and AutoStone recommended installation standards.



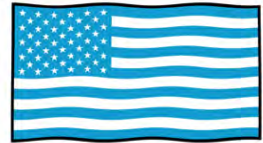
Wall Tile

Code: T-2
 Series: Blue Stage
 Color: Sea Pearl
 Finish: Natural | Honed
 Size: 12" x 24" (RECTIFIED EDGES | U.S. Nominal Dimensions)

Can ship on same truck with all AutoStoneUSA tile.

VE alternate to Mosa Tile - Solid 5102-V.

MUST be submitted to ChangeUp as part of CD REVIEW process.



USA MANUFACTURED



Wall Tile

Code: T-1
 Series: Blue Stage
 Color: Metro Black
 Finish: Natural | Honed
 Size: 12" x 24" and 24" x 24" (RECTIFIED EDGES | U.S. Nominal Dimensions)

Can ship on same truck with all AutoStoneUSA tile.

VE alternate to Mosa Tile - Solid 5112-V.

MUST be submitted to ChangeUp as part of CD REVIEW process.

Warranty

AutoStone offers a tile materials defect warranty. AutoStone offers an installation warranty when warranty services are contracted through AutoStone. Length of Warranty is dependent upon contracted term. AutoStone does not offer any warranty of any kind when a third-party installer is involved except the tile materials defect warranty. AutoStone has put together a unique package of products with Laticrete to provide contractors a 10 year warranty from Laticrete, when you purchase the correct materials directly through AutoStone. See *Warranties on our website for specifics*.

Build with AutoStone

Our program supports Kia dealers with the highest quality, most affordable and comprehensive floor tile system for your dealership project. Affordable, high-quality, and easy to do business with are what you will experience with AutoStone. Call us today to support your project.

Installation

See AutoStone recommended 09300 specifications for thinset standards on concrete substrate and AutoStone recommended installation standards.

Honda Showroom VE Tile Guide - Technical Specifications 08



ShowroomTile

Code: T-2
 Series: Blue Stage
 Color: Ivory
 Finish: Natural | Honed
 Size: 12" x 24" (RECTIFIED EDGES | U.S. Nominal Dimensions)



Wall Tile

Code: T-2
 Series: Blue Stage
 Color: Sea Pearl
 Finish: Natural | Honed
 Size: 12" x 24" (RECTIFIED EDGES | U.S. Nominal Dimensions)

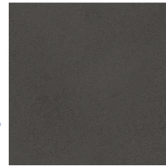


**USA
 MANUFACTURED**



Showroom Tile

Code: T-1
 Series: Blue Stage
 Color: MidNight Sky
 Finish: Natural | Honed
 Size: 12" x 24" and 24" x 24" (RECTIFIED EDGES | U.S. Nominal Dimensions)



Wall Tile

Code: T-1
 Series: Blue Stage
 Color: Metro Black
 Finish: Natural | Honed
 Size: 12" x 24" and 24" x 24" (RECTIFIED EDGES | U.S. Nominal Dimensions)

VE alternate to Mosa Tile - Solid 5112-V. VE alternate to Mosa Tile - Solid 5102-V.

MUST be submitted to ChangeUp as part of CD REVIEW process.

Technical Specifications

This product meets or exceeds all standards described in ANSI A137.1.

	SPECS	TEST METHOD	INDUSTRY STANDARD	AUTOSTONE VALUES	
	WATER ABSORPTION	ASTM C373	≤0.5%	≤0.4%	
	CERTIFIED PORCELAIN™ TILE <small>0.5% or less water absorption</small>	ASTM C373	0.5%	Meeting the water absorption criteria of the American national standard PTCA	
	SURFACE WEAR RESISTANCE	ANSI A137.1	Surface Wear-resistance properties of glazed vitreous and porcelain tiles.	ALL RESIDENTIAL / COMMERCIAL	
	CHEMICAL RESISTANCE	ASTM C650	A tile sample is placed in continuous contact with a variety of chemicals for 24 hours. No sample must show visible defects.	NOT AFFECTED	
	D.C.O.F. AcuTest®	ANSI A326.3	≥0.42 WET	≥0.42 WET	
	STAIN RESISTANCE	ASTM C1378	Surfaces are exposed to staining agents for 24 hours followed by four cleaning procedures. Results are recorded post cleaning.	NOT AFFECTED	
	BREAKING STRENGTH	ASTM C648	≥250 lbf	8mm ≥300 lbf 10mm ≥400 lbf	
	RESISTANCE TO FREEZE	ASTM C1026	A tile sample is subjected to repeated processes of freezing and thawing. Sample must show no visible defects.	RESISTANT	
	WARPAGE EDGE	ASTM C485	±0.40% or ±0.05 in (±1.8 mm)	± 0.40%	Rectified
	WARPAGE DIAGONAL	ASTM C485	±0.40% or ±0.07 in (±1.8 mm)	± 0.40%	Rectified
	WEDGING	ASTM C502	±0.25% or ±0.03 in (±0.8 mm)	± 0.25%	Rectified
	WARPAGE EDGE	ASTM C485	±0.50% or ±0.07 in (±1.8 mm)	± 0.50%	Calibrated
	WARPAGE DIAGONAL	ASTM C485	±0.50% or ±0.07 in (±1.8 mm)	± 0.50%	Calibrated
	WEDGING	ASTM C502	±0.50% or ±0.08 in (±2.0 mm)	± 0.50%	Calibrated
	THICKNESS	ASTM C499	Range: ± 0.04 in	≤0.04 in	

• Due to the inherent nature of fired porcelain tile, it is important to note that the coefficient of friction may vary within and between product runs.



MADE IN USA

enviroshop
smarter, better workshops



Smoke Grey

12" x 12"*



Alloy Grey

12" x 12"*



Carbon Black

12" x 12"*

NEW SIZING (2024): 12" x 12" (*U.S. Nominal Dimension) = 11^{5/8"} x 11^{5/8"}. Actual Size: **295 mm x 295 mm**. This is a rectified tile.

Sizing

Enviroshop is a rectified tile which means that every tile is precisely cut for exact size dimension. This allows for tighter grout joints due to tile size consistency. Even with rectification precision, tiles dimensions may vary within **(+) or (-) 1 mm** in sizing. This is within ANSI A137.1 and TCNA (Tile Council of North America) standards compliance. 1 mm = 0.03937" or approximately 1/16" or 3/64" in fractional sizing.

Surface

Enviroshop is medium traction surface. For interior wet applications, with good drainage. Can be used for floors walked on when wet if level, clean, maintained and free of standing water or other contaminants. Should be cleaned with frequent maintenance to keep clean and free of contamination and debris when dealership is operating. To best manage STF (slip, trip, and fall) risk, spills and chemicals should be spot cleaned immediately and not left on surface. Floor cleaning should include use of de-greasing chemical, floor scrubber sweeper machine with wet vacuum to suck-up dirty water and debris as part of cleaning process. Service drive environments should have a high-speed vehicle access door to control exposure to exterior environment.

Description

A permanent enhanced porcelain technology floor tile and system for use in automotive workshop and climate controlled service drive environments. For interior environments only.

Advantages

1. Our original workshop floor with textured surface.
2. Surface texture is elevated above the surface bed for easier cleaning.
3. Will not permanently stain or darken when properly cleaned.
4. This product has:

slipresistant
textured floor surfaces

Manufacturer

AutoStoneUSA

Product Use Category 4.1.3 Interior, Wet Plus (IW+)

Evaluate for interior use in automotive workshop and service drive environments with high speed doors and tech locker rooms. Enviroshop is medium traction surface. For interior applications, with good drainage. Floors walked on when wet should be level, clean, maintained and free of standing water or other contaminants. Should be cleaned with frequent maintenance to keep clean.

DCOF

Meets and exceeds .50 DCOF rating as required for ANSI A326 4.1.3 (IW+)



Alloy Grey

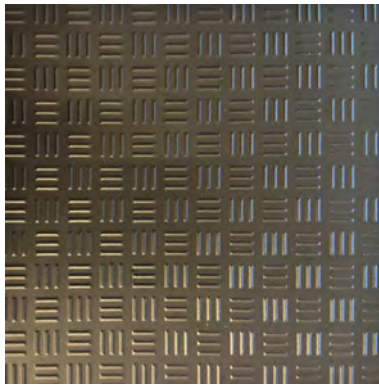
Series: DriveSeriesUSA
Color: Alloy Grey
Finish: SLR Shop Textured
Size: 12" x 12" (nominal size)



Below: actual color varies, example is only representative



Grout: Laticrete Permacolor 89 Smoke Grey
Thinset: LHT Plus



Genesis-Carbon Black

Series: DriveSeriesUSA
Color: Genesis-Carbon Black
Finish: SLR Shop Textured
Size: 12" x 12" (nominal size)



Below: actual color varies, example is only representative



Grout: Laticrete Permacolor Select 45 Raven
Thinset: LHT Plus

Description

A permanent enhanced porcelain technology floor system. Elevated traction provides a better surface to manage STF (slip, trip, and fall) risk in your automotive service drive, workshop and tech locker room shower areas. See declared uses below. Should be cleaned with frequent maintenance to keep clean and free of contamination and debris when dealership is operating. Spot spills should be removed immediately and not left on surface. Floor cleaning should include use of de-greasing chemical, floor scrubber sweeper machine with wet vacuum to suck-up dirty water and debris as part of cleaning process.

Advantages

1. Advanced surface technology to better manage STF (slip, trip & fall) risk.
2. Surface has repeating lines elevated above the bed of the tile. Designed for greater foot, shoe-sole traction.
3. Will not permanently stain or darken when properly cleaned.

Manufactured Declared Uses

Evaluate for use in automotive workshop and service drive environments.

4.1.4 (Exterior, Wet) - level outdoor spaces walkways, sidewalks, where such floors may be walked upon when wet (excluding ice or snow) if level, clean, maintained and free of standing water or other contaminants.

4.1.5 (Oils/Greases) - level areas regularly exposed to automotive fluids, etc., so long as such floors are level, regularly cleaned, maintained and free of standing water and contaminant build-up. Consult with your architect to determine dealership practices. **Review ANSI A326.3 2021 standard.**

Declared Product Use & DCOF Requirement

Meets and exceeds .55 DCOF rating as required for ANSI A326.3 4.1.3 Interior Wet Plus (IW+), 4.1.4 Exterior Wet (EW), and 4.1.5 Oils/Grease (O/G).



Series: EnviroShop12USA
Color: Alloy Grey
Finish: Traction.Brightfinish

Size: 12" x 12"

Surface Traction Conforms to:
ANSI A326.3 Use Category: 4.1.3
Interior Wet Plus (IW+).

brightfinish
ultra-cleanable technology



Series: DriveSeries12USA
Color: Alloy Grey

Finish: Traction3L.Brightfinish

Size: 12" x 12"

Surface Traction Conforms to:
ANSI A326.3 Use Category: 4.1.3
Interior Wet Plus (IW+), 4.1.4
Exterior Wet (EW),
4.1.5 Oils/Grease (O/G).

brightfinish
ultra-cleanable technology



Series: EnviroShop12USA
Color: Smoke Grey
Finish: Traction.Brightfinish
Size: 12" x 12"

Surface Traction Conforms to:
ANSI A326.3 Use Category:
4.1.3 Interior Wet Plus (IW+).

brightfinish
ultra-cleanable technology



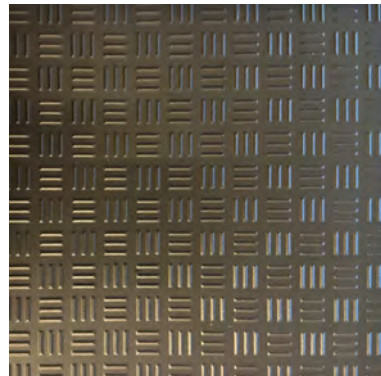
NO DriveSeries12USA
Smoke Grey
Currently Available



Series: EnviroShop12USA
Color: Carbon Black
Finish: Traction.Brightfinish
Size: 12" x 12"

Surface Traction Conforms to:
ANSI A326.3 Use Category:
4.1.3 Interior Wet Plus (IW+).

brightfinish
ultra-cleanable technology



Series: DriveSeries12USA
Color: Carbon Black

Finish: Traction3L.Brightfinish

Size: 12" x 12"

Surface Traction Conforms to:
ANSI A326.3 Use Category:
4.1.3 Interior Wet Plus (IW+),
4.1.4 Exterior Wet (EW),
4.1.5 Oils/Grease (O/G).

brightfinish
ultra-cleanable technology





F-8 Alloy Grey

Series: eShop2USA

Color: Alloy Grey

Finish: SLR Shop Textured

Size: (U.S. Nominal Dimensions)

8" x 8" and 12" x 12"

eshop2usa
better technology. better results



Below: actual color varies, example is only representative



Grout: Laticrete Permacolor 78 Sterling Silver

Thinset: LHT Plus



F-8 Genesis-Carbon Black

Series: eShop2USA

Color: Genesis-Carbon Black

Finish: SLR Shop Textured

Size: (U.S. Nominal Dimensions)

8" x 8" and 12" x 12"

eshop2usa
better technology. better results



Below: actual color varies, example is only representative



Grout: Laticrete Permacolor Select 60 Dusty Grey

Thinset: LHT Plus

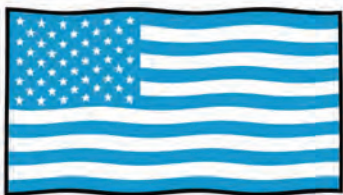
eshop2usa
better technology, better results

Material Availability

MADE IN USA

Product stocked in USA warehouse

1 week preparation + ground shipping



Easy to work with,
helpful, & supportive



The MOST
affordable tile choice!



Alloy Grey

Series: DriveSeriesUSA
Color: Alloy Grey
Finish: SLR Shop Textured
Size: 8" x 8" (nominal size)



drive series USA



Smoke Grey

Series: DriveSeriesUSA
Color: Smoke Grey
Finish: SLR Shop Textured
Size: 8" x 8" (nominal size)



Genesis-Carbon Black

Series: DriveSeriesUSA
Color: Genesis-Carbon Black
Finish: SLR Shop Textured
Size: 8" x 8" (nominal size)



Advantages

1. Advanced surface technology to better manage STF (slip, trip & fall) risk.
2. Surface has repeating lines elevated above the bed of the tile. Designed for greater foot, shoe-sole traction.
3. Will not permanently stain or darken when properly cleaned.

Manufactured Declared Uses

Evaluate for use in automotive workshop and service drive environments
4.1.4 (Exterior, Wet) - level outdoor spaces walkways, sidewalks, where such floors may be walked upon when wet (excluding ice or snow) if level, clean, maintained and free of standing water or other contaminants.
4.1.5 (Oils/Greases) - level areas regularly exposed to automotive fluids, etc., so long as such floors are level, regularly cleaned, maintained and free of standing water and contaminant build-up. Consult with your architect to determine dealership practices. **Review ANSI A326.3 2021 standard.**

Declared Product Use & DCOF Requirement

Meets and exceeds 55 DCOF rating as required for ANSI A326.3 4.1.3 Exterior Wet.



Series: eShop08USA
Color: Alloy Grey
Finish: Super.Grip.Brightfinish
Size: 8" x 8"

Surface Traction Conforms to:
ANSI A326.3 Use Category: 4.1.3
Interior Wet Plus (IW+). 4.1.4
Exterior Wet (EW).
4.1.5 Oils/Grease (O/G).



Series: DriveSeries08USA
Color: Alloy Grey
Finish: Super.Grip3L.Brightfinish
Size: 8" x 8"

Surface Traction Conforms to:
ANSI A326.3 Use Category: 4.1.3
Interior Wet Plus (IW+). 4.1.4
Exterior Wet (EW).
4.1.5 Oils/Grease (O/G).



Series: eShop08USA
Color: Smoke Grey
Finish: Super.Grip.Brightfinish
Size: 8" x 8"

Surface Traction Conforms to:
ANSI A326.3 Use Category: 4.1.3
Interior Wet Plus (IW+). 4.1.4
Exterior Wet (EW).
4.1.5 Oils/Grease (O/G).



Series: DriveSeries08USA
Color: Smoke Grey
Finish: Super.Grip3L.Brightfinish
Size: 8" x 8"

Surface Traction Conforms to:
ANSI A326.3 Use Category: 4.1.3
Interior Wet Plus (IW+). 4.1.4
Exterior Wet (EW).
4.1.5 Oils/Grease (O/G).



Series: eShop08TRÅ
Color: Carbon/Genesis Black
Finish: Super.Grip.Brightfinish
Size: 8" x 8"

Surface Traction Conforms to:
ANSI A326.3 Use Category: 4.1.3
Interior Wet Plus (IW+). 4.1.4
Exterior Wet (EW).
4.1.5 Oils/Grease (O/G).



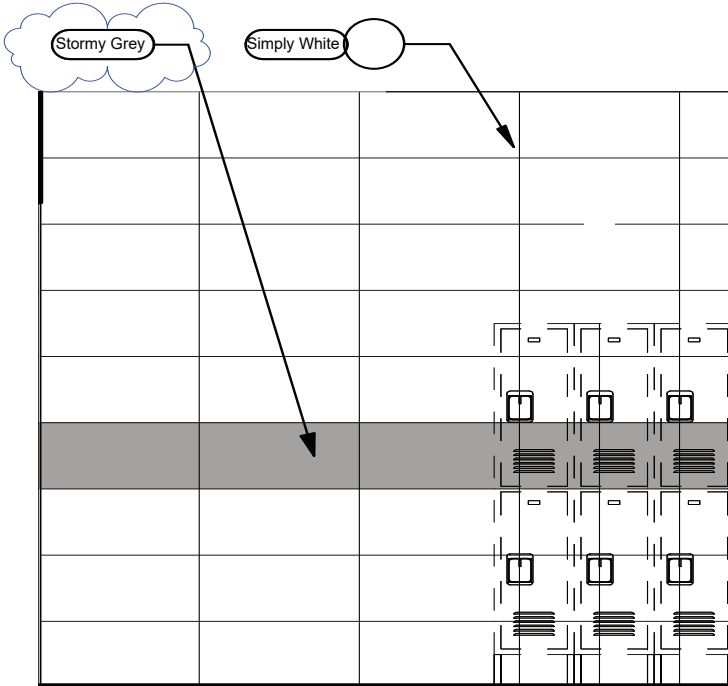
Series: DriveSeries08TRÅ
Color: Carbon/Genesis Black
Finish: Super.Grip3L.Brightfinish
Size: 8" x 8"

Surface Traction Conforms to:
ANSI A326.3 Use Category: 4.1.3
Interior Wet Plus (IW+). 4.1.4
Exterior Wet (EW).
4.1.5 Oils/Grease (O/G).



ShopWalls!

12" x 24" Series Modern Lines



Restroom & Tech Walls

ShopWalls! provides automotive retail & service environments an affordable and attractive wall tile material designed for these specific environments.

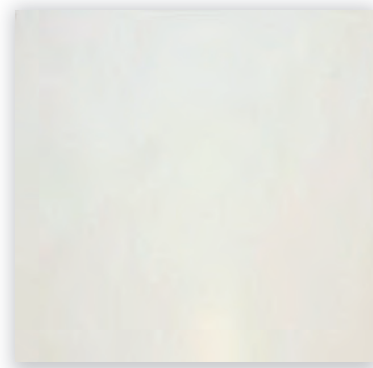
This larger format (12" x 24") tile minimizes grout lines while creating a modern and attractive environment for your service techs. Rectified edges for precise & tight grout joint alignment.

Benefits includes wall surfaces that are easy to clean so they are maintained in a "like-new" appearance.

Pricing is affordable and these materials can ship with other AutoStone materials to reduce freight costs.

Affordable, available, and designed for your tech walls! All materials ship together to reduce repetitive fossil fuel use.

No supply chain challenges or delivery delays.

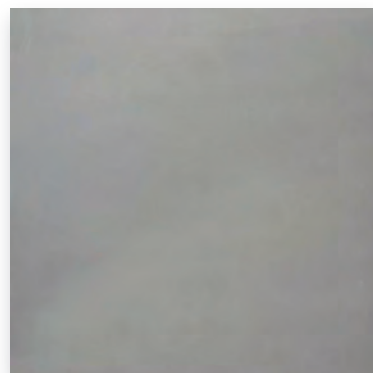


Restroom & Tech Walls

Color: Simply White

Finish: Satin

Size: 12" x 24" (nominal)



Restroom & Tech Walls

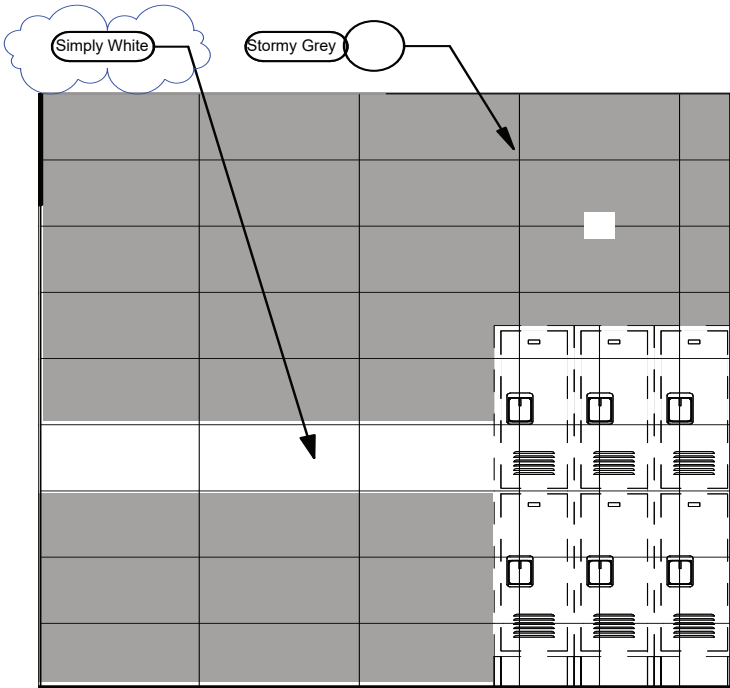
Color: Stormy Grey

Finish: Glossy

Size: 12" x 24" (nominal)

ShopWalls!

12" x 24" Series Modern Lines

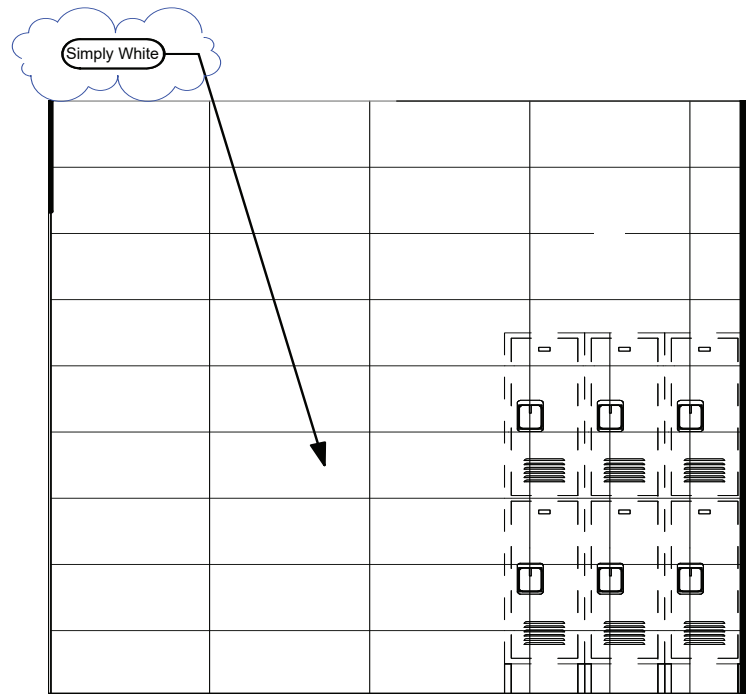
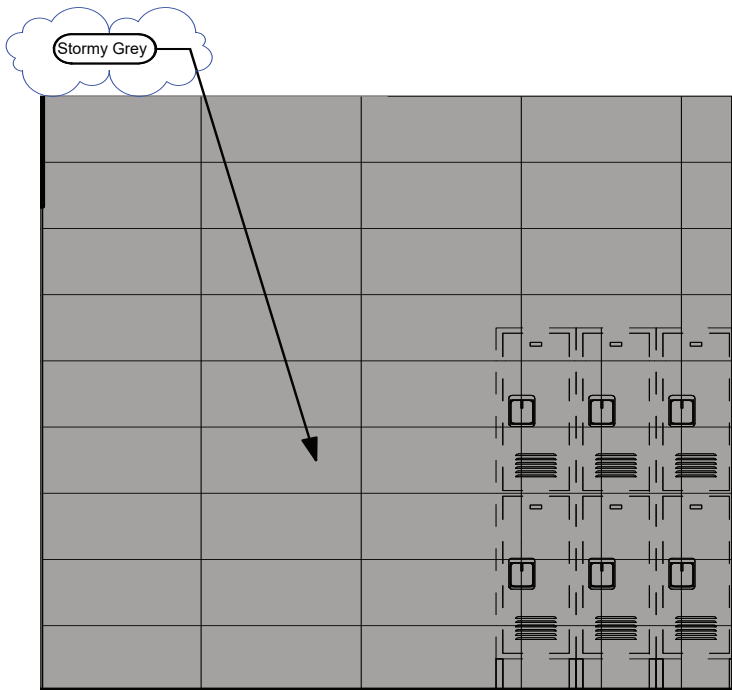


Restroom & Tech Walls

ShopWalls! have rectified edges for precise tile alignment and tight grout joints.

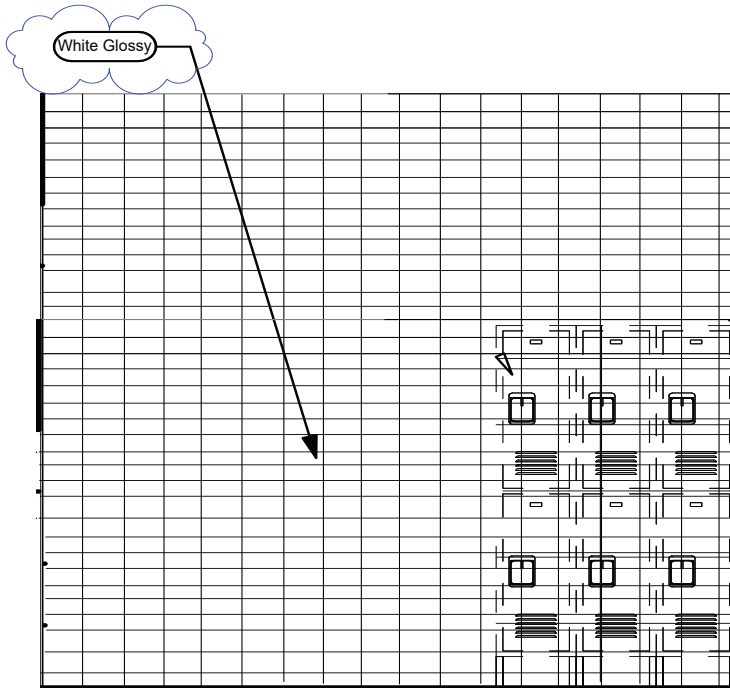
Both colors are the exact size and are designed as a system to support your wet wall, locker room wall environment needs.

Affordable, available and the right choice for your automotive project.



ShopWalls!

03" x 06" Subway Series



Restroom & Tech Walls

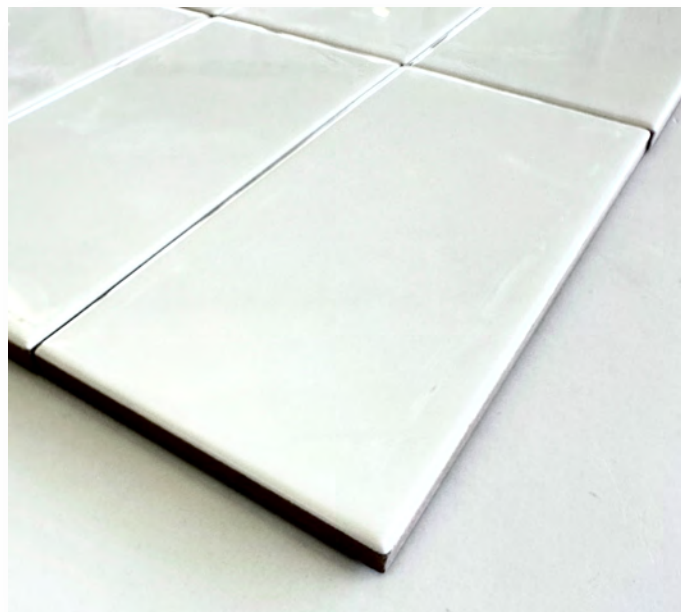
ShopWalls! provides automotive retail & service environments an affordable and attractive wall tile material designed for these specific environments.

This subway series format (03" x 06") tile creates an attractive environment for your service techs. Soft profile edge enhances the design profile of this series.

Pricing is affordable and these materials can ship with other AutoStone materials to reduce freight costs, fossil fuel use and reduces carbon footprint through consolidated supply and shipping.

Affordable, available, and designed for your tech walls! All materials ship together to reduce repetitive fossil fuel use.

No supply chain challenges or delivery delays.



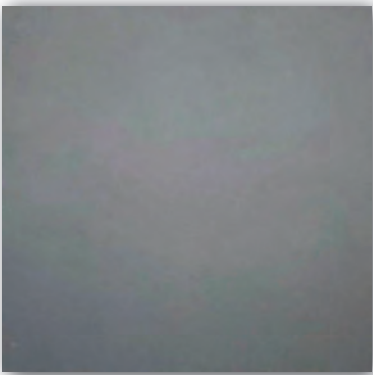
Subway Tile for Restroom & Tech Walls

Color: White
Finish: Glossy
Size: 03" x 06" (nominal)



Service & Tech Restroom Areas Wall Tile

Series: ShopWall!
Color: Granita Grey
Finish: Satin
Size: 8" X 8" U.S. Nominal Dimensions .



Service & Tech Restroom Areas Wall Tile

Series: ShopWall!
Color: Anthracite Grey
Finish: Satin
Size: 8" X 8" U.S. Nominal Dimensions .

Warranty

See website for AutoStoneUSA materials warranty.

Build with AutoStone

Our program supports automotive dealers with the highest quality, most affordable and comprehensive floor tile system for your dealership project. Affordable, high-quality, and easy to do business with are what you will experience with AutoStone.

Call us today to support your project.

Installation

See AutoStone recommended 09300 specifications for thinset standards on concrete substrate and AutoStone recommended installation standards. **See AutoStone for IMPORTANT installation recommendations.**

AutoStoneUSA Support

AutoStone has a team that supports your automotive project.

If your call is not answered immediately, you will receive a return call no later than one business day.

All emails are monitored and will be responded to quickly.

We are here to support your project!

Email: hello@autostoneusa.com
jasper@autostoneusa.com

Call: 214-393-4875 (m)