

**autostone**  
floor systems

**CDJR+**

# American Boss Tile Guidebook

*2024.7 Edition*

---

Tile Series for CDJR

[AutoStoneUSA.com](http://AutoStoneUSA.com)



**RAM**



**MADE IN AMERICA**

[AutoStoneUSA.com](http://AutoStoneUSA.com)

© 2024 AutoStone Floor Systems, All Rights Reserved.



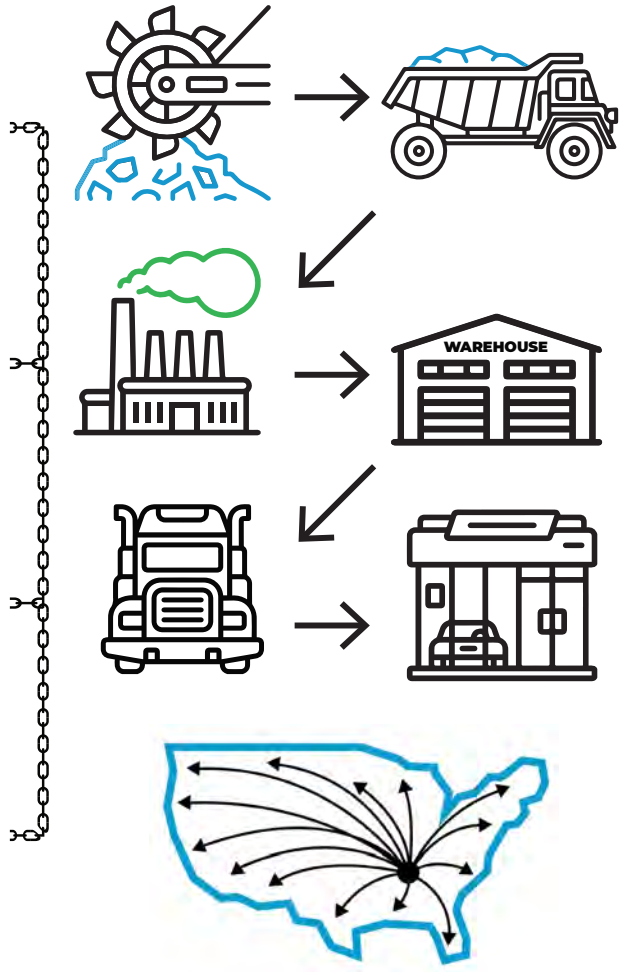
# Q2KD



Carbon Neutral

## QUARRY TO KILN DISTRIBUTION MODEL

- 1** **LOCALLY SOURCED & LOCALLY QUARRIED**
  - ✓ Elimination of trans-ocean shipping
  - ✓ US jobs, shorter supply chain
- 2** **DOMESTICALLY PRODUCED & LOCALLY WAREHOUSED**
  - ✓ Less shipping
  - ✓ Reduced carbon footprint
- 3** **CONSOLIDATED SHIPPING DIRECT TO YOUR DEALERSHIP**
  - ✓ Eliminates distribution shipping
  - ✓ Reduces use of fossil fuel
- 4** **DOMESTICALLY PRODUCED SMARTER & EFFICIENT DISTRIBUTION**
  - ✓ Better for the environment
  - ✓ Saves you money





## American Boss

**Color:** Detroit Steel  
**Finish:** Lapatto | Semi Polished  
**Size:** 24" x 24" (nominal)  
**Thickness:** 8 mm thick

**Reference:** Alfalux Titanium - Lapatto



**Carbon  
Neutral**



## American Boss

**Color:** Detroit Steel  
**Finish:** Matte | Natural  
**Size:** 12" x 24" (nominal)  
**Thickness:** 8 mm thick

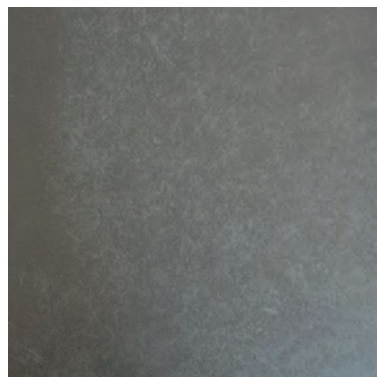
**Reference:** Alfalux Titanium - Matte | Natural



## American Boss

**Color:** Muscle Metal  
**Finish:** Lapatto | Semi Polished  
**Size:** 24" x 24" (nominal)  
**Thickness:** 8 mm thick

**Reference:** Alfalux Carbon - Lapatto



## American Boss

**Color:** Muscle Metal  
**Finish:** Matte | Natural  
**Size:** 12" x 24" (nominal)  
**Thickness:** 8 mm thick

**Reference:** Alfalux Carbon - Matte | Natural



## Service Drive & WorkShop

**Series:** Enviroshop12USA  
**Color:** Smoke Grey  
**Finish:** Traction.Brightfinish  
**Size:** 12" x 12" (U.S. Nominal Dimensions)  
**Surface Traction Conforms to:**  
ANSI A326.3 Use Category:  
4.1.3 Interior Wet Plus (IW+)

**Reference:** Granite Titanium

Below: actual color varies, example is only representative



**Series:** Laticrete Permacolor Select 42 Platinum  
**Thinset:** LHT Plus



## Service Drive & WorkShop

**Series:** Enviroshop12USA  
**Color:** Alloy Grey  
**Finish:** Traction.Brightfinish  
**Size:** 12" x 12" (U.S. Nominal Dimensions)  
**Surface Traction Conforms to:**  
ANSI A326.3 Use Category:  
4.1.3 Interior Wet Plus (IW+)

**Reference:** Granite Titanium

Below: actual color varies, example is only representative



**Series:** Laticrete Permacolor Select 89 Smoke Grey  
**Thinset:** 4XLT



## Service Drive & WorkShop

**Series:** Enviroshop12USA  
**Color:** Carbon Black  
**Finish:** Traction.Brightfinish  
**Size:** 12" x 12" (U.S. Nominal Dimensions)  
**Surface Traction Conforms to:**  
ANSI A326.3 Use Category:  
4.1.3 Interior Wet Plus (IW+)

**Reference:** Granite Carbon

Below: actual color varies, example is only representative



**Series:** Laticrete Permacolor Select 45 Raven  
**Thinset:** LHT Plus



### Manufactured Declared Uses

Evaluate for use in automotive workshop and service drive environments  
**4.1.3 (Interior Wet Plus)** - Covered exterior areas, where such floors may be walked upon when wet if clean, maintained and free of standing water or other contaminants.

Consult with your architect to determine dealership practices.

**Review ANSI A326.3 2021 standard.**

### Declared Product Use & DCOF Requirement

Meets and exceeds .50 DCOF rating as required for ANSI A326.3 4.1.3 Interior Wet Plus (IW+).



## Service Drive & WorkShop

**Series:** DriveSeries12USA

**Color:** Alloy Grey

**Finish:** Traction3L.Brightfinish

**Size:** 12" x 12" (U.S. Nominal Dimensions)

**Surface Traction Conforms to:**

ANSI A326.3 Use Category:

4.1.3 Interior Wet Plus (IW+)

4.1.4 Exterior Wet (EW)

4.1.5 Oils/Greases (O/G).

**Reference:** Granite Titanium

Below: actual color varies, example is only representative

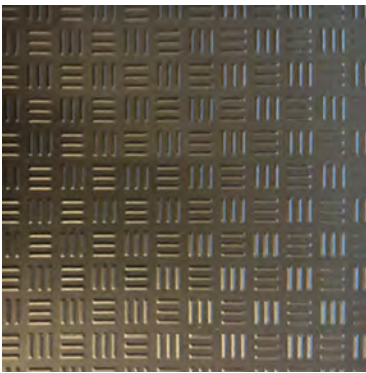


**Series:** Laticrete Permacolor Select 89 Smoke Grey

**Thinset:** 4XLT



**brightfinish**  
ultra-cleanable technology



## Service Drive & WorkShop

**Series:** DriveSeries12USA

**Color:** Carbon Black

**Finish:** Traction3L.Brightfinish

**Size:** 12" x 12" (U.S. Nominal Dimensions)

**Surface Traction Conforms to:**

ANSI A326.3 Use Category:

4.1.3 Interior Wet Plus (IW+)

4.1.4 Exterior Wet (EW)

4.1.5 Oils/Greases (O/G).

**Reference:** Granite Carbon

Below: actual color varies, example is only representative



**Series:** Laticrete Permacolor Select 45 Raven

**Thinset:** LHT Plus



**brightfinish**  
ultra-cleanable technology

### Manufactured Declared Uses

Evaluate for use in automotive workshop and service drive environments

**4.1.4 (Exterior, Wet)** - level outdoor spaces walkways, sidewalks, where such floors may be walked upon when wet (excluding ice or snow) if level, clean, maintained and free of standing water or other contaminants.

**4.1.5 (Oils/Greases)** - level areas regularly exposed to automotive fluids, etc., so long as floors are level, regularly cleaned, maintained and free of standing water and contaminant build-up. Consult with your architect to determine dealership practices. **Review ANSI A326.3 2021 standard.**

### Declared Product Use & DCOF Requirement

Meets and exceeds .55 DCOF rating as required for ANSI A326.3 4.1.4 Exterior Wet (EW).



## Service Drive & WorkShop

**Series:** DriveSeries08USA  
**Color:** Smoke Grey  
**Finish:** Super.Grip3L.Brightfinish  
**Size:** 8" X 8" (U.S. Nominal Dimensions)  
**Surface Traction Conforms to:**  
 ANSI A326.3 Use Category:  
 4.1.3 Interior Wet Plus (IW+)  
 4.1.4 Exterior Wet (EW)  
 4.1.5 Oils/Greaseses (O/G).

**Reference:** Granite Titanium

Below: actual color varies, example is only representative



**Series:** Laticrete Permacolor Select 42 Platinum  
**Thinset:** LHT Plus



## Service Drive & WorkShop

**Series:** DriveSeries08USA  
**Color:** Alloy Grey  
**Finish:** Super.Grip3L.Brightfinish  
**Size:** 8" X 8" (U.S. Nominal Dimensions)  
**Surface Traction Conforms to:**  
 ANSI A326.3 Use Category:  
 4.1.3 Interior Wet Plus (IW+)  
 4.1.4 Exterior Wet (EW)  
 4.1.5 Oils/Greaseses (O/G).

**Reference:** Granite Titanium

Below: actual color varies, example is only representative



**Series:** Laticrete Permacolor 89 Smoke Grey  
**Thinset:** 4XLT



## Service Drive & WorkShop

**Series:** DriveSeries08USA  
**Color:** Carbon/Genesis Black  
**Finish:** Super.Grip3L.Brightfinish  
**Size:** 8" X 8" (U.S. Nominal Dimensions)  
**Surface Traction Conforms to:**  
 ANSI A326.3 Use Category:  
 4.1.3 Interior Wet Plus (IW+)  
 4.1.4 Exterior Wet (EW)  
 4.1.5 Oils/Greaseses (O/G).

**Reference:** Granite Carbon

Below: actual color varies, example is only representative



**Series:** Laticrete Permacolor Select 45 Raven  
**Thinset:** LHT Plus



**driveseries  
USA**

### Manufactured Declared Uses

Evaluate for use in automotive workshop and service drive environments

**4.1.4 (Exterior, Wet)** - level outdoor spaces walkways, sidewalks, where such floors may be walked upon when wet (excluding ice or snow) if level, clean, maintained and free of standing water or other contaminants.

**4.1.5 (Oils/Greases)** - level areas regularly exposed to automotive fluids, etc., so long as floors are level, regularly cleaned, maintained and free of standing water and contaminant build-up. Consult with your architect to

determine dealership practices. **Review ANSI A326.3 2021 standard.**

### Declared Product Use & DCOF Requirement

Meets and exceeds .55 DCOF rating as required for ANSI A326.3 4.1.4 Exterior Wet (EW).



## Service Drive & WorkShop

**Series:** eShop08USA

**Color:** Smoke Grey

**Finish:** Super.Grip.Brightfinish

**Size:** 8" X 8" (U.S. Nominal Dimensions)

**Surface Traction Conforms to:**

- ANSI A326.3 Use Category:
- 4.1.3 Interior Wet Plus (IW+)
- 4.1.4 Exterior Wet (EW)
- 4.1.5 Oils/Greaseses (O/G).

Below: actual color varies, example is only representative



**Series:** Laticrete Permacolor Select 42 Platinum

**Thinset:** LHT Plus



## Service Drive & WorkShop

**Series:** eShop08USA

**Color:** Alloy Grey

**Finish:** Super.Grip.Brightfinish

**Size:** 8" X 8" (U.S. Nominal Dimensions)

**Surface Traction Conforms to:**

- ANSI A326.3 Use Category:
- 4.1.3 Interior Wet Plus (IW+)
- 4.1.4 Exterior Wet (EW)
- 4.1.5 Oils/Greaseses (O/G).

Below: actual color varies, example is only representative



**Series:** Laticrete Permacolor 89 Smoke Grey

**Thinset:** 4XLT



## Service Drive & WorkShop

**Series:** eShop08USA

**Color:** Carbon/Genesis Black

**Finish:** Super.Grip.Brightfinish

**Size:** 8" X 8" (U.S. Nominal Dimensions)

**Surface Traction Conforms to:**

- ANSI A326.3 Use Category:
- 4.1.3 Interior Wet Plus (IW+)
- 4.1.4 Exterior Wet (EW)
- 4.1.5 Oils/Greaseses (O/G).

Below: actual color varies, example is only representative



**Series:** Laticrete Permacolor Select 45 Raven

**Thinset:** LHT Plus



**eshop2usa**  
better technology, better results

### Manufactured Declared Uses

Evaluate for use in automotive workshop and service drive environments

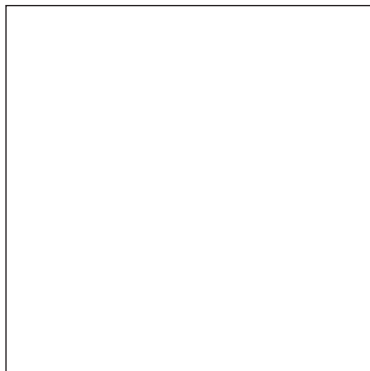
**4.1.4 (Exterior, Wet)** - level outdoor spaces walkways, sidewalks, where such floors may be walked upon when wet (excluding ice or snow) if level, clean, maintained and free of standing water or other contaminants.

**4.1.5 (Oils/Greases)** - level areas regularly exposed to automotive fluids, etc., so long as floors are level, regularly cleaned, maintained and free of standing water and contaminant build-up. Consult with your architect to

determine dealership practices. **Review ANSI A326.3 2021 standard.**

### Declared Product Use & DCOF Requirement

Meets and exceeds .55 DCOF rating as required for ANSI A326.3 4.1.4 Exterior Wet (EW).



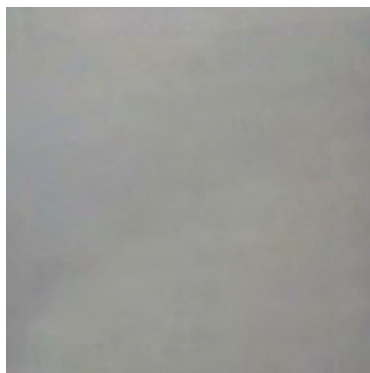
## Wall Tile for Tech Locker & Shop Areas

**Series:** WallTiles!  
**Color:** Simply White  
**Finish:** Satin  
**Size:** 12" x 24" (U.S. Nominal Dimensions)

Below: actual color varies, example is only representative



**Series:** Laticrete Permacolor Select 44 Bright White  
**Thinset:** 4XLT



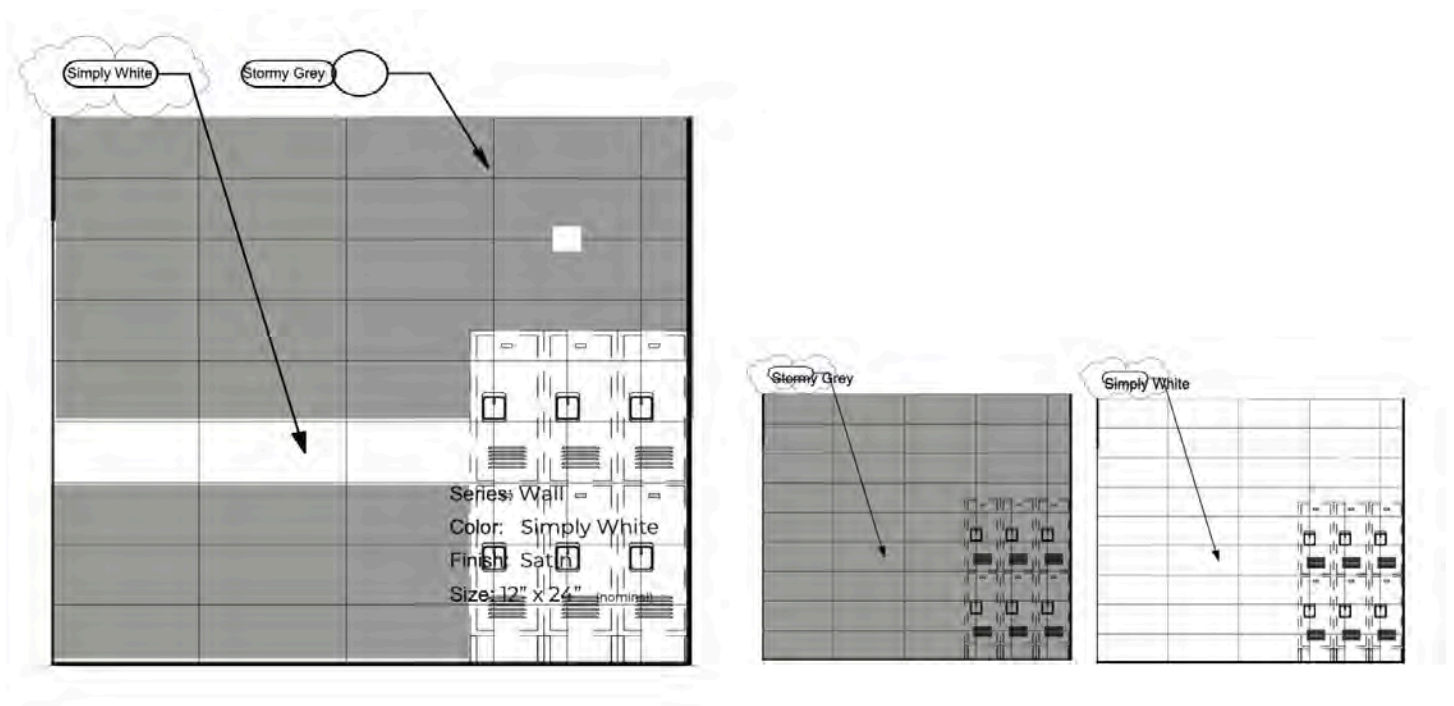
## Wall Tile for Tech Locker & Shop Areas

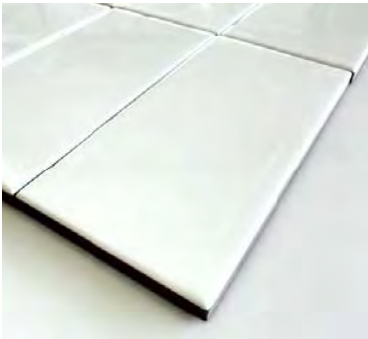
**Series:** WallTiles!  
**Color:** Stormy Grey  
**Finish:** Glossy  
**Size:** 12" x 24" (U.S. Nominal Dimensions)

Below: actual color varies, example is only representative



**Series:** Laticrete Permacolor Select 89 Smoke Grey  
**Thinset:** LHT Plus





# Wall Tile for Tech Locker & Shop Areas

**Series:** WallTiles! - Subway

**Color:** Bright White

**Finish:** Glossy

**Size:** 03" x 06" (U.S. Nominal Dimensions)

Below: actual color varies, example is only representative

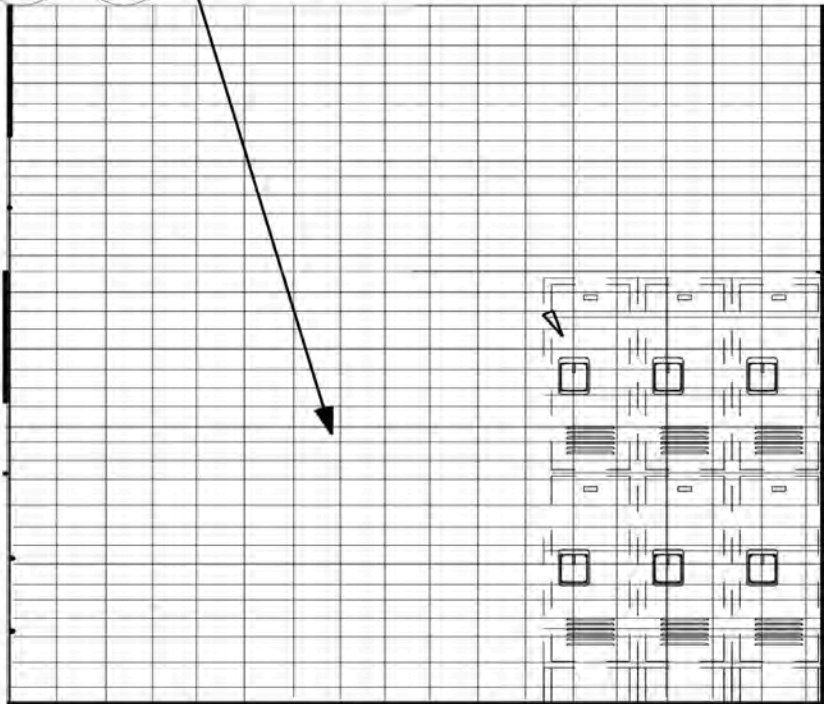


**Series:** Laticrete Permacolor Select 44 Bright White

**Thinset:** 4XLT



White Glossy





## Wall Tile for Tech Locker & Shop Areas

**Series:** WallTiles!

**Color:** Granita Grey

**Finish:** Satin

**Size:** 08" x 08" (U.S. Nominal Dimensions)

Below: actual color varies, example is only representative



**Series:** Laticrete Permacolor Select 89 Smoke Grey

**Thinset:** 4XLT



## Wall Tile for Tech Locker & Shop Areas

**Series:** WallTiles!

**Color:** Anthracite Grey

**Finish:** Satin

**Size:** 08" x 08" (U.S. Nominal Dimensions)

Below: actual color varies, example is only representative














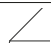

**Series:** Laticrete Permacolor Select 42 Platinum

**Thinset:** LHT Plus

# Showroom Tile

## Technical Specifications

This product meets or exceeds all standards described in ANSI A137.1.

	SPECS	TEST METHOD	INDUSTRY STANDARD	AUTOSTONE VALUES	
	WATER ABSORPTION	ASTM C373	≤0.5%	≤0.4%	
	<b>CERTIFIED PORCELAIN TILE</b> <small>0.5% or less water absorption</small>	ASTM C373	0.5%	Meeting the water absorption criteria of the American national standard PTCA	
	SURFACE WEAR RESISTANCE	ANSI A137.1	Surface Wear-resistance properties of glazed vitreous and porcelain tiles.	ALL RESIDENTIAL / COMMERCIAL	
	CHEMICAL RESISTANCE	ASTM C650	A tile sample is placed in continuous contact with a variety of chemicals for 24 hours. No sample must show visible defects.	NOT AFFECTED	
	D.C.O.F. AcuTest®	ANSI A326.3	≥0.42 WET	≥0.42 WET	
	STAIN RESISTANCE	ASTM C1378	Surfaces are exposed to staining agents for 24 hours followed by four cleaning procedures. Results are recorded post cleaning.	NOT AFFECTED	
	BREAKING STRENGTH	ASTM C648	≥250 lbf	8mm ≥300 lbf	
	RESISTANCE TO FREEZE	ASTM C1026	A tile sample is subjected to repeated processes of freezing and thawing. Sample must show no visible defects.	RESISTANT	
	WARPAGE EDGE	ASTM C485	±0.40% or ±0.05 in (±1.8 mm)	± 0.40%	Rectified
	WARPAGE DIAGONAL	ASTM C485	±0.40% or ±0.07 in (±1.8 mm)	± 0.40%	Rectified
	WEDGING	ASTM C502	±0.25% or ±0.03 in (±0.8 mm)	± 0.25%	Rectified
	WARPAGE EDGE	ASTM C485	±0.50% or ±0.07 in (±1.8 mm)	± 0.50%	Calibrated
	WARPAGE DIAGONAL	ASTM C485	±0.50% or ±0.07 in (±1.8 mm)	± 0.50%	Calibrated
	WEDGING	ASTM C502	±0.50% or ±0.08 in (±2.0 mm)	± 0.50%	Calibrated
	THICKNESS	ASTM C499	Range: ± 0.04 in	≤0.04 in	

• Due to the inherent nature of fired porcelain tile, it is important to note that the coefficient of friction may vary within and between product runs.

### Contact Information

**Email:** [hello@autostoneusa.com](mailto:hello@autostoneusa.com)  
**Phone:** 214-393-4875 (Main Phone)

### Made in the USA.

Our headquarters are in Texas, but we manufacture in Tennessee! Made in the USA assures your project of on-time delivery, quality product, supply chain integrity, and reduced carbon footprint!

### Build with AutoStone.

Our program supports Subaru dealers with highest-quality, most affordable and comprehensive floor tile system for your dealership project. Affordable, high-quality, and easy to do business with are what you will experience with AutoStone.

### Warranty.

AutoStoneUSA tiles come with a materials warranty which confirms our high-quality product conforms with ANSI porcelain tile standards. If you suspect any tile as not being correct - DO NOT INSTALL IT! Take a picture and send it immediately to your Subaru support team. We will help you right away!

### Installation.

AutoStoneUSA has tile installation recommendations with quality control (QC) standards which deliver better results. When you receive your project quote it will include our manufacturer recommended tile installation practices.

### Cleaning & Maintenance.

AutoStoneUSA provides detailed and specific tile cleaning and maintenance recommendations. Ask for, or download the Subaru "Culture of Clean" which helps dealers maintain your dealership in a "like new" appearance.

### Subaru Brand Info:

**Website:** [AutoStoneUSA.com](http://AutoStoneUSA.com)  
**Email:** [cdjr@autostoneusa.com](mailto:cdjr@autostoneusa.com)

**Request For Quote Info:** **CDJR Line:** 214-393-4875

### Contact Information:

**Aaron Standley & Barry Wells**  
[cdjr@autostoneusa.com](mailto:cdjr@autostoneusa.com)  
[aaron@autostoneusa.com](mailto:aaron@autostoneusa.com)  
[barry@autostoneusa.com](mailto:barry@autostoneusa.com)  
**Aaron:** 214-393-4868  
**Barry:** 214-393-4862  
**Main:** 214-393-4875

