

AUTOSTONEUSA IS YOUR BEST CT-1 TILE CHOICE

Why the AutoStoneUSA CT-1 tile choice is the best solution! The following lays out the reasons that we think you will appreciate AutoStoneUSA for your Subaru CT-1 tile. Dealership owners prefer larger tiles in their retail environments. These preferences are what drives our design approach and final product.

- **Car dealers dislike grout lines.**

Fewer grout lines are preferred, therefore larger tiles are preferred.

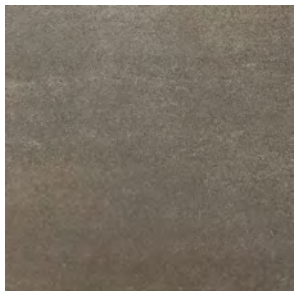
Thinner grout lines are preferred, therefore rectified tiles are preferred over pressed, or calibrated tiles.

- **Car dealers want tiles that are easier to clean and maintain in a “like-new” condition.**

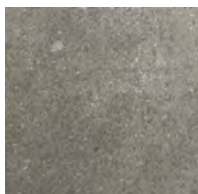
AutoStoneUSA CT-1 tiles are part of our Clean.Tech.USA platform which includes a permanent sealant applied during the manufacturing process which seals surface micropores. This resists permanent staining and aids dealers with their cleaning practices.

See the difference between the two showroom CT-1 options and discover the AutoStoneUSA advantages.

Size Comparison!



AutoStoneUSA
24" x 24"



"other tile"
18" x 18"

Bigger is Better!

AutoStoneUSA CT-1 tile has 25% more surface space.
AutoStoneUSA CT-1 tile has fewer grout lines. AutoStoneUSA CT-1 tile has thinner grout lines. AutoStoneUSA CT-1 tile looks modern, attractive and better!

Get more value and better results with AutoStoneUSA!



AUTOSTONEUSA IS YOUR BEST CT-1 TILE CHOICE

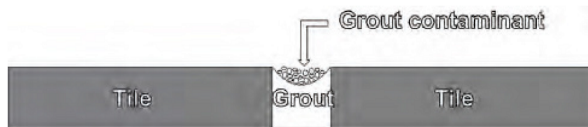
Grout Joints

The lowest part of the floor is the "U" space that makes the grout line, which is shown below. The grout lines are where dirt, grease, grime and daily contaminants sit until removed. The goal is to have fewer grout lines and thinner grout lines. AutoStoneUSA CT-1 tiles provide Subaru showrooms those advantages and provides better outcomes.

Grout Joints

Grout joints are the lowest part of your floor which collect dried soap residue and dirt debris. A tell-tale sign of poor cleaning practices is the presence of a "whitish" grout joint. This usually indicates the presence of dried soap residing in the grout joint. When this is present, it usually indicates that your tile surface has a soap chemical residue on the tile surface.

When soap residue is present, it is mostly invisible, but it shows excessive tracking and debris once the water has evaporated.



- AutoStone RECTIFIED tile allows for THINNER grout lines.
- "Other tile" is a PRESSED tile requires WIDER grout lines.

Summary:

- * Smaller (18" x 18") size format increases your grout lines by 25%.
- * "Other tile" has wider grout lines.
- * Smaller tiles look dated and old fashion.

AutoStoneUSA CT-1 tile look modern, fresh, and better!

Preference AutoStone for your Subaru project to guarantee better results.!



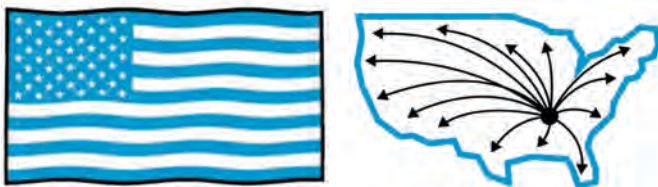
AUTOSTONEUSA IS YOUR BEST CT-1 TILE CHOICE

Cleaner Retailing Environments and "Like New" Appearance

The AutoStoneUSA CT-1 tile for Subaru is part of our Clean.Tech.USA platform. This is a tile that is produced with a permanent sealant baked-in during the manufacturing process. This process seals the surface micropores which enhances the surface to resist staining. This also aids the dealerships with their daily, regular cleaning and maintenance practices. This is a significant benefit!

Made in the USA

AutoStoneUSA and our Subaru CT-1 Clean.Tech.USA materials are Made in the USA! We resolve supply chain challenges and provide your Subaru dealership build with on-time materials when specified by your project architect as the product of preference.



**BUY THE BEST
AMERICAN QUALITY
MADE IN USA**

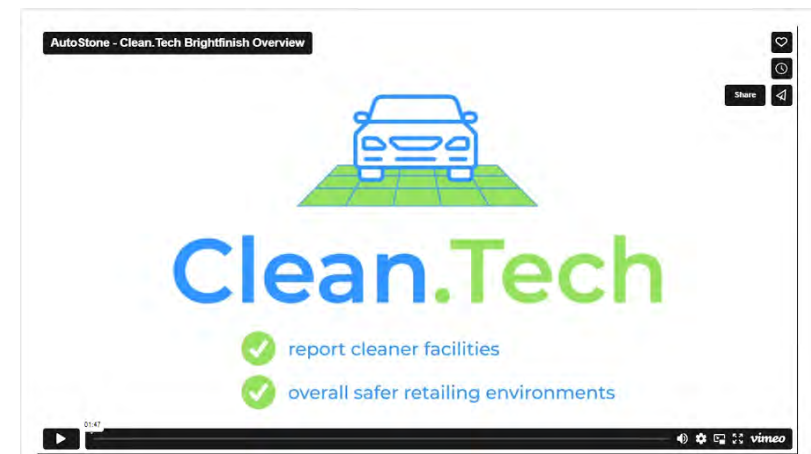
Click below to access Clean.Tech web page.



Find information on Clean.Tech website:

[Clean.Tech Information](#)

See short video explainer on Clean.Tech and the technology built into the AutoStoneUSA Subaru CT-1 tile:



Find video explainer on Clean.Tech click to view :

[Clean.Tech Video Explainer](#)



IMPORTANT TILE SPECIFICATION INFORMATION

AutoStoneUSA CT-1 showroom tile is **24" x 24"** - compared to - Louisville tile which is **18" x 18"**. The "other tile" is smaller and looks dated when installed in large automotive showrooms. With AutoStone you have fewer grouts lines (the "other tile" has 25% grout lines to get dirty, and stain).

Less grout = less grime. Automotive dealers prefer larger tiles, fewer grout lines, and tighter grout lines which only AutoStone offers.

AutoStoneUSA tiles are RECTIFIED so each tile is the same size which allows you for tight grout joints. Subaru wants 1/8" thick grout lines, which you CAN get with AutoStone. The "other tile" is a pressed (not rectified) and you cannot install to 1/8" (or 1/16") thickness.

IMPORTANT GROUT AND PROJECT COST NOTE:

Because AutoStoneUSA has fewer grout lines and thinner grout lines, you can use a non-epoxy grout system. Subaru and Feltus Hawkins list Laticrete PermaColor Select, or similar.

"Other tile" has 25% more grout lines which are up to 50% thicker than AutoStone tiles. "Other tile" requires a more expensive grout - Laticrete SpectraLoc **EPOXY** grout. Use of an epoxy grout **increases your project bid cost by \$ 1.50 to \$ 2.00 more per square foot** versus AutoStoneUSA tile with a premium polymer modified grout. AutoStoneUSA tiles will save your project significant money when you include the grout system required for each tile solution.

AutoStoneUSA 24" x 24" tiles deliver a better looking interior facility that is modern and purposeful. While the tile costs between AutoStoneUSA and "other tile" maybe similar but when you add the cost for the epoxy grout system, you will pay more money with "other tile" selection.

SURFACE	CODE	MATERIAL	MANUFACTURER	MFR. PHONE NO.	PRODUCT INFORMATION
CEILING	DW	DRYWALL			TO BE SPECIFIED BY LOCAL ARCHITECT. PAINT TO MATCH ACT1.
CEILING	ACT-1	ACOUSTICAL CEILING TILE	ARMSTRONG		ULTIMA BEVELED TEGULAR/ #1901/ COLOR: WHITE/ 24" X 24"/ BEVELED TEGULAR TILE/ FINE TEXTURE/ PRELUDE XL 15/16 EXPOSED TEE GRID
CEILING	ACT-2	ACOUSTICAL CEILING TILE	ARMSTRONG		CORTEGA/ #769/ COLOR: WHITE/ 24" X 48"/ EXPOSED TEE GRID
FLOORS	CT-1	PORCELAIN TILE	LOUISVILLE TILE	502-276-2880 nationalaccounts@louisville-tile.com	LOUISVILLE TILE ITEM NUMBER: SSSG.11818UPS, ITEM NAME: SLAY GRAY; 18x18/ 1/8" OR 1/16" JOINT / GROUT SYSTEM: LATICRETE SPECTRALOCK , COLOR: #60 DUSTY GREY
FLOORS	CT-1 ALT	PORCELAIN TILE	AUTOSTONE	800-772-1473 subaru@autostoneusa.com	CLEAN.TECH SERIES / BRIGHTFINISH / CHARCOAL 24x24 / 1/8" JOINT . GROUT SYSTEM: LATICRETE PERMACOLOR SELECT , COLOR: CHARCOAL



IMPORTANT TILE SPECIFICATION INFORMATION

AutoStoneUSA CWT-1 restroom wall tile is **24" x 24"** - and on-grid with our CT-1 showroom tile. This means that the restroom design specified by the architect, built by the GC, and installed by the flooring contractor will look great because the tiles on the floor are the same size as on the walls. This creates better Subaru retailing environments.

The "other tile" CTW-1 restroom wall tile is 12" x 24" and 24" x 24", which will not align with the grout lines on the floors when matched with Louisville CT-1 tile.

When you install an 18" x 18" floor tile with wall tiles that are either 12" x 24" or 24" x 24" - you will not achieve an on-grid tile alignment. This mis-aligned floor to wall tile design creates a mis-matched look that is not visually pleasing. This misalignment undermines the Subaru retailing environment you are working to design, build, install and ultimately deliver to the dealer.

IMPORTANT GROUT AND PROJECT COST NOTE:

As in the showroom spaces, the same grout lines and grout specifications exist in the customer restroom. AutoStoneUSA has fewer grout lines and thinner grout lines, you can use a non-epoxy grout system. Subaru and Feltus Hawkins list Laticrete PermaColor Select, or similar.

AutoStoneUSA 24" x 24" tiles deliver a better looking interior facility that is modern and purposeful.

While the tile costs between AutoStoneUSA and "other tile" are similar, when you add the cost for the epoxy grout system, you will pay more money with the "other tile" option.

WALLS	CWT-1	PORCELAIN TILE	LOUISVILLE TILE	502-276-2880 nationalaccounts@louisville-tile.com	LOUISVILLE TILE ITEM NUMBER: FLTSB34915-12X24 / 12X24 / 1/8" JOINT / GROUT SYSTEM: LATICRETE SPECTRALOCK, COLOR: #60 DUSTY GREY
WALLS	CWT-1 ALT	PORCELAIN TILE	AUTOSTONE	800-625-5314 Contact: Subaru Team	CLEAN.TECH SERIES / BRIGHTFINISH / CHARCOAL 24x24 / 1/8" JOINT LATICRETE PERMACOLOR SELECT, COLOR: CHARCOAL
WALLS	CWT-2	PORCELAIN TILE	LOUISVILLE TILE	502-276-2880 nationalaccounts@louisville-tile.com	LOUISVILLE TILE ITEM NUMBER: SSSG/.11818UPS, ITEM NAME: SLAY GRAY; POLISHED; 18x18/ 1/8" OR 1/16" JOINT/ GROUT SYSTEM: LATICRETE SPECTRALOCK, COLOR: #60 DUSTY GREY
WALLS	CWT-2 ALT	PORCELAIN TILE	AUTOSTONE	800-625-5314 Contact: Subaru Team	PREMIER.4 SERIES/ POLISHED 24x24/ 1/8" OR 1/16" JOINT/ LATICRETE PERMACOLOR SELECT, COLOR: CHARCOAL