

autostone
floor systems



SUBARU



Clean.Tech.USA

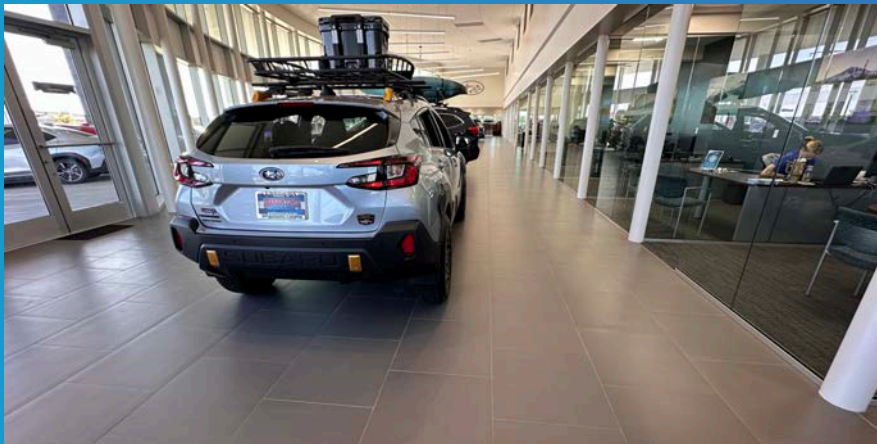
Subaru Tile Guide

2026 Edition

Subaru Brand Compliant Program
AutoStoneUSA.com/Subaru



MADE IN AMERICA



AutoStoneUSA.com

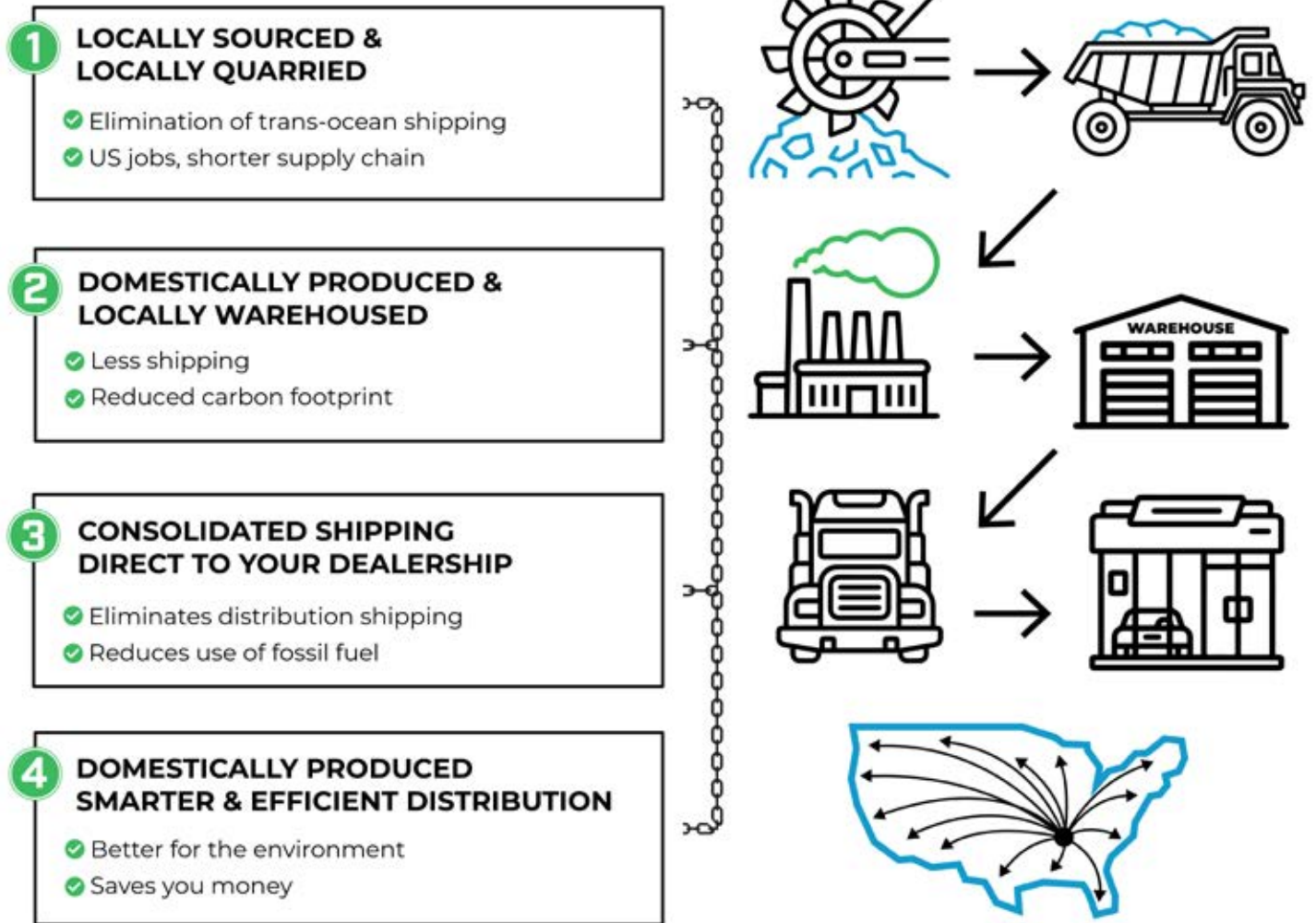
© 2026 AutoStone Floor Systems, All Rights Reserved.





Q2KD

QUARRY TO KILN DISTRIBUTION MODEL





CT-1

Showroom & Customer Contact Areas

Series: Clean.Tech.USA

Color: Charcoal

Finish: Honed | Natural

Size: 24" x 24" (U.S. Nominal Dimensions)

ANSI A326.3:

Interior Dry (ID) & Interior Wet (IW)

> .42 DCOF Dry and > .42 DCOF Wet



USA
MANUFACTURED

brightfinish
ultra-cleanable technology

Below: actual color varies, example is only representative



Series: Laticrete Permacolor Select

Color: 45 Raven

Thinset: LHT Plus

AutoStone CT-1 (Subaru Showroom) Tiles Reduce Stains & Clean Easier

The Clean.Tech surface aids dealers with cleaning practices and enhances your showroom appearance. AutoStone tile is much easier to clean for Subaru dealers. AutoStone Clean.Tech eliminates concerns with your tile showing haze, dirt, grime, etc., (with proper cleaning practices). Tile does stain easily, especially with tire-bright, or similar tire dressing materials.

The result? Better appearing Subaru stores, happier dealers!



Click the image above for a Clean.Tech demonstration

Reduced Fossil Fuel Use And Reduced Carbon Footprint - AutoStoneUSA

AutoStoneUSA "Made in America" materials do more than reduce costs. We reduce carbon emissions by eliminating trans-ocean shipping. We source raw materials regionally and near our production facilities. We eliminate the import of raw materials from other countries which repeat the dependency and use of fossil fuels, and additional trans-ocean shipping.

Trans-ocean shipping is heavily dependent on over-stressed ports which include over-land trucking and transport. This further expands use of fossil-fuels. Additionally, AutoStoneUSA warehouses near our production and we eliminate shipping through distribution systems and instead ship directly to your project site.

The AutoStoneUSA Quarry to Kiln method significantly reduce carbon emissions.

- AutoStoneUSA manufactures with locally quarried and locally sourced raw materials
- AutoStoneUSA manufactures in state-of-the-art, energy, and environmentally efficient facilities
- AutoStoneUSA has significantly shortened our supply chain which reduces our carbon footprint and supply chain risk.
- The longer the supply chain, the greater the risk and larger the carbon footprint.
- AutoStoneUSA manufacturing creates American jobs, supports communities, and increases domestic investment.

No other tile company has committed to domestic (USA) production in support of the automotive retail facility like AutoStoneUSA. No other tile company supports your Subaru project better!



CT-1 & CWT-1 Charcoal



Showroom & Restroom Floors & Restroom Walls

Series: Clean.TechUSA

Color: Charcoal

Finish: Honed | Natural

Size: 24" x 24" (U.S. Nominal Dimensions)

COMPANION SERIES - DESIGNED TO WORK TOGETHER



CWT-2 Deep Grey Charcoal - Polished

Restroom Floors & Restroom Walls

Series: Premier

Color: Deep Grey Charcoal

Finish: Polished

Size: 24" x 24" (U.S. Nominal Dimensions)

COMPANION SERIES - DESIGNED TO WORK TOGETHER



CWT-3 - Deep Grey - BrightFinish

Restroom Walls

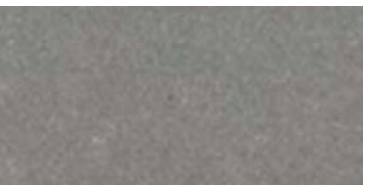
Series: Clean.Tech

Color: Deep Grey

Finish: Matte | BrightFinish

Size: 12" x 24" (U.S. Nominal Dimensions)

COMPANION SERIES - DESIGNED TO WORK TOGETHER



CWT-4 - Grigio Deep Grey

Restroom Walls

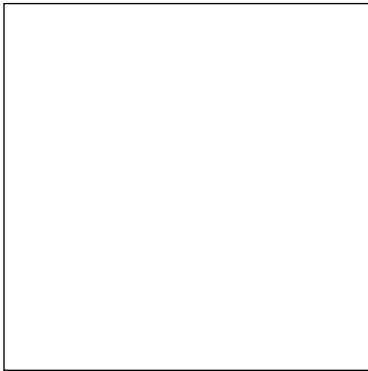
Series: Premier

Color: Grigio Deep Grey

Finish: Matte | Natural

Size: 12" x 24" (U.S. Nominal Dimensions)

COMPANION SERIES - DESIGNED TO WORK TOGETHER



CWT-5 - Simply White

Restroom & Tech Locker Room Walls

Series: WallTiles!

Color: Simply White

Finish: Satin

Size: 12" x 24" (U.S. Nominal Dimensions)

COMPANION SERIES - DESIGNED TO WORK TOGETHER



CWT-6 - Stormy Grey

Restroom & Tech Locker Room Walls

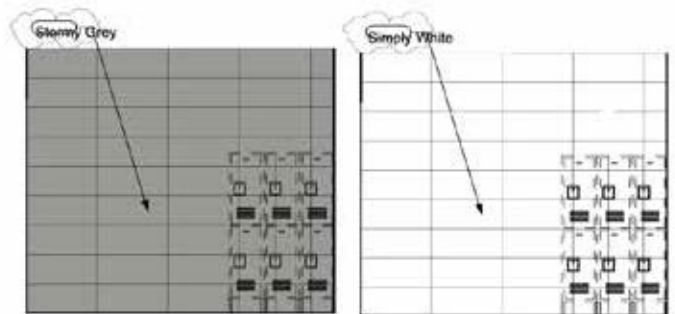
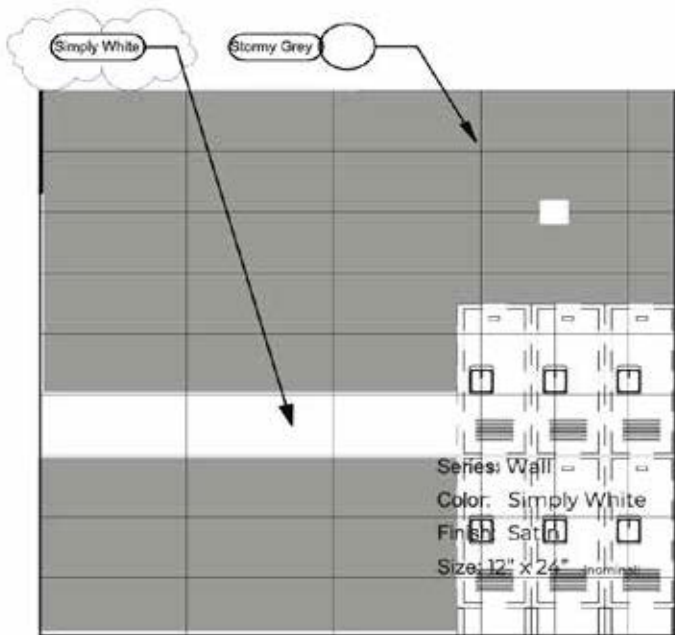
Series: WallTiles!

Color: Stormy Grey

Finish: Glossy

Size: 12" x 24" (U.S. Nominal Dimensions)

COMPANION SERIES - DESIGNED TO WORK TOGETHER





CWT-8 Subway Simply White

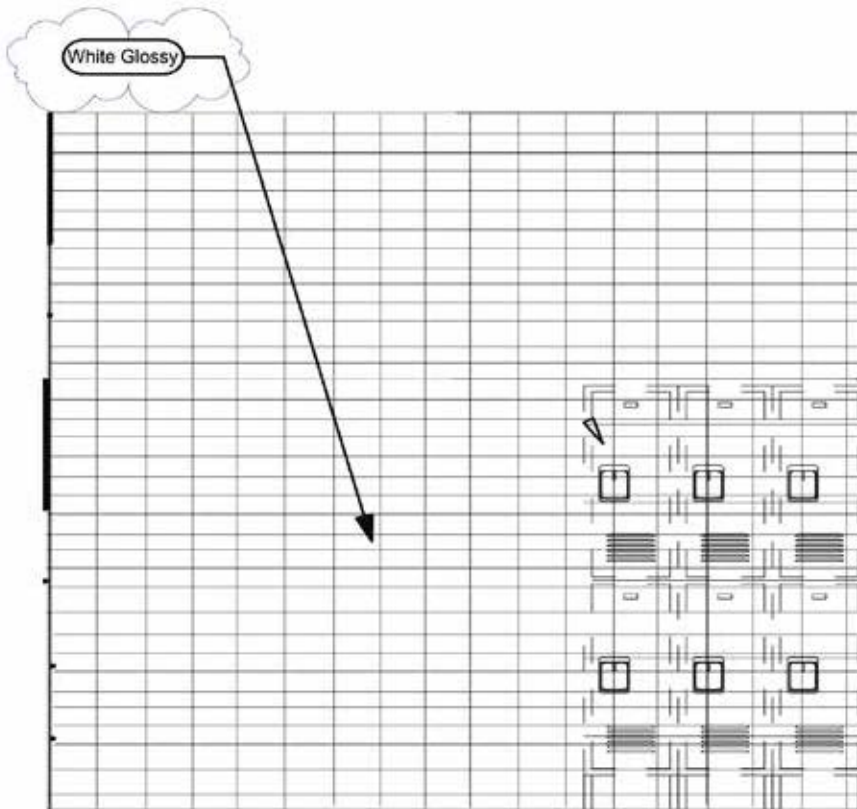
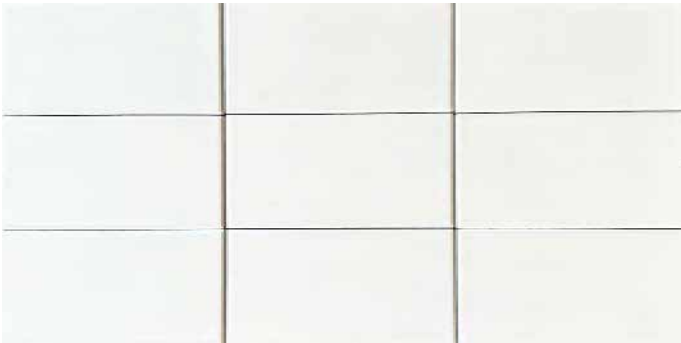
Series: WallTiles! - Subway

Color: Bright White

Finish: Glossy

Size: 03" x 06" (U.S. Nominal Dimensions)

Restroom & Tech Locker Room Walls





CWT-6 ALT Granita Grey

Series: WallTiles!

Color: Granita Grey

Finish: Satin

Size: 08" x 08" (U.S. Nominal Dimensions)

Tech Locker Room Walls



CWT-7 ALT Anthracite Grey

Series: WallTiles!

Color: Anthracite Grey

Finish: Satin

Size: 08" x 08" (U.S. Nominal Dimensions)

Tech Locker Room Walls



CT-6 Smoke Grey

Series: DriveSeries08USA
Color: Smoke Grey
Finish: Super.Grip3L.Brightfinish
Size: 8" X 8" (U.S. Nominal Dimensions)
Surface Traction Conforms to:
ANSI A326.3 Use Category:
4.1.3 Interior Wet Plus (IW+)
4.1.4 Exterior Wet (EW)
4.1.5 Oils/Greaseses (O/G).



CT-6 ALT Alloy Grey

Series: DriveSeries08USA
Color: Alloy Grey
Finish: Super.Grip3L.Brightfinish
Size: 8" X 8" (U.S. Nominal Dimensions)
Surface Traction Conforms to:
ANSI A326.3 Use Category:
4.1.3 Interior Wet Plus (IW+)
4.1.4 Exterior Wet (EW)
4.1.5 Oils/Greaseses (O/G).



CT-7 Carbon-Genesis Black

Series: DriveSeries08USA
Color: Carbon/Genesis Black
Finish: Super.Grip3L.Brightfinish
Size: 8" X 8" (U.S. Nominal Dimensions)
Surface Traction Conforms to:
ANSI A326.3 Use Category:
4.1.3 Interior Wet Plus (IW+)
4.1.4 Exterior Wet (EW)
4.1.5 Oils/Greaseses (O/G).



Manufactured Declared Uses

Evaluate for use in automotive workshop and service drive environments

4.1.4 (Exterior, Wet) - level outdoor spaces walkways, sidewalks, where such floors may be walked upon when wet (excluding ice or snow) if level, clean, maintained and free of standing water or other contaminants.

4.1.5 (Oils/Greases) - level areas regularly exposed to automotive fluids, etc., so long as floors are level, regularly cleaned, maintained and free of standing water and contaminant build-up. Consult with your architect to

determine dealership practices. **Review ANSI A326.3 2021 standard.**

Declared Product Use & DCOF Requirement

Meets and exceeds .55 DCOF rating as required for ANSI A326.3 4.1.4 Exterior Wet (EW).



CT-6 ALT Smoke Grey

Series: eShop08USA
Color: Smoke Grey
Finish: Super.Grip.Brightfinish
Size: 8" X 8" (U.S. Nominal Dimensions)
Surface Traction Conforms to:
ANSI A326.3 Use Category:
4.1.3 Interior Wet Plus (IW+)
4.1.4 Exterior Wet (EW)
4.1.5 Oils/Greases (O/G).



CT-6 ALT Alloy Grey

Series: eShop08USA
Color: Alloy Grey
Finish: Super.Grip.Brightfinish
Size: 8" X 8" (U.S. Nominal Dimensions)
Surface Traction Conforms to:
ANSI A326.3 Use Category:
4.1.3 Interior Wet Plus (IW+)
4.1.4 Exterior Wet (EW)
4.1.5 Oils/Greases (O/G).



CT-7 ALT Carbon-Genesis Black

Series: eShop08USA
Color: Carbon/Genesis Black
Finish: Super.Grip.Brightfinish
Size: 8" X 8" (U.S. Nominal Dimensions)
Surface Traction Conforms to:
ANSI A326.3 Use Category:
4.1.3 Interior Wet Plus (IW+)
4.1.4 Exterior Wet (EW)
4.1.5 Oils/Greases (O/G).



Manufactured Declared Uses

Evaluate for use in automotive workshop and service drive environments

4.1.4 (Exterior, Wet) - level outdoor spaces walkways, sidewalks, where such floors may be walked upon when wet (excluding ice or snow) if level, clean, maintained and free of standing water or other contaminants.

4.1.5 (Oils/Greases) - level areas regularly exposed to automotive fluids, etc., so long as floors are level, regularly cleaned, maintained and free of standing water and contaminant build-up. Consult with your architect to

determine dealership practices. **Review ANSI A326.3 2021 standard.**

Declared Product Use & DCOF Requirement

Meets and exceeds .55 DCOF rating as required for ANSI A326.3 4.1.4 Exterior Wet (EW).





CT-6 Smoke Grey

Series: Enviroshop12USA
Color: Smoke Grey
Finish: Traction.Brightfinish
Size: 12" x 12" (U.S. Nominal Dimensions)
Surface Traction Conforms to:
ANSI A326.3 Use Category:
4.1.3 Interior Wet Plus (IW+)



EnviroShop12usa
smarter, better workshops



brightfinish
ultra-cleanable technology



CT-6 ALT Alloy Grey

Series: Enviroshop12USA
Color: Alloy Grey
Finish: Traction.Brightfinish
Size: 12" x 12" (U.S. Nominal Dimensions)
Surface Traction Conforms to:
ANSI A326.3 Use Category:
4.1.3 Interior Wet Plus (IW+)



brightfinish
ultra-cleanable technology



CT-7 Carbon Black

Series: Enviroshop12USA
Color: Carbon Black
Finish: Traction.Brightfinish
Size: 12" x 12" (U.S. Nominal Dimensions)
Surface Traction Conforms to:
ANSI A326.3 Use Category:
4.1.3 Interior Wet Plus (IW+)



brightfinish
ultra-cleanable technology



Manufactured Declared Uses

Evaluate for use in automotive workshop and service drive environments
4.1.3 (Interior Wet Plus) - Covered exterior areas, where such floors may be walked upon when wet if clean, maintained and free of standing water or other contaminants.

Consult with your architect to determine dealership practices.

Review ANSI A326.3 2021 standard.

Declared Product Use & DCOF Requirement

Meets and exceeds .50 DCOF rating as required for ANSI A326.3 4.1.3 Interior Wet Plus (IW+).



CT-6 ALT Alloy Grey

Series: DriveSeries12USA

Color: Alloy Grey

Finish: Traction3L.Brightfinish

Size: 12" x 12" (U.S. Nominal Dimensions)

Surface Traction Conforms to:

ANSI A326.3 Use Category:

4.1.3 Interior Wet Plus (IW+)

4.1.4 Exterior Wet (EW)

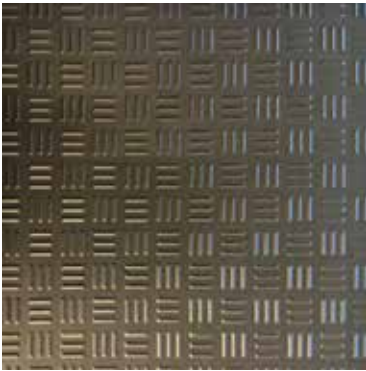
4.1.5 Oils/Greases (O/G).



DriveSeries12USA
advanced surface technology



brightfinish
ultra-cleanable technology



CT-7 ALT Carbon Black

Series: DriveSeries12USA

Color: Carbon Black

Finish: Traction3L.Brightfinish

Size: 12" x 12" (U.S. Nominal Dimensions)

Surface Traction Conforms to:

ANSI A326.3 Use Category:

4.1.3 Interior Wet Plus (IW+)

4.1.4 Exterior Wet (EW)

4.1.5 Oils/Greases (O/G).



brightfinish
ultra-cleanable technology

Manufactured Declared Uses

Evaluate for use in automotive workshop and service drive environments

4.1.4 (Exterior, Wet) - level outdoor spaces walkways, sidewalks, where such floors may be walked upon when wet (excluding ice or snow) if level, clean, maintained and free of standing water or other contaminants.

4.1.5 (Oils/Greases) - level areas regularly exposed to automotive fluids, etc., so long as floors are level, regularly cleaned, maintained and free of standing water and contaminant build-up. Consult with your architect to determine dealership practices. **Review ANSI A326.3 2021 standard.**

Declared Product Use & DCOF Requirement

Meets and exceeds .55 DCOF rating as required for ANSI A326.3 4.1.4 Exterior Wet (EW).

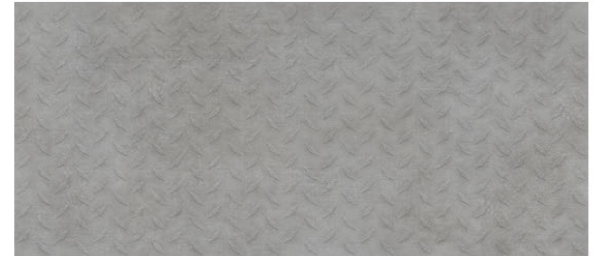
INDUSTRIAL ENVIRONMENT LVT LARGE (18" x 36") FORMAT FLOOR & WALL PANELS

RA3

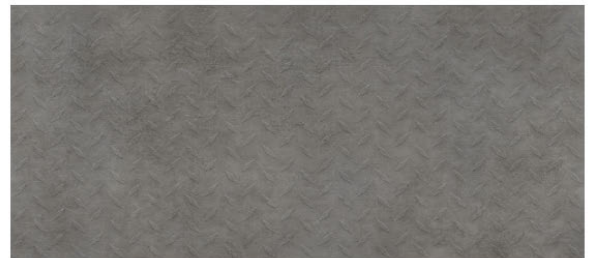
Great for Parts, Storage Areas, Janitorial, Lunch & Break Rooms, Tech Locker Room Floors & Walls.

Wainscoting for Hallways, WorkShop Areas & All Back-Office Areas.

18" x 36" large format panels with rugged diamond plated surface texture to help reduce STF (slip, trip, and fall) risk.



Grey Concrete



Deep Concrete



SURFACE CAMOUFLAGE

Surface Camouflage enhances the beauty of your floor by reducing the negative visual daily contaminants generated during your workday.



SCRATCH RESISTANT SURFACE

Will not dent, scratch, or chip like metal, concrete, epoxy, tile, or other finishes.



CHEMICAL RESISTANT SURFACE

Resistant to water, gasoline, MEK, acetone, motor oil, isopropanol, acetic acid, ammonia, sodium chloride solution, and other chemicals.*



IMPACT GUARD SURFACE

Strong, rugged, and stands up to blunt force impact better than any other surface.



RA3 IS RECOMMENDED FOR CLIMATE CONTROLLED ENVIRONMENTS WITH A ROOF, WALL AND DOORS FLOOD SAFE, WATER RESISTANT, + SOUND REDUCTION



CLIMATE-CONTROLLED ENVIRONMENTS

For environments with a temperature room range of 40° and 104°-degrees.*



FLOOD SAFE & WATER RESISTANT

Panels are moisture-resistant and can be submerged for days and remain bonded.



LESS NOISE BETTER CONDITIONS

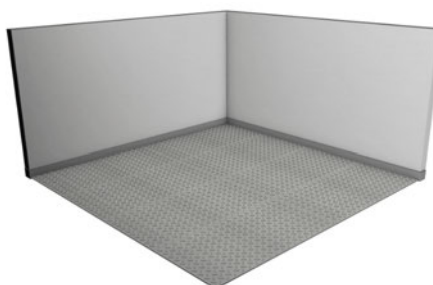
Reduces noise decibels (dB) and improves working conditions.

So easy to install that there is no need for expensive, highly skilled labor.

So fast that you can use immediately upon installation; no cure time required.

Panels are installed edge-to-edge, and wall-to-wall for a seamless, beautiful floor.

Commercial workshops install in 1-2 days (depending on size).



RA3

RA3 PANEL PRICE

Troweled Adhesive Method*

*Troweled adhesive will be added to your quote

Thickness: 3mm

Size: 18" x 36" Panel (4.5 SQFT Per Panel)

SURFACE CAMOUFLAGE

SCRATCH RESISTANT SURFACE

CHEMICAL RESISTANT SURFACE

IMPACT GUARD SURFACE

Features Included:

- Rated for climate-controlled environments (home garage)
- Surface Camouflage
- Scratch Resistant Surface
- Chemical Resistant Surface
- Impact Guard Surface
- Industrial Strength 30 mil Wear-Layer

The AutoStoneUSA Subaru Team

General and immediate online help.



You can find most information including quotes

on our Subaru Brand Webpage

AutoStoneUSA Subaru Sales Team

subaru@autostoneusa.com

<https://autostoneusa.com/subaru/>

214-393-4875 phone



Omer Naffa
Executive Sales Coordinator
& Project Coordinator
214-393-4865 direct dial
214-235-5483 mobile
omer@autostoneusa.com

**autostone
usa**



Jana Manzella
Architectural Liaison &
Program Development Manager
931-494-6165 mobile/text
jana@autostoneusa.com

**autostone
usa**



Barry Wells
President, Owner, Founder
214-393-4862 direct dial
214-830-1206 mobile
barry@autostoneusa.com

**autostone
usa**