

autostone usa

Service Drive & WorkShop

12" x 12" Size

Tile Guidebook

2026.4 Edition

EnviroShop12usa
smarter, better workshops

and

DriveSeries12USA
advanced surface technology

Contains tile specifications including
thickness, grout material matching, and more.



MADE IN AMERICA

**ANSI A 326.3 STF Standards and Product Use
Categories:**

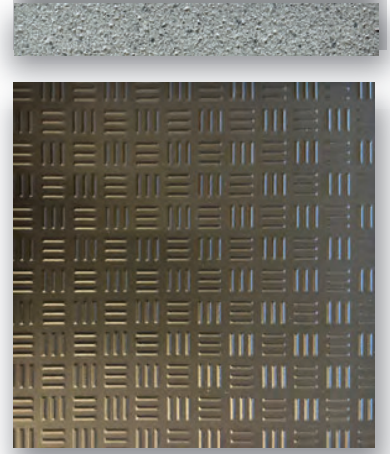
4.1.3 Interior Wet, Plus (IW+)

4.1.4 Exterior Wet (EW)

4.1.5 Oils & Grease (O/G)

AutoStoneUSA.com

© 2026 AutoStone Floor Systems, All Rights Reserved.





Series: EnviroShop12USA
Color: Alloy Grey
Finish: Traction.Brightfinish
Size: 12" x 12"
Surface Traction Conforms to:

ANSI A326.3
 4.1.3 Interior Wet Plus (IW+).

DCOF: > .50 Wet



Series: EnviroShop12USA
Color: Smoke Grey
Finish: Traction.Brightfinish
Size: 12" x 12"
Surface Traction Conforms to:

ANSI A326.3
 4.1.3 Interior Wet Plus (IW+).

DCOF: > .50 Wet



Series: EnviroShop12USA
Color: Carbon Black
Finish: Traction.Brightfinish
Size: 12" x 12"
Surface Traction Conforms to:

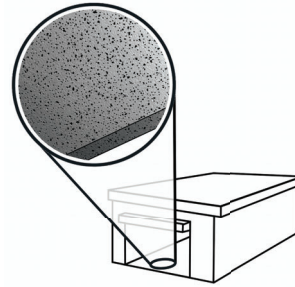
ANSI A326.3
 4.1.3 Interior Wet Plus (IW+).

DCOF: > .50 Wet



EnviroShop12usa

smarter, better workshops



EnviroShop12USA provides you a permanent floor for your service drive, workshop, tech locker rooms, and any area where you need a durable floor with a textured surface to help you manage your STF (slip, trip, and fall) risk.

EnviroShop12USA is Made in the USA and provides automotive dealers a

more affordable option than other surface finish options. When ordered and shipped on the same truck with your showroom tile, Enviroshop12USA is equal to or less than temporary epoxy coatings.

We recommend you price compare your automotive project to include Enviroshop12USA in your service drive or workshop. We offer dealers a better solution for the most important and interactive space in your dealership, - the service drive.

With EnviroShop12USA you a permanent floor that helps manage your STF risk and can be cleaned and maintained in a "like new" appearance for the life of your dealership..

Advantages

1. Our original workshop floor with textured surface.
2. Surface texture is elevated above the surface bed for easier cleaning.
3. Will not permanently stain or darken when properly cleaned.
4. This product has:

slipresistant
textured floor surfaces

AutoStoneUSA Manufactured Declared Use

4.1.3 Interior, Wet Plus (IW+) - evaluate for interior use in automotive workshop and service drive environments with high speed doors and tech locker rooms. Enviroshop12USA has a traction surface suitable for interior, wet plus applications, with good drainage. Floors walked on when wet should be level, clean, maintained and free of standing water or other contaminants. Should be cleaned with frequent maintenance to keep clean.

Declared Product Use & DCOF Requirement

Meets and exceeds .50 DCOF (wet) rating, appropriate for this environment of use:

ANSI A326.3 4.1.3 Interior Wet Plus (IW+).



Series: DriveSeries12USA
Color: Alloy Grey
Finish: Traction.3L.Brightfinish
Size: 12" x 12"

Surface Traction Conforms to:

ANSI A326.3
 4.1.3 Interior Wet Plus (IW+).
 4.1.4 Exterior Wet (EW)
 4.1.5 Oils & Grease (O/G)

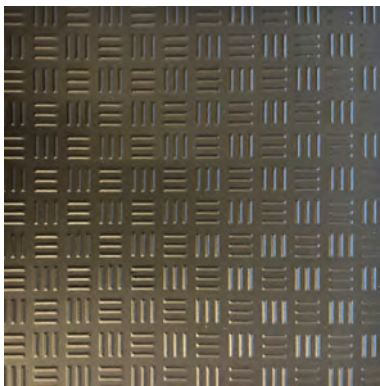
DCOF: > .55 Wet

Series: DriveSeries12USA
Color: Carbon Black
Finish: Traction.3L.Brightfinish
Size: 12" x 12"

Surface Traction Conforms to:

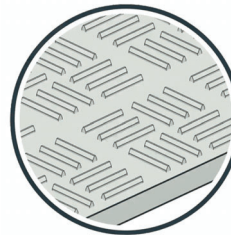
ANSI A326.3
 4.1.3 Interior Wet Plus (IW+).
 4.1.4 Exterior Wet (EW)
 4.1.5 Oils & Grease (O/G)

DCOF: > .55 Wet



DriveSeries12USA

advanced surface technology



DriveSeries12USA includes three lines of elevated traction which supports your automotive dealership environment a better surface to manage STF (slip, trip, and fall) risk. DriveSeries12USA includes BrightFinish which is a permanent sealant which coats and covers the tile

surface to retard permanent stains. BrightFinish helps dealers with the recommended cleaning efforts so your facility can be maintained in a "like new" condition.

With DriveSeries12USA you get STF (slip, trip, and fall) risk management support and a floor that can be cleaned and maintained in a "like new" appearance.

A permanent enhanced porcelain technology floor system. See declared uses below. Should be cleaned with frequent maintenance to keep clean and free of contamination and debris when dealership is operating. Spot spills should be removed immediately and not left on surface. Floor cleaning should include use of de-greasing chemical, floor scrubber sweeper machine with wet vacuum to suck-up dirty water and debris as part of cleaning process.

Advantages

1. Advanced surface technology to better manage STF (slip, trip & fall) risk.
2. Surface has repeating lines elevated above the bed of the tile. Designed for greater foot, shoe-sole traction.
3. Will not permanently stain or darken when properly cleaned.

AutoStoneUSA Manufactured Declared Use

Evaluate for use in automotive workshop and service drive environments.

- 4.1.3 Interior, Wet Plus (IW+)** - evaluate for interior use in automotive workshop and service drive environments with high speed doors and tech locker rooms.
- 4.1.4 Exterior, Wet (EW)** - level outdoor spaces walkways, sidewalks, where such floors may be walked upon when wet (excluding ice or snow) if level, clean, maintained and free of standing water or other contaminants.
- 4.1.5 Oils/Greases (O/G)** - level areas regularly exposed to automotive fluids, etc., so long as such floors are level, regularly cleaned, maintained and free of standing water and contaminant build-up.

Declared Product Use & DCOF Requirement

Meets and exceeds .55 DCOF (wet) rating, appropriate for this environment of use:

ANSI A326.3 4.1.3 Interior Wet Plus (IW+).
 ANSI A326.3 4.1.4 Exterior Wet (EW).
 ANSI A326.3 4.1.5 Oils/Grease (O/G).

EnviroShop12usa

smarter, better workshops

DriveSeries12USA

advanced surface technology



Series: EnviroShop12USA
Color: Alloy Grey
Finish: Traction.Brightfinish
Size: 12" x 12"
Surface Traction Conforms to:
ANSI A326.3
4.1.3 Interior Wet Plus (IW+).
DCOF: > .50 Wet



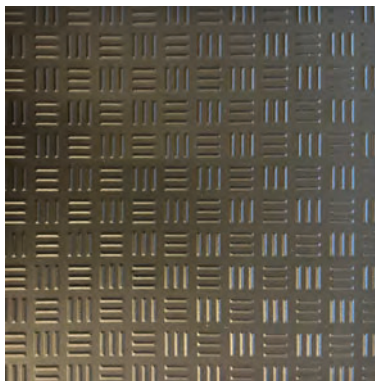
Series: DriveSeries12USA
Color: Alloy Grey
Finish: Traction.3L.Brightfinish
Size: 12" x 12"
Surface Traction Conforms to:
ANSI A326.3
4.1.3 Interior Wet Plus (IW+).
4.1.4 Exterior Wet (EW)
4.1.5 Oils & Grease (O/G)



DCOF: > .55 Wet



Series: EnviroShop12USA
Color: Smoke Grey
Finish: Traction.Brightfinish
Size: 12" x 12"
Surface Traction Conforms to:
ANSI A326.3
4.1.3 Interior Wet Plus (IW+).
DCOF: > .50 Wet



Series: DriveSeries12USA
Color: Carbon Black
Finish: Traction.3L.Brightfinish
Size: 12" x 12"
Surface Traction Conforms to:
ANSI A326.3
4.1.3 Interior Wet Plus (IW+).
4.1.4 Exterior Wet (EW)
4.1.5 Oils & Grease (O/G)



DCOF: > .55 Wet



Series: EnviroShop12USA
Color: Carbon Black
Finish: Traction.Brightfinish
Size: 12" x 12"
Surface Traction Conforms to:
ANSI A326.3
4.1.3 Interior Wet Plus (IW+).
DCOF: > .50 Wet





EnviroShop12usa

smarter, better workshops



Smoke Grey

12" x 12"*



Alloy Grey

12" x 12"*



Carbon Black

12" x 12"*

NEW SIZING (2024): 12" x 12" (*U.S. Nominal Dimension) = 11 5/8" x 11 5/8". Actual Size: **295 mm x 295 mm**. This is a rectified tile.

Sizing

Enviroshop is a rectified tile which means that every tile is precisely cut for exact size dimension. This allows for tighter grout joints due to tile size consistency. Even with rectification precision, tiles dimensions may vary within **(+) or (-) 1 mm** in sizing. This is within ANSI A137.1 and TCNA (Tile Council of North America) standards compliance. 1 mm = 0.03937" or approximately 1/16" or 3/64" in fractional sizing.

Description

A permanent enhanced porcelain technology floor tile and system for use in automotive workshop and climate controlled service drive environments. For interior environments only.



STF (Slip, Trip, and Fall) Risk Management

Determining your environment of use for STF risk mitigation.



Automotive service facilities face new ANSI STF (slip, trip, and fall) safety standards which require a closer inspection by dealers, architects, and their builders for the type of floor surface and tile to be used.

The good news is, AutoStoneUSA has the solutions and products to help you measure and reduce your STF (slip, trip, and fall) risk exposure, regardless of your facility design and operational use.

The new ANSI A326.3 2021 (STF Standard) states “...specifier shall determine materials appropriate for project conditions, considering by way of example, but not in limitation, type of use, traffic, expected contaminants, expected maintenance, expected wear, and manufacturers’ guidelines and recommendations.”

This new ANSI standard creates (5) categories which provide definition to help specifier (architect), builder (GC), facility operator (dealership owner), and flooring contractor, on how to define your facility. The previous approach of “one-size-fits-all” does not apply. Below are the categories which your facility is to be measured by to determine your risk category. Depending on your use of high-speed doors, HVAC controls and exposure to the elements impacts your rating. Additionally, geographical location (climate), and exposure to chemicals, especially **oils and grease**, determine “classification”. **Automotive service requires greater STF mitigation.**

A326.3 2021	Classification	Reference Category	Criteria	Comments	AutoStoneUSA
4.1.1	Interior, Dry	ID	> 42 dry DCOF* (per Section 10.1)	n/a for automotive retail	YES
4.1.2	Interior, Wet	IW	> 42 wet DCOF* (per Section 9.1)	most retail showroom areas	YES
4.1.3	Interior, Wet Plus	IW+	> 50 wet DCOF* (manufacturer declared)	a case can be made for this lower classification	YES
4.1.4	Exterior Wet	EW	> 55 wet DCOF* (manufacturer declared)	service drives & spaces w/o high-speed doors & HVAC controls	YES
4.1.5	Oils/Greases	O/G	> 55 wet DCOF* (manufacturer declared)	this standard that impacts service drive & workshop environments	YES

Note: European (R-ratings) do not apply.

ANSI A326.3 Definitions for Environment of Use - below are the actual standards which impact automotive service environments and material selection.

4.1.3 Interior, Wet (IW+) Environment

4.1.3 Interior, Wet Plus: See Section 3.4. *Product shall be manufacturer-declared for this category* based on manufacturing parameters, internal quality control criteria, and manufacturer experience with similar surfaces. Attributes to consider include, but are not limited to, product size, texture, structure, and drainage. Products meeting Interior, Wet Plus criteria may require frequent maintenance to keep clean.

INFORMATIVE NOTE:

Possible Areas of Use: Subject to determination by specifier and the criteria in this standard, may include, but are not limited to, public showers, interior pool decks, locker rooms, **covered exterior areas**, steam rooms, “front of the house” applications in restaurants with an open kitchen, and in “front of the house” applications in quick service, fast-casual, and self-service restaurants, food areas in gas stations, **and other similar areas where floors may be walked upon when wet if clean, maintained, and free of standing water or other contaminants.**

INFORMATIVE NOTE: In the absence of superseding manufacturer-declared product use classification, **excepting where measured DCOF is lower due to the impact of structure on the DCOF measurement, it is generally accepted that hard surface flooring in this category should have at least a wet DCOF value of 0.50***, with factors other than wet DCOF also taken into consideration. Such factors include, but are not limited to, **expected contaminants, drainage, surface structure, effect of structure on the DCOF measurement, number of grout joints (see Informative Note in Section 9.1.7), traction-enhancing features, and intended use, in addition to the other criteria in this standard. As the suitability of the installed hard surface flooring depends significantly on such factors, a single normative DCOF limit value is not provided.**

4.1.4 Exterior, Wet (EW) Environment

4.1.4 Exterior, Wet: See Section 3.4. *Product shall be manufacturer-declared for this category* based on manufacturing parameters, internal quality control criteria, and manufacturer experience with similar surfaces. Attributes to consider include, but are not limited to, product size, texture, structure, and additionally in wet applications, drainage. Products meeting Exterior, Wet criteria may require frequent maintenance to keep clean.

INFORMATIVE NOTE:

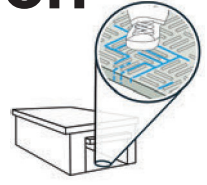
Possible Areas of Use: Subject to determination by specifier and the criteria in this standard, may include, but are not limited to, level outdoor living spaces including pool decks, walkways, patios, and sidewalks, where such floors may be walked upon when wet (excluding ice or snow) if level, clean, maintained, and free of standing water or other contaminants.

INFORMATIVE NOTE: In the absence of superseding manufacturer-declared product use classification, **excepting where measured DCOF is lower due to the impact of structure on the DCOF measurement, it is generally accepted that hard surface flooring in this category should have at least a minimum wet DCOF value of 0.55***, with factors other than wet DCOF also taken into consideration. Such factors include, but are not limited to, **expected contaminants, drainage, surface structure, effect of structure on the DCOF measurement, number of grout joints (see Informative Note in Section 9.1.7), traction-enhancing features, and intended use, in addition to the other criteria in this standard. As the suitability of the installed hard surface flooring depends significantly on such factors, a single normative DCOF limit value is not provided.**

Environment of Use & Product Selection

AutoStoneUSA provides you the right product to address your STF risk.

Made in the

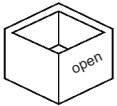


Automotive Service & WorkShop Environment Examples

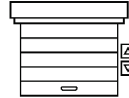
The design of your service drive and workshop impact the risk you face when operating and doing business. Depending on risk tolerance as measured against ANSI standards: 4.1.3 (IW+), 4.1.4 (EW), and 4.1.5 (O/G), AutoStoneUSA has a tile system to help you mitigate your STF risk. AutoStoneUSA has solutions which are manufacturer declared for use in 4.1.5 (O/G), which states...**"level areas regularly exposed to automotive fluids..."**

All AutoStoneUSA service drive & workshop series include our "manufacturers declaration" which inform you of the appropriate environment of use. AutoStoneUSA is designed and manufactured for the automotive space. We are automotive flooring experts.

Examples of Automotive Service & WorkShop Environments



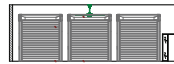
Service Drive without (4) full-height walls & doors.
Any structure without (4) full-height walls & doors which control exposure to elements would default to exterior wet (EW), or oils/grease (O/G).



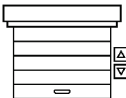
WorkShop with Limited Vehicle Access Doors
Large footprint tech workshops with limited vehicle doors that minimize exterior elements from impacting workshop conditions can be rated as interior, wet, plus (IW+).



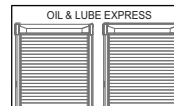
Service Drive with Manual Roll-Up doors.
Manual roll-up doors do not control the environment throughout daily use and would default to exterior wet (EW), or oils/grease (O/G).



WorkShop with California Bay Design
Large footprint tech workshops with multiple vehicle doors that do not minimize exterior elements from impacting workshop conditions should be considered as exterior, wet (EW) or oils, grease (O/G) environments.



Service Drive with High-Speed Roll-Up doors.
High-speed doors can control the environment throughout daily use. High speed doors provide ownership an environment that may rate for interior, wet, plus (IW+), exterior wet (EW), or oils/grease (O/G).



Oil and Lube Express.
An Oil Lube where environment is regularly exposed to automotive fluids, and is exposed to weather conditions due to door access design would be rated both/either (EW), or oils/grease (O/G).

4.1.5 Oils, Grease (O/G) Environment

4.1.5 Oils/Greases: See Section 3.4. *Product shall be manufacturer-declared for this category* where oil, grease, and/or fats may be present, based on manufacturing parameters, internal quality control criteria, and manufacturer experience with similar surfaces. Attributes to consider include, but are not limited to, product size, texture, structure, and drainage. Products meeting Oils/Greases criteria may require frequent maintenance to keep clean.

INFORMATIVE NOTE:

Possible Areas of Use: Subject to determination by specifier and the criteria in this standard, may include, but are not limited to, level areas regularly exposed to automotive fluids, "back of the house" fast food or family style restaurants, food preparation areas with grills or deep-fry equipment, and any area where oil, grease, and/or fats may be present so long as such floors are level, regularly cleaned, maintained, and free of standing water and contaminant build-up.

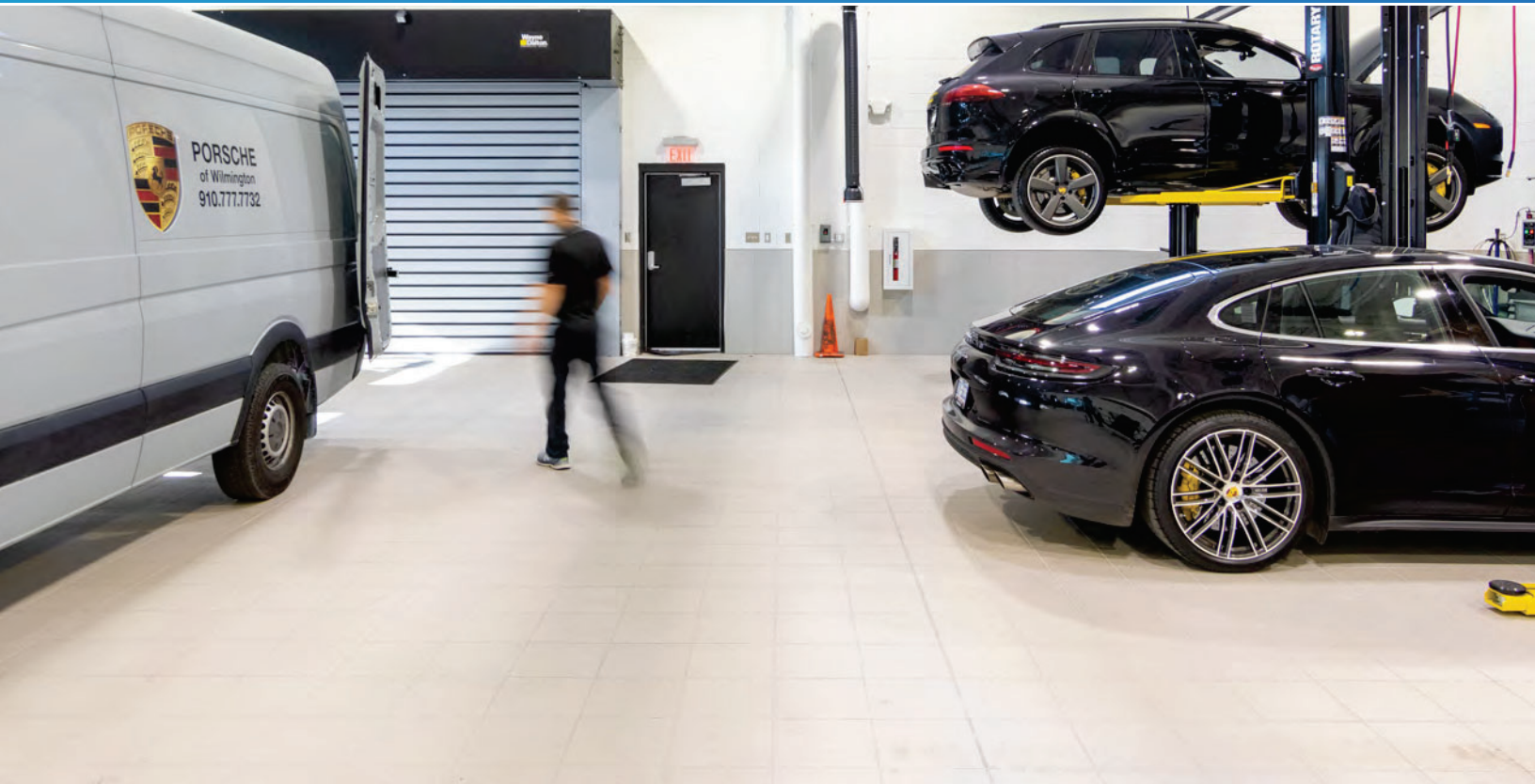
INFORMATIVE NOTE: In the absence of superseding manufacturer-declared product use classification, excepting where measured DCOF is lower due to the impact of structure on the DCOF measurement, it is generally accepted that hard surface flooring in this category should have **at least a minimum wet DCOF value of 0.55***, with factors other than wet DCOF also taken into consideration. Such factors include, but are not limited to, expected contaminants, drainage, surface structure, effect of structure on the DCOF measurement, number of grout joints (see Informative Note in Section 9.1.7), traction-enhancing features, and intended use, in addition to the other criteria in this standard. As the suitability of the installed hard surface flooring depends significantly on such factors, a single normative DCOF limit value is not provided.

MANUFACTURER-DECLARED USE

34 Manufacturer-Declared Product Use Classification: *Manufacturer shall declare product use classification based on manufacturing parameters, internal quality control criteria, their experience with similar surfaces, and the criteria in this standard for all surfaces classified under Sections 4.1.3, 4.1.4, and 4.1.5, mosaic surfaces, and flooring where surface structure (e.g. three-dimensionally patterned*

or profiled surfaces) results in misleading DCOF measurements due to test device constraints. Optionally, surfaces classified under Section 4.1.2 shall also be permitted to be manufacturer-declared. Hard surface flooring manufacturer shall define internal product selection criteria (for example, but not in limitation, DCOF limit values established using this test method or other test methods, internal reference standards and practices, and/or the presence of abrasive grain and/or surface structure) for each product where the manufacturer-declared product use classification is not based on DCOF criteria developed per this standard. Regardless of declared product use classification, specifier shall determine materials appropriate for specific project conditions, considering by way of example, but not in limitation, type of use, traffic, expected contaminants, expected maintenance, expected wear,³ and manufacturers' guidelines and recommendations.

INFORMATIVE NOTE: *Normative measured DCOF limit values are not provided in this standard for exterior applications, interior ramps and inclines, pool decks, shower floors, or flooring that is contaminated with material other than water or where minimal or no footwear is used.*



brightfinish

ultra-cleanable technology



Brightfinish Ultra-Cleanable Technology

Brightfinish is a permanent sealant baked-in during kiln-firing process. The Brightfinish permanent sealant aids dealership with their cleaning practices by sealing surface micropores which trap and hold-on to rubber transfer, grease, oil or other contaminants.

Enhanced Impervious Surface Technology

An impervious tile is the highest performance standard in the porcelain tile industry. The definition of an impervious tile is a surface that absorbs moisture between 0.5% to 0.001%. At AutoStone, we think that 0.5% is too much absorbency, and in an automotive dealership will cause tiles to absorb oil, grease, petroleum, gasoline and other contaminants. When this happens, your tile surface will darken over use and this leads to potential hazards such as STF (slip, trip and fall) events. Petroleum and oils soaked surfaces can pose other hazards when not properly removed with regularly scheduled and proper cleaning practices. With the addition of our brightfinish we enhance our impervious tiles and reduce their absorbency to levels at the lowest end of the spectrum (0.001% or less). This means nothing is absorbed by an AutoStone workshop or service drive floor tile. AutoStone workshop floor systems are premium floor systems which are designed to resist staining and be easier to clean.

Limitations

Surface is a non-vitreous (impervious) enhanced porcelain tile. Oil, grease and all contaminants will remain on surface until properly cleaned and removed.

Not for use in other in EW or O/G Product Use Applications. These include environments such as carwash areas where high volume water and/or high pressure water systems are used.

Recommended Grout Joint Sizing

EnviroShop12USA is a rectified tile which provides you precise tile sizing. This allows you to achieve tighter grout joints. However, your grout joint is dependent upon flat floor conditions. EnviroShop12USA is rectified to **295 mm x 295 mm**.

The recommended grout width is typically 1/8" (or 3 mm) to 3/16" (or 5 mm) depending on substrate conditions. Below is a Flat Floor (FF) chart which outlines what grout width you can achieve based on your FF rating.

Tile Size	1/4" grout or larger	3/16" grout or larger	1/8" grout or larger
12" x 12"	FF25 or 1/4" over 10'	FF32 or 3/16" over 10'	FF50 or 1/8" over 10'

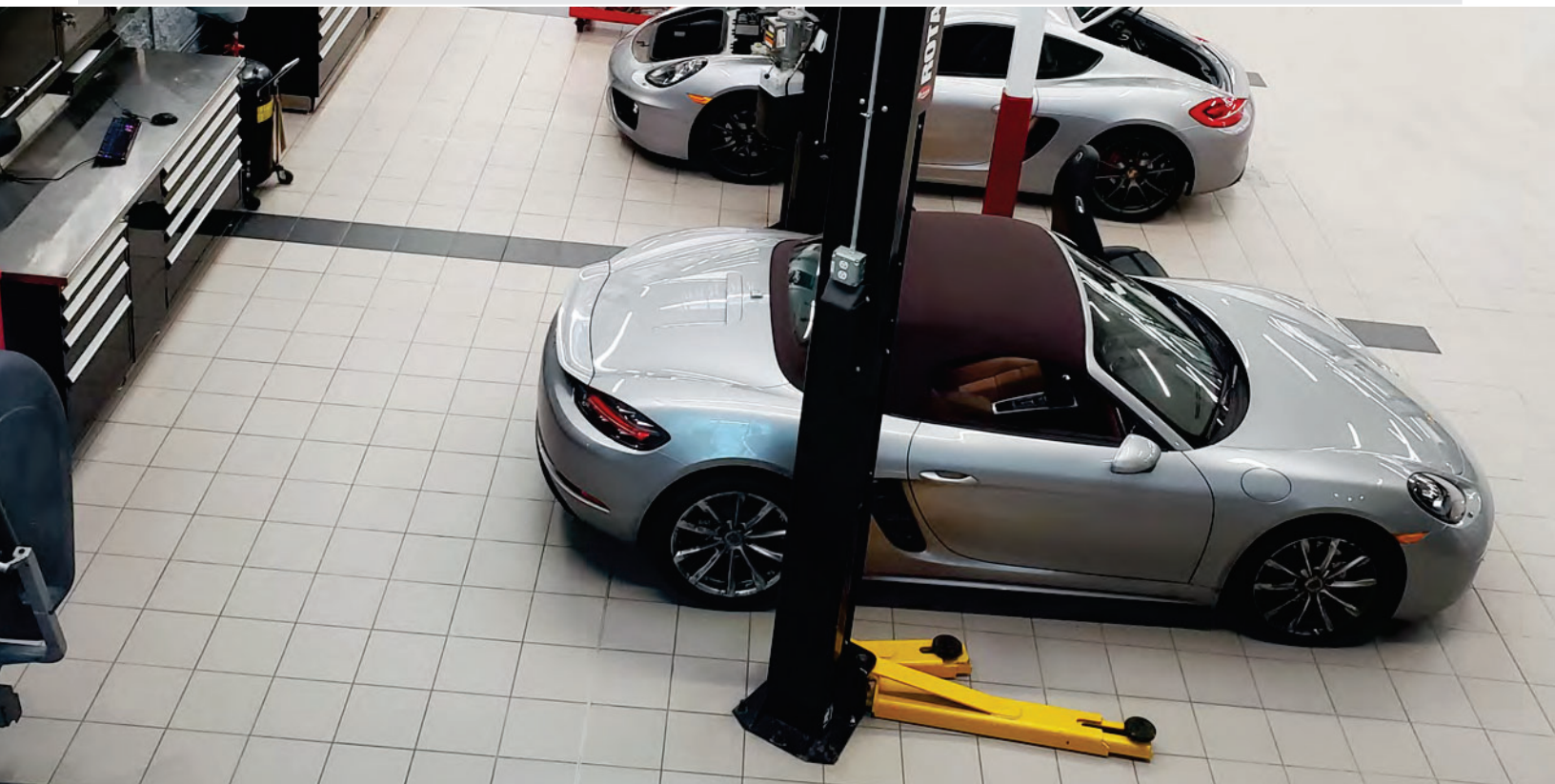
Enviroshop Sizes and Thicknesses in Metric & U.S. Nominal

*thickness tolerance is (+) or (-) 1 mm

Smoke Grey	Alloy Grey	Carbon Black
12" x 12"* (nominal)	12" x 12"* (nominal)	12" x 12"* (nominal)
295 mm x 295 mm	295 mm x 295 mm	295 mm x 295 mm
9.0 mm thick	9.0 mm thick	9.0 mm thick

* = U.S. Nominal Dimension

12" x 12" (U.S. Nominal Dimension) = 11 5/8" x 11 5/8" (Nominal Fractional Inch Size)





IMPORTANT AND EXACT SIZING INFORMATION

* = U.S. Nominal Dimension



12" x 12"*



- Made in USA
- Made in USA
- Made in USA
- Alloy Grey
- Smoke Grey
- Carbon Black

* thickness tolerance is: (+) or (-) 1 mm

Nominal Size: 12" x 12" (approximate). 11 5/8" x 11 5/8" (US nominal fraction size).

Actual Size: 295 mm x 295 mm with +/- of 1 mm tolerance.

Reference: CAL5

Material Availability

- **MADE and STOCKED in USA**
Product stocked in USA warehouse. 1 week preparation + ground (US) shipping.

ALL PRODUCTION 2023 AND PRIOR YEARS

* = U.S. Nominal Dimension

Nominal Size: 12" x 12" (approximate). 11 7/8" x 11 7/8" (US nominal fraction size).

Actual Size: 297 mm x 297 mm with +/- of 1 mm tolerance.

Reference: CAL7

Material Availability

AutoStoneUSA has limited inventory in CAL 7 (297x297 tile) to support installations with exact size tile. If your project includes warranty and repairs and was supplied with materials prior to 2024, please discuss your tile sizing so we can support you with the appropriate size tile to support your project.

Contact: hello@autostoneusa.com
214-393-4875 phone