

autostone
floor systems

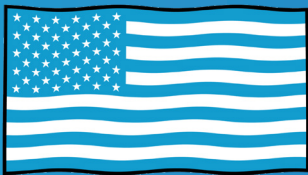


Clean.Tech.USA

Subaru Tile Guide

2024.04.01 Edition

Subaru Brand Compliant Program
AutoStoneUSA.com/Subaru



MADE IN AMERICA



SUPPLY CHAIN STRONG

AutoStoneUSA.com

© 2024 AutoStone Floor Systems, All Rights Reserved.

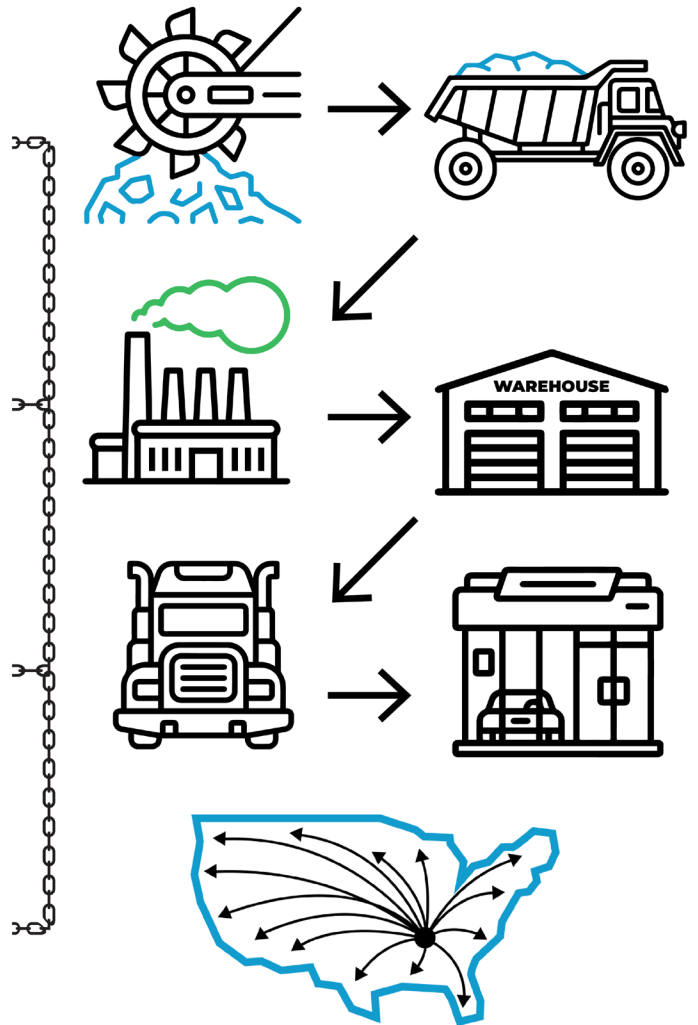




Q2KD

QUARRY TO KILN DISTRIBUTION MODEL

- 1** **LOCALLY SOURCED & LOCALLY QUARRIED**
 - ✓ Elimination of trans-ocean shipping
 - ✓ US jobs, shorter supply chain
- 2** **DOMESTICALLY PRODUCED & LOCALLY WAREHOUSED**
 - ✓ Less shipping
 - ✓ Reduced carbon footprint
- 3** **CONSOLIDATED SHIPPING DIRECT TO YOUR DEALERSHIP**
 - ✓ Eliminates distribution shipping
 - ✓ Reduces use of fossil fuel
- 4** **DOMESTICALLY PRODUCED SMARTER & EFFICIENT DISTRIBUTION**
 - ✓ Better for the environment
 - ✓ Saves you money





CT-1

Showroom & Customer Contact Areas

Series: Clean.Tech.USA

Color: Charcoal

Finish: Honed | Natural

Size: 24" x 24" (U.S. Nominal Dimensions)

ANSI A326.3:

Interior Dry (ID) & Interior Wet (IW)

> .42 DCOF Dry and > .42 DCOF Wet



USA
MANUFACTURED

brightfinish
ultra-cleanable technology

Below: actual color varies, example is only representative



Series: Laticrete Permacolor Select

Color: 45 Raven

Thinset: LHT Plus

AutoStone CT-1 (Subaru Showroom) Tiles Reduce Stains & Clean Easier

The Clean.Tech surface aids dealers with cleaning practices and enhances your showroom appearance. AutoStone tile is much easier to clean for Subaru dealers. AutoStone Clean.Tech eliminates concerns with your tile showing haze, dirt, grime, etc., (with proper cleaning practices). Tile does stain easily, especially with tire-bright, or similar tire dressing materials.

The result? Better appearing Subaru stores, happier dealers!



Click the image above for a Clean.Tech demonstration

Reduced Fossil Fuel Use And Reduced Carbon Footprint - AutoStoneUSA

AutoStoneUSA "Made in America" materials do more than reduce costs. We reduce carbon emissions by eliminating trans-ocean shipping. We source raw materials regionally and near our production facilities. We eliminate the import of raw materials from other countries which repeat the dependency and use of fossil fuels, and additional trans-ocean shipping.

Trans-ocean shipping is heavily dependent on over-stressed ports which include over-land trucking and transport. This further expands use of fossil-fuels. Additionally, AutoStoneUSA warehouses near our production and we eliminate shipping through distribution systems and instead ship directly to your project site.

The AutoStoneUSA Quarry to Kiln method significantly reduce carbon emissions.

- AutoStoneUSA manufactures with locally quarried and locally sourced raw materials
- AutoStoneUSA manufactures in state-of-the-art, energy, and environmentally efficient facilities
- AutoStoneUSA has significantly shortened our supply chain which reduces our carbon footprint and supply chain risk.
- The longer the supply chain, the greater the risk and larger the carbon footprint.
- AutoStoneUSA manufacturing creates American jobs, supports communities, and increases domestic investment.

No other tile company has committed to domestic (USA) production in support of the automotive retail facility like AutoStoneUSA. No other tile company supports your Subaru project better!



CT-1 & CWT-1 Charcoal

Series: Clean.TechUSA

Color: Charcoal

Finish: Honed | Natural

Size: 24" x 24" (U.S. Nominal Dimensions)

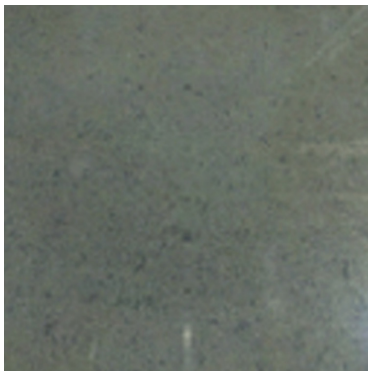


Below: actual color varies, example is only representative



Series: Laticrete Permacolor Select 45 Raven

Thinset: LHT Plus



CWT-2 Deep Grey - Charcoal

Series: Premier

Color: Deep Grey Charcoal

Finish: Polished

Size: 24" x 24" (U.S. Nominal Dimensions)

Below: actual color varies, example is only representative



Series: Laticrete Permacolor Select 42 Platinum

Thinset: LHT Plus



CWT-2 ALT - Grey

Series: Premier

Color: Grey

Finish: Polished

Size: 24" x 24" (U.S. Nominal Dimensions)

Below: actual color varies, example is only representative



Series: Laticrete Permacolor Select 89 Smoke Grey

Thinset: 4XLT



CWT-2 ALT - Grey

Series: Premier

Color: Grey

Finish: Honed | Natural

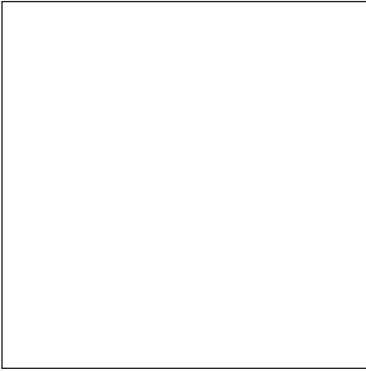
Size: 24" x 24" (U.S. Nominal Dimensions)

Below: actual color varies, example is only representative



Series: Laticrete Permacolor Select 89 Smoke Grey

Thinset: 4XLT



CWT-3 ALT Simply White

Series: WallTiles!
Color: Simply White
Finish: Satin
Size: 12" x 24" (U.S. Nominal Dimensions)

Below: actual color varies, example is only representative



Series: Laticrete Permacolor Select 44 Bright White
Thinset: 4XLT



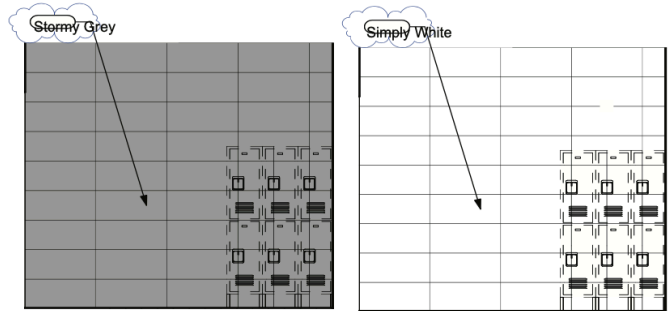
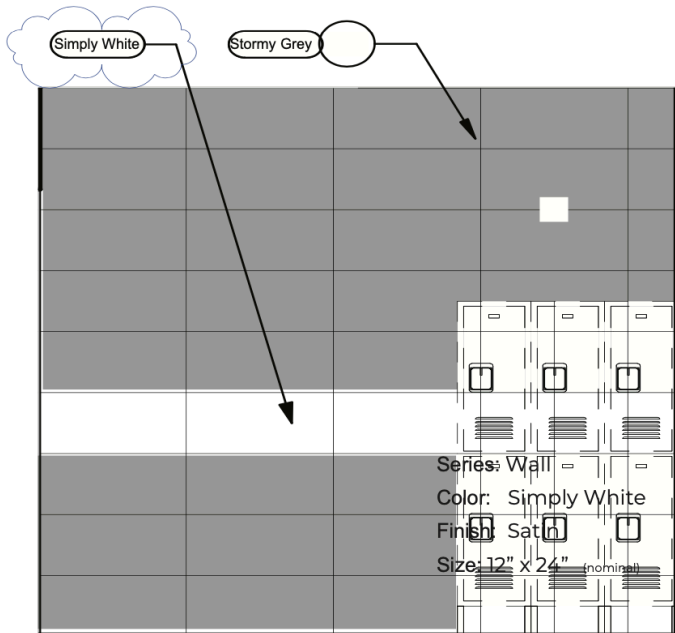
CWT-4 ALT Stormy Grey

Series: WallTiles!
Color: Stormy Grey
Finish: Glossy
Size: 12" x 24" (U.S. Nominal Dimensions)

Below: actual color varies, example is only representative



Series: Laticrete Permacolor Select 89 Smoke Grey
Thinset: LHT Plus





CWT-5 ALT Subway Simply White

Series: WallTiles! - Subway

Color: Bright White

Finish: Glossy

Size: 03" x 06" (U.S. Nominal Dimensions)

Below: actual color varies, example is only representative

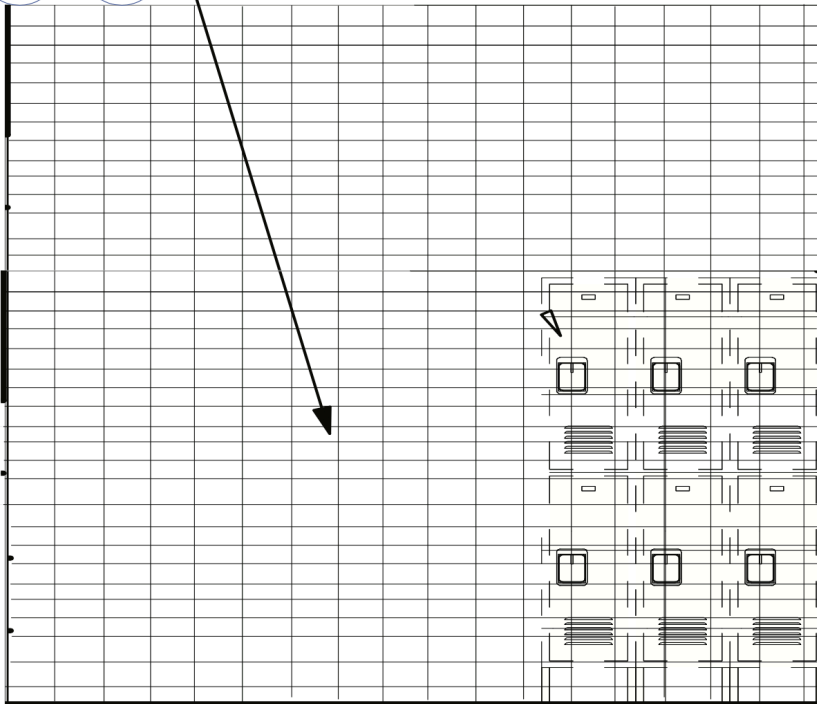


Series: Laticrete Permacolor Select 44 Bright White

Thinset: 4XLT



White Glossy





CWT-6 ALT Granita Grey

Series: WallTiles!

Color: Granita Grey

Finish: Satin

Size: 08" x 08" (U.S. Nominal Dimensions)

Below: actual color varies, example is only representative



Series: Laticrete Permacolor Select 89 Smoke Grey

Thinset: 4XLT



CWT-7 ALT Anthracite Grey

Series: WallTiles!

Color: Anthracite Grey

Finish: Satin

Size: 08" x 08" (U.S. Nominal Dimensions)

Below: actual color varies, example is only representative



Series: Laticrete Permacolor Select 42 Platinum

Thinset: LHT Plus



CT-6 Smoke Grey

Series: DriveSeries08USA
Color: Smoke Grey
Finish: Super.Grip3L.Brightfinish
Size: 8" X 8" (U.S. Nominal Dimensions)
Surface Traction Conforms to:
ANSI A326.3 Use Category:
4.1.3 Interior Wet Plus (IW+)
4.1.4 Exterior Wet (EW)
4.1.5 Oils/Greases (O/G).

Below: actual color varies, example is only representative



Series: Laticrete Permacolor Select 42 Platinum
Thinset: LHT Plus



CT-6 ALT Alloy Grey

Series: DriveSeries08USA
Color: Alloy Grey
Finish: Super.Grip3L.Brightfinish
Size: 8" X 8" (U.S. Nominal Dimensions)
Surface Traction Conforms to:
ANSI A326.3 Use Category:
4.1.3 Interior Wet Plus (IW+)
4.1.4 Exterior Wet (EW)
4.1.5 Oils/Greases (O/G).

Below: actual color varies, example is only representative



Series: Laticrete Permacolor 89 Smoke Grey
Thinset: 4XLT



CT-7 Carbon-Genesis Black

Series: DriveSeries08USA
Color: Carbon/Genesis Black
Finish: Super.Grip3L.Brightfinish
Size: 8" X 8" (U.S. Nominal Dimensions)
Surface Traction Conforms to:
ANSI A326.3 Use Category:
4.1.3 Interior Wet Plus (IW+)
4.1.4 Exterior Wet (EW)
4.1.5 Oils/Greases (O/G).

Below: actual color varies, example is only representative



Series: Laticrete Permacolor Select 45 Raven
Thinset: LHT Plus



Manufactured Declared Uses

Evaluate for use in automotive workshop and service drive environments

4.1.4 (Exterior, Wet) - level outdoor spaces walkways, sidewalks, where such floors may be walked upon when wet (excluding ice or snow) if level, clean, maintained and free of standing water or other contaminants.

4.1.5 (Oils/Greases) - level areas regularly exposed to automotive fluids, etc., so long as floors are level, regularly cleaned, maintained and free of standing water and contaminant build-up. Consult with your architect to

determine dealership practices. **Review ANSI A326.3 2021 standard.**

Declared Product Use & DCOF Requirement

Meets and exceeds .55 DCOF rating as required for ANSI A326.3 4.1.4 Exterior Wet (EW).



CT-6 ALT Smoke Grey

Series: eShop08USA
Color: Smoke Grey
Finish: Super.Grip.Brightfinish
Size: 8" X 8" (U.S. Nominal Dimensions)
Surface Traction Conforms to:
ANSI A326.3 Use Category:
4.1.3 Interior Wet Plus (IW+)
4.1.4 Exterior Wet (EW)
4.1.5 Oils/Greaseses (O/G).

Below: actual color varies, example is only representative



Series: Laticrete Permacolor Select 42 Platinum
Thinset: LHT Plus



CT-6 ALT Alloy Grey

Series: eShop08USA
Color: Alloy Grey
Finish: Super.Grip.Brightfinish
Size: 8" X 8" (U.S. Nominal Dimensions)
Surface Traction Conforms to:
ANSI A326.3 Use Category:
4.1.3 Interior Wet Plus (IW+)
4.1.4 Exterior Wet (EW)
4.1.5 Oils/Greaseses (O/G).

Below: actual color varies, example is only representative



Series: Laticrete Permacolor 89 Smoke Grey
Thinset: 4XLT



CT-7 ALT Carbon-Genesis Black

Series: eShop08USA
Color: Carbon/Genesis Black
Finish: Super.Grip.Brightfinish
Size: 8" X 8" (U.S. Nominal Dimensions)
Surface Traction Conforms to:
ANSI A326.3 Use Category:
4.1.3 Interior Wet Plus (IW+)
4.1.4 Exterior Wet (EW)
4.1.5 Oils/Greaseses (O/G).

Below: actual color varies, example is only representative



Series: Laticrete Permacolor Select 45 Raven
Thinset: LHT Plus



Manufactured Declared Uses

Evaluate for use in automotive workshop and service drive environments

4.1.4 (Exterior, Wet) - level outdoor spaces walkways, sidewalks, where such floors may be walked upon when wet (excluding ice or snow) if level, clean, maintained and free of standing water or other contaminants.

4.1.5 (Oils/Greases) - level areas regularly exposed to automotive fluids, etc., so long as floors are level, regularly cleaned, maintained and free of standing water and contaminant build-up. Consult with your architect to

determine dealership practices. **Review ANSI A326.3 2021 standard.**

Declared Product Use & DCOF Requirement

Meets and exceeds .55 DCOF rating as required for ANSI A326.3 4.1.4 Exterior Wet (EW).



CT-6 Smoke Grey

Series: Enviroshop12USA
Color: Smoke Grey
Finish: Traction.Brightfinish
Size: 12" x 12" (U.S. Nominal Dimensions)
Surface Traction Conforms to:
ANSI A326.3 Use Category:
4.1.3 Interior Wet Plus (IW+)

Below: actual color varies, example is only representative



Series: Laticrete Permacolor Select 42 Platinum
Thinset: LHT Plus



CT-6 ALT Alloy Grey

Series: Enviroshop12USA
Color: Alloy Grey
Finish: Traction.Brightfinish
Size: 12" x 12" (U.S. Nominal Dimensions)
Surface Traction Conforms to:
ANSI A326.3 Use Category:
4.1.3 Interior Wet Plus (IW+)

Below: actual color varies, example is only representative



Series: Laticrete Permacolor Select 89 Smoke Grey
Thinset: 4XLT



CT-7 Carbon Black

Series: Enviroshop12USA
Color: Carbon Black
Finish: Traction.Brightfinish
Size: 12" x 12" (U.S. Nominal Dimensions)
Surface Traction Conforms to:
ANSI A326.3 Use Category:
4.1.3 Interior Wet Plus (IW+)

Below: actual color varies, example is only representative



Series: Laticrete Permacolor Select 45 Raven
Thinset: LHT Plus



Manufactured Declared Uses

Evaluate for use in automotive workshop and service drive environments
4.1.3 (Interior Wet Plus) - Covered exterior areas, where such floors may be walked upon when wet if clean, maintained and free of standing water or other contaminants.

Consult with your architect to determine dealership practices.

Review ANSI A326.3 2021 standard.

Declared Product Use & DCOF Requirement

Meets and exceeds .50 DCOF rating as required for ANSI A326.3 4.1.3 Interior Wet Plus (IW+).



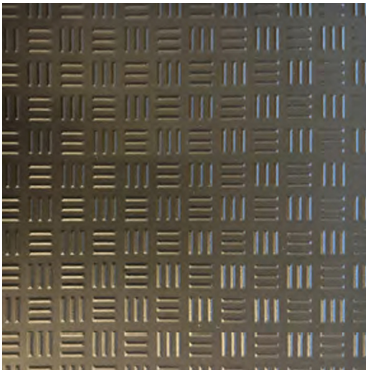
CT-6 ALT Alloy Grey

Series: DriveSeries12USA
Color: Alloy Grey
Finish: Traction3L.Brightfinish
Size: 12" x 12" (U.S. Nominal Dimensions)
Surface Traction Conforms to:
ANSI A326.3 Use Category:
4.1.3 Interior Wet Plus (IW+)
4.1.4 Exterior Wet (EW)
4.1.5 Oils/Greases (O/G).

Below: actual color varies, example is only representative



Series: Laticrete Permacolor Select 89 Smoke Grey
Thinset: 4XLT



CT-7 ALT Carbon Black

Series: DriveSeries12USA
Color: Carbon Black
Finish: Traction3L.Brightfinish
Size: 12" x 12" (U.S. Nominal Dimensions)
Surface Traction Conforms to:
ANSI A326.3 Use Category:
4.1.3 Interior Wet Plus (IW+)
4.1.4 Exterior Wet (EW)
4.1.5 Oils/Greases (O/G).

Below: actual color varies, example is only representative



Series: Laticrete Permacolor Select 45 Raven
Thinset: LHT Plus



Manufactured Declared Uses

Evaluate for use in automotive workshop and service drive environments

4.1.4 (Exterior, Wet) - level outdoor spaces walkways, sidewalks, where such floors may be walked upon when wet (excluding ice or snow) if level, clean, maintained and free of standing water or other contaminants.

4.1.5 (Oils/Greases) - level areas regularly exposed to automotive fluids, etc., so long as floors are level, regularly cleaned, maintained and free of standing water and contaminant build-up. Consult with your architect to determine dealership practices. **Review ANSI A326.3 2021 standard.**

Declared Product Use & DCOF Requirement

Meets and exceeds .55 DCOF rating as required for ANSI A326.3 4.1.4 Exterior Wet (EW).

Made in the USA.

Our headquarters are in Texas, but we manufacture in Tennessee! Made in the USA assures your project of on-time delivery, quality product, supply chain integrity, and reduced carbon footprint!

Build with AutoStone.

Our program supports Subaru dealers with highest-quality, most affordable and comprehensive floor tile system for your dealership project. Affordable, high-quality, and easy to do business with are what you will experience with AutoStone.

Warranty.

AutoStoneUSA tiles come with a materials warranty which confirms our high-quality product conforms with ANSI porcelain tile standards. If you suspect any tile as not being correct - DO NOT INSTALL IT! Take a picture and send it immediately to your Subaru support team. We will help you right away!

Installation.

AutoStoneUSA has tile installation recommendations with quality control (QC) standards which deliver better results. When you receive your project quote it will include our manufacturer recommended tile installation practices.

Cleaning & Maintenance.

AutoStoneUSA provides detailed and specific tile cleaning and maintenance recommendations. Ask for, or download the Subaru "Culture of Clean" which helps dealers maintain your dealership in a "like new" appearance.

Subaru Brand Info:

Website: AutoStoneUSA.com
Email: subaru@autostoneusa.com
Subaru Line: 214-393-4875

Request For Quote Info:

Website: AutoStoneUSA.com/RFQ-Subaru

Contact Information:

Aaron Standley & Barry Wells
subaru@autostoneusa.com
aaron@autostoneusa.com
barry@autostoneusa.com
Aaron: 214-393-4868
Barry: 214-393-4862
Main: 214-393-4875



SUBARU®