

**autostone**  
floor systems

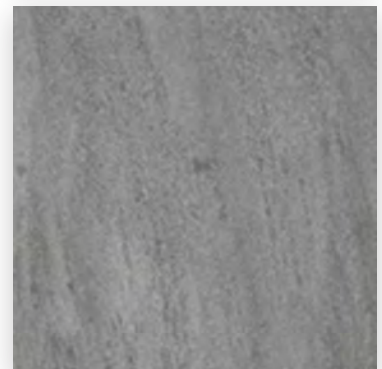
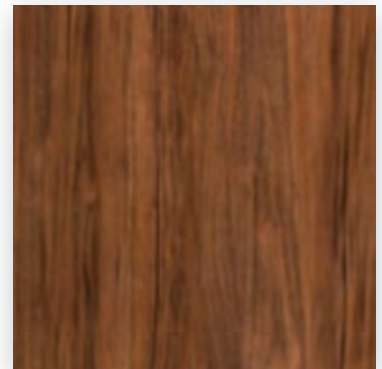
**JLR**

**Jaguar Land Rover**  
Technical  
Specifications Guide  
*2023.11 Edition*

ARCH Retail Program Approved Floor  
System [AutoStoneUSA.com/JLR](http://AutoStoneUSA.com/JLR)

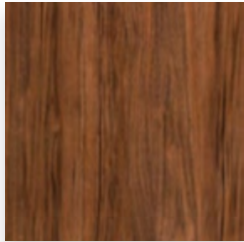
**AutoStoneUSA.com**

© 2023 AutoStone Floor Systems, All Rights Reserved.



**autostone**  
floor systems

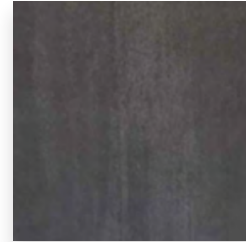
**JLR**



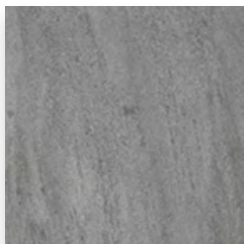
JLR101



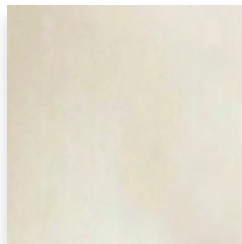
JLR102



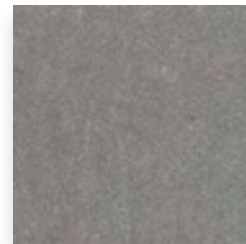
JLR106



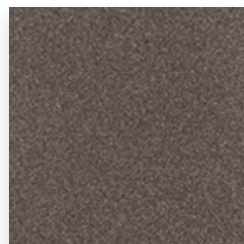
JLR107



JLR108



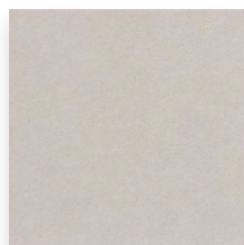
JLR109



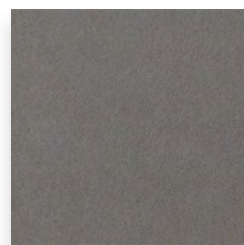
JLR110



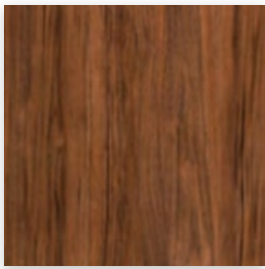
JLR111



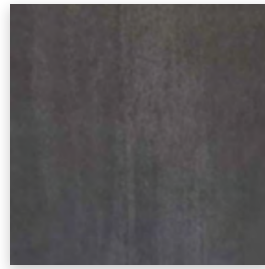
JLR112



JLR113



**JLR 101**  
**Color:** Dijan Walnut  
**Finish:** Natural  
**Size:** 24" x 24" (nominal)



**JLR 106**  
**Color:** Nero Charcoal  
**Finish:** Brightfinish | Matte  
**Size:** 24" x 24" (nominal)



**JLR 102**  
**Color:** iWhite  
**Finish:** Polished  
**Size:** 24" x 24" (nominal)



**JLR 107**  
**Color:** Toscane Deep Grey  
**Finish:** Brightfinish | Natural  
**Size:** 24" x 24" (nominal)

**ANSI A326.3 Declared Use:**  
 4.1.1 Interior, Dry (ID)  
 4.1.2 Interior Wet (IW)

## technical specifications

	SPECS	TEST METHOD	INDUSTRY STANDARD	AUTOSTONEUSA
	WATER ABSORPTION	ASTM C373	≤0.5%	≤0.4%
	CHEMICAL RESISTANCE	ASTM C650	A tile sample is placed in continuous contact with a variety of chemicals for 24 hours. No sample must show visible defects.	NOT AFFECTED
	D.C.O.F. AcuTest®	ANSI A326.3	≥0.42% WET	≥0.42% WET
	STAIN RESISTANCE	ASTM C1378	Surfaces are exposed to staining agents for 24 hours followed by four cleaning procedures. Results are recorded post cleaning.	NOT AFFECTED
	BREAKING STRENGTH	ASTM C648	≥250 lb/ft2	8mm ≥300 lb/ft2 10mm ≥400 lb/ft2
	RESISTANCE TO FREEZE	ASTM C1026	A tile sample is subjected to repeated processes of freezing and thawing. Sample must show no visible defects.	RESISTANT
	WARPAGE EDGE	ASTM C485	Warpage ± 0.4% or ± 0.05 in	≥± 0.4%
	WARPAGE DIAGONAL	ASTM C485	Warpage ± 0.4% or ± 0.07 in	≥± 0.4%
	WARPAGE EDGE	ASTM C485	Warpage ± 0.5% or ± 0.07 in	≥± 0.5%
	WARPAGE DIAGONAL	ASTM C485	Warpage ± 0.5% or ± 0.07 in	≥± 0.5%
	WEDGING	ASTM C502	± 0.25% or ± 0.03 in	≥± 0.25%
	THICKNESS	ASTM C499	Range: ± 0.04 in	≤0.04 in

**V2**  
**SLIGHT VARIATION**  
 Clearly distinguishable differences in texture and/or pattern with similar colors.



## JLR 108

**Color:** iWhite  
**Finish:** Brightfinish | Matte  
**Size:** 24" x 24" (nominal)















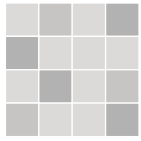
## JLR 109

**Color:** Grigio Deep Grey  
**Finish:** Brightfinish | Matte  
**Size:** 12" x 24" (nominal)

### technical specifications

**ANSI A326.3 Declared Use:**  
 4.1.1 Interior, Dry (ID)  
 4.1.2 Interior Wet (IW)

	SPECS	TEST METHOD	INDUSTRY STANDARD	AUTOSTONEUSA
	WATER ABSORPTION	ASTM C373	≤0.5%	≤0.4%
	CHEMICAL RESISTANCE	ASTM C650	A tile sample is placed in continuous contact with a variety of chemicals for 24 hours. No sample must show visible defects.	NOT AFFECTED
	D.C.O.F. AcuTest®	ANSI A326.3	≥0.42% WET	≥0.42% WET
	STAIN RESISTANCE	ASTM C1378	Surfaces are exposed to staining agents for 24 hours followed by four cleaning procedures. Results are recorded post cleaning.	NOT AFFECTED
	BREAKING STRENGTH	ASTM C648	≥250 lb/ft <sup>2</sup>	8mm ≥300 lb/ft <sup>2</sup> 10mm ≥400 lb/ft <sup>2</sup>
	RESISTANCE TO FREEZE	ASTM C1026	A tile sample is subjected to repeated processes of freezing and thawing. Sample must show no visible defects.	RESISTANT
	WARPAGE EDGE	ASTM C485	Warpage ± 0.4% or ± 0.05 in	≥± 0.4%
	WARPAGE DIAGONAL	ASTM C485	Warpage ± 0.4% or ± 0.07 in	≥± 0.4%
	WARPAGE EDGE	ASTM C485	Warpage ± 0.5% or ± 0.07 in	≥± 0.5%
	WARPAGE DIAGONAL	ASTM C485	Warpage ± 0.5% or ± 0.07 in	≥± 0.5%
	WEDGING	ASTM C502	± 0.25% or ± 0.03 in	≥± 0.25%
	THICKNESS	ASTM C499	Range: ± 0.04 in	≤0.04 in



**V2**  
**SLIGHT VARIATION**  
 Clearly distinguishable differences in texture and/or pattern with similar colors.



## JLR 110 Alloy Grey

**Series:** eShop2USA  
**Color:** Alloy Grey  
**Finish:** SLR Shop Textured  
**Size:** (U.S. Nominal Dimensions)  
 8" x 8"



## JLR 111 Genesis -Carbon Black

**Series:** eShop2USA  
**Color:** Genesis-Carbon Black  
**Finish:** SLR Shop Textured  
**Size:** (U.S. Nominal Dimensions)  
 8" x 8"



### Product Use Category 4.1.3. Interior, Wet Plus (IW+)

**4.1.3 (Interior, Wet Plus)** Evaluate for interior use in automotive workshop and service drive environments with high speed doors and tech locker rooms. Enviroshop is medium traction surface. For interior applications, with good drainage. Floors walked on when wet if level, clean, maintained and free of standing water or other contaminants. Should be cleaned with frequent maintenance to keep clean.

SURFACES DIMENSION AND QUALITIES	ANSI 326.3:2017 4.1.3 Interior Wet Plus >.50 DCOF STANDARDS	RESULT "AutoStone Results"
Sides W 300X300 mm Thickness 9.0 mm	UNI EN ISO 10545-2	+/- 0,1% +/- 1,5%
Surface qualities: percentage of acceptable tiles per lot	UNI EN ISO 10545-2	> 95%
Straightness of sides	UNI EN ISO 10545-2	+/- 0,0%
Rectangularity	UNI EN ISO 10545-2	+/- 0,1%
Surface flatness: centre curvature	UNI EN ISO 10545-2	+/- 0,2%
Surface flatness: edge curvature	UNI EN ISO 10545-2	+/- 0,1%
Surface flatness: warpage	UNI EN ISO 10545-2	+/- 0,2%
<b>PHYSICAL PROPERTIES</b>		
Water mass absorbed in %	UNI EN ISO 10545-3	0,03
Average breaking load (N)	UNI EN ISO 10545-4	2500
Average <u>moduls</u> of rupture (N/mm2)	UNI EN ISO 10545-4	51
Average breaking strength (N)	UNI EN ISO 10545-4	2458
Abrasion volume (mm3)	UNI EN ISO 10545-6	152
Thermal expansion coefficient	UNI EN ISO 10545-8	6.2 MK <sup>1</sup>
Thermal shock resistance	UNI EN ISO 10545-9	resistant
Frost resistance	UNI EN ISO 10545-12	resistant
Resistance of the colors in the light	DIN 51094	resistant
<b>CHEMICAL PROPERTIES</b>		
Resistance to chemical products	UNI EN ISO 10545-13	resistant
Stain resistance	UNI EN ISO 10545-14	Class 5



## JLR 110 Alloy Grey

**Series:** DriveSeriesUSA  
**Color:** Alloy Grey  
**Finish:** Brightfinish | R12 Textured  
**Surface:** High Traction  
**Size:** 8" x 8" (U.S. Nominal Dimensions)



## JLR 111 Genesis -Carbon Black

**Series:** DriveSeriesUSA  
**Color:** Genesis-Carbon Black  
**Finish:** Brightfinish | R12 Textured  
**Surface:** High Traction  
**Size:** 8" x 8" (U.S. Nominal Dimensions)

driveseries  
USA

brightfinish  
ultra-cleanable technology



MADE IN  
USA

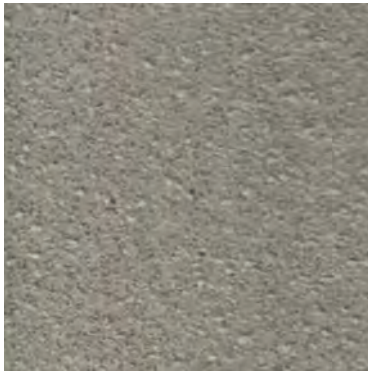
driveseries  
USA

brightfinish  
ultra-cleanable technology

### Product Use Category 4.1.3. Interior, Wet Plus (IW+)

**4.1.3 (Interior, Wet Plus)** Evaluate for interior use in automotive workshop and service drive environments with high speed doors and tech locker rooms. Enviroshop is medium traction surface. For interior applications, with good drainage. Floors walked on when wet if level, clean, maintained and free of standing water or other contaminants. Should be cleaned with frequent maintenance to keep clean.

SIZES DIMENSION AND QUALITIES	ANSI 326.3:2017 4.1.3 Interior Wet Plus >.50 DCOF	
	STANDARDS	RESULT "AutoStone Results"
Sides W 300X300 mm      Thickness 9.0 mm Sides W 200X200 mm      Thickness 9.1 mm	UNI EN ISO 10545-2	+/- 0,1%   +/- 1,5%
Surface qualities: percentage of acceptable tiles per lot	UNI EN ISO 10545-2	> 95%
Straightness of sides	UNI EN ISO 10545-2	+/- 0,0%
Rectangularity	UNI EN ISO 10545-2	+/- 0,1%
Surface flatness: centre curvature	UNI EN ISO 10545-2	+/- 0,2%
Surface flatness: edge curvature	UNI EN ISO 10545-2	+/- 0,1%
Surface flatness: warpage	UNI EN ISO 10545-2	+/- 0,2%
<b>PHYSICAL PROPERTIES</b>		
Water mass absorbed in %	UNI EN ISO 10545-3	0,03
Average breaking load (N)	UNI EN ISO 10545-4	2500
Average <u>moduls</u> of rupture (N/mm2)	UNI EN ISO 10545-4	51
Average breaking strength (N)	UNI EN ISO 10545-4	2458
Abrasion volume (mm3)	UNI EN ISO 10545-6	152
Thermal expansion coefficient	UNI EN ISO 10545-8	6.2 MK <sup>1</sup>
Thermal shock resistance	UNI EN ISO 10545-9	resistant
Frost resistance	UNI EN ISO 10545-12	resistant
Resistance of the colors in the light	DIN 51094	resistant
<b>CHEMICAL PROPERTIES</b>		
Resistance to chemical products	UNI EN ISO 10545-13	resistant
Stain resistance	UNI EN ISO 10545-14	Class 5



## JLR 110 Alloy Grey

Series: [Enviroshop](#)

Color: Alloy Grey

Finish: Brightfinish | Textured

Surface: Medium Traction

Size: 12" x 12" (U.S. Nominal Dimensions)

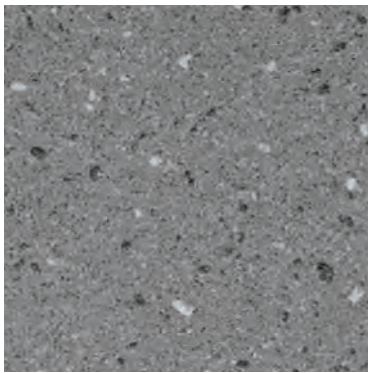


Below: actual color varies, example is only representative



Grout: Laticrete Permacolor Select 89 Smoke Grey

Thinset: LHT Plus



## JLR 110 Smoke Grey

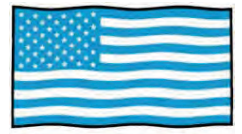
Series: [Enviroshop](#)

Color: Smoke Grey

Finish: Brightfinish | Textured

Surface: Medium Traction

Size: 12" x 12" (U.S. Nominal Dimensions)



MADE IN USA

Below: actual color varies, example is only representative



Grout: Laticrete Permacolor Select 89 Smoke Grey

Thinset: LHT Plus



## JLR 111 Carbon Black

Series: [Enviroshop](#)

Color: Carbon Black

Finish: Brightfinish | Textured

Surface: Medium Traction

Size: 12" x 12" (U.S. Nominal Dimensions)



Below: actual color varies, example is only representative



Grout: Laticrete Permacolor Select 89 Smoke Grey

Thinset: LHT Plus



### Material Availability

- Stocked USA ■ Alloy Grey
- Stocked USA ■ Smoke Grey
- Stocked USA ■ Carbon Black
- **STOCKED USA**  
Product stocked in USA warehouse  
1 week preparation + ground shipping

#### Manufacturer

AutoStone Floor Systems

#### Product Use Category 4.1.3 Interior, Wet Plus (IW+)

Evaluate for interior use in automotive workshop and service drive environments with high speed doors and tech locker rooms. Enviroshop is medium traction surface. For interior applications, with good drainage. Floors walked on when wet should be level, clean, maintained and free of standing water or other contaminants. Should be cleaned with frequent maintenance to keep clean.

#### DCOF

Meets and exceeds .50 DCOF rating as required for ANSI A326 4.1.3 (IW+)



## CT-6 Alloy Grey

**Series:** DriveSeriesUSA  
**Color:** Alloy Grey  
**Finish:** SLR Shop Textured **Size:**  
 12" x 12" (nominal size)



Below: actual color varies, example is only representative



**Grout:** Laticrete Permacolor 89 Smoke Grey  
**Thinset:** LHT Plus



## CT-7 Genesis-Carbon Black

**Series:** DriveSeriesUSA  
**Color:** Genesis-Carbon Black  
**Finish:** SLR Shop Textured  
**Size:** 12" x 12" (nominal size)



Below: actual color varies, example is only representative



**Grout:** Laticrete Permacolor Select 89 Smoke Grey  
**Thinset:** LHT Plus

### Description

A permanent enhanced porcelain technology floor system. Elevated traction provides a better surface to manage STF (slip, trip, and fall) risk in your automotive service drive, workshop and tech locker room shower areas. See declared uses below. Should be cleaned with frequent maintenance to keep clean and free of contamination and debris when dealership is operating. Spot spills should be removed immediately and not left on surface. Floor cleaning should include use of de-greasing chemical, floor scrubber sweeper machine with wet vacuum to suck-up dirty water and debris as part of cleaning process.

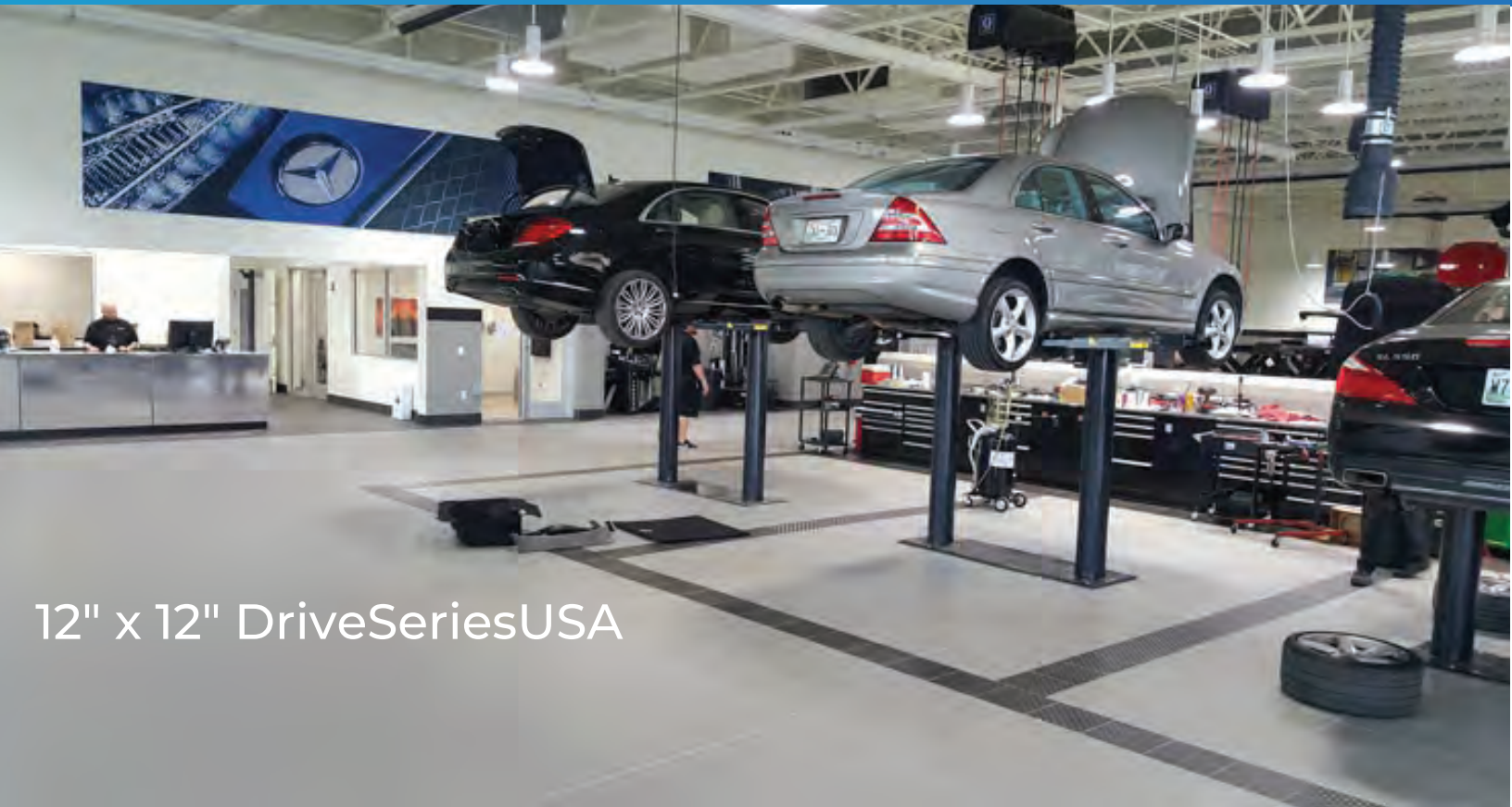
### Advantages

1. Advanced surface technology to better manage STF (slip, trip & fall) risk.
2. Surface has repeating lines elevated above the bed of the tile. Designed for greater foot, shoe-sole traction.
3. Will not permanently stain or darken when properly cleaned.

### Product Use Category 4.1.3. Interior, Wet Plus (IW+)

**4.1.3 (Interior, Wet Plus)** Evaluate for interior use in automotive workshop and service drive environments with high speed doors and tech locker rooms. Enviroshop is medium traction surface. For interior applications, with good drainage. Floors walked on when wet if level, clean, maintained and free of standing water or other contaminants. Should be cleaned with frequent maintenance to keep clean.





**brightfinish**  
ultra-cleanable technology

### **Brightfinish Ultra-Cleanable Technology**

Brightfinish is a permanent sealant baked-in during kiln-firing process. The Brightfinish permanent sealant aids dealership with their cleaning practices by sealing surface micropores which trap and hold-on to rubber transfer, grease, oil or other contaminants.

### **Enhanced Impervious Surface Technology**

An impervious tile is the highest performance standard in the porcelain tile industry. The definition of an impervious tile is a surface that absorbs moisture between 0.5% to 0.001%. At AutoStone, we think that 0.5% is too much absorbency, and in an automotive dealership will cause tiles to absorb oil, grease, petroleum, gasoline and other contaminants. When this happens, your tile surface will darken over use and this leads to potential hazards such as STF (slip, trip and fall) events. Petroleum and oils soaked surfaces can pose other hazards when not properly removed with regularly scheduled and proper cleaning practices. With the addition of our brightfinish we enhance our impervious tiles and reduce their absorbency to levels at the lowest end of the spectrum (0.001% or less). This means nothing is absorbed by an AutoStone workshop or service drive floor tile. AutoStone workshop floor systems are premium floor systems which are designed to resist staining and be easier to clean.

### **Limitations**

Surface is a non-vitreous (impervious) enhanced porcelain tile. Oil, grease and all contaminants will remain on surface until properly cleaned and removed.

*Not for use in carwash areas where high volume water and/or high pressure water systems are used.*

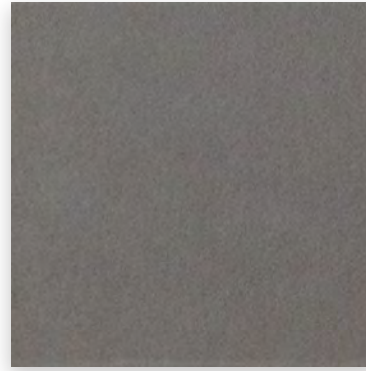


## JLR 112

**Color:** Granita Grey

**Finish:** Satin

**Size:** 8" X 8" (nominal)












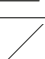


## JLR 113

**Color:** Anthracite Grey

**Finish:** Satin

**Size:** 8" X 8" (nominal)

### TECHNICAL SPECIFICATIONS

	SPECS	TEST METHOD	INDUSTRY STANDARD	AUTOSTONE VALUES
	WATER ABSORPTION	ASTM C373	≤0.5%	≤0.4%
	CHEMICAL RESISTANCE	ASTM C650	A tile sample is placed in continuous contact with a variety of chemicals for 24 hours. No sample must show visible defects.	NOT AFFECTED
	D.C.O.F. AcuTest®	ANSI A326.3	≥0.42% WET	≥0.42% WET
	STAIN RESISTANCE	ASTM C1378	Surfaces are exposed to staining agents for 24 hours followed by four cleaning procedures. Results are recorded post cleaning.	NOT AFFECTED
	BREAKING STRENGTH	ASTM C648	≥250 lb/ft2	8mm ≥300 lb/ft2 10mm ≥400 lb/ft2
	RESISTANCE TO FREEZE	ASTM C1026	A tile sample is subjected to repeated processes of freezing and thawing. Sample must show no visible defects.	RESISTANT
	WARPAGE EDGE	ASTM C485	Warpage ± 0.4% or ± 0.05 in	≥± 0.4%
	WARPAGE DIAGONAL	ASTM C485	Warpage ± 0.4% or ± 0.07 in	≥± 0.4%
	WARPAGE EDGE	ASTM C485	Warpage ± 0.5% or ± 0.07 in	≥± 0.5%
	WARPAGE DIAGONAL	ASTM C485	Warpage ± 0.5% or ± 0.07 in	≥± 0.5%
	WEDGING	ASTM C502	± 0.25% or ± 0.03 in	≥± 0.25%
	THICKNESS	ASTM C499	Range: ± 0.04 in	≤0.04 in

• Due to the inherent nature of fired porcelain tile, it is important to note that the coefficient of friction may vary within and between product runs.

### Contact Information

**Email:** [jlr@autostoneusa.com](mailto:jlr@autostoneusa.com)

**Phone:** 214-393-4875 (Main Phone)