

autostone
floor systems



GENESIS

Genesis

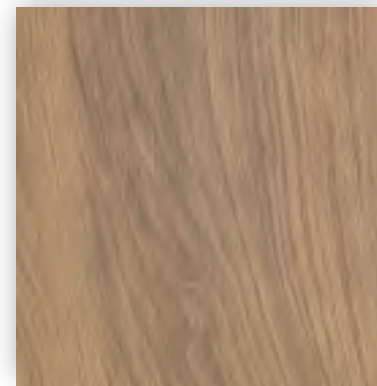
Showroom Tile Guide Book - GRD Preferred Partner

2024.01

Contains tile specifications, and program submittal information.



MADE IN AMERICA



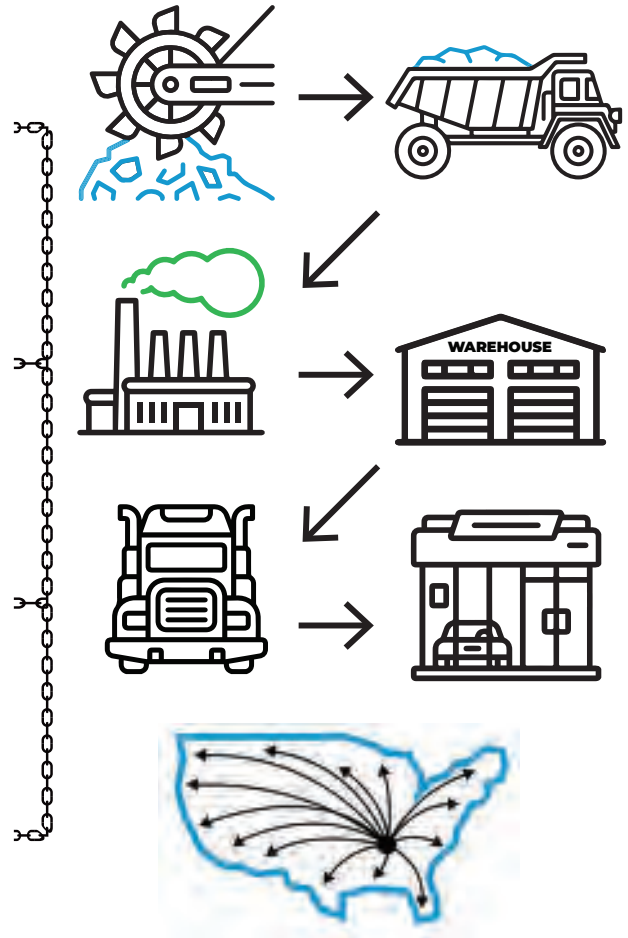
[AutoStoneUSA.com](https://www.AutoStoneUSA.com)

© 2024 AutoStone Floor Systems, All Rights Reserved.

Q2KD

QUARRY TO KILN DISTRIBUTION MODEL

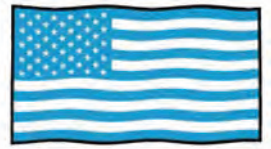
- 1** **LOCALLY SOURCED & LOCALLY QUARRIED**
 - ✓ Elimination of trans-ocean shipping
 - ✓ US jobs, shorter supply chain
- 2** **DOMESTICALLY PRODUCED & LOCALLY WAREHOUSED**
 - ✓ Less shipping
 - ✓ Reduced carbon footprint
- 3** **CONSOLIDATED SHIPPING DIRECT TO YOUR DEALERSHIP**
 - ✓ Eliminates distribution shipping
 - ✓ Reduces use of fossil fuel
- 4** **DOMESTICALLY PRODUCED SMARTER & EFFICIENT DISTRIBUTION**
 - ✓ Better for the environment
 - ✓ Saves you money





USA Made Porcelain Tile

Code: T1-A
Series: StudioWorks
Color: Topo Light
Finish: Honed | Natural
Size: 32" x 32" U.S. Nominal Dimensions



MADE IN USA



USA Made Porcelain Tile

Code: T1-B
Series: StudioWorks
Color: Anthracite Dark
Finish: Honed | Natural
Size: 32" x 32" U.S. Nominal Dimensions



MADE IN USA



USA Made Porcelain Tile

Code: T-2
Series: WoodPlank
Color: ElmWood
Finish: Natural
Size: 8" x 48" X U.S. Nominal Dimensions



MADE IN USA



River Rock Mosaic Tile

Code: PV-4
Series: Mosaic
Color: Black River Rock
Size: 12" x 12"

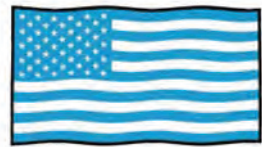


STOCKED IN USA



Workshop & Service Floor Tile

Code: T-5 (floor)
Series: DriveSeriesUSA
Color: Alloy Grey
Finish: traction | brightfinish
Size: 8" X 8" U.S. Nominal Dimensions



MADE IN USA



Workshop & Service Floor Tile

Code: T-6 (floor)
Series: DriveSeriesUSA
Color: Genesis Black
Finish: traction | brightfinish
Size: 8" X 8" U.S. Nominal Dimensions



MADE IN USA



Workshop & Service Wall Tile

Code: T-5A (wall | floor)
Series: eShop2USA
Color: Alloy Grey
Finish: Textured | brightfinish
Size: 8" X 8" U.S. Nominal Dimensions



MADE IN USA



Workshop & Service Floor Tile


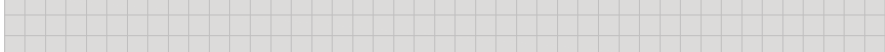

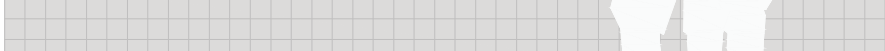
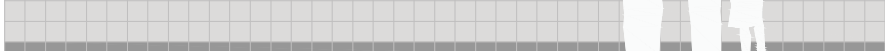
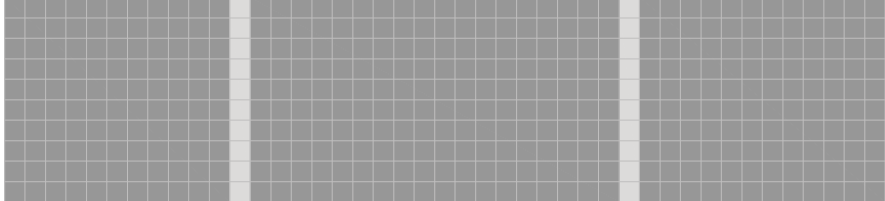
Code: T-6A (wall | floor)
Series: eShop2USA
Color: Genesis Black
Finish: Textured
Size: 8" X 8" U.S. Nominal Dimensions



MADE IN USA

SERVICE DEPARTMENT

PLAN, ELEVATION AND FINISHES

	<p>P-2</p>	<p>9 FT WALL</p>
	<p>T-5</p>	<p>8 FT WAINSCOT</p>
	<p>T-6</p>	
	<p>T-5</p>	
	<p>T-6</p>	
<p>ELEVATION VIEW</p>		
	<p>T-6</p>	<p>FLOOR PATTERN</p>
	<p>T-5</p>	





8" x 8"*

* = U.S. Nominal Dimension. Dimensions may vary within (+) or (-) 2mm in production/sizes.

* thickness tolerance is: (+) or (-) .5mm

Material Availability

MADE IN USA | Product stocked in USA warehouse. 1 week preparation + ground shipping.

Installation

See AutoStone recommended 09300 specifications for thinset standards on concrete substrate and AutoStone recommended installation standards. **Minimum of 95% thinset coverage on back of all tiles.**

Recommended Grout Color & Setting Materials by Laticrete

Alloy Grey

Grout: Laticrete Permacolor 89 Smoke Grey

Thinset: LHT Plus

Carbon Black

Grout: Laticrete Permacolor 45 Raven

Thinset: LHT Plus

Below: actual color varies, example is only representative



Below: actual color varies, example is only representative



Advantages

1. Advanced surface technology to better manage STF (slip, trip & fall) risk.
2. Surface has repeating lines elevated above the bed of the tile. Designed for greater foot, shoe-sole traction.
3. Will not permanently stain or darken when properly cleaned.

Manufactured Declared Uses

Evaluate for use in automotive workshop and service drive environments. Approved for use for all described environments below:

4.1.1 (Interior, Dry) - hard surface flooring not intended to be walked upon when wet shall have a dry DCOF value of 0.42*

4.1.2 (Interior, Wet) - hard surface flooring not intended to be walked upon when wet shall have a dry DCOF value of 0.42*

4.1.3 (Interior, Wet Plus) - examples of environments are: public showers, interior pool decks, locker rooms, covered exterior areas, steam rooms, "front of the house" applications in restaurants with an open kitchen, and in "front of the house" applications in quick service, fast-casual, and self-service restaurants, food areas in gas stations, and other similar areas where floors may be walked upon when wet if clean, maintained, and free of standing water or other contaminants. hard surface flooring not intended to be walked upon when wet shall have a dry DCOF value of 0.50*

4.1.4 (Exterior, Wet) - level outdoor spaces walkways, sidewalks, where such floors may be walked upon when wet (excluding ice or snow) if level, clean, maintained and free of standing water or other contaminants.

4.1.5 (Oils/Greases) - level areas regularly exposed to automotive fluids, etc., so long as such floors are level, regularly cleaned, maintained and free of standing water and contaminant build-up. Consult with your architect to determine dealership practices. **Review ANSI A326.3 2021 standard.**

Declared Product Use & DCOF Requirement

Meets and exceeds .55 DCOF rating as required for ANSI A326.3 4.1.3 Exterior Wet.

Description

A permanent enhanced porcelain technology floor system. Elevated traction provides a better surface to manage STF (slip, trip, and fall) risk in your automotive service drive, workshop and tech locker room shower areas. See declared uses below. Should be cleaned with frequent maintenance to keep clean and free of contamination and debris when dealership is operating. Spot spills should be removed immediately and not left on surface. Floor cleaning should include use of de-greasing chemical, floor scrubber sweeper machine with wet vacuum to suck-up dirty water and debris as part of cleaning process.

Culture of Clean

See recommended cleaning practices in AutoStone "Culture of Clean" Guidebook.



brightfinish
ultra-cleanable technology

Brightfinish Ultra-Cleanable Technology

Brightfinish is a permanent sealant baked-in during kiln-firing process. The Brightfinish permanent sealant aids dealership with their cleaning practices by sealing surface micropores which trap and hold-on to rubber transfer, grease, oil or other contaminants.

Enhanced Impervious Surface Technology

An impervious tile is the highest performance standard in the porcelain tile industry. The definition of an impervious tile is a surface that absorbs moisture between 0.5% to 0.001%. At AutoStone, we think that 0.5% is too much absorbency, and in an automotive dealership will cause tiles to absorb oil, grease, petroleum, gasoline and other contaminants. When this happens, your tile surface will darken over use and this leads to potential hazards such as STF (slip, trip and fall) events. Petroleum and oils soaked surfaces can pose other hazards when not properly removed with regularly scheduled and proper cleaning practices. With the addition of our brightfinish we enhance our impervious tiles and reduce their absorbency to levels at the lowest end of the spectrum (0.001% or less). This means nothing is absorbed by an AutoStone workshop or service drive floor tile. AutoStone workshop floor systems are premium floor systems which are designed to resist staining and be easier to clean.

Limitations

Surface is a non-vitreous (impervious) enhanced porcelain tile. Oil, grease and all contaminants will remain on surface until properly cleaned and removed.

Not for use in carwash areas where high volume water and/or high pressure water systems are used.



ANSI A326.3

American National Standard Test Method for Measuring Dynamic Coefficient of Friction of Hard Surface Flooring Materials—2021

Introduction

This introduction is not part of the American National Standard Test Method for Measuring Dynamic Coefficient of Friction of Hard Surface Flooring Materials, ANSI A326.3.

The dynamic coefficient of friction (DCOF) measurement provided in this standard is an evaluation of a hard surface flooring material under known conditions using a standardized testfoot material prepared according to a specific protocol. As such, it can provide a useful comparison of surfaces, but it does not predict the likelihood a person will or will not slip on a hard surface flooring material.

4.1.4 - Exterior, Wet (EW) -
describes service drive &
workshop environments with:

- * roof.
- * (4) walls.
- * roll-up doors (California Bay)
- * No doors.

AutoStoneUSA shop floor series:
driveseries - is rated for Exterior, Wet
Plus (EW) - see environment for use.

driveseries!
advanced surface technology

Note: DCOF rating is > .55

AutoStone driveseries is the only industrial tile with brightfinish, a permanent sealant, baked-in during manufacturing retards permanent staining and aids dealership cleaning practices.

This is a critical function as having a high-rated DCOF that is difficult to clean results in degradation of DCOF values as oils, grease, rubber transfer and other elements embed in the tile surface, darkening the tile because it is difficult to clean.

Later, moisture reactivates the embedded chemicals which decrease the DCOF rating and the floor becomes slippery and poses STF risk to dealership operations.

4.1.4 Exterior, Wet: See Section 3.4. Product shall be manufacturer-declared for this category based on manufacturing parameters, internal quality control criteria, and manufacturer experience with similar surfaces. Attributes to consider include, but are not limited to, product size, texture, structure, and additionally in wet applications, drainage. Products meeting Exterior, Wet criteria may require frequent maintenance to keep clean.

INFORMATIVE NOTE:

Possible Areas of Use: Subject to determination by specifier and the criteria in this standard, may include, but are not limited to, level outdoor living spaces including pool decks, walkways, patios, and sidewalks, where such floors may be walked upon when wet (excluding ice or snow) if level, clean, maintained, and free of standing water or other contaminants.

INFORMATIVE NOTE: *In the absence of superseding manufacturer-declared product use classification, excepting where measured DCOF is lower due to the impact of structure on the DCOF measurement, it is generally accepted that hard surface flooring in this category should have at least a minimum wet DCOF value of 0.55*, with factors other than wet DCOF also taken into consideration. Such factors include, but are not limited to, expected contaminants, drainage, surface structure, effect of structure on the DCOF measurement, number of grout joints (see Informative Note in Section 9.1.7), traction-enhancing features, and intended use, in addition to the other criteria in this standard. As the suitability of the installed hard surface flooring depends significantly on such factors, a single normative DCOF limit value is not provided.*

NOTE: *Exterior, Wet labeling does not refer to frost resistance. For ceramic tile, refer to ANSI A137.1 for frost resistance criteria.*



4.1.5 - Oils/Greases (O/G) - describes service drive, workshops, oil & lube change environments with:

- * roof.
- * (4) walls.
- * high-speed doors.
- * roll-up doors.
- * no doors.

See other requirements for site conditions for a tile product to be used.

AutoStoneUSA shop floor series:



driveseries - is rated for Oils/Greases (O/G) - see environment for use.

Note: DCOF rating is > .55

Automotive workshops, oil & lube changing and other environments with exposure to grease, oil and such are subject to this standard.

Only driveseries by AutoStone meets these new ANSI declared used standards.

4.1.5

Oils/Greases: See Section 3.4. Product shall be manufacturer-declared for this category where oil, grease, and/or fats may be present, based on manufacturing parameters, internal quality control criteria, and manufacturer experience with similar surfaces. Attributes to consider include, but are not limited to, product size, texture, structure, and drainage. Products meeting Oils/Greases criteria may require frequent maintenance to keep clean.

INFORMATIVE NOTE:

Possible Areas of Use: Subject to determination by specifier and the criteria in this standard, may include, but are not limited to, level areas regularly exposed to automotive fluids, "back of the house" fast food or family style restaurants, food preparation areas with grills or deep-fry equipment, and any area where oil, grease, and/or fats may be present so long as such floors are level, regularly cleaned, maintained, and free of standing water and contaminant build-up.

INFORMATIVE NOTE: *In the absence of superseding manufacturer-declared product use classification, excepting where measured DCOF is lower due to the impact of structure on the DCOF measurement, it is generally accepted that hard surface flooring in this category should have at least a minimum wet DCOF value of 0.55* , with factors other than wet DCOF also taken in consideration. Such factors include, but are not limited to, expected contaminants, drainage, surface structure, effect of structure on the DCOF measurement, number of grout joints (see Informative Note in Section 9.1.7), traction-enhancing features, and intended use, in addition to the other criteria in this standard. As the suitability of the installed hard surface flooring depends significantly on such factors, a single normative DCOF limit value is not provided.*

Table 1: Product Use Classification

Classification	Reference Category	Criteria
Interior, Dry	ID	≥ 0.42 dry DCOF* (per Section 10.1)
Interior, Wet	IW	≥ 0.42 wet DCOF* (per Section 9.1) or Manufacturer-Declared
Interior, Wet Plus	IW+	Manufacturer-Declared
Exterior, Wet	EW	Manufacturer-Declared
Oils/Greases	O/G	Manufacturer-Declared



ANSI A326.3

American National Standard Test Method for Measuring Dynamic Coefficient of Friction of Hard Surface Flooring Materials—2021

Introduction

This introduction is not part of the American National Standard Test Method for Measuring Dynamic Coefficient of Friction of Hard Surface Flooring Materials, ANSI A326.3.

The dynamic coefficient of friction (DCOF) measurement provided in this standard is an evaluation of a hard surface flooring material under known conditions using a standardized testfoot material prepared according to a specific protocol. As such, it can provide a useful comparison of surfaces, but it does not predict the likelihood a person will or will not slip on a hard surface flooring material.

4.1.4 - Exterior, Wet (EW) -
describes service drive &
workshop environments with:

- * roof.
- * (4) walls.
- * roll-up doors (California Bay)
- * No doors.

AutoStoneUSA shop floor series:
driveseries - is rated for Exterior, Wet
Plus (EW) - see environment for use.



Note: DCOF rating is > .55

AutoStone driveseries is the only industrial tile with brightfinish, a permanent sealant, baked-in during manufacturing retards permanent staining and aids dealership cleaning practices.

This is a critical function as having a high-rated DCOF that is difficult to clean results in degradation of DCOF values as oils, grease, rubber transfer and other elements embed in the tile surface, darkening the tile because it is difficult to clean.

Later, moisture reactivates the embedded chemicals which decrease the DCOF rating and the floor becomes slippery and poses STF risk to dealership operations.

4.1.4

Exterior, Wet: See Section 3.4. Product shall be manufacturer-declared for this category based on manufacturing parameters, internal quality control criteria, and manufacturer experience with similar surfaces. Attributes to consider include, but are not limited to, product size, texture, structure, and additionally in wet applications, drainage. Products meeting Exterior, Wet criteria may require frequent maintenance to keep clean.

INFORMATIVE NOTE:

Possible Areas of Use: Subject to determination by specifier and the criteria in this standard, may include, but are not limited to, level outdoor living spaces including pool decks, walkways, patios, and sidewalks, where such floors may be walked upon when wet (excluding ice or snow) if level, clean, maintained, and free of standing water or other contaminants.

INFORMATIVE NOTE: *In the absence of superseding manufacturer-declared product use classification, excepting where measured DCOF is lower due to the impact of structure on the DCOF measurement, it is generally accepted that hard surface flooring in this category should have at least a minimum wet DCOF value of 0.55*, with factors other than wet DCOF also taken into consideration. Such factors include, but are not limited to, expected contaminants, drainage, surface structure, effect of structure on the DCOF measurement, number of grout joints (see Informative Note in Section 9.1.7), traction-enhancing features, and intended use, in addition to the other criteria in this standard. As the suitability of the installed hard surface flooring depends significantly on such factors, a single normative DCOF limit value is not provided.*

NOTE: *Exterior, Wet labeling does not refer to frost resistance. For ceramic tile, refer to ANSI A137.1 for frost resistance criteria.*



4.1.5 - Oils/Greases (O/G) - describes service drive, workshops, oil & lube change environments with:

- * roof.
- * (4) walls.
- * high-speed doors.
- * roll-up doors.
- * no doors.

See other requirements for site conditions for a tile product to be used.

AutoStoneUSA shop floor series:



driveseries - is rated for Oils/Greases (O/G) - see environment for use.

Note: DCOF rating is > .55

Automotive workshops, oil & lube changing and other environments with exposure to grease, oil and such are subject to this standard.

Only driveseries by AutoStone meets these new ANSI declared used standards.

4.1.5

Oils/Greases: See Section 3.4. Product shall be manufacturer-declared for this category where oil, grease, and/or fats may be present, based on manufacturing parameters, internal quality control criteria, and manufacturer experience with similar surfaces. Attributes to consider include, but are not limited to, product size, texture, structure, and drainage. Products meeting Oils/Greases criteria may require frequent maintenance to keep clean.

INFORMATIVE NOTE:

Possible Areas of Use: Subject to determination by specifier and the criteria in this standard, may include, but are not limited to, level areas regularly exposed to automotive fluids, “back of the house” fast food or family style restaurants, food preparation areas with grills or deep-fry equipment, and any area where oil, grease, and/or fats may be present so long as such floors are level, regularly cleaned, maintained, and free of standing water and contaminant build-up.

INFORMATIVE NOTE: *In the absence of superseding manufacturer-declared product use classification, excepting where measured DCOF is lower due to the impact of structure on the DCOF measurement, it is generally accepted that hard surface flooring in this category should have at least a minimum wet DCOF value of 0.55*, with factors other than wet DCOF also taken in consideration. Such factors include, but are not limited to, expected contaminants, drainage, surface structure, effect of structure on the DCOF measurement, number of grout joints (see Informative Note in Section 9.1.7), traction-enhancing features, and intended use, in addition to the other criteria in this standard. As the suitability of the installed hard surface flooring depends significantly on such factors, a single normative DCOF limit value is not provided.*

Table 1: Product Use Classification

Classification	Reference Category	Criteria
Interior, Dry	ID	≥ 0.42 dry DCOF* (per Section 10.1)
Interior, Wet	IW	≥ 0.42 wet DCOF* (per Section 9.1) or Manufacturer-Declared
Interior, Wet Plus	IW+	Manufacturer-Declared
Exterior, Wet	EW	Manufacturer-Declared
Oils/Greases	O/G	Manufacturer-Declared

Warranty

See AutoStoneUSA materials warranty.

Build with AutoStone

Our program supports Genesis dealers with the highest quality, most affordable and comprehensive floor tile system for your dealership project. Affordable, high-quality, and easy to do business with are what you will experience with AutoStone. Call us today to support your project.

Installation

See AutoStone recommended 09300 specifications for thinset standards on concrete substrate and AutoStone recommended installation standards.

AutoStoneUSA Support

AutoStone has a team that supports your Genesis project. If your call is not answered immediately, you will receive a return call no later than one business day. All emails are monitored and will be responded to quickly. We are here to support your project!

Genesis Team Info

Website: www.autostoneusa.com/genesis
Email: genesis@autostoneusa.com
Website: www.autostoneusa.com/rfq-genesis
Phone: 214-393-4875

Request for Quote

Barry Wells | Aaron Stanley | Robert Dixon |
Sarah Brockway

Contact Information

barry@autostoneusa.com
aaron@autostoneusa.com
robert@autostoneusa.com
sarah@autostoneusa.com

autostone



GENESIS

Mobile: 214-830-1206
Direct: 214-393-4862

Barry Wells
Barry Wells