

autostone usa



Mercedes-Benz EVolution Design Manual

AutoStoneUSA is a Mercedes-Benz EVolution brand and facility approved supplier for Passenger Cars and Light Trucks

Mercedes-Benz



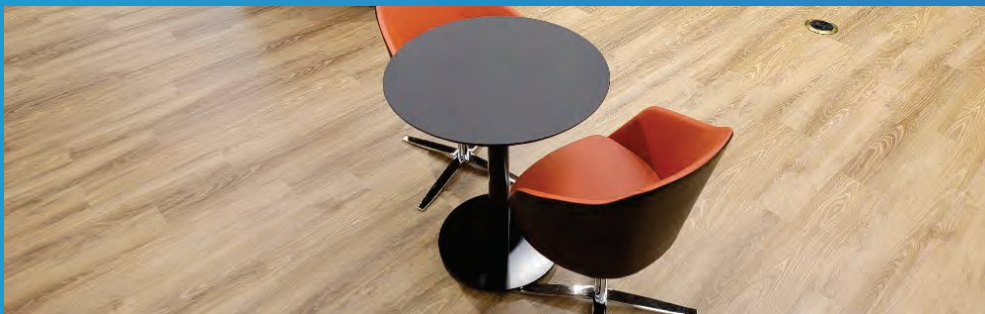
Mercedes-Benz Tile Guide

2026.05 Edition



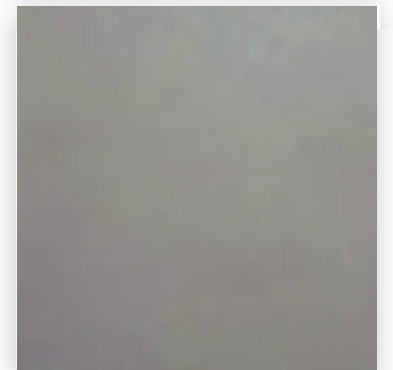
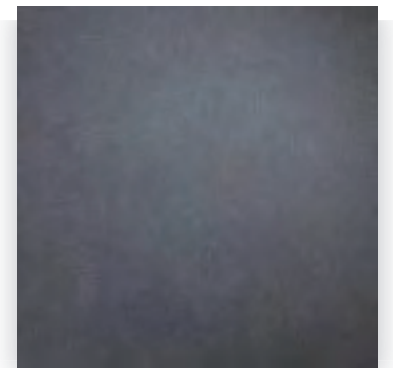
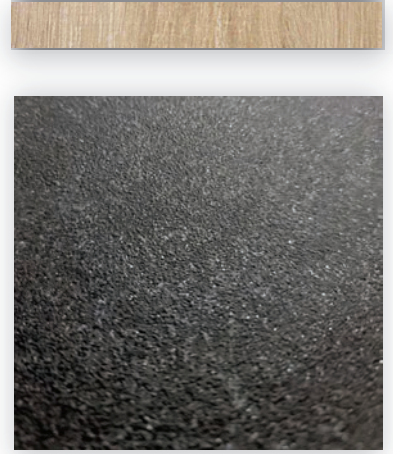
Made in USA

Mercedes-Benz Certified Evolution Image Program
AutoStoneUSA.com/Mercedes-Benz



AutoStoneUSA.com

© 2026 AutoStone Floor Systems, All Rights Reserved.





Q2KD

QUARRY TO KILN DISTRIBUTION MODEL

1 **LOCALLY SOURCED & LOCALLY QUARRIED**

- ✓ Elimination of trans-ocean shipping
- ✓ US jobs, shorter supply chain

2 **DOMESTICALLY PRODUCED & LOCALLY WAREHOUSED**

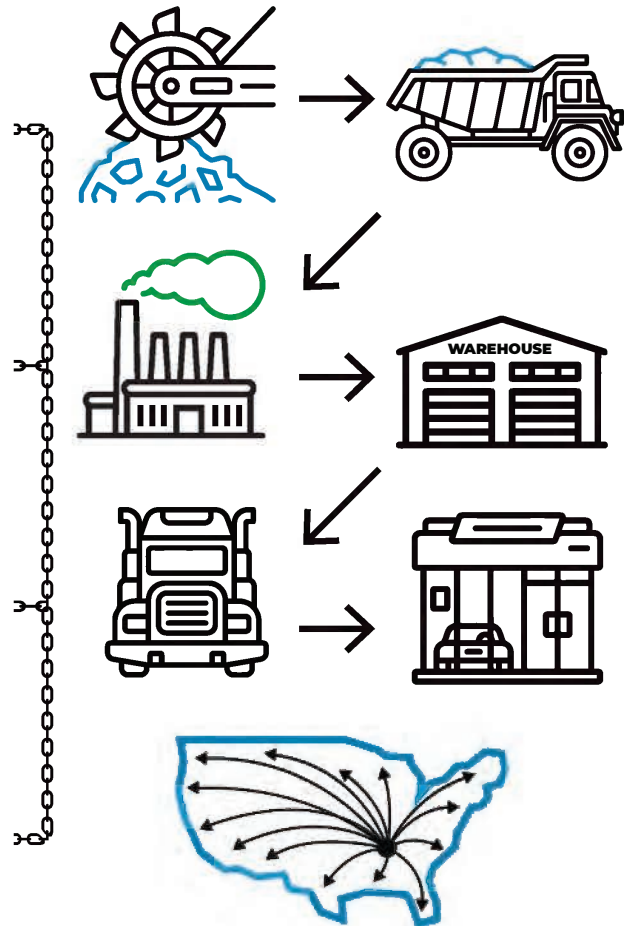
- ✓ Less shipping
- ✓ Reduced carbon footprint

3 **CONSOLIDATED SHIPPING DIRECT TO YOUR DEALERSHIP**

- ✓ Eliminates distribution shipping
- ✓ Reduces use of fossil fuel

4 **DOMESTICALLY PRODUCED SMARTER & EFFICIENT DISTRIBUTION**

- ✓ Better for the environment
- ✓ Saves you money



Made in the



FT-11

Showroom Vehicle Display Tile (Black Asphalt)

FT-12

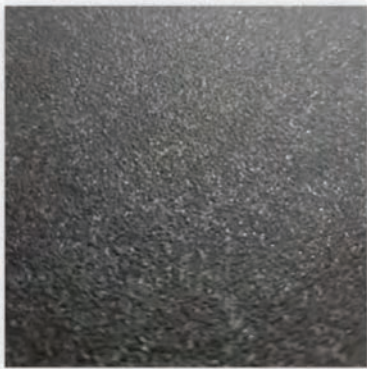
Showroom Vehicle Display Tile (Deep Grey Asphalt)



Mercedes-Benz



MADE IN USA



Black Asphalt

Code: FT-11

Series: AutohausUSA

Color: Black Asphalt

Finish: Textured Asphalt

Size: 24" x 24" (nominal)

Edge: Rectified profile (exact dimension)



Deep Grey Asphalt

Code: FT-12

Series: AutohausUSA

Color: Deep Grey Asphalt

Finish: Textured Asphalt

Size: 24" x 24" (nominal)

Edge: Rectified profile (exact dimension)



FT-13

Showroom Vehicle Display Tile (Nero)

FT-14

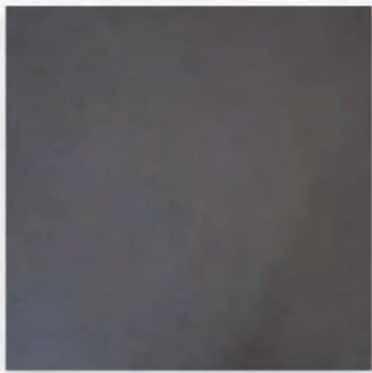
Showroom Vehicle Display Tile (City)



Mercedes-Benz



MADE IN USA



Nero

Code:FT-13

Series: AutobahnUSA

Color: Nero

Finish: Natural | Textured

Size: 24" x 24" (nominal)

Edge: Rectified profile (exact dimension)



City

Code:FT-14

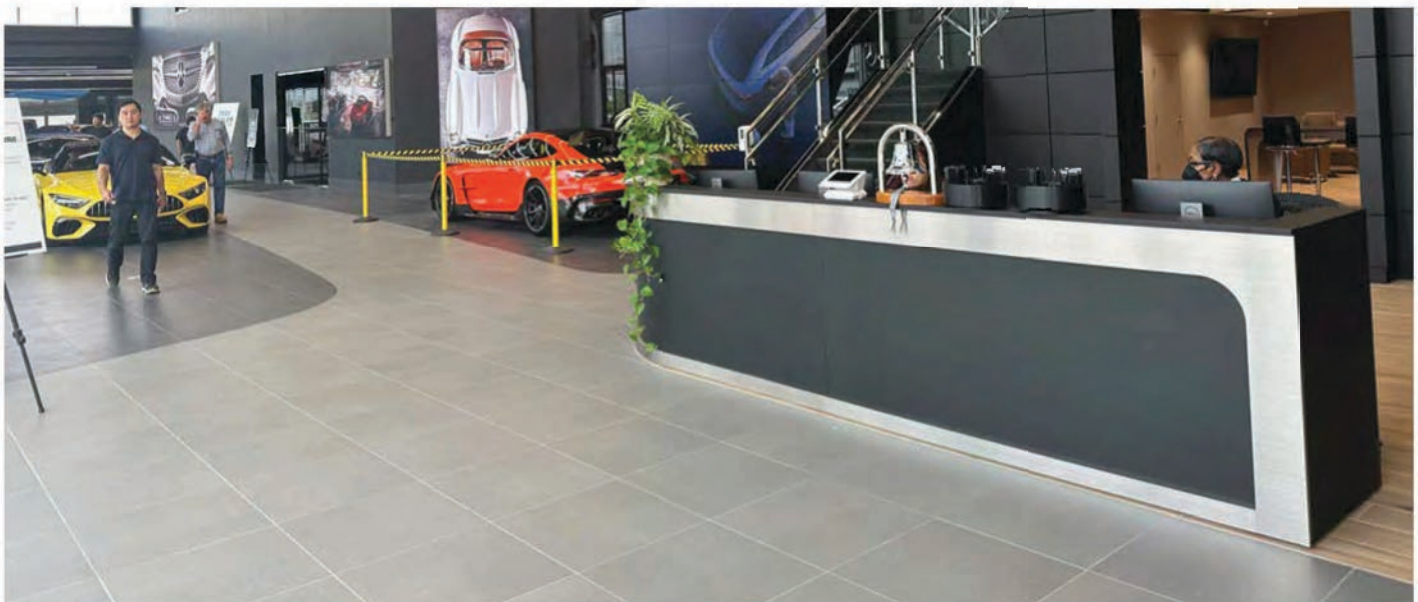
Series: AutobahnUSA

Color: City

Finish: Natural | Textured

Size: 24" x 24" (nominal)

Edge: Rectified profile (exact dimension)



FT-15

Showroom Vehicle Display Tile (Stuttgart Black)

FT-16

Showroom Vehicle Display Tile (Deutsche Graphit)



Mercedes-Benz



MADE IN USA



Stuttgart Black

Code:FT-15

Series: LombardUSA

Color: Stuttgart Black

Finish: Matte | Natural

Size: 12" x 24" | 24" x 24" (nominal)

Edge: Rectified profile (exact dimension)



Deutsche Graphit

Code:FT-16

Series: LombardUSA

Color: Deutsche Graphit

Finish: Matte | Natural

Size: 12" x 24" | 24" x 24" (nominal)

Edge: Rectified profile (exact dimension)



FT-23

Design Center / Lounge / Service Administration Areas & Customer Restrooms / Porcelain Woodplank Tile



Mercedes-Benz



Maple Harvest

Code: FT-23
Series: WoodPlankUSA
Color: Maple Harvest
Finish: Natural | Matte (wood texture)
Size: 8" x 48" (U.S. nominal) dimension



MADE IN USA

largeformat

Why go small?
A beautiful aesthetic.
Less grout = less grime.

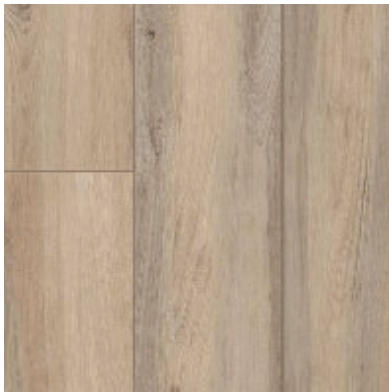


Can ship on same truck with all AutoStoneUSA tile.

PORCELAIN WoodPlank

Note: Largest format woodplank tile for Mercedes-Benz projects. Highest quality woodplank look and matches with Mercedes-Benz millwork, laminates and other wood finishes. Most preferred wood tile option by Mercedes-Benz dealers.

Below is Maple Harvest 08" x 48" Large format porcelain WoodPlank tile installed at Mercedes-Benz.



Gaineswood Honey Oak (ALT)



MADE IN USA

Code: FT-23
Series: MoodWoodPlank
Color: Gaineswood Honey Oak
Finish: Natural | Matte (wood texture)
Size: 6" x 36" (U.S. Nominal Dimensions)

Can ship on same truck with all AutoStoneUSA tile.

PORCELAIN WoodPlank

Note: this is a porcelain tile and not RED BODY (Daltile woodplank is a RED BODY CLAY ceramic tile (not porcelain).

FT-23

**Design Center / Lounge / Service Administration Areas
& Customer Restrooms / LVT - Luxury Vinyl Tile
Woodplank Design**



Mercedes-Benz



Maple Beech

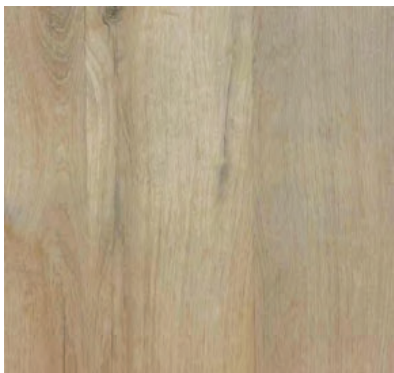
- Code:** FT-23
- Series:** LV WOODPLANK AUTOMOTIVE COLLECTION
- LVT Type:** SPC (stone panel composition) - rigid board.
- Installation:** Click together - floating floor.
- Color:** Maple Beech
- Finish:** Natural | Matte (wood texture)
- Size:** 7" x 48" (U.S. nominal) dimension
- Thickness:** 5.5 mm (overall) = 4 + 1.5 IXPE
- Wear Layer:** 22 ml wear layer



Unilin click together

LUXURY VINYL TILE - SPC - (rigid board) with click together installation with floating floor design for WoodPlank Option.

Below is Maple Beech 7" x 48" LVT (SPC - Stone Panel Composition) installed at Mercedes-Benz.



Birch Maple - Discretionary Use / Non-Customer Contact / Break Rooms / Parts / Operations

- Code:** FT-23
- Series:** LV WOODPLANK AUTOMOTIVE COLLECTION
- Installation:** Glue Down LVT Material - Adhesive is NOT supplied by AutoStoneUSA
- Color:** Birch Maple
- Finish:** Natural | Matte (wood texture)
- Size:** 7.25" x 48" (U.S. nominal) dimension
- Thickness:** 2.5 mm
- Wear Layer:** 22 ml wear layer | 0.55 mm

LUXURY VINYL TILE - glue down LVT material. Affordable material for non-customer contact areas.



Series: EnviroShop12USA
Color: Alloy Grey
Finish: Traction.Brightfinish
Size: 12" x 12"
Surface Traction Conforms to:

ANSI A326.3
 4.1.3 Interior Wet Plus (IW+).



Series: EnviroShop12USA
Color: Smoke Grey
Finish: Traction.Brightfinish
Size: 12" x 12"
Surface Traction Conforms to:

ANSI A326.3
 4.1.3 Interior Wet Plus (IW+).

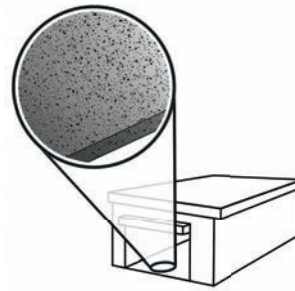


Series: EnviroShop12USA
Color: Carbon Black
Finish: Traction.Brightfinish
Size: 12" x 12"
Surface Traction Conforms to:

ANSI A326.3
 4.1.3 Interior Wet Plus (IW+).



F-8 | FT-30, 31, 32, 33



EnviroShop12USA provides you a permanent floor for your service drive, workshop, tech locker rooms, and any area where you need a durable floor with a textured surface to help you manage your STF (slip, trip, and fall) risk.

EnviroShop12USA is Made in the USA and provides automotive dealers a

more affordable option than other surface finish options. When ordered and shipped on the same truck with your showroom tile, Enviroshop12USA is equal to or less than temporary epoxy coatings.

We recommend you price compare your automotive project to include Enviroshop12USA in your service drive or workshop. We offer dealers a better solution for the most important and interactive space in your dealership, - the service drive.

With EnviroShop12USA you a permanent floor that helps manage your STF risk and can be cleaned and maintained in a "like new" appearance for the life of your dealership..

Advantages

1. Our original workshop floor with textured surface.
2. Surface texture is elevated above the surface bed for easier cleaning.
3. Will not permanently stain or darken when properly cleaned.
4. This product has:

slipresistant
textured floor surfaces

AutoStoneUSA Manufactured Declared Use

4.1.3 Interior, Wet Plus (IW+) - evaluate for interior use in automotive workshop and service drive environments with high speed doors and tech locker rooms. Enviroshop12USA has a traction surface suitable for interior, wet plus applications, with good drainage. Floors walked on when wet should be level, clean, maintained and free of standing water or other contaminants. Should be cleaned with frequent maintenance to keep clean.

Declared Product Use & DCOF Requirement

Meets and exceeds .50 DCOF (wet) rating, appropriate for this environment of use:

ANSI A326.3 4.1.3 Interior Wet Plus (IW+).



Series: DriveSeries12USA

Color: Alloy Grey

Finish: Traction.3L.Brightfinish

Size: 12" x 12"

Surface Traction Conforms to:

ANSI A326.3

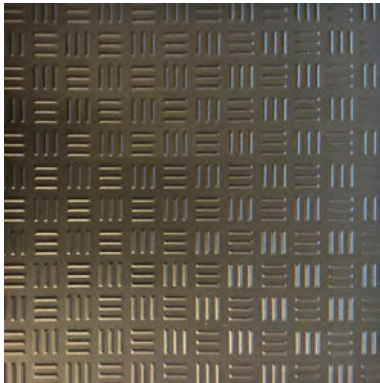
4.1.3 Interior Wet Plus (IW+).

4.1.4 Exterior Wet (EW)

4.1.5 Oils & Grease (O/G)

F-8 | FT-30, 31, 32, 33

DriveSeries12USA
advanced surface technology



Series: DriveSeries12USA

Color: Carbon Black

Finish: Traction.3L.Brightfinish

Size: 12" x 12"

Surface Traction Conforms to:

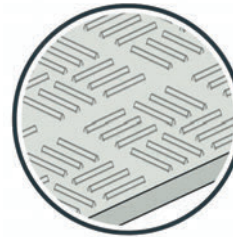
ANSI A326.3

4.1.3 Interior Wet Plus (IW+).

4.1.4 Exterior Wet (EW)

4.1.5 Oils & Grease (O/G)

DCOF: > .55 Wet



DriveSeries12USA includes three lines of elevated traction which supports your automotive dealership environment a better surface to manage STF (slip, trip, and fall) risk. DriveSeries12USA includes BrightFinish which is a permanent sealant which coats and covers the tile

surface to retard permanent stains. BrightFinish helps dealers with the recommended cleaning efforts so your facility can be maintained in a "like new" condition.

With DriveSeries12USA you get STF (slip, trip, and fall) risk management support and a floor that can be cleaned and maintained in a "like new" appearance.

A permanent enhanced porcelain technology floor system. See declared uses below. Should be cleaned with frequent maintenance to keep clean and free of contamination and debris when dealership is operating. Spot spills should be removed immediately and not left on surface. Floor cleaning should include use of de-greasing chemical, floor scrubber sweeper machine with wet vacuum to suck-up dirty water and debris as part of cleaning process.

Advantages

1. Advanced surface technology to better manage STF (slip, trip & fall) risk.
2. Surface has repeating lines elevated above the bed of the tile. Designed for greater foot, shoe-sole traction.
3. Will not permanently stain or darken when properly cleaned.

AutoStoneUSA Manufactured Declared Use

Evaluate for use in automotive workshop and service drive environments.

4.1.3 Interior, Wet Plus (IW+) - evaluate for interior use in automotive workshop and service drive environments with high speed doors and tech locker rooms.

4.1.4 Exterior, Wet (EW) - level outdoor spaces walkways, sidewalks, where such floors may be walked upon when wet (excluding ice or snow) if level, clean, maintained and free of standing water or other contaminants.

4.1.5 Oils/Greases (O/G) - level areas regularly exposed to automotive fluids, etc., so long as such floors are level, regularly cleaned, maintained and free of standing water and contaminant build-up.

Declared Product Use & DCOF Requirement

Meets and exceeds .55 DCOF (wet) rating, appropriate for this environment of use:

ANSI A326.3 4.1.3 Interior Wet Plus (IW+).

ANSI A326.3 4.1.4 Exterior Wet (EW).

ANSI A326.3 4.1.5 Oils/Grease (O/G).

F-8 - FT-30, 31, 32, 33

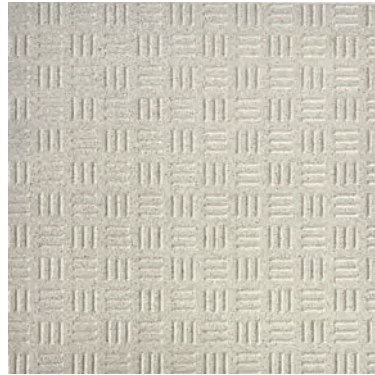
EnviroShop12usa smarter, better workshops



Series: EnviroShop12USA
Color: Alloy Grey
Finish: Traction.Brightfinish
Size: 12" x 12"
Surface Traction Conforms to:
ANSI A326.3
4.1.3 Interior Wet Plus (IW+).
DCOF: > .50 Wet



DriveSeries12USA advanced surface technology



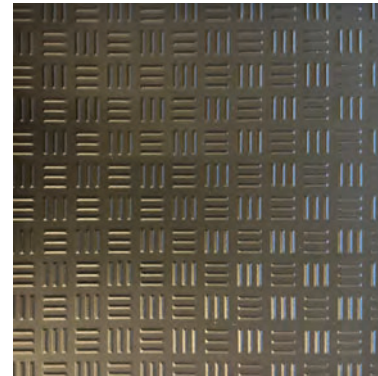
Series: DriveSeries12USA
Color: Alloy Grey
Finish: Traction.3L.Brightfinish
Size: 12" x 12"
Surface Traction Conforms to:
ANSI A326.3
4.1.3 Interior Wet Plus (IW+).
4.1.4 Exterior Wet (EW)
4.1.5 Oils & Grease (O/G)
DCOF: > .55 Wet



Series: EnviroShop12USA
Color: Smoke Grey
Finish: Traction.Brightfinish
Size: 12" x 12"
Surface Traction Conforms to:
ANSI A326.3
4.1.3 Interior Wet Plus (IW+).
DCOF: > .50 Wet



Series: EnviroShop12USA
Color: Carbon Black
Finish: Traction.Brightfinish
Size: 12" x 12"
Surface Traction Conforms to:
ANSI A326.3
4.1.3 Interior Wet Plus (IW+).
DCOF: > .50 Wet



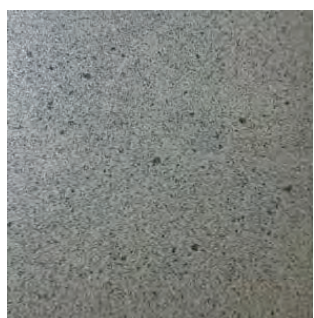
Series: DriveSeries12USA
Color: Carbon Black
Finish: Traction.3L.Brightfinish
Size: 12" x 12"
Surface Traction Conforms to:
ANSI A326.3
4.1.3 Interior Wet Plus (IW+).
4.1.4 Exterior Wet (EW)
4.1.5 Oils & Grease (O/G)
DCOF: > .55 Wet



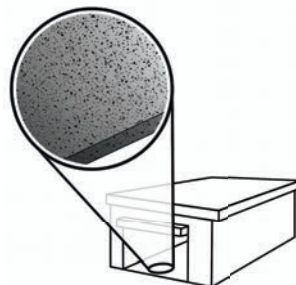


Series: eShop08USA
Color: Alloy Grey
Finish: Super.Grip.Brightfinish
Size: 8" x 8"
Surface Traction Conforms to:
 ANSI A326.3 Use Category:
 4.1.3 Interior Wet Plus (IW+).
 4.1.4 Exterior Wet (EW).
 4.1.5 Oils/Grease (O/G).

F-8 | FT-30, 31, 32, 33



Series: eShop08USA
Color: Smoke Grey
Finish: Super.Grip.Brightfinish
Size: 8" x 8"
Surface Traction Conforms to:
 ANSI A326.3 Use Category:
 4.1.3 Interior Wet Plus (IW+).
 4.1.4 Exterior Wet (EW).
 4.1.5 Oils/Grease (O/G).



EShop08USA is a flat surface structure with **Super.Grip** nano- textured granules, which are added to the tile surface to provide added surface texture to help you manage your STF (slip, trip, and fall) risk. It also has our proprietary BrightFinish permanent sealant which coats and covers the tile surface to retard permanent stains.



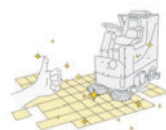
Series: eShop08USA
Color: Genesis-Carbon Black
Finish: Super.Grip.Brightfinish
Size: 8" x 8"
Surface Traction Conforms to:
 ANSI A326.3 Use Category:
 4.1.3 Interior Wet Plus (IW+).
 4.1.4 Exterior Wet (EW).
 4.1.5 Oils/Grease (O/G).



Super.Grip provides you extra surface traction and BrightFinish helps dealers with the recommended cleaning efforts so your facility can be maintained in a "like new" condition.



With eShop08USA you get STF (slip, trip, and fall) risk management support and a floor that can be cleaned and maintained in a "like new" appearance.



Advantages

1. Advanced surface technology to better manage STF (slip, trip & fall) risk.
2. Surface has flat textured surface with enhanced surface traction. Designed for greater foot, shoe-sole traction.
3. Includes Super.Grip. Advanced technology with "nano-textured" particles which increase surface traction.
4. Includes brightfinish. It will not permanently stain or darken when properly cleaned.

AutoStoneUSA Manufactured Declared Use

Evaluate for use in automotive workshop and service drive environments.

4.1.3 Interior, Wet Plus (IW+) - evaluate for interior use in automotive workshop and service drive environments with high speed doors and tech locker rooms.

4.1.4 Exterior, Wet (EW) - level outdoor spaces walkways, sidewalks, where such floors may be walked upon when wet (excluding ice or snow) if level, clean, maintained and free of standing water or other contaminants.

4.1.5 Oils/Greases (O/G) - level areas regularly exposed to automotive fluids, etc., so long as such floors are level, regularly cleaned, maintained and free of standing water and contaminant build-up.

Declared Product Use & DCOF Requirements

Meets and exceeds .50 or .55 DCOF rating, appropriate for this environment of use:

ANSI A326.3 4.1.3 Interior Wet Plus (IW+). => .50 DCOF Wet.

ANSI A326.3 4.1.4 Exterior Wet (EW). => .55 DCOF Wet.

ANSI A326.3 4.1.5 Oils/Grease (O/G). => .55 DCOF Wet.

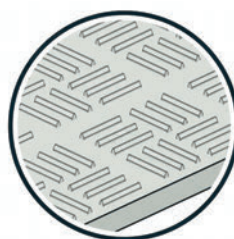


Series: DriveSeries08USA
Color: Alloy Grey
Finish: Super.Grip3L.Brightfinish
Size: 8" x 8"
Surface Traction Conforms to:
 ANSI A326.3 Use Category:
 4.1.3 Interior Wet Plus (IW+).
 4.1.4 Exterior Wet (EW).
 4.1.5 Oils/Grease (O/G).

F-8 | FT-30, 31, 32, 33



Series: DriveSeries08USA
Color: Smoke Grey
Finish: Super.Grip3L.Brightfinish
Size: 8" x 8"
Surface Traction Conforms to:
 ANSI A326.3 Use Category:
 4.1.3 Interior Wet Plus (IW+).
 4.1.4 Exterior Wet (EW).
 4.1.5 Oils/Grease (O/G).



DriveSeries08USA includes three lines of elevated traction which supports your automotive dealership environment a better surface to manage STF (slip, trip, and fall) risk. DriveSeries08USA includes both **Super.Grip** which are added nano-granules of texture for added surface grip. **BrightFinish** is a permanent sealant which coats and covers the tile surface to retard permanent stains.



BrightFinish helps dealers with the recommended cleaning efforts so your facility can be maintained in a "like new" condition.



Series: DriveSeries08USA
Color: Genesis-Carbon Black
Finish: Super.Grip3L.Brightfinish
Size: 8" x 8"
Surface Traction Conforms to:
 ANSI A326.3 Use Category:
 4.1.3 Interior Wet Plus (IW+).
 4.1.4 Exterior Wet (EW).
 4.1.5 Oils/Grease (O/G).



With DriveSeries08USA you get STF (slip, trip, and fall) risk management support and a floor that can be cleaned and maintained in a "like new" appearance.

Advantages

1. Advanced surface technology to better manage STF (slip, trip & fall) risk.
2. Surface has repeating lines elevated above the bed of the tile. Designed for greater foot, shoe-sole traction.
3. Includes Super.Grip. Advanced technology with "nano-textured" particles which increase surface traction.
4. Includes brightfinish. It will not permanently stain or darken when properly cleaned.

AutoStoneUSA Manufactured Declared Use

Evaluate for use in automotive workshop and service drive environments.

4.1.3 Interior, Wet Plus (IW+) - evaluate for interior use in automotive workshop and service drive environments with high speed doors and tech locker rooms.

4.1.4 Exterior, Wet (EW) - level outdoor spaces walkways, sidewalks, where such floors may be walked upon when wet (excluding ice or snow) if level, clean, maintained and free of standing water or other contaminants.

4.1.5 Oils/Greases (O/G) - level areas regularly exposed to automotive fluids, etc., so long as such floors are level, regularly cleaned, maintained and free of standing water and contaminant build-up.

Declared Product Use & DCOF Requirements

Meets and exceeds .50 or .55 DCOF rating, appropriate for this environment of use:

ANSI A326.3 4.1.3 Interior Wet Plus (IW+). => .50 DCOF Wet.

ANSI A326.3 4.1.4 Exterior Wet (EW). => .55 DCOF Wet.

ANSI A326.3 4.1.5 Oils/Grease (O/G). => .55 DCOF Wet.

F-8 - FT-30, 31, 32, 33



Series: eShop08USA
Color: Alloy Grey
Finish: Super.Grip.Brightfinish
Size: 8" x 8"
Surface Traction Conforms to:
 ANSI A326.3 Use Category:
 4.1.3 Interior Wet Plus (IW+).
 4.1.4 Exterior Wet (EW).
 4.1.5 Oils/Grease (O/G).



Series: DriveSeries08USA
Color: Alloy Grey
Finish: Super.Grip3L.Brightfinish
Size: 8" x 8"
Surface Traction Conforms to:
 ANSI A326.3 Use Category:
 4.1.3 Interior Wet Plus (IW+).
 4.1.4 Exterior Wet (EW).
 4.1.5 Oils/Grease (O/G).



Series: eShop08USA
Color: Smoke Grey
Finish: Super.Grip.Brightfinish
Size: 8" x 8"
Surface Traction Conforms to:
 ANSI A326.3 Use category:
 4.1.3 Interior Wet Plus (IW+).
 4.1.4 Exterior Wet (EW).
 4.1.5 Oils/Grease (O/G).



Series: DriveSeries08USA
Color: Smoke Grey
Finish: Super.Grip3L.Brightfinish
Size: 8" x 8"
Surface Traction Conforms to:
 ANSI A326.3 Use Category:
 4.1.3 Interior Wet Plus (IW+).
 4.1.4 Exterior Wet (EW).
 4.1.5 Oils/Grease (O/G).



Series: eShop08USA
Color: Genesis-Carbon Black
Finish: Super.Grip.Brightfinish
Size: 8" x 8"
Surface Traction Conforms to:
 ANSI A326.3 Use Category:
 4.1.3 Interior Wet Plus (IW+).
 4.1.4 Exterior Wet (EW).
 4.1.5 Oils/Grease (O/G).



Series: DriveSeries08USA
Color: Genesis-Carbon Black
Finish: Super.Grip3L.Brightfinish
Size: 8" x 8"
Surface Traction Conforms to:
 ANSI A326.3 Use Category:
 4.1.3 Interior Wet Plus (IW+).
 4.1.4 Exterior Wet (EW).
 4.1.5 Oils/Grease (O/G).

ClinkerShopUSA

Better technology, better performance, American made.

F-8 | FT-30, 31, 32, 33

Service Drive and Workshops



Series: ClinkerShopUSA

Color: Alloy Grey

Finish: Super.Grip.Brightfinish

Size: 4" x 8" x 1/2"

Surface Traction Conforms to:

ANSI A326.3 Use Category: 4.1.3

Interior Wet Plus (IW+). 4.1.4

Exterior Wet (EW).

4.1.5 Oils/Grease (O/G).



Series: ClinkerShopUSA

Color: Genesis-Carbon Black

Finish: Super.Grip.Brightfinish

Size: 4" x 8" x 1/2"

Surface Traction Conforms to:

ANSI A326.3 Use Category: 4.1.3

Interior Wet Plus (IW+). 4.1.4

Exterior Wet (EW).

4.1.5 Oils/Grease (O/G).



Advantages

1. Advanced surface technology to better manage STF (slip, trip & fall) risk.
2. Surface has repeating lines elevated above the bed of the tile. Designed for greater foot, shoe-sole traction.
3. Will not permanently stain or darken when properly cleaned.

Manufactured Declared Uses

Evaluate for use in automotive workshop and service drive environments

4.1.4 (Exterior, Wet) - level outdoor spaces walkways, sidewalks, where such floors may be walked upon when wet (excluding ice or snow) if level, clean, maintained and free of standing water or other contaminants.

4.1.5 (Oils/Greases) - level areas regularly exposed to automotive fluids, etc., so long as such floors are level, regularly cleaned, maintained and free of standing water and contaminant build-up. Consult with your architect to determine dealership practices. **Review ANSI A326.3 2021 standard.**

Declared Product Use & DCOF Requirement

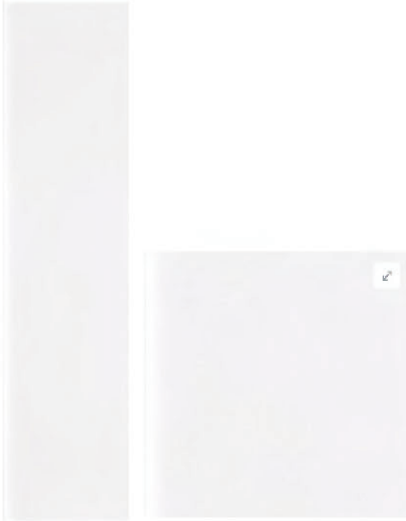
Meets and exceeds 55 DCOF rating as required for ANSI A326.3 4.1.3 Exterior Wet.

Customer Lounge & Customer Restrooms

WT-1 & WT-3

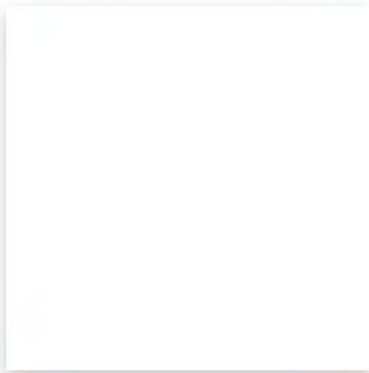


MADE IN USA



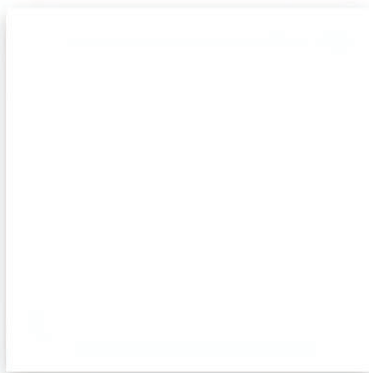
WT-1 Bathroom Wall Tile

Series: KRE-A-tive
Color: Artic White
Finish: Glossy or Matte
Size: 04" x 16"



WT-1 Bathroom & Tech Wall Tile

Series: Premier | Subway
Color: Bright White Ice
Finish: Glossy
Size: 3" x 6"



WT-3 Bathroom Wall Tile

Series: Premier
Color: Just White
Finish: Matte
Size: 12" x 24"

Customer Restroom Wall Tiles Areas



WT-2



MADE IN USA



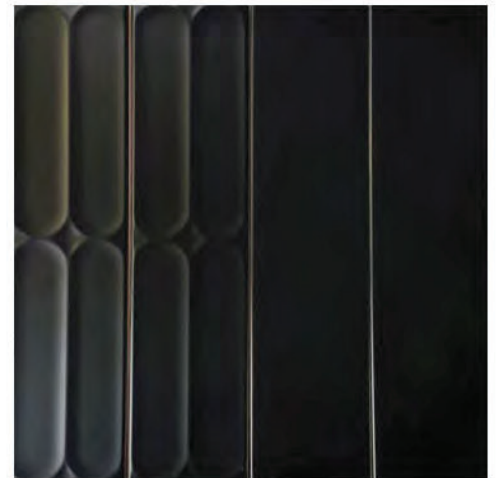
Series: Station America - A
Color: Black
Finish: Matte Bold
Size: 4" x 16"
Note: Install either horizontal or vertical stack.



Series: Station America - A
Color: Black
Finish: Glossy Bold
Size: 4" x 16"
Note: Install either horizontal or vertical stack.



Series: Station America - B
Color: Black
Finish: Matte Bold
Size: 4" x 16"
Note: Install either horizontal or vertical stack.

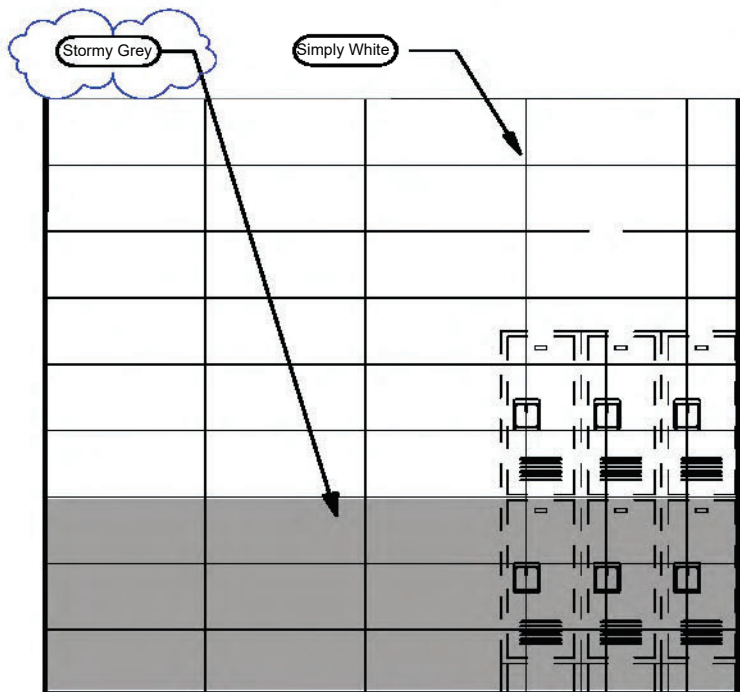


Series: Station America - B
Color: Black
Finish: Glossy Bold
Size: 4" x 16"
Note: Install either horizontal or vertical stack.



ShopWalls!

12" x 24" Series

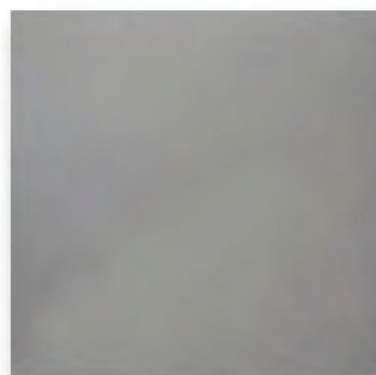


Tech Restroom Walls

Color: Simply White

Finish: Satin

Size: 12" x 24" (nominal)



Tech Restroom Walls

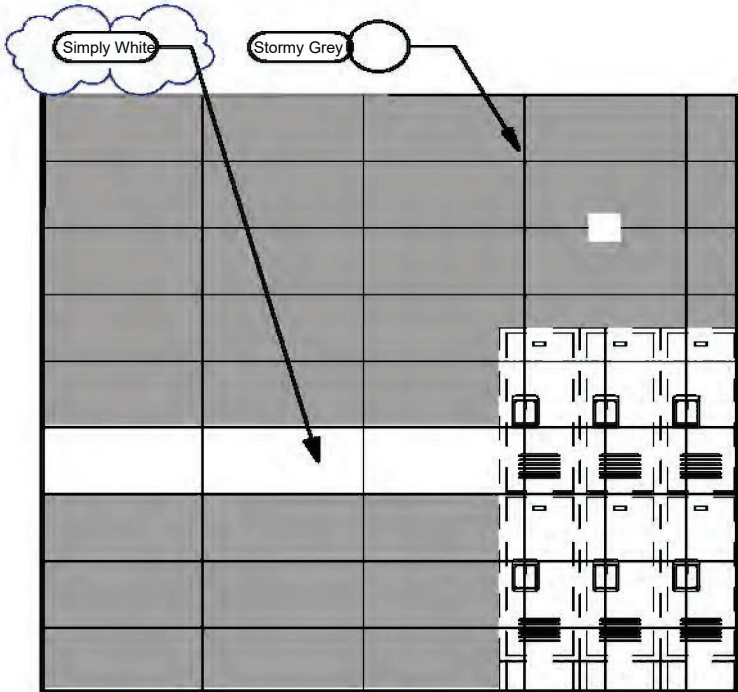
Color: Stormy Grey

Finish: Glossy

Size: 12" x 24" (nominal)

ShopWalls!

12" x 24" Series Modern Lines

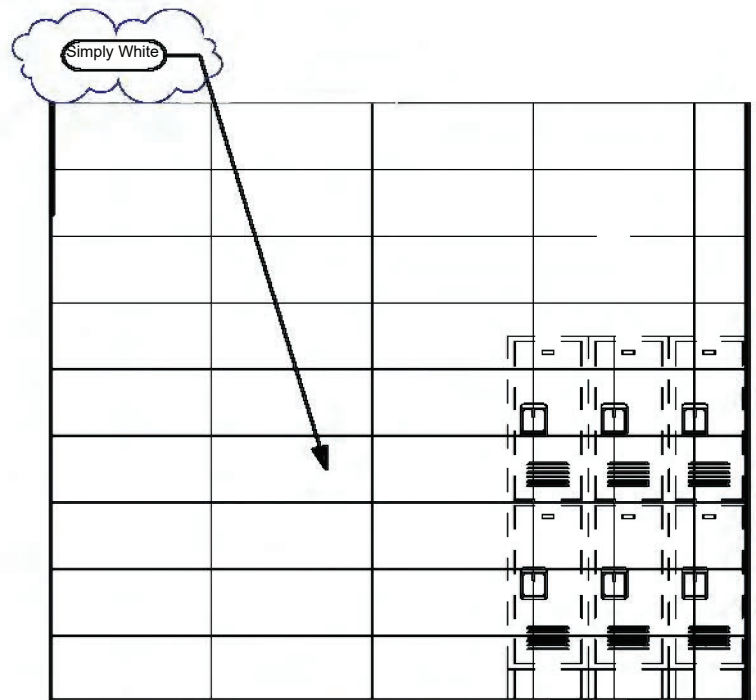
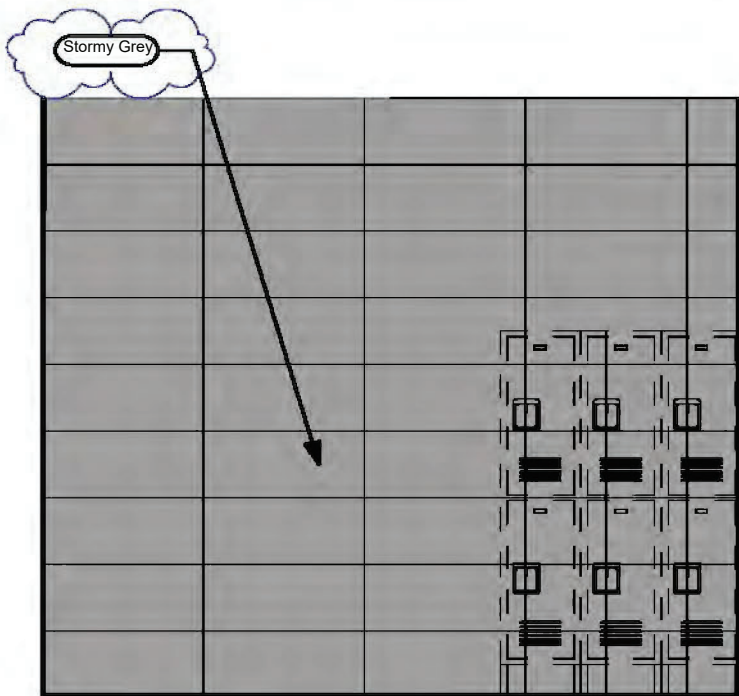


Restroom & Tech Walls

ShopWalls! have rectified edges for precise tile alignment and tight grout joints.

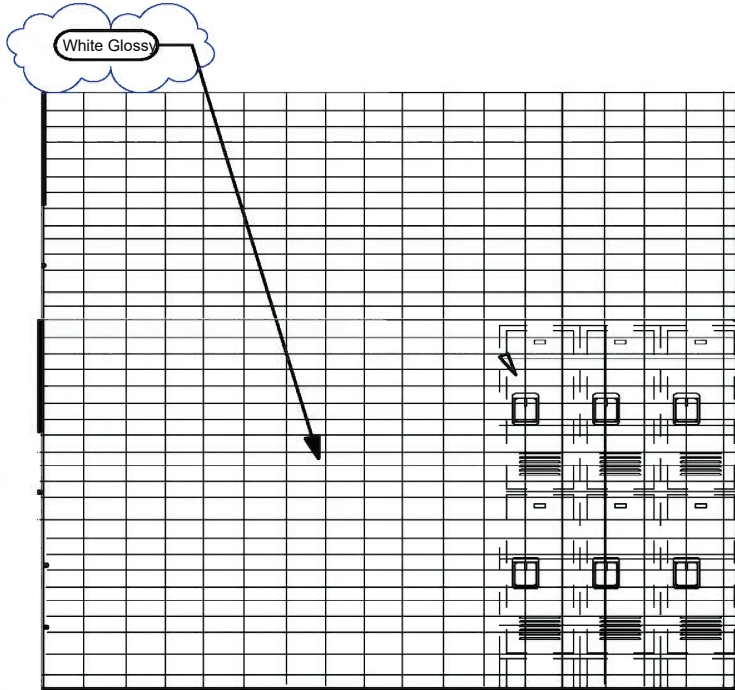
Both colors are the exact size and are designed as a system to support your wet wall, locker room wall environment needs.

Affordable, available and the right choice for your automotive project.



ShopWalls!

03" x 06" Subway Series



Restroom & Tech Walls

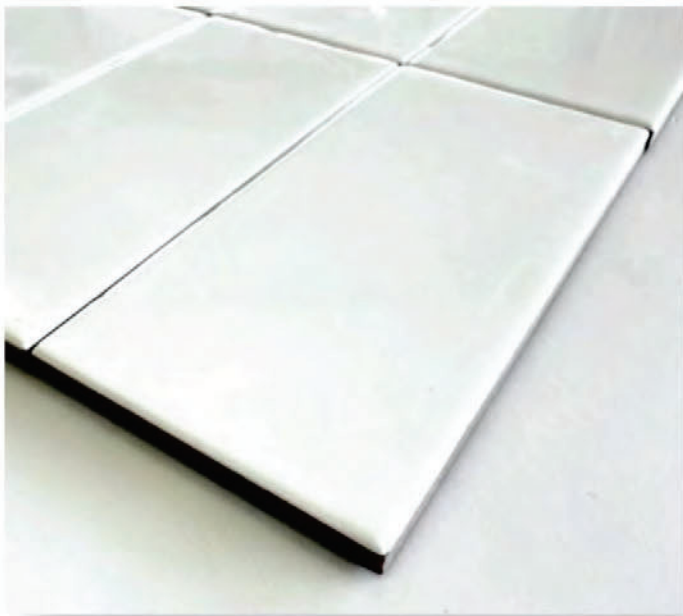
ShopWalls! provides automotive retail & service environments an affordable and attractive wall tile material designed for these specific environments.

This subway series format (03" x 06") tile creates an attractive environment for your service techs. Soft profile edge enhances the design profile of this series.

Pricing is affordable and these materials can ship with other AutoStone materials to reduce freight costs, fossil fuel use and reduces carbon footprint through consolidated supply and shipping.

Affordable, available, and designed for your tech walls! All materials ship together to reduce repetitive fossil fuel use.

No supply chain challenges or delivery delays.



Subway Tile for Restroom & Tech Walls

Color: White
Finish: Glossy
Size: 03" x 06" (nominal)



Service & Tech Restroom Areas Wall Tile

Series: ShopWall!
Color: Granita Grey
Finish: Satin
Size: 8" X 8" U.S. Nominal Dimensions .



Service & Tech Restroom Areas Wall Tile

Series: ShopWall!
Color: Anthracite Grey
Finish: Satin
Size: 8" X 8" U.S. Nominal Dimensions .

INDUSTRIAL ENVIRONMENT LVT LARGE (18" x 36") FORMAT FLOOR & WALL PANELS

RA3

Great for Parts, Storage Areas, Janitorial, Lunch & Break Rooms, Tech Locker Room Floors & Walls.

Wainscoting for Hallways, WorkShop Areas & All Back-Office Areas.

18" x 36" large format panels with rugged diamond plated surface texture to help reduce STF (slip, trip, and fall) risk.



Grey Concrete



Deep Concrete



SURFACE CAMOUFLAGE

Face Camouflage enhances the beauty of your floor by reducing the negative visual daily contaminants generated during your workday.



SCRATCH RESISTANT SURFACE

Will not dent, scratch, or chip like metal, concrete, epoxy, tile, or other finishes.



CHEMICAL RESISTANT SURFACE

Resistant to water, gasoline, MEK, acetone, motor oil, isopropanol, acetic acid, ammonia, sodium chloride solution, and other chemicals.*



IMPACT GUARD SURFACE

Strong, rugged, and stands up to blunt force impact better than any other surface.



RA IS RECOMMENDED FOR CLIMATE CONTROLLED ENVIRONMENTS WITH A ROOF, WALL AND DOORS FLOOD SAFE, WATER RESISTANT, + SOUND REDUCTION



CLIMATE-CONTROLLED ENVIRONMENTS

For environments with a temperature room range of 40- and 104-degrees.*



FLOOD SAFE & WATER RESISTANT

Panels are moisture-resistant and can be submerged for days and remain bonded.



LESS NOISE BETTER CONDITIONS

Reduces noise decibels (dB) and improves working conditions.

So easy to install that there is no need for expensive, highly skilled labor.

So fast that you can use immediately upon installation; no cure time required.

Panels are installed edge-to-edge, and wall-to-wall for a seamless, beautiful floor.

Commercial workshops install in 1-2 days (depending on size).



RA3

RA3 PANEL PRICE

Troweled Adhesive Method*

*Troweled adhesive will be added to your quote.

Thickness: 3mm

Size: 18" x 36" Panel (4.5 SQFT Per Panel)

Features Included:

- Rated for climate-controlled environments (home garage)
- Surface Camouflage
- Scratch Resistant Surface
- Chemical Resistant Surface
- Impact Guard Surface
- Industrial Strength 30 mil Wear-Layer

AutoStoneUSA Mercedes Team



Mercedes-Benz



Made In USA

General and immediate online help. You can find most information including requesting pricing on our Mercedes-Benz website:

Mercedes-Benz Sales Team

Email request for quotes, samples, & all MBUSA related to:

mercedes@autostoneusa.com



AutoStoneUSA website for Mercedes-Benz Approved

Materials:

<https://autostoneusa.com/mercedes/>



AutoStoneUSA phone for support & assistance:

214-393-4875



Madison Wilson
Executive Sales Support &
Project Coordinator
214-393-4868 direct dial
madison@autostoneusa.com

**autostone
usa**



Barry Wells
President, Owner, Founder
214-393-4862 direct dial
214-830-1206 mobile
barry@autostoneusa.com

**autostone
usa**

