

autostone usa



Mercedes-Benz Tile Guide

2025.05 Edition



Made in USA

Mercedes-Benz Certified Evolution Image Program

(formerly Autohaus3)

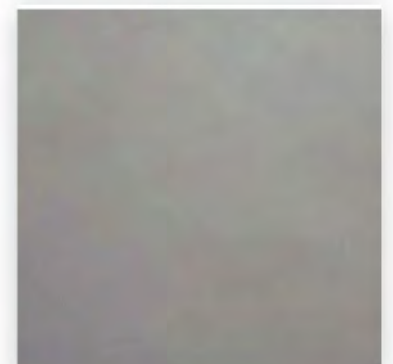
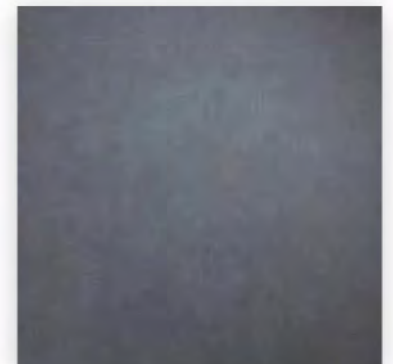
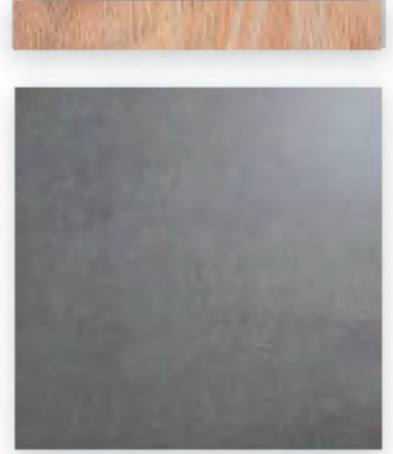
AutoStoneUSA.com/Mercedes-Benz

Click image below for video introduction on materials



AutoStoneUSA.com

© 2025 AutoStone Floor Systems, All Rights Reserved.





Q2KD

QUARRY TO KILN DISTRIBUTION MODEL

1**LOCALLY SOURCED & LOCALLY QUARRIED**

- ✓ Elimination of trans-ocean shipping
- ✓ US jobs, shorter supply chain

2**DOMESTICALLY PRODUCED & LOCALLY WAREHOUSED**

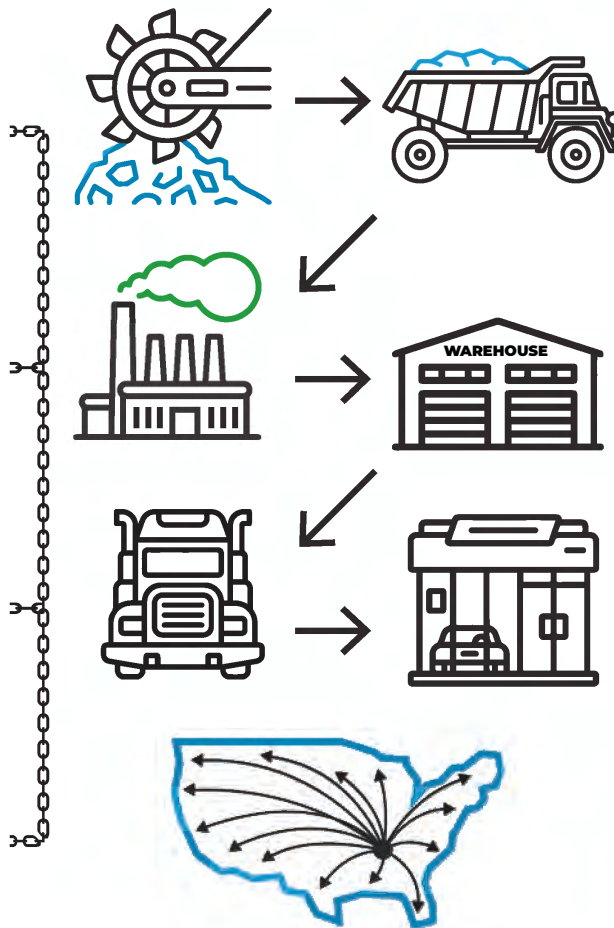
- ✓ Less shipping
- ✓ Reduced carbon footprint

3**CONSOLIDATED SHIPPING DIRECT TO YOUR DEALERSHIP**

- ✓ Eliminates distribution shipping
- ✓ Reduces use of fossil fuel

4**DOMESTICALLY PRODUCED SMARTER & EFFICIENT DISTRIBUTION**

- ✓ Better for the environment
- ✓ Saves you money



Made in the



Showroom Vehicle Display & Customer Areas



Option (1)



MADE IN USA



Black Asphalt

Below: actual color varies, example is only representative



Series: AutohausUSA

Color: Black Asphalt

Finish: Textured Asphalt

Size: 24" x 24" (nominal)

Edge: Rectified profile (exact dimension)

Product Code: AS.MB.AH.2424.BLKASP.TXA

Grout: Laticrete Permacolor Select 22 Midnight Black

Thinset: LHT Plus



Deep Grey Asphalt

Below: actual color varies, example is only representative



Series: AutohausUSA

Color: Deep Grey Asphalt

Finish: Textured Asphalt

Size: 24" x 24" (nominal)

Edge: Rectified profile (exact dimension)

Product Code: AS.MB.AH.2424.DGASP.TXA

Grout: Laticrete Permacolor Select 60 Dusty Grey

Thinset: LHT Plus



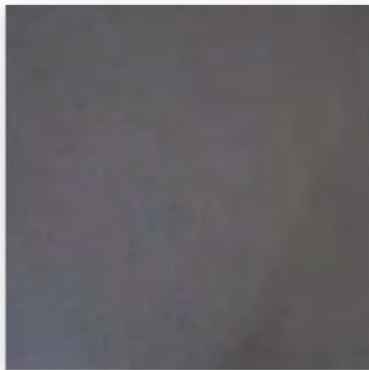
Showroom Vehicle Display & Customer Areas



Option (2)



MADE IN USA



Nero

Series: AutobahnUSA

Color: Nero

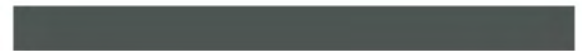
Finish: Natural | Textured

Size: 24" x 24" (nominal)

Edge: Rectified profile (exact dimension)

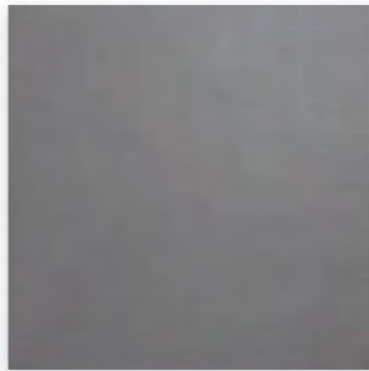
Product Code: AS.MB.USA.2424.NERO.NAT

Below: actual color varies, example is only representative



Grout: Laticrete Permacolor Select 22 Midnight Black

Thinset: LHT Plus



City

Series: AutobahnUSA

Color: City

Finish: Natural | Textured

Size: 24" x 24" (nominal)

Edge: Rectified profile (exact dimension)

Product Code: AS.MB.USA.2424.CI.NAT

Below: actual color varies, example is only representative



Grout: Laticrete Permacolor Select 45 Raven

Thinset: LHT Plus



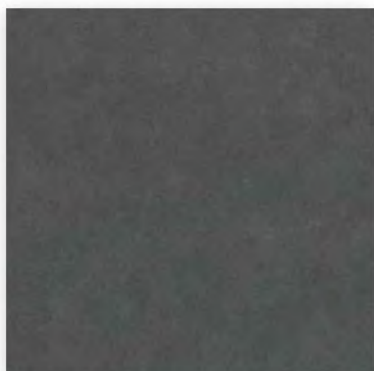
Showroom Vehicle Display & Customer Areas



Option (3)



MADE IN USA



Stuttgart Black

Series: LombardUSA
Color: Stuttgart Black
Finish: Matte | Natural
Size: 12" x 24" | 24" x 24" (nominal)
Edge: Rectified profile (exact dimension)

Product Code:

AS.LUSA.1224.STBlack.Matte

AS.LUSA.2424.STBlack.Matte

Below: actual color varies, example is only representative



Grout: Laticrete Permacolor Select 22 Midnight Black

Thinset: LHT Plus



Deutsche Graphit

Series: LombardUSA
Color: Deutsche Grahit
Finish: Matte | Natural
Size: 12" x 24" | 24" x 24" (nominal)
Edge: Rectified profile (exact dimension)

Product Code:

AS.LUSA.1224.DeutGraph.Matte

AS.LUSA.2424.DeutGraph.Matte

Below: actual color varies, example is only representative



Grout: Laticrete Permacolor Select 45 Raven

Thinset: LHT Plus

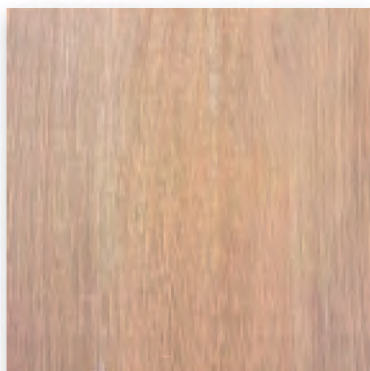


Customer Lounge & Customer Restrooms



FT-23

Woodplank Tile

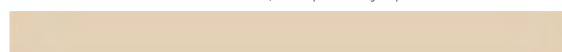


Maple Harvest

Series: WoodPlankUSA
Color: Maple Harvest
Finish: Natural | Texture
Size: 8" x 48" (nominal)

PORCELAIN WoodPlank

Below: actual color varies, example is only representative



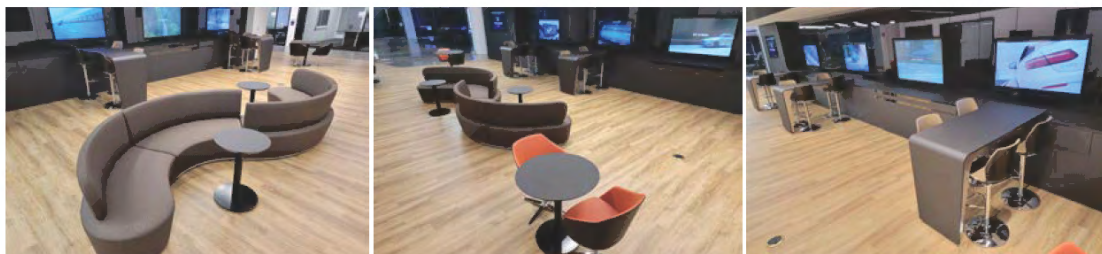
Grout: Laticrete Permacolor Select 81 Buttercream
Thinset: LHT Plus



Maple Beech

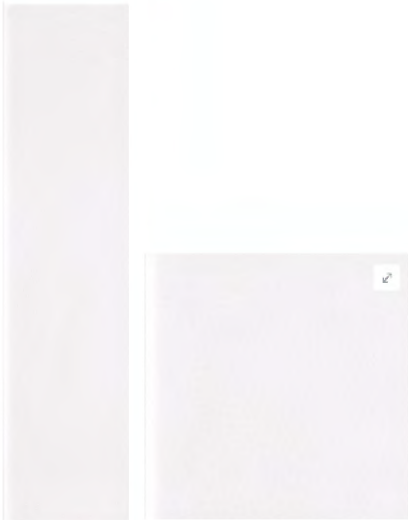
Series: LV Woodplank
Color: Maple Beech
Finish: Textured Wood Grain
Size: 7" x 48" (nominal)
Product Code: AS.MB.AH3.0748.GMP004-1.Resp

LV WoodPlank Automotive Retail Collection



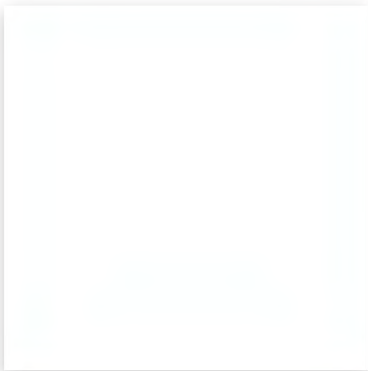
Customer Lounge & Customer Restrooms

WT-1 & WT-3



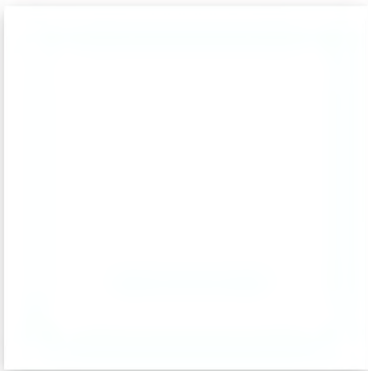
WT-1 Bathroom Wall Tile

Series: KRE-A-tive
Color: Artic White
Finish: Glossy or Matte
Size: 04" x 16"



WT-1 Bathroom & Tech Wall Tile

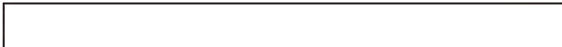
Series: Premier | Subway
Color: Bright White Ice
Finish: Glossy
Size: 3" x 6"



WT-3 Bathroom Wall Tile

Series: Premier
Color: Just White
Finish: Matte
Size: 12" x 24"

Below: actual color varies, example is only representative



Grout: Laticrete Permacolor Select 44 Bright White
Thinset: LHT Plus



Customer Restroom Wall Tiles Areas

WT-2



MADE IN USA



Series: Station America - A
Color: Black
Finish: Matte Bold
Size: 4" x 16"
Note: Install either horizontal or vertical stack.



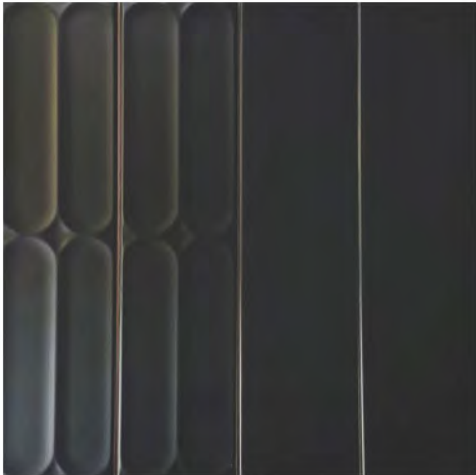
Series: Station America - A
Color: Black
Finish: Glossy Bold
Size: 4" x 16"
Note: Install either horizontal or vertical stack.



Series: Station America - B
Color: Black
Finish: Matte Bold
Size: 4" x 16"
Note: Install either horizontal or vertical stack.

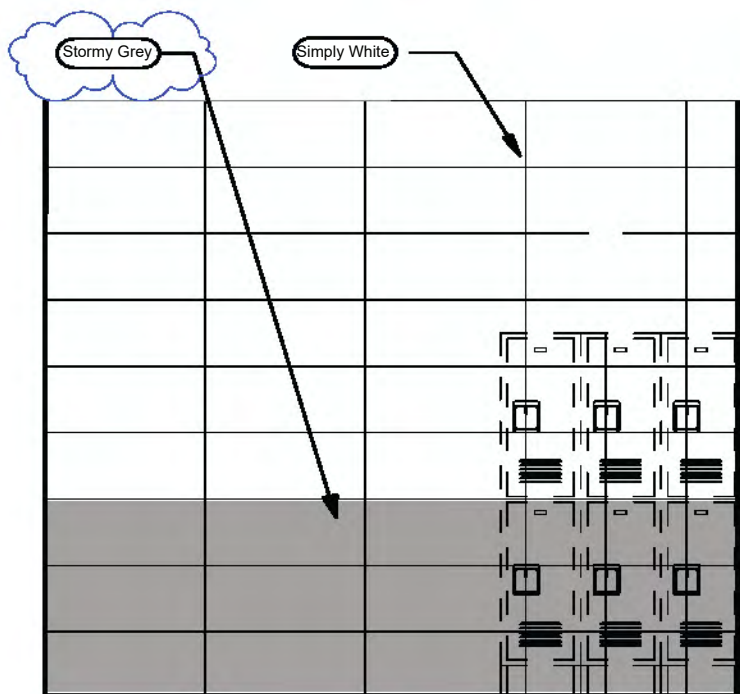


Series: Station America - B
Color: Black
Finish: Glossy Bold
Size: 4" x 16"
Note: Install either horizontal or vertical stack.



ShopWalls!

12" x 24" Series



Tech Locker Room Walls

Tech locker rooms are non-customer contact areas and brand programs allow dealers and their architects discretion over your material selection.

ShopWalls! provides dealers an affordable and attractive wall tile material designed for these specific environments.

This larger format (12" x 24") tile minimizes grout lines while creating a modern and attractive environment for your service techs. Rectified edges for precise & tight grout joint alignment.

Benefits includes wall surfaces that are easy to clean so they are maintained in a "like-new" appearance.

Pricing is affordable and these materials can ship with other AutoStone materials to reduce freight costs.

Affordable, available, and designed for your tech walls! All materials ship together to reduce repetitive fossil fuel use.

No supply chain challenges or delivery delays.

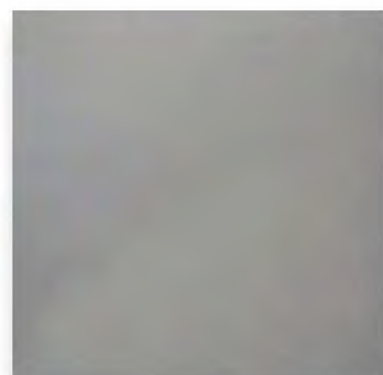


Tech Restroom Walls

Color: Simply White

Finish: Satin

Size: 12" x 24" (nominal)



Tech Restroom Walls

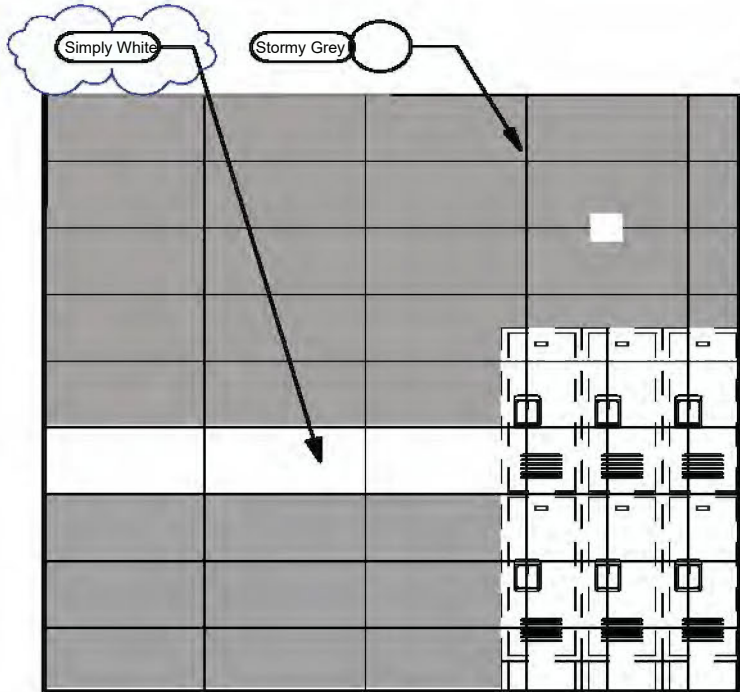
Color: Stormy Grey

Finish: Glossy

Size: 12" x 24" (nominal)

ShopWalls!

12" x 24" Series Modern Lines

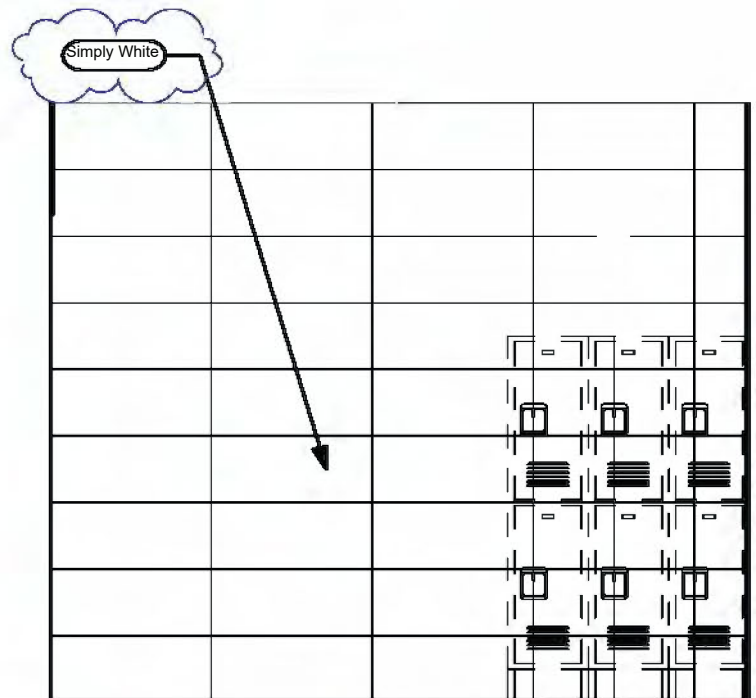
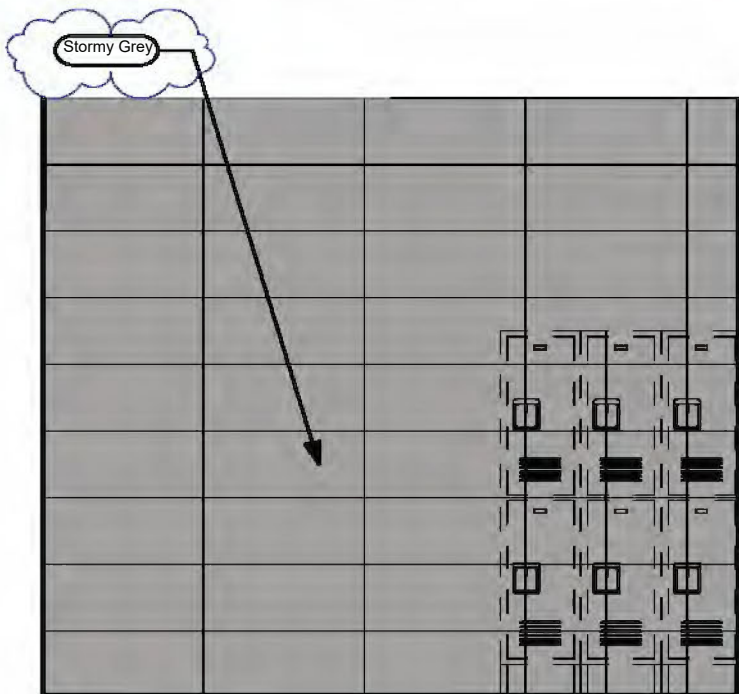


Restroom & Tech Walls

ShopWalls! have rectified edges for precise tile alignment and tight grout joints.

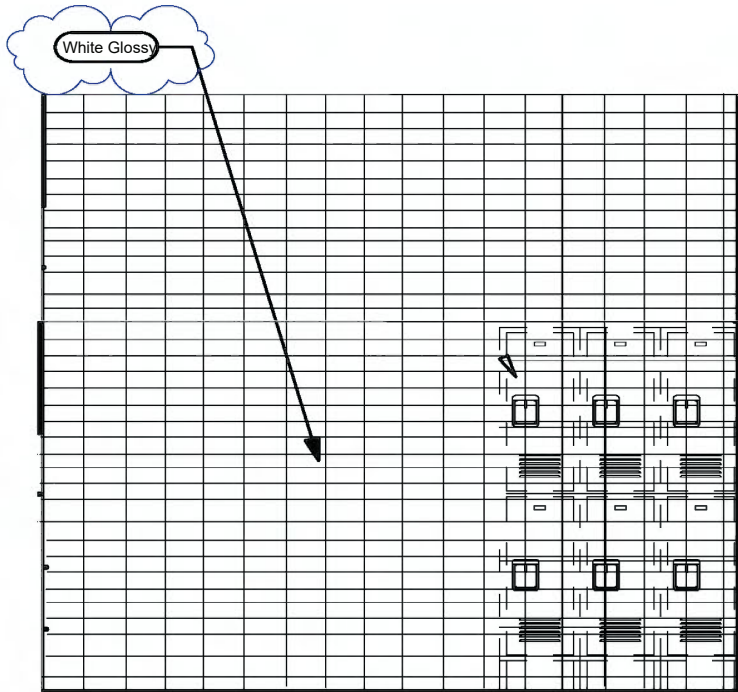
Both colors are the exact size and are designed as a system to support your wet wall, locker room wall environment needs.

Affordable, available and the right choice for your automotive project.



ShopWalls!

03" x 06" Subway Series



Restroom & Tech Walls

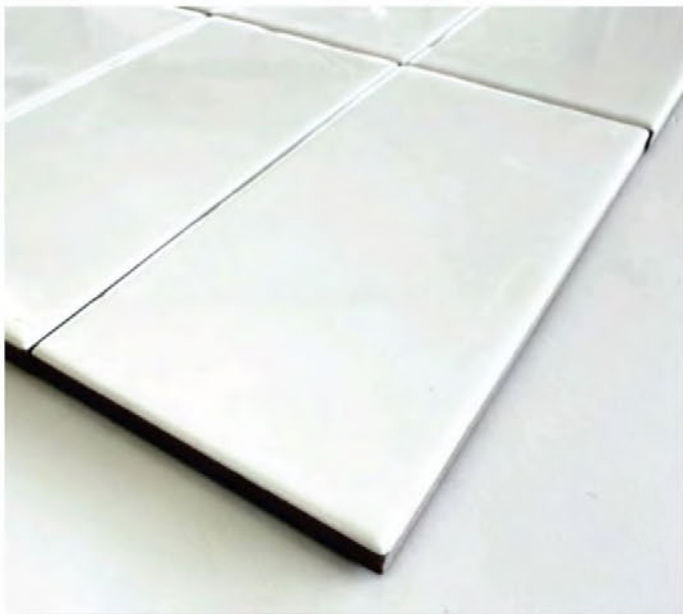
ShopWalls! provides automotive retail & service environments an affordable and attractive wall tile material designed for these specific environments.

This subway series format (03" x 06") tile creates an attractive environment for your service techs. Soft profile edge enhances the design profile of this series.

Pricing is affordable and these materials can ship with other AutoStone materials to reduce freight costs, fossil fuel use and reduces carbon footprint through consolidated supply and shipping.

Affordable, available, and designed for your tech walls! All materials ship together to reduce repetitive fossil fuel use.

No supply chain challenges or delivery delays.



Subway Tile for Restroom & Tech Walls

Color: White
Finish: Glossy
Size: 03" x 06" (nominal)



Service & Tech Restroom Areas Wall Tile

Series: ShopWall!
Color: Granita Grey
Finish: Satin
Size: 8" X 8" U.S. Nominal Dimensions .



Service & Tech Restroom Areas Wall Tile

Series: ShopWall!
Color: Anthracite Grey
Finish: Satin
Size: 8" X 8" U.S. Nominal Dimensions .

INDUSTRIAL ENVIRONMENT LVT LARGE (18" x 36") FORMAT FLOOR & WALL PANELS

RA3

Great for Parts, Storage Areas, Janitorial, Lunch & Break Rooms, Tech Locker Room Floors & Walls.

Wainscoting for Hallways, WorkShop Areas & All Back-Office Areas.

18" x 36" large format panels with rugged diamond plated surface texture to help reduce STF (slip, trip, and fall) risk.



SURFACE CAMOUFLAGE

Face Camouflage enhances the beauty of your floor by reducing the negative visual daily contaminants generated during your workday.



SCRATCH RESISTANT SURFACE

Will not dent, scratch, or chip like metal, concrete, epoxy, tile, or other finishes.



CHEMICAL RESISTANT SURFACE

Resistant to water, gasoline, MEK, acetone, motor oil, isopropanol, acetic acid, ammonia, sodium chloride solution, and other chemicals.*

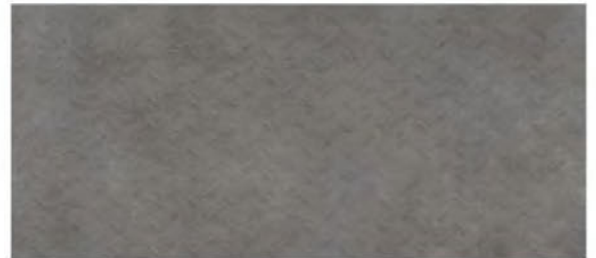


IMPACT GUARD SURFACE

Strong, rugged, and stands up to blunt force impact better than any other surface.



Grey Concrete



Deep Concrete

RA IS RECOMMENDED FOR CLIMATE CONTROLLED ENVIRONMENTS WITH A ROOF, WALL AND DOORS FLOOD SAFE, WATER RESISTANT, + SOUND REDUCTION



CLIMATE-CONTROLLED ENVIRONMENTS

For environments with a temperature room range of 40° and 104° degrees.*



FLOOD SAFE & WATER RESISTANT

Panels are moisture-resistant and can be submerged for days and remain bonded.



LESS NOISE BETTER CONDITIONS

Reduces noise decibels (dB) and improves working conditions.

So easy to install that there is no need for expensive, highly skilled labor.

So fast that you can use immediately upon installation; no cure time required.

Panels are installed edge-to-edge, and wall-to-wall for a seamless, beautiful floor.

Commercial workshops install in 1-2 days (depending on size).



RA3

RA3 PANEL PRICE



Troweled Adhesive Method*

*Troweled adhesive will be added to your quote

Thickness: 3mm

Size: 18" x 36" Panel (4.5 SQFT Per Panel)



Features Included:

- Rated for climate-controlled environments (home garage)
- Surface Camouflage
- Scratch Resistant Surface
- Chemical Resistant Surface
- Impact Guard Surface
- Industrial Strength 30 mil Wear-Layer

ClinkerShopUSA

Better technology, better performance, American made.

F-8 | FT-30, 31, 32, 33

Service Drive and Workshops



Series: ClinkerShopUSA

Color: Alloy Grey

Finish: Super.Grip.Brightfinish

Size: 4" x 8" x 1/2"

Surface Traction Conforms to:

ANSI A326.3 Use Category: 4.1.3

Interior Wet Plus (IW+). 4.1.4

Exterior Wet (EW).

4.1.5 Oils/Grease (O/G).

brightfinish
ultra-cleanable technology



MADE IN USA



Below: actual color varies, example is only representative



Grout: Laticrete Permacolor Select 78 SterlingSilver

Thinset: LHT Plus



Series: ClinkerShopUSA

Color: Genesis-Carbon Black

Finish: Super.Grip.Brightfinish

Size: 4" x 8" x 1/2"

Surface Traction Conforms to:

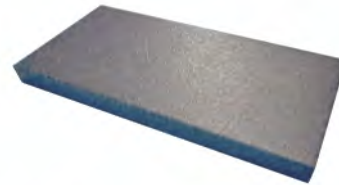
ANSI A326.3 Use Category: 4.1.3

Interior Wet Plus (IW+). 4.1.4

Exterior Wet (EW).

4.1.5 Oils/Grease (O/G).

brightfinish
ultra-cleanable technology



Below: actual color varies, example is only representative



Grout: Laticrete Permacolor Select 60 Dusty Grey

Thinset: LHT Plus

Advantages

1. Advanced surface technology to better manage STF (slip, trip & fall) risk.
2. Surface has repeating lines elevated above the bed of the tile. Designed for greater foot, shoe-sole traction.
3. Will not permanently stain or darken when properly cleaned.

Manufactured Declared Uses

Evaluate for use in automotive workshop and service drive environments

4.1.4 (Exterior, Wet) - level outdoor spaces walkways, sidewalks, where such floors may be walked upon when wet (excluding ice or snow) if level, clean, maintained and free of standing water or other contaminants.

4.1.5 (Oils/Greases) - level areas regularly exposed to automotive fluids, etc., so long as such floors are level, regularly cleaned, maintained and free of standing water and contaminant build-up. Consult with your architect to determine dealership practices. **Review ANSI A326.3 2021 standard.**

Declared Product Use & DCOF Requirement

Meets and exceeds 55 DCOF rating as required for ANSI A326.3 4.1.3 Exterior Wet.

F-8 | FT-30, 31, 32, 33

Service Drive and Workshops



Series: EnviroShop12USA
Color: Alloy Grey
Finish: Traction.Brightfinish
Size: 12" x 12"
Surface Traction Conforms to:
 ANSI A326.3 Use Category:
 4.1.3 Interior Wet Plus (IW+).

EnviroShop12usa
 smarter, better workshops

Below: actual color varies, example is only representative



Grout: Laticrete Permacolor Select 89 Smoke Grey
Thinset: LHT Plus



MADE IN USA



Series: EnviroShop12USA
Color: Smoke Grey
Finish: Traction.Brightfinish
Size: 12" x 12"
Surface Traction Conforms to:
 ANSI A326.3 Use Category:
 4.1.3 Interior Wet Plus (IW+).

Below: actual color varies, example is only representative

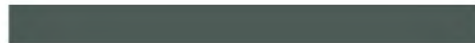


Grout: Laticrete Permacolor Select 42 Platinum
Thinset: LHT Plus



Series: EnviroShop12USA
Color: Carbon Black
Finish: Traction.Brightfinish
Size: 12" x 12"
Surface Traction Conforms to:
 ANSI A326.3 Use Category:
 4.1.3 Interior Wet Plus (IW+).

Below: actual color varies, example is only representative



Grout: Laticrete Permacolor Select 45 Raven
Thinset: LHT Plus



Advantages

1. Our original workshop floor with textured surface.
2. Surface texture is elevated above the surface bed for easier cleaning.
3. Will not permanently stain or darken when properly cleaned.
4. This product has:

slipresistant
 textured floor surfaces

Manufacturer

AutoStoneUSA

Product Use Category 4.1.3 Interior, Wet Plus (IW+)

Evaluate for interior use in automotive workshop and service drive environments with high speed doors and tech locker rooms. Enviroshop is medium traction surface. For interior applications, with good drainage. Floors walked on when wet should be level, clean, maintained and free of standing water or other contaminants. Should be cleaned with frequent maintenance to keep clean.

DCOF

Meets and exceeds .50 DCOF rating as required for ANSI A326 4.1.3 (IW+)

F-8 | FT-30, 31, 32, 33

Service Drive and Workshops



Series: DriveSeries12USA
Color: Alloy Grey
Finish: Traction3L.Brightfinish
Size: 12" x 12"
Surface Traction Conforms to:
 ANSI A326.3 Use Category: 4.1.3
 Interior Wet Plus (IW+).4.1.4
 Exterior Wet (EW).
 4.1.5 Oils/Grease (O/G).

DriveSeries12USA

advanced surface technology

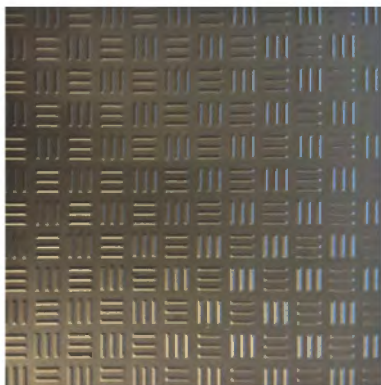


MADE IN USA

Below: actual color varies, example is only representative

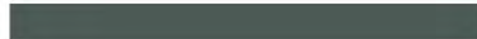


Grout: Laticrete Permacolor Select 89 Smoke Grey
Thinset: LHT Plus



Series: DriveSeries12USA
Color: Carbon Black
Finish: Traction3L.Brightfinish
Size: 12" x 12"
Surface Traction Conforms to:
 ANSI A326.3 Use Category: 4.1.3
 Interior Wet Plus (IW+). 4.1.4
 Exterior Wet (EW).
 4.1.5 Oils/Grease (O/G).

Below: actual color varies, example is only representative



Grout: Laticrete Permacolor Select 45 Raven
Thinset: LHT Plus

A permanent enhanced porcelain technology floor system. Elevated traction provides a better surface to manage STF (slip, trip, and fall) risk in your automotive service drive, workshop and tech locker room shower areas. See declared uses below. Should be cleaned with frequent maintenance to keep clean and free of contamination and debris when dealership is operating.

Advantages

1. Advanced surface technology to better manage STF (slip, trip & fall) risk.
2. Surface has repeating lines elevated above the bed of the tile. Designed for greater foot, shoe-sole traction.
3. Will not permanently stain or darken when properly cleaned.

Manufactured Declared Uses

Evaluate for use in automotive workshop and service drive environments.

4.1.4 (Exterior, Wet) - level outdoor spaces walkways, sidewalks, where such floors may be walked upon when wet (excluding ice or snow) if level, clean, maintained and free of standing water or other contaminants.

4.1.5 (Oils/Greases) - level areas regularly exposed to automotive fluids, etc., so long as such floors are level, regularly cleaned, maintained and free of standing water and contaminant build-up. Consult with your architect to determine dealership practices. **Review ANSI A326.3 2021 standard.**

Declared Product Use & DCOF Requirement

Meets and exceeds .55 DCOF rating as required for ANSI A326.3 4.1.3 Interior Wet Plus (IW+), 4.1.4 Exterior Wet (EW), and 4.1.5 Oils/Grease (O/G).

F-8 | FT-30, 31, 32, 33

Service Drive and Workshops

EnviroShop12usa

smarter, better workshops

DriveSeries12USA

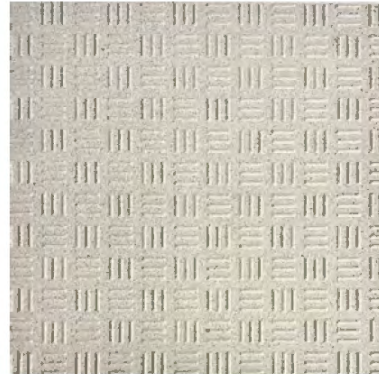
advanced surface technology



Series: EnviroShop12USA
Color: Alloy Grey
Finish: Traction.Brightfinish

Size: 12" x 12"

Surface Traction Conforms to:
ANSI A326.3 Use Category: 4.1.3
Interior Wet Plus (IW+).



Series: DriveSeries12USA
Color: Alloy Grey
Finish: Traction3L.Brightfinish

Size: 12" x 12"

Surface Traction Conforms to:
ANSI A326.3 Use Category: 4.1.3
Interior Wet Plus (IW+). 4.1.4
Exterior Wet (EW).
4.1.5 Oils/Grease (O/G).



Series: EnviroShop12USA
Color: Smoke Grey
Finish: Traction.Brightfinish
Size: 12" x 12"

Surface Traction Conforms to:
ANSI A326.3 Use Category: 4.1.3
Interior Wet Plus (IW+).

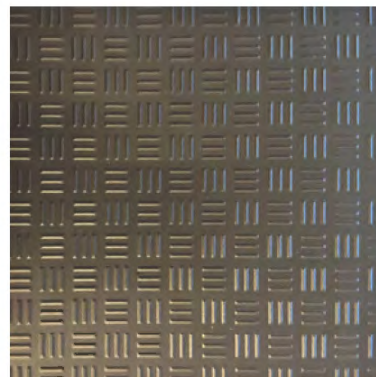


DriveSeries12USA
Smoke Grey
Currently Not Available



Series: EnviroShop12USA
Color: Carbon Black
Finish: Traction.Brightfinish
Size: 12" x 12"

Surface Traction Conforms to:
ANSI A326.3 Use Category: 4.1.3
Interior Wet Plus (IW+).



Series: DriveSeries12USA
Color: Carbon Black
Finish: Traction3L.Brightfinish
Size: 12" x 12"

Surface Traction Conforms to:
ANSI A326.3 Use Category: 4.1.3
Interior Wet Plus (IW+). 4.1.4
Exterior Wet (EW).
4.1.5 Oils/Grease (O/G).



F-8 | FT-30, 31, 32, 33

Service Drive and Workshops

eShop8usa
better technology, better results

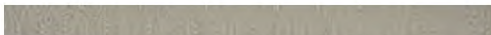


Series: eShop08USA
Color: Alloy Grey
Finish: Super.Grip.Brightfinish
Size: 8" x 8"

Surface Traction Conforms to:
ANSI A326.3 Use Category: 4.1.3
Interior Wet Plus (IW+). 4.1.4
Exterior Wet (EW).
4.1.5 Oils/Grease (O/G).

brightfinish
ultra-cleanable technology

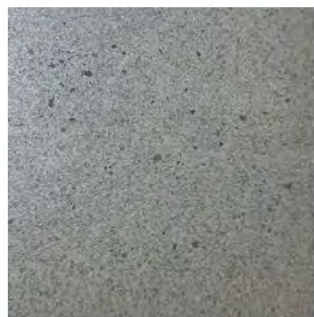
Below: actual color varies, example is only representative



Grout: Laticrete Permacolor Select 78 Sterling Silver
Thinset: LHT Plus



MADE IN USA



Series: eShop08USA
Color: Smoke Grey
Finish: Super.Grip.Brightfinish
Size: 8" x 8"

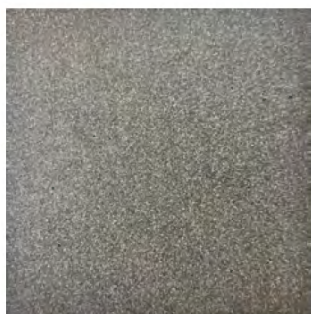
Surface Traction Conforms to:
ANSI A326.3 Use Category: 4.1.3
Interior Wet Plus (IW+). 4.1.4
Exterior Wet (EW).
4.1.5 Oils/Grease (O/G).

brightfinish
ultra-cleanable technology

Below: actual color varies, example is only representative



Grout: Laticrete Permacolor Select 42 Platinum
Thinset: LHT Plus

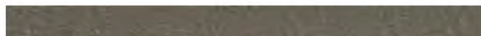


Series: eShop08USA
Color: Genesis-Carbon Black
Finish: Super.Grip.Brightfinish
Size: 8" x 8"

Surface Traction Conforms to:
ANSI A326.3 Use Category: 4.1.3
Interior Wet Plus (IW+). 4.1.4
Exterior Wet (EW).
4.1.5 Oils/Grease (O/G).

brightfinish
ultra-cleanable technology

Below: actual color varies, example is only representative



Grout: Laticrete Permacolor Select 60 Dusty Grey
Thinset: LHT Plus

Advantages

1. Advanced surface technology to better manage STF (slip, trip & fall) risk.
2. Surface has repeating lines elevated above the bed of the tile. Designed for greater foot, shoe-sole traction.
3. Will not permanently stain or darken when properly cleaned.

Manufactured Declared Uses

Evaluate for use in automotive workshop and service drive environments

4.1.4 (Exterior, Wet) - level outdoor spaces walkways, sidewalks, where such floors may be walked upon when wet (excluding ice or snow) if level, clean, maintained and free of standing water or other contaminants.

4.1.5 (Oils/Greases) - level areas regularly exposed to automotive fluids, etc., so long as such floors are level, regularly cleaned, maintained and free of standing water and contaminant build-up. Consult with your architect to determine dealership practices. **Review ANSI A326.3 2021 standard.**

Declared Product Use & DCOF Requirement

Meets and exceeds 55 DCOF rating as required for ANSI A326.3 4.1.3 Exterior Wet.

F-8 | FT-30, 31, 32, 33

Service Drive and WorkShops



Series: DriveSeries08USA
Color: Alloy Grey
Finish: Super.Grip3L.Brightfinish
Size: 8" x 8"

Surface Traction Conforms to:

ANSI A326.3 Use Category: 4.1.3
Interior Wet Plus (IW+). 4.1.4
Exterior Wet (EW).
4.1.5 Oils/Grease (O/G).



Series: DriveSeries08USA
Color: Smoke Grey
Finish: Super.Grip3L.Brightfinish
Size: 8" x 8"

Surface Traction Conforms to:

ANSI A326.3 Use Category: 4.1.3
Interior Wet Plus (IW+). 4.1.4
Exterior Wet (EW).
4.1.5 Oils/Grease (O/G).



Series: DriveSeries08USA
Color: Genesis-Carbon Black
Finish: Super.Grip3L.Brightfinish
Size: 8" x 8"

Surface Traction Conforms to:

ANSI A326.3 Use Category: 4.1.3
Interior Wet Plus (IW+). 4.1.4
Exterior Wet (EW).
4.1.5 Oils/Grease (O/G).



DriveSeries8USA
advanced surface technology

Below: actual color varies, example is only representative



Grout: Laticrete Permacolor Select 78 SterlingSilver

Thinset: LHT Plus



MADE IN USA

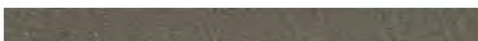
Below: actual color varies, example is only representative



Grout: Laticrete Permacolor Select 42 Platinum

Thinset: LHT Plus

Below: actual color varies, example is only representative



Grout: Laticrete Permacolor Select 60 Dusty Grey

Thinset: LHT Plus

Advantages

1. Advanced surface technology to better manage STF (slip, trip & fall) risk.
2. Surface has repeating lines elevated above the bed of the tile. Designed for greater foot, shoe-sole traction.
3. Will not permanently stain or darken when properly cleaned.

Manufactured Declared Uses

Evaluate for use in automotive workshop and service drive environments

4.1.4 (Exterior, Wet) - level outdoor spaces walkways, sidewalks, where such floors may be walked upon when wet (excluding ice or snow) if level, clean, maintained and free of standing water or other contaminants.

4.1.5 (Oils/Greases) - level areas regularly exposed to automotive fluids, etc., so long as such floors are level, regularly cleaned, maintained and free of standing water and contaminant build-up. Consult with your architect to determine dealership practices. **Review ANSI A326.3 2021 standard.**

Declared Product Use & DCOF Requirement

Meets and exceeds 55 DCOF rating as required for ANSI A326.3 4.1.3 Exterior Wet.

The AutoStoneUSA Mercedes Team



Mercedes-Benz

General and immediate online help.
You can find most information including quotes
on our Mercedes Brand Webpage

Mercedes-Benz Sales Team

mercedes@autostoneusa.com

<https://autostoneusa.com/mercedes/>
214-393-4875 phone



**If you are a flooring
contractor and
need pricing**



**If you are the brand,
brand architect, or
brand CM**

Lezlie Ferrell, Director of Sales

lezlie@autostoneusa.com

214-393-4861 direct dial



**If you are a car
dealer**

Barry Wells, President

barry@autostoneusa.com

214-393-4862 direct dial



**If you are the
GC
builder/contractor**



**If you are the
AOR
local architect**

Rachel Metcalf, Architectural Liaison

rachel@autostoneusa.com

214-387-19551 direct dial

Lezlie Ferrell, Director of Sales

lezlie@autostoneusa.com

214-393-4861 direct dial