

Mercedes-Benz Tile Guide



Made in USA

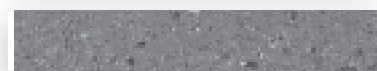
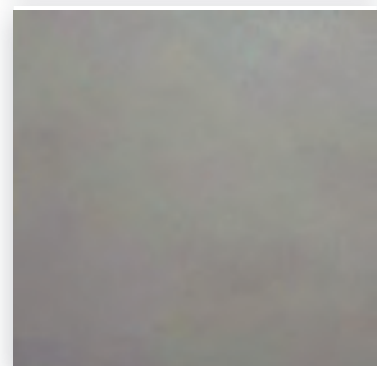
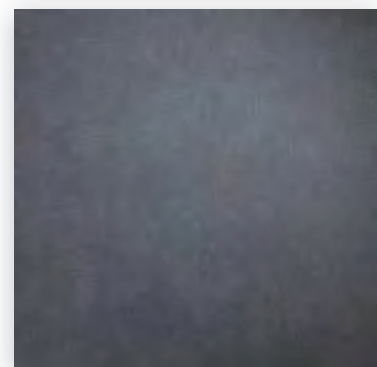
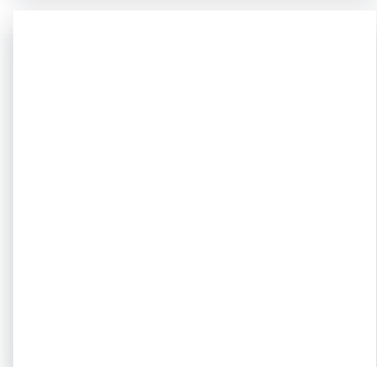
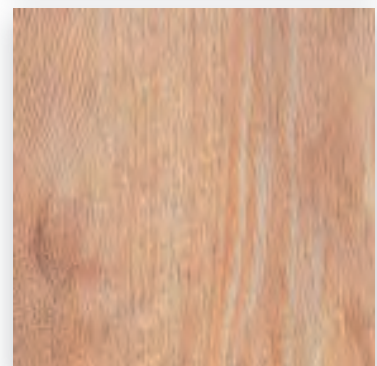
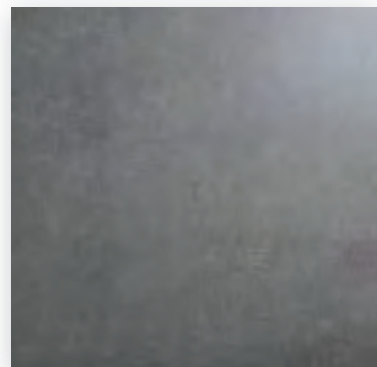
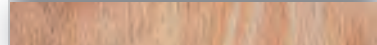
2024.1 - Edition

Mercedes-Benz Certified Evolution Image Program

(formerly Autohaus3)

AutoStoneUSA.com/Mercedes-Benz

Click image below for video introduction on materials

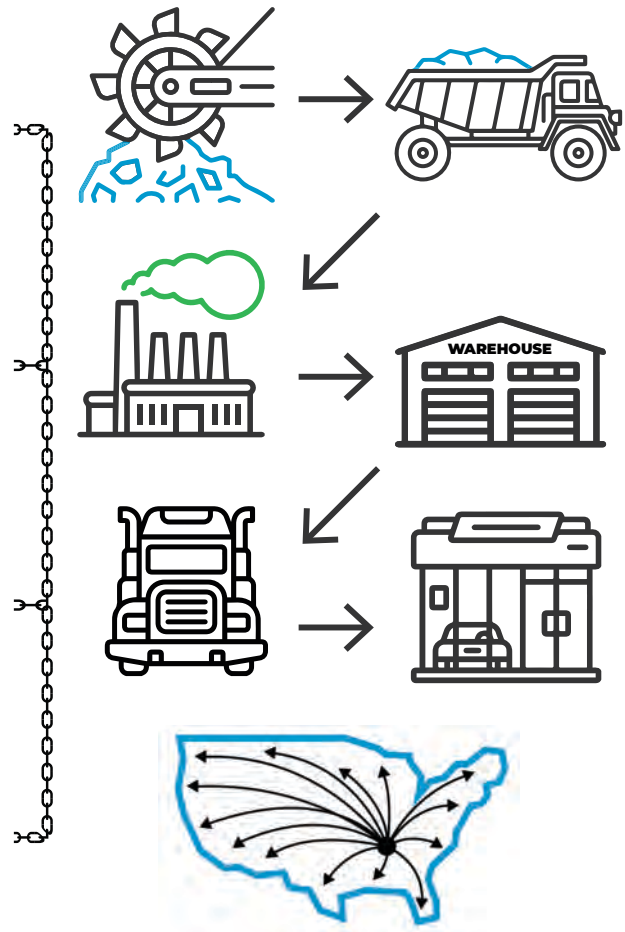




Q2KD

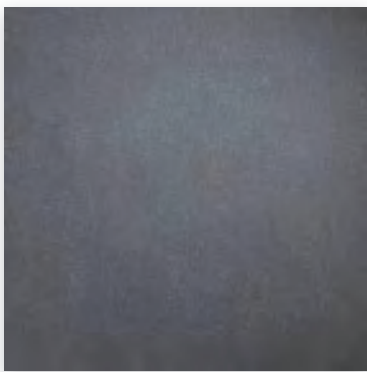
QUARRY TO KILN DISTRIBUTION MODEL

- 1** **LOCALLY SOURCED & LOCALLY QUARRIED**
 - ✓ Elimination of trans-ocean shipping
 - ✓ US jobs, shorter supply chain
- 2** **DOMESTICALLY PRODUCED & LOCALLY WAREHOUSED**
 - ✓ Less shipping
 - ✓ Reduced carbon footprint
- 3** **CONSOLIDATED SHIPPING DIRECT TO YOUR DEALERSHIP**
 - ✓ Eliminates distribution shipping
 - ✓ Reduces use of fossil fuel
- 4** **DOMESTICALLY PRODUCED SMARTER & EFFICIENT DISTRIBUTION**
 - ✓ Better for the environment
 - ✓ Saves you money





Showroom Vehicle Display & Customer Areas



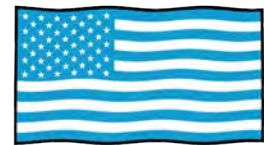
Black Asphalt

Series: AutohausUSA
Color: Black Asphalt
Finish: Textured Asphalt
Size: 24" x 24" (nominal)
Edge: Rectified profile (exact dimension)
Product Code:
AS.MB.AH.2424.BLKASP.TXA

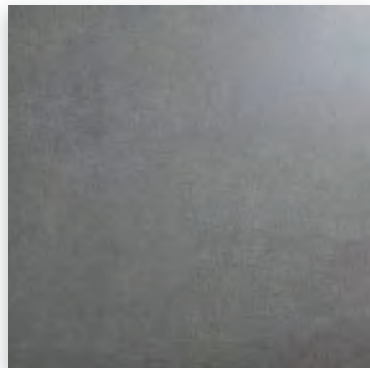
Below: actual color varies, example is only representative



Grout: Laticrete Permacolor Select 22 Midnight Black
Thinset: LHT Plus



MADE IN USA



Deep Grey Asphalt

Series: AutohausUSA
Color: Deep Grey Asphalt
Finish: Textured Asphalt
Size: 24" x 24" (nominal)
Edge: Rectified profile (exact dimension)
Product Code:
AS.MB.AH.2424.DGASP.TXA

Below: actual color varies, example is only representative



Grout: Laticrete Permacolor Select 60 Dusty Grey
Thinset: LHT Plus



MADE IN USA

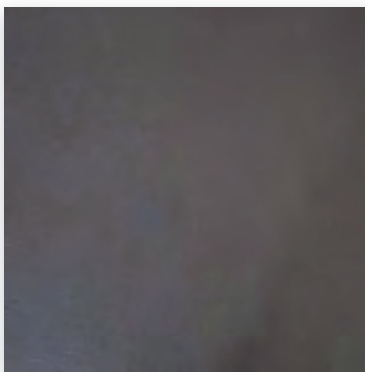
Contact Information

Phone: 214-393-4875 (Mercedes-Benz Line) **Email:** mercedes@autostoneusa.com





Showroom Vehicle Display & Customer Areas



Nero

Series: AutobahnUSA - NEW

Color: Nero

Finish: Natural | Textured

Size: 24" x 24" (nominal)

Edge: Rectified profile (exact dimension)

Product Code:

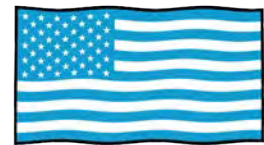
AS.MB.USA.2424.NERO.NAT

Below: actual color varies, example is only representative

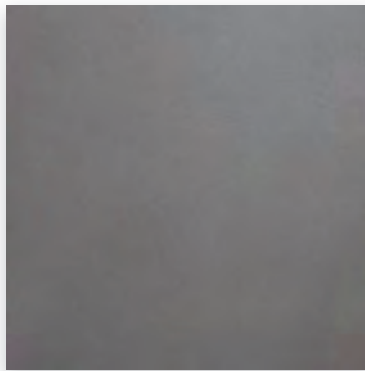


Grout: Laticrete Permacolor Select 22 Midnight Black

Thinset: LHT Plus



MADE IN USA



City

Series: AutobahnUSA - NEW

Color: City

Finish: Natural | Textured

Size: 24" x 24" (nominal)

Edge: Rectified profile (exact dimension)

Product Code:

AS.MB.USA.2424.CI.NAT

Below: actual color varies, example is only representative



Grout: Laticrete Permacolor Select 45 Raven

Thinset: LHT Plus



MADE IN USA

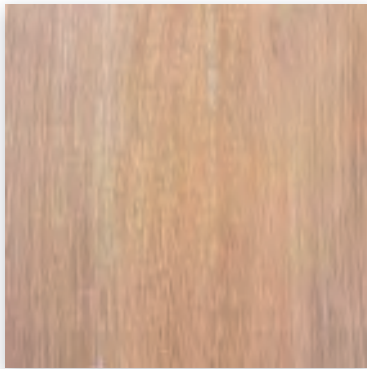
Contact Information

Phone: 214-393-4875 (Mercedes-Benz Line) Email: mercedes@autostoneusa.com





Customer Lounge & Customer Restrooms



Maple Harvest

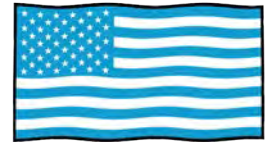
Series: WoodPlankUSA
Color: Maple Harvest
Finish: Natural | Texture
Size: 8" x 48" (nominal)

PORCELAIN WoodPlank

Below: actual color varies, example is only representative



Grout: Laticrete Permacolor Select 81 Buttercream
Thinset: LHT Plus



MADE IN USA



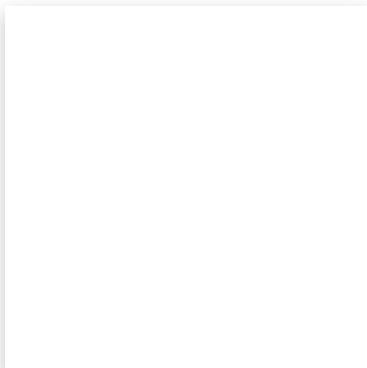
Maple Beech

Series: LV Woodplank
Color: Maple Beech
Finish: Textured Wood Grain
Size: 7" x 48" (nominal)
Edge: Rectified profile (exact dimension)
Product Code:
AS.MB.AH3.0748.GMP004-1.Resp
Thickness:

LV WoodPlank Automotive Retail Collection



STOCKED IN USA



WT-1 & WT-3

Series: Premier
Color: Bright White Ice
Finish: Glossy
Size: 3" x 6" or 6" x 6" and 12" x 24"
Product Code (3" x 6"):
WT-1 (Alternate)
Product Code (6" x 6"):
WT-3 (Alternate)
Product Code (12" x 24"):
WT-3 (Alternate)

Below: actual color varies, example is only representative



Grout: Laticrete Permacolor Select 44 Bright White
Thinset: LHT Plus



STOCKED IN USA

Contact Information

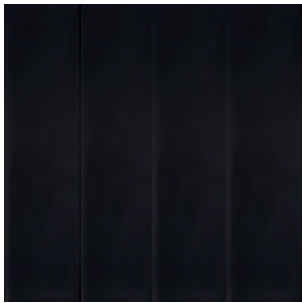
Phone: 214-393-4875 (Mercedes-Benz Line) **Email:** mercedes@autostoneusa.com



autostone
floor systems



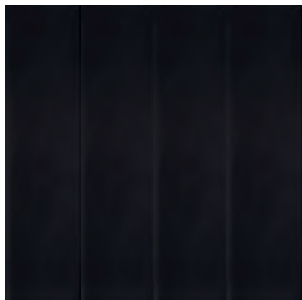
Customer Lounge & Customer Restrooms



Series: Station America - A
Color: Black
Finish: Matte Bold
Size: 4" x 16"
Note: Install either horizontal or vertical stack.



STOCKED IN USA



Series: Station America - A
Color: Black
Finish: Glossy Bold
Size: 4" x 16"
Note: Install either horizontal or vertical stack.

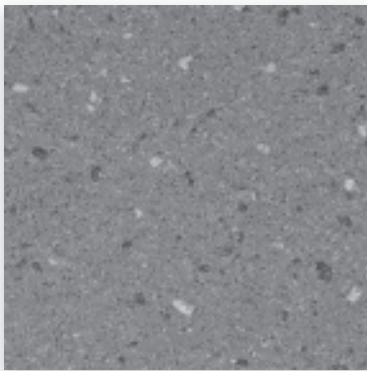


Series: Station America - B
Color: Black
Finish: Matte Bold
Size: 4" x 16"
Note: Install either horizontal or vertical stack.



Series: Station America - B
Color: Black
Finish: Glossy Bold
Size: 4" x 16"
Note: Install either horizontal or vertical stack.





F-8 | FT-30, 31, 32, 33 Service Drive and Workshops

Below: actual color varies, example is only representative

Series: Enviroshop

Color: Smoke Grey

Size: 12" x 12" U.S. Nominal Dimensions

**Dimension may vary within (+) or (-) 2mm in sizing*

Finish: Textured



Grout: Laticrete Permacolor 42 Platinum

Thinset: LHT Plus



FT-8 | FT-30, 31, 32, 33

Series: Enviroshop

Color: Alloy Grey

Size:

12" x 12" U.S. Nominal Dimensions

11 7/8" x 11 7/8" Actual Dimensions

**Dimension may vary within (+) or (-) 2mm in sizing*

Finish: Textured

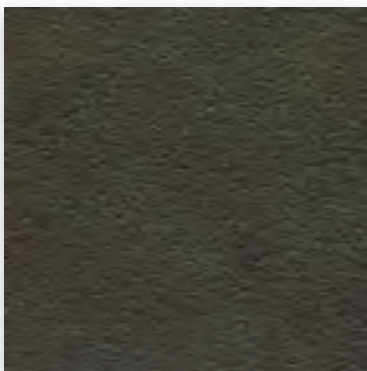


Below: actual color varies, example is only representative



Grout: Laticrete Permacolor 89 Smoke Grey

Thinset: LHT Plus



F-8 | FT-30, 31, 32, 33

Series: Enviroshop

Color: Carbon Black

Size:

12" x 12" U.S. Nominal Dimensions

11 7/8" x 11 7/8" Actual Dimensions

**Dimension may vary within (+) or (-) 2mm in sizing*

Finish: Textured



Below: actual color varies, example is only representative



Grout: Laticrete Permacolor 45 Raven

Thinset: LHT Plus



Product Use Category 4.1.3. Interior, Wet Plus (IW+)

4.1.3 (nterior, Wet Plus) - Evaluate for interior use in automotive workshop and service drive environments with high speed doors and tech locker rooms. Enviroshop is medium traction surface. For interior applications, with good drainage. Floors walked on when wet if level, clean, maintained and free of standing water or other contaminants. Should be cleaned with frequent maintenance to keep clean.

- Stocked USA ■ Alloy Grey
- Stocked USA ■ Smoke Grey
- Stocked USA ■ Carbon Black

* thickness tolerance is: (+) or (-) .5mm





FT-8 | FT-30, 31, 32, 33

Series: DriveSeriesUSA
Color: Alloy Grey
Finish: SLR Shop Textured
Size: 12" x 12" (nominal size)



Below: actual color varies, example is only representative



Grout: Laticrete Permacolor 89 Smoke Grey
Thinset: LHT Plus



F-8 | FT-30, 31, 32, 33

Series: DriveSeriesUSA
Color: Genesis-Carbon Black
Finish: SLR Shop Textured
Size: 12" x 12" (nominal size)



Below: actual color varies, example is only representative



Grout: Laticrete Permacolor Select 45 Raven
Thinset: LHT Plus

Description

A permanent enhanced porcelain technology floor system. Elevated traction provides a better surface to manage STF (slip, trip, and fall) risk in your automotive service drive, workshop and tech locker room shower areas. See declared uses below. Should be cleaned with frequent maintenance to keep clean and free of contamination and debris when dealership is operating. Spot spills should be removed immediately and not left on surface. Floor cleaning should include use of de-greasing chemical, floor scrubber sweeper machine with wet vacuum to suck-up dirty water and debris as part of cleaning process.

Advantages

1. Advanced surface technology to better manage STF (slip, trip & fall) risk.
2. Surface has repeating lines elevated above the bed of the tile. Designed for greater foot, shoe-sole traction.
3. Will not permanently stain or darken when properly cleaned.

Manufactured Declared Uses

Evaluate for use in automotive workshop and service drive environments
4.1.4 (Exterior, Wet) - level outdoor spaces walkways, sidewalks, where such floors may be walked upon when wet (excluding ice or snow) if level, clean, maintained and free of standing water or other contaminants.
4.1.5 (Oils/Greases) - level areas regularly exposed to automotive fluids, etc., so long as such floors are level, regularly cleaned, maintained and free of standing water and contaminant build-up. Consult with your architect to determine dealership practices. **Review ANSI A326.3 2021 standard.**

Declared Product Use & DCOF Requirement

Meets and exceeds 55 DCOF rating as required for ANSI A326.3 4.1.3 Exterior Wet.



F-8 | FT-30, 31, 32, 33



Series: eShop2USA
Color: Alloy Grey
Finish: SLR Shop Textured
Size: 08" x 08" (nominal size)



Below: actual color varies, example is only representative



Grout: Laticrete Permacolor 89 Smoke Grey
Thinset: LHT Plus



F-8 | FT-30, 31, 32, 33

Series: eShop2USA
Color: Genesis-Carbon Black
Finish: SLR Shop Textured
Size: 08" x 08" (nominal size)



Below: actual color varies, example is only representative



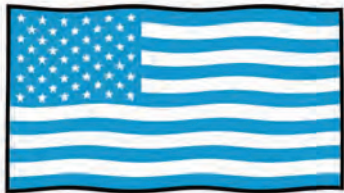
Grout: Laticrete Permacolor Select 45 Raven
Thinset: LHT Plus



Material Availability

MADE IN USA

Product stocked in USA warehouse
1 week preparation + ground shipping



Easy to work with,
helpful, & supportive



The MOST
affordable tile choice!



FT-8 | FT-30, 31, 32, 33 *driveseries* USA

Series: DriveSeriesUSA
Color: Alloy Grey
Finish: SLR Shop Textured
Size: 08" x 08" (nominal size)



Below: actual color varies, example is only representative



Grout: Laticrete Permacolor 89 Smoke Grey
Thinset: LHT Plus

F-8 | FT-30, 31, 32, 33

Series: DriveSeriesUSA
Color: Genesis-Carbon Black
Finish: SLR Shop Textured
Size: 08" x 08" (nominal size)



Below: actual color varies, example is only representative



Grout: Laticrete Permacolor Select 45 Raven
Thinset: LHT Plus

Description

A permanent enhanced porcelain technology floor system. Elevated traction provides a better surface to manage STF (slip, trip, and fall) risk in your automotive service drive, workshop and tech locker room shower areas. See declared uses below. Should be cleaned with frequent maintenance to keep clean and free of contamination and debris when dealership is operating. Spot spills should be removed immediately and not left on surface. Floor cleaning should include use of de-greasing chemical, floor scrubber sweeper machine with wet vacuum to suck-up dirty water and debris as part of cleaning process.

Advantages

1. Advanced surface technology to better manage STF (slip, trip & fall) risk.
2. Surface has repeating lines elevated above the bed of the tile. Designed for greater foot, shoe-sole traction.
3. Will not permanently stain or darken when properly cleaned.

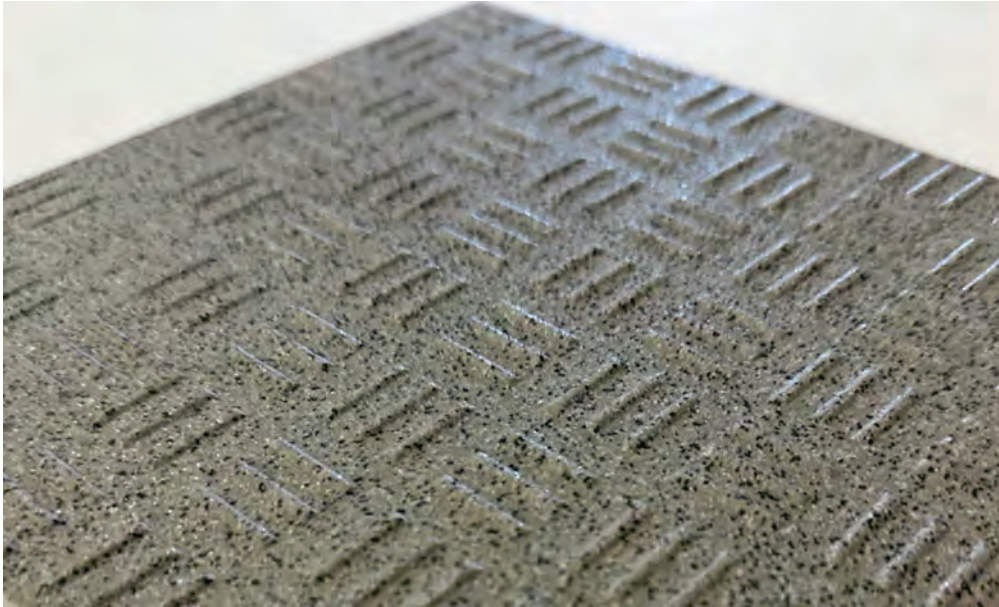
Manufactured Declared Uses

Evaluate for use in automotive workshop and service drive environments
4.1.4 (Exterior, Wet) - level outdoor spaces walkways, sidewalks, where such floors may be walked upon when wet (excluding ice or snow) if level, clean, maintained and free of standing water or other contaminants.
4.1.5 (Oils/Greases) - level areas regularly exposed to automotive fluids, etc., so long as such floors are level, regularly cleaned, maintained and free of standing water and contaminant build-up. Consult with your architect to determine dealership practices. **Review ANSI A326.3 2021 standard.**

Declared Product Use & DCOF Requirement

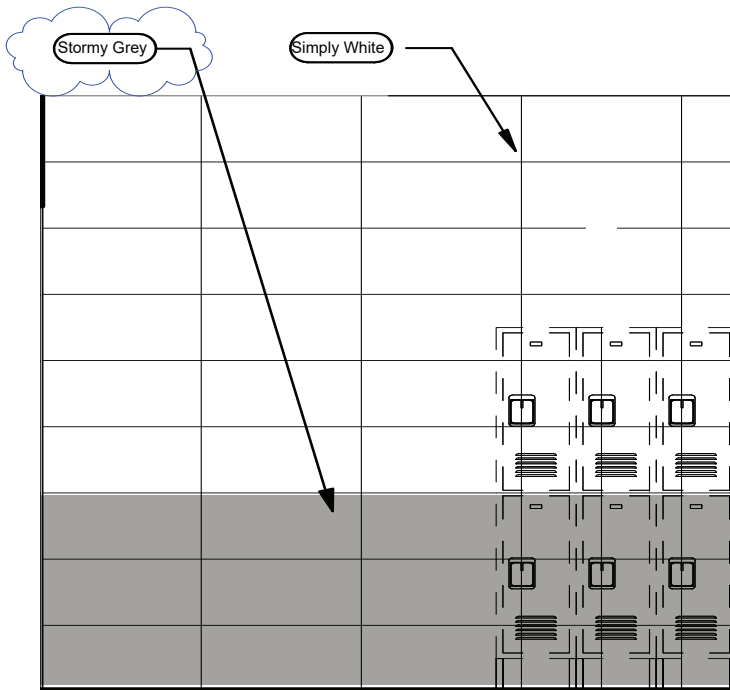
Meets and exceeds 55 DCOF rating as required for ANSI A326.3 4.1.3 Exterior Wet.

| Size | | Alloy Grey | Genesis - Carbon Black |
|---|--|---|---|
| <p>08" x 08"*</p> <p><small>* = NOMINAL SIZE Dimensions may vary within (+) or (-) 2mm in sizing</small></p> | <p>10 MM*</p> <p>.394"</p> <p><small>* thickness tolerance is: (+) or (-) .5mm</small></p> |  |  |



ShopWalls!

12" x 24" Series



Tech Locker Room Walls

Tech locker rooms are non-customer contact areas and brand programs allow dealers and their architects discretion over your material selection.

ShopWalls! provides dealers an affordable and attractive wall tile material designed for these specific environments.

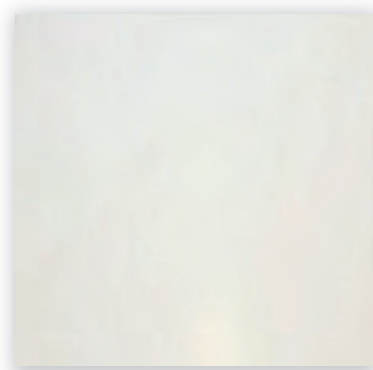
This larger format (12" x 24") tile minimizes grout lines while creating a modern and attractive environment for your service techs. Rectified edges for precise & tight grout joint alignment.

Benefits includes wall surfaces that are easy to clean so they are maintained in a "like-new" appearance.

Pricing is affordable and these materials can ship with other AutoStone materials to reduce freight costs.

Affordable, available, and designed for your tech walls! All materials ship together to reduce repetitive fossil fuel use.

No supply chain challenges or delivery delays.



Tech Restroom Walls

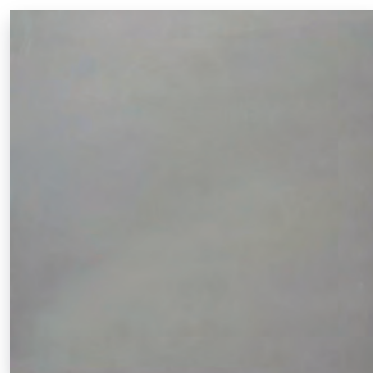
Color: Simply White

Finish: Satin

Size: 12" x 24" (nominal)



STOCKED IN USA



Tech Restroom Walls

Color: Stormy Grey

Finish: Glossy

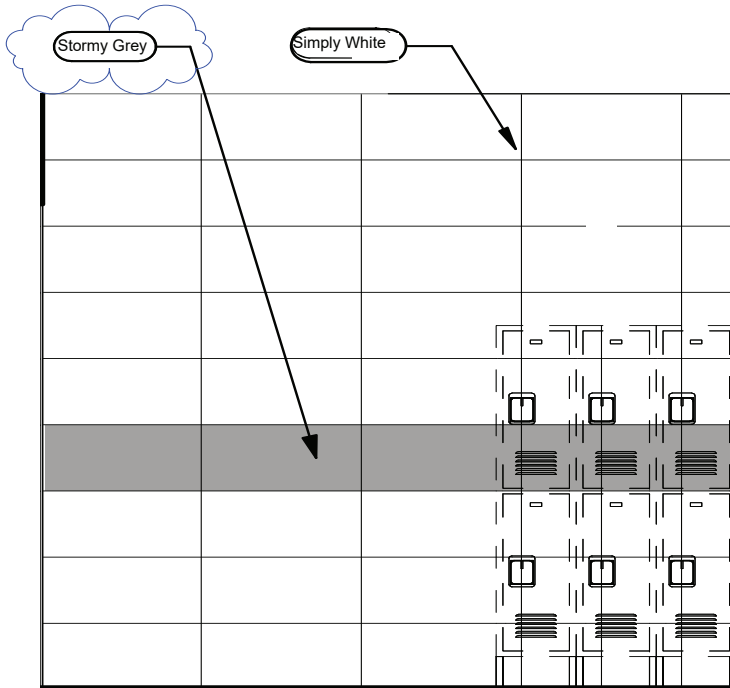
Size: 12" x 24" (nominal)



STOCKED IN USA

ShopWalls!

12" x 24" Series

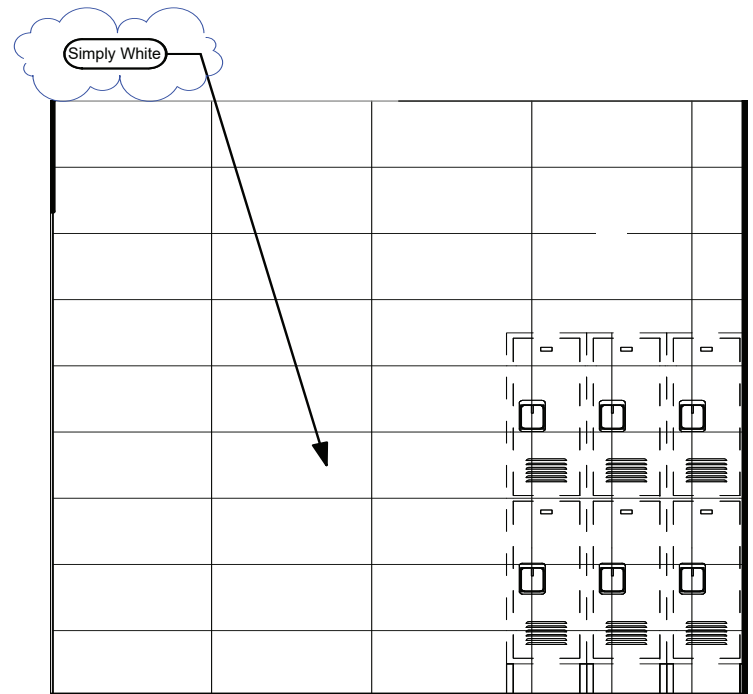
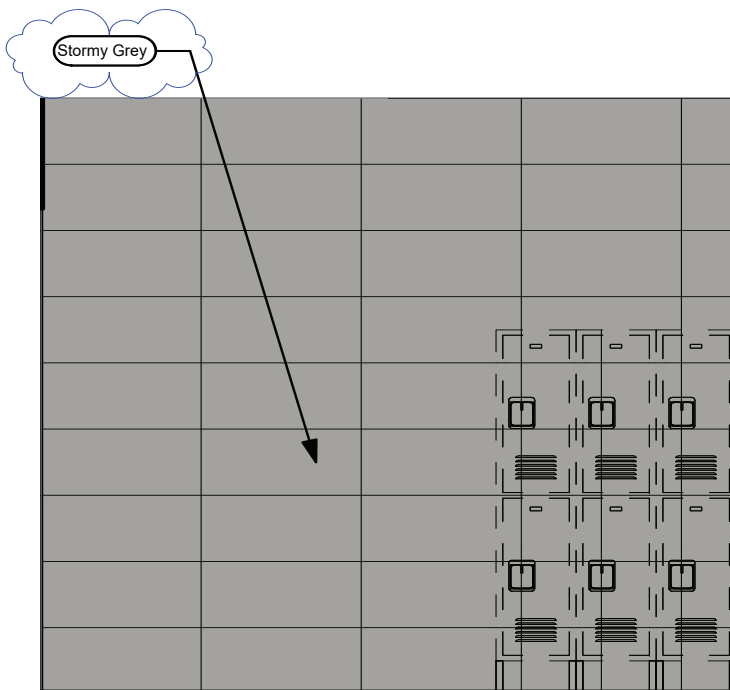


Tech Locker Room Walls

ShopWalls! have rectified edges for precise tile alignment and tight grout joints.

Both colors are the exact size and are designed as a system to support your wet wall, locker room wall environment needs.

Affordable, available and the right choice for your automotive project.



enviroshop

smarter, better, workshops

brightfinish

ultra cleanable technology



Brightfinish is a permanent sealant applied during manufacturing process which seals tile surface to resist staining. Additionally, brightfinish aids cleaning practices so floors can be kept in a "like-new" condition for the life of the dealership with regularly scheduled and proper cleaning practices.

Product Use Category 4.1.3. Interior, Wet Plus (IW+)

4.1.3 (Interior, Wet Plus) - Evaluate for interior use in automotive workshop and service drive environments with high speed doors and tech locker rooms. Enviroshop is medium traction surface. For interior applications, with good drainage. Floors walked on when wet if level, clean, maintained and free of standing water or other contaminants. Should be cleaned with frequent maintenance to keep clean.

DCOF

Meets and exceeds .50 DCOF rating as required for ANSI A326 4.1.3 (IW+)

driveseries!

advanced surface technology

brightfinish

ultra cleanable technology



Brightfinish is a permanent sealant applied during manufacturing process which seals tile surface to resist staining. Additionally, brightfinish aids cleaning practices so floors can be kept in a "like-new" condition for the life of the dealership with regularly scheduled and proper cleaning practices.

Product Use Category 4.1.4 Exterior Wet (EW) & 4.1.5 (O/G)

Evaluate for use in automotive workshop and service drive environments.

4.1.4 (Exterior, Wet) - level outdoor spaces walkways, sidewalks, where such floors may be walked upon when wet (excluding ice or snow) if level, clean, maintained and free of standing water or other contaminants.

4.1.5 (Oils/Greases) - level areas regularly exposed to automotive fluids, etc., so long as such floors are level, regularly cleaned, maintained and free of standing water and contaminant build-up. Consult with your architect to determine dealership practices. Review ANSI A326.3 2021 standard.

DCOF

Meets and exceeds .55 DCOF rating as required for ANSI A326.3 4.1.4. Exterior Wet and 4.1.5 Oils/ Grease.

Recommendations

Surface is a non-vitreous (impervious) enhanced porcelain tile. Oil, grease and all contaminants will remain on surface until properly cleaned. Floors should be cleaned with frequent maintenance to keep clean and free of contamination and debris when dealership is operating. To best manage STF (slip, trip, and fall) risk, spills and chemicals should be spot cleaned immediately and not left on surface. Floor cleaning should include use of de-greasing chemical, floor scrubber sweeper machine with wet vacuum to suck-up dirty water and debris as part of cleaning process.

For specific use applications, please consult with your architect or builder, or contact AutoStone USA with questions.



Warranty

AutoStone offers a tile materials defect warranty. AutoStone offers an installation warranty when warranty services are contracted through AutoStone. Length of Warranty is dependent upon contracted term. AutoStone does not offer any warranty of any kind when a third party installer is involved except the tile materials defect warranty. AutoStone has put together a unique package of products with Laticrete to provide contractors a 10 year warranty from Laticrete, when the purchase the correct materials directly through AutoStone.

See Warranties on our website for specifics.

Build with AutoStone

AutoStone is the best choice for your Mercedes-Benz Certified EVOlve Compliant project. We are approved for: showroom, service drive and shop floor materials. Select AutoStone for your Mercedes-Benz brand compliant dealership tile finish.

One provider for your entire facility. Go with the experts, select AutoStone.
All materials are built and manufactured to build better Mercedes-Benz dealerships!

Installation

See AutoStone recommended 09300 specifications for thinset standards on concrete substrate and AutoStone recommended installation standards.

Contact Information

Email: mercedes@autostoneusa.com or mercedes-benz@autostoneusa.com

Phone: 214-393-4875 (Mercedes-Benz Line)

autostone
floor systems



Warranty

See AutoStoneUSA materials warranty.

Build with AutoStone

Our program supports Mercedes-Benz dealers with the highest quality, most affordable and comprehensive floor tile system for your dealership project. Affordable, high-quality, and easy to do business with are what you will experience with AutoStone. Call us today to support your project.

Installation

See AutoStone recommended 09300 specifications for thinset standards on concrete substrate and AutoStone recommended installation standards.

AutoStoneUSA Support

AutoStone has a team that supports your Mercedes-Benz project. If your call is not answered immediately, you will receive a return call no later than one business day. All emails are monitored and will be responded to quickly. We are here to support your project!

Request for Quote

mercedes@autostoneusa.com
this email goes to the entire Mercedes-Benz team!
214-393-4875 phone

Mercedes-Benz Team Members Contact Information:

Barry Wells
Aaron Stanley
Gage Thomas
Don Ton
Sarah Brockway

barry@autostoneusa.com
aaron@autostoneusa.com
gage@autostoneusa.com
don@autostoneusa.com
sarah@autostoneusa.com

Senior Management:

Barry Wells

Mobile: 214-830-1206

Direct: 214-393-4862

