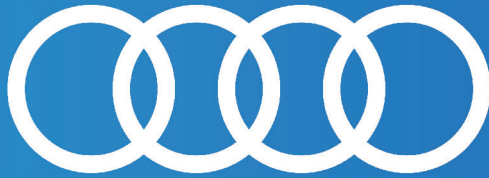


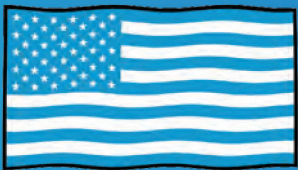
## Audi Tile Guide

*2024.01 Edition*

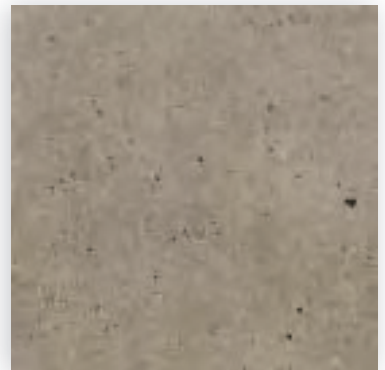


Audi Architectural Terminal Program

[AutoStoneUSA.com/Audi](https://AutoStoneUSA.com/Audi)

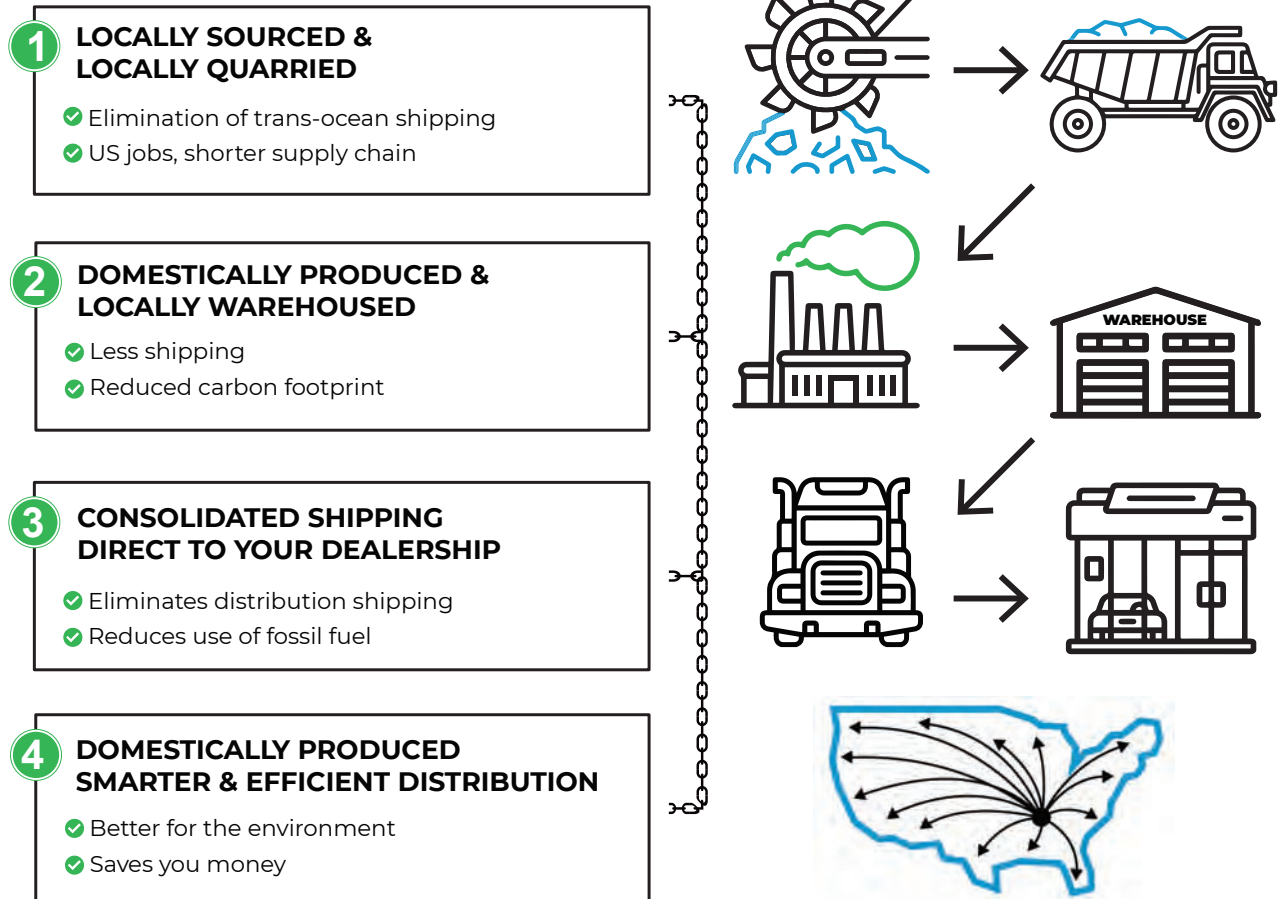


**MADE IN AMERICA**



# Q2KD

## QUARRY TO KILN DISTRIBUTION MODEL





## F-4 Showroom & Customer Contact Areas

<b>Series:</b>	SilverstoneUSA
<b>Color:</b>	Taupe
<b>Finish:</b>	Honed   Natural
<b>Size:</b>	32"x32" (U.S. Nominal Dimensions)
<b>ANSI A326:</b>	Interior Dry (ID) & Interior Wet (IW) > .42 DCOF Dry and > .42 DCOF Wet



Below: actual color varies, example is only representative

**Grout:** Laticrete Permacolor Select

**Color:** 24 Natural Grey

**Thinset:** LHT Plus

### REDUCED FOSSIL FUEL USE AND REDUCED CARBON FOOTPRINT - AUTOSTONEUSA

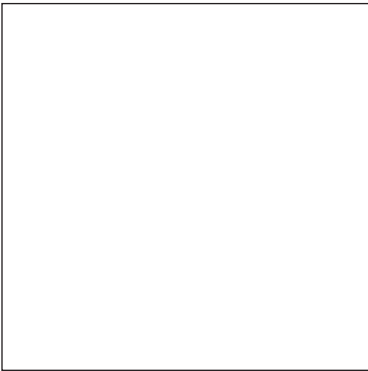
AutoStoneUSA "Made in America" materials do more than reduce costs. We reduce carbon emissions by eliminating trans-ocean shipping. We source raw materials regionally and near our production facilities. We eliminate the import of raw materials from other countries which repeat the dependency and use of fossil fuels, and additional trans-ocean shipping.

Trans-ocean shipping is heavily dependent on over-stressed ports which include over-land trucking and transport. This further expands use of fossil-fuels. Additionally, AutoStoneUSA warehouses near our production and we eliminate shipping through distribution systems and instead ship directly to your project site.

The AutoStoneUSA Quarry to Kiln method significantly reduces carbon emissions.

- AutoStone USA manufactures with locally quarried and locally sourced raw materials.
- AutoStone USA manufactures in state-of-the-art, energy and environmentally efficient facilities.
- AutoStone USA has significantly shortened our supply chain which reduces our carbon footprint and supply chain risk.
- The longer the supply chain, the greater the risk and larger the carbon footprint.
- AutoStone USA manufacturing creates American jobs, supports communities, and increases domestic investment.

No other tile company has committed to domestic (USA) production in support of the automotive retail facility like AutoStone USA. No other tile company supports your Genesis project better!



Tech Locker Walls

Series: ShopWalls!

Color: Taupe

Finish: Satin

Size: 12" x 24"

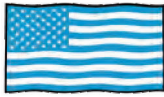
(U.S. Nominal Dimensions)

Size: 03" x 06"

(U.S. Nominal Dimensions)

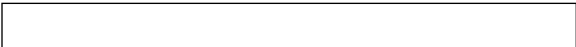
Color: BrightWhite

Finish: Glossy



STOCKED IN  
USA

Below: actual color varies, example is only representative



Grout: Laticrete Permacolor Select 44 Bright White

Thinset: LHT Plus



Tech Locker Walls

Series: ShopWalls!

Color: Stormy Grey

Finish: Glossy

Size: 12" x 24" (U.S. Nominal Dimensions)



STOCKED IN  
USA

Below: actual color varies, example is only representative



Grout: Laticrete Permacolor 89 Smoke Grey

Thinset: LHT Plus



Workshop & Tech Walls

Series: ShopWalls!

Color: Granita Grey

Finish: Satin

Size: 8" x 8" (U.S. Nominal Dimensions)



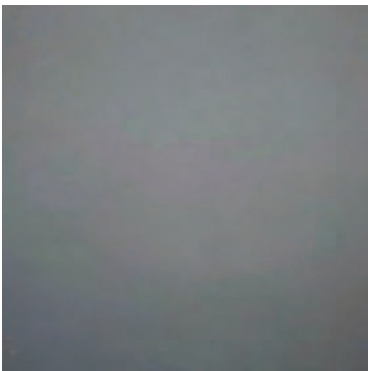
STOCKED IN  
USA

Below: actual color varies, example is only representative



Grout: Laticrete Permacolor 89 Smoke Grey

Thinset: LHT Plus



Workshop & Tech Walls

Series: ShopWalls!

Color: Anthracite Grey

Finish: Satin

Size: 8" x 8" (U.S. Nominal Dimensions)



STOCKED IN  
USA

Below: actual color varies, example is only representative



Grout: Laticrete Permacolor 89 Smoke Grey

Thinset: LHT Plus







## F-8 Alloy Grey

Series: [DriveSeriesUSA](#)

Color: Alloy Grey

Finish: Brightfinish | R12 Textured

Surface: High Traction

Size: 8" x 8" (U.S. Nominal Dimensions)

**driveseries**  
**USA**

**brightfinish**  
ultra-cleanable technology



Below: actual color varies, example is only representative



Grout: Laticrete Permacolor 89 Smoke Grey

Thinset: LHT Plus



## F-8 Genesis-Carbon Black

Series: [DriveSeriesUSA](#)

Color: Genesis-Carbon Black

Finish: Brightfinish | R12 Textured

Surface: High Traction

Size: 8" x 8" (U.S. Nominal Dimensions)

**driveseries**  
**USA**

**brightfinish**  
ultra-cleanable technology



Below: actual color varies, example is only representative



Grout: Laticrete Permacolor 89 Smoke Grey

Thinset: LHT Plus

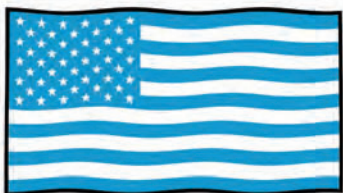
**driveseries!**  
advanced surface technology

## Material Availability

### MADE IN USA

Product stocked in USA warehouse

1 week preparation + ground shipping



### Manufactured Declared Uses

Evaluate for use in automotive workshop and service drive environments.

**4.1.4 (Exterior, Wet)** - level outdoor spaces walkways, sidewalks, where such floors may be walked upon when wet (excluding ice or snow) if level, clean, maintained and free of standing water or other contaminants.

**4.1.5 (Oils/Greases)** - level areas regularly exposed to automotive fluids, etc., so long as such floors are level, regularly cleaned, maintained and free of standing water and contaminant build-up. Consult with your architect to determine dealership practices. **Review ANSI A326.3 2021 standard.**

### Declared Product Use & DCOF Requirement

Meets and exceeds .55 DCOF rating as required for ANSI A326.3 4.1.3 Exterior Wet.

Easy to work with,  
helpful, & supportive

The MOST  
affordable tile choice!



## F-8 Alloy Grey

**Series:** eShop2USA

**Color:** Alloy Grey

**Finish:** SLR Shop Textured

**Size:** (U.S. Nominal Dimensions)

8" x 8"

**eshop2usa**  
better technology, better results



Below: actual color varies, example is only representative



**Grout:** Laticrete Permacolor 89 Smoke Grey

**Thinset:** LHT Plus



## F-8 Genesis-Carbon Black

**Series:** eShop2USA

**Color:** Genesis-Carbon Black

**Finish:** SLR Shop Textured

**Size:** (U.S. Nominal Dimensions)

8" x 8"

**eshop2usa**  
better technology, better results



Below: actual color varies, example is only representative



**Grout:** Laticrete Permacolor Select 45 Raven

**Thinset:** LHT Plus

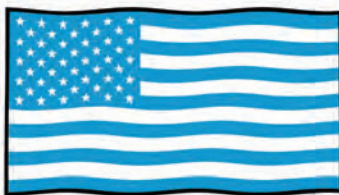
**eshop2usa**  
better technology, better results

## Material Availability

### MADE IN USA

Product stocked in USA warehouse

1 week preparation + ground shipping



Easy to work with,  
helpful, & supportive



The MOST  
affordable tile choice!





## F-8 Alloy Grey

Series: [Enviroshop](#)

Color: Alloy Grey

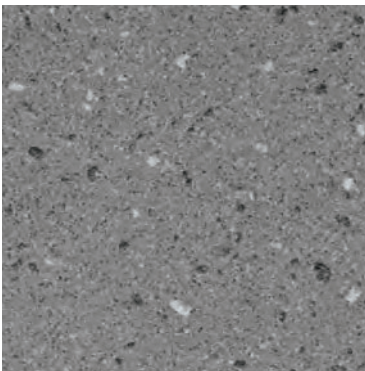
Finish: Brightfinish | Textured

Surface: Medium Traction

Size: 12" x 12" (U.S. Nominal Dimensions)

**enviroshop** **brightfinish**  
smarter, better, workshops ultra-cleanable technology

**enviroshop**  
smarter, better workshops



## F-8 Smoke Grey

Series: [Enviroshop](#)

Color: Smoke Grey

Finish: Brightfinish | Textured

Surface: Medium Traction

Size: 12" x 12" (U.S. Nominal Dimensions)

**enviroshop** **brightfinish**  
smarter, better, workshops ultra-cleanable technology



**MADE IN USA**



## F-8 Carbon Black

Series: [Enviroshop](#)

Color: Carbon Black

Finish: Brightfinish | Textured

Surface: Medium Traction

Size: 12" x 12" (U.S. Nominal Dimensions)

**enviroshop** **brightfinish**  
smarter, better, workshops ultra-cleanable technology

**enviroshop**  
smarter, better, workshops

## Material Availability

Stocked USA ■ Alloy Grey

Stocked USA ■ Smoke Grey

Stocked USA ■ Carbon Black

■ **STOCKED USA**

Product stocked in USA warehouse

1 week preparation + ground shipping

### Manufacturer

AutoStone Floor Systems

### Product Use Category 4.1.3 Interior, Wet Plus (IW+)

Evaluate for interior use in automotive workshop and service drive environments with high speed doors and tech locker rooms. Enviroshop is medium traction surface. For interior applications, with good drainage. Floors walked on when wet should be level, clean, maintained and free of standing water or other contaminants. Should be cleaned with frequent maintenance to keep clean.

### DCOF

Meets and exceeds .50 DCOF rating as required for ANSI A326 4.1.3 (IW+)



## F-8 Alloy Grey

**Series:** DriveSeriesUSA.12x12

**Color:** Alloy Grey

**Finish:** SLR Shop Textured **Size:**

12" x 12" (nominal size)

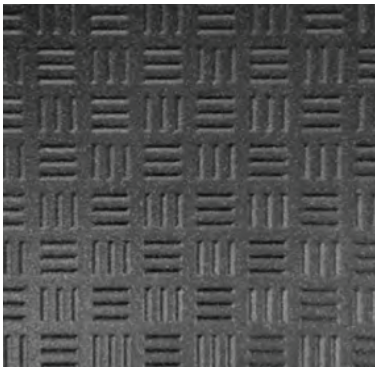


Below: actual color varies, example is only representative



**Grout:** Laticrete Permacolor 89 Smoke Grey

**Thinset:** LHT Plus



## F-8 Genesis-Carbon Black

**Series:** DriveSeriesUSA.1x212

**Color:** Genesis-Carbon Black

**Finish:** SLR Shop Textured

**Size:** 12" x 12" (nominal size)



Below: actual color varies, example is only representative



**Grout:** Laticrete Permacolor Select 45 Raven

**Thinset:** LHT Plus

## Description

A permanent enhanced porcelain technology floor system. Elevated traction provides a better surface to manage STF (slip, trip, and fall) risk in your automotive service drive, workshop and tech locker room shower areas. See declared uses below. Should be cleaned with frequent maintenance to keep clean and free of contamination and debris when dealership is operating. Spot spills should be removed immediately and not left on surface. Floor cleaning should include use of de-greasing chemical, floor scrubber sweeper machine with wet vacuum to suck-up dirty water and debris as part of cleaning process.

## Advantages

1. Advanced surface technology to better manage STF (slip, trip & fall) risk.
2. Surface has repeating lines elevated above the bed of the tile. Designed for greater foot, shoe-sole traction.
3. Will not permanently stain or darken when properly cleaned.

## Manufactured Declared Uses

Evaluate for use in automotive workshop and service drive environments.

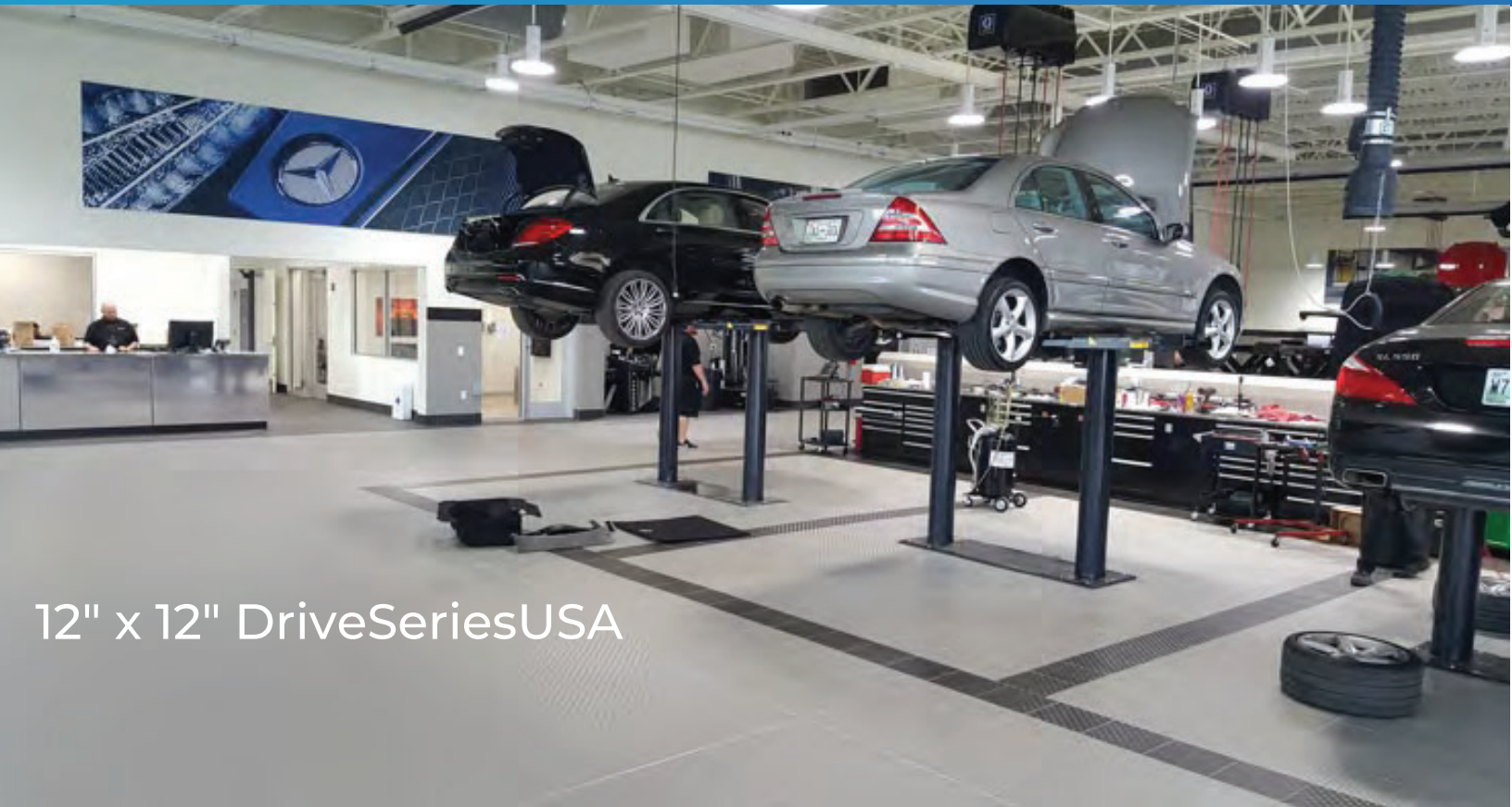
**4.1.4 (Exterior, Wet)** - level outdoor spaces walkways, sidewalks, where such floors may be walked upon when wet (excluding ice or snow) if level, clean, maintained and free of standing water or other contaminants.

**4.1.5 (Oils/Greases)** - level areas regularly exposed to automotive fluids, etc., so long as such floors are level, regularly cleaned, maintained and free of standing water and contaminant build-up. Consult with your architect to determine dealership practices. **Review ANSI A326.3 2021 standard.**

## Declared Product Use & DCOF Requirement

Meets and exceeds .55 DCOF rating as required for ANSI A326.3 4.1.3 Interior Wet Plus (IW+), 4.1.4 Exterior Wet (EW), and 4.1.5 Oils/Grease (O/G).





12" x 12" DriveSeriesUSA



### **Brightfinish Ultra-Cleanable Technology**

Brightfinish is a permanent sealant baked-in during kiln-firing process. The Brightfinish permanent sealant aids dealership with their cleaning practices by sealing surface micropores which trap and hold-on to rubber transfer, grease, oil or other contaminants.

### **Enhanced Impervious Surface Technology**

An impervious tile is the highest performance standard in the porcelain tile industry. The definition of an impervious tile is a surface that absorbs moisture between 0.5% to 0.001%. At AutoStone, we think that 0.5% is too much absorbency, and in an automotive dealership will cause tiles to absorb oil, grease, petroleum, gasoline and other contaminants. When this happens, your tile surface will darken over use and this leads to potential hazards such as STF (slip, trip and fall) events. Petroleum and oils soaked surfaces can pose other hazards when not properly removed with regularly scheduled and proper cleaning practices. With the addition of our brightfinish we enhance our impervious tiles and reduce their absorbency to levels at the lowest end of the spectrum (0.001% or less). This means nothing is absorbed by an AutoStone workshop or service drive floor tile. AutoStone workshop floor systems are premium floor systems which are designed to resist staining and be easier to clean.

### **Limitations**

Surface is a non-vitreous (impervious) enhanced porcelain tile. Oil, grease and all contaminants will remain on surface until properly cleaned and removed.

*Not for use in carwash areas where high volume water and/or high pressure water systems are used.*

# Contact Your AutoStoneUSA Automotive Flooring Experts:

Sales Team	hello@autostoneusa.com 214-393-4875
Barry Wells	barry@autostoneusa.com 214-393-4862
Aaron Standley	aaron@autostoneusa.com 214-393-4868
Gage Thomas	gage@autostoneusa.com 214-393-4861
Link to driveseries	<a href="https://autostoneusa.com/driveseries/">https://autostoneusa.com/driveseries/</a>

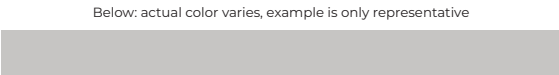
## Installation

See AutoStone recommended 09300 specifications for thinset standards on concrete substrate and AutoStone recommended installation standards.

## Recommended Grout Color & Setting Materials by Laticrete

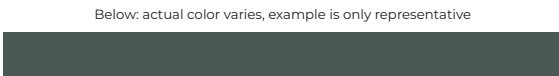
### Alloy Grey

**Grout:** Laticrete Permacolor 89 Smoke Grey  
**Thinset:** LHT Plus



### Carbon Black

**Grout:** Laticrete Permacolor 45 Raven  
**Thinset:** LHT Plus



# enviroshop

smarter, better, workshops

## brightfinish

ultra-cleanable  
technology

Brightfinish is a permanent sealant applied during manufacturing process which seals tile surface to resist staining. Additionally, brightfinish aids cleaning practices so floors can be kept in a "like-new" condition for the life of the dealership with regularly scheduled and proper cleaning practices.

# driveseries!

advanced surface technology

## brightfinish

ultra-cleanable  
technology

Brightfinish is a permanent sealant applied during manufacturing process which seals tile surface to resist staining. Additionally, brightfinish aids cleaning practices so floors can be kept in a "like-new" condition for the life of the dealership with regularly scheduled and proper cleaning practices.

## Product Use Category 4.1.3. Interior, Wet Plus (IW+)

**4.1.3 Interior, Wet Plus (IW+)** Evaluate for interior use in automotive workshop and service drive environments with high speed doors and tech locker rooms. Enviroshop is medium traction surface. For interior applications, with good drainage. Floors walked on when wet if level, clean, maintained and free of standing water or other contaminants. Should be cleaned with frequent maintenance to keep clean.

**DCOF** Meets and exceeds .50 DCOF rating as required for ANSI A326 4.1.3 (IW+)

## Product Use Category 4.1.4 Exterior Wet (EW) & 4.1.5 (O/G)

Evaluate for use in automotive workshop and service drive environments.

**4.1.4 (Exterior, Wet)** - level outdoor spaces walkways, sidewalks, where such floors may be walked upon when wet (excluding ice or snow) if level, clean, maintained and free of standing water or other contaminants.

**4.1.5 (Oils/Greases)** - level areas regularly exposed to automotive fluids, etc., so long as such floors are level, regularly cleaned, maintained and free of standing water and contaminant build-up. Consult with your architect to determine dealership practices. Review ANSI A326.3 2021 standard.

## DCOF

Meets and exceeds .55 DCOF rating as required for ANSI A326.3 4.1.4. Exterior Wet and 4.1.5 Oils / Grease.

## Recommendations

Surface is a non-vitreous (impervious) enhanced porcelain tile. Oil, grease and all contaminants will remain on surface until properly cleaned. Floors should be cleaned with frequent maintenance to keep clean and free of contamination and debris when dealership is operating. To best manage STF (slip, trip, and fall) risk, spills and chemicals should be spot cleaned immediately and not left on surface. Floor cleaning should include use of de-greasing chemical, floor scrubber sweeper machine with wet vacuum to suck-up dirty water and debris as part of cleaning process.

For specific use applications, please consult with your architect or builder, or contact AutoStone USA with questions.



## Warranty

See AutoStoneUSA materials warranty.

## Build with AutoStone

Our program supports Audi dealers with the highest quality, most affordable and comprehensive floor tile system for your dealership project. Affordable, high-quality, and easy to do business with are what you will experience with AutoStone. Call us today to support your project.

## Installation

See AutoStone recommended 09300 specifications for thinset standards on concrete substrate and AutoStone recommended installation standards.

## AutoStoneUSA Support

AutoStone has a team that supports your Audi project. If your call is not answered immediately, you will receive a return call no later than one business day. All emails are monitored and will be responded to quickly. We are here to support your project!

## Audi Brand Info

**Website:** [www.autostoneusa.com/audi](http://www.autostoneusa.com/audi)

**Email:** [audi@autostoneusa.com](mailto:audi@autostoneusa.com)

**Audi Line:** 214-393-4875

## Request For Quote

**Website:** [www.autostoneusa.com/rfq-audi](http://www.autostoneusa.com/rfq-audi)

## Contact Information

**Barry Wells**

[barry@autostoneusa.com](mailto:barry@autostoneusa.com)

**Mobile:** 214-830-1206

**Direct:** 214-393-4862

autostone

