

autostone
floor systems



Kia 2.0 America Tile Guide

2023.9 Edition

Kia Gallery Program
AutoStoneUSA.com/Kia



MADE IN AMERICA

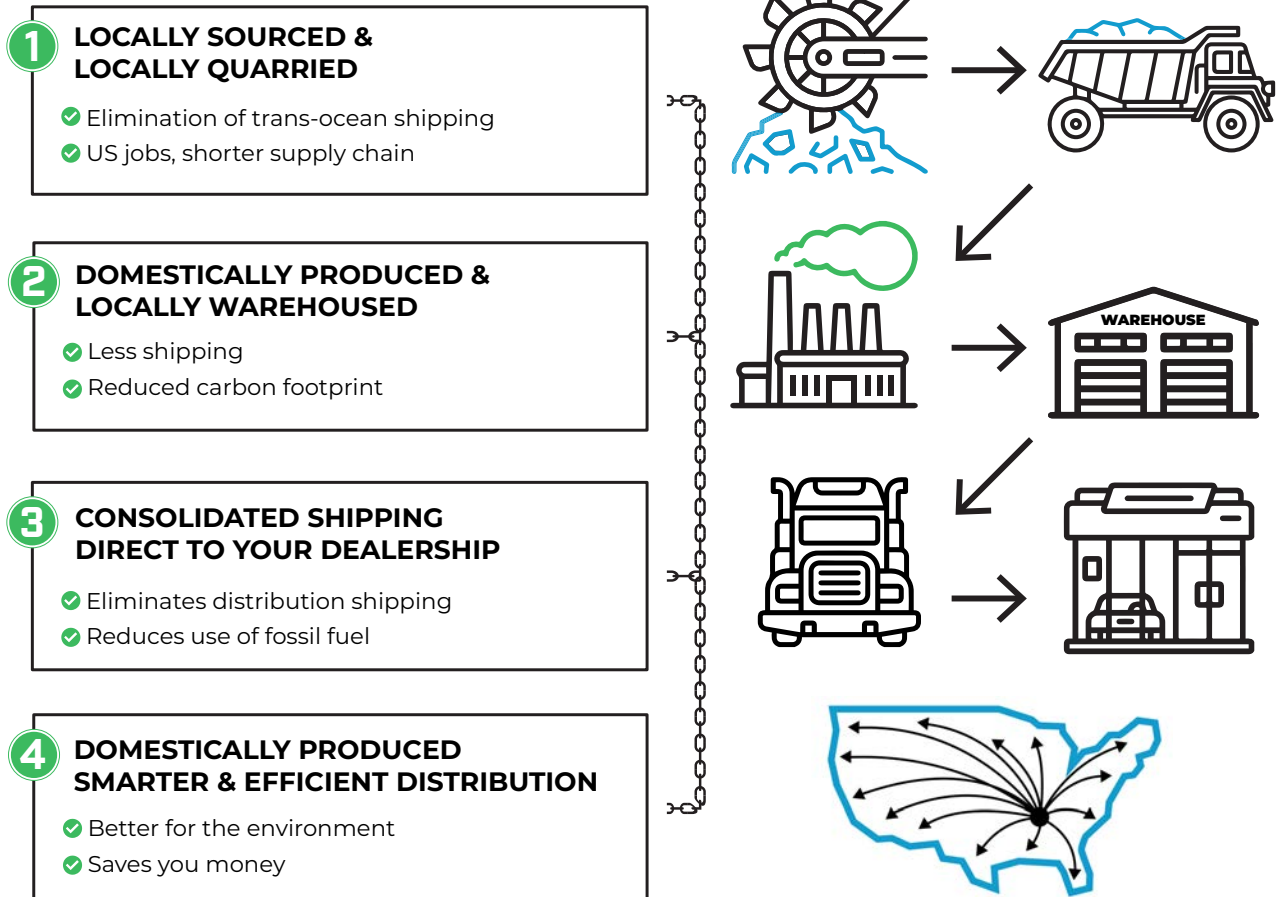
AutoStoneUSA.com

© 2022 AutoStone Floor Systems, All Rights Reserved.



Q2KD

QUARRY TO KILN DISTRIBUTION MODEL





T-1

Series: Concrete
Color: Smoke
Finish: Natural | Honed
Code: AS.11036373232NH
Size: 32" x 32" (U.S. Nominal Dimensions)



AutoStoneUSA Kia 2.0 tiles
 T-1 & T-2 are the same
 thickness (10mm)

Important installation note for tile contractors: AutoStoneUSA, TCNA, NTCA, ANSI, and Kia 2.0 brand standards require tile installers open multiple boxes of tile prior to installing and "shuffle" tiles to assure a randomized tile pattern when installing.



T-2

Series: Amberwood Plank
Color: Maple Harvest
Finish: Natural
Size: 8" x 48" (U.S. Nominal Dimensions)



Other tile option mixes
 different thicknesses of
 materials



T-3

Series: Urban Walls
Color: Pure
Finish: Glossy
Code: AS.1102522.UW.PU.Glossy
Size: 3" x 12" (U.S. Nominal Dimensions)



The MOST
 affordable tile choice!



T-4

Series: Urban Walls
Color: Pearl
Finish: Lineal Chisel **Vertical**
Code: 1103644.312BNMT
Size: 3" x 12" (U.S. Nominal Dimensions)



Easy to work with,
 helpful, & supportive





LVT-1

Series: LV WoodPlank

Color: Maple Beech

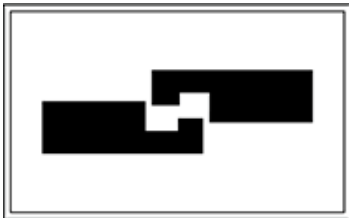
Finish: Natural

Size: 7" x 48" (U.S. Nominal Dimensions)



**USA
STOCKED**

See LVT Tile Guide for more details!



Click Installation



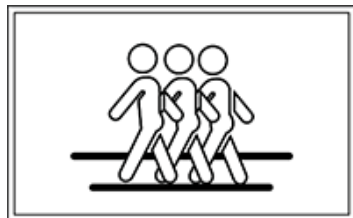
100% Waterproof



Sound Reduction



No Decay or termites



Heavy Foot Traffic Rated

LV WOODPLANK AUTOMOTIVE RETAIL COLLECTION

LVT (luxury vinyl tile) | SPC FLOORING

SIZE: 7" x 48"

THICKNESS: 6.5 MM

WEAR LAYER: 20 MIL | 0.50 MM

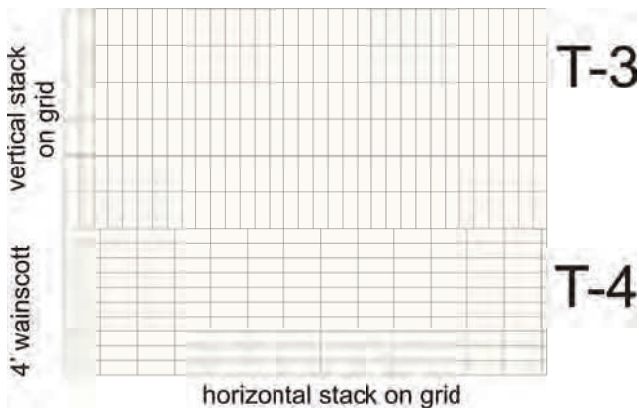
PIECES: 10 PER BOX

COVERAGE: 23.22 SQ FT / BOX | 2.16 M² / BOX

INTERLOCK: UNLIN® CLICK SYSTEM

Vertical Chisel Pattern up-and-down direction

Bathroom Wall Installation Grid



Note to flooring contractor:

- * Kia 2.0 design intent reflects this design:
- * T-3 tile is a GLOSSY finish and to be vertical stack pattern as shown to left. Stack to be done on-grid and installed in stacked pattern as show to left.
- * T-4 tile is a chiseled linear surface and is to be installed with the vertical pattern as shown above and to the left.

Follow architects plans and instructions. If there is a discrepancy with plans, please send an email to:

kia@autostoneusa.com



T-5 Tech Locker Walls

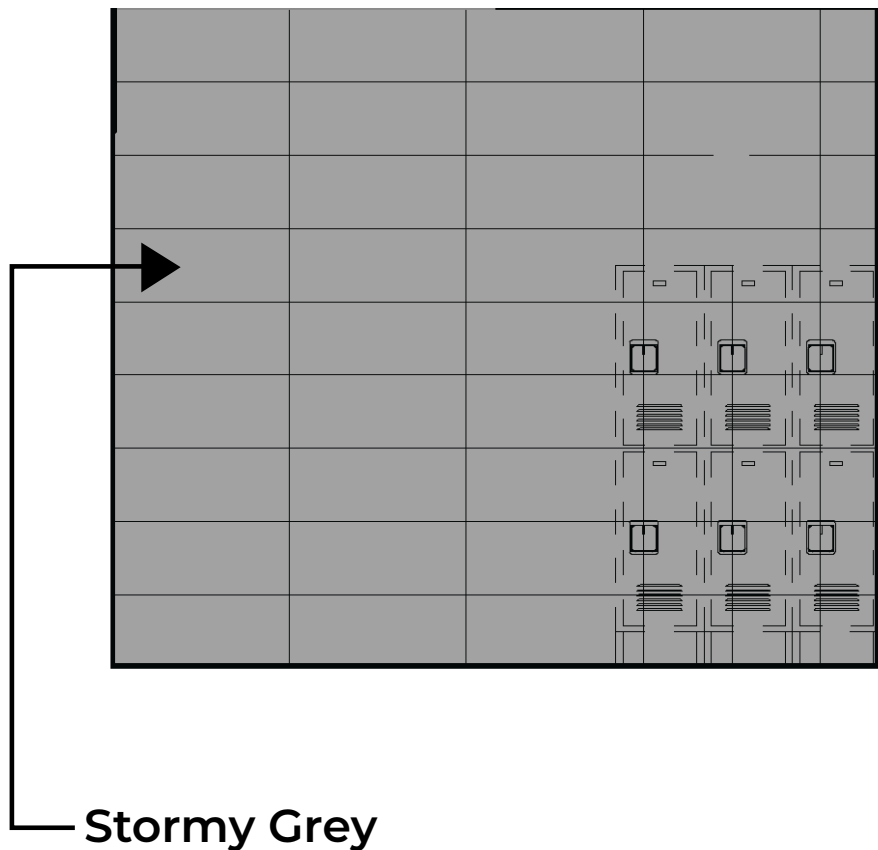
Series: *ShopWalls!*

Color: Stormy Grey

Finish: Glossy

Surface: Medium Traction

Size: 12" x 24" (U.S. Nominal Dimensions)





T-6 Alloy Grey

Series: [Driveseries](#)

Color: Alloy Grey

Finish: Brightfinish | R12 Textured

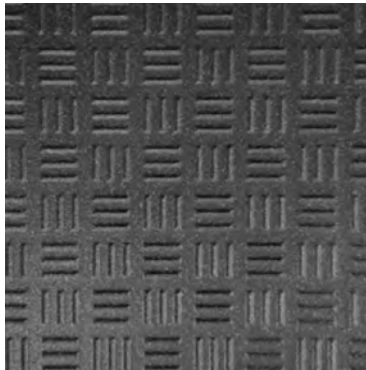
Surface: High Traction

Size: 12" x 12" (U.S. Nominal Dimensions)



Made In The
USA

driveseries! **brightfinish**
advanced surface technology ultra-cleanable technology



T-7 Carbon Black

Series: [Driveseries](#)

Color: Carbon Grey

Finish: Brightfinish | R12 Textured

Surface: High Traction

Size: 12" x 12" (U.S. Nominal Dimensions)



Made In The
USA

driveseries! **brightfinish**
advanced surface technology ultra-cleanable technology

driveseries!
advanced surface technology

Stocked USA ■ Alloy Grey

Stocked USA ■ Smoke Grey

Stocked USA ■ Carbon Black

Manufactured Declared Uses

Evaluate for use in automotive workshop and service drive environments.

4.1.4 (Exterior, Wet) - level outdoor spaces walkways, sidewalks, where such floors may be walked upon when wet (excluding ice or snow) if level, clean, maintained and free of standing water or other contaminants.

4.1.5 (Oils/Greases) - level areas regularly exposed to automotive fluids, etc., so long as such floors are level, regularly cleaned, maintained and free of standing water and contaminant build-up. Consult with your architect to determine dealership practices. **Review ANSI A326.3 1021 standard.**

Declared Product Use & DCOF Requirement

Meets and exceeds .55 DCOF rating as required for ANSI A326.3 4.1.3 Exterior Wet.



T-6 Alloy Grey

Series: [Enviroshop](#)

Color: Alloy Grey

Finish: Brightfinish | Textured

Surface: Medium Traction

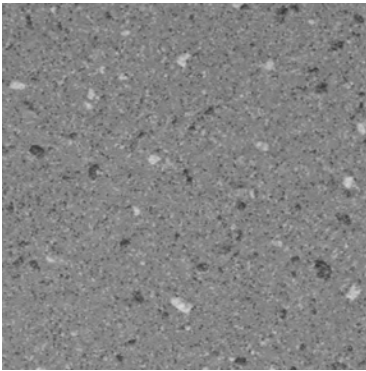
Size: 12" x 12" (U.S. Nominal Dimensions)

Thickness:  9 mm



USA
MANUFACTURED

enviroshop **brightfinish**
smarter, better, workshops ultra-cleanable technology



T-6 Smoke Grey

Series: [Enviroshop](#)

Color: Smoke Grey

Finish: Brightfinish | Textured

Surface: Medium Traction

Size: 12" x 12" (U.S. Nominal Dimensions)

Thickness:  9 mm



USA
MANUFACTURED

enviroshop **brightfinish**
smarter, better, workshops ultra-cleanable technology



T-7 Carbon Black

Series: [Enviroshop](#)

Color: Carbon Black

Finish: Brightfinish | Textured

Surface: Medium Traction

Size: 12" x 12" (U.S. Nominal Dimensions)

Thickness:  9 mm



USA
MANUFACTURED

enviroshop **brightfinish**
smarter, better, workshops ultra-cleanable technology

enviroshop
smarter, better, workshops

Stocked USA  Alloy Grey

Stocked USA  Smoke Grey

Stocked USA  Carbon Black

Manufacturer

AutoStone Floor Systems

Product Use Category 4.1.3 Interior, Wet Plus (IW+)

Evaluate for interior use in automotive workshop and service drive environments with high speed doors and tech locker rooms. Enviroshop is medium traction surface. For interior applications, with good drainage. Floors walked on when wet should be level, clean, maintained and free of standing water or other contaminants. Should be cleaned with frequent maintenance to keep clean.

DCOF

Meets and exceeds .50 DCOF rating as required for ANSI A326 4.1.3 (IW+)

enviroshop

smarter, better, workshops

brightfinish

ultra-cleanable
technology

Brightfinish is a permanent sealant applied during manufacturing process which seals tile surface to resist staining. Additionally, brightfinish aids cleaning practices so floors can be kept in a "like-new" condition for the life of the dealership with regularly scheduled and proper cleaning practices.

driveseries!

advanced surface technology

brightfinish

ultra-cleanable
technology

Brightfinish is a permanent sealant applied during manufacturing process which seals tile surface to resist staining. Additionally, brightfinish aids cleaning practices so floors can be kept in a "like-new" condition for the life of the dealership with regularly scheduled and proper cleaning practices.

Product Use Category 4.1.3. Interior, Wet Plus (IW+)

4.1.3 Interior, Wet Plus (IW+) Evaluate for interior use in automotive workshop and service drive environments with high speed doors and tech locker rooms. Enviroshop is medium traction surface. For interior applications, with good drainage. Floors walked on when wet if level, clean, maintained and free of standing water or other contaminants. Should be cleaned with frequent maintenance to keep clean.

DCOF Meets and exceeds .50 DCOF rating as required for ANSI A326 4.1.3 (IW+)

Product Use Category 4.1.4 Exterior Wet (EW) & 4.1.5 (O/G)

Evaluate for use in automotive workshop and service drive environments.

4.1.4 (Exterior, Wet) - level outdoor spaces walkways, sidewalks, where such floors may be walked upon when wet (excluding ice or snow) if level, clean, maintained and free of standing water or other contaminants.

4.1.5 (Oils/Greases) - level areas regularly exposed to automotive fluids, etc., so long as such floors are level, regularly cleaned, maintained and free of standing water and contaminant build-up. Consult with your architect to determine dealership practices. Review ANSI A326.3 2021 standard.

DCOF

Meets and exceeds .55 DCOF rating as required for ANSI A326.3 4.1.4. Exterior Wet and 4.1.5 Oils / Grease.

Recommendations

Surface is a non-vitreous (impervious) enhanced porcelain tile. Oil, grease and all contaminants will remain on surface until properly cleaned. Floors should be cleaned with frequent maintenance to keep clean and free of contamination and debris when dealership is operating. To best manage STF (slip, trip, and fall) risk, spills and chemicals should be spot cleaned immediately and not left on surface. Floor cleaning should include use of de-greasing chemical, floor scrubber sweeper machine with wet vacuum to suck-up dirty water and debris as part of cleaning process.

For specific use applications, please consult with your architect or builder, or contact AutoStone USA with questions.

Thinset Installation Method (For Floor Tiles)

- Thinset mortar installation minimum. ANSI A118.4 (polymer modified). Recommended 100% coverage for tile.
- Grout to be a high-performance system with stain resistant properties. Installation to be 1/8" to 3/16" width.
- Grout specification minimum: ANSI A118.7.
- See AutoStone supplied setting materials for actual product codes and grout color.

AutoStoneUSA Support

AutoStone has a team that supports your Kia project. If your call is not answered immediately, you will receive a return call no later than one business day. All emails are monitored and will be responded to quickly. We are here to support your project!

Installation

AutoStone offers a tile materials defect warranty. AutoStone offers an installation warranty when warranty services are contracted through AutoStone. Length of Warranty is dependent upon contracted term. AutoStone does not offer any warranty of any kind when a third-party installer is involved except the tile materials defect warranty.

AutoStone has put together a unique package of products with Laticrete to provide contractors a 10 year warranty from Laticrete, when you purchase the correct materials directly through AutoStone. See *Warranties on our website for specifics*.

Installation

See AutoStone recommended 09300 specifications for thinset standards on concrete substrate and AutoStone recommended installation standards.

Kia Brand Page

Website: www.autostoneusa.com/kia
Email: kia@autostoneusa.com

Contact Information

Barry Wells

barry@autostoneusa.com

Direct: 214-393-4862

Mobile: 214-830-1206



autostone