

**autostone**  
floor systems

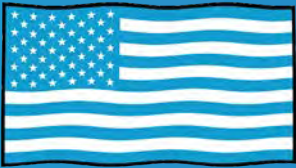


# Hyundai

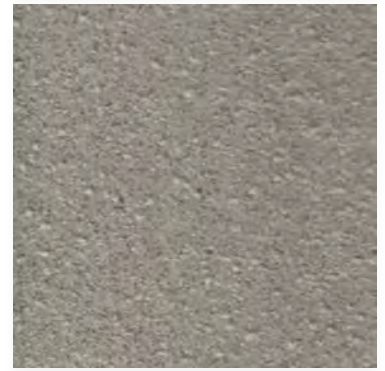
## GDSI 2.0

### Tile Guide

*2023.9 Program Submittal*  
[AutoStoneUSA.com/Hyundai](http://AutoStoneUSA.com/Hyundai)



**MADE IN AMERICA**



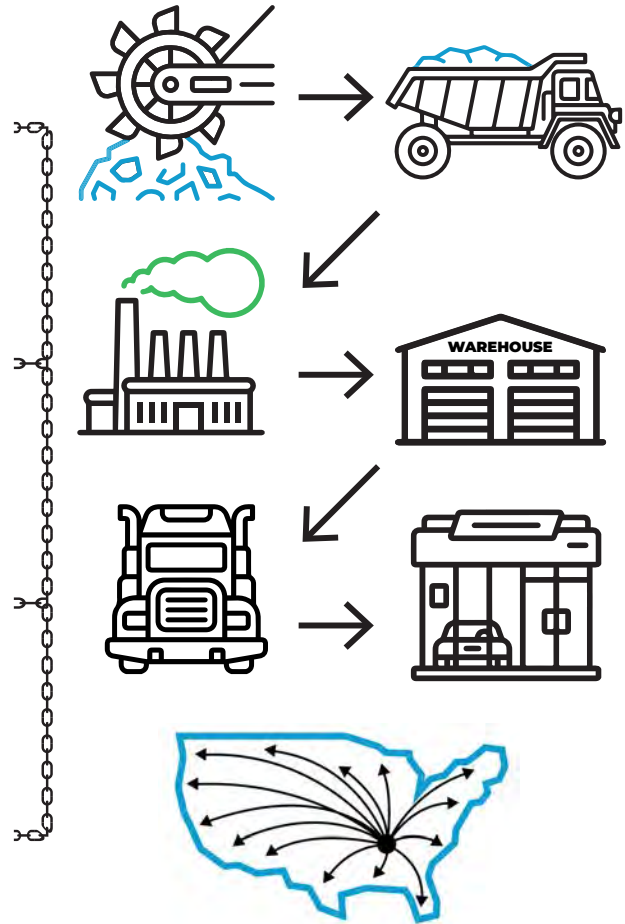
**AutoStoneUSA.com**

© 2023 AutoStone Floor Systems, All Rights Reserved.

# Q2KD

## QUARRY TO KILN DISTRIBUTION MODEL

- 1** **LOCALLY SOURCED & LOCALLY QUARRIED**
  - ✓ Elimination of trans-ocean shipping
  - ✓ US jobs, shorter supply chain
- 2** **DOMESTICALLY PRODUCED & LOCALLY WAREHOUSED**
  - ✓ Less shipping
  - ✓ Reduced carbon footprint
- 3** **CONSOLIDATED SHIPPING DIRECT TO YOUR DEALERSHIP**
  - ✓ Eliminates distribution shipping
  - ✓ Reduces use of fossil fuel
- 4** **DOMESTICALLY PRODUCED SMARTER & EFFICIENT DISTRIBUTION**
  - ✓ Better for the environment
  - ✓ Saves you money





## CT-1 Showroom

**Series:** American Made!  
**Color:** American Harvest.2  
**Finish:** Natural | Honed  
**Size:** 12" x 24" (U.S. Nominal Dimensions)

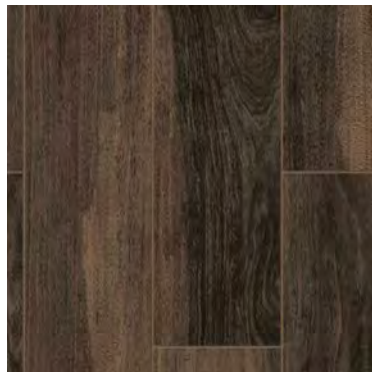


**MADE IN USA**



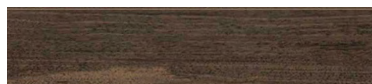
## CTB-1 Base

**Series:** American Made!  
**Color:** American Harvest.2  
**Finish:** Natural | Honed  
**Size:** 03" x 12" (U.S. Nominal Dimensions)



## CT-6 Customer Lounge Tile

**Series:** American Wood  
**Color:** Walnut  
**Finish:** Natural | Honed  
**Code:** AS1103646.0636NH  
**Size:** 06" x 36" (U.S. Nominal Dimensions)



## CTB-2 Base

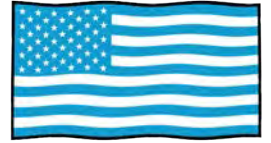
**Series:** American Made!  
**Color:** American Wood  
**Finish:** Natural | Honed  
**Code:** AS1103646.0636NH  
**Size:** 06" x 36" (U.S. Nominal Dimensions)



### CT-7 Enhanced Porcelain

Series: [Enviroshop](#)  
Color: Alloy Grey  
Finish: Brightfinish  
Surface: Medium Traction  
Size: 12" x 12" (U.S. Nominal Dimensions)

**enviroshop** **brightfinish**  
smarter, better, workshops ultra-cleanable technology



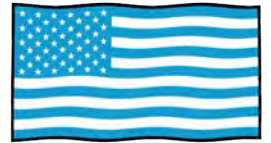
MADE IN USA



### CT-8 Enhanced Porcelain

Series: [Enviroshop](#)  
Color: Carbon Black  
Finish: Brightfinish  
Surface: Medium Traction  
Size: 12" x 12" (U.S. Nominal Dimensions)

**enviroshop** **brightfinish**  
smarter, better, workshops ultra-cleanable technology



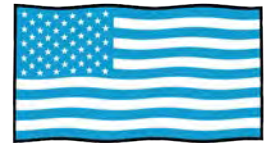
MADE IN USA



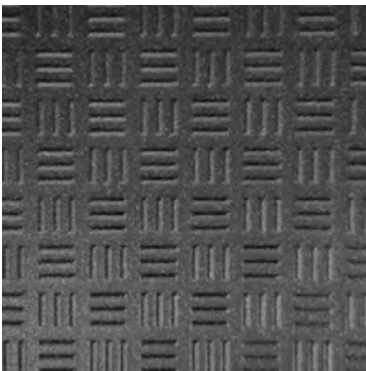
### CT-7 Enhanced Porcelain

Series: [DriveSeriesUSA](#)  
Color: Alloy Grey  
Finish: Brightfinish  
Surface: High Traction  
Size: 12" x 12" (U.S. Nominal Dimensions)

**driveseries!** **brightfinish**  
advanced surface technology ultra-cleanable technology



MADE IN USA



### CT-8 Enhanced Porcelain

Series: [DriveseriesUSA](#)  
Color: Carbon Black  
Finish: Brightfinish  
Surface: High Traction  
Size: 12" x 12" (U.S. Nominal Dimensions)

**driveseries!** **brightfinish**  
advanced surface technology ultra-cleanable technology



MADE IN USA



### CT-7 Alloy Grey

**Series:** eShop2USA  
**Color:** Alloy Grey  
**Finish:** SLR Shop Textured  
**Size:** 8" x 8" (nominal dimension)



Below: actual color varies, example is only representative



**Grout:** Laticrete Permacolor 89 Smoke Grey  
**Thinset:** LHT Plus



### CT-8 Genesis-Carbon Black

**Series:** eShop2USA  
**Color:** Genesis-Carbon Black  
**Finish:** SLR Shop Textured  
**Size:** 8" x 8" (nominal dimension)



Below: actual color varies, example is only representative



**Grout:** Laticrete Permacolor Select 45 Raven  
**Thinset:** LHT Plus



### CT-7 Alloy Grey

**Series:** DriveSeriesUSA  
**Color:** Alloy Grey  
**Finish:** SLR Shop Textured  
**Size:** 8" x 8" (nominal dimension)



Below: actual color varies, example is only representative



**Grout:** Laticrete Permacolor 89 Smoke Grey  
**Thinset:** LHT Plus



### CT-8 Genesis-Carbon Black

**Series:** DriveSeriesUSA  
**Color:** Genesis-Carbon Black  
**Finish:** SLR Shop Textured  
**Size:** 8" x 8" (nominal dimension)



Below: actual color varies, example is only representative



**Grout:** Laticrete Permacolor Select 45 Raven  
**Thinset:** LHT Plus

## enviroshop

smarter, better, workshops

### brightfinish

ultra-cleanable  
technology



Brightfinish is a permanent sealant applied during manufacturing process which seals tile surface to resist staining. Additionally, brightfinish aids cleaning practices so floors can be kept in a "like-new" condition for the life of the dealership with regularly scheduled and proper cleaning practices.

## driveseries!

advanced surface technology

### brightfinish

ultra-cleanable  
technology



Brightfinish is a permanent sealant applied during manufacturing process which seals tile surface to resist staining. Additionally, brightfinish aids cleaning practices so floors can be kept in a "like-new" condition for the life of the dealership with regularly scheduled and proper cleaning practices.

## Product Use Category 4.1.3. Interior, Wet Plus (IW+)

**4.1.3 Interior, Wet Plus (IW+)** Evaluate for interior use in automotive workshop and service drive environments with high speed doors and tech locker rooms. Enviroshop is medium traction surface. For interior applications, with good drainage. Floors walked on when wet if level, clean, maintained and free of standing water or other contaminants. Should be cleaned with frequent maintenance to keep clean.

**DCOF** Meets and exceeds .50 DCOF rating as required for ANSI A326 4.1.3 (IW+)

## Product Use Category 4.1.4 Exterior Wet (EW) & 4.1.5 (O/G)

Evaluate for use in automotive workshop and service drive environments.

**4.1.4 (Exterior, Wet)** - level outdoor spaces walkways, sidewalks, where such floors may be walked upon when wet (excluding ice or snow) if level, clean, maintained and free of standing water or other contaminants.

**4.1.5 (Oils/Greases)** - level areas regularly exposed to automotive fluids, etc., so long as such floors are level, regularly cleaned, maintained and free of standing water and contaminant build-up. Consult with your architect to determine dealership practices. Review ANSI A326.3 2021 standard.

## DCOF

Meets and exceeds .55 DCOF rating as required for ANSI A326.3 4.1.4. Exterior Wet and 4.1.5 Oils / Grease.

## Recommendations

Surface is a non-vitreous (impervious) enhanced porcelain tile. Oil, grease and all contaminants will remain on surface until properly cleaned. Floors should be cleaned with frequent maintenance to keep clean and free of contamination and debris when dealership is operating. To best manage STF (slip, trip, and fall) risk, spills and chemicals should be spot cleaned immediately and not left on surface. Floor cleaning should include use of de-greasing chemical, floor scrubber sweeper machine with wet vacuum to suck-up dirty water and debris as part of cleaning process.

For specific use applications, please consult with your architect or builder, or contact AutoStone USA with questions.

## AutoStoneUSA Support Email

Email: [hyundai@autostoneusa.com](mailto:hyundai@autostoneusa.com)

## Request For Quote

Website: [www.autostoneusa.com/rfq-hyundai](http://www.autostoneusa.com/rfq-hyundai)

## Hyundai Brand Page

Website: [www.autostoneusa.com/rfq-hyundai](http://www.autostoneusa.com/rfq-hyundai)

## Contact Information

Barry Wells

[barry@autostoneusa.com](mailto:barry@autostoneusa.com)

Mobile: 214-830-1206

Direct: 214-393-4862



# autostone