



Mercedes-Benz Technical Data Sheets

2024.1 Edition

Mercedes-Benz Certified Evolution Image Program

(formerly Autohaus3)

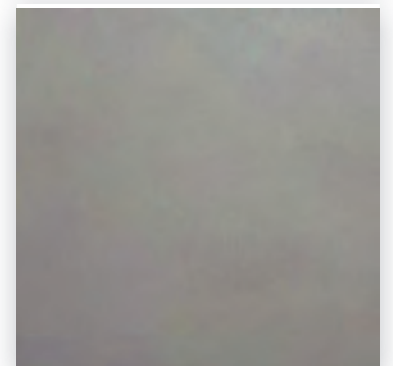
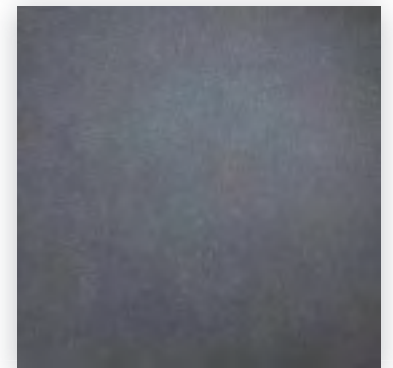
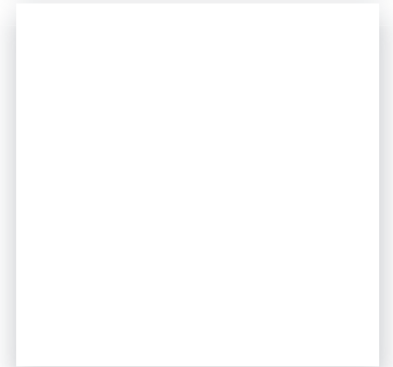
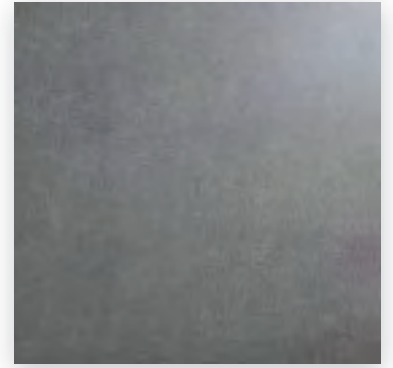
AutoStoneUSA.com/Mercedes-Benz

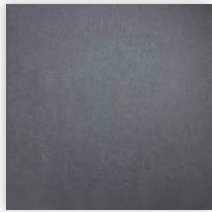


MADE IN USA

AutoStoneUSA.com

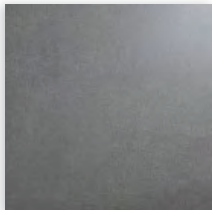
© 2024 AutoStone Floor Systems, All Rights Reserved.





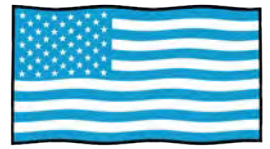
Black Asphalt

Series: AutohausUSA
Color: Black Asphalt
Finish: Textured Asphalt
Size: 24" x 24" (nominal)
Thickness: 8 mm
Edge: Rectified profile (exact dimension)
Product Code:
 AS.MB.AH3.2424.BLKASP.TXA



Deep Grey Asphalt

Series: AutohausUSA
Color: Deep Grey Asphalt
Finish: Textured Asphalt
Size: 24" x 24" (nominal)
Edge: Rectified profile (exact dimension)
Product Code:
 AS.MB.AH3.2424.DGASP.TXA



MADE IN USA

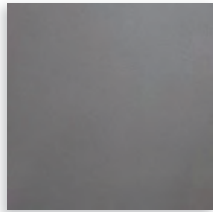
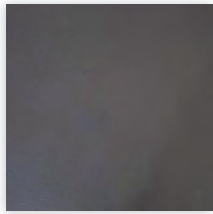
ANSI A326.3 Declared Use:

- 4.1.1 Interior, Dry (ID)
- 4.1.2 Interior Wet (IW)

technical specifications

	SPECS	TEST METHOD	INDUSTRY STANDARD	AUTOSTONEUSA
	WATER ABSORPTION	ASTM C373	≤0.5%	≤0.4%
	CHEMICAL RESISTANCE	ASTM C650	A tile sample is placed in continuous contact with a variety of chemicals for 24 hours. No sample must show visible defects.	NOT AFFECTED
	D.C.O.F. AcuTest®	ANSI A326.3	≥0.42% WET	≥0.42% WET
	STAIN RESISTANCE	ASTM C1378	Surfaces are exposed to staining agents for 24 hours followed by four cleaning procedures. Results are recorded post cleaning.	NOT AFFECTED
	BREAKING STRENGTH	ASTM C648	≥250 lb/ft2	8mm ≥300 lb/ft2 10mm ≥400 lb/ft2
	RESISTANCE TO FREEZE	ASTM C1026	A tile sample is subjected to repeated processes of freezing and thawing. Sample must show no visible defects.	RESISTANT
	WARPAGE EDGE	ASTM C485	Warpage ± 0.4% or ± 0.05 in	≥± 0.4%
	WARPAGE DIAGONAL	ASTM C485	Warpage ± 0.4% or ± 0.07 in	≥± 0.4%
	WARPAGE EDGE	ASTM C485	Warpage ± 0.5% or ± 0.07 in	≥± 0.5%
	WARPAGE DIAGONAL	ASTM C485	Warpage ± 0.5% or ± 0.07 in	≥± 0.5%
	WEDGING	ASTM C502	± 0.25% or ± 0.03 in	≥± 0.25%
	THICKNESS	ASTM C499	Range: ± 0.04 in	≤0.04 in

V2
SLIGHT VARIATION
 Clearly distinguishable differences in texture and/or pattern with similar colors.



Nero

Series: AutobahnUSA - NEW

Color: Nero

Finish: Natural | Textured

Size: 12" x 24", 24" x 24" (nominal)

Thickness: 8 mm

Edge: Rectified profile (exact dimension)

Product Code:

AS.MB.U.S.A.2424.NERO.NAT

City

Series: AutobahnUSA - NEW

Color: City

Finish: Natural | Textured

Size: 12"x24" or 24"x24" (nominal)

Edge: Rectified profile (exact dimension)

Product Code:

AS.MB.U.S.A.2424.CI.NAT















MADE IN USA

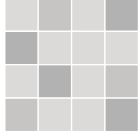
ANSI A326.3 Declared Use:

4.1.1 Interior, Dry (ID)

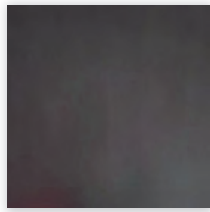
4.1.2 Interior Wet (IW)

technical specifications

	SPECS	TEST METHOD	INDUSTRY STANDARD	AUTOSTONEUSA
	WATER ABSORPTION	ASTM C373	≤0.5%	≤0.4%
	CHEMICAL RESISTANCE	ASTM C650	A tile sample is placed in continuous contact with a variety of chemicals for 24 hours. No sample must show visible defects.	NOT AFFECTED
	D.C.O.F. AcuTest®	ANSI A326.3	≥0.42% WET	≥0.42% WET
	STAIN RESISTANCE	ASTM C1378	Surfaces are exposed to staining agents for 24 hours followed by four cleaning procedures. Results are recorded post cleaning.	NOT AFFECTED
	BREAKING STRENGTH	ASTM C648	≥250 lb/ft2	8mm ≥300 lb/ft2 10mm ≥400 lb/ft2
	RESISTANCE TO FREEZE	ASTM C1026	A tile sample is subjected to repeated processes of freezing and thawing. Sample must show no visible defects.	RESISTANT
	WARPAGE EDGE	ASTM C485	Warpage ± 0.4% or ± 0.05 in	≥± 0.4%
	WARPAGE DIAGONAL	ASTM C485	Warpage ± 0.4% or ± 0.07 in	≥± 0.4%
	WARPAGE EDGE	ASTM C485	Warpage ± 0.5% or ± 0.07 in	≥± 0.5%
	WARPAGE DIAGONAL	ASTM C485	Warpage ± 0.5% or ± 0.07 in	≥± 0.5%
	WEDGING	ASTM C502	± 0.25% or ± 0.03 in	≥± 0.25%
	THICKNESS	ASTM C499	Range: ± 0.04 in	≤0.04 in

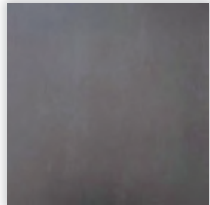


V2
SLIGHT VARIATION
Clearly distinguishable differences in texture and/or pattern with similar colors.



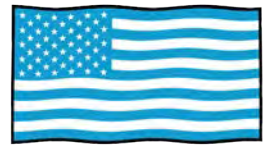
Black Lava

Series: LombardUSA
Color: Black Lava
Finish: R-10 Natural
Size: 12" x 24" or 24" x 24" (nominal)
Thickness: 8 mm
Product Code:
 AS.MB.LUSA.2424.BL.R10.Natural



Slate Grey

Series: LombardUSA
Color: Slate Grey
Finish: R-10 Natural
Size: 12" x 24" or 24" x 24" (nominal)
Product Code:
 AS.MB.LUSA.2424.SG.R10.Natural



MADE IN USA

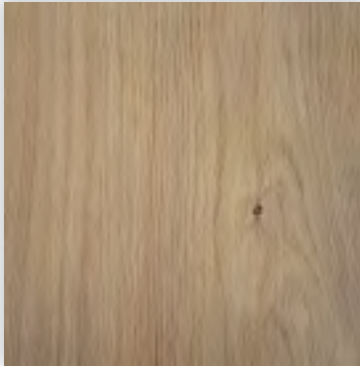
ANSI A326.3 Declared Use:

- 4.1.1 Interior, Dry (ID)
- 4.1.2 Interior Wet (IW)

technical specifications

	SPECS	TEST METHOD	INDUSTRY STANDARD	AUTOSTONEUSA
	WATER ABSORPTION	ASTM C373	≤0.5%	≤0.4%
	CHEMICAL RESISTANCE	ASTM C650	A tile sample is placed in continuous contact with a variety of chemicals for 24 hours. No sample must show visible defects.	NOT AFFECTED
	D.C.O.F. AcuTest®	ANSI A326.3	≥0.42% WET	≥0.42% WET
	STAIN RESISTANCE	ASTM C1378	Surfaces are exposed to staining agents for 24 hours followed by four cleaning procedures. Results are recorded post cleaning.	NOT AFFECTED
	BREAKING STRENGTH	ASTM C648	≥250 lb/ft2	8mm ≥300 lb/ft2 10mm ≥400 lb/ft2
	RESISTANCE TO FREEZE	ASTM C1026	A tile sample is subjected to repeated processes of freezing and thawing. Sample must show no visible defects.	RESISTANT
	WARPAGE EDGE	ASTM C485	Warpage ± 0.4% or ± 0.05 in	≥± 0.4%
	WARPAGE DIAGONAL	ASTM C485	Warpage ± 0.4% or ± 0.07 in	≥± 0.4%
	WARPAGE EDGE	ASTM C485	Warpage ± 0.5% or ± 0.07 in	≥± 0.5%
	WARPAGE DIAGONAL	ASTM C485	Warpage ± 0.5% or ± 0.07 in	≥± 0.5%
	WEDGING	ASTM C502	± 0.25% or ± 0.03 in	≥± 0.25%
	THICKNESS	ASTM C499	Range: ± 0.04 in	≤0.04 in

V2
SLIGHT VARIATION
 Clearly distinguishable differences in texture and/or pattern with similar colors.



WoodPlank Tile

Series: WoodPlankUSA
Color: Maple Harvest
Finish: Natural | Texture
Size: 08" x 48" (nominal)
Thickness: 10 mm

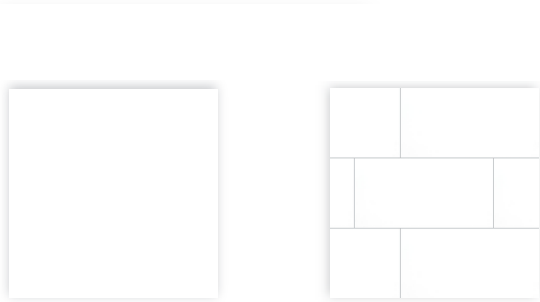


Technical Specifications

This product meets or exceeds all standards described in ANSI A137.1.

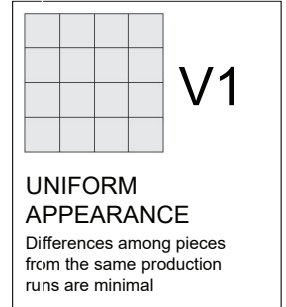
	SPECS	TEST METHOD	INDUSTRY STANDARD	AUTOSTONE VALUES	
	WATER ABSORPTION	ASTM C373	≤0.5%	≤0.4%	
	CERTIFIED PORCELAIN TILE <small>0.5% or less water absorption</small>	ASTM C373	0.5%	Meeting the water absorption criteria of the American national standard PTCA	
	SURFACE WEAR RESISTANCE	ANSI A137.1	Surface Wear-resistance properties of glazed vitreous and porcelain tiles.	ALL RESIDENTIAL / COMMERCIAL	
	CHEMICAL RESISTANCE	ASTM C650	A tile sample is placed in continuous contact with a variety of chemicals for 24 hours. No sample must show visible defects.	NOT AFFECTED	
	D.C.O.F. AcuTest®	ANSI A326.3	≥0.42 WET	≥0.42 WET	
	STAIN RESISTANCE	ASTM C1378	Surfaces are exposed to staining agents for 24 hours followed by four cleaning procedures. Results are recorded post cleaning.	NOT AFFECTED	
	BREAKING STRENGTH	ASTM C648	≥250 lbf	8mm ≥300 lbf 10mm ≥400 lbf	
	RESISTANCE TO FREEZE	ASTM C1026	A tile sample is subjected to repeated processes of freezing and thawing. Sample must show no visible defects.	RESISTANT	
	WARPAGE EDGE	ASTM C485	±0.40% or ±0.05 in (±1.8 mm)	± 0.40%	Rectified
	WARPAGE DIAGONAL	ASTM C485	±0.40% or ±0.07 in (±1.8 mm)	± 0.40%	Rectified
	WEDGING	ASTM C502	±0.25% or ±0.03 in (±0.8 mm)	± 0.25%	Rectified
	WARPAGE EDGE	ASTM C485	±0.50% or ±0.07 in (±1.8 mm)	± 0.50%	Calibrated
	WARPAGE DIAGONAL	ASTM C485	±0.50% or ±0.07 in (±1.8 mm)	± 0.50%	Calibrated
	WEDGING	ASTM C502	±0.50% or ±0.08 in (±2.0 mm)	± 0.50%	Calibrated
	THICKNESS	ASTM C499	Range: ± 0.04 in	≤0.04 in	

• Due to the inherent nature of fired porcelain tile, it is important to note that the coefficient of friction may vary within and between product runs.



Wall Tiles

Series: Premier
Color: Bright White Ice
Finish: Glossy
Size: 3" x 6" or 6" x 6" and 12" x 24"
Product Code (3" x 6"):
 WT-1 (Alternate)
Product Code (6" x 6"):
 WT-3 (Alternate)
Product Code (12" x 24"):
 WT-3 (Alternate)



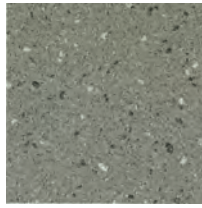
technical specifications

Declared Use: Wall Tile Only - Glazed Surface Wall Tile

TECHNICAL SPECIFICATIONS

This product meets or exceeds all standards described in ANSI A137.1.

	SPECS	TEST METHOD	INDUSTRY STANDARD	AutoStoneUSA Results	
	WATER ABSORPTION	ASTM C373	≤0.5%	≤0.4%	
	CERTIFIED PORCELAIN TILE <small>0.5% or less water absorption</small>	ASTM C373	0.5%	Meeting the water absorption criteria of the American national standard PTCA	
	SURFACE WEAR RESISTANCE	ANSI A137.1	Surface Wear-resistance properties of glazed vitreous and porcelain tiles.	ALL RESIDENTIAL / COMMERCIAL	
	CHEMICAL RESISTANCE	ASTM C650	A tile sample is placed in continuous contact with a variety of chemicals for 24 hours. No sample must show visible defects.	NOT AFFECTED	
	STAIN RESISTANCE	ASTM C1378	Surfaces are exposed to staining agents for 24 hours followed by four cleaning procedures. Results are recorded post cleaning.	NOT AFFECTED	
	BREAKING STRENGTH	ASTM C648	≥250 lbf	8mm ≥300 lbf 10mm ≥400 lbf	
	RESISTANCE TO FREEZE	ASTM C1026	A tile sample is subjected to repeated processes of freezing and thawing. Sample must show no visible defects.	RESISTANT	
	WARPAGE EDGE	ASTM C485	±0.40% or ±0.05 in (±1.8 mm)	± 0.40%	Rectified
	WARPAGE DIAGONAL	ASTM C485	±0.40% or ±0.07 in (±1.8 mm)	± 0.40%	Rectified
	WEDGING	ASTM C502	±0.25% or ±0.03 in (±0.8 mm)	± 0.25%	Rectified
	WARPAGE EDGE	ASTM C485	±0.50% or ±0.07 in (±1.8 mm)	± 0.50%	Calibrated
	WARPAGE DIAGONAL	ASTM C485	±0.50% or ±0.07 in (±1.8 mm)	± 0.50%	Calibrated
	WEDGING	ASTM C502	±0.50% or ±0.08 in (±2.0 mm)	± 0.50%	Calibrated
	THICKNESS	ASTM C499	Range: ± 0.04 in	≤0.04 in	



Alloy Grey
Size: 12" x 12"
Finish: BrightFinish
Surface: Textured
Use: IW+

Smoke Grey
Size: 12" x 12"
Finish: BrightFinish
Surface: Textured
Use: IW+

Carbon Black
Size: 12" x 12"
Finish: BrightFinish
Surface: Textured
Use: IW+

Product Use Category 4.1.2. Interior, Wet Plus (IW+)

4.1.2 (Interior, Wet Plus) Evaluate for interior use in automotive workshop and service drive environments with high speed doors and tech locker rooms. Enviroshop is medium traction surface. For interior applications, with good drainage. Floors walked on when wet if level, clean, maintained and free of standing water or other contaminants. Should be cleaned with frequent maintenance to keep clean.

DCOF Meets and exceeds .50 DCOF rating as required for ANSI A326 4.1.3 (IW+)

Enviroshop tile thickness: 9.4 mm

ANSI 326.3:2017 4.1.2 Interior Wet Plus >.50 DCOF

SURFACES DIMENSION AND QUALITIES	STANDARDS	RESULT "AutoStone Results"
Sides W 300X300 mm Thickness 9.0 mm		
Sides W 200X200 mm Thickness 9.1 mm	UNI EN ISO 10545-2	+/- 0,1% +/- 1,5%
Surface qualities: percentage of acceptable tiles per lot	UNI EN ISO 10545-2	> 95%
Straightness of sides	UNI EN ISO 10545-2	+/- 0,0%
Rectangularity	UNI EN ISO 10545-2	+/- 0,1%
Surface flatness: centre curvature	UNI EN ISO 10545-2	+/- 0,2%
Surface flatness: edge curvature	UNI EN ISO 10545-2	+/- 0,1%
Surface flatness: warpage	UNI EN ISO 10545-2	+/- 0,2%
PHYSICAL PROPERTIES		
Water mass absorbed in %	UNI EN ISO 10545-3	0,03
Average breaking load (N)	UNI EN ISO 10545-4	2500
Average modulus of rupture (N/mm ²)	UNI EN ISO 10545-4	51
Average breaking strength (N)	UNI EN ISO 10545-4	2458
Abrasion volume (mm ³)	UNI EN ISO 10545-6	152
Thermal expansion coefficient	UNI EN ISO 10545-8	6.2 MK ¹
Thermal shock resistance	UNI EN ISO 10545-9	resistant
Frost resistance	UNI EN ISO 10545-12	resistant
Resistance of the colors in the light	DIN 51094	resistant
CHEMICAL PROPERTIES		
Resistance to chemical products	UNI EN ISO 10545-13	resistant
Stain resistance	UNI EN ISO 10545-14	Class 5

Please note that no tile is slip proof. There are many things that you should address when you select products for your service drive and vehicle drop-off areas, or any and all areas of your dealership. STF (slip, trip, and fall) risk occur anywhere and everywhere. There are many things that impact your dealership which can either help or hinder your ability to manage this risk. These are things that include: facility design, protection from the weather, proper drainage, dealership cleaning practices, dealership management practices, access doors, floor slope and the number of customers you service daily. These are just a few of the many things that must be considered and factored in when you select the product you use for your service lane and shop areas. Your architect is your primary resource for assuring that the floors specified for all areas of your dealership are the correct product and application. They have access to most of the necessary items to provide you the best or better tool to help manage the risk associated with slip and fall accidents. There are no guarantees that eliminate this risk. There are only better practices and products that help you better manage these risks.

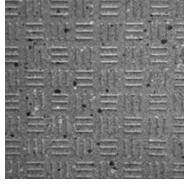


Product Use Category 4.1.4 Exterior Wet (EW) & 4.1.5 (O/G)

Evaluate for use in automotive workshop and service drive environments.

4.1.4 (Exterior, Wet) - level outdoor spaces walkways, sidewalks, where such floors may be walked upon when wet (excluding ice or snow) if level, clean, maintained and free of standing water or other contaminants.

4.1.5 (Oils/Greases) - level areas regularly exposed to automotive fluids, etc., so long as such floors are level, regularly cleaned, maintained and free of standing water and contaminant build-up. Consult with your architect to determine dealership practices. Review ANSI A326.3 2021 standard. **DCOF** - Meets and exceeds .55 DCOF rating as required for ANSI A326.3 4.1.4. Exterior Wet and 4.1.5 Oils / Grease.



Alloy Grey

Smoke Grey

Carbon Black

Size: 08" x 08"

Size: 08" x 08"

Size: 08" x 08"

Finish: BrightFinish

Finish: BrightFinish

Finish: BrightFinish

Surface: High Traction

Surface: High Traction

Surface: High Traction

Use: EW & O/G

Use: EW & O/G

Use: EW & O/G

SURFACES DIMENSION AND QUALITIES	ANSI A326.3 2022 STANDARDS	> .55 DCOF RESULT "AutoStone Results"
Sides W 20X20 cm	UNI EN ISO 10545-2	+/- 0,1% +/- 1,5%
Surface qualities: percentage of acceptable tiles per lot	UNI EN ISO 10545-2	> 95%
Straightness of sides	UNI EN ISO 10545-2	+/- 0,0%
Rectangularity	UNI EN ISO 10545-2	+/- 0,1%
Surface flatness: centre curvature	UNI EN ISO 10545-2	+/- 0,2%
Surface flatness: edge curvature	UNI EN ISO 10545-2	+/- 0,1%
Surface flatness: warpage	UNI EN ISO 10545-2	+/- 0,2%
PHYSICAL PROPERTIES		
Water mass absorbed in %	UNI EN ISO 10545-3	0,03
Average breaking load (N)	UNI EN ISO 10545-4	2500
Average <u>moduls</u> of rupture (N/mm2)	UNI EN ISO 10545-4	51
Average breaking strength (N)	UNI EN ISO 10545-4	2458
Abrasion volume (mm3)	UNI EN ISO 10545-6	152
Thermal expansion coefficient	UNI EN ISO 10545-8	6.2 MK ¹
Thermal shock resistance	UNI EN ISO 10545-9	resistant
Frost resistance	UNI EN ISO 10545-12	resistant
Resistance of the colors in the light	DIN 51094	resistant
CHEMICAL PROPERTIES		
Resistance to chemical products	UNI EN ISO 10545-13	resistant
Stain resistance	UNI EN ISO 10545-14	Class 5

Note: made in European Union.

Please note that no tile is slip proof. There are many things that you should address when you select products for your service drive and vehicle drop-off areas, or any and all areas of your dealership. STF (slip, trip, and fall) risk occur anywhere and everywhere. There are many things that impact your dealership which can either help or hinder your ability to manage this risk. These are things that include: facility design, protection from the weather, proper drainage, dealership cleaning practices, dealership management practices, access doors, floor slope and the number of customers you service daily. These are just a few of the many things that must be considered and factored in when you select the product you use for your service lane and shop areas. Your architect is your primary resource for assuring that the floors specified for all areas of your dealership are the correct product and application. They have access to most of the necessary items to provide you the best or better tool to help manage the risk associated with slip and fall accidents. There are no guarantees that eliminate this risk. There are only better practices and products that help you better manage these risks.

enviroshop

smarter, better, workshops

brightfinish

ultra cleanable technology

Brightfinish is a permanent sealant applied during manufacturing process which seals tile surface to resist staining. Additionally, brightfinish aids cleaning practices so floors can be kept in a "like-new" condition for the life of the dealership with regularly scheduled and proper cleaning practices.

Product Use Category 4.1.3. Interior, Wet Plus (IW+)

4.1.3 (Interior, Wet Plus) - Evaluate for interior use in automotive workshop and service drive environments with high speed doors and tech locker rooms. Enviroshop is medium traction surface. For interior applications, with good drainage. Floors walked on when wet if level, clean, maintained and free of standing water or other contaminants. Should be cleaned with frequent maintenance to keep clean.

DCOF

Meets and exceeds .50 DCOF rating as required for ANSI A326 4.1.3 (IW+)

driveseries!

advanced surface technology

brightfinish

ultra cleanable technology

Brightfinish is a permanent sealant applied during manufacturing process which seals tile surface to resist staining. Additionally, brightfinish aids cleaning practices so floors can be kept in a "like-new" condition for the life of the dealership with regularly scheduled and proper cleaning practices.

Product Use Category 4.1.4 Exterior Wet (EW) & 4.1.5 (O/G)

Evaluate for use in automotive workshop and service drive environments.

4.1.4 (Exterior, Wet) - level outdoor spaces walkways, sidewalks, where such floors may be walked upon when wet (excluding ice or snow) if level, clean, maintained and free of standing water or other contaminants.

4.1.5 (Oils/Greases) - level areas regularly exposed to automotive fluids, etc., so long as such floors are level, regularly cleaned, maintained and free of standing water and contaminant build-up. Consult with your architect to determine dealership practices. Review ANSI A326.3 2021 standard.

DCOF

Meets and exceeds .55 DCOF rating as required for ANSI A326.3 4.1.4. Exterior Wet and 4.1.5 Oils/ Grease.

Recommendations

Surface is a non-vitreous (impervious) enhanced porcelain tile. Oil, grease and all contaminants will remain on surface until properly cleaned. Floors should be cleaned with frequent maintenance to keep clean and free of contamination and debris when dealership is operating. To best manage STF (slip, trip, and fall) risk, spills and chemicals should be spot cleaned immediately and not left on surface. Floor cleaning should include use of de-greasing chemical, floor scrubber sweeper machine with wet vacuum to suck-up dirty water and debris as part of cleaning process.

For specific use applications, please consult with your architect or builder, or contact AutoStone USA with questions.