

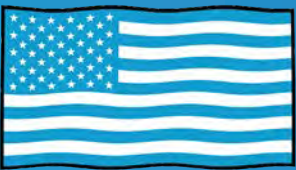
autostone
floor systems



Hyundai
GDSI 2.0
Tile Guide

2023 Program Submittal

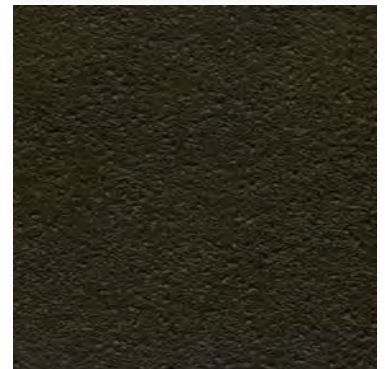
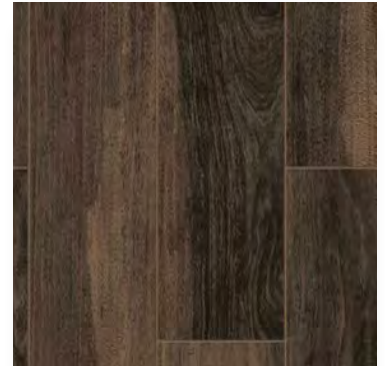
AutoStoneUSA.com/Hyundai



MADE IN AMERICA

AutoStoneUSA.com

© 2023 AutoStone Floor Systems, All Rights Reserved.



Q2KD

QUARRY TO KILN DISTRIBUTION MODEL

1 **LOCALLY SOURCED & LOCALLY QUARRIED**

- ✓ Elimination of trans-ocean shipping
- ✓ US jobs, shorter supply chain

2 **DOMESTICALLY PRODUCED & LOCALLY WAREHOUSED**

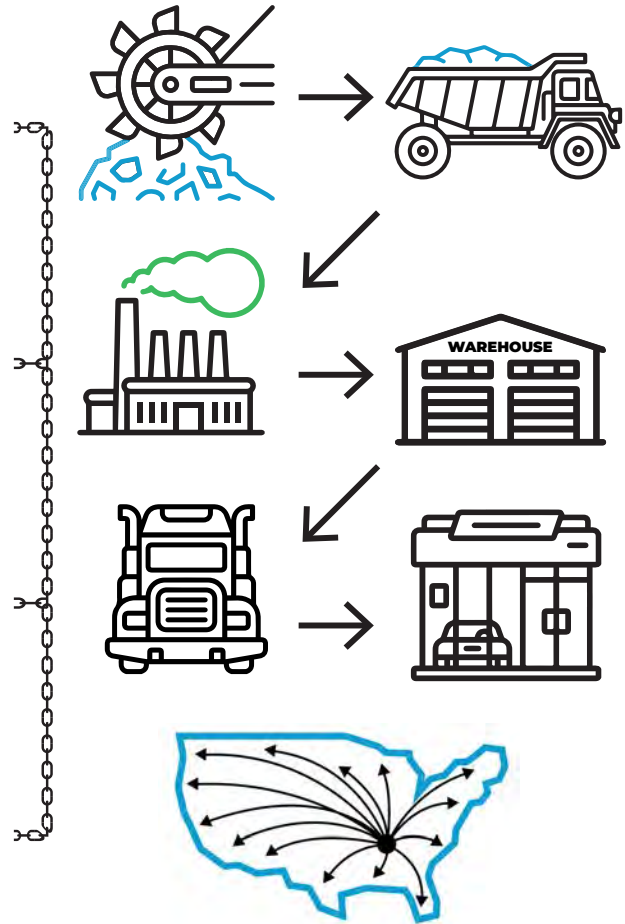
- ✓ Less shipping
- ✓ Reduced carbon footprint

3 **CONSOLIDATED SHIPPING DIRECT TO YOUR DEALERSHIP**

- ✓ Eliminates distribution shipping
- ✓ Reduces use of fossil fuel

4 **DOMESTICALLY PRODUCED SMARTER & EFFICIENT DISTRIBUTION**

- ✓ Better for the environment
- ✓ Saves you money



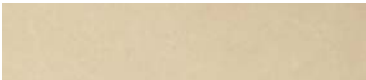
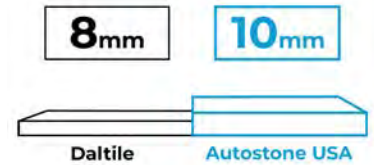


CT-1 Showroom

Series: American Made!
Color: American Harvest
Finish: Natural | Honed
Code: AS1103643.1225.NH
Size: 12" x 24" (U.S. Nominal Dimensions)

Thickness: 

25% THICKER



CTB-1 Base

Series: American Made!
Color: American Harvest
Finish: Natural | Honed
Code: AS1103645.0312NH
Size: 03" x 12" (U.S. Nominal Dimensions)



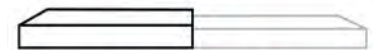
AutoStone CT-1, CT-2, CT-6 are all the same thickness (10mm)



CT-2 Lead Car Zone Display Pad

Series: American Made!
Color: American Harvest
Finish: Natural | Honed
Code: AS1103640.2424NH
Size: 24" x 24" (U.S. Nominal Dimensions)

Thickness: 



Daltille materials mix different thickness of materials.



CT-6 Customer Lounge Tile

Series: American Wood
Color: Walnut
Finish: Natural | Honed
Code: AS1103646.0636NH
Size: 06" x 36" (U.S. Nominal Dimensions)

Thickness: 



AutoStone Hyundai tiles (CT-1, CT-2, CT-6, CT-7, & CT-8) are USA manufactured



CTB-2 Base

Series: American Made!
Color: American Wood
Finish: Natural | Honed
Code: AS1103646.0636NH
Size: 06" x 36" (U.S. Nominal Dimensions)

Thickness: 



CT-3 Glass Mosaic

Series: Linear Glass Mosaic

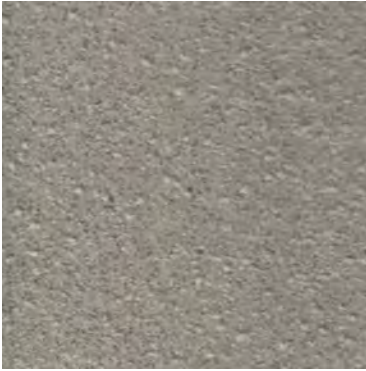
Color: Air, Land, & Sea

Finish: Glass

Code: AS.LGM.ALS.1218

Size: 12" x 18" (U.S. Nominal Dimensions)

Thickness:  8 mm



CT-7 Enhanced Porcelain


Series: [Enviroshop](#)

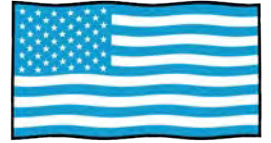
Color: Alloy Grey

Finish: Brightfinish

Surface: Medium Traction

Size: 12" x 12" (U.S. Nominal Dimensions)

Thickness:  9mm



MADE IN USA

enviroshop **brightfinish**
smarter, better, workshops ultra-cleanable technology



CT-8 Enhanced Porcelain

Series: [Enviroshop](#)

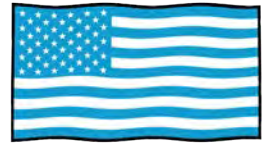
Color: Carbon Black

Finish: Brightfinish

Surface: Medium Traction

Size: 12" x 12" (U.S. Nominal Dimensions)

Thickness:  9mm



MADE IN USA

enviroshop **brightfinish**
smarter, better, workshops ultra-cleanable technology



CT-7 Enhanced Porcelain

Series: [Driveseries](#)

Color: Alloy Grey

Finish: Brightfinish

Surface: High Traction

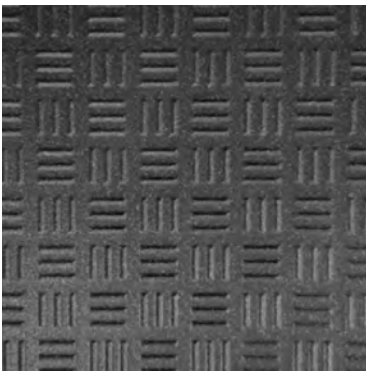
Size: 8" x 8" (U.S. Nominal Dimensions)

Thickness:  9.1mm



STOCKED IN USA

driveseries! **brightfinish**
advanced surface technology ultra-cleanable technology



CT-8 Enhanced Porcelain

Series: [Driveseries](#)

Color: Carbon Black

Finish: Brightfinish

Surface: High Traction

Size: 8" x 8" (U.S. Nominal Dimensions)

Thickness:  9.1mm



STOCKED IN USA

driveseries! **brightfinish**
advanced surface technology ultra-cleanable technology

enviroshop

smarter, better, workshops

brightfinish

ultra-cleanable
technology



Brightfinish is a permanent sealant applied during manufacturing process which seals tile surface to resist staining. Additionally, brightfinish aids cleaning practices so floors can be kept in a "like-new" condition for the life of the dealership with regularly scheduled and proper cleaning practices.

driveseries!

advanced surface technology

brightfinish

ultra-cleanable
technology



Brightfinish is a permanent sealant applied during manufacturing process which seals tile surface to resist staining. Additionally, brightfinish aids cleaning practices so floors can be kept in a "like-new" condition for the life of the dealership with regularly scheduled and proper cleaning practices.

Product Use Category 4.1.3. Interior, Wet Plus (IW+)

4.1.3 Interior, Wet Plus (IW+) Evaluate for interior use in automotive workshop and service drive environments with high speed doors and tech locker rooms. Enviroshop is medium traction surface. For interior applications, with good drainage. Floors walked on when wet if level, clean, maintained and free of standing water or other contaminants. Should be cleaned with frequent maintenance to keep clean.

DCOF Meets and exceeds .50 DCOF rating as required for ANSI A326 4.1.3 (IW+)

Product Use Category 4.1.4 Exterior Wet (EW) & 4.1.5 (O/G)

Evaluate for use in automotive workshop and service drive environments.

4.1.4 (Exterior, Wet) - level outdoor spaces walkways, sidewalks, where such floors may be walked upon when wet (excluding ice or snow) if level, clean, maintained and free of standing water or other contaminants.

4.1.5 (Oils/Greases) - level areas regularly exposed to automotive fluids, etc., so long as such floors are level, regularly cleaned, maintained and free of standing water and contaminant build-up. Consult with your architect to determine dealership practices. Review ANSI A326.3 2021 standard.

DCOF

Meets and exceeds .55 DCOF rating as required for ANSI A326.3 4.1.4. Exterior Wet and 4.1.5 Oils / Grease.

Recommendations

Surface is a non-vitreous (impervious) enhanced porcelain tile. Oil, grease and all contaminants will remain on surface until properly cleaned. Floors should be cleaned with frequent maintenance to keep clean and free of contamination and debris when dealership is operating. To best manage STF (slip, trip, and fall) risk, spills and chemicals should be spot cleaned immediately and not left on surface. Floor cleaning should include use of de-greasing chemical, floor scrubber sweeper machine with wet vacuum to suck-up dirty water and debris as part of cleaning process.

For specific use applications, please consult with your architect or builder, or contact AutoStone USA with questions.

AutoStoneUSA Support Email

Email: hyundai@autostoneusa.com

Request For Quote

Website: www.autostoneusa.com/rfq-hyundai

Hyundai Brand Page

Website: www.autostoneusa.com/rfq-hyundai

Contact Information

Barry Wells

barry@autostoneusa.com

Mobile: 214-830-1206

Direct: 214-393-4862

autostone