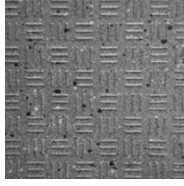


driveseries!

advanced surface technology

brightfinish
ultra cleanable
technology



Alloy Grey

Smoke Grey

Carbon Black

Size: 08" x 08"

Size: 08" x 08"

Size: 08" x 08"

Finish: BrightFinish

Finish: BrightFinish

Finish: BrightFinish

Surface: High Traction

Surface: High Traction

Surface: High Traction

Use: EW & O/G

Use: EW & O/G

Use: EW & O/G

Product Use Category 4.1.4 Exterior Wet (EW) & 4.1.5 (O/G)

Evaluate for use in automotive workshop and service drive environments.

4.1.4 (Exterior, Wet) - level outdoor spaces walkways, sidewalks, where such floors may be walked upon when wet (excluding ice or snow) if level, clean, maintained and free of standing water or other contaminants.

4.1.5 (Oils/Greases) - level areas regularly exposed to automotive fluids, etc., so long as such floors are level, regularly cleaned, maintained and free of standing water and contaminant build-up. Consult with your architect to determine dealership practices. Review ANSI A326.3 2021 standard. **DCOF** - Meets and exceeds .55 DCOF rating as required for ANSI A326.3 4.1.4. Exterior Wet and 4.1.5 Oils / Grease.

SURFACES DIMENSION AND QUALITIES	ANSI A326.3 2022 STANDARDS	> .55 DCOF RESULT "AutoStone Results"
Sides W 20X20 cm	UNI EN ISO 10545-2	+/- 0,1% +/- 1,5%
Surface qualities: percentage of acceptable tiles per lot	UNI EN ISO 10545-2	> 95%
Straightness of sides	UNI EN ISO 10545-2	+/- 0,0%
Rectangularity	UNI EN ISO 10545-2	+/- 0,1%
Surface flatness: centre curvature	UNI EN ISO 10545-2	+/- 0,2%
Surface flatness: edge curvature	UNI EN ISO 10545-2	+/- 0,1%
Surface flatness: warpage	UNI EN ISO 10545-2	+/- 0,2%
PHYSICAL PROPERTIES		
Water mass absorbed in %	UNI EN ISO 10545-3	0,03
Average breaking load (N)	UNI EN ISO 10545-4	2500
Average <u>moduls</u> of rupture (N/mm2)	UNI EN ISO 10545-4	51
Average breaking strength (N)	UNI EN ISO 10545-4	2458
Abrasion volume (mm3)	UNI EN ISO 10545-6	152
Thermal expansion coefficient	UNI EN ISO 10545-8	6.2 MK ¹
Thermal shock resistance	UNI EN ISO 10545-9	resistant
Frost resistance	UNI EN ISO 10545-12	resistant
Resistance of the colors in the light	DIN 51094	resistant
CHEMICAL PROPERTIES		
Resistance to chemical products	UNI EN ISO 10545-13	resistant
Stain resistance	UNI EN ISO 10545-14	Class 5

Note: made in European Union.

Please note that no tile is slip proof. There are many things that you should address when you select products for your service drive and vehicle drop-off areas, or any and all areas of your dealership. STF (slip, trip, and fall) risk occur anywhere and everywhere. There are many things that impact your dealership which can either help or hinder your ability to manage this risk. These are things that include: facility design, protection from the weather, proper drainage, dealership cleaning practices, dealership management practices, access doors, floor slope and the number of customers you service daily. These are just a few of the many things that must be considered and factored in when you select the product you use for your service lane and shop areas. Your architect is your primary resource for assuring that the floors specified for all areas of your dealership are the correct product and application. They have access to most of the necessary items to provide you the best or better tool to help manage the risk associated with slip and fall accidents. There are no guarantees that eliminate this risk. There are only better practices and products that help you better manage these risks.