

DriveSeries12USA

advanced surface technology



Alloy Grey

Size: 12" x 12"

Finish: Traction.Brightfinish Surface:

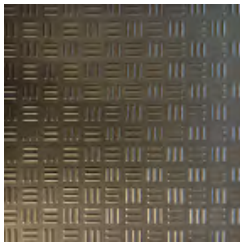
ANSI A326.3 4.1.3 Interior Wet Plus

(IW+).

ANSI A326.3 4.1.4

Exterior Wet (EX)

ANSI A326.3 4.1.5 Oils/Grease (O/G)



Carbon Black

Size: 12" x 12"

Finish: Traction.Brightfinish Surface:

ANSI A326.3 4.1.3 Interior Wet Plus

(IW+).

ANSI A326.3 4.1.4

Exterior Wet (EX)

ANSI A326.3 4.1.5 Oils/Grease (O/G)

Product Use Category 4.1.4 Exterior Wet (EW) & 4.1.5 (O/G)

Evaluate for use in automotive workshop and service drive environments.

4.1.4 (Exterior, Wet) - level outdoor spaces walkways, sidewalks, where such floors may be walked upon when wet (excluding ice or snow) if level, clean, maintained and free of standing water or other contaminants.

4.1.5 (Oils/Greases) - level areas regularly exposed to automotive fluids, etc., so long as such floors are level, regularly cleaned, maintained and free of standing water and contaminant build-up. Consult with your architect to determine dealership practices. Review ANSI A326.3 2021 standard. **DCOF** - Meets and exceeds .55 DCOF rating as required for ANSI A326.3 4.1.4.

Exterior Wet and 4.1.5 Oils / Grease.

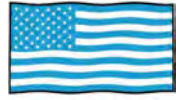
SURFACES DIMENSION AND QUALITIES	ANSI A326.3 2022 STANDARDS	> .55 DCOF RESULT "AutoStone Results"
Sides W 297 x 297 cm	UNI EN ISO 10545-2	+/- 0,1% +/- 1,5%
Surface qualities: percentage of acceptable tiles per lot	UNI EN ISO 10545-2	> 95%
Straightness of sides	UNI EN ISO 10545-2	+/- 0,0%
Rectangularity	UNI EN ISO 10545-2	+/- 0,1%
Surface flatness: centre curvature	UNI EN ISO 10545-2	+/- 0,2%
Surface flatness: edge curvature	UNI EN ISO 10545-2	+/- 0,1%
Surface flatness: warpage	UNI EN ISO 10545-2	+/- 0,2%
PHYSICAL PROPERTIES		
Water mass absorbed in %	UNI EN ISO 10545-3	0,03
Average breaking load (N)	UNI EN ISO 10545-4	2500
Average <u>moduls</u> of rupture (N/mm2)	UNI EN ISO 10545-4	51
Average breaking strength (N)	UNI EN ISO 10545-4	2458
Abrasion volume (mm3)	UNI EN ISO 10545-6	152
Thermal expansion coefficient	UNI EN ISO 10545-8	6.2 MK ¹
Thermal shock resistance	UNI EN ISO 10545-9	resistant
Frost resistance	UNI EN ISO 10545-12	resistant
Resistance of the colors in the light	DIN 51094	resistant
CHEMICAL PROPERTIES		
Resistance to chemical products	UNI EN ISO 10545-13	resistant
Stain resistance	UNI EN ISO 10545-14	Class 5

Note: made in the USA!

Please note that no tile is slip proof. There are many things that you should address when you select products for your service drive and vehicle drop-off areas, or any and all areas of your dealership. STF (slip, trip, and fall) risk occur anywhere and everywhere. There are many things that impact your dealership which can either help or hinder your ability to manage this risk. These are things that include: facility design, protection from the weather, proper drainage, dealership cleaning practices, dealership management practices, access doors, floor slope and the number of customers you service daily. These are just a few of the many things that must be considered and factored in when you select the product you use for your service lane and shop areas. Your architect is your primary resource for assuring that the floors specified for all areas of your dealership are the correct product and application. They have access to most of the necessary items to provide you the best or better tool to help manage the risk associated with slip and fall accidents. There are no guarantees that eliminate this risk. There are only better practices and products that help you better manage these risks.

DriveSeries12USA

advanced surface technology



MADE IN USA



Alloy Grey

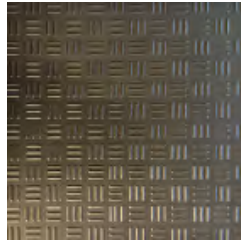
Size: 12" x 12"

Finish: Traction.Brightfinish Surface:
ANSI A326.3 4.1.3 Interior Wet Plus
(IW+).

ANSI A326.3 4.1.4

Exterior Wet (EX)

ANSI A326.3 4.1.5 Oils/Grease (O/G)



Carbon Black

Size: 12" x 12"

Finish: Traction.Brightfinish Surface:
ANSI A326.3 4.1.3 Interior Wet Plus
(IW+).

ANSI A326.3 4.1.4

Exterior Wet (EX)

ANSI A326.3 4.1.5 Oils/Grease (O/G)

NEW SIZING (2024): 12" x 12" (*U.S. Nominal Dimension) = 11 5/8" x 11 5/8". Actual Size: **295 mm x 295 mm**. This is a rectified tile.

Sizing

Enviroshop is a rectified tile which means that every tile is precisely cut for exact size dimension. This allows for tighter grout joints due to tile size consistency. Even with rectification precision, tiles dimensions may vary within **(+) or (-) 1 mm** in sizing. This is within ANSI A137.1 and TCNA (Tile Council of North America) standards compliance. 1 mm = 0.03937" or approximately 1/16" or 3/64" in fractional sizing.

Description

A permanent enhanced porcelain technology floor tile and system for use in automotive workshop and climate controlled service drive environments. For interior environments only.

STF (Slip, Trip, and Fall) Risk Management

Determining your environment of use for STF risk mitigation.

Automotive Environment Use.



Automotive service facilities face new ANSI STF (slip, trip, and fall) safety standards which require a closer inspection by dealers, architects, and their builders for the type of floor surface and tile to be used.

The good news is, AutoStoneUSA has the solutions and products to help you measure and reduce your STF (slip, trip, and fall) risk exposure, regardless of your facility design and operational use.

The new ANSI A326.3 2021 (STF Standard) states "...specifier shall determine materials appropriate for project conditions, considering by way of example, but not in limitation, type of use, traffic, expected contaminants, expected maintenance, expected wear, and manufacturers' guidelines and recommendations."

This new ANSI standard creates (5) categories which provide definition to help specifier (architect), builder (GC), facility operator (dealership owner), and flooring contractor, on how to define your facility. The previous approach of "one-size-fits-all" does not apply. Below are the categories which your facility is to be measured by to determine your risk category. Depending on your use of high-speed doors, HVAC controls and exposure to the elements impacts your rating. Additionally, geographical location (climate), and exposure to chemicals, especially **oils and grease**, determine "classification". **Automotive service requires greater STF mitigation.**

ANSI A326.3 2021	Classification	Reference Category	Criteria	Comments	AutoStoneUSA
4.1.1	Interior, Dry	ID	> 42 dry DCOF ¹ (per Section 9.1)	risks for automotive retail	YES
4.1.2	Interior, Wet	IW	> 42 wet DCOF ¹ (per Section 9.1)	small retail showroom areas	YES
4.1.3	Interior, Wet Plus	IW+	> 50 wet DCOF ¹ (manufacturer declared)	a case can be made for this lower classification	YES
4.1.4	Exterior, Wet	EW	> 55 wet DCOF ¹ (manufacturer declared)	service drive & spaces w/ high-speed doors & HVAC controls	YES
4.1.5	Oils/Grease	O/G	> 55 wet DCOF ¹ (manufacturer declared)	this standard that impacts service drive & workshop environments	YES

Notes: European (EN) ratings do not apply.

ANSI A326.3 Definitions for Environment of Use - below are the actual standards which impact automotive service environments and material selection.

4.1.3 Interior, Wet (IW+) Environment

4.1.3 Interior, Wet Plus: See Section 3.4. *Product shall be manufacturer-declared for this category* based on manufacturing parameters, internal quality control criteria, and manufacturer experience with similar surfaces. Attributes to consider include, but are not limited to: product size, texture, structure, and drainage. Products meeting Interior, Wet Plus criteria may require frequent maintenance to keep clean.

INFORMATIVE NOTE:

Possible Area of Use: Subject to determination by specifier and the criteria in this standard, may include, but are not limited to, public showers, interior pool decks, locker rooms, covered exterior areas, shower rooms. "Front of the house" applications to restaurants with no open kitchen, and in "front of the house" applications such as waiting, bar, and staff service restaurants. Such factors include, but are not limited to: expected contaminants, drainage, surface structure, effect of structure on the DCOF measurement, number of gross area (see Informative Note in Section 9.1.3), traction-enhancing patterns, and intended use, in addition to the other criteria in this standard. As the suitability of the installed hard surface flooring depends significantly on such factors, a single normative DCOF limit value is not provided.

4.1.4 Exterior, Wet (EW) Environment

4.1.4 Exterior, Wet: See Section 3.4. *Product shall be manufacturer-declared for this category* based on manufacturing parameters, internal quality control criteria, and manufacturer experience with similar surfaces. Attributes to consider include, but are not limited to: product size, texture, structure, and additionally in wet applications, drainage. Products meeting Exterior, Wet criteria may require frequent maintenance to keep clean.

INFORMATIVE NOTE:

Possible Area of Use: Subject to determination by specifier and the criteria in this standard, may include, but are not limited to, brief outdoor living spaces including pool decks, walkways, patios, and sidewalks, where such floors may be walked upon when wet (excluding ice or snow), plant, clean, maintained, and free of standing water or other contaminants.

INFORMATIVE NOTE: In the absence of representing manufacturer-declared product use classification, excepting where measured DCOF is lower due to the impact of structure on the DCOF measurement, it is generally accepted that hard surface flooring in this category should have at least a minimum DCOF value of 833¹, with factors other than wet DCOF also taken into consideration. Such factors include, but are not limited to: expected contaminants, drainage, surface structure, effect of structure on the DCOF measurement, number of gross area (see Informative Note in Section 9.1.3), traction-enhancing patterns, and intended use, in addition to the other criteria in this standard. As the suitability of the installed hard surface flooring depends significantly on such factors, a single normative DCOF limit value is not provided.

Environment of Use & Product Selection

AutoStoneUSA provides you the right product to address your STF risk.

Automotive Service & Workshop Environment Examples

The design of your service drive and workshop impact the risk you face when operating and doing business. Depending on risk tolerance as measured against ANSI standards: 4.1.3 (IW+), 4.1.4 (EW), and 4.1.5 (O/G), AutoStoneUSA has a tile system to help you mitigate your STF risk. AutoStoneUSA has solutions which are manufacturer declared for use in 4.1.5 (O/G), which states, **"level areas regularly exposed to automotive fluids..."**

All AutoStoneUSA service drive & workshop series include our "manufacturers declaration" which inform you of the appropriate environment of use. AutoStoneUSA is designed and manufactured for the automotive space. We are automotive flooring experts.

Examples of Automotive Service & Workshop Environments



Service Drive without (4) full-height walls & doors.
Any structure without (4) full-height walls & doors which control exposure to elements would default to exterior wet (EW), or oil/grease (O/G).



Service Drive with Manual Roll-Up doors.
Manual roll-up doors do not control the environment, impact throughout daily use and would default to exterior wet (EW), or oil/grease (O/G).



Service Drive with High-Speed Roll-Up doors.
High-speed doors can control the environment throughout daily use. High speed doors provide ownership an environment that may rate for interior, wet, plus (IW+), exterior wet (EW), or oil/grease (O/G).



Workshop with Limited Vehicle Access Doors
Large footprint tech workshops with limited vehicle doors that minimize exterior elements from impacting workshop conditions can be rated as interior, wet, plus (IW+).



Workshop with California Bay Design
Large footprint tech workshops with multiple vehicle doors that do not minimize exterior elements from impacting workshop conditions should be considered as exterior, wet (EW) or oil/grease (O/G) environments.



Oil and Lube Express.
An Oil Lube where environment is regularly exposed to automotive fluids, and is exposed to weather conditions due to door access design would be rated both interior (EW) or oil/grease (O/G).

MANUFACTURER-DECLARED USE

14 Manufacturer-Declared Product Use Classification: *Manufacturers shall declare product use classification based on manufacturing parameters, internal quality control criteria, their experience with similar surfaces, and the criteria in this standard for all surfaces classified under Section 4.1.1, 4.1.4, and 4.1.5, noting surface, and flooring where surface structure (e.g. dimensionally patterned or profiled surfaces) results in misleading DCOF measurements due to test device constraints. (Optional, surfaces classified under Section 4.1.2 shall also be permitted to be manufacturer-declared.)* Hard surface flooring manufacturers shall define internal product selection criteria (for example, but not in limitation, type of use, traffic, expected contaminants, expected maintenance, expected wear, and manufacturers' guidelines and recommendations).

INFORMATIVE NOTE: Narrative measured DCOF limit values are not provided in this standard for exterior applications, interior ramps and inclines, pool decks, shower floors, or flooring that is contaminated with material other than water or where intended or not for use in such.

Recommended Grout Joint Sizing

DriveSeries12USA is a rectified tile which provides you precise tile sizing. This allows you to achieve tighter grout joints. However, your grout joint is dependent upon flat floor conditions. EnviroShop12USA is rectified to **295 mm x 295 mm**.

The recommended grout width is typically 1/8" (or 3 mm) to 3/16" (or 5 mm) depending on substrate conditions. Below is a Flat Floor (FF) chart which outlines what grout width you can achieve based on your FF rating.

Tile Size	1/4" grout or larger	3/16" grout or larger	1/8" grout or larger
12" x 12"	FF25 or 1/4" over 10'	FF32 or 3/16" over 10'	FF50 or 1/8" over 10'

Enviroshop Sizes and Thicknesses in Metric & U.S. Nominal

*thickness tolerance is (+) or (-) 1 mm

Smoke Grey	Alloy Grey	Carbon Black
to be developed	12" x 12"* _(nominal)	12" x 12"* _(nominal)
custom production	295 mm x 295 mm	295 mm x 295 mm
	9.4 mm thick	9.4 mm thick

* = U.S. Nominal Dimension

12" x 12" (U.S. Nominal Dimension) = 11 5/8" x 11 5/8" (Nominal Fractional Inch Size)



autostone usa

DriveSeries12USA

advanced surface technology



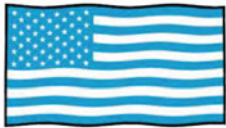
12" x 12"*



Made in USA ■ Alloy Grey

Made in USA ■ Carbon Black

* thickness tolerance is: (+) or (-) 1 mm



MADE IN USA

ALL PRODUCTION STARTING 2024

* = U.S. Nominal Dimension

Nominal Size: 12" x 12" (approximate). 11 ⁵/₈" x 11 ⁵/₈" (US nominal fraction size).

Actual Size: 295 mm x 295 mm with +/- of 1 mm tolerance.

Reference: CAL5

Material Availability

■ MADE and STOCKED in USA

Product stocked in USA warehouse. 1 week preparation + ground (US) shipping.

ALL PRODUCTION 2023 AND PRIOR YEARS

* = U.S. Nominal Dimension

Nominal Size: 12" x 12" (approximate). 11 ⁷/₈" x 11 ⁷/₈" (US nominal fraction size).

Actual Size: 297 mm x 297 mm with +/- of 1 mm tolerance.

Reference: CAL7

Material Availability

AutoStoneUSA has limited inventory in CAL 7 (297x297 tile) to support installations with exact size tile. If your project includes warranty and repairs and was supplied with materials prior to 2024, please discuss your tile sizing so we can support you with the appropriate size tile to support your project.

Contact:

hello@autostoneusa.com

214-393-4875 phone