

Enviroshop Guide Book

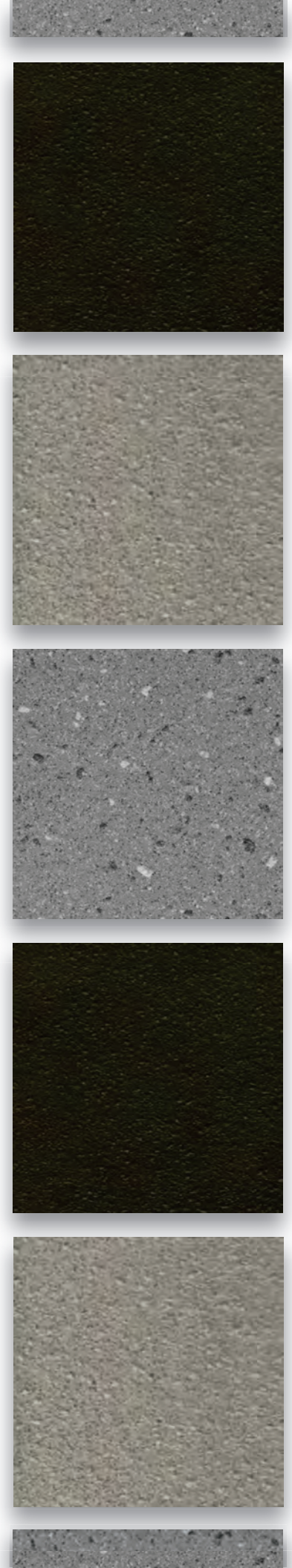
2022 Edition

Contains tile specifications including thickness, grout material matching, and more.

Product Use Category 4.1.3 Interior, Wet Plus (IW+)



MADE IN AMERICA

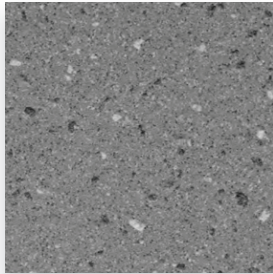




Made in USA

enviroshop

smarter, better, workshops



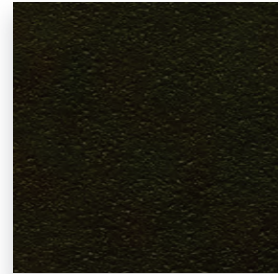
Smoke Grey

12" x 12"*



Alloy Grey

12" x 12"*



Carbon Black

12" x 12"*

* = U.S. Nominal Dimension

12" x 12" (U.S. Nominal Dimension) = 11 7/8" x 11 7/8" (Actual Size)

Sizing

Enviroshop is a rectified dimensionally so every tile is the exact dimension. Dimensions may vary within (+) or (-) 2mm in sizing.

Surface

Enviroshop is medium traction surface. For interior applications, with good drainage. Can be used for floors walked on when wet if level, clean, maintained and free of standing water or other contaminants. Should be cleaned with frequent maintenance to keep clean and free of contamination and debris when dealership is operating. To best manage STF (slip, trip, and fall) risk, spills and chemicals should be spot cleaned immediately and not left on surface. Floor cleaning should include use of de-greasing chemical, floor scrubber sweeper machine with wet vacuum to suck-up dirty water and debris as part of cleaning process. Service drive environments should have a high-speed vehicle access door to control exposure to exterior environment.

Description

A permanent enhanced porcelain technology floor tile and system for use in automotive workshop and climate controlled service drive environments. For interior environments only.

Advantages

1. Our original workshop floor with textured surface.
2. Surface texture is elevated above the surface bed for easier cleaning.
3. Will not permanently stain or darken when properly cleaned.
4. This product has:

slipresistant

textured floor surfaces

Manufacturer

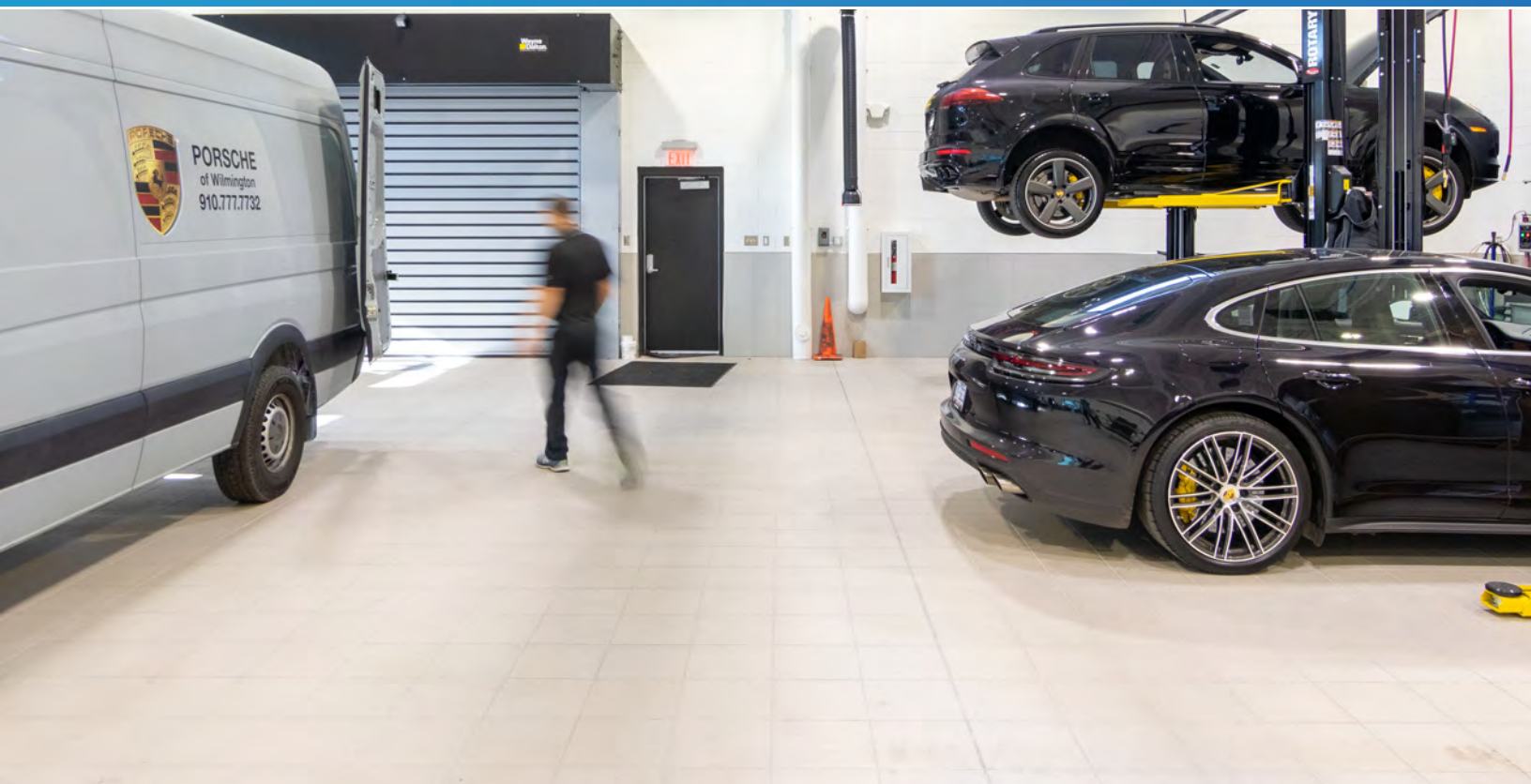
AutoStone Floor Systems

Product Use Category 4.1.2 Interior, Wet Plus (IW+)

Evaluate for interior use in automotive workshop and service drive environments with high speed doors and tech locker rooms. Enviroshop is medium traction surface. For interior applications, with good drainage. Floors walked on when wet should be level, clean, maintained and free of standing water or other contaminants. Should be cleaned with frequent maintenance to keep clean.

DCOF

Meets and exceeds .50 DCOF rating as required for ANSI A326 4.1.3 (IW+)



brightfinish

ultra-cleanable technology

Brightfinish Ultra-Cleanable Technology

Brightfinish is a permanent sealant baked-in during kiln-firing process. The Brightfinish permanent sealant aids dealership with their cleaning practices by sealing surface micropores which trap and hold-on to rubber transfer, grease, oil or other contaminants.

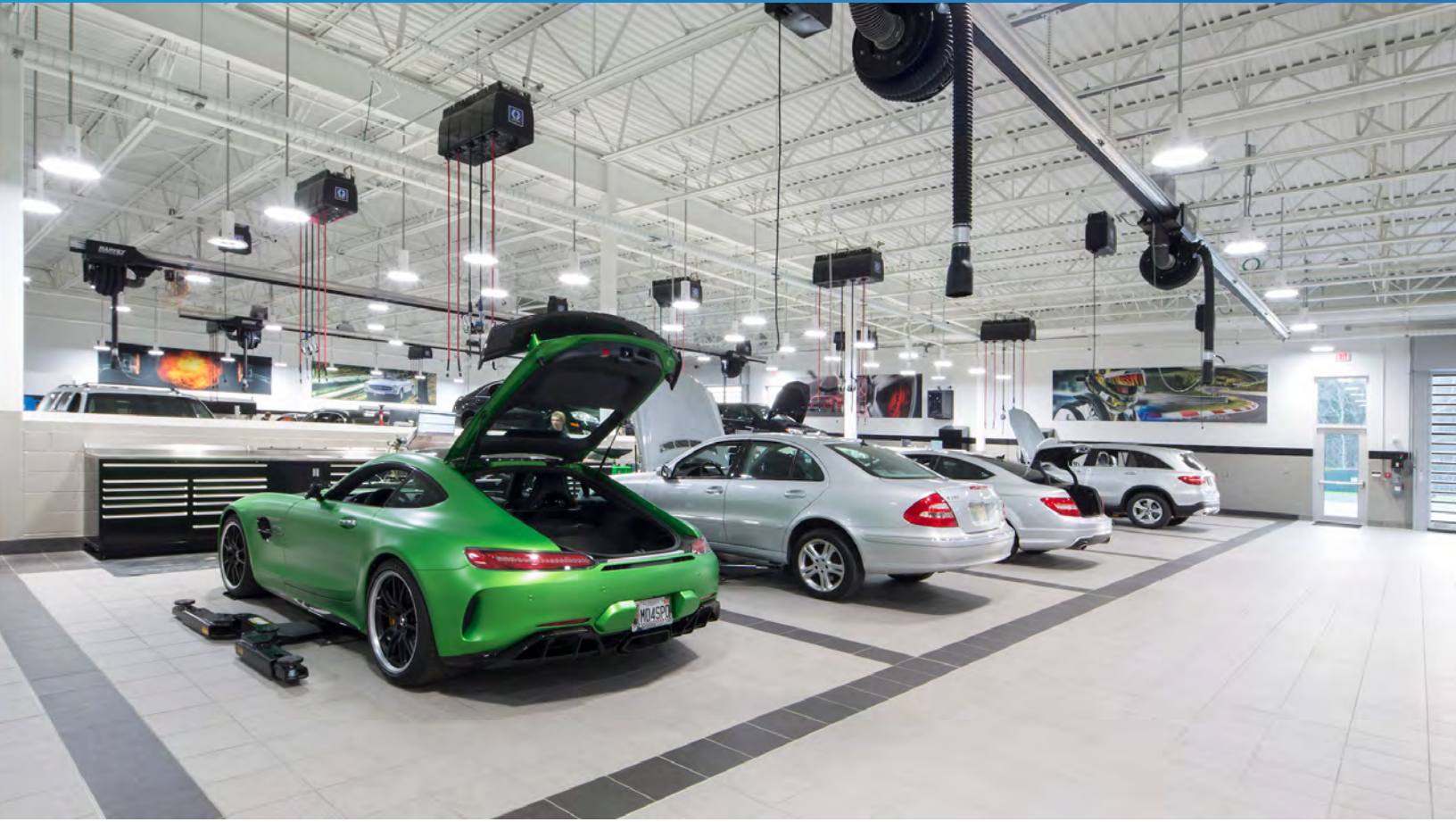
Enhanced Impervious Surface Technology

An impervious tile is the highest performance standard in the porcelain tile industry. The definition of an impervious tile is a surface that absorbs moisture between 0.5% to 0.001%. At AutoStone, we think that 0.5% is too much absorbency, and in an automotive dealership will cause tiles to absorb oil, grease, petroleum, gasoline and other contaminants. When this happens, your tile surface will darken over use and this leads to potential hazards such as STF (slip, trip and fall) events. Petroleum and oils soaked surfaces can pose other hazards when not properly removed with regularly scheduled and proper cleaning practices. With the addition of our brightfinish we enhance our impervious tiles and reduce their absorbency to levels at the lowest end of the spectrum (0.001% or less). This means nothing is absorbed by an AutoStone workshop or service drive floor tile. AutoStone workshop floor systems are premium floor systems which are designed to resist staining and be easier to clean.

Limitations

Surface is a non-vitreous (impervious) enhanced porcelain tile. Oil, grease and all contaminants will remain on surface until properly cleaned and removed.

Not for use in *other in IW+ EW or O/G Product Use Applications*. These include environments such as carwash areas where high volume water and/or high pressure water systems are used.





enviroshop <small>AutoStone Floor Systems</small>	THICKNESS		SMOKE GREY	ALLOY GREY	CARBON BLACK
	METRIC DIMENSIONS	U.S. NOMINAL DIMENSIONS			
12" x 12"* <small>* = U.S. Nominal Dimensions 11 7/8" x 11 7/8" (Actual Size) Dimensions may vary within (+) or (-) 0.2mm in sizing</small>	9 mm*	7/16"			

* thickness tolerance is: (+) or (-) .5mm

Enviroshop Sizes and Thicknesses in Metric & U.S. Nominal

*thickness tolerance is (+) or (-) .5mm

Smoke Grey	Alloy Grey	Carbon Black
12" x 12"*	12" x 12"*	12" x 12"*
-9.0 mm (7/16")	-9.0 mm (7/16")	-9.0 mm (7/16")

* = U.S. Nominal Dimension

12" x 12" (U.S. Nominal Dimension) = 11 7/8" x 11 7/8" (Actual Size)





12" x 12"*



- Stocked USA
- Stocked USA
- Stocked USA

- Alloy Grey
- Smoke Grey
- Carbon Black

* thickness tolerance is: (+) or (-).5mm

* = U.S. Nominal Dimension

12" x 12" (U.S. Nominal Dimension) = 11 7/8" x 11 7/8" (Actual Size)

Material Availability

- **MADE and STOCKED in USA**
Product stocked in USA warehouse. 1 week preparation + ground (US) shipping.



Made in USA

enviroshop

smarter, better, workshops

Installation

See AutoStone recommended 09300 specifications for thinset standards on concrete substrate and AutoStone recommended installation standards.

Recommended Grout Color & Setting Materials by Laticrete

Alloy Grey

Grout: Laticrete Permacolor 89 Smoke Grey

Thinset: LHT Plus

Below: actual color varies, example is only representative



Smoke Grey

Grout: Laticrete Permacolor 42 Platinum

Thinset: LHT Plus

Below: actual color varies, example is only representative



Carbon Black

Grout: Laticrete Permacolor 45 Raven

Thinset: LHT Plus

Below: actual color varies, example is only representative

