

Subaru Tile Guide

2021 Edition

Subaru Brand Compliant Program
AutoStoneUSA.com/Subaru

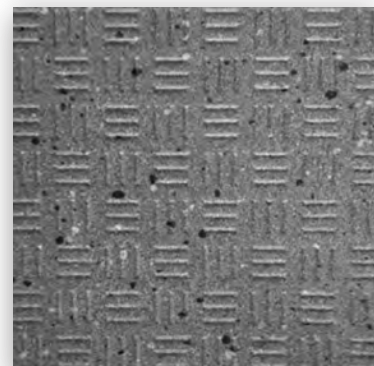
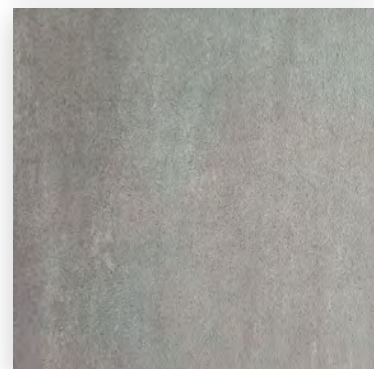
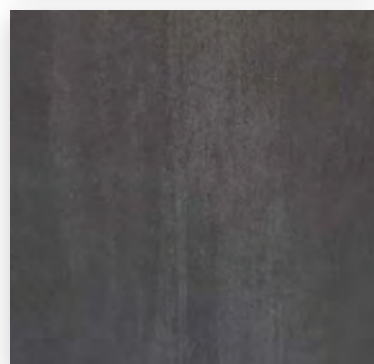
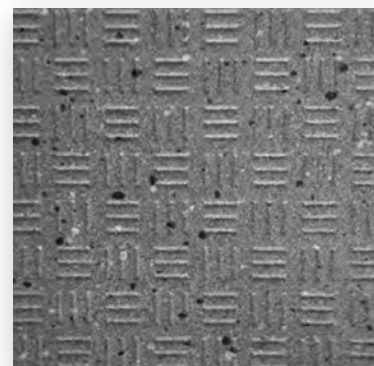
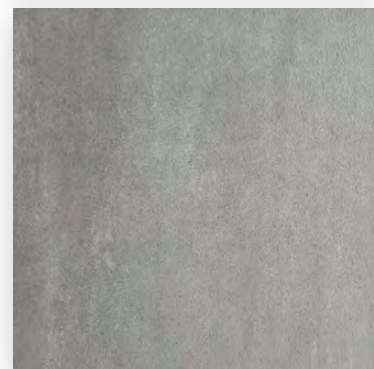
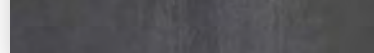


Clean.Tech

brightfinish
ultra-cleanable technology

AutoStoneUSA.com

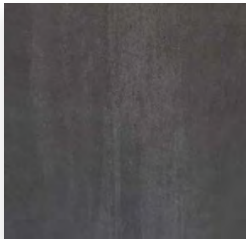
© 2021 AutoStone Floor Systems, All Rights Reserved.



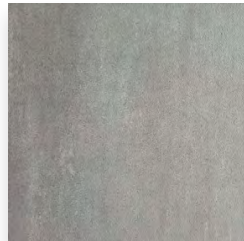
autostone
floor systems



SUBARU



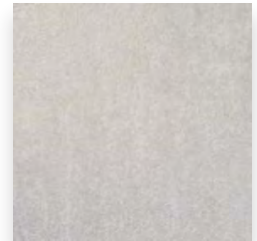
CT-1 and CWT-1



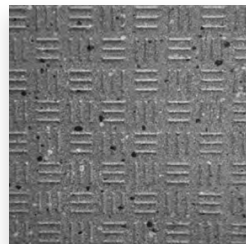
CT-1 and CWT-1



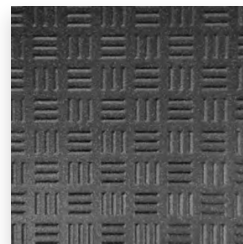
CWT-1



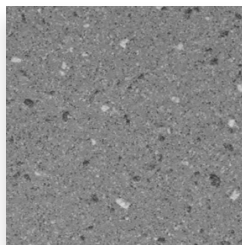
CWT-1



CT-6



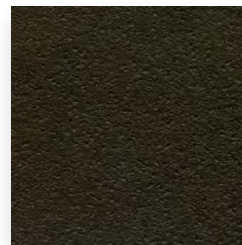
CT-7



CT-6



CT-6



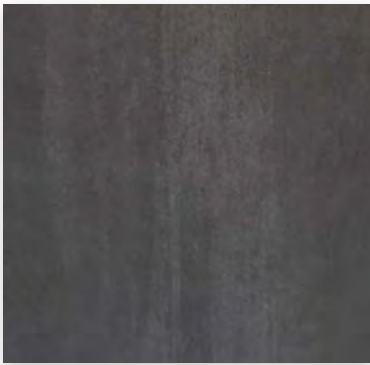
CT-7

Contact Information

Email: subaru@autostoneusa.com

Phone: 800-772-1473 (Toll Free)

Phone: 214-393-4875 (Main Phone)



CT-1 Charcoal

Series: CleanTech- or - Premier

Color: Charcoal

Finish: Brightfinish - or - Matte

Size: 24" x 24" (nominal)

Thickness:  Clean.Tech  Premier

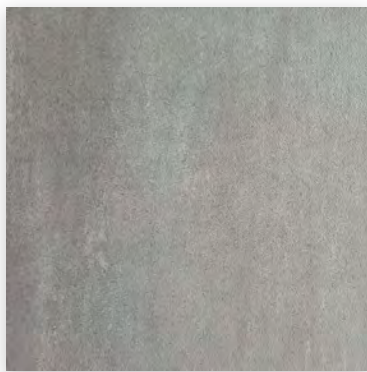


Below: actual color varies, example is only representative



Grout: Laticrete Permacolor Select 45 Raven

Thinset: LHT Plus




CT-1 Deep Grey

Series: CleanTech

Color: Deep Grey

Finish: Brightfinish

Size: 24" x 24" (nominal)

Thickness: 



Below: actual color varies, example is only representative



Grout: Laticrete Permacolor Select 42 Platinum

Thinset: LHT Plus

brightfinish

ultra-cleanable technology

AutoStone CT-1 (Subaru Showroom) Tiles with Brightfinish Reduce Stains and Clean Easier

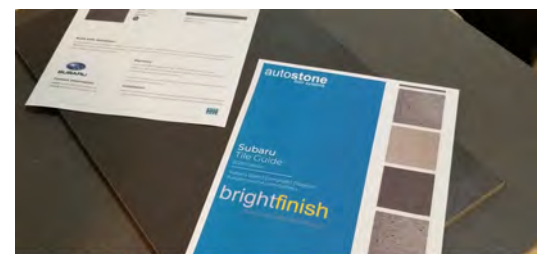
The brightfinish surface aids them in their cleaning practices and enhances your showroom appearance. AutoStone tile is much easier to clean for Subaru dealers. AutoStone brightfinish eliminates* concerns with your tile showing haze, dirt, grime, etc., (*with proper cleaning practices). Tile with brightfinish does easily stain, especially with tire-bright, or similar tire dressing materials.

The result? Better appearing Subaru stores, happier dealers!

AutoStone CT-1 (Subaru Showroom) Tiles Reduce STF (Slip, Trip, Fall) Risk.

The DCOF (dynamic coefficient of friction) rating for this tile increases with this finish. Our brightfinish embeds micro-granule traction elements which increase the slip-resistance.

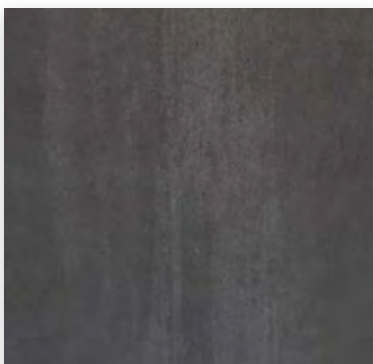
The result: Subaru stores with floors that reduce STF risk in showrooms. Dealers, employees and customers benefit!



auto**stone** floor systems bright**finish** ultra-cleanable technology Subaru CT-1

Click the image above for a Brightfinish demonstration





CWT-1 Charcoal

Series: CleanTech - or - Premier

Color: Charcoal

Finish: Brightfinish - or - Polished

Size: 24" x 24" (nominal)

Thickness:  Clean.Tech  Premier

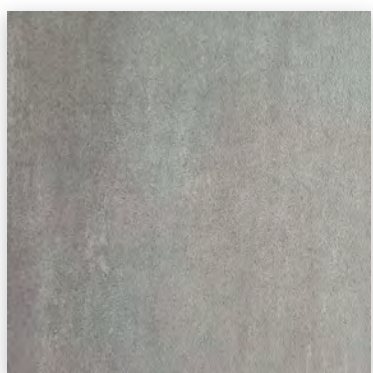


Below: actual color varies, example is only representative



Grout: Laticrete Permacolor Select 45 Raven

Thinset: LHT Plus



CWT-1 Deep Grey

Series: CleanTech - or - Premier

Color: Deep Grey

Finish: Brightfinish - or - Polished

Size: 24" x 24" (nominal)

Thickness:  Clean.Tech  Premier



Below: actual color varies, example is only representative



Grout: Laticrete Permacolor Select 42 Platinum

Thinset: LHT Plus



CWT-1 Grey

Series: Premier

Color: Grey

Finish: Polished

Size: 24" x 24" (nominal)

Thickness:  Premier

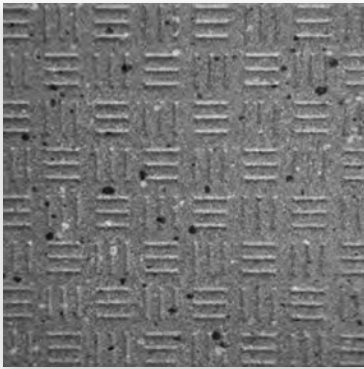
Below: actual color varies, example is only representative



Grout: Laticrete Permacolor Select 89 Smoke Grey

Thinset: LHT Plus





CT-6 Smoke Grey

Series: Driveseries!

Color: Smoke Grey

Finish: R12 Textured

Size:



8" x 8" U.S. Nominal Dimensions

7 7/8" x 7 7/8" Actual Dimensions

**Dimension may vary within (+) or (-) 2mm in sizing*

Product Code:

AS.DS.0808.SG.R-12/ABC

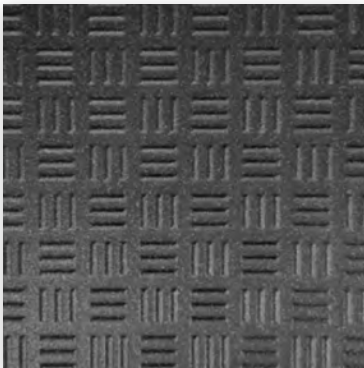
Thicknesses:   

Below: actual color varies, example is only representative



Grout: Laticrete Permacolor 89 Smoke Grey

Thinset: LHT Plus



CT-7 Carbon Black

Series: Driveseries!

Color: Carbon Black

Finish: R12 Textured

Size:

8" x 8" U.S. Nominal Dimensions

7 7/8" x 7 7/8" Actual Dimensions

**Dimension may vary within (+) or (-) 2mm in sizing*

Product Code:

AS.DS.0808.CB.R-12/ABC

Thicknesses:   


Below: actual color varies, example is only representative






Grout: Laticrete Permacolor 45 Raven

Thinset: LHT Plus

driveseries!
advanced surface technology

 Stocked USA  Smoke Grey
Stocked USA  Carbon Black

 Stocked EU  Smoke Grey
Stocked EU  Carbon Black

 Standard 8-10  Smoke Grey
Standard 8-10  Carbon Black

* thickness tolerance is: (+) or (-) .5mm

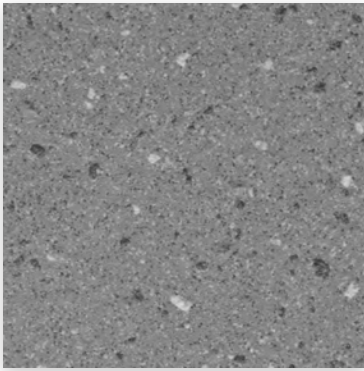
Material Availability - 8" x 8"

** equals U.S. Nominal Dimension. 7 7/8" x 7 7/8" Actual Dimensions. Dimension may vary within (+) or (-) 2mm in sizing.*

-  **STOCKED USA**
Product stocked in USA warehouse.
1 week preparation + ground shipping.
-  **STOCKED EU**
Product stocked at factory in EU.
1-2 week preparation + 4 week shipping.
-  **STANDARD 8-10**
Standard production product.
8-10 week production + 4 week shipping.

If not available, lead-time is 6-8 weeks depending on your project location.





CT-6 Smoke Grey

Series: Enviroshop

Color: Smoke Grey

Size:

12" x 12" U.S. Nominal Dimensions

11 7/8" x 11 7/8" Actual Dimensions

**Dimension may vary within (+) or (-) 2mm in sizing*

Finish: Textured

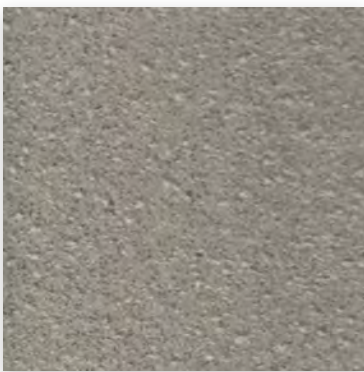
Thicknesses:  

Below: actual color varies, example is only representative



Grout: Laticrete Permacolor 42 Platinum

Thinset: LHT Plus



CT-6 Alloy Grey

Series: Enviroshop

Color: Alloy Grey

Size:

12" x 12" U.S. Nominal Dimensions

11 7/8" x 11 7/8" Actual Dimensions

**Dimension may vary within (+) or (-) 2mm in sizing*

Finish: Textured

Thicknesses:  

Below: actual color varies, example is only representative



Grout: Laticrete Permacolor 89 Smoke Grey

Thinset: LHT Plus



CT-7 Carbon Black

Series: Enviroshop

Color: Carbon Black

Size:

12" x 12" U.S. Nominal Dimensions

11 7/8" x 11 7/8" Actual Dimensions

**Dimension may vary within (+) or (-) 2mm in sizing*

Finish: Textured

Thicknesses:  

Below: actual color varies, example is only representative



Grout: Laticrete Permacolor 45 Raven

Thinset: LHT Plus





enviroshop

smarter, better workshops

Material Availability - 12" x 12"

**equals U.S. Nominal Dimension. 11 7/8" x 11 7/8" Actual Dimensions. Dimension may vary within (+) or (-) 2mm in sizing.*

-  Stocked USA ■ Alloy Grey
- Stocked USA ■ Smoke Grey
- Stocked USA ■ Carbon Black
-  Standard 8-10 ■ Alloy Grey
- Standard 8-10 ■ Smoke Grey
- Standard 8-10 ■ Carbon Black

■ STOCKED USA

Product stocked in USA warehouse. 1 week preparation + ground (US) shipping.

■ STANDARD 8-10

Standard production product. 8-10 week production + ground (US) shipping.

If not available, lead-time is 6-8 weeks depending on your project location.

* thickness tolerance is: (+) or (-) .5mm

Build with AutoStone.

Our program supports Subaru dealers with the highest quality, most affordable and comprehensive floor tile system for your dealership project. Affordable, high-quality, and easy to do business with are what you will experience with AutoStone. Call us today to support your project.

Warranty

AutoStone offers a tile materials defect warranty.

AutoStone offers an installation warranty when warranty services are contracted through AutoStone. Length of Warranty is dependent upon contracted term. AutoStone does not offer any warranty of any kind when a third party installer is involved except the tile materials defect warranty. AutoStone has put together a unique package of products with Laticrete to provide contractors a 10 year warranty from Laticrete, when the purchase the correct materials directly through AutoStone.

See Warranties on our website for specifics.

Installation

See AutoStone recommended 09300 specifications for thinset standards on concrete substrate and AutoStone recommended installation standards.

