

SUPPLY CHAIN STRONG



STOCKED IN USA

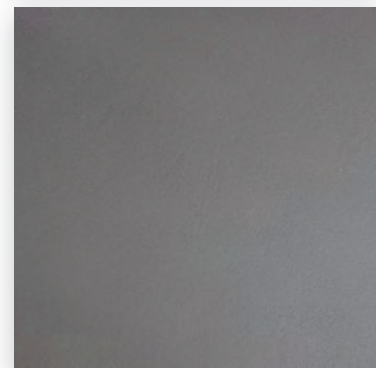
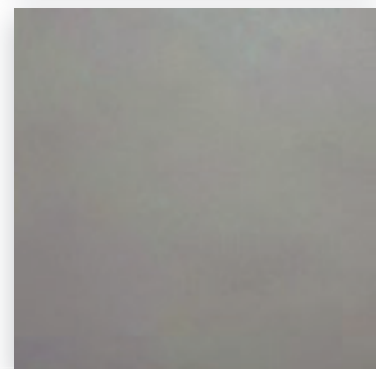
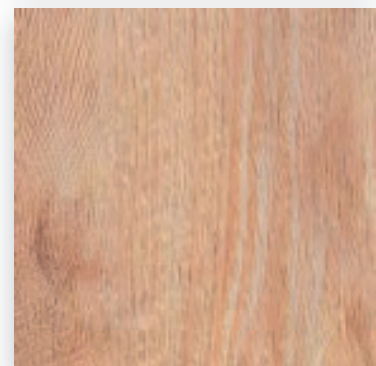
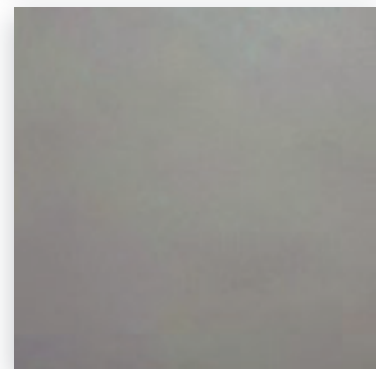


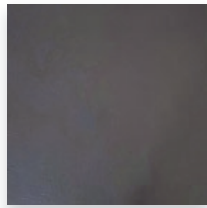
Mercedes-Benz Tile Guide

2021 Edition

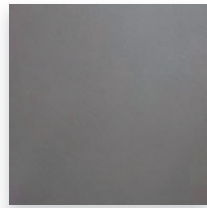
Mercedes-Benz Certified Autohaus3 Compliant
AutoStoneUSA.com/Mercedes-Benz

Click image below for video introduction on materials

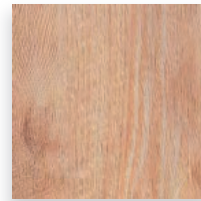




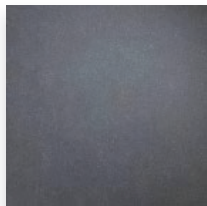
Nero



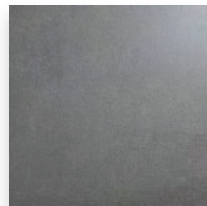
City



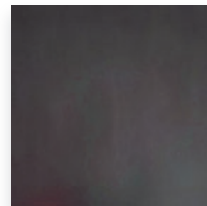
Maple Beech



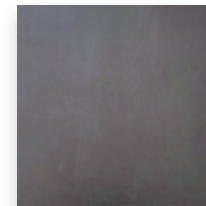
Black Asphalt



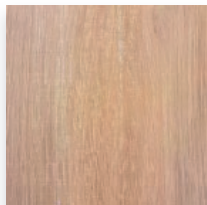
Deep Grey Asphalt



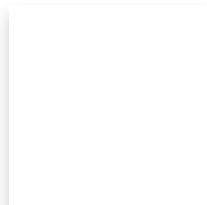
Deutsche Graphit



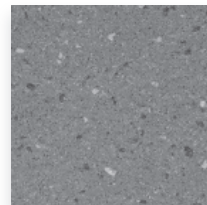
Deutsche Gris



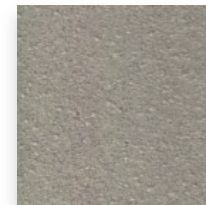
Maple Harvest



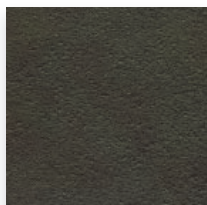
WT-1 & WT-3



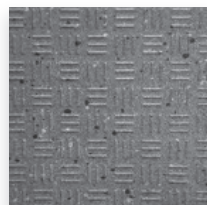
F-8



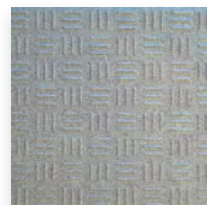
F-8



F-8



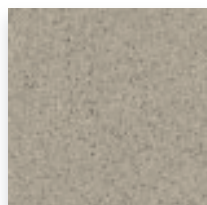
FT-14



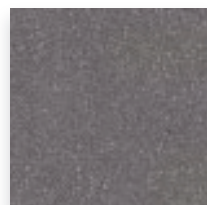
FT-15



FT-16



FT-14

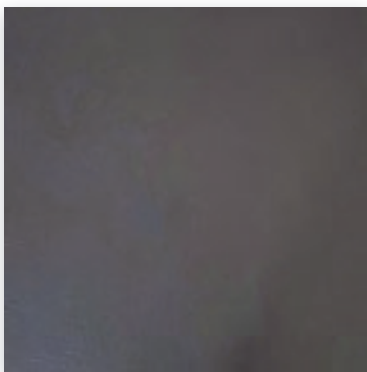


FT-16



Scheme I

Showroom Vehicle Display & Customer Areas



Nero

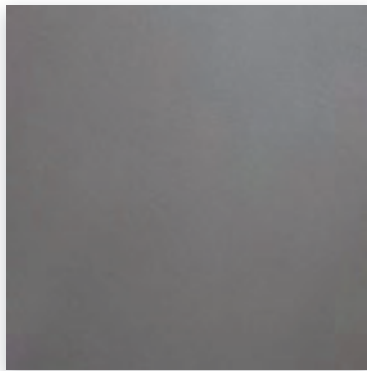
Series: Autobahn
Color: Nero
Finish: Natural | Textured
Size: 12" x 24", 24" x 24" (nominal)
Edge: Rectified profile (exact dimension)
Product Code:
AS.MB.CER.2424.NERO.NAT
Thickness: 9.5 mm

Below: actual color varies, example is only representative



Grout: Laticrete Permacolor Select 22 Midnight Black
Thinset: LHT Plus

STOCKED IN USA



City

Series: Autobahn
Color: City
Finish: Natural | Textured
Size: 12" x 24" or 24" x 24" (nominal)
Edge: Rectified profile (exact dimension)
Product Code:
AS.MB.CER.2424.CI.NAT
Thickness: 9.5 mm

Below: actual color varies, example is only representative



Grout: Laticrete Permacolor Select 45 Raven
Thinset: LHT Plus

STOCKED IN USA



Contact Information

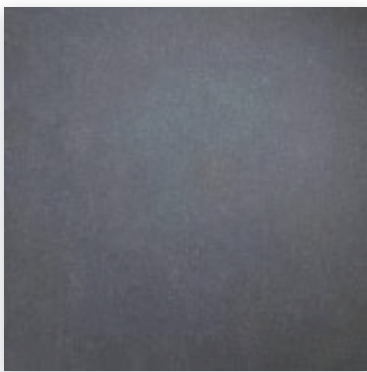
Phone: 214-393-4875 (Mercedes-Benz Line) **Email:** mercedes@autostoneusa.com





Scheme II

Showroom Vehicle Display & Customer Areas



Black Asphalt

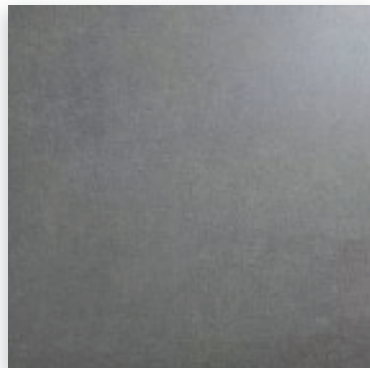
Series: Asphalt
Color: Black Asphalt
Finish: Textured Asphalt
Size: 24" x 24" (nominal)
Edge: Rectified profile (exact dimension)
Product Code:
AS.MB.AH3.2424.BLKASP.TXA
Thickness: 8mm

Below: actual color varies, example is only representative



Grout: Laticrete Permacolor Select 22 Midnight Black
Thinset: LHT Plus

STOCKED IN USA



Deep Grey Asphalt

Series: Asphalt
Color: Deep Grey Asphalt
Finish: Textured Asphalt
Size: 24" x 24" (nominal)
Edge: Rectified profile (exact dimension)
Product Code:
AS.MB.AH3.2424.DGASP.TXA
Thickness: 8mm

Below: actual color varies, example is only representative



Grout: Laticrete Permacolor Select 60 Dusty Grey
Thinset: LHT Plus

STOCKED IN USA



Contact Information

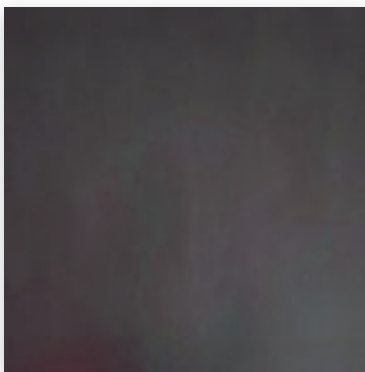
Phone: 214-393-4875 (Mercedes-Benz Line) **Email:** mercedes@autostoneusa.com





Scheme III

Showroom Vehicle Display & Customer Areas



Deutsche Graphit

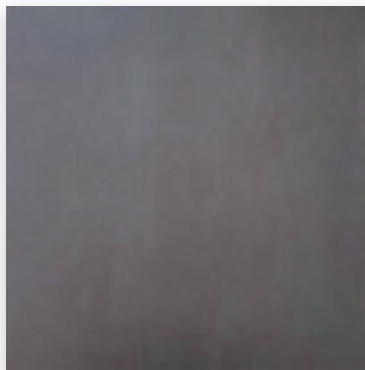
Series: Stuttgart
Color: Deutsche Graphit
Finish: R-10 Natural
Size: 12" x 24" or 24" x 24" (nominal)
Product Code:
 AS.MB.NCSTU.2424.DGPT.R10.bright

Below: actual color varies, example is only representative



Grout: Laticrete Permacolor Select 22 Midnight Black
Thinset: LHT Plus

**SPECIAL ORDER
 14-16 WEEK
 LEADTIME**



Deutsche Gris

Series: Stuttgart
Color: Deutsche Gris
Finish: R-10 Natural
Size: 12" x 24" or 24" x 24" (nominal)
Product Code:
 AS.MB.NCSTU.2424.DGRIS.R10.bright

Below: actual color varies, example is only representative



Grout: Laticrete Permacolor Select 60 Dusty Grey
Thinset: LHT Plus

**SPECIAL ORDER
 14-16 WEEK
 LEADTIME**

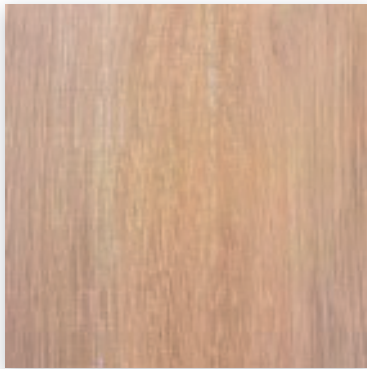
Contact Information

Phone: 214-393-4875 (Mercedes-Benz Line) **Email:** mercedes@autostoneusa.com





Customer Lounge & Customer Restrooms



Maple Harvest

Series: WoodPlank
Color: Maple Harvest
Finish: R-10 Natural
Size(s):
6" x 32" (nominal)
Product Code (6" x 32"): AS.MapleHarvest.0632.BellaWood
Thickness:



PORCELAIN WoodPlank

Below: actual color varies, example is only representative



Grout: Laticrete Permacolor Select 81 Buttercream
Thinset: LHT Plus

STOCKED IN USA



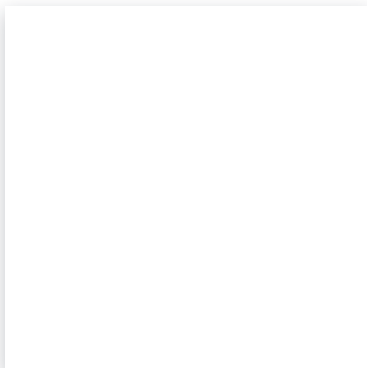
Maple Beech

Series: LV Woodplank
Color: Maple Beech
Finish: Textured Wood Grain
Size: 7" x 48" (nominal)
Edge: Rectified profile (exact dimension)
Product Code:
AS.MB.AH3.0748.GMP004-1.Resp
Thickness:



LV WoodPlank Automotive Retail Collection

STOCKED IN USA



WT-1 & WT-3

Series: Premier
Color: Bright White Ice **Finish:**
Glossy
Size: 3" x 6" or 6" x 6" and 12" x 24"
Product Code (3" x 6"):
WT-1 (Alternate)
Product Code (6" x 6"):
WT-3 (Alternate)
Product Code (12" x 24"):
WT-3 (Alternate)

Below: actual color varies, example is only representative



Grout: Laticrete Permacolor Select 44 Bright White
Thinset: LHT Plus

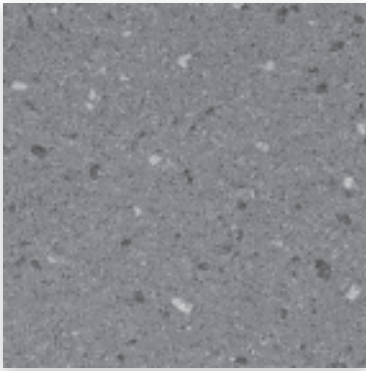
STOCKED IN USA



Contact Information

Phone: 214-393-4875 (Mercedes-Benz Line) **Email:** mercedes@autostoneusa.com





F-8 Smoke Grey

Series: Enviroshop

Color: Smoke Grey

Size:

12" x 12" U.S. Nominal Dimensions

11 7/8" x 11 7/8" Actual Dimensions

**Dimension may vary within (+) or (-) 2mm in sizing*

Finish: Textured

Thicknesses:

Scheme I & II Service Drive and Workshops

Below: actual color varies, example is only representative



Grout: Laticrete Permacolor 42 Platinum

Thinset: LHT Plus



STOCKED IN USA



F-8 Alloy Grey

Series: Enviroshop

Color: Alloy Grey

Size:

12" x 12" U.S. Nominal Dimensions

11 7/8" x 11 7/8" Actual Dimensions

**Dimension may vary within (+) or (-) 2mm in sizing*

Finish: Textured

Thicknesses:

Below: actual color varies, example is only representative

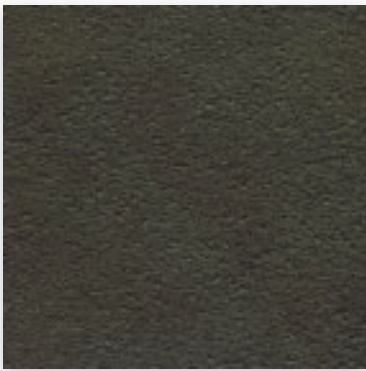


Grout: Laticrete Permacolor 89 Smoke Grey

Thinset: LHT Plus



STOCKED IN USA



F-8 Carbon Black

Series: Enviroshop

Color: Carbon Black

Size:

12" x 12" U.S. Nominal Dimensions

11 7/8" x 11 7/8" Actual Dimensions

**Dimension may vary within (+) or (-) 2mm in sizing*

Finish: Textured

Thicknesses:

Below: actual color varies, example is only representative



Grout: Laticrete Permacolor 45 Raven

Thinset: LHT Plus



STOCKED IN USA



enviroshop

smarter, better workshops

Material Availability - 12" x 12"

**equals U.S. Nominal Dimension. 11 7/8" x 11 7/8" Actual Dimensions. Dimension may vary within (+) or (-) 2mm in sizing.*

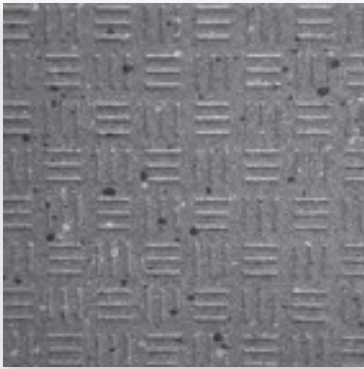
- Stocked USA ■ Alloy Grey
- Stocked USA ■ Smoke Grey
- Stocked USA ■ Carbon Black
- Standard 8-10 ■ Alloy Grey
- Standard 8-10 ■ Smoke Grey
- Standard 8-10 ■ Carbon Black

- **STOCKED USA**
Product stocked in USA warehouse. 1 week preparation + ground (US) shipping.
- **STANDARD 8-10**
Standard production product. 8-10 week production + ground (US) shipping.

If not available, lead-time is 6-8 weeks depending on your project location.

* thickness tolerance is: (+) or (-) .5mm





FT-14 Smoke Grey

Scheme I & II Service Drive and Workshops

Series: Driveseries!

Color: Smoke Grey

Finish: R-12 Textured

Size:

8" X 8" U.S. Nominal Dimensions

7 7/8" X 7 7/8" Actual Dimensions

**Dimension may vary within (+) or (-) 2mm in sizing*

Thicknesses:

Below: actual color varies, example is only representative



Grout: Laticrete Permacolor 42 Platinum

Thinset: LHT Plus



STOCKED IN USA



FT-15 Alloy Grey

Series: Driveseries!

Color: Alloy Grey

Finish: R-12 Textured

Size:

8" X 8" U.S. Nominal Dimensions

7 7/8" X 7 7/8" Actual Dimensions

**Dimension may vary within (+) or (-) 2mm in sizing*

Thicknesses:

Below: actual color varies, example is only representative



Grout: Laticrete Permacolor 89 Smoke Grey

Thinset: LHT Plus



STOCKED IN USA



FT-16 Carbon Black

Series: Driveseries!

Color: Carbon Black

Finish: R-12 Textured

Size:

8" X 8" U.S. Nominal Dimensions

7 7/8" X 7 7/8" Actual Dimensions

**Dimension may vary within (+) or (-) 2mm in sizing*

Thicknesses:

Below: actual color varies, example is only representative



Grout: Laticrete Permacolor 45 Raven

Thinset: LHT Plus



STOCKED IN USA



Stocked USA Alloy Grey
 Stocked USA Smoke Grey
 Stocked USA Carbon Black

Stocked EU Alloy Grey
 Stocked EU Smoke Grey
 Stocked EU Carbon Black

Standard 8-10 Alloy Grey
 Standard 8-10 Smoke Grey
 Standard 8-10 Carbon Black

* thickness tolerance is: (+) or (-) .5mm

Material Availability - 8" x 8"

** equals U.S. Nominal Dimension. 7 7/8" x 7 7/8" Actual Dimensions. Dimension may vary within (+) or (-) 2mm in sizing.*

STOCKED USA

Product stocked in USA warehouse.

1 week preparation + ground shipping.

STOCKED EU

Product stocked at factory in EU.

1-2 week preparation + 4 week shipping.

STANDARD 8-10

Standard production product.

8-10 week production + 4 week shipping.

If not available, lead-time is 6-8 weeks depending on your project location.



Scheme I & II
Service Drive and Workshops

Below: actual color varies, example is only representative



FT 14 Light (Cefalu) Grey

Series: Clinkershop
Color: Light (Cefalu) Grey
Finish: SLR Shop Textured
Size: 8" x 8"
Thickness:



STOCKED IN USA

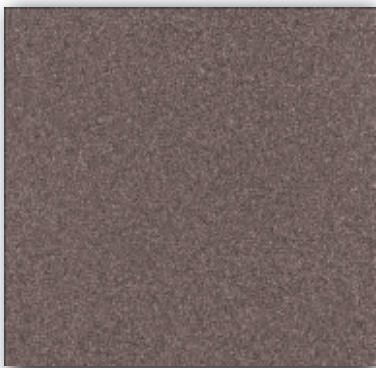


stocked in limited quantities, check with you AutoStone Audi program manager

Below: actual color varies, example is only representative



Grout: Laticrete Permacolor 89 Smoke Grey
Thinset: LHT Plus



FT 16 Elba Black

Series: Clinkershop
Color: Elba Black
Finish: SLR Shop Textured
Size: 8" x 8"
Thickness:



STOCKED IN USA



stocked in limited quantities, check with you AutoStone Audi program manager

Below: actual color varies, example is only representative



Grout: Laticrete Permacolor 45 Raven
Thinset: LHT Plus

Material Availability - 8" x 8"



Stocked USA	Light (Cefalu) Grey	Stocked USA	■ Light (Cefalu) Grey
Stocked USA	Elba Black	Stocked USA	■ Elba Black
Stocked EU	Light (Cefalu) Grey	Stocked EU	■ Light (Cefalu) Grey
Stocked EU	Elba Black	Stocked EU	■ Elba Black

STOCKED USA

Product stocked in USA warehouse. 1 week preparation + ground (US) shipping.

STOCKED EU

Product stocked at factory in EU. 1-2 week preparation + 4 week shipping.

Contact Information

Phone: 214-393-4875 (Mercedes-Benz Line) **Email:** mercedes@autostoneusa.com



Warranty

AutoStone offers a tile materials defect warranty. AutoStone offers an installation warranty when warranty services are contracted through AutoStone. Length of Warranty is dependent upon contracted term. AutoStone does not offer any warranty of any kind when a third party installer is involved except the tile materials defect warranty. AutoStone has put together a unique package of products with Laticrete to provide contractors a 10 year warranty from Laticrete, when the purchase the correct materials directly through AutoStone.

See Warranties on our website for specifics.

Build with AutoStone

AutoStone is the best choice for your Mercedes-Benz Certified Autohaus3 Compliant project. We are approved for: showroom, service drive and shop floor materials. Select AutoStone for your Mercedes-Benz brand compliant dealership tile finish.

One provider for your entire facility. Go with the experts, select AutoStone.

All materials are built and manufactured to build better Mercedes-Benz dealerships!

Installation

See AutoStone recommended 09300 specifications for thinset standards on concrete substrate and AutoStone recommended installation standards.

Contact Information

Email: mercedes@autostoneusa.com or mercedes-benz@autostoneusa.com

Phone: 214-393-4875 (Mercedes-Benz Line)

