

**SUPPLY CHAIN STRONG**



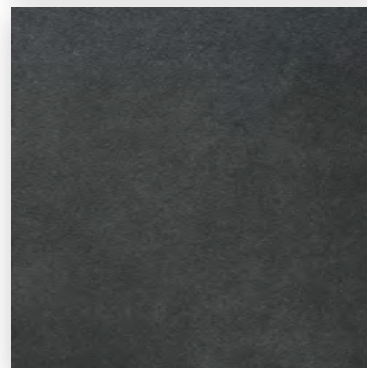
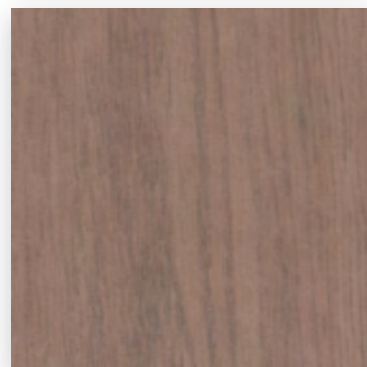
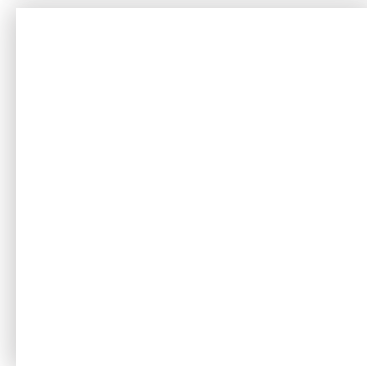
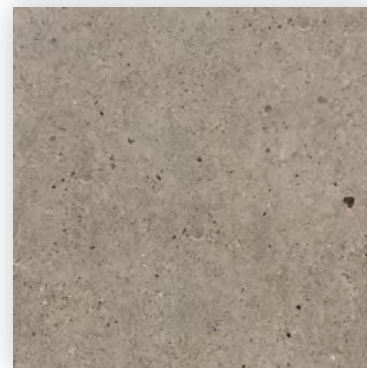
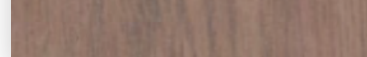
**STOCKED IN USA**



# Audi Tile Guide

*2021 Edition*

Audi Architectural Terminal Program  
[AutoStoneUSA.com/Audi](http://AutoStoneUSA.com/Audi)



**autostone**  
floor systems



**Audi**

NEW COLOR  
SCHEME!



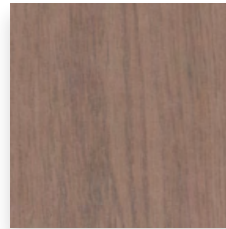
F-4

De-Emphasized



F-1

De-Emphasized

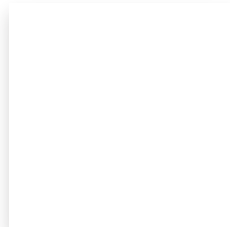


F-3

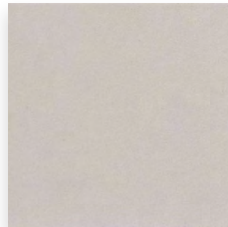
De-Emphasized



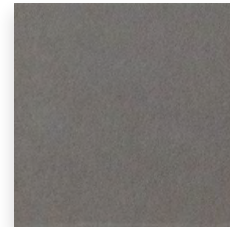
F-9



W-6



W-10



W-10

F-8





## F-4 NEW showroom tile - for all new projects!

**Series:** Silverstone  
**Color:** Taupe  
**Finish:** Honed | Natural  
**Size:** 32" x 32" stocked in USA  
 24" x 24" special order  
**Thickness:**

**9.0 mm** \* 32" x 32" format

**STOCKED IN USA**



Below: actual color varies, example is only representative



**Grout:** Laticrete Permacolor Select 24 Natural Grey  
**Thinset:** LHT Plus



## F-1 De-emphasized for new projects. Use for existing facilities.

**Series:** TechnoGrafite  
**Color:** Graphite  
**Finish:** Natural  
**Size:** 24" x 24" (nominal)  
**Product Code:**  
 AS.ASK151.2424  
**Thickness:**

**10 mm**

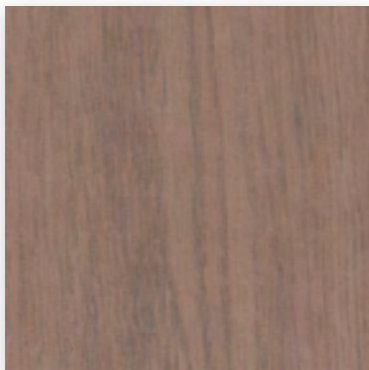
**STOCKED IN USA**



Below: actual color varies, example is only representative



**Grout:** Laticrete Permacolor Select 45 Raven  
**Thinset:** LHT Plus



## F-3 De-emphasized for new projects. Use for existing facilities.

**Series:** TechnoGrey  
**Color:** Teak  
**Finish:** Natural  
**Size:** 8" x 48",  
**Product Code:**  
 AS.ASKM7WY.824  
**Thickness:**

**10 mm**

**STOCKED IN USA**



Below: actual color varies, example is only representative



**Grout:** Laticrete Permacolor Select 30 Sand Beige  
**Thinset:** LHT Plus



## F-9 De-emphasized for new projects. Use for existing facilities.

**Series:** TechnoGrey  
**Color:** New Silver  
**Finish:** Natural  
**Size:** 24" x 24" **Thickness:**

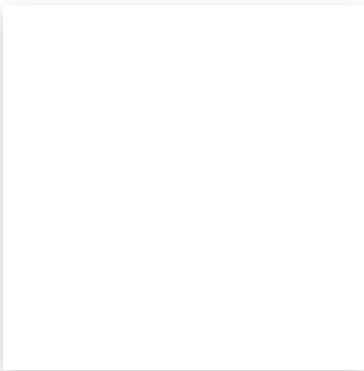
**10 mm**

Below: actual color varies, example is only representative



**Grout:** Laticrete Permacolor Select 90 Light Pewter  
**Thinset:** LHT Plus





## W-6

**Series:** Walls  
**Size:** 12" x 24" **Finish:** Satin  
**Color:** Simply White

- or -  
**Size:** 03"x 06" **Finish:** Glossy

**Color:** BrightWhite  
**Product Code(s):**  
AS.AW.1224SimplyWhite.Satin  
**Product Code:**  
AS.AW.0306.BrightWhite.Glossy



## W-10 (A)

**Series:** ShopWall  
**Color:** Granita Grey **Finish:** Satin  
**Size:** 8" x 8"



## W-10 (B)

**Series:** ShopWall  
**Color:** Anthracite Grey **Finish:** Satin  
**Size:** 8" x 8"

## STOCKED IN USA



Below: actual color varies, example is only representative



**Grout:** Laticrete Permacolor Select 44 Bright White  
**Thinset:** LHT Plus

## STOCKED IN USA



Below: actual color varies, example is only representative



**Grout:** Laticrete Permacolor 89 Smoke Grey  
**Thinset:** LHT Plus

## STOCKED IN USA



Below: actual color varies, example is only representative



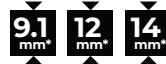
**Grout:** Laticrete Permacolor 89 Smoke Grey  
**Thinset:** LHT Plus





## F-8 Alloy Grey

**Series:** Driveseries!  
**Color:** Alloy Grey  
**Finish:** R12 Textured  
**Size:** 8" x 8" (nominal)  
**Product Code:**  
 AS.DS.0808.AG.R-12/ABC  
**Thicknesses:**



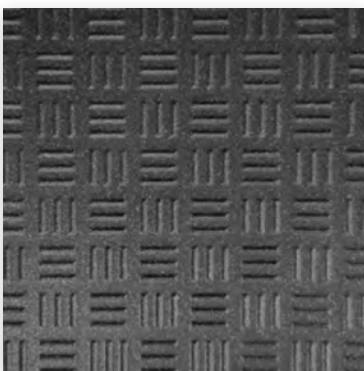
**STOCKED IN USA**



Below: actual color varies, example is only representative

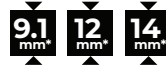


**Grout:** Laticrete Permacolor 89 Smoke Grey  
**Thinset:** LHT Plus



## F-8 Carbon Black

**Series:** Driveseries!  
**Color:** Carbon Black  
**Finish:** R12 Textured  
**Size:** 8" x 8" (nominal)  
**Product Code:**  
 AS.DS.0808.CB.R-12/ABC  
**Thicknesses:**



**STOCKED IN USA**



Below: actual color varies, example is only representative



**Grout:** Laticrete Permacolor 45 Raven  
**Thinset:** LHT Plus

# driveseries!

advanced surface technology

**9.1 mm\*** Stocked USA ■ Alloy Grey  
 Stocked USA ■ Carbon Black

**12 mm\*** Stocked EU ■ Alloy Grey  
 Stocked EU ■ Carbon Black

**14 mm\*** Standard 8-10 ■ Alloy Grey  
 Standard 8-10 ■ Carbon Black

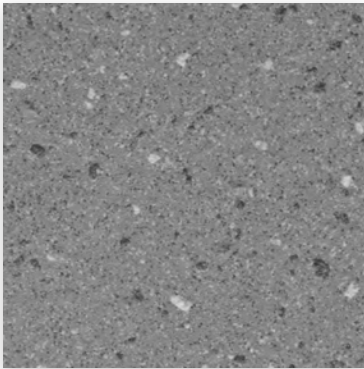
\* thickness tolerance is: (+) or (-) .5mm

### Material Availability - 8" x 8"

- **STOCKED USA**  
 Product stocked in USA warehouse.  
 1 week preparation + ground shipping.
- **STOCKED EU**  
 Product stocked at factory in EU.  
 1-2 week preparation + 4 week shipping.
- **STANDARD 8-10**  
 Standard production product.  
 8-10 week production + 4 week shipping.

If not available, lead-time is 6-8 weeks depending on your project location.



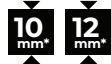


## F-8 Smoke Grey

**STOCKED IN USA**



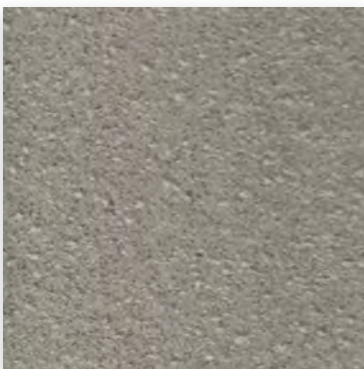
**Series:** Enviroshop  
**Color:** Smoke Grey  
**Size:** 12" x 12" (nominal)  
**Finish:** Textured  
**Product Code:**  
 AS.ES.1212.SG.BR.TX  
**Thicknesses:**



Below: actual color varies, example is only representative



**Grout:** Laticrete Permacolor 42 Platinum  
**Thinset:** LHT Plus



## F-8 Alloy Grey

**STOCKED IN USA**



**Series:** Enviroshop  
**Color:** Alloy Grey  
**Size:** 12" x 12" (nominal)  
**Finish:** Textured  
**Product Code:**  
 AS.ES.1212.AG.BR.TX  
**Thicknesses:**



Below: actual color varies, example is only representative



**Grout:** Laticrete Permacolor 89 Smoke Grey  
**Thinset:** LHT Plus

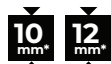


## F-8 Carbon Black

**STOCKED IN USA**



**Series:** Enviroshop  
**Color:** Carbon Black  
**Size:** 12" x 12" (nominal)  
**Finish:** Textured  
**Product Code:**  
 AS.ES.1212.CB.BR.TX  
**Thicknesses:**



Below: actual color varies, example is only representative



**Grout:** Laticrete Permacolor 45 Raven  
**Thinset:** LHT Plus



**enviroshop**

smarter, better workshops

A permanent enhanced porcelain technology floor tile and system for use in automotive workshop and climate controlled service drive environments.

For interior environments only.

### Material Availability - 12" x 12"



Stocked USA ■ Alloy Grey  
 Stocked USA ■ Smoke Grey  
 Stocked USA ■ Carbon Black



Standard 8-10 ■ Alloy Grey  
 Standard 8-10 ■ Smoke Grey  
 Standard 8-10 ■ Carbon Black

### ■ STOCKED USA

Product stocked in USA warehouse. 1 week preparation + ground (US) shipping.

### ■ STANDARD 8-10

Standard production product. 8-10 week production + ground (US) shipping.

If not available, lead-time is 6-8 weeks depending on your project location.

\* thickness tolerance is: (+) or (-) .5mm



## F-8 Light (Cefalu) Grey

**Series:** Clinkershop  
**Color:** Light (Cefalu) Grey  
**Finish:** SLR Shop Textured  
**Size:** 8" x 8"  
**Thickness:**



### STOCKED IN USA

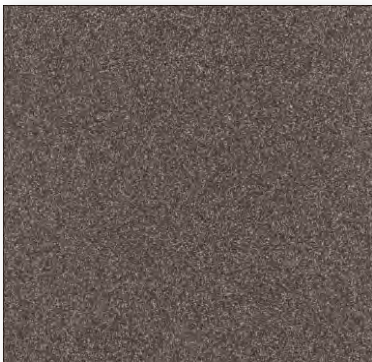


stocked in limited quantities, check with you AutoStone Audi program manager

Below: actual color varies, example is only representative



**Grout:** Laticrete Permacolor 89 Smoke Grey  
**Thinset:** LHT Plus



## F-8 Elba Black

**Series:** Clinkershop  
**Color:** Elba Black  
**Finish:** SLR Shop Textured  
**Size:** 8" x 8"  
**Thickness:**



### STOCKED IN USA



stocked in limited quantities, check with you AutoStone Audi program manager

Below: actual color varies, example is only representative



**Grout:** Laticrete Permacolor 45 Raven  
**Thinset:** LHT Plus

### Material Availability - 8" x 8"



R-11

Stocked USA	Light (Cefalu) Grey	Stocked USA	■ Light (Cefalu) Grey
Stocked USA	Elba Black	Stocked USA	■ Elba Black
Stocked EU	Light (Cefalu) Grey	Stocked EU	■ Light (Cefalu) Grey
Stocked EU	Elba Black	Stocked EU	■ Elba Black

#### STOCKED USA

Product stocked in USA warehouse. 1 week preparation + ground (US) shipping.

#### STOCKED EU

Product stocked at factory in EU. 1-2 week preparation + 4 week shipping.

\* thickness tolerance is: (+) or (-) .5mm



## Build with AutoStone.

AutoStone is the best choice for your Audi Architectural Terminal project. We are approved for: showroom, service drive and shop floor materials. Select AutoStone for your Audi brand compliant dealership tile finish.

One provider for your entire facility. Go with the experts, select AutoStone.  
All materials are built and manufactured to build better Audi dealerships!

## Warranty

AutoStone offers a tile materials defect warranty and Laticrete offers a 5-year setting materials system warranty. AutoStone offers an installed warranty for installed projects.

*AutoStone does not warrant the labor services of third party contractors.  
See warranties for specifics.*

## Installation

See AutoStone recommended 09300 specifications for thinset standards on concrete substrate and AutoStone recommended installation standards.

## Contact Information

**Email:** [audi@autostoneusa.com](mailto:audi@autostoneusa.com)

**Phone:** 214-393-4875 (Audi Line)

