



Honda Tile Guide

2021 Edition

Honda Brand Compliant Program
AutoStoneUSA.com/Honda

brightfinish
ultra-cleanable technology

AutoStoneUSA.com

© 2021 AutoStone Floor Systems, All Rights Reserved.



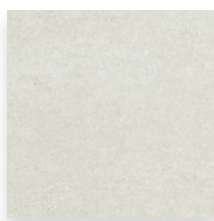


HONDA

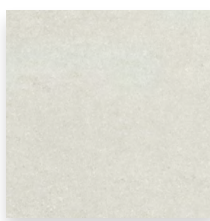
Contact Information

Email: jasper@autostoneusa.com

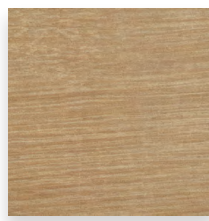
Phone: 214-393-4875 (Main Phone)



CT-1



CT-1



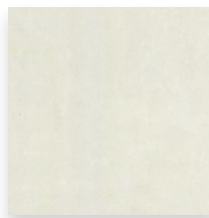
CT-2



CT-4



CT-5



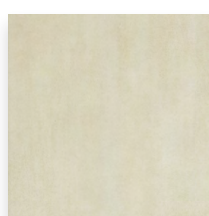
CT-6



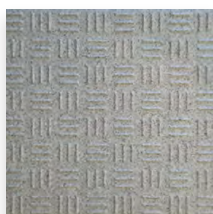
CT-7



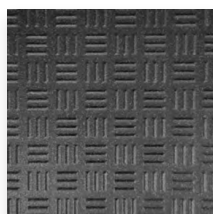
CT-8



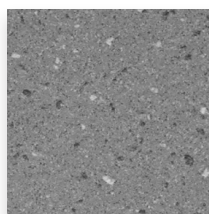
CT-9



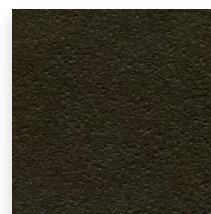
CT-10
high traction surface



CT-11
high traction surface



CT-10 (option)
medium traction surface



CT-11 (option)
medium traction surface



CT-1

Series: Clean.Tech

Color: i.White

Finish: R-10 | Brightfinish

Size: 24" x 24" (nominal)

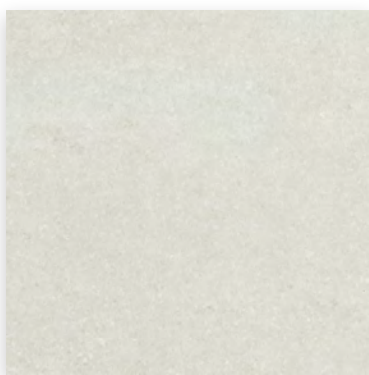
brightfinish
ultra-cleanable technology

Below: actual color varies, example is only representative



Grout: Laticrete Permacolor Select 18 Sauterne

Thinset: LHT Plus



CT-1

Series: iPremiere

Color: Polished

Finish: R-10 | Brightfinish

Size: 24" x 24" (nominal)

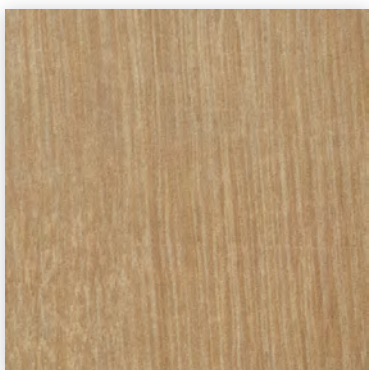
brightfinish
ultra-cleanable technology

Below: actual color varies, example is only representative



Grout: Laticrete Permacolor Select 18 Sauterne

Thinset: LHT Plus



CT-6

Series: iWood

Color: Amberwood

Finish: Natural | Matte

Size: 6" x 32" (nominal)

Below: actual color varies, example is only representative



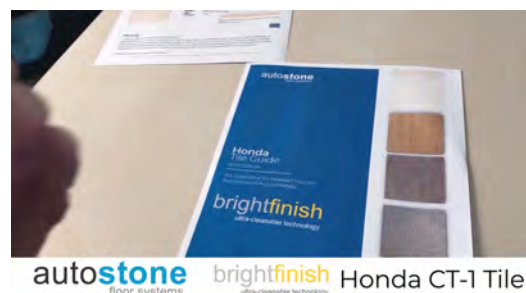
Grout: Laticrete Permacolor Select 81 Buttercream

Thinset: LHT Plus

AutoStone CT-1 (Honda Showroom) Tiles with Brightfinish Reduce Stains and Clean Easier

The brightfinish surface aids them in their cleaning practices and enhances your showroom appearance. AutoStone tile is much easier to clean for Honda dealers. AutoStone brightfinish eliminates* concerns with your tile showing haze, dirt, grime, etc., (*with proper cleaning practices). Tile with brightfinish does easily stain, especially with tire-bright, or similar tire dressing materials.

The result? Better appearing Honda stores, happier dealers!



Click the image above for a Brightfinish demonstration





CT-4

Series: Clean.Tech

Color: Beige

Finish: R-10 | Brightfinish

Size(s):

12" x 12" (nominal)

12" x 24" (nominal)

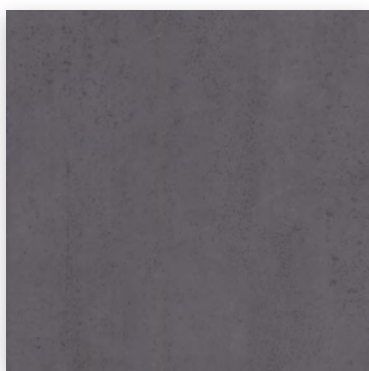
brightfinish
ultra-cleanable technology

Below: actual color varies, example is only representative



Grout: Laticrete Permacolor Select 03 Silk

Thinset: LHT Plus



CT-5

Series: Clean.Tech

Color: Anthracita (Charcoal)

Finish: R-10 | Brightfinish

Size: 24" x 24" (nominal)

brightfinish
ultra-cleanable technology

Below: actual color varies, example is only representative



Grout: Laticrete Permacolor Select 45 Raven

Thinset: LHT Plus



CT-6

Series: Premier.6

Color: Blanco

Finish: Natural | Matte

Size: 12" x 24" (nominal)

Below: actual color varies, example is only representative



Grout: Laticrete Permacolor Select 44 Bright White

Thinset: LHT Plus

Build with AutoStone.

Our program supports Subaru dealers with the highest quality, most affordable and comprehensive floor tile system for your dealership project. Affordable, high-quality, and easy to do business with are what you will experience with AutoStone. Call us today to support your project.

Installation

See AutoStone recommended 09300 specifications for thinset standards on concrete substrate and AutoStone recommended installation standards.





CT-7

Series: Enviroshop

Color: Alloy Grey

Size:

12" x 12" U.S. Nominal Dimensions

11 7/8" x 11 7/8" Actual Dimensions

**Dimension may vary within (+) or (-) 2mm in sizing*

Finish: Textured | Medium Traction

Brightfinish

Thicknesses: 10mm 12mm

Below: actual color varies, example is only representative

Grout: Laticrete Permacolor 89 Smoke Grey

Thinset: LHT Plus

brightfinish
ultra-cleanable technology



CT-8

Series: Clean.Tech

Color: Beige

Finish: R-10 | Brightfinish

Size: 24" x 24" (nominal)

brightfinish
ultra-cleanable technology

Below: actual color varies, example is only representative

Grout: Laticrete Permacolor Select 03 Silk

Thinset: LHT Plus



CT-9

Series: Clean.Tech

Color: Beige

Finish: R-10 | Brightfinish

Size: 24" x 24" (nominal)

brightfinish
ultra-cleanable technology

Below: actual color varies, example is only representative

Grout: Laticrete Permacolor Select 03 Silk

Thinset: LHT Plus

Warranty

AutoStone offers a tile materials defect warranty.

AutoStone offers an installation warranty when warranty services are contracted through AutoStone. Length of Warranty is dependent upon contracted term. AutoStone does not offer any warranty of any kind when a third party installer is involved except the tile materials defect warranty. AutoStone has put together a unique package of products with Laticrete to provide contractors a 10 year warranty from Laticrete, when the purchase the correct materials directly through AutoStone.

See Warranties on our website for specifics.





CT-10

Series: Driveseries!

Color: Alloy Grey

Finish: R-12 Textured | High Traction

Brightfinish

Size:

8" x 8" U.S. Nominal Dimensions

7 7/8" x 7 7/8" Actual Dimensions

**Dimension may vary within (+) or (-) 2mm in sizing*

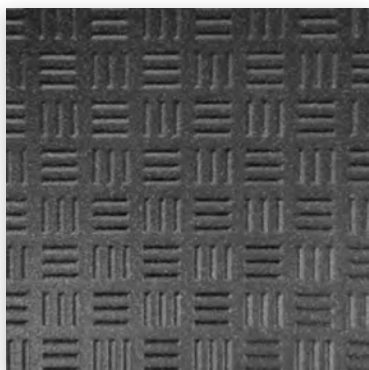
Thicknesses: 9.1 mm 12 mm 14 mm

Below: actual color varies, example is only representative

Grout: Laticrete Permacolor 89 Smoke Grey

Thinset: LHT Plus

brightfinish
ultra-cleanable technology



CT-11

Series: Driveseries!

Color: Carbon Black

Finish: R-12 Textured | High Traction

Brightfinish

Size:

8" x 8" U.S. Nominal Dimensions

7 7/8" x 7 7/8" Actual Dimensions

**Dimension may vary within (+) or (-) 2mm in sizing*

Thicknesses: 9.1 mm 12 mm 14 mm

Below: actual color varies, example is only representative

Grout: Laticrete Permacolor 45 Raven

Thinset: LHT Plus

brightfinish
ultra-cleanable technology

driveseries!
advanced surface technology

Material Availability - 8" x 8"

** equals U.S. Nominal Dimension. 7 7/8" x 7 7/8" Actual Dimensions. Dimension may vary within (+) or (-) 2mm in sizing.*

9.1 mm

Stocked USA ■ Alloy Grey
Stocked USA ■ Carbon Black

12 mm

Stocked EU ■ Alloy Grey
Stocked EU ■ Carbon Black

14 mm

Standard 8-10 ■ Alloy Grey
Standard 8-10 ■ Carbon Black

■ STOCKED USA

Product stocked in USA warehouse.
1 week preparation + ground shipping.

■ STOCKED EU

Product stocked at factory in EU.
1-2 week preparation + 4 week shipping.

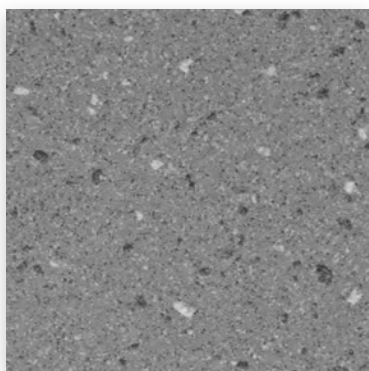
■ STANDARD 8-10

Standard production product.
8-10 week production + 4 week shipping.

If not available, lead-time is 6-8 weeks depending on your project location.

** thickness tolerance is: (+) or (-) .5mm*





CT-10

Series: Enviroshop

Color: Smoke Grey

Size:

12" x 12" U.S. Nominal Dimensions

11 7/8" x 11 7/8" Actual Dimensions

**Dimension may vary within (+) or (-) 2mm in sizing*

Finish: Textured | Medium Traction

Brightfinish

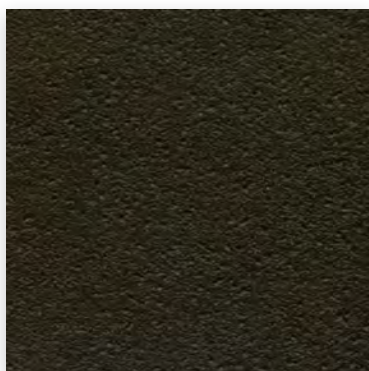
Thicknesses: 10 mm* 12 mm*

Below: actual color varies, example is only representative

Grout: Laticrete Permacolor 42 Platinum

Thinset: LHT Plus

brightfinish
ultra-cleanable technology



CT-11

Series: Enviroshop

Color: Carbon Black

Size:

12" x 12" U.S. Nominal Dimensions

11 7/8" x 11 7/8" Actual Dimensions

**Dimension may vary within (+) or (-) 2mm in sizing*

Finish: Textured | Medium Traction

Brightfinish

Thicknesses: 10 mm* 12 mm*

Below: actual color varies, example is only representative

Grout: Laticrete Permacolor 45 Raven

Thinset: LHT Plus

brightfinish
ultra-cleanable technology

enviroshop

smarter, better workshops

Material Availability - 12" x 12"

**equals U.S. Nominal Dimension. 11 7/8" x 11 7/8" Actual Dimensions. Dimension may vary within (+) or (-) 2mm in sizing.*



Stocked USA
Stocked USA
Stocked USA

Alloy Grey
Smoke Grey
Carbon Black

STOCKED USA

Product stocked in USA warehouse. 1 week preparation + ground (US) shipping.



Standard 8-10
Standard 8-10
Standard 8-10

Alloy Grey
Smoke Grey
Carbon Black

STANDARD 8-10

Standard production product. 8-10 week production + ground (US) shipping.

If not available, lead-time is 6-8 weeks depending on your project location.

** thickness tolerance is: (+) or (-) .5mm*

autostone
floor systems

HONDA

Contact Information

Email: jasper@autostoneusa.com

Phone: 214-393-4875 (Main Phone)



Driveseries

*Driveseries high texture surface with brightfinish is warranted to > .42 DCOF (dynamic coefficient of friction). We do not warrant Driveseries, or any tile as STF (slip, trip, and fall) proof, as no tile or floor meets that standard. The ANSI A326.3 standard is an evaluation of a hard surface flooring material under known conditions using a standardized sensor material prepared according to a specific protocol.

"The presence on installed hard surface floor materials of water (including standing water as can exist on floors which are not properly sloped for drainage or on exterior flooring surfaces immediately after a rain storm or on which snow is melting), oil, grease, and/or any other elements which reduce traction, creates slippery conditions where the risk of a slip cannot be completely eliminated. Applications with exposure to such elements require extra caution in product selection, use, and maintenance."

Enviroshop

*Enviroshop medium texture surface with brightfinish is warranted to > .42 DCOF (dynamic coefficient of friction). We do not warrant Enviroshop, or any tile as STF (slip, trip, and fall) proof, as no tile or floor meets that standard. The ANSI A326.3 standard is an evaluation of a hard surface flooring material under known conditions using a standardized sensor material prepared according to a specific protocol.

"The presence on installed hard surface floor materials of water (including standing water as can exist on floors which are not properly sloped for drainage or on exterior flooring surfaces immediately after a rain storm or on which snow is melting), oil, grease, and/or any other elements which reduce traction, creates slippery conditions where the risk of a slip cannot be completely eliminated. Applications with exposure to such elements require extra caution in product selection, use, and maintenance."



HONDA

Contact Information

Email: jasper@autostoneusa.com

Phone: 214-393-4875 (Main Phone)

