



## Kia 2.0America Tile Guide

*2022Edition*

Kia Gallery Program  
[AutoStoneUSA.com/Kia](http://AutoStoneUSA.com/Kia)



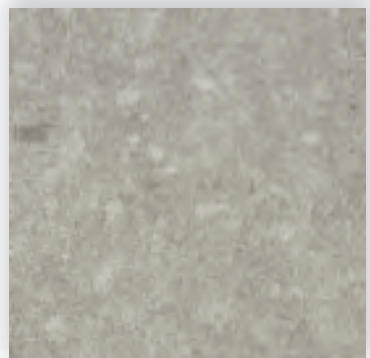
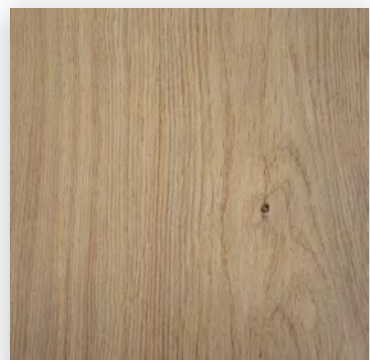
**Made in USA**

Ask About  
**AutoStoneUSA**  
Guaranteed Pricing  
and  
Guaranteed Delivery

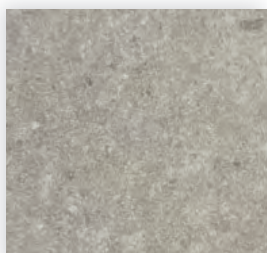
**Supply Chain**



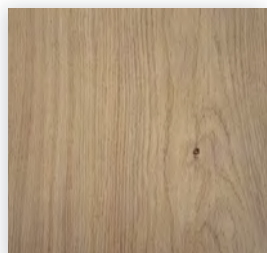
**Strong**



**autostone**  
floor systems



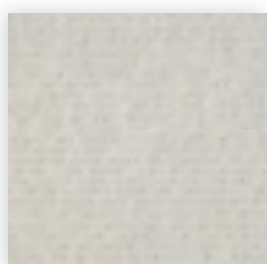
T-1



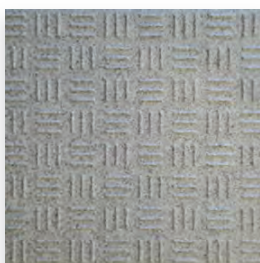
T-2



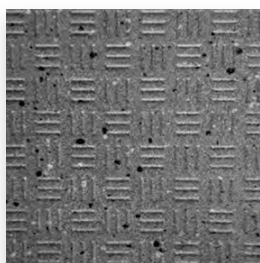
T-3



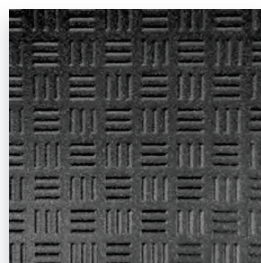
T-4



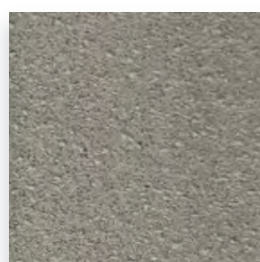
T-6



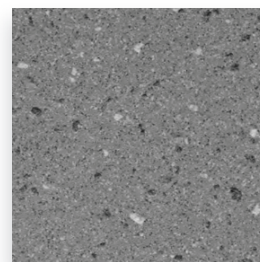
T-6



T-7



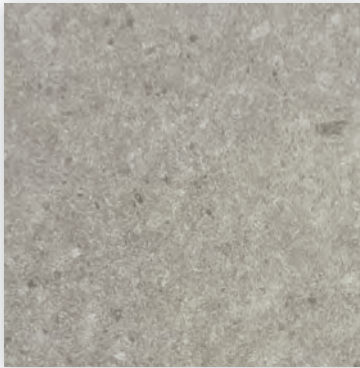
T-6



T-6

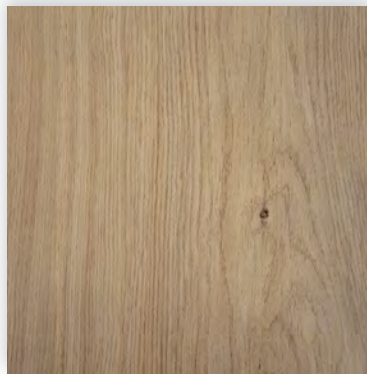


T-7



## T-1

**Series:** Concrete  
**Color:** Smoke  
**Finish:** Natural | Honed  
**Code:** AS.11036373232NH  
**Size:** 32" x 32" (nominal)



## T-2

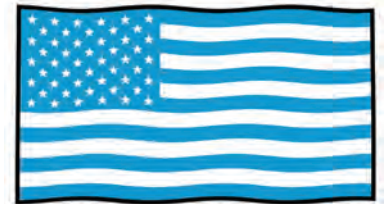
**Series:** Amberwood Plank  
**Color:** Maple Harvest  
**Finish:** Natural  
**Size:** 06" x 32" (nominal)  
**Size:** 08" x 48" (nominal)



**AutoStone Kia 2.0 tiles**  
 T-1, T-2 are the same thickness  
 (10 mm thick)



**Other tile option mixes different**  
 thicknesses of materials.



**AutoStone Kia 2.0 tiles**  
 (T-1, T-2, T-3, T-4, T-5, T-6, and T-7)  
 are USA manufactured



The **MOST** affordable  
 tile choice!



Easy to work with,  
 helpful & supportive.

## Warranty

AutoStone offers a tile materials defect warranty. AutoStone offers an installation warranty when warranty services are contracted through AutoStone. Length of Warranty is dependent upon contracted term. AutoStone does not offer any warranty of any kind when a third party installer is involved except the tile materials defect warranty. AutoStone has put together a unique package of products with Laticrete to provide contractors a 10 year warranty from Laticrete, when the purchase the correct materials directly through AutoStone. See *Warranties on our website for specifics.*

## Build with AutoStone.

Our program supports Kia dealers with the highest quality, most affordable and comprehensive floor tile system for your dealership project. Affordable, high-quality, and easy to do business with are what you will experience with AutoStone. Call us today to support your project.

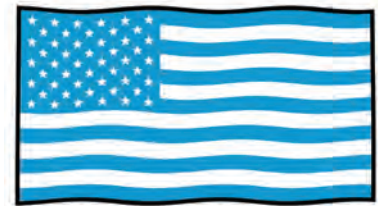
## Installation

See AutoStone recommended 09300 specifications for thinset standards on concrete substrate and AutoStone recommended installation standards.



## T-3

**Series:** Urban Walls  
**Color:** Pure  
**Finish:** Glossy  
**Code:** AS.1102522.UW.PU.Glossy  
**Size:** 3" x 12" (nominal)



AutoStone Kia 2.0 tiles  
 (T-1, T-2, T-3, T-4, T-5, T-6, and T-7)  
 are USA manufactured



## T-4

**Series:** Urban Walls  
**Color:** Pearl  
**Finish:** Lineal Chisel  
**Code:** 1103644.312BNMT  
**Size:** 3" x 12" (nominal)

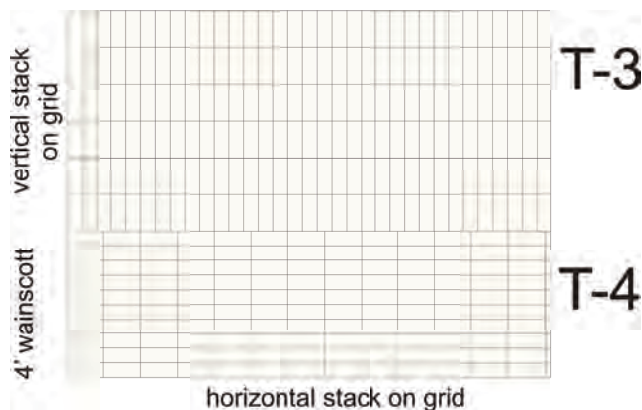


The **MOST** affordable  
 tile choice!



Easy to work with,  
 helpful & supportive.

### Bathroom wall installation grid:



#### Note to flooring contractor:

- \* Kia 2.0 design intent reflects this design:
- \* T-3 tile is a GLOSSY finish and to be vertical stack pattern as shown to left. Stack to be done on-grid and installed in stacked pattern as shown to left.
- \* T-4 tile is a chiseled linear surface and is to be installed with a horizontal pattern as shown to left.

Follow architects plans and instructions. If there is a discrepancy with plans, please send an email to: [kia@autostoneusa.com](mailto:kia@autostoneusa.com).



## T-6 Alloy Grey

**Series:** Driveseries!

**Color:** Alloy Grey

**Finish:** R12 Textured

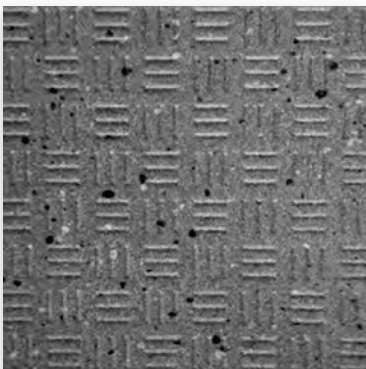
**Size:**

8" X 8" U.S. Nominal Dimensions

7 7/8" X 7 7/8" Actual Dimensions

*\*Dimension may vary within (+) or (-) 2mm in sizing*

**Thicknesses:** 9.1



## T-6 Smoke Grey

**Series:** Driveseries!

**Color:** Smoke Grey

**Finish:** R12 Textured

**Size:**

8" X 8" U.S. Nominal Dimensions

7 7/8" X 7 7/8" Actual Dimensions

*\*Dimension may vary within (+) or (-) 2mm in sizing*

**Thicknesses:** 9.1



## T-7 Carbon Black

**Series:** Driveseries!

**Color:** Carbon Black

**Finish:** R12 Textured

**Size:**

8" X 8" U.S. Nominal Dimensions

7 7/8" X 7 7/8" Actual Dimensions

*\*Dimension may vary within (+) or (-) 2mm in sizing*

**Thicknesses:** 9.1



**driveseries!**  
advanced surface technology

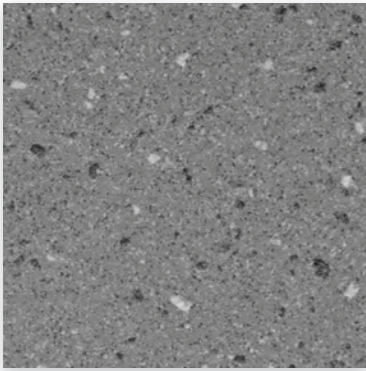
- Stocked USA ■ Alloy Grey
- Stocked USA ■ Smoke Grey
- Stocked USA ■ Carbon Black

\* thickness tolerance is: (+) or (-) .5mm

### Material Availability - 8" x 8"

*\* equals U.S. Nominal Dimension, 7 7/8" x 7 7/8" Actual Dimensions. Dimension may vary within (+) or (-) 2mm in sizing.*

- STOCKED USA ■
- Product stocked in USA warehouse.
- 1 week preparation + ground shipping.



## T-6 Smoke Grey

**Series:** Enviroshop

**Color:** Smoke Grey

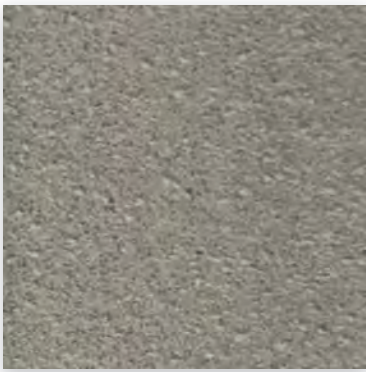
**Size:**

12" x 12" U.S. Nominal Dimensions

11 7/8" x 11 7/8" Actual Dimensions

*\*Dimension may vary within (+) or (-) 2mm in sizing*

**Finish:** Textured



## T-6 Alloy Grey

**Series:** Enviroshop

**Color:** Alloy Grey

**Size:**

12" x 12" U.S. Nominal Dimensions

11 7/8" x 11 7/8" Actual Dimensions

*\*Dimension may vary within (+) or (-) 2mm in sizing*

**Finish:** Textured



## T-7 Carbon Black

**Series:** Enviroshop

**Color:** Carbon Black

**Size:**

12" x 12" U.S. Nominal Dimensions

11 7/8" x 11 7/8" Actual Dimensions

*\*Dimension may vary within (+) or (-) 2mm in sizing*

**Finish:** Textured



### Material Availability - 12" x 12"

*\*equals U.S. Nominal Dimension. 11 7/8" x 11 7/8" Actual Dimensions. Dimension may vary within (+) or (-) 2mm in sizing.*



Made in USA

Made in USA

Made in USA

■ Alloy Grey

■ Smoke Grey

■ Carbon Black

■ **MADE and STOCKED IN THE USA**

Product stocked in USA warehouse. 1 week preparation + ground (US) shipping.

\* thickness tolerance is: (+) or (-) .5mm

## Thinset Installation Method (For Floor Tiles)

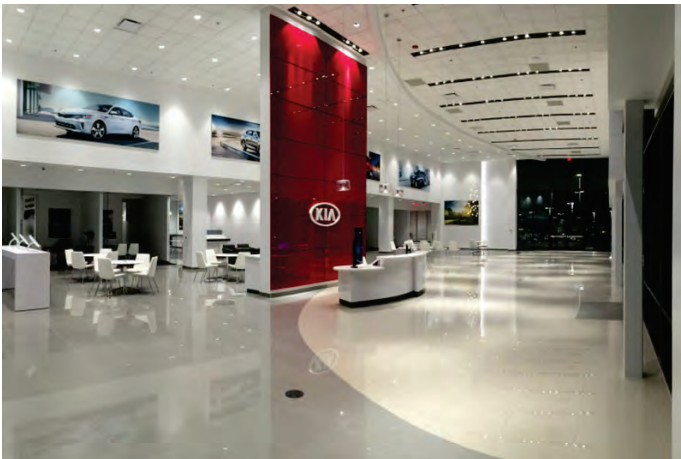
- Thinset mortar installation minimum. ANSI A118.4 (polymer modified). Recommended 100% coverage for tile.
- Grout to be a high-performance system with stain resistant properties. Installation to be 1/8" to 3/16" width.
- Grout specification minimum: ANSI A118.7.
- See AutoStone supplied setting materials for actual product codes and grout color.

## Questions & Information

Email: [kia@autostoneusa.com](mailto:kia@autostoneusa.com)

Phone: 214-393-4875 (Kia Line)

AutoStone has a team that supports your Kia project. If your call is not answered immediately, you will receive a return call no later than one business day. All emails are monitored and will be responded to quickly. We are here to support your project!



### Contact Information

Email: [kia@autostoneusa.com](mailto:kia@autostoneusa.com)

Phone: 214-393-4875 (Main Phone)