

autostone
floor systems

CDJR Tile Guide

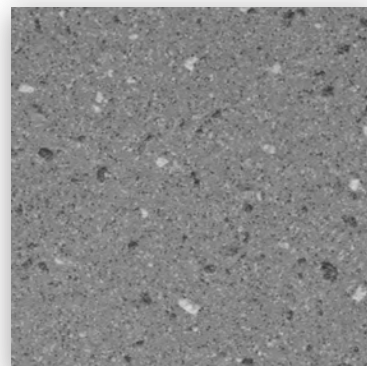
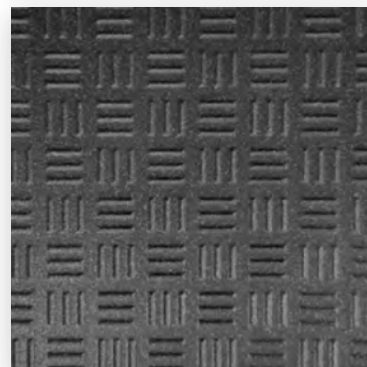
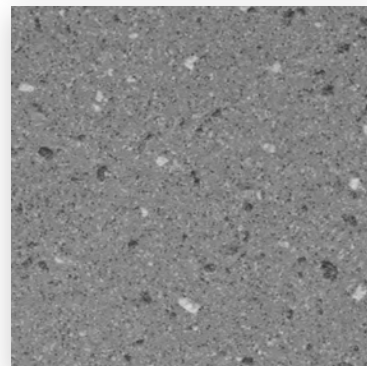
2022 Edition

CDJR Tile Program
AutoStoneUSA.com/CDJR

brightfinish
ultra-cleanable technology

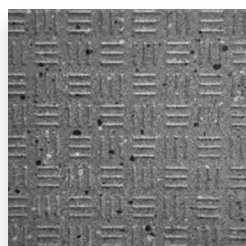
AutoStoneUSA.com

© 2022 AutoStone Floor Systems, All Rights Reserved.

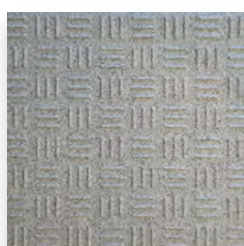




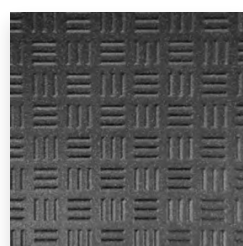
CDJR



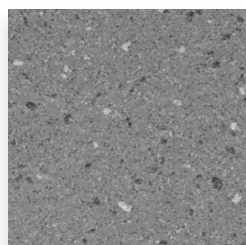
Smoke Grey



Alloy Grey



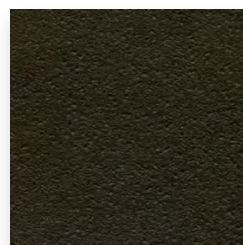
Carbon Black



Smoke Grey



Alloy Grey



Carbon Black

Contact Information

Email: hello@autostoneusa.com

Phone: 214-393-4875 (Main Phone)



Alloy Grey

Series: Driveseries!
Color: Alloy Grey
Finish: R12 Textured
Size:
 8" X 8" U.S. Nominal Dimensions
 7 7/8" X 7 7/8" Actual Dimensions
**Dimension may vary within (+) or (-) 2mm in sizing*
Thicknesses:

STOCKED IN USA

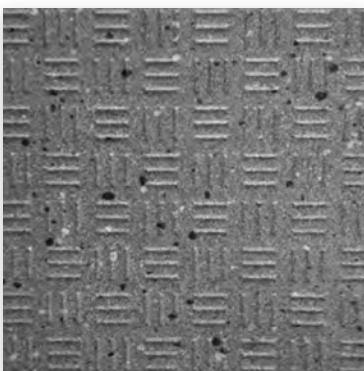
Below: actual color varies, example is only representative



Grout: Laticrete Permacolor 89 Smoke Grey

Thinset: LHT Plus

brightfinish
 ultra-cleanable technology



Smoke Grey

Series: Driveseries!
Color: Smoke Grey
Finish: R12 Textured
Size:
 8" X 8" U.S. Nominal Dimensions
 7 7/8" X 7 7/8" Actual Dimensions
**Dimension may vary within (+) or (-) 2mm in sizing*
Thicknesses:

STOCKED IN USA

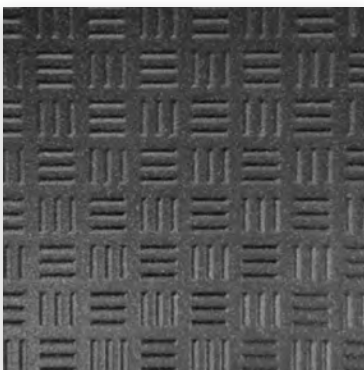
Below: actual color varies, example is only representative



Grout: Laticrete Permacolor 42 Platinum

Thinset: LHT Plus

brightfinish
 ultra-cleanable technology



Carbon Black

Series: Driveseries!
Color: Carbon Black
Finish: R12 Textured
Size:
 8" X 8" U.S. Nominal Dimensions
 7 7/8" X 7 7/8" Actual Dimensions
**Dimension may vary within (+) or (-) 2mm in sizing*
Thicknesses:

STOCKED IN USA

Below: actual color varies, example is only representative



Grout: Laticrete Permacolor 45 Raven

Thinset: LHT Plus

brightfinish
 ultra-cleanable technology

driveseries!
 advanced surface technology

Stocked USA Alloy Grey
 Stocked USA Smoke Grey
 Stocked USA Carbon Black

Stocked EU Alloy Grey
 Stocked EU Smoke Grey
 Stocked EU Carbon Black

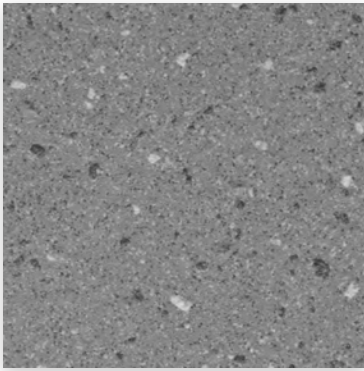
Standard 8-10 Alloy Grey
 Standard 8-10 Smoke Grey
 Standard 8-10 Carbon Black

Material Availability - 8" x 8"

* equals U.S. Nominal Dimension. 7 7/8" x 7 7/8" Actual Dimensions. Dimension may vary within (+) or (-) 2mm in sizing.

STOCKED USA
 Product stocked in USA warehouse.
 1 week preparation + ground shipping.





Smoke Grey

Series: Enviroshop

Color: Smoke Grey

Size:

12" x 12" U.S. Nominal Dimensions

11 7/8" x 11 7/8" Actual Dimensions

**Dimension may vary within (+) or (-) 2mm in sizing*

Finish: Textured

Thicknesses: 9.5 mm*

MADE IN USA



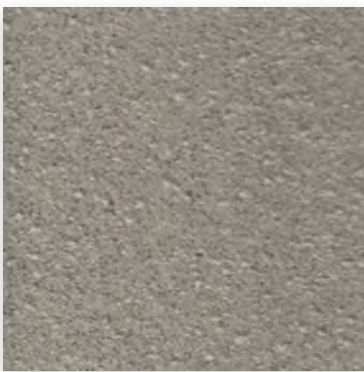
Below: actual color varies, example is only representative



Grout: Laticrete Permacolor 42 Platinum

Thinset: LHT Plus

brightfinish
ultra-cleanable technology



Alloy Grey

Series: Enviroshop

Color: Alloy Grey

Size:

12" x 12" U.S. Nominal Dimensions

11 7/8" x 11 7/8" Actual Dimensions

**Dimension may vary within (+) or (-) 2mm in sizing*

Finish: Textured

Thicknesses: 9.5 mm*

MADE IN USA



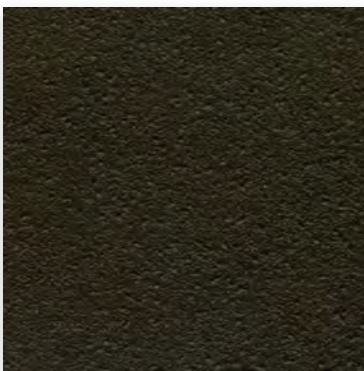
Below: actual color varies, example is only representative



Grout: Laticrete Permacolor 89 Smoke Grey

Thinset: LHT Plus

brightfinish
ultra-cleanable technology



Carbon Black

Series: Enviroshop

Color: Carbon Black

Size:

12" x 12" U.S. Nominal Dimensions

11 7/8" x 11 7/8" Actual Dimensions

**Dimension may vary within (+) or (-) 2mm in sizing*

Finish: Textured

Thicknesses: 9.5 mm*

MADE IN USA



Below: actual color varies, example is only representative



Grout: Laticrete Permacolor 45 Raven

Thinset: LHT Plus

brightfinish
ultra-cleanable technology

enviroshop

smarter, better workshops

Material Availability - 12" x 12"

- Stocked USA

 Alloy Grey
 Smoke Grey
 Carbon Black

STOCKED USA

Product stocked in USA warehouse.
1 week preparation + ground (US) shipping.

* thickness tolerance is: (+) or (-) .5mm

Product Use Category 4.1.2 Interior, Wet Plus (IW+)

Evaluate for interior use in automotive workshop and service drive environments with high speed doors and tech locker rooms. Enviroshop is MEDIUM TRACTION rated surface. For interior applications, with good drainage. Floors walked on when wet if level, clean, maintained and free of standing water or other contaminants. Should be cleaned with frequent maintenance to keep clean.

DCOF

Meets and exceeds .50 DCOF rating as required for ANSI A326 4.1.3 (IW+)



Build with AutoStone.

Our program supports CDJR dealers with the highest quality, most affordable and comprehensive floor tile system for your dealership project. Affordable, high-quality, and easy to do business with are what you will experience with AutoStone. Call us today to support your project.

Warranty

AutoStone offers a tile materials defect warranty.

AutoStone offers an installation warranty when warranty services are contracted through AutoStone. Length of Warranty is dependent upon contracted term. AutoStone does not offer any warranty of any kind when a third party installer is involved except the tile materials defect warranty. AutoStone has put together a unique package of products with Laticrete to provide contractors a 10 year warranty from Laticrete, when the purchase the correct materials directly through AutoStone.

See Warranties on our website for specifics.

Installation

See AutoStone recommended 09300 specifications for thinset standards on concrete substrate and AutoStone recommended installation standards.

