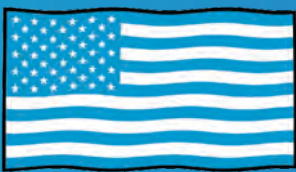


# Audi Tile Guide

*2022 Edition*

Audi Architectural Terminal Program  
[AutoStoneUSA.com/Audi](https://AutoStoneUSA.com/Audi)



**STOCKED IN  
AMERICA**



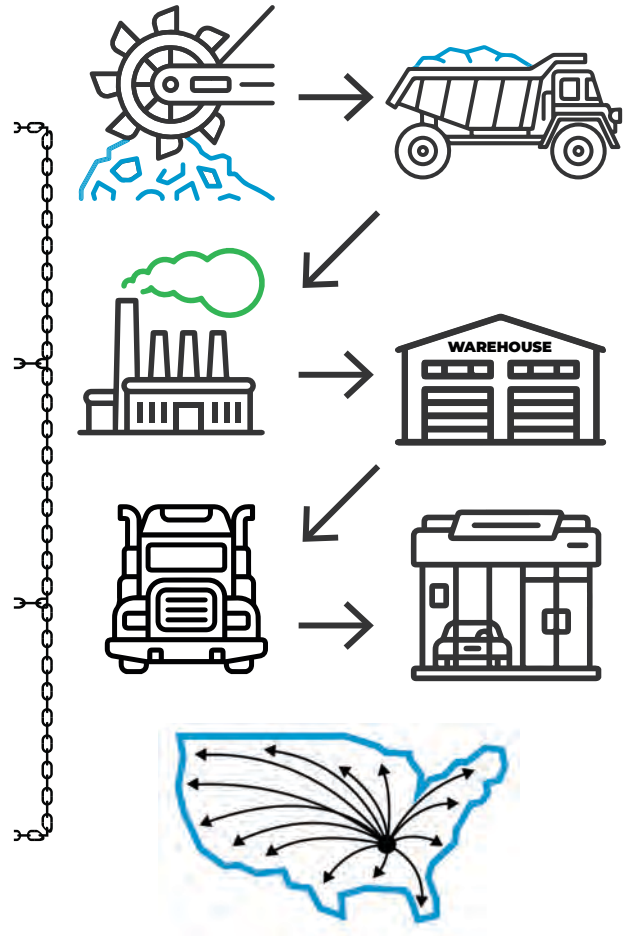
**SUPPLY CHAIN  
STRONG**



# Q2KD

## QUARRY TO KILN DISTRIBUTION MODEL

- 1** **LOCALLY SOURCED & LOCALLY QUARRIED**
  - ✓ Elimination of trans-ocean shipping
  - ✓ US jobs, shorter supply chain
- 2** **DOMESTICALLY PRODUCED & LOCALLY WAREHOUSED**
  - ✓ Less shipping
  - ✓ Reduced carbon footprint
- 3** **CONSOLIDATED SHIPPING DIRECT TO YOUR DEALERSHIP**
  - ✓ Eliminates distribution shipping
  - ✓ Reduces use of fossil fuel
- 4** **DOMESTICALLY PRODUCED SMARTER & EFFICIENT DISTRIBUTION**
  - ✓ Better for the environment
  - ✓ Saves you money





## F-4 NEW showroom tile - for all new projects!

**Series:** Silverstone


**Color:** Taupe

**Finish:** Honed | Natural

**Size:** (U.S. Nominal Dimensions)

32" x 32"

24" x 24" special order

**Thickness:**  32" x 32" format



**STOCKED IN USA**

Below: actual color varies, example is only representative



**Grout:** Laticrete Permacolor Select 24 Natural Grey

**Thinset:** LHT Plus



## F-1 De-emphasized for new projects. Use for existing facilities.

**Series:** TechnoGrafito

**Color:** Graphite

**Finish:** Natural

**Size:** 24" x 24" (U.S. Nominal Dimensions)

**Product Code:**

AS.ASK151.2424

**Thickness:** 



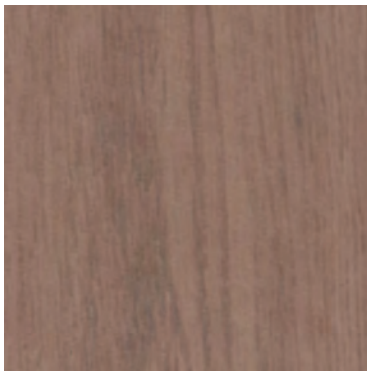
**STOCKED IN USA**

Below: actual color varies, example is only representative



**Grout:** Laticrete Permacolor Select 45 Raven

**Thinset:** LHT Plus



## F-3 De-emphasized for new projects. Use for existing facilities.

**Series:** TechnoGrey

**Color:** Teak

**Finish:** Natural

**Size:** 8" x 48" (U.S. Nominal Dimensions)

**Product Code:**

AS.ASKM7WY.824

**Thickness:** 



**STOCKED IN USA**

Below: actual color varies, example is only representative



**Grout:** Laticrete Permacolor Select 30 Sand Beige

**Thinset:** LHT Plus



## F-9 De-emphasized for new projects. Use for existing facilities.

**Series:** TechnoGrey

**Color:** New Silver

**Finish:** Natural

**Size:** 24" x 24" (U.S. Nominal Dimensions)

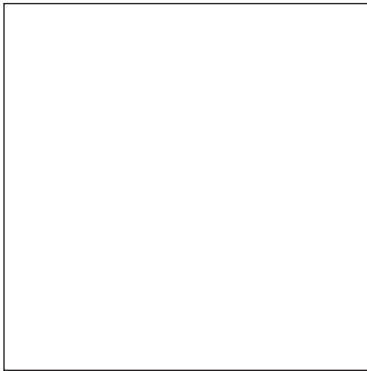
**Thickness:** 

Below: actual color varies, example is only representative



**Grout:** Laticrete Permacolor Select 90 Light Pewter

**Thinset:** LHT Plus



## Tech Locker Walls

**Series:** ShopWalls!

**Color:** Taupe

**Finish:** Satin

**Size:** 12" x 24"

(U.S. Nominal Dimensions)

**Size:** 03" x 06"

(U.S. Nominal Dimensions)

**Color:** BrightWhite

**Finish:** Glossy



**STOCKED IN USA**

Below: actual color varies, example is only representative



**Grout:** Laticrete Permacolor Select 44 Bright White

**Thinset:** LHT Plus



## Tech Locker Walls

**Series:** ShopWalls!

**Color:** Stormy Grey

**Finish:** Glossy

**Size:** 12" x 24" (U.S. Nominal Dimensions)



**STOCKED IN USA**

Below: actual color varies, example is only representative



**Grout:** Laticrete Permacolor 89 Smoke Grey

**Thinset:** LHT Plus



## Workshop & Tech Walls

**Series:** ShopWalls!

**Color:** Granita Grey

**Finish:** Satin

**Size:** 8" x 8" (U.S. Nominal Dimensions)



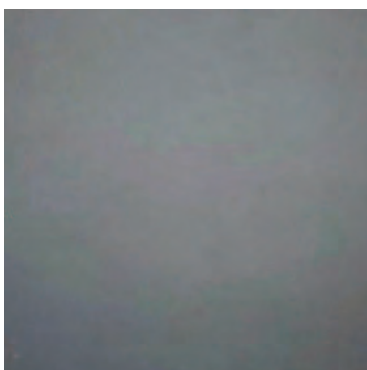
**STOCKED IN USA**

Below: actual color varies, example is only representative



**Grout:** Laticrete Permacolor 89 Smoke Grey

**Thinset:** LHT Plus



## Workshop & Tech Walls

**Series:** ShopWalls!

**Color:** Anthracite Grey

**Finish:** Satin

**Size:** 8" x 8" (U.S. Nominal Dimensions)



**STOCKED IN USA**

Below: actual color varies, example is only representative



**Grout:** Laticrete Permacolor 89 Smoke Grey

**Thinset:** LHT Plus





## F-8 Alloy Grey

Series: [Driveseries](#)  
 Color: Alloy Grey  
 Finish: Brightfinish | R12 Textured  
 Surface: High Traction  
 Size: 8" x 8" (U.S. Nominal Dimensions)

Thickness: 9.1 mm

**driveseries!** **brightfinish**  
advanced surface technology ultra-cleanable technology



STOCKED IN USA

Below: actual color varies, example is only representative



Grout: Laticrete Permacolor 89 Smoke Grey  
 Thinset: LHT Plus



## F-8 Carbon Black

Series: [Driveseries](#)  
 Color: Carbon Grey  
 Finish: Brightfinish | R12 Textured  
 Surface: High Traction  
 Size: 8" x 8" (U.S. Nominal Dimensions)

Thickness: 9.1 mm

**driveseries!** **brightfinish**  
advanced surface technology ultra-cleanable technology



STOCKED IN USA

Below: actual color varies, example is only representative



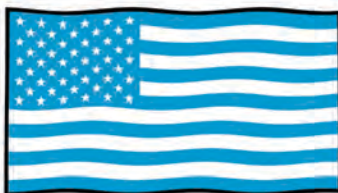
Grout: Laticrete Permacolor 89 Smoke Grey  
 Thinset: LHT Plus

**driveseries!**  
advanced surface technology

- Stocked USA ■ Alloy Grey
- Stocked USA ■ Carbon Black

## Material Availability

■ **STOCKED USA**  
 Product stocked in USA warehouse  
 1 week preparation + ground shipping



Majority of AutoStoneUSA Audi tiles are USA manufactured

Easy to work with, helpful, & supportive

The MOST affordable tile choice!

### Manufactured Declared Uses

Evaluate for use in automotive workshop and service drive environments.

**4.1.4 (Exterior, Wet)** - level outdoor spaces walkways, sidewalks, where such floors may be walked upon when wet (excluding ice or snow) if level, clean, maintained and free of standing water or other contaminants.

**4.1.5 (Oils/Greases)** - level areas regularly exposed to automotive fluids, etc., so long as such floors are level, regularly cleaned, maintained and free of standing water and contaminant build-up. Consult with your architect to determine dealership practices. **Review ANSI A326.3 2021 standard.**

### Declared Product Use & DCOF Requirement

Meets and exceeds .55 DCOF rating as required for ANSI A326.3 4.1.3 Exterior Wet.



## F-8 Alloy Grey

Series: [Enviroshop](#)

Color: Alloy Grey

Finish: Brightfinish | Textured

Surface: Medium Traction

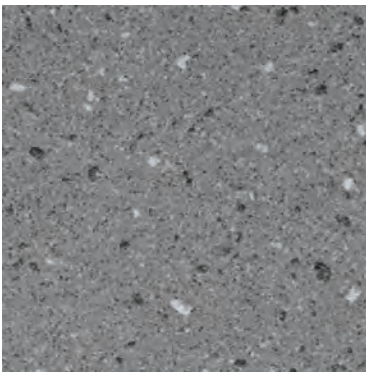
Size: 12" x 12" (U.S. Nominal Dimensions)

Thickness:  9 mm



**USA**  
MANUFACTURED

**enviroshop** **brightfinish**  
smarter, better, workshops ultra-cleanable technology



## F-8 Smoke Grey

Series: [Enviroshop](#)

Color: Smoke Grey

Finish: Brightfinish | Textured

Surface: Medium Traction

Size: 12" x 12" (U.S. Nominal Dimensions)

Thickness:  9 mm



**USA**  
MANUFACTURED

**enviroshop** **brightfinish**  
smarter, better, workshops ultra-cleanable technology



## F-8 Carbon Black

Series: [Enviroshop](#)

Color: Carbon Black

Finish: Brightfinish | Textured

Surface: Medium Traction

Size: 12" x 12" (U.S. Nominal Dimensions)

Thickness:  9 mm



**USA**  
MANUFACTURED

**enviroshop** **brightfinish**  
smarter, better, workshops ultra-cleanable technology

**enviroshop**  
smarter, better, workshops

### Material Availability

- Stocked USA ■ Alloy Grey
- Stocked USA ■ Smoke Grey
- Stocked USA ■ Carbon Black
- **STOCKED USA**  
Product stocked in USA warehouse  
1 week preparation + ground shipping

#### Manufacturer

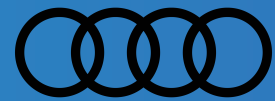
AutoStone Floor Systems

#### Product Use Category 4.1.3 Interior, Wet Plus (IW+)

Evaluate for interior use in automotive workshop and service drive environments with high speed doors and tech locker rooms. Enviroshop is medium traction surface. For interior applications, with good drainage. Floors walked on when wet should be level, clean, maintained and free of standing water or other contaminants. Should be cleaned with frequent maintenance to keep clean.

#### DCOF

Meets and exceeds .50 DCOF rating as required for ANSI A326 4.1.3 (IW+)



## F-8 Light (Ceflau) Grey

**Series:** Clinkershop  
**Color:** Light (Cefalu) Grey  
**Finish:** SLR Shop Textured  
**Size:** (U.S. Nominal Dimensions)  
 8" x 8"

**Thickness:** 12 mm



**STOCKED IN USA\***

Stocked in limited quantities, check with your AutoStone Audi program manager

Below: actual color varies, example is only representative



**Grout:** Laticrete Permacolor 89 Smoke Grey  
**Thinset:** LHT Plus



## F-8 Elba Black

**Series:** Clinkershop  
**Color:** Elba Black  
**Finish:** SLR Shop Textured  
**Size:** (U.S. Nominal Dimensions)  
 8" x 8"

**Thickness:** 12 mm



**STOCKED IN USA\***

Stocked in limited quantities, check with your AutoStone Audi program manager

Below: actual color varies, example is only representative



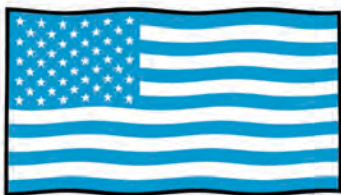
**Grout:** Laticrete Permacolor Select 45 Raven  
**Thinset:** LHT Plus



Stocked USA Light (Cefalu) Grey  
 Stocked USA Elba Black

## Material Availability - 8" x 8"

**STOCKED USA**  
 Product stocked in USA warehouse  
 1 week preparation + ground shipping



Majority of AutoStoneUSA Audi tiles are USA manufactured



Easy to work with, helpful, & supportive



The MOST affordable tile choice!



# enviroshop

smarter, better, workshops

brightfinish

ultra-cleanable  
technology

Brightfinish is a permanent sealant applied during manufacturing process which seals tile surface to resist staining. Additionally, brightfinish aids cleaning practices so floors can be kept in a "like-new" condition for the life of the dealership with regularly scheduled and proper cleaning practices.

**driveseries!**  
advanced surface technology

brightfinish

ultra-cleanable  
technology

Brightfinish is a permanent sealant applied during manufacturing process which seals tile surface to resist staining. Additionally, brightfinish aids cleaning practices so floors can be kept in a "like-new" condition for the life of the dealership with regularly scheduled and proper cleaning practices.

## Product Use Category 4.1.3. Interior, Wet Plus (IW+)

**4.1.3 Interior, Wet Plus (IW+)** Evaluate for interior use in automotive workshop and service drive environments with high speed doors and tech locker rooms. Enviroshop is medium traction surface. For interior applications, with good drainage. Floors walked on when wet if level, clean, maintained and free of standing water or other contaminants. Should be cleaned with frequent maintenance to keep clean.

**DCOF** Meets and exceeds .50 DCOF rating as required for ANSI A326 4.1.3 (IW+)

## Product Use Category 4.1.4 Exterior Wet (EW) & 4.1.5 (O/G)

Evaluate for use in automotive workshop and service drive environments.

**4.1.4 (Exterior, Wet)** - level outdoor spaces walkways, sidewalks, where such floors may be walked upon when wet (excluding ice or snow) if level, clean, maintained and free of standing water or other contaminants.

**4.1.5 (Oils/Greases)** - level areas regularly exposed to automotive fluids, etc., so long as such floors are level, regularly cleaned, maintained and free of standing water and contaminant build-up. Consult with your architect to determine dealership practices. Review ANSI A326.3 2021 standard.

## DCOF

Meets and exceeds .55 DCOF rating as required for ANSI A326.3 4.1.4. Exterior Wet and 4.1.5 Oils / Grease.

## Recommendations

Surface is a non-vitreous (impervious) enhanced porcelain tile. Oil, grease and all contaminants will remain on surface until properly cleaned. Floors should be cleaned with frequent maintenance to keep clean and free of contamination and debris when dealership is operating. To best manage STF (slip, trip, and fall) risk, spills and chemicals should be spot cleaned immediately and not left on surface. Floor cleaning should include use of de-greasing chemical, floor scrubber sweeper machine with wet vacuum to suck-up dirty water and debris as part of cleaning process.

For specific use applications, please consult with your architect or builder, or contact AutoStone USA with questions.



## Warranty

AutoStone offers a tile materials defect warranty. AutoStone offers an installation warranty when warranty services are contracted through AutoStone. Length of Warranty is dependent upon contracted term. AutoStone does not offer any warranty of any kind when a third-party installer is involved except the tile materials defect warranty. AutoStone has put together a unique package of products with Laticrete to provide contractors a 10 year warranty from Laticrete, when you purchase the correct materials directly through AutoStone. See *Warranties on our website for specifics.*

## Build with AutoStone

Our program supports Audi dealers with the highest quality, most affordable and comprehensive floor tile system for your dealership project. Affordable, high-quality, and easy to do business with are what you will experience with AutoStone. Call us today to support your project.

## Installation

See AutoStone recommended 09300 specifications for thinset standards on concrete substrate and AutoStone recommended installation standards.

## AutoStoneUSA Support

AutoStone has a team that supports your Audi project. If your call is not answered immediately, you will receive a return call no later than one business day. All emails are monitored and will be responded to quickly. We are here to support your project!

### Audi Brand Info

**Website:** [www.autostoneusa.com/audi](http://www.autostoneusa.com/audi)  
**Email:** [audi@autostoneusa.com](mailto:audi@autostoneusa.com)  
**Audi Line:** 214-393-4875

### Request For Quote

**Website:** [www.autostoneusa.com/rfq-audi](http://www.autostoneusa.com/rfq-audi)

### Contact Information

**Barry Wells**  
[barry@autostoneusa.com](mailto:barry@autostoneusa.com)  
**Mobile:** 214-830-1206  
**Direct:** 214-393-4862

autostone

