



F-8 Alloy Grey

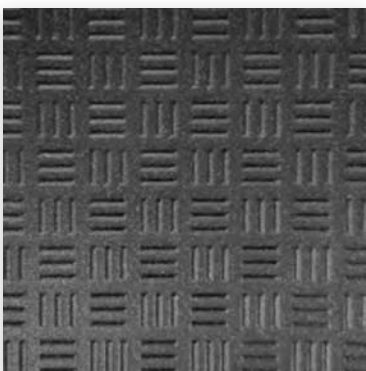
Series: Driveseries!
Color: Alloy Grey
Finish: R12 Textured
Size: 8" x 8" (nominal)
Product Code:
 AS.DS.0808.AG.R-12/ABC
Thicknesses:



Below: actual color varies, example is only representative



Grout: Laticrete Permacolor 89 Smoke Grey
Thinset: LHT Plus



F-8 Carbon Black

Series: Driveseries!
Color: Carbon Black
Finish: R12 Textured
Size: 8" x 8" (nominal)
Product Code:
 AS.DS.0808.CB.R-12/ABC
Thicknesses:



Below: actual color varies, example is only representative



Grout: Laticrete Permacolor 45 Raven
Thinset: LHT Plus

driveseries!

advanced surface technology

9.1 mm* Stocked USA ■ Alloy Grey
 Stocked USA ■ Carbon Black

12 mm* Stocked EU ■ Alloy Grey
 Stocked EU ■ Carbon Black

14 mm* Standard 8-10 ■ Alloy Grey
 Standard 8-10 ■ Carbon Black

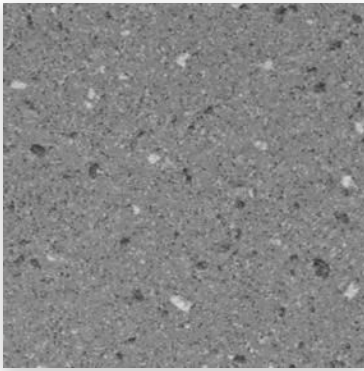
* thickness tolerance is: (+) or (-) .5mm

Material Availability - 8" x 8"

- **STOCKED USA**
 Product stocked in USA warehouse.
 1 week preparation + ground shipping.
- **STOCKED EU**
 Product stocked at factory in EU.
 1-2 week preparation + 4 week shipping.
- **STANDARD 8-10**
 Standard production product.
 8-10 week production + 4 week shipping.

If not available, lead-time is 6-8 weeks depending on your project location.





F-8 Smoke Grey

Series: Enviroshop

Color: Smoke Grey

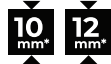
Size: 12" x 12" (nominal)

Finish: Textured

Product Code:

AS.ES.1212.SG.BR.TX

Thicknesses:

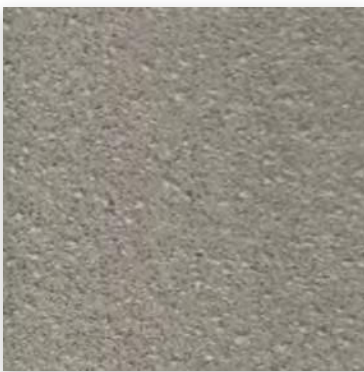


Below: actual color varies, example is only representative



Grout: Laticrete Permacolor 42 Platinum

Thinset: LHT Plus



F-8 Alloy Grey

Series: Enviroshop

Color: Alloy Grey

Size: 12" x 12" (nominal)

Finish: Textured

Product Code:

AS.ES.1212.AG.BR.TX

Thicknesses:



Below: actual color varies, example is only representative



Grout: Laticrete Permacolor 89 Smoke Grey

Thinset: LHT Plus



F-8 Carbon Black

Series: Enviroshop

Color: Carbon Black

Size: 12" x 12" (nominal)

Finish: Textured

Product Code:

AS.ES.1212.CB.BR.TX

Thicknesses:



Below: actual color varies, example is only representative



Grout: Laticrete Permacolor 45 Raven

Thinset: LHT Plus



enviroshop

smarter, better workshops

A permanent enhanced porcelain technology floor tile and system for use in automotive workshop and climate controlled service drive environments.

For interior environments only.

Material Availability - 12" x 12"



Stocked USA ■ Alloy Grey
Stocked USA ■ Smoke Grey
Stocked USA ■ Carbon Black



Standard 8-10 ■ Alloy Grey
Standard 8-10 ■ Smoke Grey
Standard 8-10 ■ Carbon Black

■ STOCKED USA

Product stocked in USA warehouse. 1 week preparation + ground (US) shipping.

■ STANDARD 8-10

Standard production product. 8-10 week production + ground (US) shipping.

If not available, lead-time is 6-8 weeks depending on your project location.

* thickness tolerance is: (+) or (-) .5mm



F-8 Anthracite

Series: Clinkershop by Röben
Color: Anthracite
Finish: Textured
Size: 4" x 8", 8" x 8"
Thickness:



Below: actual color varies, example is only representative



Grout: Laticrete Permacolor 42 Platinum
Thinset: LHT Plus



F-8 Light-Grey

Series: Clinkershop by Röben
Color: Light-Grey
Finish: Textured
Size: 4" x 8", 8" x 8"
Thickness:



Below: actual color varies, example is only representative



Grout: Laticrete Permacolor 89 Smoke Grey
Thinset: LHT Plus



F-8 Black-Grey

Series: Clinkershop by Röben
Color: Black-Grey
Finish: Textured
Size: 4" x 8", 8" x 8"
Thickness:



Below: actual color varies, example is only representative



Grout: Laticrete Permacolor 45 Raven
Thinset: LHT Plus



The best clinker tile in the automotive industry, with licensed and proprietary AutoStone ultra-cleaning technology – Brightfinish.

Material Availability - 4" x 8" & 8" x 8"

	R-11	Stocked EU	■ Light-Grey
		Stocked EU	■ Anthracite
		Stocked EU	■ Black-Grey
	R-10	Standard 8-10	■ Light-Grey
	R-12	Standard 8-10	■ Anthracite
		Standard 8-10	■ Black-Grey

R-11	Stocked EU	■ Light-Grey
	Stocked EU	■ Anthracite
	Stocked EU	■ Black-Grey
R-10	Standard 8-10	■ Light-Grey
R-12	Standard 8-10	■ Anthracite
	Standard 8-10	■ Black-Grey

- **STOCKED EU**
Product stocked at factory in EU.
1-2 week preparation + 4 week shipping.
- **STANDARD 8-10**
Standard production product.
8-10 week production + 4 week shipping.

* thickness tolerance is: (+) or (-) .5mm

If not available, lead-time is 6-8 weeks depending on your project location.