

**autostone**  
floor systems

# Toyota Tile Guide

*2021 Edition*

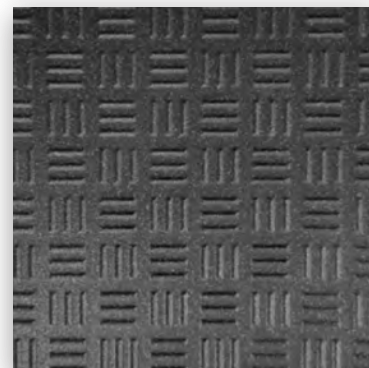
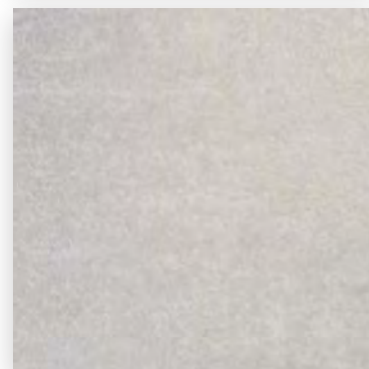
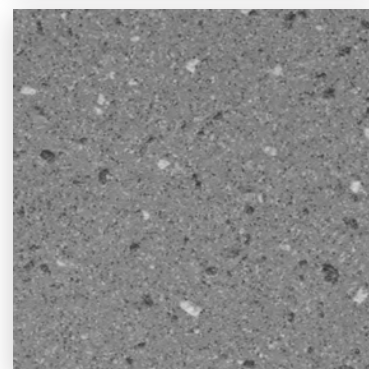
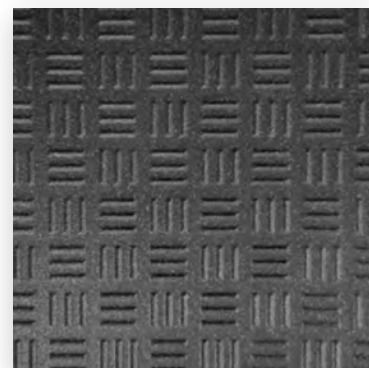
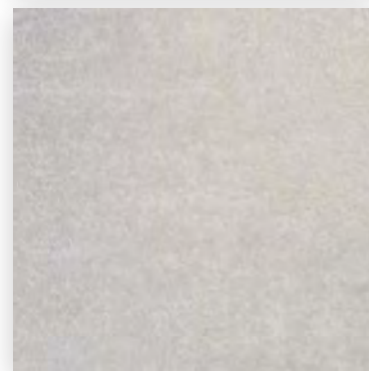
---

Toyota Tile Program  
[AutoStoneUSA.com/Toyota](http://AutoStoneUSA.com/Toyota)

**brightfinish**  
ultra-cleanable technology

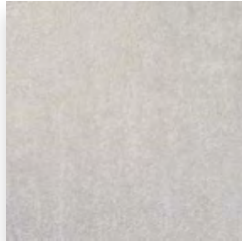
[AutoStoneUSA.com](http://AutoStoneUSA.com)

© 2021 AutoStone Floor Systems, All Rights Reserved.





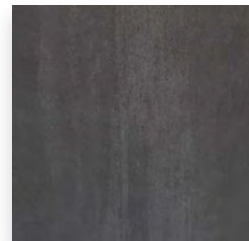
**TOYOTA**



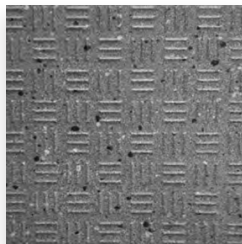
Grey



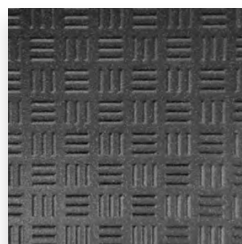
Deep Grey



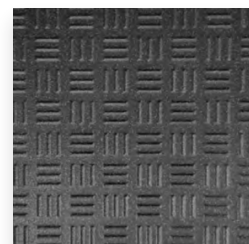
Charcoal



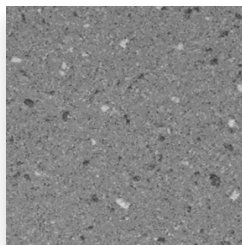
Smoke Grey



Carbon Black



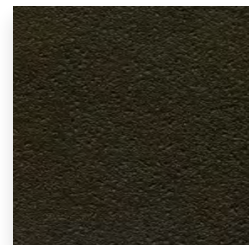
Carbon Black



Smoke Grey



Alloy Grey



Carbon Black

**Contact Information**

**Email:** [hello@autostoneusa.com](mailto:hello@autostoneusa.com)  
**Phone:** 214-393-4875 (Main Phone)



## Grey

**Series:** Clean.Tech Premier  
**Color:** Grey  
**Finish:** Brightfinish  
**Size:** 24" x 24" (nominal)

Below: actual color varies, example is only representative



**Grout:** Laticrete Permacolor Select 89 Smoke Grey  
**Thinset:** LHT Plus  
**brightfinish**  
 ultra-cleanable technology



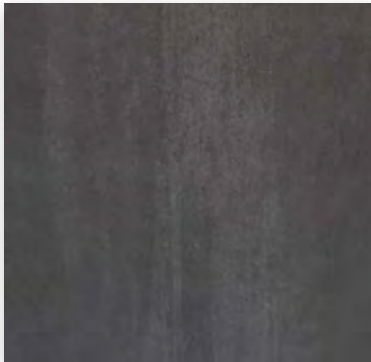
## Deep Grey

**Series:** Clean.Tech Premier  
**Color:** Deep Grey  
**Finish:** Brightfinish  
**Size:** 24" x 24" (nominal)

Below: actual color varies, example is only representative



**Grout:** Laticrete Permacolor Select 42 Platinum  
**Thinset:** LHT Plus  
**brightfinish**  
 ultra-cleanable technology



## Charcoal

**Series:** CleanTech.Premier  
**Color:** Charcoal  
**Finish:** Brightfinish  
**Size:** 24" x 24" (nominal)

Below: actual color varies, example is only representative



**Grout:** Laticrete Permacolor Select 45 Raven  
**Thinset:** LHT Plus  
**brightfinish**  
 ultra-cleanable technology

**brightfinish**  
 ultra-cleanable technology

### AutoStone Toyota Showroom Clean.Tech Tiles Reduce STF (Slip, Trip, Fall) Risk.

The DCOF (dynamic coefficient of friction) rating for this tile increases with this finish. Our brightfinish embeds micro-granule traction elements which increase the slip-resistance.

The result: Toyota stores with floors that reduce STF risk in showrooms. Dealers, employees and customers benefit!



## Alloy Grey

**Series:** Driveseries!

**Color:** Alloy Grey

**Finish:** R12 Textured

**Size:**

8" X 8" U.S. Nominal Dimensions

7 7/8" X 7 7/8" Actual Dimensions

*\*Dimension may vary within (+) or (-) 2mm in sizing*

**Thicknesses:**

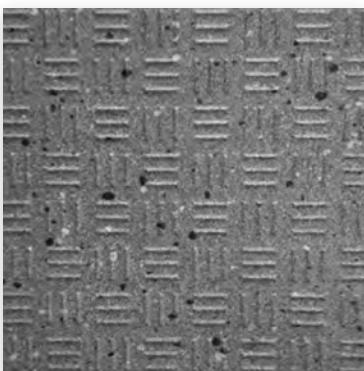
Below: actual color varies, example is only representative



**Grout:** Laticrete Permacolor 89 Smoke Grey

**Thinset:** LHT Plus

**brightfinish**  
ultra-cleanable technology



## Smoke Grey

**Series:** Driveseries!

**Color:** Smoke Grey

**Finish:** R12 Textured

**Size:**

8" X 8" U.S. Nominal Dimensions

7 7/8" X 7 7/8" Actual Dimensions

*\*Dimension may vary within (+) or (-) 2mm in sizing*

**Thicknesses:**

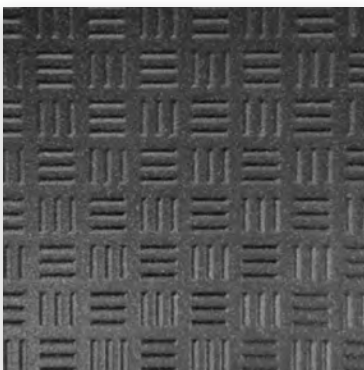
Below: actual color varies, example is only representative



**Grout:** Laticrete Permacolor 42 Platinum

**Thinset:** LHT Plus

**brightfinish**  
ultra-cleanable technology



## Carbon Black

**Series:** Driveseries!

**Color:** Carbon Black

**Finish:** R12 Textured

**Size:**

8" X 8" U.S. Nominal Dimensions

7 7/8" X 7 7/8" Actual Dimensions

*\*Dimension may vary within (+) or (-) 2mm in sizing*

**Thicknesses:**

Below: actual color varies, example is only representative



**Grout:** Laticrete Permacolor 45 Raven

**Thinset:** LHT Plus

**brightfinish**  
ultra-cleanable technology

**driveseries!**  
advanced surface technology

Stocked USA Alloy Grey  
Stocked USA Smoke Grey  
Stocked USA Carbon Black

Stocked EU Alloy Grey  
Stocked EU Smoke Grey  
Stocked EU Carbon Black

Standard 8-10 Alloy Grey  
Standard 8-10 Smoke Grey  
Standard 8-10 Carbon Black

### Material Availability - 8" x 8"

*\* equals U.S. Nominal Dimension. 7 7/8" x 7 7/8" Actual Dimensions. Dimension may vary within (+) or (-) 2mm in sizing.*

**STOCKED USA**

Product stocked in USA warehouse.

1 week preparation + ground shipping.

**STOCKED EU**

Product stocked at factory in EU.

1-2 week preparation + 4 week shipping.

**STANDARD 8-10**

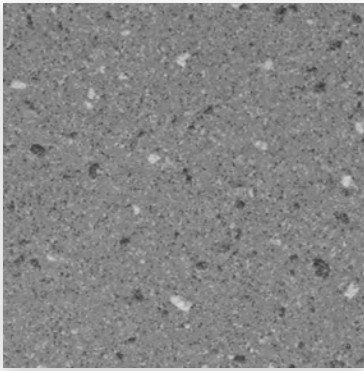
Standard production product.

8-10 week production + 4 week shipping.

*If not available, lead-time is 6-8 weeks depending on your project location.*







## Smoke Grey

**Series:** Enviroshop

**Color:** Smoke Grey

**Size:**

12" x 12" U.S. Nominal Dimensions

11 7/8" x 11 7/8" Actual Dimensions

*\*Dimension may vary within (+) or (-) 2mm in sizing*

**Finish:** Textured

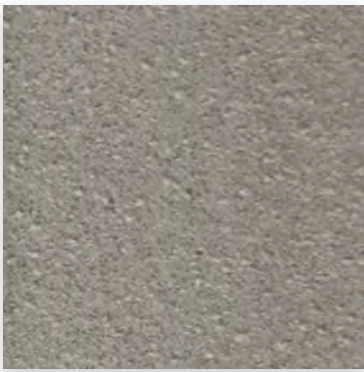
**Thicknesses:**  

Below: actual color varies, example is only representative



**Grout:** Laticrete Permacolor 42 Platinum

**Thinset:** LHT Plus



## Alloy Grey

**Series:** Enviroshop

**Color:** Alloy Grey

**Size:**

12" x 12" U.S. Nominal Dimensions

11 7/8" x 11 7/8" Actual Dimensions

*\*Dimension may vary within (+) or (-) 2mm in sizing*

**Finish:** Textured

**Thicknesses:**  

Below: actual color varies, example is only representative



**Grout:** Laticrete Permacolor 89 Smoke Grey

**Thinset:** LHT Plus



## Carbon Black

**Series:** Enviroshop

**Color:** Carbon Black

**Size:**

12" x 12" U.S. Nominal Dimensions

11 7/8" x 11 7/8" Actual Dimensions

*\*Dimension may vary within (+) or (-) 2mm in sizing*

**Finish:** Textured

**Thicknesses:**  

Below: actual color varies, example is only representative



**Grout:** Laticrete Permacolor 45 Raven

**Thinset:** LHT Plus









**enviroshop**

smarter, better workshops

### Material Availability - 12" x 12"

*\*equals U.S. Nominal Dimension. 11 7/8" x 11 7/8" Actual Dimensions. Dimension may vary within (+) or (-) 2mm in sizing.*

-  Stocked USA ■ Alloy Grey
-  Stocked USA ■ Smoke Grey
-  Stocked USA ■ Carbon Black
-  Standard 8-10 ■ Alloy Grey
-  Standard 8-10 ■ Smoke Grey
-  Standard 8-10 ■ Carbon Black

#### ■ STOCKED USA

Product stocked in USA warehouse. 1 week preparation + ground (US) shipping.

#### ■ STANDARD 8-10

Standard production product. 8-10 week production + ground (US) shipping.

If not available, lead-time is 6-8 weeks depending on your project location.

\* thickness tolerance is: (+) or (-) .5mm



## Anthracite

**Series:** Clinkershop by Röben  
**Color:** Anthracite  
**Finish:** Textured  
**Sizes:** 4" x 8", 8" x 8"  
**Thickness:**



Below: actual color varies, example is only representative



**Grout:** Laticrete Permacolor 42 Platinum  
**Thinset:** LHT Plus



## Light-Grey

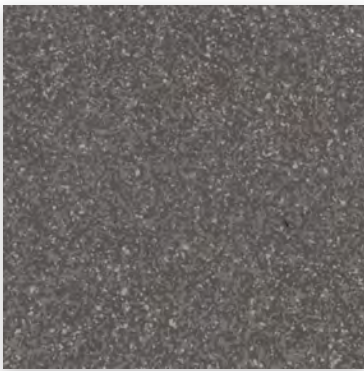
**Series:** Clinkershop by Röben  
**Color:** Light-Grey  
**Finish:** Textured  
**Size:** 4" x 8", 8" x 8"  
**Thickness:**



Below: actual color varies, example is only representative



**Grout:** Laticrete Permacolor 89 Smoke Grey  
**Thinset:** LHT Plus



## Black-Grey

**Series:** Clinkershop by Röben  
**Color:** Black-Grey  
**Finish:** Textured  
**Size:** 4" x 8", 8" x 8"  
**Thickness:**



Below: actual color varies, example is only representative



**Grout:** Laticrete Permacolor 45 Raven  
**Thinset:** LHT Plus



The best clinker tile in the automotive industry, with licensed and proprietary AutoStone ultra-cleaning technology – Brightfinish.

### Material Availability - 4" x 8", 8" x 8"



R-11 Stocked EU  
 R-11 Stocked EU  
 R-11 Stocked EU

■ Anthracite  
 ■ Light-Grey  
 ■ Black-Grey

R-11 Stocked EU  
 R-11 Stocked EU  
 R-11 Stocked EU

■ Anthracite  
 ■ Light-Grey  
 ■ Black-Grey

■ **STOCKED EU**

Product stocked at factory in EU.  
 1-2 week preparation + 4 week shipping.



R-10 Standard 8-10  
 R-12 Standard 8-10  
 R-12 Standard 8-10

■ Anthracite  
 ■ Light-Grey  
 ■ Black-Grey

R-10 Standard 8-10  
 R-12 Standard 8-10  
 R-12 Standard 8-10

■ Anthracite  
 ■ Light-Grey  
 ■ Black-Grey

■ **STANDARD 8-10**

Standard production product.  
 8-10 week production + 4 week shipping.

\* thickness tolerance is: (+) or (-) .5mm

If not available, lead-time is 6-8 weeks depending on your project location.

## Build with AutoStone.

Our program supports Toyota dealers with the highest quality, most affordable and comprehensive floor tile system for your dealership project. Affordable, high-quality, and easy to do business with are what you will experience with AutoStone. Call us today to support your project.

## Warranty

AutoStone offers a tile materials defect warranty.

AutoStone offers an installation warranty when warranty services are contracted through AutoStone. Length of Warranty is dependent upon contracted term. AutoStone does not offer any warranty of any kind when a third party installer is involved except the tile materials defect warranty. AutoStone has put together a unique package of products with Laticrete to provide contractors a 10 year warranty from Laticrete, when the purchase the correct materials directly through AutoStone.

*See Warranties on our website for specifics.*

## Installation

See AutoStone recommended 09300 specifications for thinset standards on concrete substrate and AutoStone recommended installation standards.

