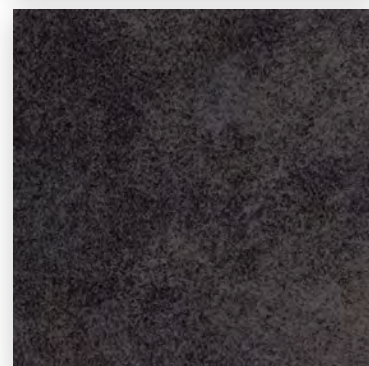
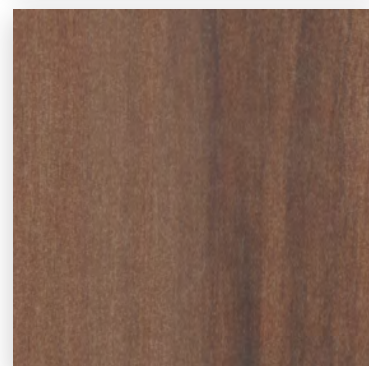
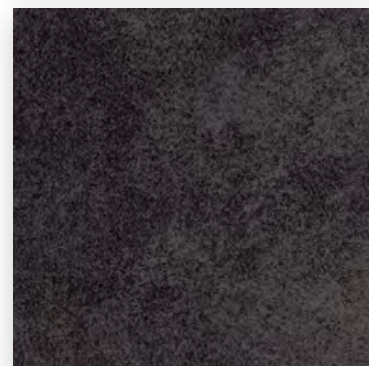


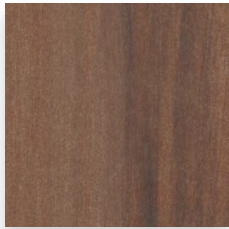
Mazda Tile Guide

2021 Edition

Tile Submittal for the Mazda Program
AutoStoneUSA.com/Mazda

brightfinish
ultra-cleanable technology





CT-1



CT-2 (a)
unpolished



CT-2 (b)
polished



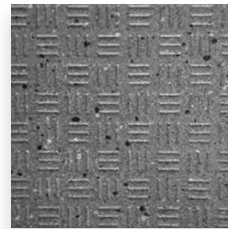
CT-4



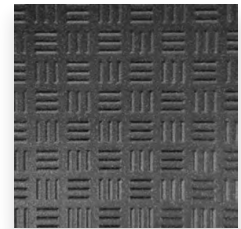
CT-5



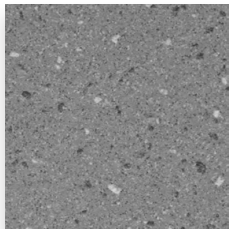
CT-6 (a)
high traction surface



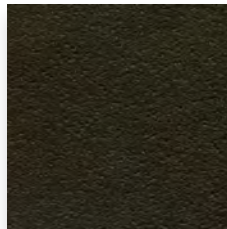
CT-6 (b)
high traction surface



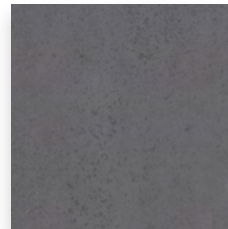
CT-7
high traction surface



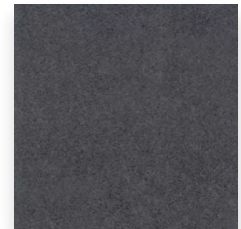
CT-8 (a)
medium traction surface



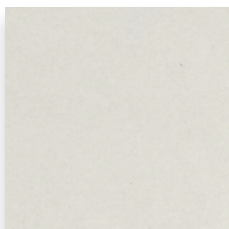
CT-8 (b)
medium traction surface



CT-9



CT-10



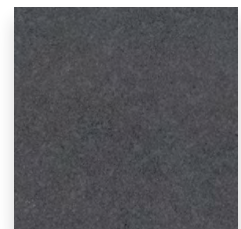
CT-11



CT-12



CT-13

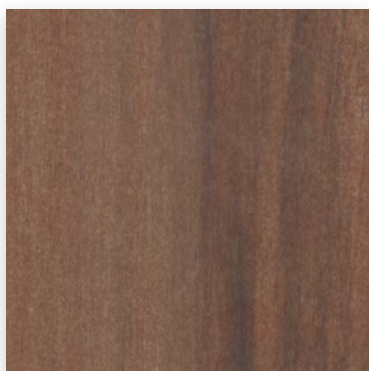


CT-14

Contact Information

Email: mazda@autostoneusa.com

Phone: 214-393-4875 (Main Phone)



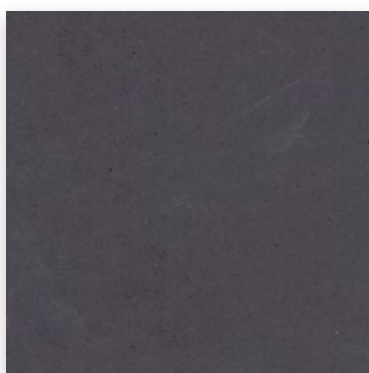
CT-1

Series: RichWood
Color: Cuoio
Finish: Natural
Size: 8" x 48" (nominal)

Below: actual color varies, example is only representative



Grout: Laticrete Permacolor Select 66 Chestnut Brown
Thinset: LHT Plus



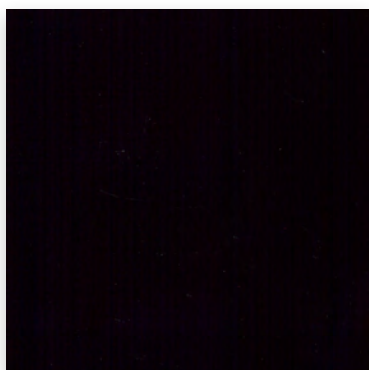
CT-2 (a)

Series: Unified Solid
Color: Nero Black
Finish: Natural | Matte
Size: 24" x 24" (nominal)

Below: actual color varies, example is only representative



Grout: Laticrete Permacolor Select 22 Midnight Black
Thinset: LHT Plus



CT-2 (b)

Series: Unified Solid
Color: Nero Black
Finish: Polished
Size: 24" x 24" (nominal)

Below: actual color varies, example is only representative



Grout: Laticrete Permacolor Select 22 Midnight Black
Thinset: LHT Plus



CT-4

Series: CleanTech
Color: Mocha
Finish: Brightfinish
Size: 12" x 12" (nominal)

Below: actual color varies, example is only representative



Grout: Laticrete Permacolor Select 35 Mocha
Thinset: LHT Plus

brightfinish
ultra-cleanable technology





CT-5

Series: aWallSeries
Color: a.Blanco
Size: 8" x 24" (nominal)
Finish: Natural | Matte

Below: actual color varies, example is only representative



Grout: Laticrete Permacolor Select 44 Bright White
Thinset: LHT Plus



CT-6 (a)

Series: Driveseries!
Color: Alloy Grey
Finish: Textured | High Traction
Size:

8" x 8" U.S. Nominal Dimensions
 7 7/8" x 7 7/8" Actual Dimensions
**Dimension may vary within (+) or (-) 2mm in sizing*

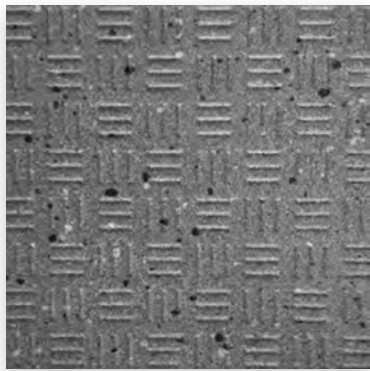
Thickness: 9.1 mm

Below: actual color varies, example is only representative



Grout: Laticrete Permacolor 89 Smoke Grey
Thinset: LHT Plus

brightfinish
 ultra-cleanable technology



CT-6 (b)

Series: Driveseries!
Color: Smoke Grey
Finish: Textured | High Traction
Size:

8" x 8" U.S. Nominal Dimensions
 7 7/8" x 7 7/8" Actual Dimensions
**Dimension may vary within (+) or (-) 2mm in sizing*

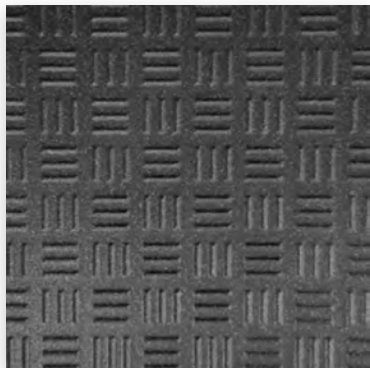
Thickness: 9.1 mm

Below: actual color varies, example is only representative



Grout: Laticrete Permacolor 42 Platinum
Thinset: LHT Plus

brightfinish
 ultra-cleanable technology



CT-7

Series: Driveseries!
Color: Carbon Black
Finish: Textured | High Traction
Size:

8" x 8" U.S. Nominal Dimensions
 7 7/8" x 7 7/8" Actual Dimensions
**Dimension may vary within (+) or (-) 2mm in sizing*

Thickness: 9.1 mm

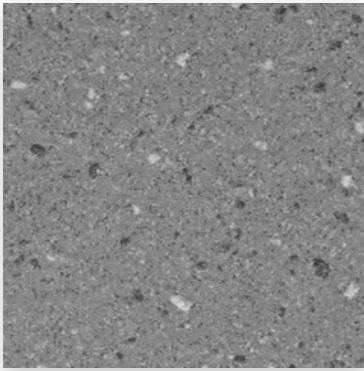
Below: actual color varies, example is only representative




Grout: Laticrete Permacolor 45 Raven
Thinset: LHT Plus

brightfinish
 ultra-cleanable technology





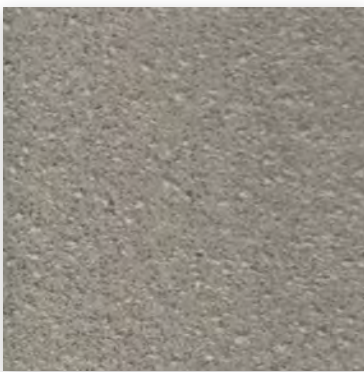
CT-8 (a)

Series: Enviroshop
Color: Smoke Grey
Size: 12" x 12" (nominal)
Finish: Textured | Medium Traction
Thickness: 

Below: actual color varies, example is only representative



Grout: Laticrete Permacolor 42 Platinum
Thinset: LHT Plus



CT-8 (b)

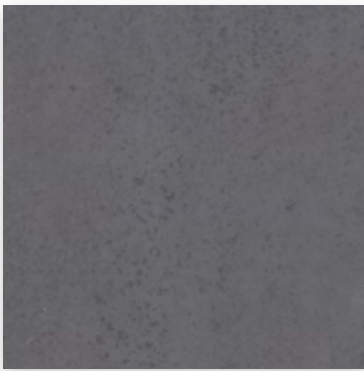
Series: Enviroshop
Color: Alloy Grey
Size: 12" x 12" (nominal)
Finish: Textured | Medium Traction
Thickness: 

Below: actual color varies, example is only representative



Grout: Laticrete Permacolor 89 Smoke Grey
Thinset: LHT Plus

brightfinish
ultra-cleanable technology



CT-9

Series: aWallSeries
Color: a.Anthracite
Size: 8" x 12" (nominal)
Finish: Natural | Matte

Below: actual color varies, example is only representative



Grout: Laticrete Permacolor 45 Raven
Thinset: LHT Plus



CT-10

Series: CleanTech
Color: Anthracite
Size: 24" x 24" (nominal)
Finish: Honed | Natural - Brightfinish

Below: actual color varies, example is only representative



Grout: Laticrete Permacolor 45 Raven
Thinset: LHT Plus

brightfinish
ultra-cleanable technology

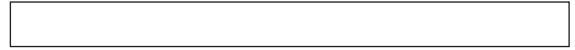




CT-11

Series: Unified Solid
Color: Blanco
Finish: Natural | Honed
Size: 12" x 12" (nominal)

Below: actual color varies, example is only representative



Grout: Laticrete Permacolor Select 44 Bright White
Thinset: LHT Plus



CT-12

Series: Unified Solid
Color: Blanco
Finish: Natural | Honed
Size: 12" x 24" (nominal)

Below: actual color varies, example is only representative



Grout: Laticrete Permacolor Select 44 Bright White
Thinset: LHT Plus



CT-13

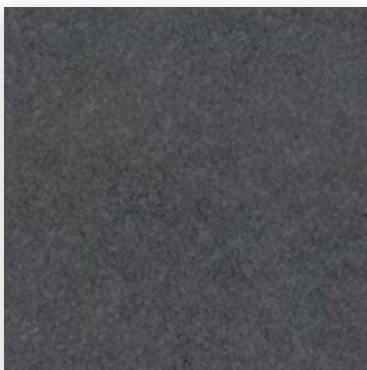
Series: CleanTech
Color: Grey
Finish: Natural | Honed - Brightfinish
Size: 24" x 24" (nominal)

Below: actual color varies, example is only representative



Grout: Laticrete Permacolor 89 Smoke Grey
Thinset: LHT Plus

brightfinish
ultra-cleanable technology



CT-14

Series: CleanTech
Color: Anthracite
Finish: Natural | Honed - Brightfinish
Size: 24" x 24" (nominal)

Below: actual color varies, example is only representative



Grout: Laticrete Permacolor 45 Raven
Thinset: LHT Plus

brightfinish
ultra-cleanable technology



driveseries! advanced surface technology

9.1 mm* Stocked USA ■ Alloy Grey
Stocked USA ■ Carbon Black

12 mm* Stocked EU ■ Alloy Grey
Stocked EU ■ Carbon Black

14 mm* Standard 8-10 ■ Alloy Grey
Standard 8-10 ■ Carbon Black

* thickness tolerance is: (+) or (-) .5mm

Material Availability - 8" x 8"

- **STOCKED USA**
Product stocked in USA warehouse. 1 week preparation + ground shipping.
- **STOCKED EU**
Product stocked at factory in EU. 1-2 week preparation + 4 week shipping.
- **STANDARD 8-10**
Standard production product. 8-10 week production + 4 week shipping.

If not available, lead-time is 6-8 weeks depending on your project location.

enviroshop smarter, better workshops

A permanent enhanced porcelain technology floor tile and system for use in automotive workshop and climate controlled service drive environments. For interior environments only.

Material Availability - 12" x 12"

10 mm* Stocked USA ■ Alloy Grey
Stocked USA ■ Smoke Grey
Stocked USA ■ Carbon Black

12 mm* Standard 8-10 ■ Alloy Grey
Standard 8-10 ■ Smoke Grey
Standard 8-10 ■ Carbon Black

* thickness tolerance is: (+) or (-) .5mm

- **STOCKED USA**
Product stocked in USA warehouse. 1 week preparation + ground (US) shipping.
- **STANDARD 8-10**
Standard production product. 8-10 week production + ground (US) shipping.

If not available, lead-time is 6-8 weeks depending on your project location.

Build with AutoStone.

AutoStone is the best choice for your Mazda project. We are approved for: showroom, service drive and shop floor materials. Select AutoStone for your Mazda dealership tile finish.

One provider for your entire facility. Go with the experts, select AutoStone.

All materials are built and manufactured to build better Audi dealerships!

Warranty

AutoStone offers a tile materials defect warranty.

AutoStone offers an installation warranty when warranty services are contracted through AutoStone. Length of Warranty is dependent upon contracted term. AutoStone does not offer any warranty of any kind when a third party installer is involved except the tile materials defect warranty. AutoStone has put together a unique package of products with Laticrete to provide contractors a 10 year warranty from Laticrete, when the purchase the correct materials directly through AutoStone.

See Warranties on our website for specifics.

Installation

See AutoStone recommended 09300 specifications for thinset standards on concrete substrate and AutoStone recommended installation standards.

