

Project Registration and Materials Use Confirmation Agreement

TOYOTA

AutoStone is a General Contractors best partner on your Toyota project. Our Guaranteed On-Time Delivery and Best Priced program removes the risk of your tile materials being late or delayed and assures you of the lowest price for Toyota approved tile.

When you partner with AutoStone, you win big! To register your project all we need is confirmation that your project will be using AutoStone tile with our best price guarantee. Additionally, we need your projected materials delivery date and the projected materials count. AutoStone will guarantee the timely delivery of your tile materials and assurance that your subcontractor has the lowest pricing on their Toyota tile. See AutoStone Letter of Intent (LOI) document for details. AutoStone gives builders more contracting flexibility, assures you the best pricing and guarantees you on-time delivery of your Toyota tile.



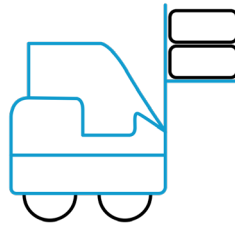
AutoStone Provides Best Price Guarantee For Toyota Approved Tiles

AutoStone guarantees that the Toyota approved tile we provide your project will be the best price of all tile vendor options.

You provide us a list of bidding subcontractors and AutoStone will quote them our "best pricing" for Toyota tile and setting materials.

With AutoStone you have the guarantee that your tile materials are Toyota brand approved and you are guaranteed the best pricing on your tile and materials purchase.

We deliver all of this on-time for your project. Never scramble for materials again! AutoStone tile materials are Toyota brand approved!

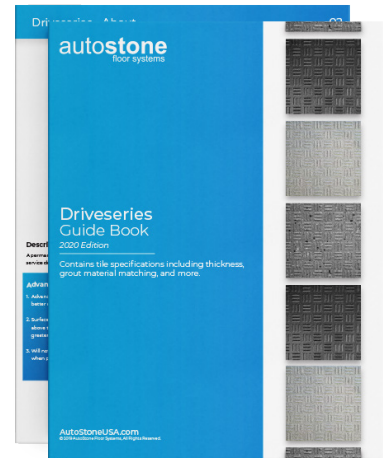


Toyota Tile Guaranteed On-Time Delivery with AutoStone

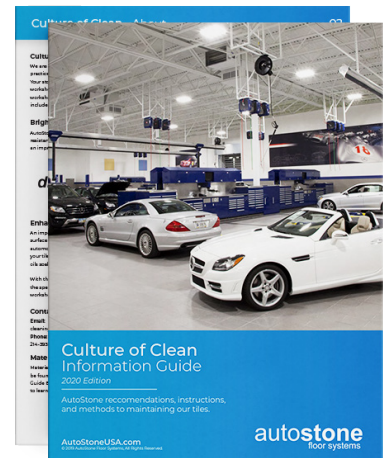
When you commit to using AutoStone as your tile provider, for your Toyota project, we support you with guaranteed inventory, project tracking and on-time delivery of all tile materials.

Please request that your project architect confirm and approve use of AutoStone materials for your project.

Our partnership starts with your signed LOI which directs your tile subcontractor to purchase their tile materials from AutoStone. Based on your LOI, materials will be ordered and ready for the start of your installation schedule.



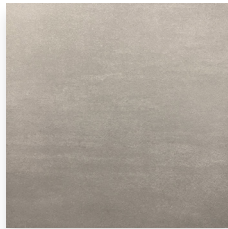
Driveseries Tile Guide



Culture of Clean

TOYOTA

Tile Program



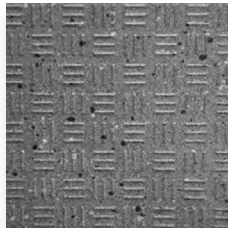
Grey



Deep Grey



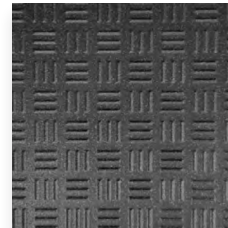
Charcoal



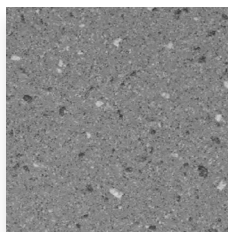
Smoke Grey



Alloy Grey



Carbon Black



Smoke Grey



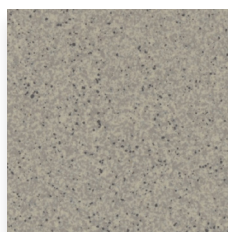
Alloy Grey



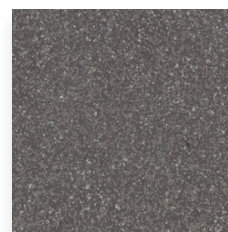
Carbon Black



Anthracite



Light-Grey



Black-Grey