

Project Registration and Materials Use Confirmation Agreement



PORSCHE

AutoStone is a General Contractors best partner on your Destination Porsche project. Our Guaranteed On-Time Delivery and Best Priced program removes the risk of your tile materials being late or delayed and assures you of the lowest price for Porsche approved tile.

When you partner with AutoStone, you win big! To register your project all we need is confirmation that your project will be using AutoStone tile with our best price guarantee. Additionally, we need your projected materials delivery date and the projected materials count. AutoStone will guarantee the timely delivery of your tile materials and assurance that your subcontractor has the lowest pricing on their Porsche tile. See AutoStone Letter of Intent (LOI) document for details. AutoStone gives builders more contracting flexibility, assures you the best pricing and guarantees you on-time delivery of your Destination Porsche tile.



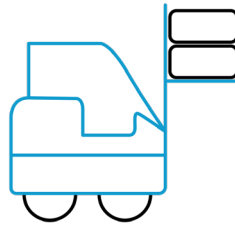
AutoStone Provides Best Price Guarantee For Porsche Approved Tiles

AutoStone guarantees that the Porsche approved tile we provide your project will be the best price of all tile vendor options.

You provide us a list of bidding subcontractors and AutoStone will quote them our “best pricing” for Subaru tile and setting materials.

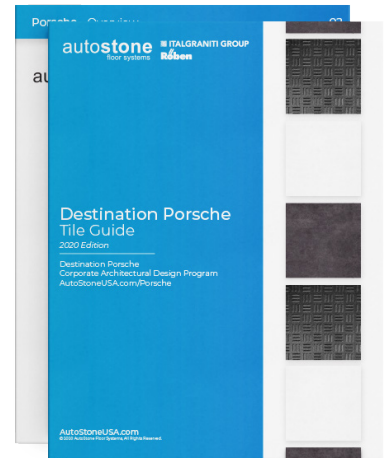
With AutoStone you have the guarantee that your tile materials are Subaru brand approved and you are guaranteed the best pricing on your tile and materials purchase.

We deliver all of this on-time for your project. Never scramble to VE materials again! AutoStone tile materials are Subaru brand approved!

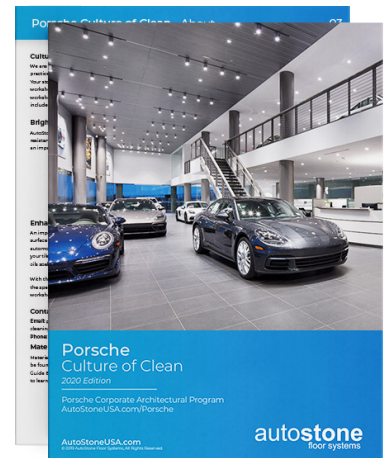


Porsche Tile Guaranteed On-Time Delivery with AutoStone

When you commit to using AutoStone as your tile provider, on your Porsche project, we support you with guaranteed inventory, project-tracking and on-time delivery of all tile materials. Manufacturers are listed as ItalGraniti (showroom tile): New Black Lava, New Factory White, and Roben workshop tile: ClinkerShop and other tiles as well are listed in the New “Destination Porsche” manual. Request your project architect confirm and approve use of these materials for your project. Or ask AutoStone for a “Destination Porsche” manual. Our partnership starts with your signed LOI which directs your tile subcontractor to purchase their tile materials from AutoStone. Based on your LOI, materials will be ordered and ready for the start of your installation schedule.



Porsche Tile Guide



Culture of Clean

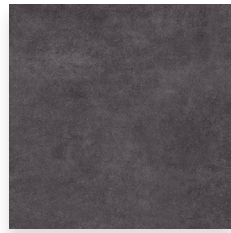


PORSCHE



ITALGRANITI GROUP

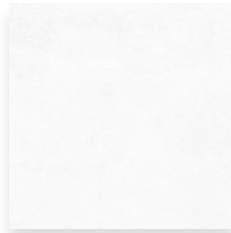
Tile Program



New Black Lava



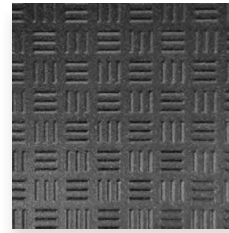
New White Factory



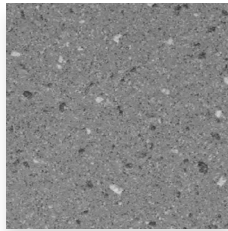
Porsche Shop White



Alloy Grey



Carbon Black



Smoke Grey



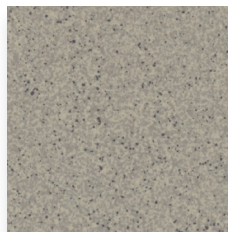
Alloy Grey



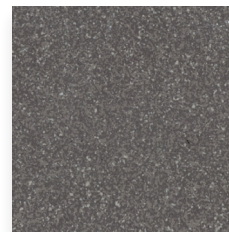
Carbon Black



Anthracite



Light-Grey



Black-Grey