

**autostone**  
floor systems

# Subaru Tile Guide

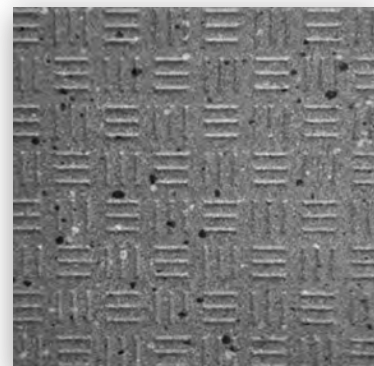
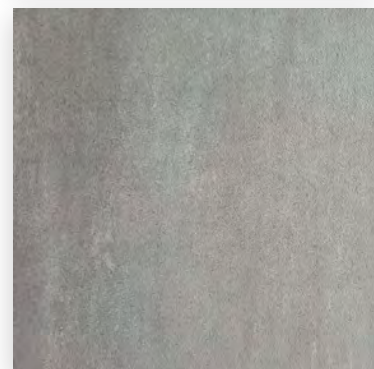
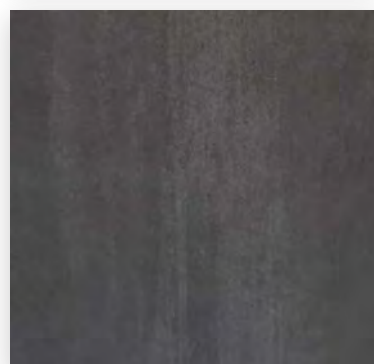
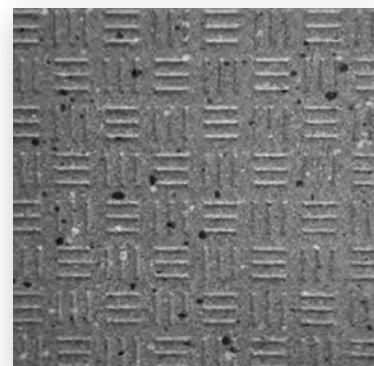
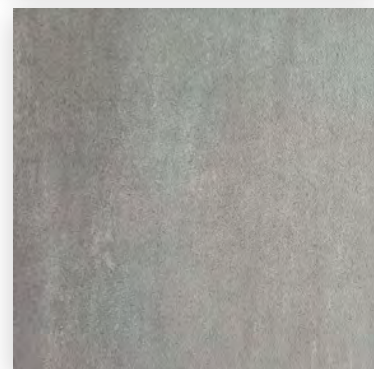
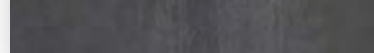
*2021 Edition*

Subaru Brand Compliant Program  
[AutoStoneUSA.com/Subaru](http://AutoStoneUSA.com/Subaru)

**brightfinish**  
ultra-cleanable technology

[AutoStoneUSA.com](http://AutoStoneUSA.com)

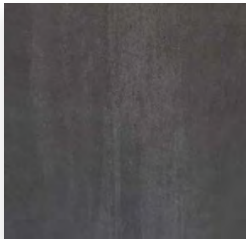
© 2021 AutoStone Floor Systems, All Rights Reserved.



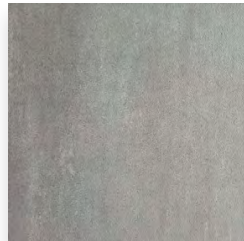
autostone  
floor systems



**SUBARU**



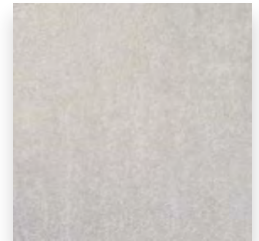
CT-1 and CWT-1



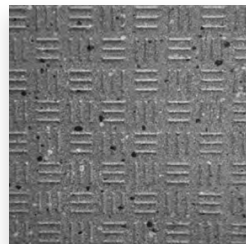
CT-1 and CWT-1



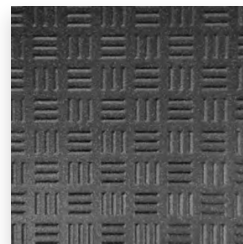
CWT-1



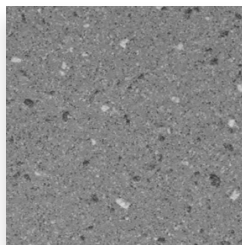
CWT-1



CT-6



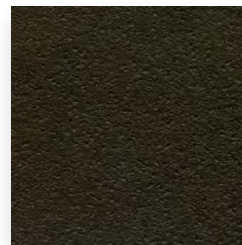
CT-7



CT-6



CT-6



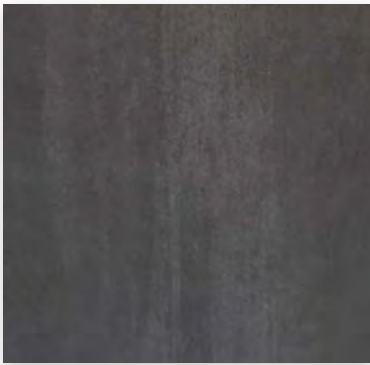
CT-7

**Contact Information**

**Email:** [subaru@autostoneusa.com](mailto:subaru@autostoneusa.com)

**Phone:** 800-772-1473 (Toll Free)

**Phone:** 214-393-4875 (Main Phone)



## CT-1 Charcoal

**Series:** CleanTech.Premier

**Color:** Charcoal

**Finish:** Brightfinish

**Size:** 24" x 24" (nominal)

**Thickness:**



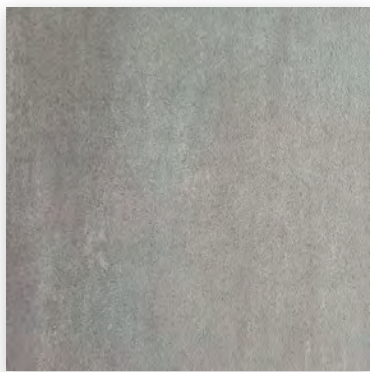
**brightfinish**  
ultra-cleanable technology

Below: actual color varies, example is only representative



**Grout:** Laticrete Permacolor Select 45 Raven

**Thinset:** LHT Plus



## CT-1 Deep Grey

**Series:** CleanTech.Premier

**Color:** Deep Grey

**Finish:** Brightfinish

**Size:** 24" x 24" (nominal)

**Thickness:**



**brightfinish**  
ultra-cleanable technology

Below: actual color varies, example is only representative



**Grout:** Laticrete Permacolor Select 42 Platinum

**Thinset:** LHT Plus

**brightfinish**  
ultra-cleanable technology

### AutoStone CT-1 (Subaru Showroom) Tiles with Brightfinish Reduce Stains and Clean Easier

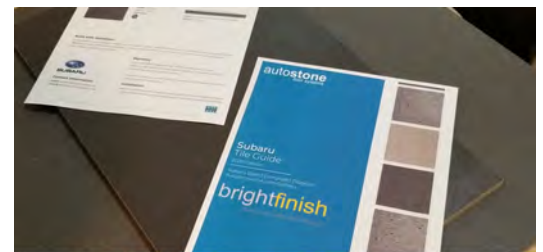
The brightfinish surface aids them in their cleaning practices and enhances your showroom appearance. AutoStone tile is much easier to clean for Subaru dealers. AutoStone brightfinish eliminates\* concerns with your tile showing haze, dirt, grime, etc., (\*with proper cleaning practices). Tile with brightfinish does easily stain, especially with tire-bright, or similar tire dressing materials.

The result? Better appearing Subaru stores, happier dealers!

### AutoStone CT-1 (Subaru Showroom) Tiles Reduce STF (Slip, Trip, Fall) Risk.

The DCOF (dynamic coefficient of friction) rating for this tile increases with this finish. Our brightfinish embeds micro-granule traction elements which increase the slip-resistance.

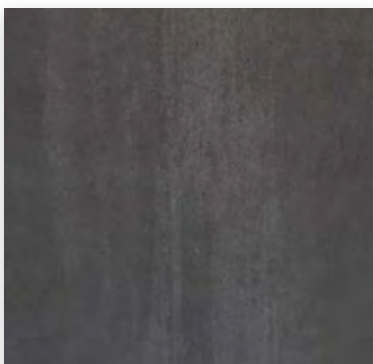
The result: Subaru stores with floors that reduce STF risk in showrooms. Dealers, employees and customers benefit!



auto**stone** floor systems    bright**finish** ultra-cleanable technology    Subaru CT-1

Click the image above for a Brightfinish demonstration





## CWT-1 Charcoal

**Series:** CleanTech.Premier

**Color:** Charcoal

**Finish:** Brightfinish

**Size:** 24" x 24" (nominal)

**Thickness:**

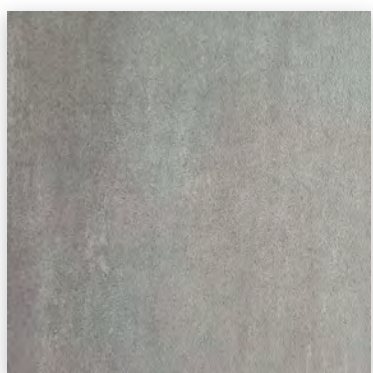


Below: actual color varies, example is only representative



**Grout:** Laticrete Permacolor Select 45 Raven

**Thinset:** LHT Plus



## CWT-1 Deep Grey

**Series:** CleanTech.Premier

**Color:** Deep Grey

**Finish:** Brightfinish

**Size:** 24" x 24" (nominal)

**Thickness:**



Below: actual color varies, example is only representative



**Grout:** Laticrete Permacolor Select 42 Platinum

**Thinset:** LHT Plus



## CWT-1 Grey

**Series:** Premier 6

**Color:** Grey

**Finish:** Polished

**Size:** 24" x 24" (nominal)

**Thickness:**

Below: actual color varies, example is only representative



**Grout:** Laticrete Permacolor Select 89 Smoke Grey

**Thinset:** LHT Plus



## CWT-1 Grey

**Series:** CleanTech.Premier

**Color:** Grey

**Finish:** Brightfinish

**Size:** 24" x 24" (nominal)

**Thickness:**



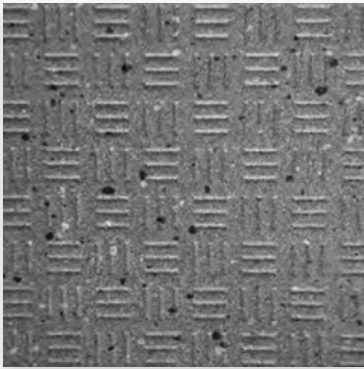
Below: actual color varies, example is only representative



**Grout:** Laticrete Permacolor Select 89 Smoke Grey

**Thinset:** LHT Plus





## CT-6 Smoke Grey

**Series:** Driveseries!

**Color:** Smoke Grey

**Finish:** R12 Textured

**Size:**



8" x 8" U.S. Nominal Dimensions

7 7/8" x 7 7/8" Actual Dimensions

*\*Dimension may vary within (+) or (-) 2mm in sizing*

**Product Code:**

AS.DS.0808.SG.R-12/ABC

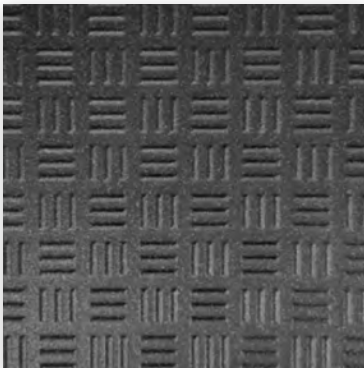
**Thicknesses:**   

Below: actual color varies, example is only representative



**Grout:** Laticrete Permacolor 89 Smoke Grey

**Thinset:** LHT Plus



## CT-7 Carbon Black

**Series:** Driveseries!

**Color:** Carbon Black

**Finish:** R12 Textured

**Size:**


8" x 8" U.S. Nominal Dimensions

7 7/8" x 7 7/8" Actual Dimensions

*\*Dimension may vary within (+) or (-) 2mm in sizing*

**Product Code:**

AS.DS.0808.CB.R-12/ABC

**Thicknesses:**   

Below: actual color varies, example is only representative






**Grout:** Laticrete Permacolor 45 Raven

**Thinset:** LHT Plus

**driveseries!**  
advanced surface technology

 Stocked USA  Smoke Grey  
Stocked USA  Carbon Black

 Stocked EU  Smoke Grey  
Stocked EU  Carbon Black

 Standard 8-10  Smoke Grey  
Standard 8-10  Carbon Black

\* thickness tolerance is: (+) or (-) .5mm

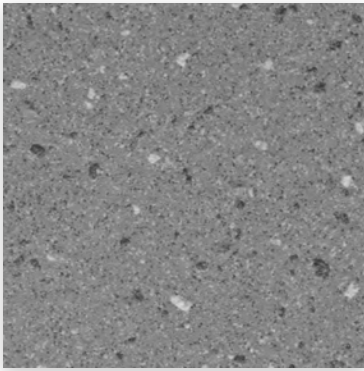
### Material Availability - 8" x 8"

*\* equals U.S. Nominal Dimension. 7 7/8" x 7 7/8" Actual Dimensions. Dimension may vary within (+) or (-) 2mm in sizing.*

-  **STOCKED USA**  
Product stocked in USA warehouse.  
1 week preparation + ground shipping.
-  **STOCKED EU**  
Product stocked at factory in EU.  
1-2 week preparation + 4 week shipping.
-  **STANDARD 8-10**  
Standard production product.  
8-10 week production + 4 week shipping.

If not available, lead-time is 6-8 weeks depending on your project location.





## CT-6 Smoke Grey

**Series:** Enviroshop

**Color:** Smoke Grey

**Size:**

12" x 12" U.S. Nominal Dimensions

11 7/8" x 11 7/8" Actual Dimensions

*\*Dimension may vary within (+) or (-) 2mm in sizing*

**Finish:** Textured

**Thicknesses:**  

Below: actual color varies, example is only representative



**Grout:** Laticrete Permacolor 42 Platinum

**Thinset:** LHT Plus



## CT-6 Alloy Grey

**Series:** Enviroshop

**Color:** Alloy Grey

**Size:**

12" x 12" U.S. Nominal Dimensions

11 7/8" x 11 7/8" Actual Dimensions

*\*Dimension may vary within (+) or (-) 2mm in sizing*

**Finish:** Textured

**Thicknesses:**  

Below: actual color varies, example is only representative



**Grout:** Laticrete Permacolor 89 Smoke Grey

**Thinset:** LHT Plus



## CT-7 Carbon Black

**Series:** Enviroshop

**Color:** Carbon Black

**Size:**

12" x 12" U.S. Nominal Dimensions

11 7/8" x 11 7/8" Actual Dimensions

*\*Dimension may vary within (+) or (-) 2mm in sizing*

**Finish:** Textured

**Thicknesses:**  

Below: actual color varies, example is only representative



**Grout:** Laticrete Permacolor 45 Raven

**Thinset:** LHT Plus





# enviroshop

smarter, better workshops

### Material Availability - 12" x 12"

*\*equals U.S. Nominal Dimension. 11 7/8" x 11 7/8" Actual Dimensions. Dimension may vary within (+) or (-) 2mm in sizing.*

-  Stocked USA ■ Alloy Grey
- Stocked USA ■ Smoke Grey
- Stocked USA ■ Carbon Black
-  Standard 8-10 ■ Alloy Grey
- Standard 8-10 ■ Smoke Grey
- Standard 8-10 ■ Carbon Black

- **STOCKED USA**  
Product stocked in USA warehouse. 1 week preparation + ground (US) shipping.
- **STANDARD 8-10**  
Standard production product. 8-10 week production + ground (US) shipping.

If not available, lead-time is 6-8 weeks depending on your project location.

\* thickness tolerance is: (+) or (-) .5mm

## Build with AutoStone.

Our program supports Subaru dealers with the highest quality, most affordable and comprehensive floor tile system for your dealership project. Affordable, high-quality, and easy to do business with are what you will experience with AutoStone. Call us today to support your project.

## Warranty

AutoStone offers a tile materials defect warranty.

AutoStone offers an installation warranty when warranty services are contracted through AutoStone. Length of Warranty is dependent upon contracted term. AutoStone does not offer any warranty of any kind when a third party installer is involved except the tile materials defect warranty. AutoStone has put together a unique package of products with Laticrete to provide contractors a 10 year warranty from Laticrete, when the purchase the correct materials directly through AutoStone.

*See Warranties on our website for specifics.*

## Installation

See AutoStone recommended 09300 specifications for thinset standards on concrete substrate and AutoStone recommended installation standards.

