

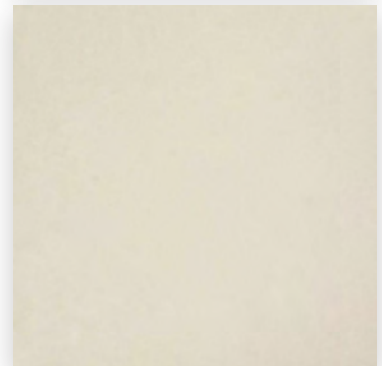
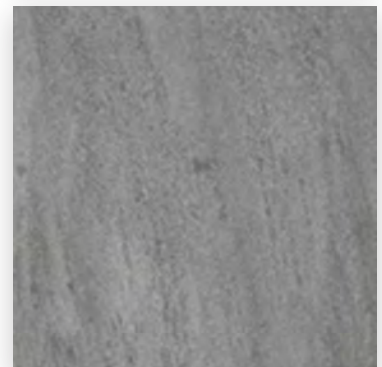
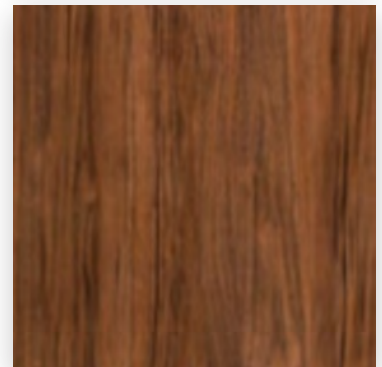
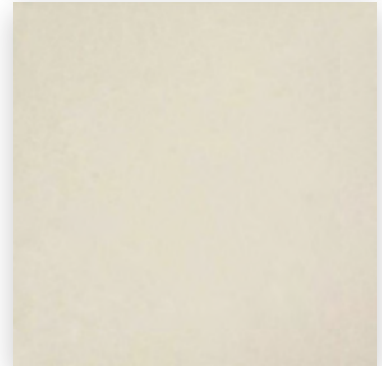
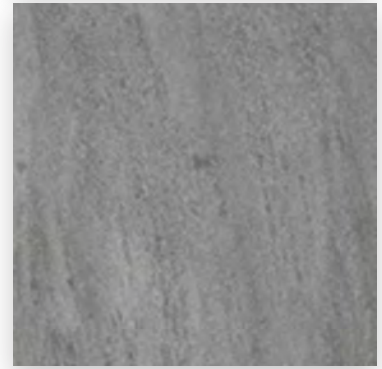
autostone
floor systems

JLR

Jaguar Land Rover Tile Guide

2023.11 Edition

ARCH Retail Program Approved Floor System
AutoStoneUSA.com/JLR

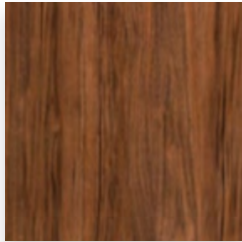


AutoStoneUSA.com

© 2023 AutoStone Floor Systems, All Rights Reserved.

autostone
floor systems

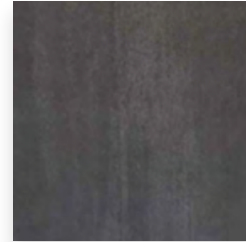
JLR



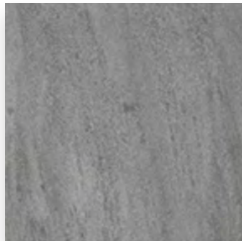
JLR101



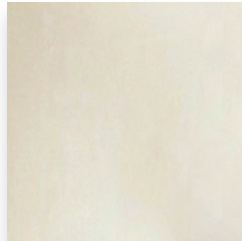
JLR102



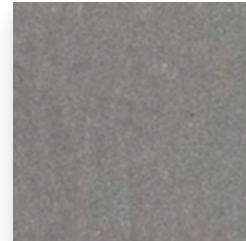
JLR106



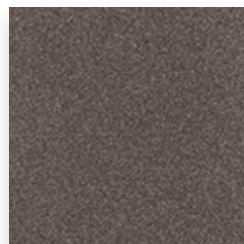
JLR107



JLR108



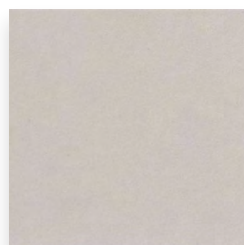
JLR109



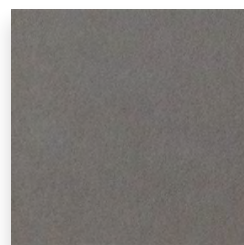
JLR110



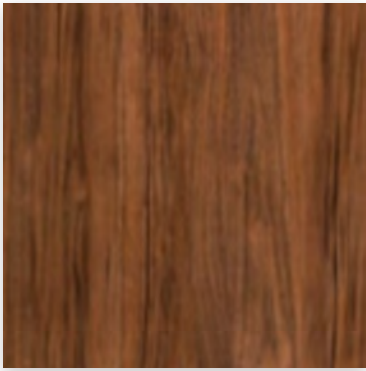
JLR111



JLR112



JLR113



JLR 101

Color: Dijan Walnut

Finish: Natural

Size: 24" x 24" (nominal)

Below: actual color varies, example is only representative



Grout: Laticrete Permacolor Select 89 Smoke Grey

Thinset: LHT Plus



JLR 102

Color: iWhite

Finish: Polished

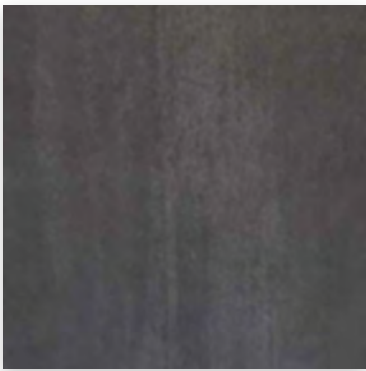
Size: 24" x 24" (nominal)

Below: actual color varies, example is only representative



Grout: Laticrete Permacolor Select 89 Smoke Grey

Thinset: LHT Plus



JLR 106

Color: Nero Charcoal

Finish: Brightfinish | Matte

Size: 24" x 24" (nominal)

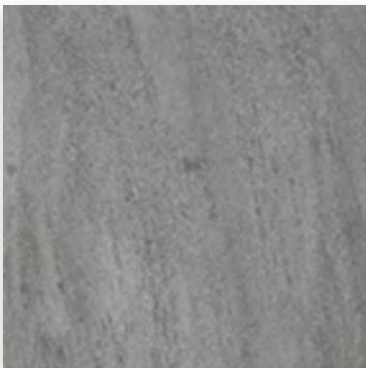
brightfinish
ultra-cleanable technology

Below: actual color varies, example is only representative



Grout: Laticrete Permacolor Select 89 Smoke Grey

Thinset: LHT Plus



JLR 107

Color: Toscano Deep Grey

Finish: Brightfinish | Natural

Size: 24" x 24" (nominal)

brightfinish
ultra-cleanable technology

Below: actual color varies, example is only representative



Grout: Laticrete Permacolor Select 89 Smoke Grey

Thinset: LHT Plus

Note on installation: *"Tile to be installed with the linear direction of the stone pattern. Tile should NOT be installed in a 90 degree pattern that off-sets the linear pattern direction."*





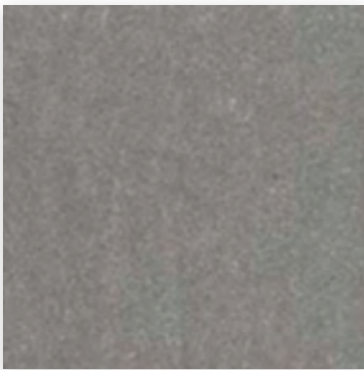
JLR 108

Color: iWhite
Finish: Brightfinish | Matte
Size: 24" x 24" (nominal)
brightfinish
 ultra-cleanable technology

Below: actual color varies, example is only representative



Grout: Laticrete Permacolor Select 89 Smoke Grey
Thinset: LHT Plus



JLR 109

Color: Grigio Deep Grey
Finish: Brightfinish | Matte
Size: 12" x 24" (nominal)
brightfinish
 ultra-cleanable technology

Below: actual color varies, example is only representative



Grout: Laticrete Permacolor 89 Smoke Grey
Thinset: LHT Plus

Installation

See AutoStone recommended 09300 specifications for thinset standards on concrete substrate and AutoStone recommended installation standards.

Thinset Installation Method (For Floor Tiles)

- Thinset mortar installation minimum. ANSI A118.4 (polymer modified). Recommended 100% coverage for tile.
- Grout to be a high-performance system with stain resistant properties. Installation to be 1/8" to 3/16" width.
- Grout specification minimum: ANSI A118.7.
- See AutoStone supplied setting materials for actual product codes and grout color.

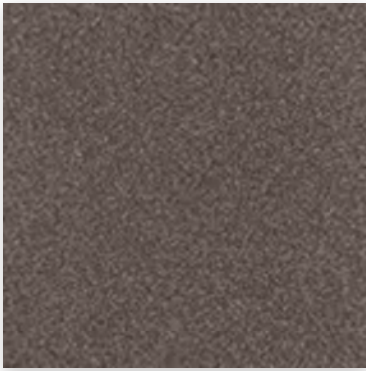
Warranty

AutoStone offers a tile materials defect warranty.

AutoStone offers an installation warranty when warranty services are contracted through AutoStone. Length of Warranty is dependent upon contracted term. AutoStone does not offer any warranty of any kind when a third party installer is involved except the tile materials defect warranty. AutoStone has put together a unique package of products with Laticrete to provide contractors a 10 year warranty from Laticrete, when the purchase the correct materials directly through AutoStone.

See Warranties on our website for specifics.





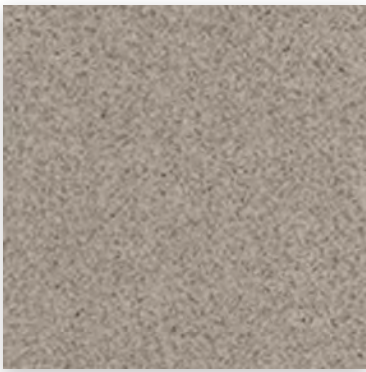
JLR 110

Color: Elba
Finish:
 SLR-11 Workshop Textured
 R 11 A+B+C+
Size: 8" x 8" (nominal)

Below: actual color varies, example is only representative



Grout: Laticrete Permacolor Select 89 Smoke Grey
Thinset: LHT Plus



JLR 111

Color: Cefalu Grey
Finish:
 SLR-11 Workshop Textured
 R 11 A+B+C+
Size: 8" x 8" (nominal)

Below: actual color varies, example is only representative



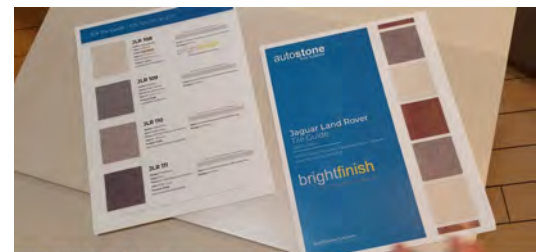
Grout: Laticrete Permacolor Select 89 Smoke Grey
Thinset: LHT Plus

brightfinish

ultra-cleanable technology

AutoStone JLR 106, 108, 109 (JLR Showroom) Tiles with Brightfinish Reduce Stains and Clean Easier

The brightfinish surface aids them in their cleaning practices and enhances your showroom appearance. AutoStone tile is much easier to clean for JLR dealers. AutoStone brightfinish eliminates* concerns with your tile showing haze, dirt, grime, etc., (*with proper cleaning practices). Tile with brightfinish doesn't easily stain, especially with tire-bright, or similar tire dressing materials.



autostone floor systems brightfinish ultra-cleanable technology JLR 108 Tile

Click the image above for a Brightfinish demonstration

The result? Better appearing JLR stores, happier dealers!

AutoStone JLR 106, 108, 109 (JLR Showroom) Tiles Reduce STF (Slip, Trip, Fall) Risk.

The DCOF (dynamic coefficient of friction) rating for this tile increases with this finish. Our brightfinish embeds micro-granule traction elements which increase the slip-resistance.

The result: JLR stores with floors that reduce STF risk in showrooms. Dealers, employees and customers benefit!





JLR 110 Alloy Grey

Series: eShop2USA
Color: Alloy Grey
Finish: SLR Shop Textured
Size: (U.S. Nominal Dimensions)
 8" x 8"



Below: actual color varies, example is only representative



Grout: Laticrete Permacolor 89 Smoke Grey
Thinset: LHT Plus



JLR 111 Genesis-Carbon Black

Series: eShop2USA
Color: Genesis-Carbon Black
Finish: SLR Shop Textured
Size: (U.S. Nominal Dimensions)
 8" x 8"



Below: actual color varies, example is only representative



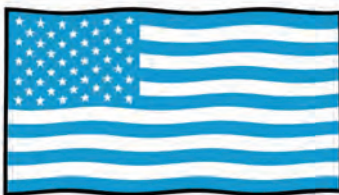
Grout: Laticrete Permacolor Select 89 Smoke Grey
Thinset: LHT Plus



Material Availability

MADE IN USA

Product stocked in USA warehouse
 1 week preparation + ground shipping



Easy to work with,
 helpful, & supportive



The MOST
 affordable tile choice!



JLR 110 Alloy Grey

Series: [DriveSeriesUSA](#)

Color: Alloy Grey

Finish: Brightfinish | R12 Textured Surface:

High Traction

Size: 8" x 8" (U.S. Nominal Dimensions)

driveseries
USA

brightfinish
ultra-cleanable technology



MADE IN
USA

Below: actual color varies, example is only representative



Grout: Laticrete Permacolor 89 Smoke Grey

Thinset: LHT Plus



CT-7 Genesis-Carbon Black

Series: [DriveSeriesUSA](#)

Color: Genesis-Carbon Black

Finish: Brightfinish | R12 Textured

Surface: High Traction

Size: 8" x 8" (U.S. Nominal Dimensions)

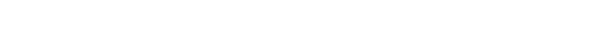
driveseries
USA

brightfinish
ultra-cleanable technology



MADE IN
USA

Below: actual color varies, example is only representative



Below: actual color varies, example is only representative

Grout: Laticrete Permacolor Select 89 Smoke Grey

Thinset: LHT Plus

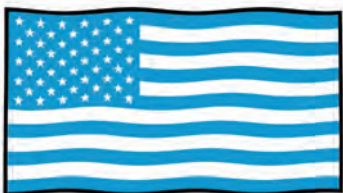
driveseries!
advanced surface technology

Material Availability

MADE IN USA

Product stocked in USA warehouse

1 week preparation + ground shipping



Manufactured Declared Uses

Evaluate for use in automotive workshop and service drive environments.

4.1.4 (Exterior, Wet) - level outdoor spaces walkways, sidewalks, where such floors may be walked upon when wet (excluding ice or snow) if level, clean, maintained and free of standing water or other contaminants.

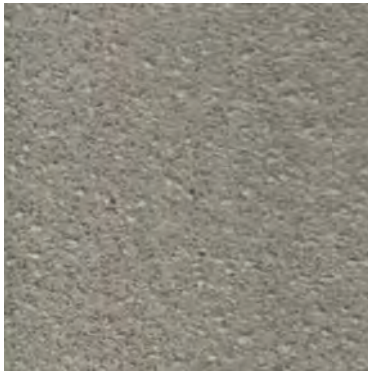
4.1.5 (Oils/Greases) - level areas regularly exposed to automotive fluids, etc., so long as such floors are level, regularly cleaned, maintained and free of standing water and contaminant build-up. Consult with your architect to determine dealership practices. **Review ANSI A326.3 2021 standard.**

Declared Product Use & DCOF Requirement

Meets and exceeds .55 DCOF rating as required for ANSI A326.3 4.1.3 Exterior Wet.

Easy to work with,
helpful, & supportive

The MOST
affordable tile choice!



JLR 110 Alloy Grey

Series: [Enviroshop](#)

Color: Alloy Grey

Finish: Brightfinish | Textured

Surface: Medium Traction

Size: 12" x 12" (U.S. Nominal Dimensions)

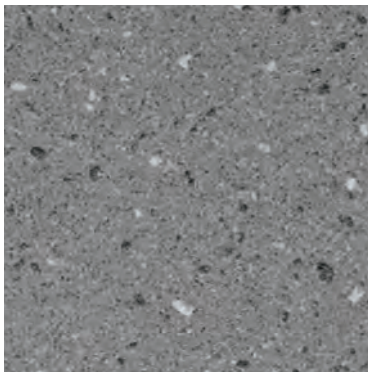


Below: actual color varies, example is only representative



Grout: Laticrete Permacolor Select 89 Smoke Grey

Thinset: LHT Plus



JLR 110 Smoke Grey

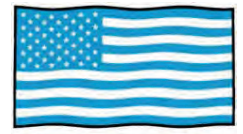
Series: [Enviroshop](#)

Color: Smoke Grey

Finish: Brightfinish | Textured

Surface: Medium Traction

Size: 12" x 12" (U.S. Nominal Dimensions)



MADE IN USA

Below: actual color varies, example is only representative



Grout: Laticrete Permacolor Select 89 Smoke Grey

Thinset: LHT Plus



JLR 111 Carbon Black

Series: [Enviroshop](#)

Color: Carbon Black

Finish: Brightfinish | Textured

Surface: Medium Traction

Size: 12" x 12" (U.S. Nominal Dimensions)



Below: actual color varies, example is only representative



Grout: Laticrete Permacolor Select 89 Smoke Grey

Thinset: LHT Plus



Material Availability

- Stocked USA ■ Alloy Grey
- Stocked USA ■ Smoke Grey
- Stocked USA ■ Carbon Black
- **STOCKED USA**
Product stocked in USA warehouse
1 week preparation + ground shipping

Manufacturer

AutoStone Floor Systems

Product Use Category 4.1.3 Interior, Wet Plus (IW+)

Evaluate for interior use in automotive workshop and service drive environments with high speed doors and tech locker rooms. Enviroshop is medium traction surface. For interior applications, with good drainage. Floors walked on when wet should be level, clean, maintained and free of standing water or other contaminants. Should be cleaned with frequent maintenance to keep clean.

DCOF

Meets and exceeds .50 DCOF rating as required for ANSI A326 4.1.3 (IW+)



CT-6 Alloy Grey

Series: DriveSeriesUSA
Color: Alloy Grey
Finish: SLR Shop Textured **Size:**
 12" x 12" (nominal size)



Below: actual color varies, example is only representative



Grout: Laticrete Permacolor 89 Smoke Grey
Thinset: LHT Plus



CT-7 Genesis-Carbon Black

Series: DriveSeriesUSA
Color: Genesis-Carbon Black
Finish: SLR Shop Textured
Size: 12" x 12" (nominal size)



Below: actual color varies, example is only representative



Grout: Laticrete Permacolor Select 89 Smoke Grey
Thinset: LHT Plus

Description

A permanent enhanced porcelain technology floor system. Elevated traction provides a better surface to manage STF (slip, trip, and fall) risk in your automotive service drive, workshop and tech locker room shower areas. See declared uses below. Should be cleaned with frequent maintenance to keep clean and free of contamination and debris when dealership is operating. Spot spills should be removed immediately and not left on surface. Floor cleaning should include use of de-greasing chemical, floor scrubber sweeper machine with wet vacuum to suck-up dirty water and debris as part of cleaning process.

Advantages

1. Advanced surface technology to better manage STF (slip, trip & fall) risk.
2. Surface has repeating lines elevated above the bed of the tile. Designed for greater foot, shoe-sole traction.
3. Will not permanently stain or darken when properly cleaned.

Manufactured Declared Uses

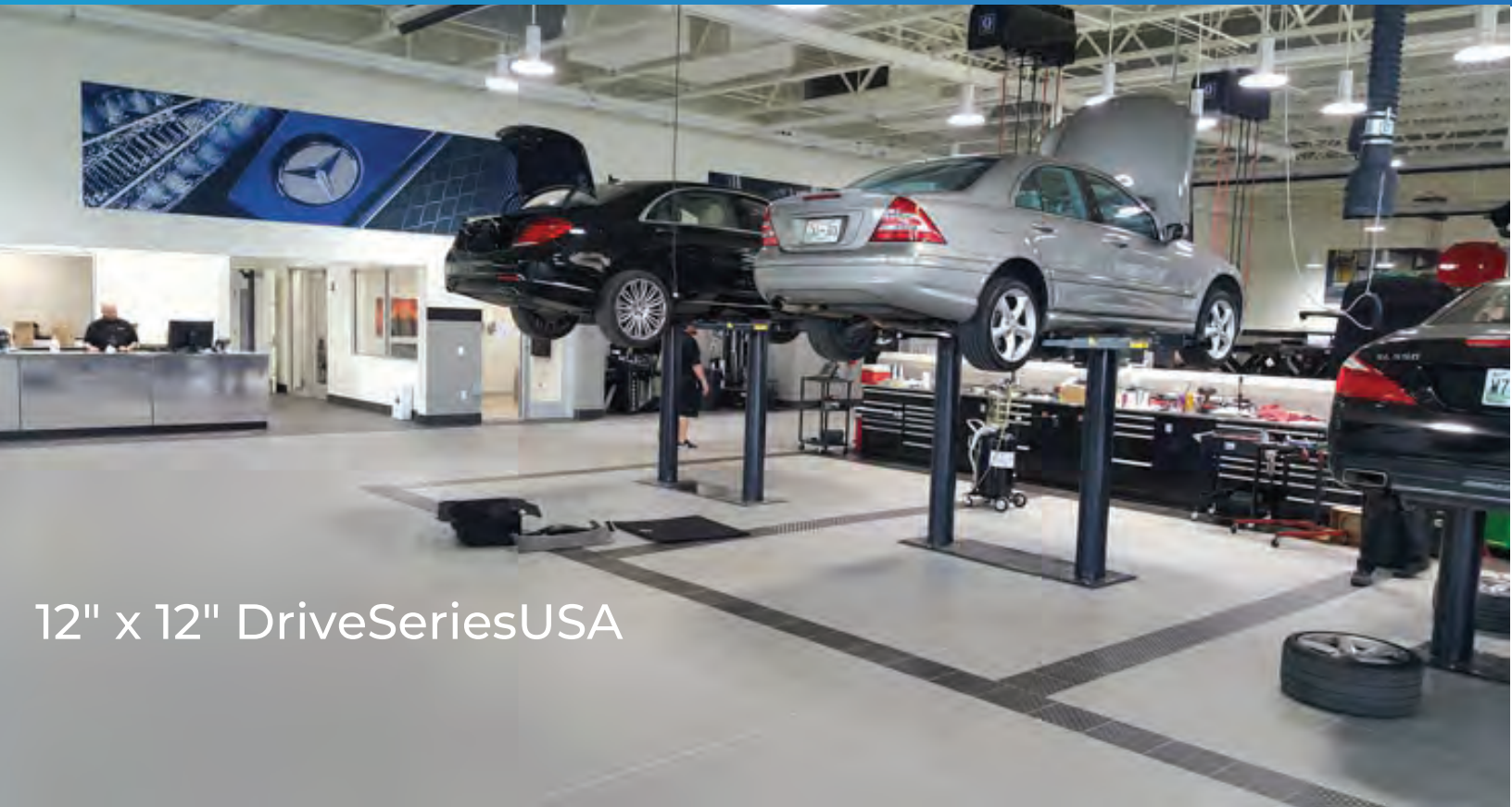
Evaluate for use in automotive workshop and service drive environments.

4.1.4 (Exterior, Wet) - level outdoor spaces walkways, sidewalks, where such floors may be walked upon when wet (excluding ice or snow) if level, clean, maintained and free of standing water or other contaminants.

4.1.5 (Oils/Greases) - level areas regularly exposed to automotive fluids, etc., so long as such floors are level, regularly cleaned, maintained and free of standing water and contaminant build-up. Consult with your architect to determine dealership practices. **Review ANSI A326.3 2021 standard.**

Declared Product Use & DCOF Requirement

Meets and exceeds .55 DCOF rating as required for ANSI A326.3 4.1.3 Interior Wet Plus (IW+), 4.1.4 Exterior Wet (EW), and 4.1.5 Oils/Grease (O/G).



brightfinish
ultra-cleanable technology

Brightfinish Ultra-Cleanable Technology

Brightfinish is a permanent sealant baked-in during kiln-firing process. The Brightfinish permanent sealant aids dealership with their cleaning practices by sealing surface micropores which trap and hold-on to rubber transfer, grease, oil or other contaminants.

Enhanced Impervious Surface Technology

An impervious tile is the highest performance standard in the porcelain tile industry. The definition of an impervious tile is a surface that absorbs moisture between 0.5% to 0.001%. At AutoStone, we think that 0.5% is too much absorbency, and in an automotive dealership will cause tiles to absorb oil, grease, petroleum, gasoline and other contaminants. When this happens, your tile surface will darken over use and this leads to potential hazards such as STF (slip, trip and fall) events. Petroleum and oils soaked surfaces can pose other hazards when not properly removed with regularly scheduled and proper cleaning practices. With the addition of our brightfinish we enhance our impervious tiles and reduce their absorbency to levels at the lowest end of the spectrum (0.001% or less). This means nothing is absorbed by an AutoStone workshop or service drive floor tile. AutoStone workshop floor systems are premium floor systems which are designed to resist staining and be easier to clean.

Limitations

Surface is a non-vitreous (impervious) enhanced porcelain tile. Oil, grease and all contaminants will remain on surface until properly cleaned and removed.

Not for use in carwash areas where high volume water and/or high pressure water systems are used.



JLR 112

Color: Granita Grey

Finish: Satin

Size: 8" X 8" (nominal)

Below: actual color varies, example is only representative



Grout: Laticrete Permacolor 89 Smoke Grey

Thinset: LHT Plus



JLR 113

Color: Anthracite Grey

Finish: Satin

Size: 8" X 8" (nominal)

Below: actual color varies, example is only representative



Grout: Laticrete Permacolor 89 Smoke Grey

Thinset: LHT Plus

Build with AutoStone.

Our program supports Jaguar Land Rover dealers with the highest quality, most affordable and comprehensive floor tile system for your dealership project. Affordable, high-quality, and easy to do business with are what you will experience with AutoStone. Call us today to support your project.

Questions & Information

Email: jlr@autostoneusa.com

Phone: 214-393-4875 (JLR Line)

AutoStone has a team that supports your Jaguar Land Rover project. If your call is not answered immediately, you will receive a return call no later than one business day. All emails are monitored and will be responded to quickly. We are here to support your project!



Contact Information

Email: jlr@autostoneusa.com

Phone: 214-393-4875 (Main Phone)

