



BMW Global Initiative Program (CORA). AutoStone Setting Materials & Grout Colors 2017 v 11

These grouts provide your BMW (CORA) dealership the best solution for a stain resistant grout surface. This premium grout from AutoStone provides your dealership the best solution for cleaner floors and longevity.

Please submit to your architect for review and approval for use in your BMW Global Initiative Program (CORA) certified compliant facility.

Additionally, we have listed our recommended setting materials for use on your project. Your project may have different site conditions that may require different materials. Let us know what your site conditions require and we can revise and/or modify your setting material products.

Installation Method:

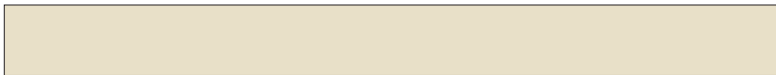
- Thinset mortar installation minimum. ANSI A118.4 (polymer modified).
- Grout to be a high-performance system with stain resistant properties. Installation to be 1/8" to 3/16" width.
- Grout specification minimum: ANSI A118.7.
- See AutoStone supplied setting materials for actual product codes and grout color.

Tile Specification:

Series: Grande
Color: US.Sand 836
Finish: Natural | Matte (R-9)
Size: 24" x 24" - or 12" x 24" (nominal dimension)
Thickness: 8 mm
Product Code: see specifications above right

Grout Specification:

Manufacturer: North American Adhesives
Product: AS.NA4800.EverColor.MPG
Color: AS.DakotaDunes.551
Example below: *actual color varies, example is only representative.*



Adhesive Specification:

Manufacturer: North American Adhesives
Product: AS.NA3800.MagnaFlex
Color: Grey

Recommended Cleaner:

Manufacturer: AutoStone Floor Systems
Product: **dealerclean**
Note: See product for dilution ratio and recommended cleaning practices.

Warranty:

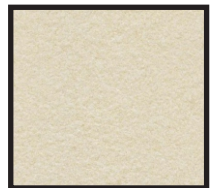
This setting material program is backed by a Mapei (25) year setting materials system warranty. See the North American Adhesives / Mapei warranty for details, specifics and requirements.

Specification Submittal:

Please use this as your reference sheet for grout specifications and our submittal for your BMW project. If you have any questions, please contact us at:

bmw@autostoneusa.com
800-387-5643 (toll free)

Showroom Tile
Series: Grande
Color: US.Sand
836



12" x 24"
-or-
24" x 24"
Natural|Matte

Product Code:
AS.Grande.US.Sand.836
Finish: R-9
(Natural | Matte)



BMW Global Initiative Program (CORA). AutoStone Setting Materials & Grout Colors 2017 v 11

These grouts provide your BMW (CORA) dealership the best solution for a stain resistant grout surface. This premium grout from AutoStone provides your dealership the best solution for cleaner floors and longevity.

Please submit to your architect for review and approval for use in your BMW Global Initiative Program (CORA) certified compliant facility.

Additionally, we have listed our recommended setting materials for use on your project. Your project may have different site conditions that may require different materials. Let us know what your site conditions require and we can revise and/or modify your setting material products.

Installation Method:

- Thinset mortar installation minimum. ANSI A118.4 (polymer modified).
- Grout to be a high-performance system with stain resistant properties. Installation to be 1/8" to 3/16" width.
- Grout specification minimum: ANSI A118.7.
- See AutoStone supplied setting materials for actual product codes and grout color.

Tile Specification:

Series: Grande
Color: US.Anthracite 838
Finish: Natural | Matte (R-9)
Size: 24" x 24" - or 12" x 24" (nominal dimension)
Thickness: 8 mm
Product Code: see specifications above right

Grout Specification:

Manufacturer: North American Adhesives
Product: AS.NA4800.EverColor.MPG
Color: AS.SmokeyCoal.536
Example below: *actual color varies, example is only representative.*



Adhesive Specification:

Manufacturer: North American Adhesives
Product: AS.NA3800.MagnaFlex
Color: Grey

Recommended Cleaner:

Manufacturer: AutoStone Floor Systems
Product: **dealerclean**
Note: See product for dilution ratio and recommended cleaning practices.

Warranty:

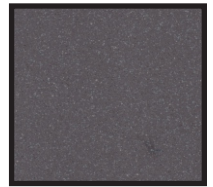
This setting material program is backed by a Mapei (25) year setting materials system warranty. See the North American Adhesives / Mapei warranty for details, specifics and requirements.

Specification Submittal:

Please use this as your reference sheet for grout specifications and our submittal for your BMW project. If you have any questions, please contact us at:

bmw@autostoneusa.com
800-387-5643 (toll free)

Showroom Tile
Series: Grande
Color:
US.Anthracite 838



12" x 24"
-or-
24" x 24"
Natural|Matte

Product Code:
AS.Grande.US.Anthracit
e.838
Finish: R-9
(Natural | Matte)



BMW Global Initiative Program (CORA). AutoStone Setting Materials & Grout Colors 2017 v 11

These grouts provide your BMW (CORA) dealership the best solution for a stain resistant grout surface. This premium grout from AutoStone provides your dealership the best solution for cleaner floors and longevity.

Please submit to your architect for review and approval for use in your BMW Global Initiative Program (CORA) certified compliant facility.

Additionally, we have listed our recommended setting materials for use on your project. Your project may have different site conditions that may require different materials. Let us know what your site conditions require and we can revise and/or modify your setting material products.

Installation Method:

- Thinset mortar installation minimum. ANSI A118.4 (polymer modified).
- Grout to be a high-performance system with stain resistant properties. Installation to be 1/8" to 3/16" width.
- Grout specification minimum: ANSI A118.7.
- See AutoStone supplied setting materials for actual product codes and grout color.

Tile Specification:

Series: Grande
Color: US.Anthracite 838
Finish: Bushammered (R-11)
Size: 12" x 24"^(nominal dimension)
Thickness: 8 mm
Product Code: see specifications above right

Grout Specification:

Manufacturer: North American Adhesives
Product: AS.NA4800.EverColor.MPG
Color: AS.SmokeyCoal.536
Example below: *actual color varies, example is only representative.*

Adhesive Specification:

Manufacturer: North American Adhesives
Product: AS.NA3800.MagnaFlex
Color: Grey

Recommended Cleaner:

Manufacturer: AutoStone Floor Systems
Product: **dealerclean**
Note: See product for dilution ratio and recommended cleaning practices.

Warranty:

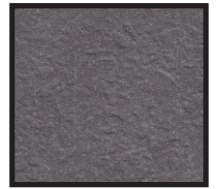
This setting material program is backed by a Mapei (25) year setting materials system warranty. See the North American Adhesives / Mapei warranty for details, specifics and requirements.

Specification Submittal:

Please use this as your reference sheet for grout specifications and our submittal for your BMW project. If you have any questions, please contact us at:

bmw@autostoneusa.com
800-387-5643 (toll free)

Showroom Tile
Series: Grande
Color:
US.Anthracite 838



12" x 24"
Bushammered

Product Code:
AS.Grande.US.Anthracite.
838
Finish: R-11
(Bushammered)



BMW Global Initiative Program (CORA). AutoStone Setting Materials & Grout Colors 2017 v 11

These grouts provide your BMW (CORA) dealership the best solution for a stain resistant grout surface. This premium grout from AutoStone provides your dealership the best solution for cleaner floors and longevity.

Please submit to your architect for review and approval for use in your BMW Global Initiative Program (CORA) certified compliant facility.

Additionally, we have listed our recommended setting materials for use on your project. Your project may have different site conditions that may require different materials. Let us know what your site conditions require and we can revise and/or modify your setting material products.

Installation Method:

- Thinset mortar installation minimum. ANSI A118.4 (polymer modified).
- Grout to be a high-performance system with stain resistant properties. Installation to be 1/8" to 3/16" width.
- Grout specification minimum: ANSI A118.7.
- See AutoStone supplied setting materials for actual product codes and grout color.

Tile Specification:

Series: Wood
Color: Walnut 140
Finish: Bushammered (R-11)
Size: 6" x 24" -or- 6" x 48" (nominal dimension)
Thickness: 8 mm
Product Code: see specifications above right

Grout Specification:

Manufacturer: North American Adhesives
Product: AS.NA4800.EverColor.MPG
Color: AS.DarkMolasses.507
Example below: *actual color varies, example is only representative.*

Adhesive Specification:

Manufacturer: North American Adhesives
Product: AS.NA3800.MagnaFlex
Color: Grey

Recommended Cleaner:

Manufacturer: AutoStone Floor Systems
Product: **dealerclean**
Note: See product for dilution ratio and recommended cleaning practices.

Warranty:

This setting material program is backed by a Mapei (25) year setting materials system warranty. See the North American Adhesives / Mapei warranty for details, specifics and requirements.

Specification Submittal:

Please use this as your reference sheet for grout specifications and our submittal for your BMW project. If you have any questions, please contact us at:

bmw@autostoneusa.com
800-387-5643 (toll free)

Showroom Tile
Series: Wood
Color:
Walnut.140



6" x 24"
-or-
6" x 48"
Natural|Matte

Product Code:
Walnut 140
Finish: (R-9)
Natural|Matte



BMW Global Initiative Program (CORA). AutoStone Setting Materials & Grout Colors 2017 v 11

These grouts provide your BMW (CORA) dealership the best solution for a stain resistant grout surface. This premium grout from AutoStone provides your dealership the best solution for cleaner floors and longevity.

Please submit to your architect for review and approval for use in your BMW Global Initiative Program (CORA) certified compliant facility.

Additionally, we have listed our recommended setting materials for use on your project. Your project may have different site conditions that may require different materials. Let us know what your site conditions require and we can revise and/or modify your setting material products.

Installation Method:

- Thinset mortar installation minimum. ANSI A118.4 (polymer modified).
- Grout to be a high-performance system with stain resistant properties. Installation to be 1/8" to 3/16" width.
- Grout specification minimum: ANSI A118.7.
- See AutoStone supplied setting materials for actual product codes and grout color.

Tile Specification:

Series: Grande
Color: US.Grey.840
Finish: Natural | Matte (R-9)
Size: 12" x 24" (nominal dimension)
Thickness: 8 mm
Product Code: see specifications above right

Grout Specification:

Manufacturer: North American Adhesives
Product: AS.NA4800.EverColor.MPG
Color: AS.MontanaGray.524
Example below: *actual color varies, example is only representative.*



Adhesive Specification:

Manufacturer: North American Adhesives
Product: AS.NA3800.MagnaFlex
Color: Grey

Recommended Cleaner:

Manufacturer: AutoStone Floor Systems
Product: **dealerclean**
Note: See product for dilution ratio and recommended cleaning practices.

Warranty:

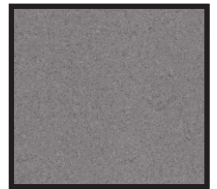
This setting material program is backed by a Mapei (25) year setting materials system warranty. See the North American Adhesives / Mapei warranty for details, specifics and requirements.

Specification Submittal:

Please use this as your reference sheet for grout specifications and our submittal for your BMW project. If you have any questions, please contact us at:

bmw@autostoneusa.com
800-387-5643 (toll free)

Bathroom
Series: Grande
Color:
USGrey.840



12" x 24"
Natural|Matte

Product Code:
AS.Grande.US.Grey.840
Finish: R-9
(Natural | Matte)



BMW Global Initiative Program (CORA). AutoStone Setting Materials & Grout Colors 2017 v 11

These grouts provide your BMW (CORA) dealership the best solution for a stain resistant grout surface. This premium grout from AutoStone provides your dealership the best solution for cleaner floors and longevity.

Showroom
(M Platform Display)
Series: Solids
Color: White.900

Please submit to your architect for review and approval for use in your BMW Global Initiative Program (CORA) certified compliant facility.

Additionally, we have listed our recommended setting materials for use on your project. Your project may have different site conditions that may require different materials. Let us know what your site conditions require and we can revise and/or modify your setting material products.



24" x 24"
Polished

Product Code:
Solids.White.900
Finish: Polished

Installation Method:

- Thinset mortar installation minimum. ANSI A118.4 (polymer modified).
- Grout to be a high-performance system with stain resistant properties. Installation to be 1/8" to 3/16" width.
- Grout specification minimum: ANSI A118.7.
- See AutoStone supplied setting materials for actual product codes and grout color.

Tile Specification:

Series: Solids
Color: White.900
Finish: Polished
Size: 24" x 24" (nominal dimension)
Thickness: 8 mm
Product Code: see specifications above right

Recommended Cleaner:

Manufacturer: AutoStone Floor Systems
Product: **dealerclean**
Note: See product for dilution ratio and recommended cleaning practices.

Grout Specification:

Manufacturer: North American Adhesives
Product: AS.NA4800.EverColor.MPG
Color: AS.AspenSnow.503
Example below: *actual color varies, example is only representative.*



Warranty:

This setting material program is backed by a Mapei (25) year setting materials system warranty. See the North American Adhesives / Mapei warranty for details, specifics and requirements.

Adhesive Specification:

Manufacturer: North American Adhesives
Product: AS.NA3800.MagnaFlex
Color: Grey

Specification Submittal:

Please use this as your reference sheet for grout specifications and our submittal for your BMW project. If you have any questions, please contact us at:

bmw@autostoneusa.com
800-387-5643 (toll free)



BMW Global Initiative Program (CORA). AutoStone Setting Materials & Grout Colors 2017 v 11

These grouts provide your BMW (CORA) dealership the best solution for a stain resistant grout surface. This premium grout from AutoStone provides your dealership the best solution for cleaner floors and longevity.

Please submit to your architect for review and approval for use in your BMW Global Initiative Program (CORA) certified compliant facility.

Additionally, we have listed our recommended setting materials for use on your project. Your project may have different site conditions that may require different materials. Let us know what your site conditions require and we can revise and/or modify your setting material products.

Installation Method:

- Thinset mortar installation minimum. ANSI A118.4 (polymer modified).
- Grout to be a high-performance system with stain resistant properties. Installation to be 1/8" to 3/16" width.
- Grout specification minimum: ANSI A118.7.
- See AutoStone supplied setting materials for actual product codes and grout color.

Tile Specification:

Series: Grande
Color: Snow White
Finish: Bright
Size: 4" x 10" (nominal dimension)
Thickness: 8 mm
Product Code: see specifications above right

Grout Specification:

Manufacturer: North American Adhesives
Product: AS.NA4800.EverColor.MPG
Color: AS.AspenSnow.503
Example below: *actual color varies, example is only representative.*



Adhesive Specification:

Manufacturer: North American Adhesives
Product: AS.NA3800.MagnaFlex
Color: Grey

Recommended Cleaner:

Manufacturer: AutoStone Floor Systems
Product: **dealerclean**
Note: See product for dilution ratio and recommended cleaning practices.

Warranty:

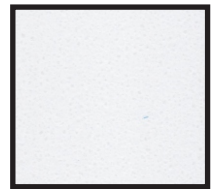
This setting material program is backed by a Mapei (25) year setting materials system warranty. See the North American Adhesives / Mapei warranty for details, specifics and requirements.

Specification Submittal:

Please use this as your reference sheet for grout specifications and our submittal for your BMW project. If you have any questions, please contact us at:

bmw@autostoneusa.com
800-387-5643 (toll free)

Bathroom Walls
Series:
US.WallTile
Color: Snow White



4" x 10"
Bright

Product Code:
US.WallTile.SnowWhite
Finish: Bright
(Natural | Matte)



BMW Global Initiative Program (CORA). AutoStone Setting Materials & Grout Colors 2017 v 11

These grouts provide your BMW (CORA) dealership the best solution for a stain resistant grout surface. This premium grout from AutoStone provides your dealership the best solution for cleaner floors and longevity.

Please submit to your architect for review and approval for use in your BMW Global Initiative Program (CORA) certified compliant facility.

Additionally, we have listed our recommended setting materials for use on your project. Your project may have different site conditions that may require different materials. Let us know what your site conditions require and we can revise and/or modify your setting material products.

Installation Method:

- Thinset mortar installation minimum. ANSI A118.4 (polymer modified).
- Grout to be a high-performance system with stain resistant properties. Installation to be 1/8" to 3/16" width.
- Grout specification minimum: ANSI A118.7.
- See AutoStone supplied setting materials for actual product codes and grout color.

Tile Specification:

Series: ClinkerShop Grande
Color: Grey
Finish: Secura R-11 textured
Size: 4" x 8" x 14/15 mm (nominal dimension)
Thickness: 14/15 mm
Product Code: see specifications above right

Grout Specification:

Manufacturer: North American Adhesives
Product: AS.NA4800.EverColor.MPG
Color: AS.MontannaGray.524
Example below: *actual color varies, example is only representative.*



Adhesive Specification:

Manufacturer: North American Adhesives
Product: AS.NA3220.MultiFlexPlus
Color: Gray

Recommended Cleaner:

Manufacturer: AutoStone Floor Systems
Product: **dealerclean**
Note: See product for dilution ratio and recommended cleaning practices.

Warranty:

This setting material program is backed by a Mapei (25) year setting materials system warranty. See the North American Adhesives / Mapei warranty for details, specifics and requirements.

Specification Submittal:

Please use this as your reference sheet for grout specifications and our submittal for your BMW project. If you have any questions, please contact us at:

bmw@autostoneusa.com
800-387-5643 (toll free)

ClinkerShop
Series: Grande
Color: Grey



4" x 8" x 14/15mm

Series: ClinkerShop
Finish: Secura
(R-11 / textured)



BMW Global Initiative Program (CORA). AutoStone Setting Materials & Grout Colors 2017 v 11

These grouts provide your BMW (CORA) dealership the best solution for a stain resistant grout surface. This premium grout from AutoStone provides your dealership the best solution for cleaner floors and longevity.

Please submit to your architect for review and approval for use in your BMW Global Initiative Program (CORA) certified compliant facility.

Additionally, we have listed our recommended setting materials for use on your project. Your project may have different site conditions that may require different materials. Let us know what your site conditions require and we can revise and/or modify your setting material products.

Installation Method:

- Thinset mortar installation minimum. ANSI A118.4 (polymer modified).
- Grout to be a high-performance system with stain resistant properties. Installation to be 1/8" to 3/16" width.
- Grout specification minimum: ANSI A118.7.
- See AutoStone supplied setting materials for actual product codes and grout color.

Tile Specification:

Series: ClinkerShop Grande
Color: Anthracita
Finish: Secura R-11 textured
Size: 4" x 8" x 14/15 mm (nominal dimension)
Thickness: 14/15 mm
Product Code: see specifications above right

Grout Specification:

Manufacturer: North American Adhesives
Product: AS.NA4800.EverColor.MPG
Color: AS.BlackDiamond.539
Example below: *actual color varies, example is only representative.*

Adhesive Specification:

Manufacturer: North American Adhesives
Product: AS.NA3220.MultiFlexPlus
Color: Grey

Recommended Cleaner:

Manufacturer: AutoStone Floor Systems
Product: **dealerclean**
Note: See product for dilution ratio and recommended cleaning practices.

Warranty:

This setting material program is backed by a Mapei (25) year setting materials system warranty. See the North American Adhesives / Mapei warranty for details, specifics and requirements.

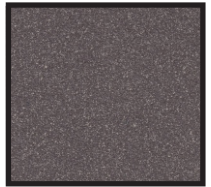
Specification Submittal:

Please use this as your reference sheet for grout specifications and our submittal for your BMW project. If you have any questions, please contact us at:

bmw@autostoneusa.com
800-387-5643 (toll free)

ClinkerShop

Series: Grande
Color: Anthracita



4" x 8" x 14/15mm

Series: ClinkerShop
Finish: Secura
(R-11 / textured)