

autostone

floor systems

Buick-GMC Suggested Floor Solution.

AutoStone specification sheet 2015 ver 01.15

AutoStone can provide your floor system in your Buick-GMC dealership. This series of tiles has been submitted to the EBE architectural team and been approved for use. These large format tiles provide your dealership a more modern and purposeful look and design.

You have a choice for your Buick-GMC brand complaint dealership, choose AutoStone.

Showroom Areas

Series: Solids.4

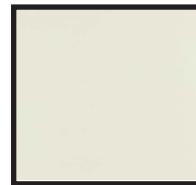
Colors: Blanco, Taupe, Negro

AutoStone Floor Systems for your:
Showroom

Available in: 24" x 24".



Solids.4
Blanco



Code:

24" x 24"
AS.S4.B.24246.N
(natural)

Solids.4
Taupe



Code:

24" x 24"
AS.S4.T.24246.N
(natural)

Solids.4
Negro



Code:

24" x 24"
AS.S4.N.24246.N
(natural)

Service Drive and Shop Areas

Series: Enviroshop

Colors: (2) options.

Alloy Grey (a uni-color body tile)
Carbon Black (a uni-color body tile)

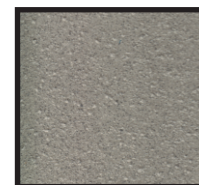
Alloy Grey is your field tile and Carbon Black is your lane or bay marker.

AutoStone Floor Systems for your:

Service Drive
New Car Delivery
Tech Lockers
Shop Work Areas



EnviroShop
Alloy Grey
Product Code:
AS.ES.1212.AG.T



12" x 12"
R- Shop
Textured

Bright finish
Rubber retardant
Slip resistant
surface

Exceeds
ANSI (A137.1 2012)

EnviroShop
Carbon Black
Product Code:
AS.ES.1212.CB.T



12" x 12"
R- Shop
Textured

Bright finish
Rubber retardant
Slip resistant
surface

Exceeds
ANSI (A137.1 2012)

Please contact AutoStone to receive your quote, call today! 800-387-5643 or email buick@autostoneusa.com.

slipresistant
textured floor surfaces

autostone

floor systems

Buick-GMC Suggested Floor Solution.

AutoStone specification sheet 2015 ver 01.15

AutoStone can provide your floor system in your Buick-GMC dealership. This program provides you a solution for blending both your Chevrolet and Buick-GMC combination stores with one size tile for the entire facility.

You have a choice for your Buick-GMC brand complaint dealership, choose AutoStone.

Showroom Areas

Series: Solids.4

Colors: Blanco, Taupe, Negro

AutoStone Floor Systems for your:
Showroom

Available in: 16" x 16" format to mix with Chevrolet for a unified Buick-GMC and Chevrolet blended facility.

Also in 12" x 12".

Service Drive and Shop Areas

Series: Enviroshop
Colors: (2) options.

AutoStone Floor Systems for your:
Service Drive
New Car Delivery
Tech Lockers
Shop Work Areas

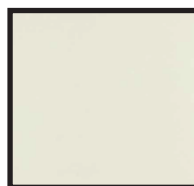
Alloy Grey (a uni-color body tile)
Carbon Black (a uni-color body tile)

Alloy Grey is your field tile and Carbon Black is your lane or bay marker.

Please contact AutoStone to receive your quote, call today! 800-387-5643 or email buick@autostoneusa.com

Solids.1
Color: Blanco

(2) sizes
(2) finishes



Code:

12" x 12"
AS.S1.B.1212.N
(natural)
AS.S1.B.1212.PO
(polished)

16" x 16"
AS.S1.B.1616.N
(natural)
AS.S1.B.1616.PO
(polished)

Solids.1
Color: Tan

(2) sizes
(2) finishes



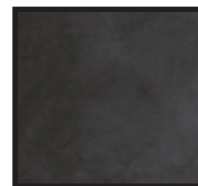
Code:

12" x 12"
AS.S1.T.1212.N
(natural)
AS.S1.T.1212.PO
(polished)

16" x 16"
AS.S1.T.1616.N
(natural)
AS.S1.T.1616.PO
(polished)

Solids.1
Color: Negro

(2) sizes
(2) finishes

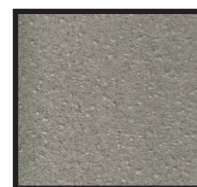


Code:

12" x 12"
AS.S1.N.1212.N
(natural)
AS.S1.N.1212.PO
(polished)

16" x 16"
AS.S1.N.1616.N
(natural)
AS.S1.N.1616.PO
(polished)

EnviroShop
Alloy Grey
Product Code:
AS.ES.1212.AG.T



12" x 12"
R- Shop
Textured

Bright finish
Rubber retardant
Slip resistant
surface

Exceeds
ANSI (A137.1 2012)

EnviroShop
Carbon Black
Product Code:
AS.ES.1212.CB.T



12" x 12"
R- Shop
Textured

Bright finish
Rubber retardant
Slip resistant
surface

Exceeds
ANSI (A137.1 2012)



slipresistant
textured floor surfaces