

## driveseries! Materials ASTM Schedule. 2015 ver 07

Performance and technical specifications for the **driveseries!** This product is a technical, industrial rated through-body, porcelain tile. This tile is produced in a calibrated format. Dimensions are nominal 8" x 8" size. The surface is rated with a V2 variance. For additional questions, please contact AutoStone Floor Systems at: 800-772-1473.

### driveseries

Color: Alloy Grey  
(field)



Finish: LINE.BRIGHT - R-12/A+B+C



### driveseries

Color: Smoke Grey  
(field)

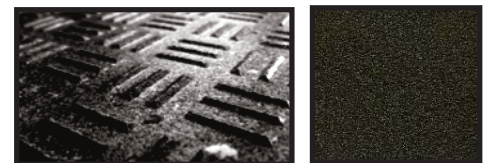


Finish: LINE.BRIGHT - R-12/A+B+C



### driveseries

Color: Carbon Black  
(lane marker)



Finish: LINE.BRIGHT - R-12/A+B+C



SURFACES DIMENSION AND QUALITIES	STANDARDS	RESULT "AutoStone Results"
Sides W 200X200 mm    Thickness 9.1 mm	UNI EN ISO 10545-2	+/- 0,1%    +/- 1,5%
Surface qualities: percentage of acceptable tiles per lot	UNI EN ISO 10545-2	> 95%
Straightness of sides	UNI EN ISO 10545-2	+/- 0,0%
Rectangularity	UNI EN ISO 10545-2	+/- 0,1%
Surface flatness: centre curvature	UNI EN ISO 10545-2	+/- 0,2%
Surface flatness: edge curvature	UNI EN ISO 10545-2	+/- 0,1%
Surface flatness: warpage	UNI EN ISO 10545-2	+/- 0,2%
<b>PHYSICAL PROPERTIES</b>		
Water mass absorbed in %	UNI EN ISO 10545-3	0,03
Average breaking load (N)	UNI EN ISO 10545-4	2500
Average <u>moduls</u> of rupture (N/mm2)	UNI EN ISO 10545-4	51
Average breaking strength (N)	UNI EN ISO 10545-4	2458
Abrasion volume (mm3)	UNI EN ISO 10545-6	152
Thermal expansion coefficient	UNI EN ISO 10545-8	6.2 MK <sup>1</sup>
Thermal shock resistance	UNI EN ISO 10545-9	resistant
Frost resistance	UNI EN ISO 10545-12	resistant
Resistance of the colors in the light	DIN 51094	resistant
<b>CHEMICAL PROPERTIES</b>		
Resistance to chemical products	UNI EN ISO 10545-13	resistant
Stain resistance	UNI EN ISO 10545-14	Class 5

For more information email us at: [hello@autostoneusa.com](mailto:hello@autostoneusa.com) or call at: 214-393-4875 (Main).