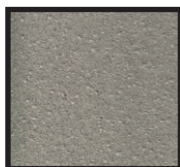


EnviroShop Materials ASTM Schedule. 2015 ver 08

Performance and technical specifications for the permanent shop floor system - Enviroshop. This product is a technical, industrial rated through-body, porcelain tile. This tile is produced in either a rectified or calibrated format. Dimensions are nominal 12" x 12" size. The surface is rated with a V2 variance. For additional questions, please contact AutoStone Floor Systems at: 800-772-1473.

EnviroShop

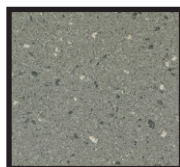
Color: Alloy Grey
Size: 12" x 12"



Code: AS.ES.AlloyGrey.1212.GF
Finish: Textured.

EnviroShop

Color: Smoke Grey
Size: 12" x 12"



Code: AS.ES.AlloyGrey.1212.GF
Finish: Textured.

EnviroShop

Color: Carbon Black
Size: 12" x 12"



Code: AS.ES.CarbonBlack.1212.GF
Finish: Textured.



Slip-and-Fall Standard	ANSI A137.1-2012 / 9.6.1	Exceeds DCOF .42 RESULT "AutoStone Results"
SURFACES DIMENSION AND QUALITIES	STANDARDS	
Sides W 300X300 mm Thickness 9.0 mm	UNI EN ISO 10545-2	+/- 0,1% +/- 1,5%
Surface qualities: percentage of acceptable tiles per lot	UNI EN ISO 10545-2	> 95%
Straightness of sides	UNI EN ISO 10545-2	+/- 0,0%
Rectangularity	UNI EN ISO 10545-2	+/- 0,1%
Surface flatness: centre curvature	UNI EN ISO 10545-2	+/- 0,2%
Surface flatness: edge curvature	UNI EN ISO 10545-2	+/- 0,1%
Surface flatness: warpage	UNI EN ISO 10545-2	+/- 0,2%
PHYSICAL PROPERTIES		
Water mass absorbed in %	UNI EN ISO 10545-3	0,03
Average breaking load (N)	UNI EN ISO 10545-4	2500
Average <u>modulus</u> of rupture (N/mm ²)	UNI EN ISO 10545-4	51
Average breaking strength (N)	UNI EN ISO 10545-4	2458
Abrasion volume (mm ³)	UNI EN ISO 10545-6	152
Thermal expansion coefficient	UNI EN ISO 10545-8	6.2 MK ¹
Thermal shock resistance	UNI EN ISO 10545-9	resistant
Frost resistance	UNI EN ISO 10545-12	resistant
Resistance of the colors in the light	DIN 51094	resistant
CHEMICAL PROPERTIES		
Resistance to chemical products	UNI EN ISO 10545-13	resistant
Stain resistance	UNI EN ISO 10545-14	Class 5

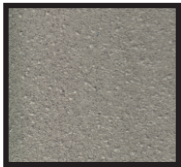
For more information email us at: hello@autostoneusa.com or call at: 214-393-4875 (Main).

EnviroShop Materials ASTM Schedule. 2015 ver 08

Performance and technical specifications for the permanent shop floor system - Enviroshop. This product is a technical, industrial rated through-body, porcelain tile. This tile is produced in either a rectified or calibrated format. Dimensions are nominal 12" x 12" size. The surface is rated with a V2 variance. For additional questions, please contact AutoStone Floor Systems at: 800-772-1473.

EnviroShop

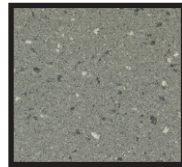
Color: Alloy Grey
Size: 12" x 12"



Code: AS.ES.AlloyGrey.1212.GF
Finish: Textured.

EnviroShop

Color: Smoke Grey
Size: 12" x 12"



Code: AS.ES.AlloyGrey.1212.GF
Finish: Textured.

EnviroShop

Color: Carbon Black
Size: 12" x 12"



Code: AS.ES.CarbonBlack.1212.GF
Finish: Textured.



Please note that no tile is slip proof. Nothing is slip proof. There are many things that you should address when you select products for your service drive and vehicle drop-off areas, or any and all areas of your dealership. Slip and fall accidents occur anywhere and everywhere. There are many things that impact your dealership and can either help or hinder your ability to manage this risk. These are things that include: facility design, protection from the weather, proper drainage, dealership cleaning practices, dealership management practices, access doors, floor slope and the number of customers you service daily. These are just a few of the many things that must be considered and factored in when you select the product you use for your service lane and shop areas.

Your architect is your primary resource for assuring that the floors specified for all areas of your dealership are the correct product and application. They have access to most of the necessary items to provide you the best or better tool to help manage the risk associated with slip and fall accidents. There are no guarantees that eliminate this risk. There are only better practices and products that help you better manage these risks.

AutoStone provides you a textured surface that meets and/or exceed the ANSI A137 standard referring to slip and fall ratings. The minimum threshold standard is .42 DCOF (dynamic coefficient of friction). The texture that appears on the surface of your sample may vary from production run to production run. However, at all times, the tile that is provided you is warranted to meet or exceed the DCOF minimal threshold value of .42.

Ask your AutoStone professional if you need additional information on our floor system.

For more information email us at: hello@autostoneusa.com or call at: 214-393-4875 (Main).