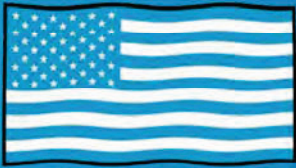


autostone usa



Kia 2.0 America Tile Guidebook

Kia Gallery Program
AutoStoneUSA.com/Kia



MADE IN AMERICA



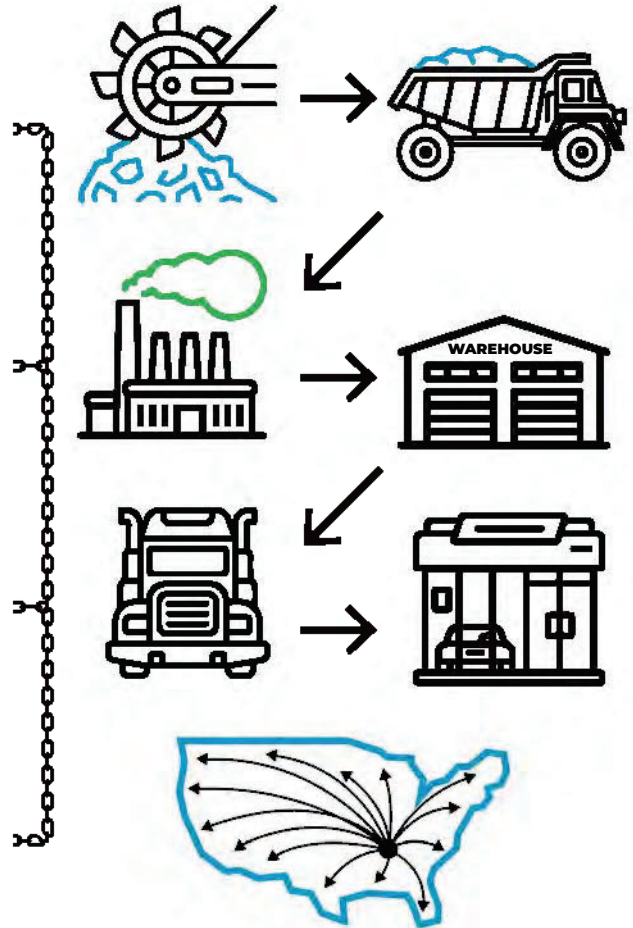
AutoStoneUSA.com

© 2025 AutoStone Floor Systems, All Rights Reserved.

Q2KD

QUARRY TO KILN DISTRIBUTION MODEL

- 1** **LOCALLY SOURCED & LOCALLY QUARRIED**
 - Elimination of trans-ocean shipping
 - US jobs, shorter supply chain
- 2** **DOMESTICALLY PRODUCED & LOCALLY WAREHOUSED**
 - Less shipping
 - Reduced carbon footprint
- 3** **CONSOLIDATED SHIPPING DIRECT TO YOUR DEALERSHIP**
 - Eliminates distribution shipping
 - Reduces use of fossil fuel
- 4** **DOMESTICALLY PRODUCED SMARTER & EFFICIENT DISTRIBUTION**
 - Better for the environment
 - Saves you money





T-1

Series: Concrete
Color: Smoke
Finish: Natural | Honed
Code: AS.11036373232NH
Size: 32" x 32" (U.S. Nominal Dimensions)

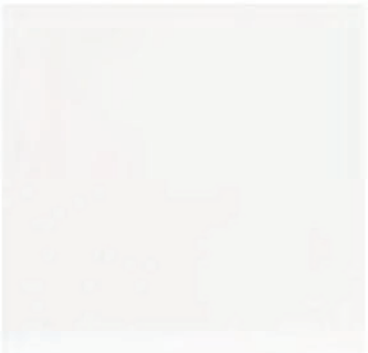


Important installation note for tile contractors: AutoStoneUSA, TCNA, NTCA, ANSI, and Kia 2.0 brand standards require tile installers open multiple boxes of tile prior to installing and "shuffle" tiles to assure a randomized tile pattern when installing.



T-2

Series: Amberwood Plank
Color: Maple Harvest
Finish: Natural
Size: 8" x 48" (U.S. Nominal Dimensions)



T-3

Series: Station America - A
Color: White
Finish: Matte
Code: ASUSA.25226E.PBA
Size: 4" x 16" (U.S. Nominal Dimensions)



T-4

Series: Station America - B
Color: White
Finish: Matte
Code: ASUSA.25237E.PBA
Size: 4" x 16" (U.S. Nominal Dimensions)





T-3

Series: Station America - A

Color: White

Finish: Matte

Code: ASUSA.25226E.PBA

Size: 4" x 16" (U.S. Nominal Dimensions)

Note: this is a NEW approved Kia 2.0 T-3 & T-4 tile option by AutoStoneUSA.

This is approved for your Kia project and is to be installed in the vertical direction as shown below.

This is a GREAT and modern look that Kia dealers LOVE. Ask your AutoStone representative for more information.



T-4

Series: Station America - B

Color: White

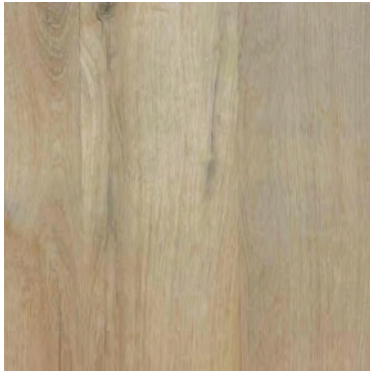
Finish: Matte

Code: ASUSA.25237E.PBA

Size: 4" x 16" (U.S. Nominal Dimensions)

NOW - Made in USA!





LVT-1 (Glue Down)

Series: LVT WoodPlank

Color: Birch Maple

Finish: Natural

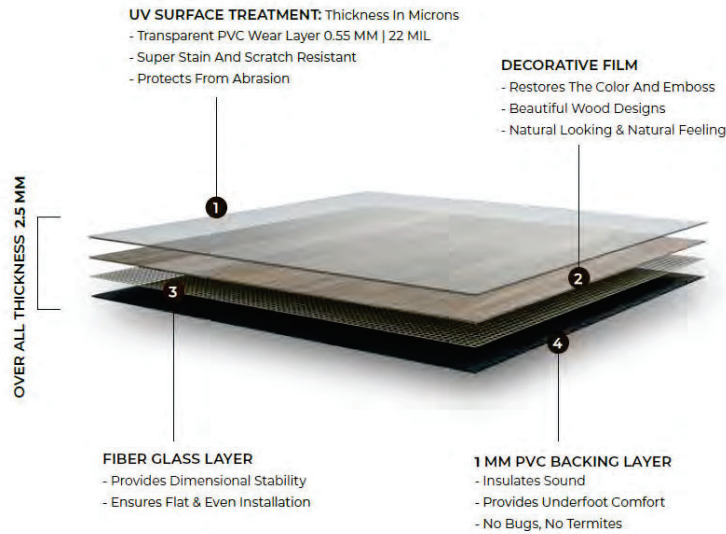
Size: 7.25" x 48" x 2.5 mm (thick) (U.S. Nominal Dimensions)

Wear Layer: 22 MIL | 0.55 mm



**USA
STOCKED**

LAYER DIAGRAM



See LVT Tile Guide for more details!

APPLICATIONS



Corporate
Offices



Commercial
Establishments



Retail
Outlets



Hotels &
Hospitality

FEATURES & BENEFITS



Superior Scratch
& Stain Resistant



Zero
Maintenance



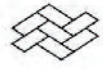
Easy
Clean



Natural Looking
Design



Heavy
Foot Traffic



Easy
Installation

SIZE: 7.25" x 48"

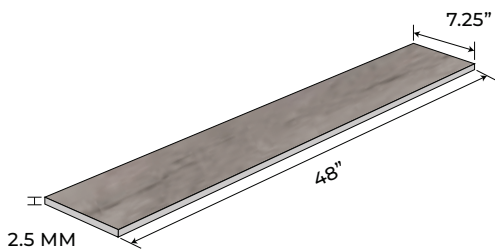
THICKNESS: 2.5 MM

WEAR LAYER: 22 MIL | 0.55 MM

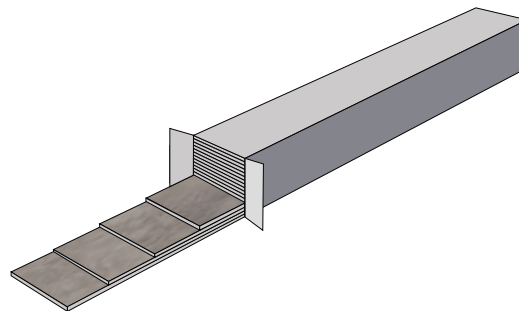
PIECES: 16 PER CARTON

COVERAGE: 38.66 SQ FT / 3.59 M² / CARTON

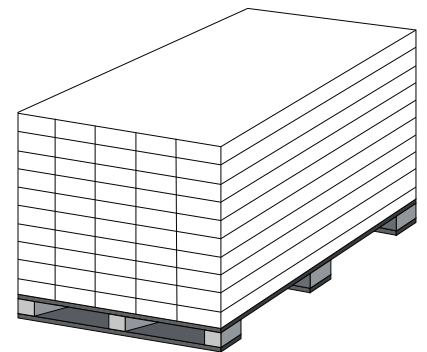
INSTALLATION: DRY BACK LVT



7.25" x 48" x 2.5 mm
184.15.00 mm x 1219.2 mm x 2.5 mm
22 MIL / 0.55 mm



16 PCS / CARTON
38.66 SQ.FT / CARTON
3.59 SQ.M / CARTON



50 CARTONS / PALLET



T-5 Tech Locker Walls

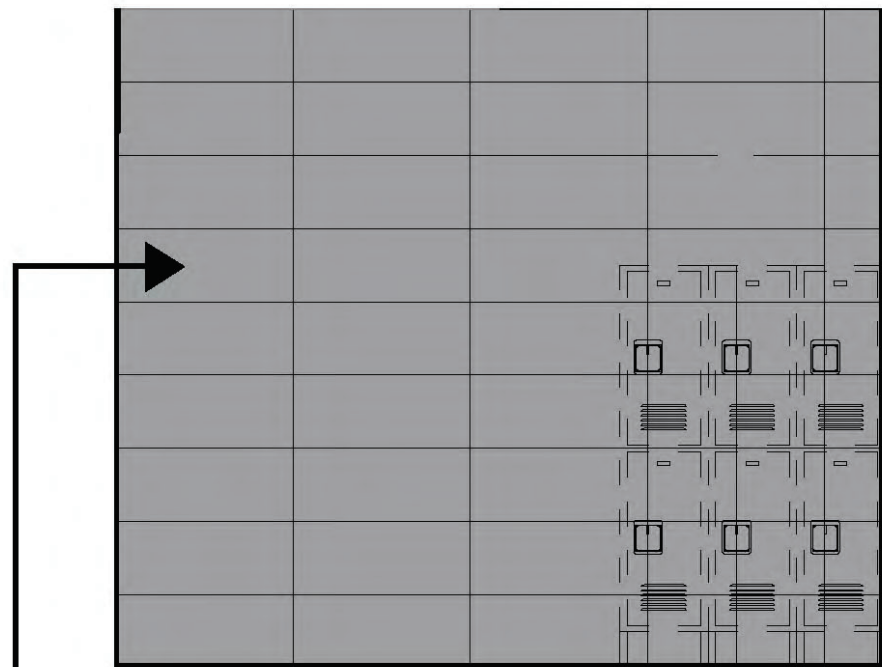
Series: *ShopWalls!*

Color: Stormy Grey

Finish: Glossy

Surface: Medium Traction

Size: 12" x 24" (U.S. Nominal Dimensions)



Stormy Grey



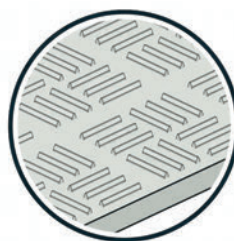
Series: DriveSeries08USA
Color: Alloy Grey
Finish: Super.Grip3L.Brightfinish
Size: 8" x 8"
Surface Traction Conforms to:
 ANSI A326.3 Use Category:
 4.1.3 Interior Wet Plus (IW+).
 4.1.4 Exterior Wet (EW).
 4.1.5 Oils/Grease (O/G).

DriveSeries8USA

advanced surface technology



Series: DriveSeries08USA
Color: Smoke Grey
Finish: Super.Grip3L.Brightfinish
Size: 8" x 8"
Surface Traction Conforms to:
 ANSI A326.3 Use Category:
 4.1.3 Interior Wet Plus (IW+).
 4.1.4 Exterior Wet (EW).
 4.1.5 Oils/Grease (O/G).



DriveSeries08USA includes three lines of elevated traction which supports your automotive dealership environment a better surface to manage STF (slip, trip, and fall) risk. DriveSeries08USA includes both **Super.Grip** which are added nano-granules of texture for added surface grip. **BrightFinish** is a permanent sealant which coats and covers the tile surface to retard permanent stains. **BrightFinish** helps dealers with the recommended cleaning efforts so your facility can be maintained in a "like new" condition.



Series: DriveSeries08USA
Color: Genesis-Carbon Black
Finish: Super.Grip3L.Brightfinish
Size: 8" x 8"
Surface Traction Conforms to:
 ANSI A326.3 Use Category:
 4.1.3 Interior Wet Plus (IW+).
 4.1.4 Exterior Wet (EW).
 4.1.5 Oils/Grease (O/G).



With DriveSeries08USA you get STF (slip, trip, and fall) risk management support and a floor that can be cleaned and maintained in a "like new" appearance.

Advantages

1. Advanced surface technology to better manage STF (slip, trip & fall) risk.
2. Surface has repeating lines elevated above the bed of the tile. Designed for greater foot, shoe-sole traction.
3. Includes Super.Grip. Advanced technology with "nano-textured" particles which increase surface traction.
4. Includes brightfinish. It will not permanently stain or darken when properly cleaned.

AutoStoneUSA Manufactured Declared Use

Evaluate for use in automotive workshop and service drive environments.

4.1.3 Interior, Wet Plus (IW+) - evaluate for interior use in automotive workshop and service drive environments with high speed doors and tech locker rooms.

4.1.4 Exterior, Wet (EW) - level outdoor spaces walkways, sidewalks, where such floors may be walked upon when wet (excluding ice or snow) if level, clean, maintained and free of standing water or other contaminants.

4.1.5 Oils/Greases (O/G) - level areas regularly exposed to automotive fluids, etc., so long as such floors are level, regularly cleaned, maintained and free of standing water and contaminant build-up.

Declared Product Use & DCOF Requirements

Meets and exceeds .50 or .55 DCOF rating, appropriate for this environment of use:

ANSI A326.3 4.1.3 Interior Wet Plus (IW+). => .50 DCOF Wet.

ANSI A326.3 4.1.4 Exterior Wet (EW). => .55 DCOF Wet.

ANSI A326.3 4.1.5 Oils/Grease (O/G). => .55 DCOF Wet.



Series: eShop08USA
Color: Alloy Grey
Finish: Super.Grip.Brightfinish
Size: 8" x 8"
Surface Traction Conforms to:
 ANSI A326.3 Use Category:
 4.1.3 Interior Wet Plus (IW+).
 4.1.4 Exterior Wet (EW).
 4.1.5 Oils/Grease (O/G).



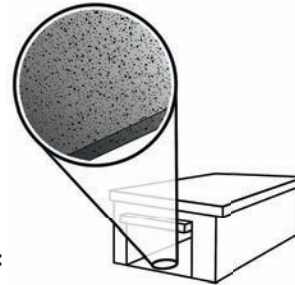
Series: eShop08USA
Color: Smoke Grey
Finish: Super.Grip.Brightfinish
Size: 8" x 8"
Surface Traction Conforms to:
 ANSI A326.3 Use Category:
 4.1.3 Interior Wet Plus (IW+).
 4.1.4 Exterior Wet (EW).
 4.1.5 Oils/Grease (O/G).



Series: eShop08USA
Color: Genesis-Carbon Black
Finish: Super.Grip.Brightfinish
Size: 8" x 8"
Surface Traction Conforms to:
 ANSI A326.3 Use Category:
 4.1.3 Interior Wet Plus (IW+).
 4.1.4 Exterior Wet (EW).
 4.1.5 Oils/Grease (O/G).

eShop8usa

better technology, better results



EShop08USA is a flat surface structure with **Super.Grip** nano- textured granules, which are added to the tile surface to provide added surface texture to help you manage your STF (slip, trip, and fall) risk. It also has our proprietary BrightFinish permanent sealant which coats and covers the tile surface to retard permanent stains.



Super.Grip provides you extra surface traction and BrightFinish helps dealers with the recommended cleaning efforts so your facility can be maintained in a "like new" condition.



With eShop08USA you get STF (slip, trip, and fall) risk management support and a floor that can be cleaned and maintained in a "like new" appearance.



Advantages

1. Advanced surface technology to better manage STF (slip, trip & fall) risk.
2. Surface has flat textured surface with enhanced surface traction. Designed for greater foot, shoe-sole traction.
3. Includes Super.Grip. Advanced technology with "nano-textured" particles which increase surface traction.
4. Includes brightfinish. It will not permanently stain or darken when properly cleaned.

AutoStoneUSA Manufactured Declared Use

Evaluate for use in automotive workshop and service drive environments.

4.1.3 Interior, Wet Plus (IW+) - evaluate for interior use in automotive workshop and service drive environments with high speed doors and tech locker rooms.

4.1.4 Exterior, Wet (EW) - level outdoor spaces walkways, sidewalks, where such floors may be walked upon when wet (excluding ice or snow) if level, clean, maintained and free of standing water or other contaminants.

4.1.5 Oils/Greases (O/G) - level areas regularly exposed to automotive fluids, etc., so long as such floors are level, regularly cleaned, maintained and free of standing water and contaminant build-up.

Declared Product Use & DCOF Requirements

Meets and exceeds .50 or .55 DCOF rating, appropriate for this environment of use:

ANSI A326.3 4.1.3 Interior Wet Plus (IW+). => **.50 DCOF Wet.**

ANSI A326.3 4.1.4 Exterior Wet (EW). => **.55 DCOF Wet.**

ANSI A326.3 4.1.5 Oils/Grease (O/G). => **.55 DCOF Wet.**



eShop8usa

better technology, better results

Series: eShop08USA
Color: Alloy Grey
Finish: Super.Grip.Brightfinish
Size: 8" x 8"
Surface Traction Conforms to:
ANSI A326.3 Use Category:
4.1.3 Interior Wet Plus (IW+).
4.1.4 Exterior Wet (EW).
4.1.5 Oils/Grease (O/G).



DriveSeries8USA

advanced surface technology

Series: DriveSeries08USA
Color: Alloy Grey
Finish: Super.Grip3L.Brightfinish
Size: 8" x 8"
Surface Traction Conforms to:
ANSI A326.3 Use Category:
4.1.3 Interior Wet Plus (IW+).
4.1.4 Exterior Wet (EW).
4.1.5 Oils/Grease (O/G).



Series: eShop08USA
Color: Smoke Grey
Finish: Super.Grip.Brightfinish
Size: 8" x 8"
Surface Traction Conforms to:
ANSI A326.3 Use category:
4.1.3 Interior Wet Plus (IW+).
4.1.4 Exterior Wet (EW).
4.1.5 Oils/Grease (O/G).



Series: DriveSeries08USA
Color: Smoke Grey
Finish: Super.Grip3L.Brightfinish
Size: 8" x 8"
Surface Traction Conforms to:
ANSI A326.3 Use Category:
4.1.3 Interior Wet Plus (IW+).
4.1.4 Exterior Wet (EW).
4.1.5 Oils/Grease (O/G).



Series: eShop08USA
Color: Genesis-Carbon Black
Finish: Super.Grip.Brightfinish
Size: 8" x 8"
Surface Traction Conforms to:
ANSI A326.3 Use Category:
4.1.3 Interior Wet Plus (IW+).
4.1.4 Exterior Wet (EW).
4.1.5 Oils/Grease (O/G).



Series: DriveSeries08USA
Color: Genesis-Carbon Black
Finish: Super.Grip3L.Brightfinish
Size: 8" x 8"
Surface Traction Conforms to:
ANSI A326.3 Use Category:
4.1.3 Interior Wet Plus (IW+).
4.1.4 Exterior Wet (EW).
4.1.5 Oils/Grease (O/G).



Series: EnviroShop12USA
Color: Alloy Grey
Finish: Traction.Brightfinish
Size: 12" x 12"
Surface Traction Conforms to:

ANSI A326.3
 4.1.3 Interior Wet Plus (IW+).

DCOF: > .50 Wet



Series: EnviroShop12USA
Color: Smoke Grey
Finish: Traction.Brightfinish
Size: 12" x 12"
Surface Traction Conforms to:

ANSI A326.3
 4.1.3 Interior Wet Plus (IW+).

DCOF: > .50 Wet



Series: EnviroShop12USA
Color: Carbon Black
Finish: Traction.Brightfinish
Size: 12" x 12"
Surface Traction Conforms to:

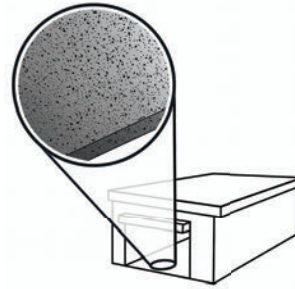
ANSI A326.3
 4.1.3 Interior Wet Plus (IW+).

DCOF: > .50 Wet



EnviroShop12usa

smarter, better workshops



EnviroShop12USA provides you a permanent floor for your service drive, workshop, tech locker rooms, and any area where you need a durable floor with a textured surface to help you manage your STF (slip, trip, and fall) risk.

EnviroShop12USA is Made in the USA and provides automotive dealers a

more affordable option than other surface finish options. When ordered and shipped on the same truck with your showroom tile, Enviroshop12USA is equal to or less than temporary epoxy coatings.

We recommend you price compare your automotive project to include Enviroshop12USA in your service drive or workshop. We offer dealers a better solution for the most important and interactive space in your dealership, - the service drive.

With EnviroShop12USA you a permanent floor that helps manage your STF risk and can be cleaned and maintained in a "like new" appearance for the life of your dealership..

Advantages

1. Our original workshop floor with textured surface.
2. Surface texture is elevated above the surface bed for easier cleaning.
3. Will not permanently stain or darken when properly cleaned.
4. This product has:

slipresistant
textured floor surfaces

AutoStoneUSA Manufactured Declared Use

4.1.3 Interior, Wet Plus (IW+) - evaluate for interior use in automotive workshop and service drive environments with high speed doors and tech locker rooms. Enviroshop12USA has a traction surface suitable for interior, wet plus applications, with good drainage. Floors walked on when wet should be level, clean, maintained and free of standing water or other contaminants. Should be cleaned with frequent maintenance to keep clean.

Declared Product Use & DCOF Requirement

Meets and exceeds .50 DCOF (wet) rating, appropriate for this environment of use:

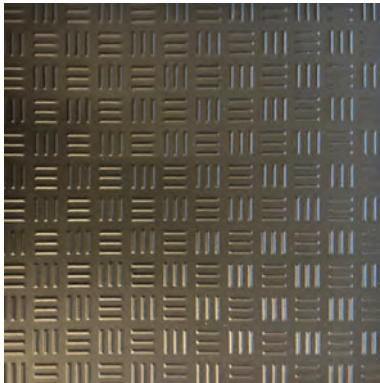
ANSI A326.3 4.1.3 Interior Wet Plus (IW+).



Series: DriveSeries12USA
Color: Alloy Grey
Finish: Traction.3L.Brightfinish
Size: 12" x 12"

Surface Traction Conforms to:

ANSI A326.3
 4.1.3 Interior Wet Plus (IW+).
 4.1.4 Exterior Wet (EW)
 4.1.5 Oils & Grease (O/G)



Series: DriveSeries12USA
Color: Carbon Black
Finish: Traction.3L.Brightfinish
Size: 12" x 12"

Surface Traction Conforms to:

ANSI A326.3
 4.1.3 Interior Wet Plus (IW+).
 4.1.4 Exterior Wet (EW)
 4.1.5 Oils & Grease (O/G)



DriveSeries12USA includes three lines of elevated traction which supports your automotive dealership environment a better surface to manage STF (slip, trip, and fall) risk. DriveSeries12USA includes BrightFinish which is a permanent sealant which coats and covers the tile

surface to retard permanent stains. BrightFinish helps dealers with the recommended cleaning efforts so your facility can be maintained in a "like new" condition.

With DriveSeries12USA you get STF (slip, trip, and fall) risk management support and a floor that can be cleaned and maintained in a "like new" appearance.



A permanent enhanced porcelain technology floor system. See declared uses below. Should be cleaned with frequent maintenance to keep clean and free of contamination and debris when dealership is operating. Spot spills should be removed immediately and not left on surface. Floor cleaning should include use of de-greasing chemical, floor scrubber sweeper machine with wet vacuum to suck-up dirty water and debris as part of cleaning process.

Advantages

1. Advanced surface technology to better manage STF (slip, trip & fall) risk.
2. Surface has repeating lines elevated above the bed of the tile. Designed for greater foot, shoe-sole traction.
3. Will not permanently stain or darken when properly cleaned.

AutoStoneUSA Manufactured Declared Use

Evaluate for use in automotive workshop and service drive environments.

- 4.1.3 Interior, Wet Plus (IW+)** - evaluate for interior use in automotive workshop and service drive environments with high speed doors and tech locker rooms.
- 4.1.4 Exterior, Wet (EW)** - level outdoor spaces walkways, sidewalks, where such floors may be walked upon when wet (excluding ice or snow) if level, clean, maintained and free of standing water or other contaminants.
- 4.1.5 Oils/Greases (O/G)** - level areas regularly exposed to automotive fluids, etc., so long as such floors are level, regularly cleaned, maintained and free of standing water and contaminant build-up.

Declared Product Use & DCOF Requirement

Meets and exceeds .55 DCOF (wet) rating, appropriate for this environment of use:

ANSI A326.3 4.1.3 Interior Wet Plus (IW+).
 ANSI A326.3 4.1.4 Exterior Wet (EW).
 ANSI A326.3 4.1.5 Oils/Grease (O/G).

EnviroShop12usa

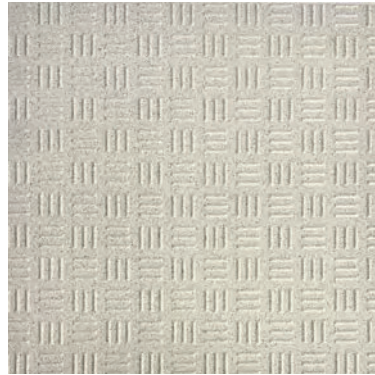
smarter, better workshops

DriveSeries12USA

advanced surface technology



Series: EnviroShop12USA
Color: Alloy Grey
Finish: Traction.Brightfinish
Size: 12" x 12"
Surface Traction Conforms to:
ANSI A326.3
4.1.3 Interior Wet Plus (IW+).
DCOF: > .50 Wet



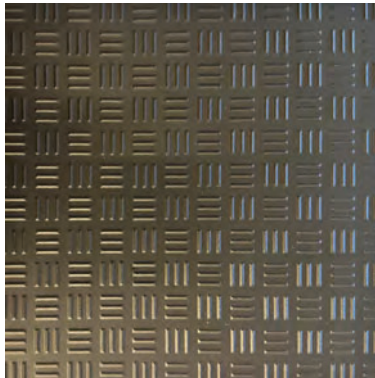
Series: DriveSeries12USA
Color: Alloy Grey
Finish: Traction.3L.Brightfinish
Size: 12" x 12"
Surface Traction Conforms to:
ANSI A326.3
4.1.3 Interior Wet Plus (IW+).
4.1.4 Exterior Wet (EW)
4.1.5 Oils & Grease (O/G)



DCOF: > .55 Wet



Series: EnviroShop12USA
Color: Smoke Grey
Finish: Traction.Brightfinish
Size: 12" x 12"
Surface Traction Conforms to:
ANSI A326.3
4.1.3 Interior Wet Plus (IW+).
DCOF: > .50 Wet



Series: DriveSeries12USA
Color: Carbon Black
Finish: Traction.3L.Brightfinish
Size: 12" x 12"
Surface Traction Conforms to:
ANSI A326.3
4.1.3 Interior Wet Plus (IW+).
4.1.4 Exterior Wet (EW)
4.1.5 Oils & Grease (O/G)



DCOF: > .55 Wet



Series: EnviroShop12USA
Color: Carbon Black
Finish: Traction.Brightfinish
Size: 12" x 12"
Surface Traction Conforms to:
ANSI A326.3
4.1.3 Interior Wet Plus (IW+).
DCOF: > .50 Wet



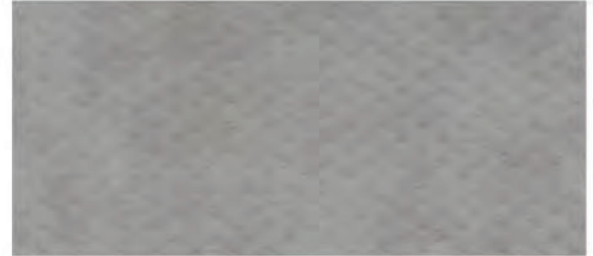
INDUSTRIAL ENVIRONMENT LVT LARGE (18" x 36") FORMAT FLOOR & WALL PANELS

RA3

Great for Parts, Storage Areas, Janitorial, Lunch & Break Rooms, Tech Locker Room Floors & Walls.

Wainscoting for Hallways, WorkShop Areas & All Back-Office Areas.

18" x 36" large format panels with rugged diamond plated surface texture to help reduce STF (slip, trip, and fall) risk.



Grey Concrete



Deep Concrete



SURFACE CAMOUFLAGE

Surface Camouflage enhances the beauty of your floor by reducing the negative visual daily contaminants generated during your workday.



SCRATCH RESISTANT SURFACE

Will not dent, scratch, or chip like metal, concrete, epoxy, tile, or other finishes.



CHEMICAL RESISTANT SURFACE

Resistant to water, gasoline, MEK, acetone, motor oil, isopropanol, acetic acid, ammonia, sodium chloride solution, and other chemicals.*



IMPACT GUARD SURFACE

Strong, rugged, and stands up to blunt force impact better than any other surface.



RA IS RECOMMENDED FOR CLIMATE CONTROLLED ENVIRONMENTS WITH A ROOF, WALL AND DOORS FLOOD SAFE, WATER RESISTANT, + SOUND REDUCTION



CLIMATE-CONTROLLED ENVIRONMENTS

For environments with a temperature room range of 40- and 104- degrees.*



FLOOD SAFE & WATER RESISTANT

Panels are moisture-resistant and can be submerged for days and remain bonded.



LESS NOISE BETTER CONDITIONS

Reduces noise decibels (dB) and improves working conditions.

So easy to install that there is no need for expensive, highly skilled labor.

So fast that you can use immediately upon installation; no cure time required.

Panels are installed edge-to-edge, and wall-to-wall for a seamless, beautiful floor.

Commercial workshops install in 1-2 days (depending on size).



RA3

RA3 PANEL PRICE

Troweled Adhesive Method*

*Troweled adhesive will be added to your quote

Thickness: 3mm

Size: 18" x 36" Panel (4.5 SQFT Per Panel)

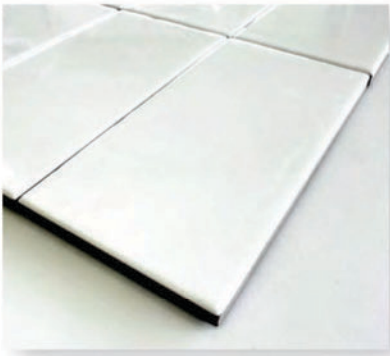
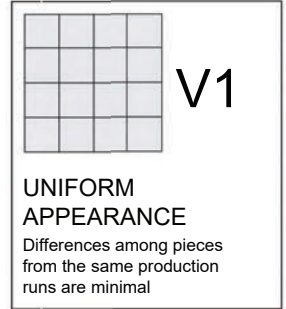
Features Included:

- Rated for climate-controlled environments (home garage)
- Surface Camouflage
- Scratch Resistant Surface
- Chemical Resistant Surface
- Impact Guard Surface
- Industrial Strength 30 mil Wear-Layer

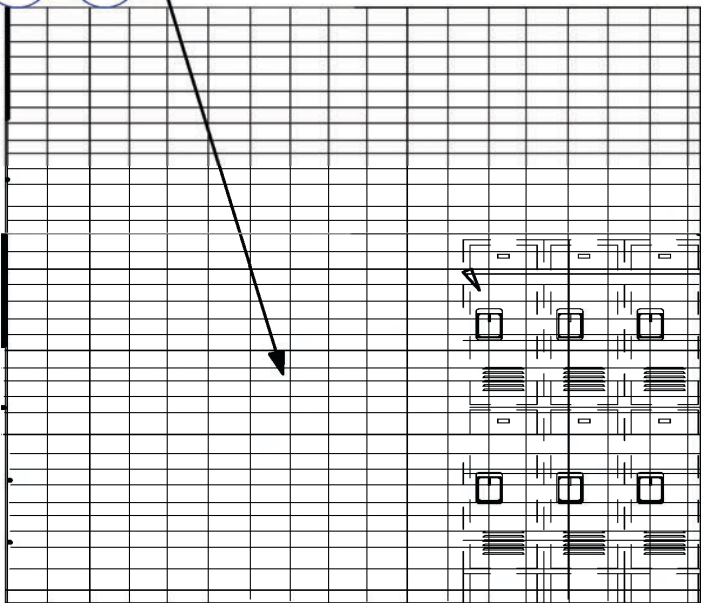
Wall Tiles



Series: Premier
Color: Bright White Ice
Finish: Glossy
Size: 3" x 6" or 6" x 6" and 12" x 24"
Product Code (3" x 6"):
 WT-1 (Alternate)
Product Code (6" x 6"):
 WT-3 (Alternate)
Product Code (12" x 24"):
 WT-3 (Alternate)



03" x 06" Subway Series



Subway Tile for Restroom & Tech Walls

Color: White
Finish: Glossy
Size: 03" x 06" (nominal)













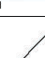
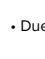
Service & Tech Restroom Areas Wall Tile

Series: ShopWall!
Color: Granita Grey
Finish: Satin
Size: 8" X 8" U.S. Nominal Dimensions .



Service & Tech Restroom Areas Wall Tile

Series: ShopWall!
Color: Anthracite Grey
Finish: Satin
Size: 8" X 8" U.S. Nominal Dimensions .

	SPECS	TEST METHOD	INDUSTRY STANDARD	AUTOSTONE VALUES
	WATER ABSORPTION	ASTM C373	≤0.5%	≤0.4%
	CHEMICAL RESISTANCE	ASTM C650	A tile sample is placed in continuous contact with a variety of chemicals for 24 hours. No sample must show visible defects.	NOT AFFECTED
	D.C.O.F. AcuTest®	ANSI A326.3	≥0.42% WET	≥0.42% WET
	STAIN RESISTANCE	ASTM C1378	Surfaces are exposed to staining agents for 24 hours followed by four cleaning procedures. Results are recorded post cleaning.	NOT AFFECTED
	BREAKING STRENGTH	ASTM C648	≥250 lb/ft ²	8mm ≥300 lb/ft ² 10mm ≥400 lb/ft ²
	RESISTANCE TO FREEZE	ASTM C1026	A tile sample is subjected to repeated processes of freezing and thawing. Sample must show no visible defects.	RESISTANT
	WARPAGE EDGE	ASTM C485	Warpage ± 0.4% or ± 0.05 in	≥± 0.4%
	WARPAGE DIAGONAL	ASTM C485	Warpage ± 0.4% or ± 0.07 in	≥± 0.4%
	WARPAGE EDGE	ASTM C485	Warpage ± 0.5% or ± 0.07 in	≥± 0.5%
	WARPAGE DIAGONAL	ASTM C485	Warpage ± 0.5% or ± 0.07 in	≥± 0.5%
	WEDGING	ASTM C502	± 0.25% or ± 0.03 in	≥± 0.25%
	THICKNESS	ASTM C499	Range: ± 0.04 in	≤0.04 in

• Due to the inherent nature of fired porcelain tile, it is important to note that the coefficient of friction may vary within and between product runs.

The AutoStoneUSA Kia Team

General and immediate online help.
You can find most information including quotes
on our Kia Brand Webpage



Kia Sales Team

kia@autostoneusa.com

<https://autostoneusa.com/kia/>

214-393-4875 phone



Omer Naffa
Program Manager
214-393-4865 direct dial
214-235-5483 mobile
omer@autostoneusa.com
**autostone
usa**



Jana Manzella
Architectural Liaison &
Program Development Manager
931-494-6165 mobile/text
jana@autostoneusa.com
**autostone
usa**



Barry Wells
President, Owner, Founder
214-393-4862 direct dial
214-830-1206 mobile
barry@autostoneusa.com
**autostone
usa**