

# autostone usa



## Mercedes-Benz EVolution Design Manual

AutoStoneUSA is a Mercedes-Benz EVolution brand and facility approved supplier for Passenger Cars and Light Trucks

Mercedes-Benz



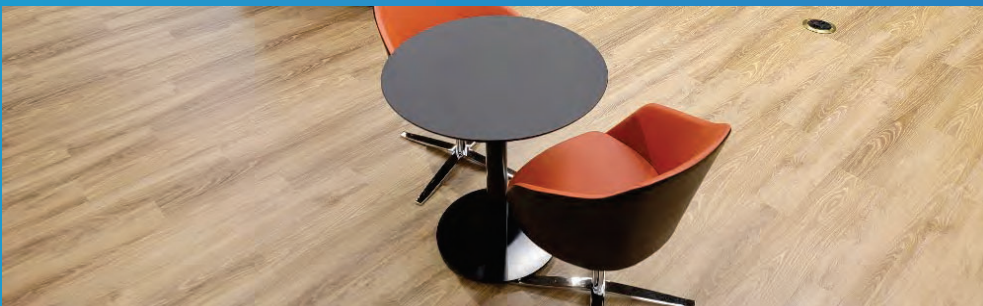
## Mercedes-Benz Tile Technical Data Specifications Guide

2026.05 Edition



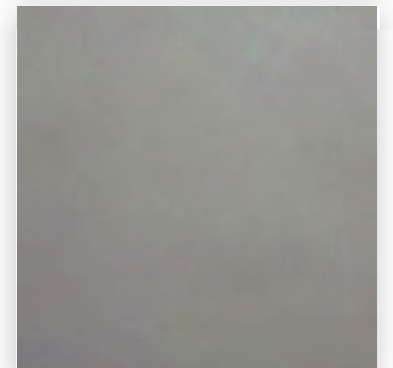
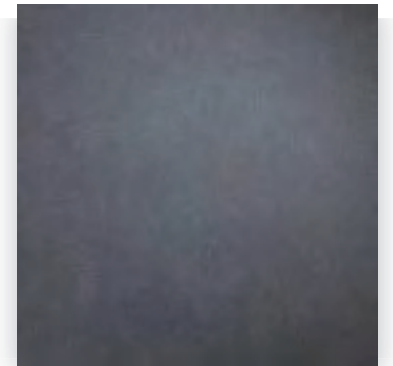
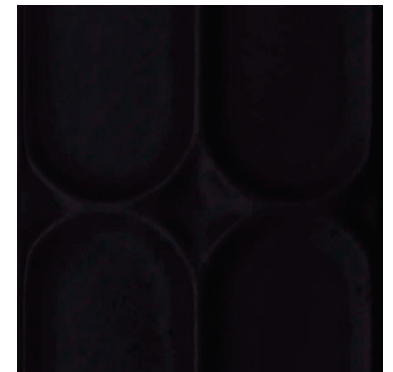
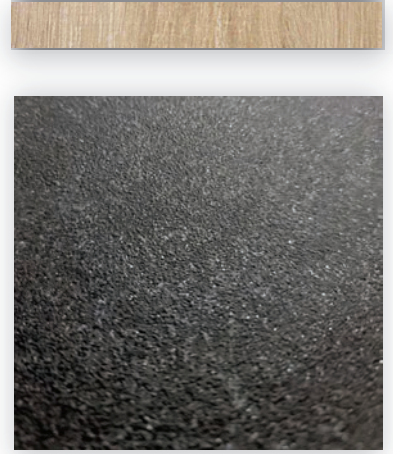
Made in USA

[AutoStoneUSA.com/Mercedes-Benz](https://AutoStoneUSA.com/Mercedes-Benz)



[AutoStoneUSA.com](https://AutoStoneUSA.com)

© 2026 AutoStone Floor Systems, All Rights Reserved.





## Black Asphalt    Deep Grey Asphalt

**Code:** FT-11

**Series:** AutohausUSA

**Color:** Black Asphalt

**Finish:** Textured Asphalt

**Size:** 24" x 24" (nominal)

**Thickness:** 8 mm

**Edge:** Rectified profile (exact dimension)

**Code:** FT-12

**Series:** AutohausUSA

**Color:** Deep Grey Asphalt

**Finish:** Textured Asphalt

**Size:** 24" x 24" (nominal)

**Thickness:** 8 mm

**Edge:** Rectified profile (exact dimension)



**MADE IN USA**

**ANSI A326.3 Declared Use:**

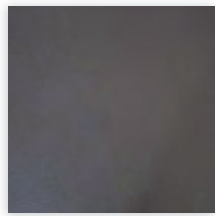
4.1.1 Interior, Dry (ID)

4.1.2 Interior Wet (IW)

### technical specifications

	SPECS	TEST METHOD	INDUSTRY STANDARD	AUTOSTONEUSA
	WATER ABSORPTION	ASTM C373	≤0.5%	≤0.4%
	CHEMICAL RESISTANCE	ASTM C650	A tile sample is placed in continuous contact with a variety of chemicals for 24 hours. No sample must show visible defects.	NOT AFFECTED
	D.C.O.F. AcuTest®	ANSI A326.3	≥0.42% WET	≥0.42% WET
	STAIN RESISTANCE	ASTM C1378	Surfaces are exposed to staining agents for 24 hours followed by four cleaning procedures. Results are recorded post cleaning.	NOT AFFECTED
	BREAKING STRENGTH	ASTM C648	≥250 lb/ft2	8mm ≥300 lb/ft2 10mm ≥400 lb/ft2
	RESISTANCE TO FREEZE	ASTM C1026	A tile sample is subjected to repeated processes of freezing and thawing. Sample must show no visible defects.	RESISTANT
	WARPAGE EDGE	ASTM C485	Warpage ± 0.4% or ± 0.05 in	≥± 0.4%
	WARPAGE DIAGONAL	ASTM C485	Warpage ± 0.4% or ± 0.07 in	≥± 0.4%
	WARPAGE EDGE	ASTM C485	Warpage ± 0.5% or ± 0.07 in	≥± 0.5%
	WARPAGE DIAGONAL	ASTM C485	Warpage ± 0.5% or ± 0.07 in	≥± 0.5%
	WEDGING	ASTM C502	± 0.25% or ± 0.03 in	≥± 0.25%
	THICKNESS	ASTM C499	Range: ± 0.04 in	≤0.04 in

**V2**  
**SLIGHT VARIATION**  
Clearly distinguishable differences in texture and/or pattern with similar colors.



## Nero

**Code:** FT-13

**Series:** AutobahnUSA

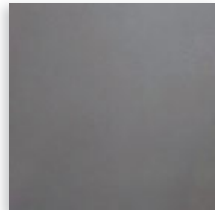
**Color:** Nero

**Finish:** Natural | Textured

**Size:** 12" x 24", 24" x 24" (nominal)

**Thickness:** 8 mm

**Edge:** Rectified profile (exact dimension)



## City

**Code:** FT-14

**Series:** AutobahnUSA

**Color:** City

**Finish:** Natural | Textured

**Size:** 12"x24" or 24"x24" (nominal)

**Thickness:** 8 mm

**Edge:** Rectified profile (exact dimension)



**MADE IN USA**

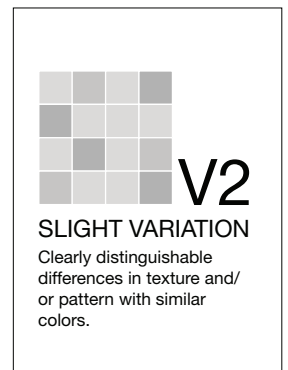
**ANSI A326.3 Declared Use:**

4.1.1 Interior, Dry (ID)

4.1.2 Interior Wet (IW)

## technical specifications

	SPECS	TEST METHOD	INDUSTRY STANDARD	AUTOSTONEUSA
	WATER ABSORPTION	ASTM C373	≤0.5%	≤0.4%
	CHEMICAL RESISTANCE	ASTM C650	A tile sample is placed in continuous contact with a variety of chemicals for 24 hours. No sample must show visible defects.	NOT AFFECTED
	D.C.O.F. AcuTest®	ANSI A326.3	≥0.42% WET	≥0.42% WET
	STAIN RESISTANCE	ASTM C1378	Surfaces are exposed to staining agents for 24 hours followed by four cleaning procedures. Results are recorded post cleaning.	NOT AFFECTED
	BREAKING STRENGTH	ASTM C648	≥250 lb/ft2	8mm ≥300 lb/ft2 10mm ≥400 lb/ft2
	RESISTANCE TO FREEZE	ASTM C1026	A tile sample is subjected to repeated processes of freezing and thawing. Sample must show no visible defects.	RESISTANT
	WARPAGE EDGE	ASTM C485	Warpage ± 0.4% or ± 0.05 in	≥± 0.4%
	WARPAGE DIAGONAL	ASTM C485	Warpage ± 0.4% or ± 0.07 in	≥± 0.4%
	WARPAGE EDGE	ASTM C485	Warpage ± 0.5% or ± 0.07 in	≥± 0.5%
	WARPAGE DIAGONAL	ASTM C485	Warpage ± 0.5% or ± 0.07 in	≥± 0.5%
	WEDGING	ASTM C502	± 0.25% or ± 0.03 in	≥± 0.25%
	THICKNESS	ASTM C499	Range: ± 0.04 in	≤0.04 in





## Stuttgart Black

**Code:** FT-15

**Series:** LombardUSA

**Color:** Stuttgart Black

**Finish:** Matte | Natural

**Size:** 12" x 24" or 24" x 24" (nominal)

**Thickness:** 9 mm



## Deutsche Graphit

**Code:** FT-16

**Series:** LombardUSA

**Color:** Deutsche Graphit

**Finish:** Matte | Natural

**Size:** 12" x 24" or 24" x 24" (nominal)

**Thickness:** 9 mm



**MADE IN USA**

## technical specifications

**ANSI A326.3 Declared Use:**

4.1.1 Interior, Dry (ID)

4.1.2 Interior Wet (IW)

	SPECS	TEST METHOD	INDUSTRY STANDARD	AUTOSTONEUSA
	WATER ABSORPTION	ASTM C373	≤0.5%	≤0.4%
	CHEMICAL RESISTANCE	ASTM C650	A tile sample is placed in continuous contact with a variety of chemicals for 24 hours. No sample must show visible defects.	NOT AFFECTED
	D.C.O.F. AcuTest®	ANSI A326.3	≥0.42% WET	≥0.42% WET
	STAIN RESISTANCE	ASTM C1378	Surfaces are exposed to staining agents for 24 hours followed by four cleaning procedures. Results are recorded post cleaning.	NOT AFFECTED
	BREAKING STRENGTH	ASTM C648	≥250 lb/ft2	8mm ≥300 lb/ft2 10mm ≥400 lb/ft2
	RESISTANCE TO FREEZE	ASTM C1026	A tile sample is subjected to repeated processes of freezing and thawing. Sample must show no visible defects.	RESISTANT
	WARPAGE EDGE	ASTM C485	Warpage ± 0.4% or ± 0.05 in	≥± 0.4%
	WARPAGE DIAGONAL	ASTM C485	Warpage ± 0.4% or ± 0.07 in	≥± 0.4%
	WARPAGE EDGE	ASTM C485	Warpage ± 0.5% or ± 0.07 in	≥± 0.5%
	WARPAGE DIAGONAL	ASTM C485	Warpage ± 0.5% or ± 0.07 in	≥± 0.5%
	WEDGING	ASTM C502	± 0.25% or ± 0.03 in	≥± 0.25%
	THICKNESS	ASTM C499	Range: ± 0.04 in	≤0.04 in

**V2**  
**SLIGHT VARIATION**  
Clearly distinguishable differences in texture and/or pattern with similar colors.



## WoodPlank Tile

**Code:** FT-23

**Series:** WoodPlankUSA  
**Color:** Maple Harvest  
**Finish:** Natural | Matte (wood texture)  
**Size:** 8" x 48" (nominal)  
**Thickness:** 8 mm



## WoodPlank Tile (alt)

**Code:** FT-23

**Series:** MoodWoodPlank  
**Color:** Gaineswood Honey Oak  
**Finish:** Natural | Matte (wood texture)  
**Size:** 6" x 36" (nominal)  
**Thickness:** 8 mm



MADE IN USA

### technical specifications

This product meets or exceeds all standards described in ANSI A137.1.

**ANSI A326.3 Declared Use:** 4.1.1 Interior, Dry (ID)  
 4.1.2 Interior Wet (IW)

	SPECS	TEST METHOD	INDUSTRY STANDARD	AUTOSTONE VALUES	
	WATER ABSORPTION	ASTM C373	≤0.5%	≤0.4%	
	<b>CERTIFIED PORCELAIN TILE</b> <small>0.5% or less water absorption</small>	ASTM C373	0.5%	Meeting the water absorption criteria of the American national standard PTCA	
	SURFACE WEAR RESISTANCE	ANSI A137.1	Surface Wear-resistance properties of glazed vitreous and porcelain tiles.	ALL RESIDENTIAL / COMMERCIAL	
	CHEMICAL RESISTANCE	ASTM C650	A tile sample is placed in continuous contact with a variety of chemicals for 24 hours. No sample must show visible defects.	NOT AFFECTED	
	D.C.O.F. AcuTest®	ANSI A326.3	≥0.42 WET	≥0.42 WET	
	STAIN RESISTANCE	ASTM C1378	Surfaces are exposed to staining agents for 24 hours followed by four cleaning procedures. Results are recorded post cleaning.	NOT AFFECTED	
	BREAKING STRENGTH	ASTM C648	≥250 lbf	8mm ≥300 lbf 10mm ≥400 lbf	
	RESISTANCE TO FREEZE	ASTM C1026	A tile sample is subjected to repeated processes of freezing and thawing. Sample must show no visible defects.	RESISTANT	
	WARPAGE EDGE	ASTM C485	±0.40% or ±0.05 in (±1.8 mm)	± 0.40%	Rectified
	WARPAGE DIAGONAL	ASTM C485	±0.40% or ±0.07 in (±1.8 mm)	± 0.40%	Rectified
	WEDGING	ASTM C502	±0.25% or ±0.03 in (±0.8 mm)	± 0.25%	Rectified
	WARPAGE EDGE	ASTM C485	±0.50% or ±0.07 in (±1.8 mm)	± 0.50%	Calibrated
	WARPAGE DIAGONAL	ASTM C485	±0.50% or ±0.07 in (±1.8 mm)	± 0.50%	Calibrated
	WEDGING	ASTM C502	±0.50% or ±0.08 in (±2.0 mm)	± 0.50%	Calibrated
	THICKNESS	ASTM C499	Range: ± 0.04 in	≤0.04 in	

• Due to the inherent nature of fired porcelain tile, it is important to note that the coefficient of friction may vary within and between product runs.



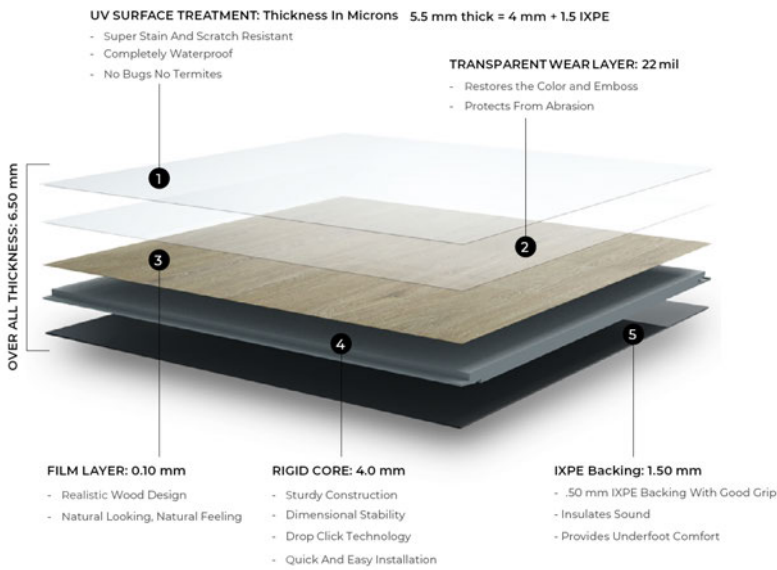
LUXURY VINYL TILE - SPC - (rigid board) with click together installation with floating floor design for WoodPlank Option.

## Maple Beech

**Code:** FT-23  
**Series:** LV WOODPLANK AUTOMOTIVE COLLECTION  
**LVT Type:** SPC (stone panel composition) - rigid board.  
**Installation:** Click together - floating floor.  
**Color:** Maple Beech  
**Finish:** Natural | Matte (wood texture)  
**Size:** 7" x 48" (U.S. nominal) dimension  
**Thickness:** 5.5 mm (overall) = 4 + 1.5 IXPE  
**Wear Layer:** 22 ml wear layer



Unilin click together



### FEATURES & BENEFITS & CLICK TOGETHER UNILIN SYSTEM



Superior Scratch & Stain Resistant



No Bugs & Termites



\*No Adhesive Required



100% Waterproof



Easy Clean



Natural Looking Design



Zero Maintenance



Superb Dimensional Stability



Heavy Foot Traffic



Excellent Sound Insulation

Press until you hear the "Click" sound of the drop-click-install system.

#### IMPORTANT INSTALLATION NOTICE

This floor system can be installed as either a free-floating floor, or an adhesive bonded floor to sub-surface substrate.

Only install free-floating if inside four walls (example: F&I, Sales office), and where there is no possibility of an automobile being driven, rolled or transverseing the surface.

If installed in a large open area, or if there is the possibility of an automobile being driven, rolled or transverseing the surface, we recommend use of an adhesive to bond LVT to the substrate. However, consult with AutoStone on selection of adhesive prior to purchase and plan of application.

*Cars apply significant torque and pressure. If not properly bonded, will be damaged by vehicle on the surface.*

\* This floor system can be installed as either a free-floating floor, or an adhesive bonded floor to sub-surface substrate. Only install free-floating if inside four walls (example: F&I, Sales office), and where there is no possibility of an automobile being driven, rolled or transverseing the surface.

If installed in a large open area, or if there is the possibility of an automobile being driven, rolled or transverseing the surface, we recommend use of an adhesive to bond LVT to the substrate. *Cars apply significant torque and pressure. If not properly bonded, will be damaged by vehicle on the surface.*

## LV WOODPLANK - AUTOMOTIVE COLLECTION SPC FLOORING: UNICLIC / UNIPUSH™ CLICK SYSTEM

SPC FLOORING FOR HEAVY COMMERCIAL USE | PUR Polyurethane Reinforcement | Product Standard ELEGANCE ASTM F3261-17

CERTIFICATION & CLASSIFICATION	STANDARD	LV WOODPLANK - AUTOMOTIVE COLLECTION
TYPE OF FLOOR COVERING	ASTM F3261   EN 16511	RESILIENT FLOORING IN MODULAR FORMAT WITH RIGID CORE (SPC)
CE CERTIFICATION	EN 14041	Yes
CLASSIFICATION	EN ISO 10874	Heavy Traffic : Class 34

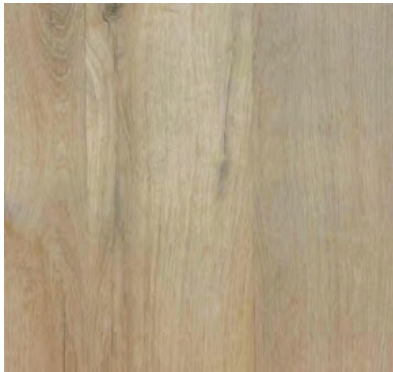
TECHNICAL CHARACTERISTICS	STANDARDS	LV WOODPLANK - AUTOMOTIVE COLLECTION
TOTAL THICKNESS	EN ISO 24336 (EN 428)   ASTM F387	5.50 MM
WEAR LAYER THICKNESS	EN ISO 24340 (EN 429)   ASTM F410	22 MIL WL
SURFACE TREATMENT	UV TREATED	PUR
TOTAL WEIGHT	EN ISO 23997 (EN 430)	1,825 LBS PALLET / SQFT = 1,051 sf/pallet
WEAR LAYER BINDER CONTENT	ASTM F3261-17   ISO 10582	TYPE I
FORM OF DELIVERY	EN ISO 24337 - PLANK ASTM F2055	7" X 48" = 21.02 sq.ft   9 Pieces per box

TECHNICAL PERFORMANCES	STANDARDS	LV WOODPLANK - AUTOMOTIVE COLLECTION
DIMENSIONAL STABILITY	EN ISO 23999 ( EN 434)   ASTM F2199	≤ 0.10%
REACTION TO FIRE	EN 13501 – 1   ASTM E648	Bfl- S1   PASS
RESIDUAL INDENTATION	EN ISO 24343-1 (EN 433)   ASTM F1914	Required Value : ≤ 0.10mm Average Measured Value : 0.03mm
FURNITURE LEG	EN 424	No Damage
CASTOR CHAIR	EN ISO 4918 (EN 425)	No Damage
CURL RESULTANT TO HEAT	EN 434   ASTM F2199	≤ 2mm   PASS
SMOKE RESISTANCE	ASTM E662	PASS
IMPACT SOUND REDUCTION	EN ISO 140-8 EN ISO 717/2	Δ Lnw = 21 dB
LIGHT FASTNESS	EN ISO 105 – B02   ASTM F1515	PASS
RESISTANCE TO CHEMICALS	EN ISO 26987 (EN423)   ASTM F925	Good Resistance   PASS
SLIP RESISTANCE	DIN51130   EN 13893	R9   PASS
STATIC LOAD	ASTM F970 / F387	PASS



ISO 9001  
ISO 14001  
ISO 18001











LUXURY VINYL TILE - glue down LVT material. Affordable material for non-customer contact areas.





## Birch Maple - Discretionary Use / Non-Customer Contact / Break Rooms / Parts / Operations

**Code:** FT-23  
**Series:** LV WOODPLANK AUTOMOTIVE COLLECTION  
**Installation:** Glue Down LVT Material - Adhesive is NOT supplied by AutoStoneUSA  
**Color:** Birch Maple  
**Finish:** Natural | Matte (wood texture)  
**Size:** 7.25" x 48" (U.S. nominal) dimension  
**Thickness:** 2.5 mm  
**Wear Layer:** 22 ml wear layer | 0.55 mm

### FEATURES & BENEFITS

### APPLICATIONS

-   
Superior Scratch & Stain Resistant
-   
Little to no Maintenance
-   
Easy Clean
-   
Natural Looking Design
-   
Heavy Foot Traffic
-   
Easy Installation

-   
Corporate Offices
-   
Commercial Establishments
-   
Retail Outlets
-   
Hotels & Hospitality



**SIZE:** 7.25" x 48"

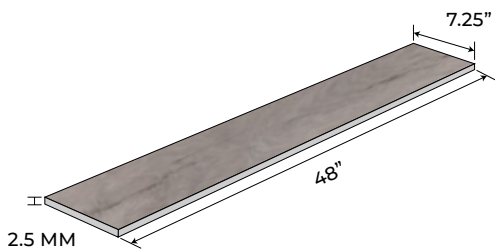
**THICKNESS:** 2.5 MM

**WEAR LAYER:** 22 MIL | 0.55 MM

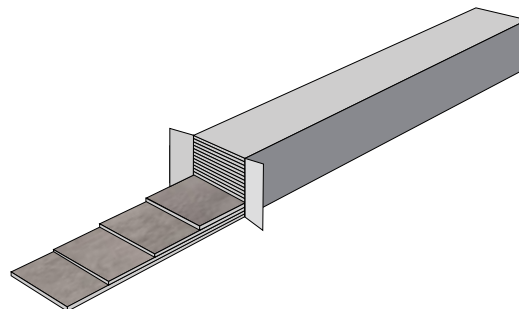
**PIECES:** 16 PER CARTON

**COVERAGE:** 38.66 SQ FT / 3.59 M<sup>2</sup> / CARTON

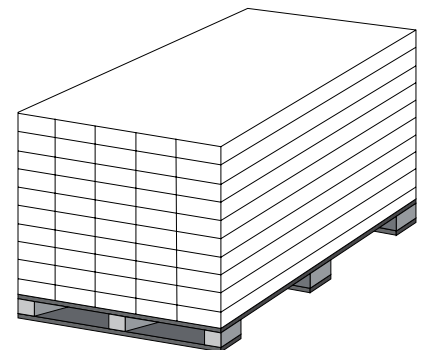
**INSTALLATION:** DRY BACK LVT



7.25" x 48" x 2.5 mm  
 184.15.00 mm x 1219.2 mm x 2.5 mm  
 22 MIL / 0.55 mm



16 PCS / CARTON  
 38.66 SQ.FT / CARTON  
 3.59 SQ.M / CARTON



50 CARTONS / PALLET

Loose Lay Luxury Vinyl Tiles For Commercial and Light Industry  
 PUR Polyurethane Reinforcement | Product Standard: ISO 10582

CERTIFICATION & CLASSIFICATION	STANDARD	WOODPLANK LVT - AUTOSTONE
TYPE OF FLOOR COVERING	ISO 10582	LUXURY VINYL TILE
CE CERTIFICATION	EN 14041	YES
CLASSIFICATION	EN ISO 10874	32 / 42

TECHNICAL CHARACTERISTICS	STANDARD	PROSPERITY
TOTAL THICKNESS	EN ISO 2436 (EN 428)	2.5 MM
WEAR LAYER THICKNESS	EN ISO 24340 (EN 429)	0.55 MM   22 MIL
SURFACE TREATMENT	UV TREATED	PUR
MASS PER UNIT AREA	EN ISO 23997 (EN 430)	4.2 KG/M <sup>2</sup>
WEAR LAYER BINDER CONTENT	ISO 10582	TYPE I
FORM OF DELIVERY	EN ISO 24342 ( EN 427) Planks box	7.25" X 48"   16 PLANKS / CARTON = 38.66 SF 184.15 X 1219.2 MM   16 PLANKS / CARTON = 3.59 M <sup>2</sup>

TECHNICAL PERFORMANCE	STANDARD	PROSPERITY
DIMENSIONAL STABILITY	EN ISO 23999 ( EN 434)	≤0.10%
REACTION TO FIRE	EN 13501 – 1	CLASS BFL-S1
RESIDUAL INDENTATION	EN ISO 24343-1 (EN 433)	≤ 0.05M
WEAR RESISTANCE	EN 660-1	GROUP T
CASTOR CHAIR	EN ISO 4918 (EN 425)	NO DAMAGE
CURL RESULTANT TO HEAT	EN ISO 23999 (434)	≤ 2MM
LIGHT FASTNESS	EN ISO 105 – B02	≥ 6
RESISTANCE TO STAIN	EN 438	GRADE 5
RESISTANCE TO CHEMICALS	EN ISO 26987 (EN423)	GOOD RESISTANCE
SLIP RESISTANCE	DIN 51130   EN 13893	R10   CLASS DS
ELECTRICAL PROPERTIES	EN 1815   EN 1081	<2KVONCONCRETE   R1 > 10 <sup>10</sup> Ω
THERMAL RESISTANCE	EN ISO 10456	0.07 M2 K/W



ISO 9001  
 ISO 14001  
 ISO 18001



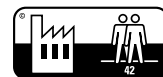
LIMITED RESIDENTIAL WARRANTY



LIGHT COMMERCIAL WARRANTY



EN 14041



## EnviroShop12usa smarter, better workshops



**MADE in USA**



**Series:** EnviroShop12USA  
**Color:** Alloy Grey  
**Finish:** Traction.Brightfinish  
**Size:** 12" x 12"

**Surface Traction Conforms to:**  
ANSI A326.3  
4.1.3 Interior Wet Plus (IW+).

**DCOF:** > .50 Wet

**Series:** EnviroShop12USA  
**Color:** Smoke Grey  
**Finish:** Traction.Brightfinish  
**Size:** 12" x 12"

**Surface Traction Conforms to:**  
ANSI A326.3  
4.1.3 Interior Wet Plus (IW+).

**DCOF:** > .50 Wet

**Series:** EnviroShop12USA  
**Color:** Carbon Black  
**Finish:** Traction.Brightfinish  
**Size:** 12" x 12"

**Surface Traction Conforms to:**  
ANSI A326.3  
4.1.3 Interior Wet Plus (IW+).

**DCOF:** > .50 Wet

### AutoStoneUSA Manufactured Declared Use

**4.1.3 Interior, Wet Plus (IW+)** - evaluate for interior use in automotive workshop and service drive environments with high speed doors and tech locker rooms. Enviroshop12USA has a traction surface suitable for interior, wet plus applications, with good drainage. Floors walked on when wet should be level, clean, maintained and free of standing water or other contaminants. Should be cleaned with frequent maintenance to keep clean.

### Declared Product Use & DCOF Requirement

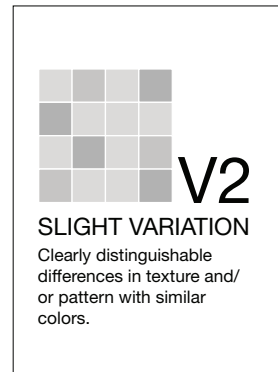
Meets and exceeds .50 DCOF (wet) rating, appropriate for this environment of use:

**ANSI A326.3 Category:** 4.1.3 Interior, Wet Plus (IW+)

ANSI A326.3 4.1.3 Interior Wet Plus (IW+).

## technical specifications

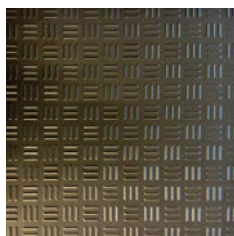
	SPECS	TEST METHOD	INDUSTRY STANDARD	AUTOSTONEUSA
	WATER ABSORPTION	ASTM C373	≤0.5%	≤0.4%
	CHEMICAL RESISTANCE	ASTM C650	A tile sample is placed in continuous contact with a variety of chemicals for 24 hours. No sample must show visible defects.	NOT AFFECTED
	D.C.O.F. AcuTest®	ANSI A326.3 4.1.3 IW+ (Interior, Wet)	≥0.50 DCOF WET	≥0.50 DCOF WET
	STAIN RESISTANCE	ASTM C1378	Surfaces are exposed to staining agents for 24 hours followed by four cleaning procedures. Results are recorded post cleaning.	NOT AFFECTED
	BREAKING STRENGTH	ASTM C648	≥250 lb/ft2	8mm ≥300 lb/ft2 10mm ≥400 lb/ft2
	RESISTANCE TO FREEZE	ASTM C1026	A tile sample is subjected to repeated processes of freezing and thawing. Sample must show no visible defects.	RESISTANT
	WARPAGE EDGE	ASTM C485	Warpage ± 0.4% or ± 0.05 in	≥± 0.4%
	WARPAGE DIAGONAL	ASTM C485	Warpage ± 0.4% or ± 0.07 in	≥± 0.4%
	WARPAGE EDGE	ASTM C485	Warpage ± 0.5% or ± 0.07 in	≥± 0.5%
	WARPAGE DIAGONAL	ASTM C485	Warpage ± 0.5% or ± 0.07 in	≥± 0.5%
	WEDGING	ASTM C502	± 0.25% or ± 0.03 in	≥± 0.25%
	THICKNESS	ASTM C499	Range: ± 0.04 in	≤0.04 in



## DriveSeries12USA advanced surface technology



MADE in USA



**Series:** DriveSeries12USA  
**Color:** Alloy Grey  
**Finish:** Traction.3L.Brightfinish  
**Size:** 12" x 12"

**Series:** DriveSeries12USA  
**Color:** Carbon Black  
**Finish:** Traction.3L.Brightfinish  
**Size:** 12" x 12"

**Surface Traction Conforms to:**  
ANSI A326.3  
4.1.3 Interior Wet Plus (IW+).  
4.1.4 Exterior Wet (EW)  
4.1.5 Oils & Grease (O/G)  
**DCOF:** > .55 Wet

**Surface Traction Conforms to:**  
ANSI A326.3  
4.1.3 Interior Wet Plus (IW+).  
4.1.4 Exterior Wet (EW)  
4.1.5 Oils & Grease (O/G)  
**DCOF:** > .55 Wet

### Product Use Category 4.1.4 Exterior Wet (EW) & 4.1.5 (O/G)

Evaluate for use in automotive workshop and service drive environments.

**4.1.4 (Exterior, Wet)** - level outdoor spaces walkways, sidewalks, where such floors may be walked upon when wet (excluding ice or snow) if level, clean, maintained and free of standing water or other contaminants.

**4.1.5 (Oils/Greases)** - level areas regularly exposed to automotive fluids, etc., so long as such floors are level, regularly cleaned, maintained and free of standing water and contaminant build-up. Consult with your architect to determine dealership practices. Review ANSI A326.3 2021 standard. **DCOF** - Minimum .55 DCOF rating as required for ANSI A326.3 4.1.4 Exterior Wet and 4.1.5 Oils / Grease.

#### ANSI A326.3 Declared Use:

4.1.4 Exterior, Wet Plus (IW+) - and - 4.1.5 Oils/Grease (O/G)

## technical specifications

	SPECS	TEST METHOD	INDUSTRY STANDARD	AUTOSTONEUSA
	WATER ABSORPTION	ASTM C373	≤0.5%	≤0.4%
	CHEMICAL RESISTANCE	ASTM C650	A tile sample is placed in continuous contact with a variety of chemicals for 24 hours. No sample must show visible defects.	NOT AFFECTED
	D.C.O.F. AcuTest®	ANSI A326.3 4.1.4 EW (Exterior, Wet) 4.1.5 O/G (Oils/Grease)	≥0.55 DCOF WET	≥0.55 DCOF WET
	STAIN RESISTANCE	ASTM C1378	Surfaces are exposed to staining agents for 24 hours followed by four cleaning procedures. Results are recorded post cleaning.	NOT AFFECTED
	BREAKING STRENGTH	ASTM C648	≥250 lb/ft2	8mm ≥300 lb/ft2 10mm ≥400 lb/ft2
	RESISTANCE TO FREEZE	ASTM C1026	A tile sample is subjected to repeated processes of freezing and thawing. Sample must show no visible defects.	RESISTANT
	WARPAGE EDGE	ASTM C485	Warpage ± 0.4% or ± 0.05 in	≥± 0.4%
	WARPAGE DIAGONAL	ASTM C485	Warpage ± 0.4% or ± 0.07 in	≥± 0.4%
	WARPAGE EDGE	ASTM C485	Warpage ± 0.5% or ± 0.07 in	≥± 0.5%
	WARPAGE DIAGONAL	ASTM C485	Warpage ± 0.5% or ± 0.07 in	≥± 0.5%
	WEDGING	ASTM C502	± 0.25% or ± 0.03 in	≥± 0.25%
	THICKNESS	ASTM C499	Range: ± 0.04 in	≤0.04 in

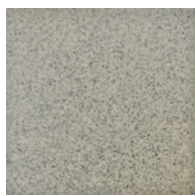
**V2**  
SLIGHT VARIATION

Clearly distinguishable differences in texture and/or pattern with similar colors.

Note: Made in USA



MADE in USA



**Alloy Grey**

Size: 08" x 08" x 10 mm  
 Finish: Super.Grip.BrightFinish  
 ANSI A362.3 Use Environment:  
 4.1.3 IW+ (Interior Wet, Pus)  
 4.1.4 EW (Exterior Wet)  
 4.1.5 O/G (Oils & Grease)

**Smoke Grey**

Size: 08" x 08" x 10 mm  
 Finish: Super.Grip.BrightFinish  
 ANSI A362.3 Use Environment:  
 4.1.3 IW+ (Interior Wet, Pus)  
 4.1.4 EW (Exterior Wet)  
 4.1.5 O/G (Oils & Grease)

**Genesis-Carbon Black**

Size: 08" x 08" x 10 mm  
 Finish: Super.Grip.BrightFinish  
 ANSI A362.3 Use Environment:  
 4.1.3 IW+ (Interior Wet, Pus)  
 4.1.4 EW (Exterior Wet)  
 4.1.5 O/G (Oils & Grease)

## Product Use Category 4.1.4 Exterior Wet (EW) & 4.1.5 (O/G)

Evaluate for use in automotive workshop and service drive environments.

**4.1.4 (Exterior, Wet)** - level outdoor spaces walkways, sidewalks, where such floors may be walked upon when wet (excluding ice or snow) if level, clean, maintained and free of standing water or other contaminants.

**4.1.5 (Oils/Greases)** - level areas regularly exposed to automotive fluids, etc., so long as such floors are level, regularly cleaned, maintained and free of standing water and contaminant build-up. Consult with your architect to determine dealership practices. Review ANSI A326.3 2021 standard.

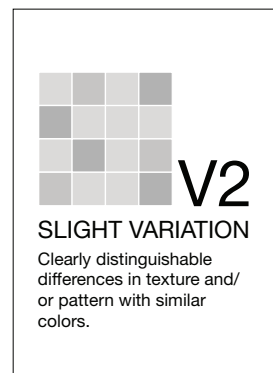
**DCOF** - Meets and exceeds .55 DCOF rating as required for ANSI A326.3 4.1.4. Exterior Wet and 4.1.5 Oils / Grease.

### ANSI A326.3 Declared Use:

4.1.4 Exterior, Wet Plus (IW+) - and - 4.1.5 Oils/Grease (O/G)

## technical specifications

	SPECS	TEST METHOD	INDUSTRY STANDARD	AUTOSTONEUSA
	WATER ABSORPTION	ASTM C373	≤0.5%	≤0.4%
	CHEMICAL RESISTANCE	ASTM C650	A tile sample is placed in continuous contact with a variety of chemicals for 24 hours. No sample must show visible defects.	NOT AFFECTED
	D.C.O.F. AcuTest®	ANSI A326.3 4.1.4 EW (Exterior, Wet) 4.1.5 O/G (Oils/Grease)	≥0.55 DCOF WET	≥0.55 DCOF WET
	STAIN RESISTANCE	ASTM C1378	Surfaces are exposed to staining agents for 24 hours followed by four cleaning procedures. Results are recorded post cleaning.	NOT AFFECTED
	BREAKING STRENGTH	ASTM C648	≥250 lb/ft2	8mm ≥300 lb/ft2 10mm ≥400 lb/ft2
	RESISTANCE TO FREEZE	ASTM C1026	A tile sample is subjected to repeated processes of freezing and thawing. Sample must show no visible defects.	RESISTANT
	WARPAGE EDGE	ASTM C485	Warpage ± 0.4% or ± 0.05 in	≥± 0.4%
	WARPAGE DIAGONAL	ASTM C485	Warpage ± 0.4% or ± 0.07 in	≥± 0.4%
	WARPAGE EDGE	ASTM C485	Warpage ± 0.5% or ± 0.07 in	≥± 0.5%
	WARPAGE DIAGONAL	ASTM C485	Warpage ± 0.5% or ± 0.07 in	≥± 0.5%
	WEDGING	ASTM C502	± 0.25% or ± 0.03 in	≥± 0.25%
	THICKNESS	ASTM C499	Range: ± 0.04 in	≤0.04 in



Note: Made in USA

## DriveSeries8USA advanced surface technology



MADE in USA



**Alloy Grey**

Size: 08" x 08" x 10 mm

Finish: Super.Grip.3L.BrightFinish

ANSI A362.3 Use Environment:

4.1.3 IW+ (Interior Wet, Pus)

4.1.4 EW (Exterior Wet)

4.1.5 O/G (Oils & Grease)



**Smoke Grey**

Size: 08" x 08" x 10 mm

Finish: Super.Grip.3L.BrightFinish

ANSI A362.3 Use Environment:

4.1.3 IW+ (Interior Wet, Pus)

4.1.4 EW (Exterior Wet)

4.1.5 O/G (Oils & Grease)



**Genesis-Carbon Black**

Size: 08" x 08" x 10 mm

Finish: Super.Grip.3L.BrightFinish

ANSI A362.3 Use Environment:

4.1.3 IW+ (Interior Wet, Pus)

4.1.4 EW (Exterior Wet)

4.1.5 O/G (Oils & Grease)

### Product Use Category 4.1.4 Exterior Wet (EW) & 4.1.5 (O/G)

Evaluate for use in automotive workshop and service drive environments.

**4.1.4 (Exterior, Wet)** - level outdoor spaces walkways, sidewalks, where such floors may be walked upon when wet (excluding ice or snow) if level, clean, maintained and free of standing water or other contaminants.

**4.1.5 (Oils/Greases)** - level areas regularly exposed to automotive fluids, etc., so long as such floors are level, regularly cleaned, maintained and free of standing water and contaminant build-up. Consult with your architect to determine dealership practices. Review ANSI A326.3 2021 standard.

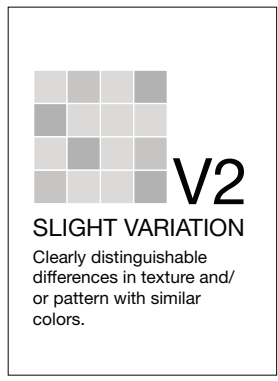
**DCOF** - Meets and exceeds .55 DCOF rating as required for ANSI A326.3 4.1.4. Exterior Wet and 4.1.5 Oils / Grease.

### ANSI A326.3 Declared Use:

4.1.4 Exterior, Wet Plus (IW+) - and - 4.1.5 Oils/Grease (O/G)

## technical specifications

	SPECS	TEST METHOD	INDUSTRY STANDARD	AUTOSTONEUSA
	WATER ABSORPTION	ASTM C373	≤0.5%	≤0.4%
	CHEMICAL RESISTANCE	ASTM C650	A tile sample is placed in continuous contact with a variety of chemicals for 24 hours. No sample must show visible defects.	NOT AFFECTED
	D.C.O.F. AcuTest®	ANSI A326.3 4.1.4 EW (Exterior, Wet) 4.1.5 O/G (Oils/Grease)	≥0.55 DCOF WET	≥0.55 DCOF WET
	STAIN RESISTANCE	ASTM C1378	Surfaces are exposed to staining agents for 24 hours followed by four cleaning procedures. Results are recorded post cleaning.	NOT AFFECTED
	BREAKING STRENGTH	ASTM C648	≥250 lb/ft2	8mm ≥300 lb/ft2 10mm ≥400 lb/ft2
	RESISTANCE TO FREEZE	ASTM C1026	A tile sample is subjected to repeated processes of freezing and thawing. Sample must show no visible defects.	RESISTANT
	WARPAGE EDGE	ASTM C485	Warpage ± 0.4% or ± 0.05 in	≥± 0.4%
	WARPAGE DIAGONAL	ASTM C485	Warpage ± 0.4% or ± 0.07 in	≥± 0.4%
	WARPAGE EDGE	ASTM C485	Warpage ± 0.5% or ± 0.07 in	≥± 0.5%
Note:  in USA	WARPAGE DIAGONAL	ASTM C485	Warpage ± 0.5% or ± 0.07 in	≥± 0.5%
	WEDGING	ASTM C502	± 0.25% or ± 0.03 in	≥± 0.25%
	THICKNESS	ASTM C499	Range: ± 0.04 in	≤0.04 in



# ClinkerShopUSA

Better technology, better performance, American made.

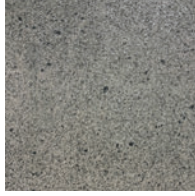


MADE in USA



Alloy Grey

Size: 04" x 08" x 14 mm  
Finish: Super.Grip.BrightFinish  
ANSI A362.3 Use Environment:  
4.1.3 IW+ (Interior Wet, Pus)  
4.1.4 EW (Exterior Wet)  
4.1.5 O/G (Oils & Grease)



Smoke Grey

Size: 04" x 08" x 14 mm  
Finish: Super.Grip.BrightFinish  
ANSI A362.3 Use Environment:  
4.1.3 IW+ (Interior Wet, Pus)  
4.1.4 EW (Exterior Wet)  
4.1.5 O/G (Oils & Grease)



Genesis-Carbon Black

Size: 04" x 08" x 14 mm  
Finish: Super.Grip.BrightFinish  
ANSI A362.3 Use Environment:  
4.1.3 IW+ (Interior Wet, Pus)  
4.1.4 EW (Exterior Wet)  
4.1.5 O/G (Oils & Grease)

## Product Use Category 4.1.4 Exterior Wet (EW) & 4.1.5 (O/G)

Evaluate for use in automotive workshop and service drive environments.

**4.1.4 (Exterior, Wet)** - level outdoor spaces walkways, sidewalks, where such floors may be walked upon when wet (excluding ice or snow) if level, clean, maintained and free of standing water or other contaminants.

**4.1.5 (Oils/Greases)** - level areas regularly exposed to automotive fluids, etc., so long as such floors are level, regularly cleaned, maintained and free of standing water and contaminant build-up. Consult with your architect to determine dealership practices. Review ANSI A326.3 2021 standard.

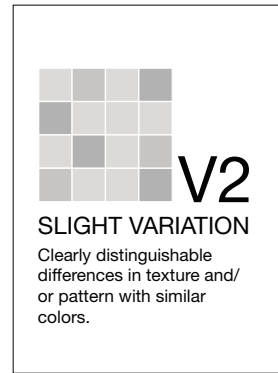
**DCOF** - Meets and exceeds .55 DCOF rating as required for ANSI A326.3 4.1.4. Exterior Wet and 4.1.5 Oils / Grease.

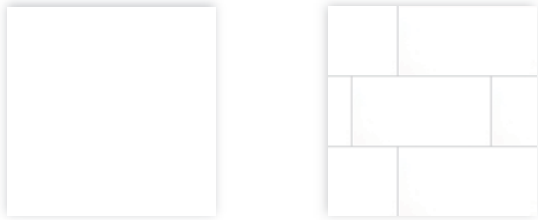
### ANSI A326.3 Declared Use:

4.1.4 Exterior, Wet Plus (IW+) - and - 4.1.5 Oils/Grease (O/G)

## technical specifications

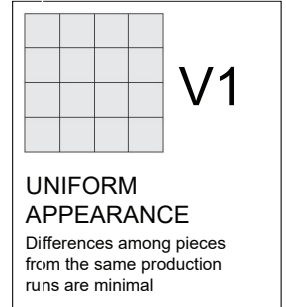
	SPECS	TEST METHOD	INDUSTRY STANDARD	AUTOSTONEUSA
	WATER ABSORPTION	ASTM C373	≤0.5%	≤0.4%
	CHEMICAL RESISTANCE	ASTM C650	A tile sample is placed in continuous contact with a variety of chemicals for 24 hours. No sample must show visible defects.	NOT AFFECTED
	D.C.O.F. AcuTest®	ANSI A326.3 4.1.4 EW (Exterior, Wet) 4.1.5 O/G (Oils/Grease)	≥0.55 DCOF WET	≥0.55 DCOF WET
	STAIN RESISTANCE	ASTM C1378	Surfaces are exposed to staining agents for 24 hours followed by four cleaning procedures. Results are recorded post cleaning.	NOT AFFECTED
	BREAKING STRENGTH	ASTM C648	≥250 lb/ft2	8mm ≥300 lb/ft2 10mm ≥400 lb/ft2
	RESISTANCE TO FREEZE	ASTM C1026	A tile sample is subjected to repeated processes of freezing and thawing. Sample must show no visible defects.	RESISTANT
	WARPAGE EDGE	ASTM C485	Warpage ± 0.4% or ± 0.05 in	≥± 0.4%
	WARPAGE DIAGONAL	ASTM C485	Warpage ± 0.4% or ± 0.07 in	≥± 0.4%
	WARPAGE EDGE	ASTM C485	Warpage ± 0.5% or ± 0.07 in	≥± 0.5%
	WARPAGE DIAGONAL	ASTM C485	Warpage ± 0.5% or ± 0.07 in	≥± 0.5%
Note:  in USA	WEDGING	ASTM C502	± 0.25% or ± 0.03 in	≥± 0.25%
	THICKNESS	ASTM C499	Range: ± 0.04 in	≤0.04 in





## Wall Tiles

**Series:** Premier  
**Color:** Bright White Ice  
**Finish:** Glossy  
**Size:** 3" x 6" or 6" x 6" and 12" x 24"  
**Product Code (3" x 6"):**  
 WT-1 (Alternate)  
**Product Code (6" x 6"):**  
 WT-3 (Alternate)  
**Product Code (12" x 24"):**  
 WT-3 (Alternate)



## technical specifications

**Declared Use:** Wall Tile Only - Glazed Surface Wall Tile

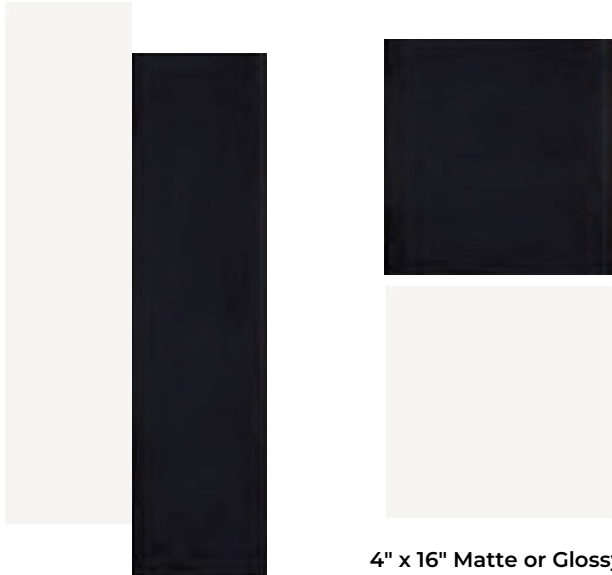
### TECHNICAL SPECIFICATIONS

This product meets or exceeds all standards described in ANSI A137.1.

	SPECS	TEST METHOD	INDUSTRY STANDARD	AutoStoneUSA Results	
	WATER ABSORPTION	ASTM C373	≤0.5%	≤0.4%	
	CERTIFIED PORCELAIN TILE 0.5% or less water absorption	ASTM C373	0.5%	Meeting the water absorption criteria of the American national standard PTCA	
	SURFACE WEAR RESISTANCE	ANSI A137.1	Surface Wear-resistance properties of glazed vitreous and porcelain tiles.	ALL RESIDENTIAL / COMMERCIAL	
	CHEMICAL RESISTANCE	ASTM C650	A tile sample is placed in continuous contact with a variety of chemicals for 24 hours. No sample must show visible defects.	NOT AFFECTED	
	STAIN RESISTANCE	ASTM C1378	Surfaces are exposed to staining agents for 24 hours followed by four cleaning procedures. Results are recorded post cleaning.	NOT AFFECTED	
	BREAKING STRENGTH	ASTM C648	≥250 lbf	8mm ≥300 lbf 10mm ≥400 lbf	
	RESISTANCE TO FREEZE	ASTM C1026	A tile sample is subjected to repeated processes of freezing and thawing. Sample must show no visible defects.	RESISTANT	
	WARPAGE EDGE	ASTM C485	±0.40% or ±0.05 in (±1.8 mm)	± 0.40%	Rectified
	WARPAGE DIAGONAL	ASTM C485	±0.40% or ±0.07 in (±1.8 mm)	± 0.40%	Rectified
	WEDGING	ASTM C502	±0.25% or ±0.03 in (±0.8 mm)	± 0.25%	Rectified
	WARPAGE EDGE	ASTM C485	±0.50% or ±0.07 in (±1.8 mm)	± 0.50%	Calibrated
	WARPAGE DIAGONAL	ASTM C485	±0.50% or ±0.07 in (±1.8 mm)	± 0.50%	Calibrated
	WEDGING	ASTM C502	±0.50% or ±0.08 in (±2.0 mm)	± 0.50%	Calibrated
	THICKNESS	ASTM C499	Range: ± 0.04 in	≤0.04 in	



MADE IN USA



4" x 16" Matte or Glossy

### Modern Walls - Glazed Wall Tile

Series: KRE-A-tive  
 Color: Artic White or Black  
 Size: 04" x 16"  
 Edge Profile: Soft Radius (wall installation)  
 Finish: Glossy or Matte  
 ANSI A326.3: N/A  
 Declared Use: Walls  
 DCOF rating: N/A

Grout Manufacturer: Laticrete (or equal)  
 Permacolor Select (or equal)  
 Color: 44 Bright White (or matching color)



4" x 16" Matte or Glossy

### Modern Walls - Glazed Wall Tile

Series: REL-A-tiva-T  
 Color: Artic White or Black  
 Size: 04" x 16"  
 Edge Profile: Soft Radius (wall installation)  
 Finish: Glossy or Matte  
 ANSI A326.3: N/A  
 Declared Use: Walls  
 DCOF rating: N/A

Grout Manufacturer: Laticrete (or equal)  
 Permacolor Select (or equal)  
 Color: 44 Bright White (or matching color)



4" x 16" Matte or Glossy

### Modern Walls - Glazed Wall Tile

Series: Waves  
 Color: Artic White or Black  
 Size: 04" x 16"  
 Edge Profile: Soft Radius (wall installation)  
 Finish: Glossy or Matte  
 ANSI A326.3: N/A  
 Declared Use: Walls  
 DCOF rating: N/A

Grout Manufacturer: Laticrete (or equal)  
 Permacolor Select (or equal)  
 Color: 44 Bright White (or matching color)



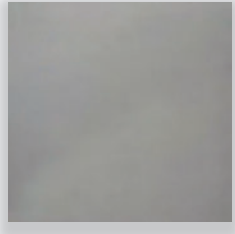
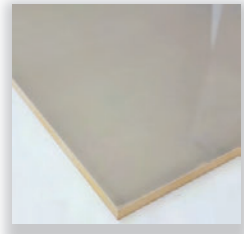
## Restroom & Tech Walls

**Color:** Simply White

**Finish:** Satin

**Nominal Size:** 12" x 24" (nominal)

**Actual Size:** 11 13/16" x 23 10/16"















**Color:** Stormy Grey

**Finish:** Glossy

**Nominal Size:** 12" x 24" (nominal)

**Actual Size:** 11 13/16" x 23 10/16"

### TECHNICAL SPECIFICATIONS

	SPECS	TEST METHOD	INDUSTRY STANDARD	AUTOSTONE VALUES
	WATER ABSORPTION	ASTM C373	≤0.5%	≤0.4%
	CHEMICAL RESISTANCE	ASTM C650	A tile sample is placed in continuous contact with a variety of chemicals for 24 hours. No sample must show visible defects.	NOT AFFECTED
	D.C.O.F. AcuTest®	ANSI A326.3	≥0.42% WET	≥0.42% WET
	STAIN RESISTANCE	ASTM C1378	Surfaces are exposed to staining agents for 24 hours followed by four cleaning procedures. Results are recorded post cleaning.	NOT AFFECTED
	BREAKING STRENGTH	ASTM C648	≥250 lb/ft <sup>2</sup>	8mm ≥300 lb/ft <sup>2</sup> 10mm ≥400 lb/ft <sup>2</sup>
	RESISTANCE TO FREEZE	ASTM C1026	A tile sample is subjected to repeated processes of freezing and thawing. Sample must show no visible defects.	RESISTANT
	WARPAGE EDGE	ASTM C485	Warpage ± 0.4% or ± 0.05 in	≥± 0.4%
	WARPAGE DIAGONAL	ASTM C485	Warpage ± 0.4% or ± 0.07 in	≥± 0.4%
	WARPAGE EDGE	ASTM C485	Warpage ± 0.5% or ± 0.07 in	≥± 0.5%
	WARPAGE DIAGONAL	ASTM C485	Warpage ± 0.5% or ± 0.07 in	≥± 0.5%
	WEDGING	ASTM C502	± 0.25% or ± 0.03 in	≥± 0.25%
	THICKNESS	ASTM C499	Range: ± 0.04 in	≤0.04 in

• Due to the inherent nature of fired porcelain tile, it is important to note that the coefficient of friction may vary within and between product runs.














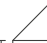
## Service & Tech Restroom Areas Wall Tile

**Series:** 1yШTŴöЖЖ  
**Color:** Granita Grey  
**Finish:** Satin  
**Size:** 8" x 8" A.S. Nominal Dimensions



## Service & Tech Restroom Areas Wall Tile

**Series:** 1yШTŴöЖЖ  
**Color:** Anthracite Grey  
**Finish:** Satin  
**Size:** 8" x 8" A.S. Nominal Dimensions

	SPECS	TEST METHOD	INDUSTRY STANDARD	AUTOSTONE VALUES
	WATER ABSORPTION	ASTM C373	≤0.5%	≤0.4%
	CHEMICAL RESISTANCE	ASTM C650	A tile sample is placed in continuous contact with a variety of chemicals for 24 hours. No sample must show visible defects.	NOT AFFECTED
	D.C.O.F. AcuTest®	ANSI A326.3	≥0.42% WET	≥0.42% WET
	STAIN RESISTANCE	ASTM C1378	Surfaces are exposed to staining agents for 24 hours followed by four cleaning procedures. Results are recorded post cleaning.	NOT AFFECTED
	BREAKING STRENGTH	ASTM C648	≥250 lb/ft <sup>2</sup>	8mm ≥300 lb/ft <sup>2</sup> 10mm ≥400 lb/ft <sup>2</sup>
	RESISTANCE TO FREEZE	ASTM C1026	A tile sample is subjected to repeated processes of freezing and thawing. Sample must show no visible defects.	RESISTANT
	WARPAGE EDGE	ASTM C485	Warpage ± 0.4% or ± 0.05 in	≥± 0.4%
	WARPAGE DIAGONAL	ASTM C485	Warpage ± 0.4% or ± 0.07 in	≥± 0.4%
	WARPAGE EDGE	ASTM C485	Warpage ± 0.5% or ± 0.07 in	≥± 0.5%
	WARPAGE DIAGONAL	ASTM C485	Warpage ± 0.5% or ± 0.07 in	≥± 0.5%
	WEDGING	ASTM C502	± 0.25% or ± 0.03 in	≥± 0.25%
	THICKNESS	ASTM C499	Range: ± 0.04 in	≤0.04 in

• Due to the inherent nature of fired porcelain tile, it is important to note that the coefficient of friction may vary within and between product runs.

# INDUSTRIAL ENVIRONMENT LVT LARGE (18" x 36") FORMAT FLOOR & WALL PANELS

**RA3**

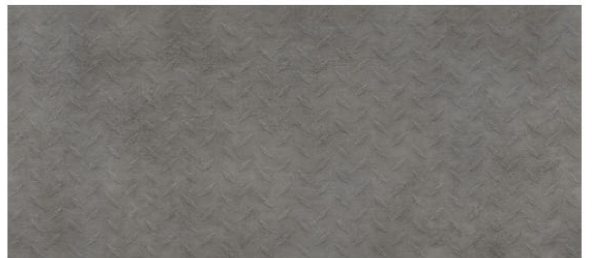
Great for Parts, Storage Areas, Janitorial, Lunch & Break Rooms, Tech Locker Room Floors & Walls.

Wainscoting for Hallways, WorkShop Areas & All Back-Office Areas.

18" x 36" large format panels with rugged diamond plated surface texture to help reduce STF (slip, trip, and fall) risk.



Grey Concrete



Deep Concrete



**SURFACE CAMOUFLAGE**

Surface Camouflage enhances the beauty of your floor by reducing the negative visual daily contaminants generated during your workday.



**SCRATCH RESISTANT SURFACE**

Will not dent, scratch, or chip like metal, concrete, epoxy, tile, or other finishes.



**CHEMICAL RESISTANT SURFACE**

Resistant to water, gasoline, MEK, acetone, motor oil, isopropanol, acetic acid, ammonia, sodium chloride solution, and other chemicals.\*



**IMPACT GUARD SURFACE**

Strong, rugged, and stands up to blunt force impact better than any other surface.



**RA IS RECOMMENDED FOR CLIMATE CONTROLLED ENVIRONMENTS WITH A ROOF, WALL AND DOORS FLOOD SAFE, WATER RESISTANT, + SOUND REDUCTION**



**CLIMATE-CONTROLLED ENVIRONMENTS**

For environments with a temperature room range of 40- and 104- degrees.\*



**FLOOD SAFE & WATER RESISTANT**

Panels are moisture-resistant and can be submerged for days and remain bonded.



**LESS NOISE BETTER CONDITIONS**

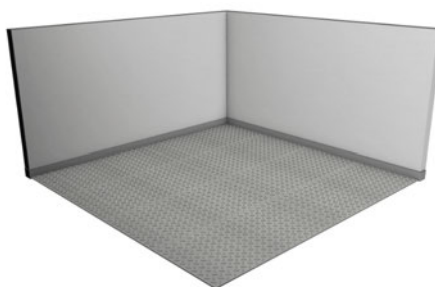
Reduces noise decibels (dB) and improves working conditions.

So easy to install that there is no need for expensive, highly skilled labor.

So fast that you can use immediately upon installation; no cure time required.


Panels are installed edge-to-edge, and wall-to-wall for a seamless, beautiful floor.

Commercial workshops install in 1-2 days (depending on size).



**RA3**

## RA3 PANEL PRICE




Troweled Adhesive Method\*



\*Troweled adhesive will be added to your quote

---

**Thickness:** 3mm

**Size:** 18" x 36" Panel (4.5 SQFT Per Panel)



**SURFACE CAMOUFLAGE**    **SCRATCH RESISTANT SURFACE**    **CHEMICAL RESISTANT SURFACE**    **IMPACT GUARD SURFACE**

**Features Included:**

- Rated for climate-controlled environments (home garage)
- Surface Camouflage
- Scratch Resistant Surface
- Chemical Resistant Surface
- Impact Guard Surface
- Industrial Strength 30 mil Wear-Layer